



Peralta Facts

Student Outcomes

College of Alameda

March 2010

Peralta Community College District
Office of Institutional Research

Peralta Facts Student Outcomes

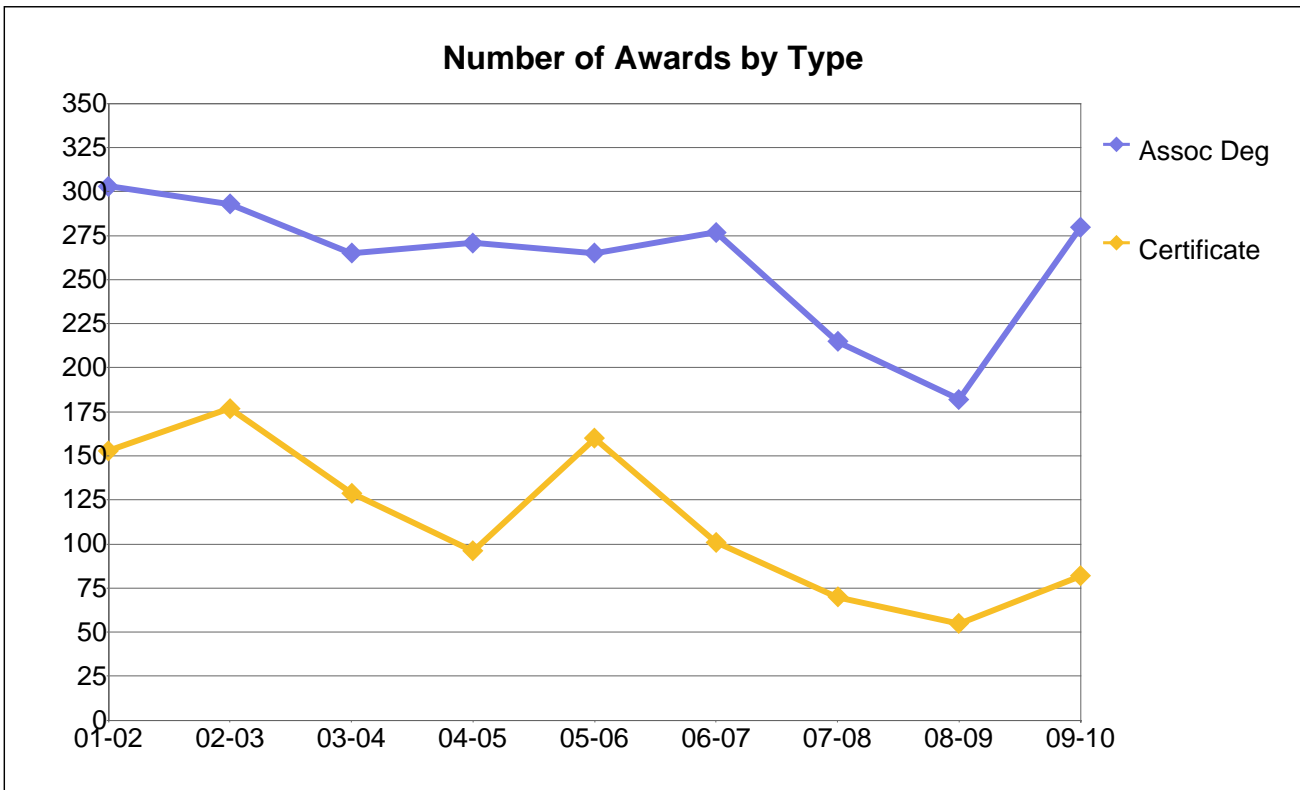
Peralta Community College District

Table of Contents

Number of Awards by Type (Degrees and Certificates).....	1
Number of Associate Degrees by Gender.....	2
Number of Associate Degrees by Ethnicity.....	3
Number of Associate Degrees by Age Group.....	4
Number of Certificates by Gender.....	5
Number of Certificates by Ethnicity.....	6
Number of Certificates by Age Group.....	7
Number of Transfers to CSU and UC by Year.....	8
Number of Transfers to UC by Ethnicity.....	9
Number of Transfer to CSU by Ethnicity.....	10
Fall Grade Frequency and Percentage Distribution by Year.....	11
Fall Course Success Rate by All Students.....	12
Fall Course Success Rate by Gender.....	13
Fall Course Success Rates by Ethnicity.....	14
Fall Course Success Rates by Age Group.....	15
Fall Course Retention Rates by Ethnicity.....	16
Fall to Spring Persistence Counts and Rates by All Students.....	17
Fall to Spring Persistence Counts and Rates by Gender.....	18
Fall to Spring Persistence Counts and Rates by Ethnicity.....	19
Fall to Spring Persistence Counts and Rates by Age Group.....	20
Tracking of Fall First-time Cohorts by Goal and Completion.....	21

Tracking of Fall 2003 First-time Cohorts by Goal and Completion by Gender	22
Tracking of Fall 2003 First-time Cohorts by Goal and Completion by Ethnicity.....	23
Tracking of Fall 2003 First-time Cohorts by Goal and Completion by Age Group	24

College of Alameda



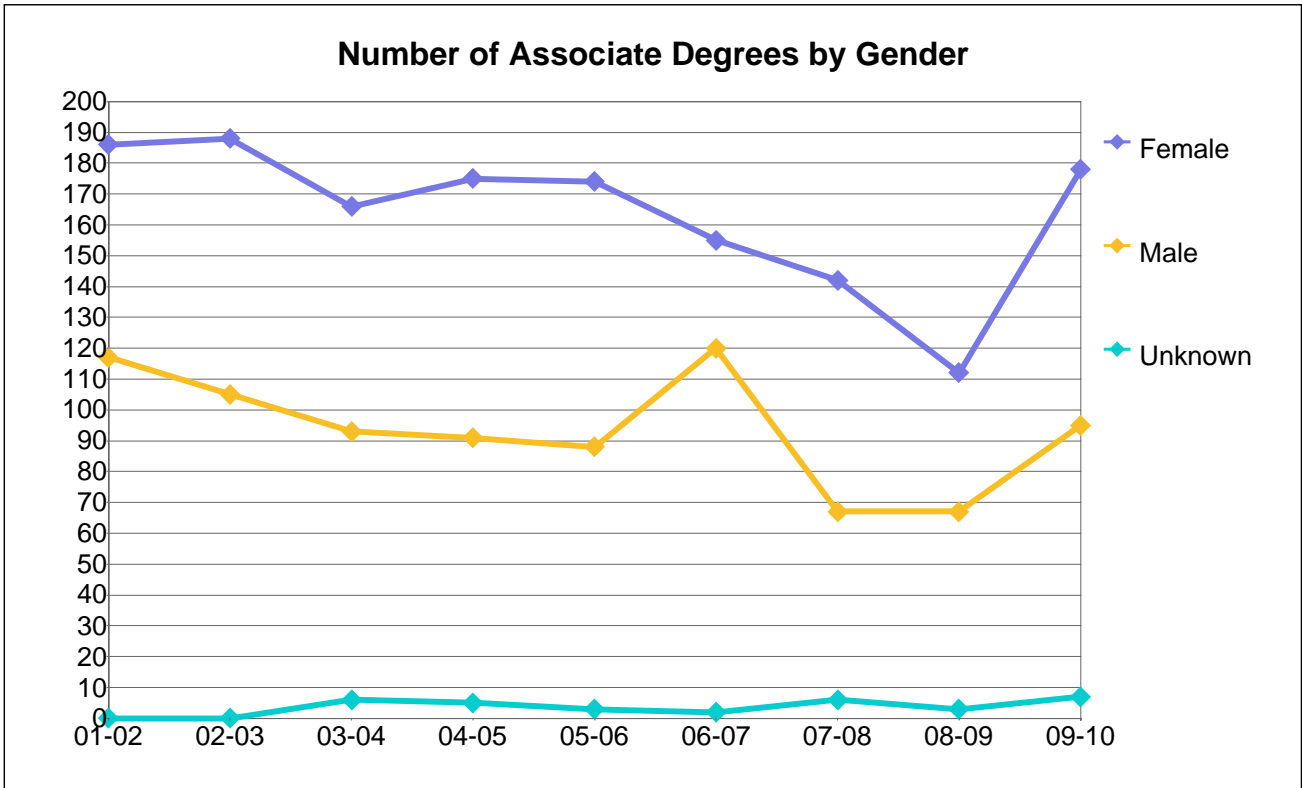
Number of Awards by Type

Deg or Cert	01-02	02-03	03-04	04-05	05-06	06-07	07-08	08-09	09-10
Assoc Deg	303	293	265	271	265	277	215	182	280
Certificate	153	177	129	96	160	101	70	55	82
Total	456	470	394	367	425	378	285	237	362

Percentage Distribution of Awards by Type

Deg or Cert	01-02	02-03	03-04	04-05	05-06	06-07	07-08	08-09	09-10
Assoc Deg	66%	62%	67%	74%	62%	73%	75%	77%	77%
Certificate	34%	38%	33%	26%	38%	27%	25%	23%	23%
Total	100%	100%	100%	100%	100%	100%	100%	100%	100%

College of Alameda



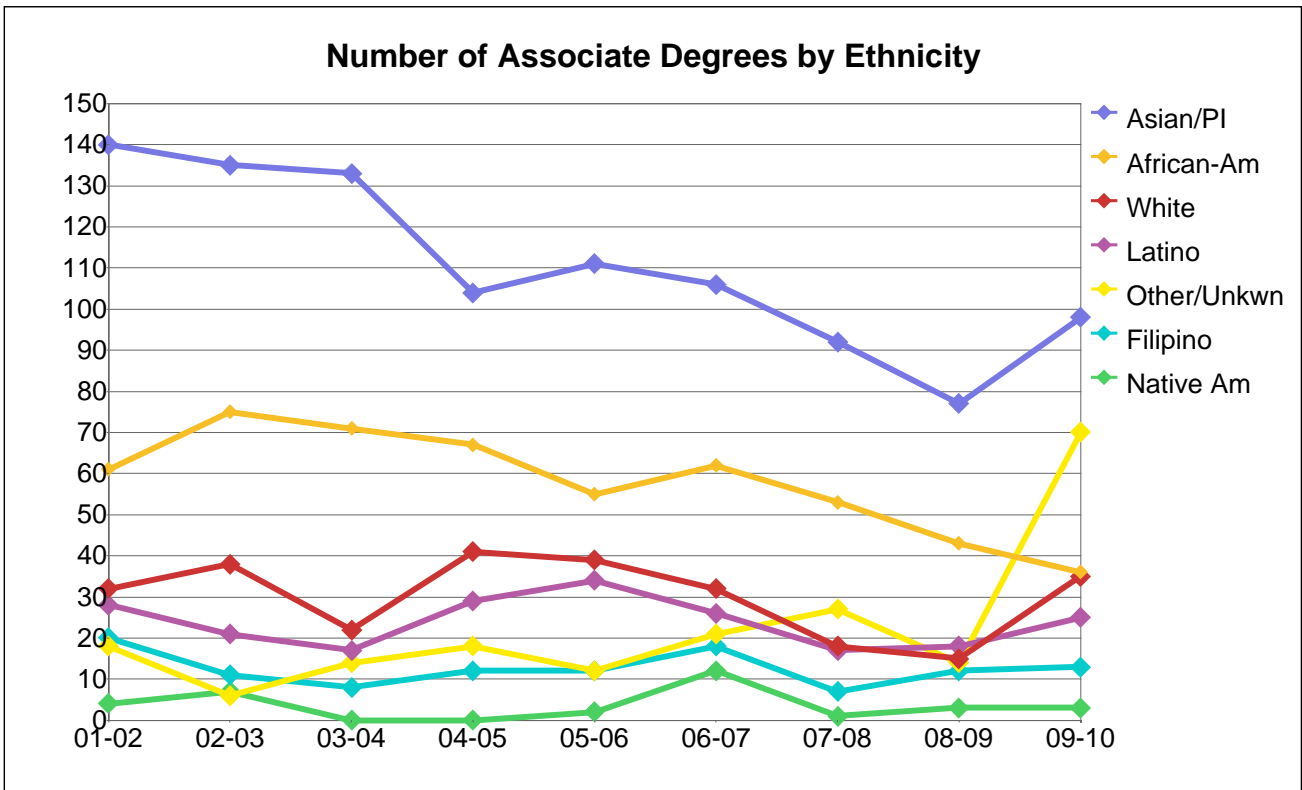
Number of Associate Degrees by Gender

Gender	01-02	02-03	03-04	04-05	05-06	06-07	07-08	08-09	09-10
Female	186	188	166	175	174	155	142	112	178
Male	117	105	93	91	88	120	67	67	95
Unknown	0		6	5	3	2	6	3	7
Total	303	293	265	271	265	277	215	182	280

Percentage Distribution of Associate Degrees by Gender

Gender	01-02	02-03	03-04	04-05	05-06	06-07	07-08	08-09	09-10
Female	61%	64%	63%	65%	66%	56%	66%	62%	64%
Male	39%	36%	35%	34%	33%	43%	31%	37%	34%
Unknown	0%		2%	2%	1%	1%	3%	2%	3%
Total	100%	100%	100%	100%	100%	100%	100%	100%	100%

College of Alameda



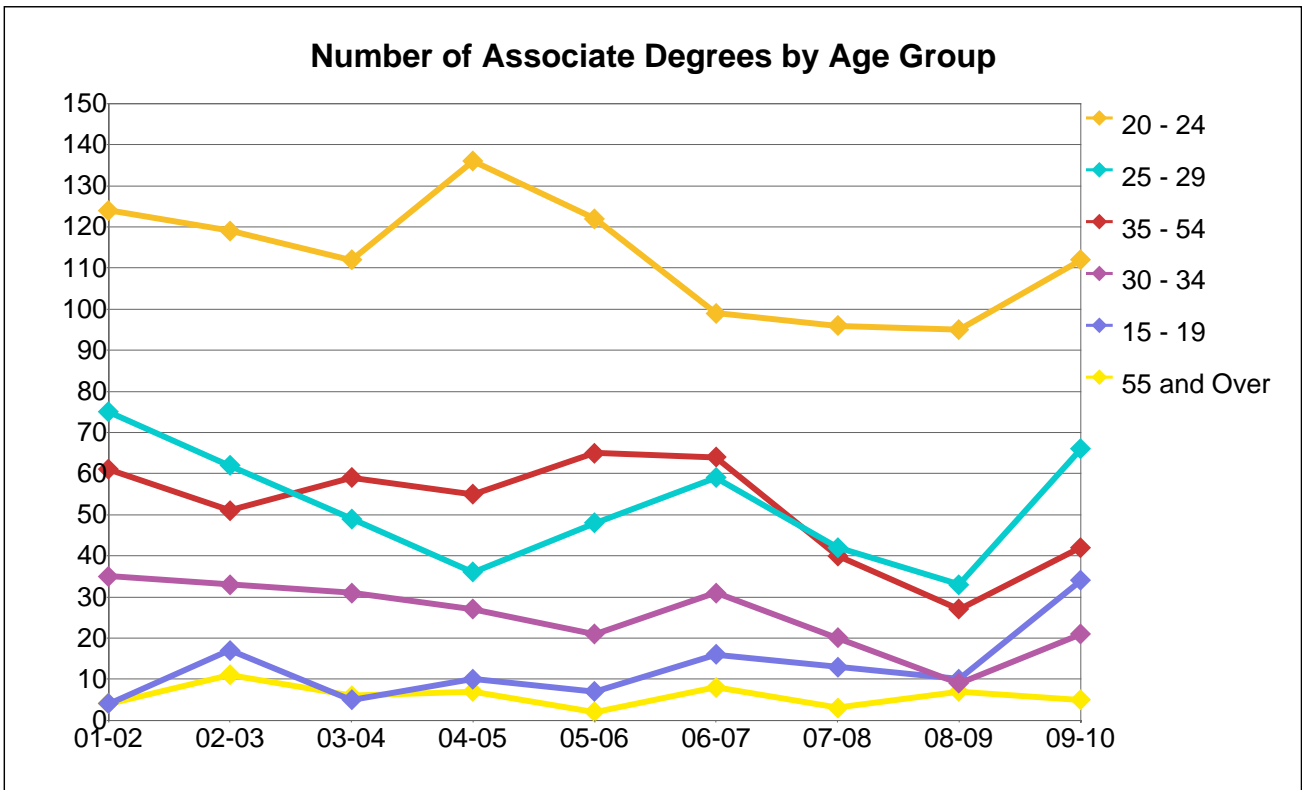
Number of Associate Degrees by Ethnicity

Ethnicity	01-02	02-03	03-04	04-05	05-06	06-07	07-08	08-09	09-10
African-Am	61	75	71	67	55	62	53	43	36
Asian/PI	140	135	133	104	111	106	92	77	98
Filipino	20	11	8	12	12	18	7	12	13
Latino	28	21	17	29	34	26	17	18	25
Native Am	4	7			2	12	1	3	3
Other/Unkwn	18	6	14	18	12	21	27	14	70
White	32	38	22	41	39	32	18	15	35
Total	303	293	265	271	265	277	215	182	280

Percentage Distribution of Associate Degrees by Ethnicity

Ethnicity	01-02	02-03	03-04	04-05	05-06	06-07	07-08	08-09	09-10
African-Am	20%	26%	27%	25%	21%	22%	25%	24%	13%
Asian/PI	46%	46%	50%	38%	42%	38%	43%	42%	35%
Filipino	7%	4%	3%	4%	5%	6%	3%	7%	5%
Latino	9%	7%	6%	11%	13%	9%	8%	10%	9%
Native Am	1%	2%			1%	4%	0%	2%	1%
Other/Unkwn	6%	2%	5%	7%	5%	8%	13%	8%	25%
White	11%	13%	8%	15%	15%	12%	8%	8%	13%
Total	100%	100%	100%	100%	100%	100%	100%	100%	100%

College of Alameda



Number of Associate Degrees by Age Group

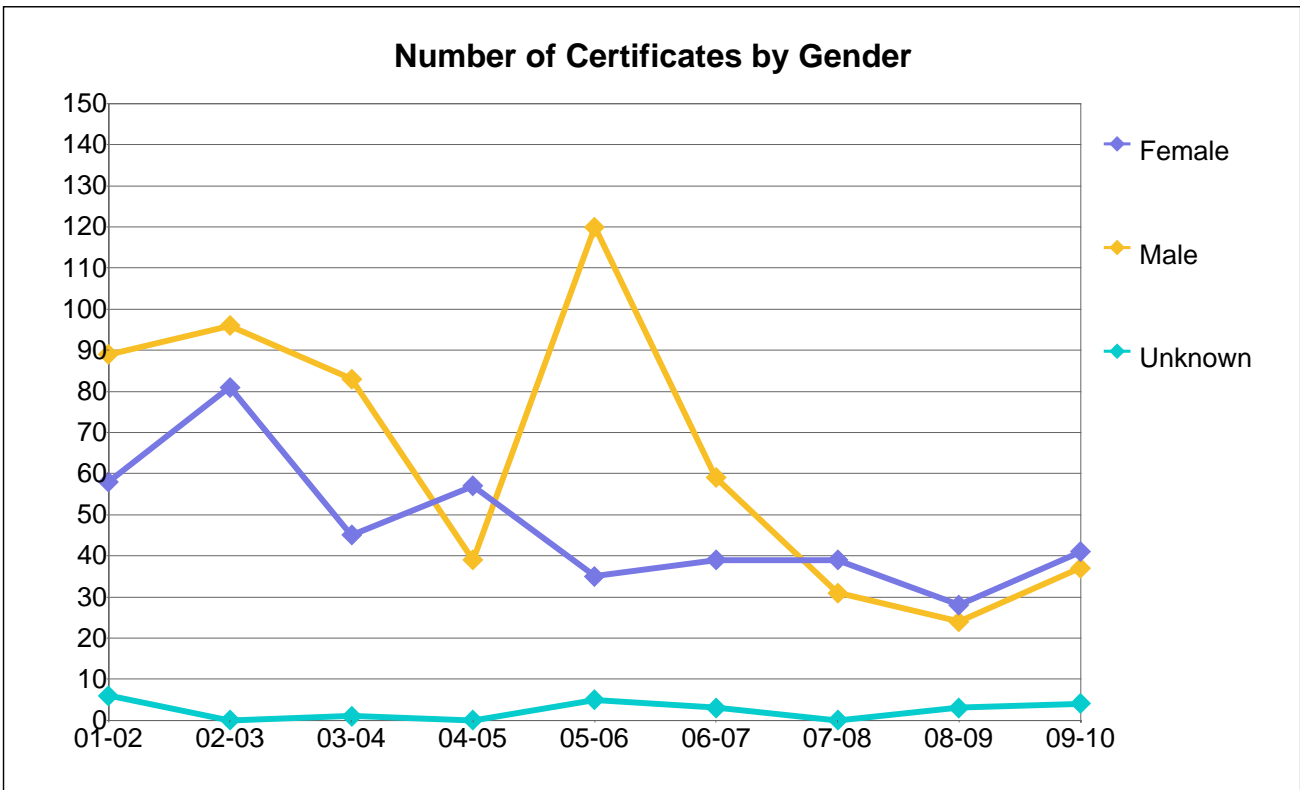
Age Group	01-02	02-03	03-04	04-05	05-06	06-07	07-08	08-09	09-10
15 - 19	4	17	5	10	7	16	13	10	34
20 - 24	124	119	112	136	122	99	96	95	112
25 - 29	75	62	49	36	48	59	42	33	66
30 - 34	35	33	31	27	21	31	20	9	21
35 - 54	61	51	59	55	65	64	40	27	42
55 and Ove	4	11	6	7	2	8	3	7	5
Unkwn			3			0	1	1	
Total	303	293	265	271	265	277	215	182	280

Percentage Distribution of Associate Degrees by Age Group

Age Group	01-02	02-03	03-04	04-05	05-06	06-07	07-08	08-09	09-10
15 - 19	1%	6%	2%	4%	3%	6%	6%	5%	12%
20 - 24	41%	41%	42%	50%	46%	36%	45%	52%	40%
25 - 29	25%	21%	18%	13%	18%	21%	20%	18%	24%
30 - 34	12%	11%	12%	10%	8%	11%	9%	5%	8%
35 - 54	20%	17%	22%	20%	25%	23%	19%	15%	15%
55 and Over	1%	4%	2%	3%	1%	3%	1%	4%	2%
Unkwn			1%			0%	0%	1%	
Total	100%	100%	100%	100%	100%	100%	100%	100%	100%

Note: Age as of 12/15 of the award year.

College of Alameda



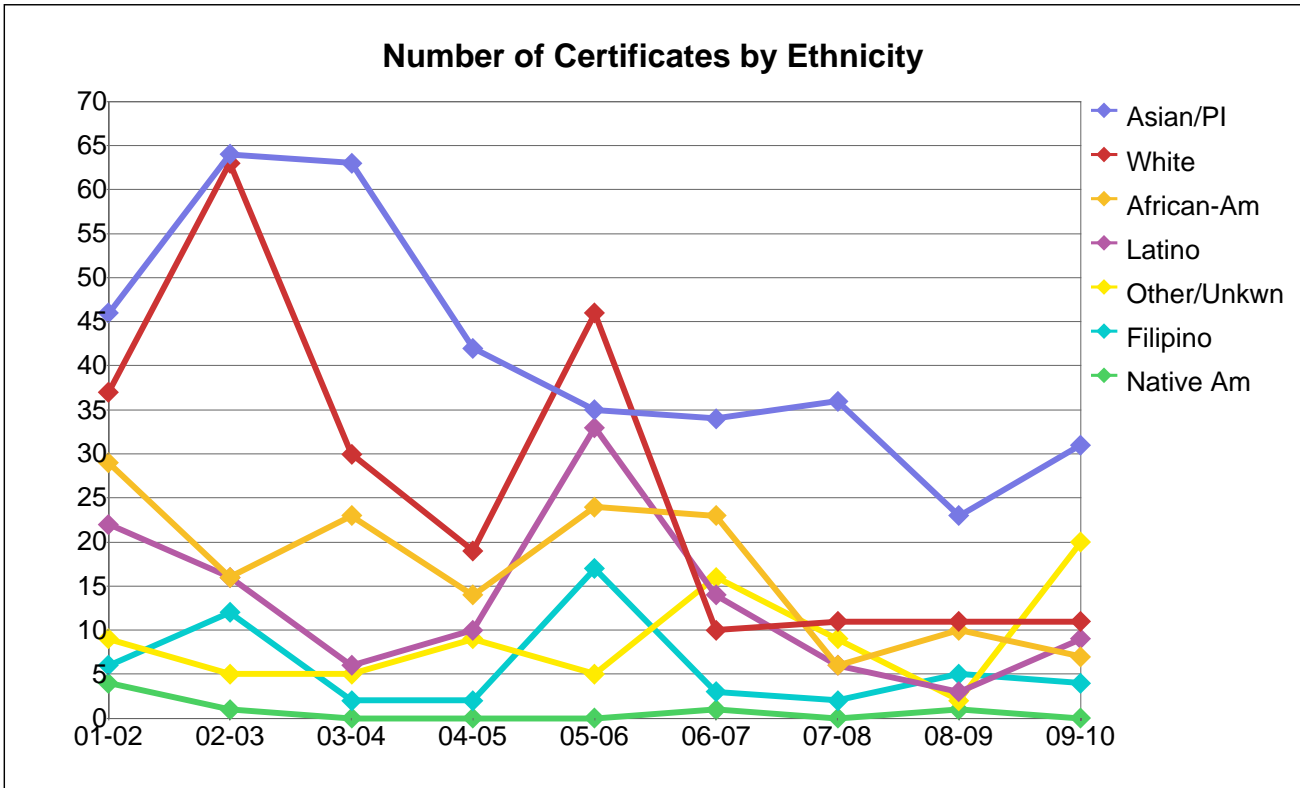
Number of Certificates by Gender

Gender	01-02	02-03	03-04	04-05	05-06	06-07	07-08	08-09	09-10
Female	58	81	45	57	35	39	39	28	41
Male	89	96	83	39	120	59	31	24	37
Unknown	6		1	0	5	3	0	3	4
Total	153	177	129	96	160	101	70	55	82

Percentage Distribution of Certificates by Gender

Gender	01-02	02-03	03-04	04-05	05-06	06-07	07-08	08-09	09-10
Female	38%	46%	35%	59%	22%	39%	56%	51%	50%
Male	58%	54%	64%	41%	75%	58%	44%	44%	45%
Unknown	4%		1%	0%	3%	3%	0%	5%	5%
Total	100%	100%	100%	100%	100%	100%	100%	100%	100%

College of Alameda



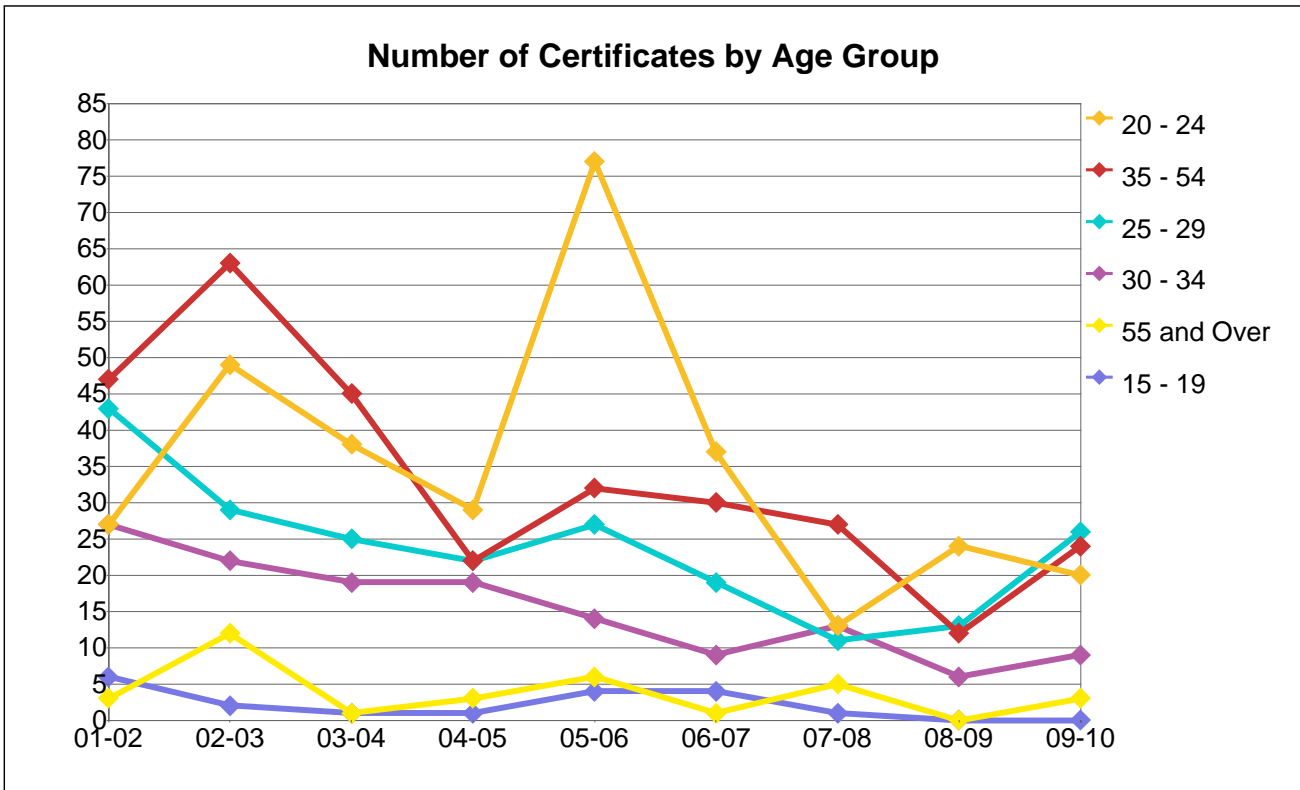
Number of Certificates by Ethnicity

Ethnicity	01-02	02-03	03-04	04-05	05-06	06-07	07-08	08-09	09-10
African-Am	29	16	23	14	24	23	6	10	7
Asian/PI	46	64	63	42	35	34	36	23	31
Filipino	6	12	2	2	17	3	2	5	4
Latino	22	16	6	10	33	14	6	3	9
Native Am	4	1			0	1	0	1	0
Other/Unkwn	9	5	5	9	5	16	9	2	20
White	37	63	30	19	46	10	11	11	11
Total	153	177	129	96	160	101	70	55	82

Percentage Distribution of Certificates by Ethnicity

Ethnicity	01-02	02-03	03-04	04-05	05-06	06-07	07-08	08-09	09-10
African-Am	19%	9%	18%	15%	15%	23%	9%	18%	9%
Asian/PI	30%	36%	49%	44%	22%	34%	51%	42%	38%
Filipino	4%	7%	2%	2%	11%	3%	3%	9%	5%
Latino	14%	9%	5%	10%	21%	14%	9%	5%	11%
Native Am	3%	1%			0%	1%	0%	2%	0%
Other/Unkwn	6%	3%	4%	9%	3%	16%	13%	4%	24%
White	24%	36%	23%	20%	29%	10%	16%	20%	13%
Total	100%	100%	100%	100%	100%	100%	100%	100%	100%

College of Alameda



Number of Certificates by Age Group

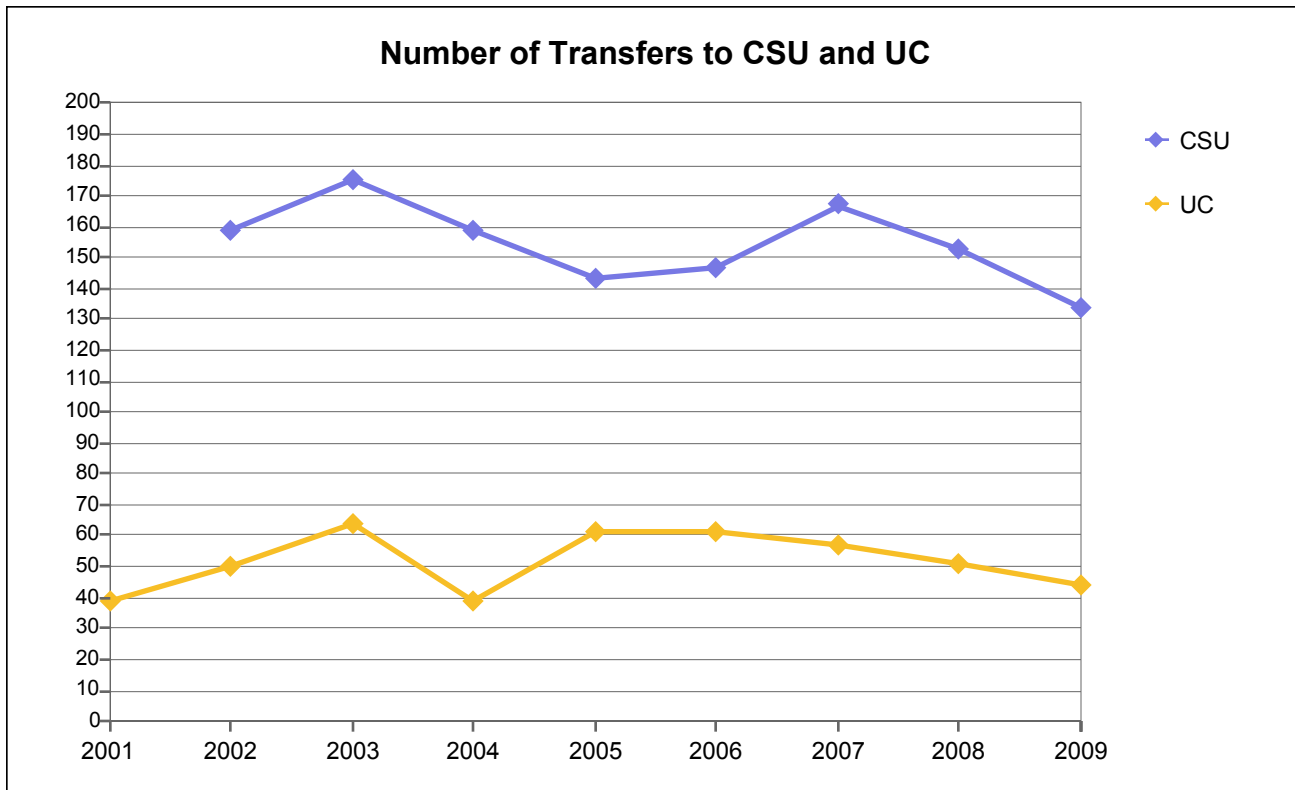
Age Group	01-02	02-03	03-04	04-05	05-06	06-07	07-08	08-09	09-10
15 - 19	6	2	1	1	4	4	1	0	0
20 - 24	27	49	38	29	77	37	13	24	20
25 - 29	43	29	25	22	27	19	11	13	26
30 - 34	27	22	19	19	14	9	13	6	9
35 - 54	47	63	45	22	32	30	27	12	24
55 and Ove	3	12	1	3	6	1	5	0	3
Unkwn			0			1	0	0	
Total	153	177	129	96	160	101	70	55	82

Percentage Distribution of Certificates by Age Group

Age Group	01-02	02-03	03-04	04-05	05-06	06-07	07-08	08-09	09-10
15 - 19	4%	1%	1%	1%	3%	4%	1%	0%	0%
20 - 24	18%	28%	29%	30%	48%	37%	19%	44%	24%
25 - 29	28%	16%	19%	23%	17%	19%	16%	24%	32%
30 - 34	18%	12%	15%	20%	9%	9%	19%	11%	11%
35 - 54	31%	36%	35%	23%	20%	30%	39%	22%	29%
55 and Ove	2%	7%	1%	3%	4%	1%	7%	0%	4%
Unkwn			0%			1%	0%	0%	
Total	100%	100%	100%	100%	100%	100%	100%	100%	100%

Note: Age as of 12/15 of the award year.

College of Alameda



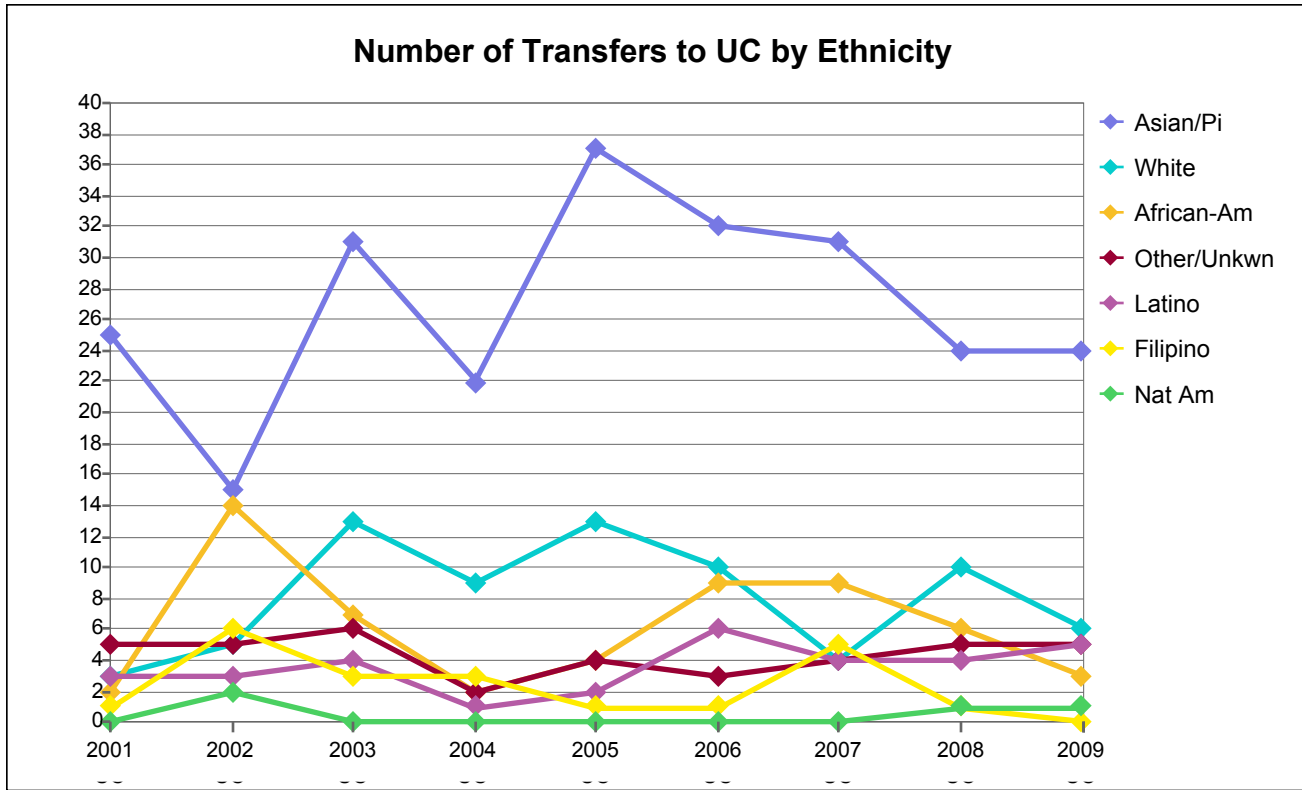
Number of Transfers to CSU and UC

System	2001	2002	2003	2004	2005	2006	2007	2008	2009
CSU		159	175	159	143	147	167	153	134
UC	39	50	64	39	61	61	57	51	44
Total	39	209	239	198	204	208	224	204	178

Percentage Distribution of Transfers to CSU and UC

System	2001	2002	2003	2004	2005	2006	2007	2008	2009
CSU		76%	73%	80%	70%	71%	75%	75%	75%
UC	100%	24%	27%	20%	30%	29%	25%	25%	25%
Total	100%	100%	100%	100%	100%	100%	100%	100%	100%

College of Alameda



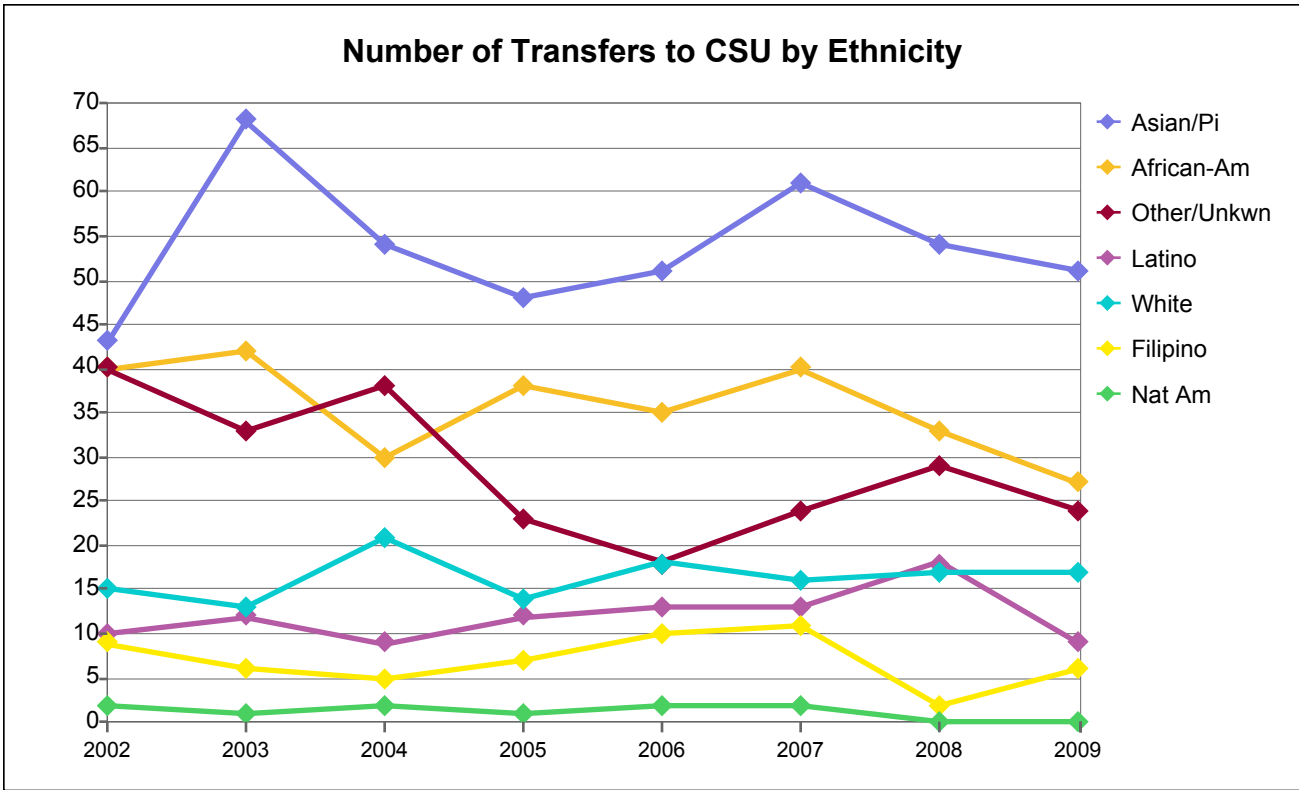
Number of UC Transfers by Ethnicity

Academic Yr Ending	Asian/Pi	African-Am	Filipino	Latino	Nat Am	White	Other/Unk	Totals
2001	25	2	1	3	0	3	5	39
2002	15	14	6	3	2	5	5	50
2003	31	7	3	4	0	13	6	64
2004	22	2	3	1	0	9	2	39
2005	37	4	1	2	0	13	4	61
2006	32	9	1	6	0	10	3	61
2007	31	9	5	4	0	4	4	57
2008	24	6	1	4	1	10	5	51
2009	24	3	0	5	1	6	5	44

Percentage Distribution of UC Transfers by Ethnicity

Academic Yr Ending	Asian/Pi	African-Am	Filipino	Latino	Nat Am	White	Other/Unk	Total
2001	64%	5%	3%	8%	0%	8%	13%	100%
2002	30%	28%	12%	6%	4%	10%	10%	100%
2003	48%	11%	5%	6%	0%	20%	9%	100%
2004	56%	5%	8%	3%	0%	23%	5%	100%
2005	61%	7%	2%	3%	0%	21%	7%	100%
2006	52%	15%	2%	10%	0%	16%	5%	100%
2007	54%	16%	9%	7%	0%	7%	7%	100%
2008	47%	12%	2%	8%	2%	20%	10%	100%
2009	55%	7%	0%	11%	2%	14%	11%	100%

College of Alameda



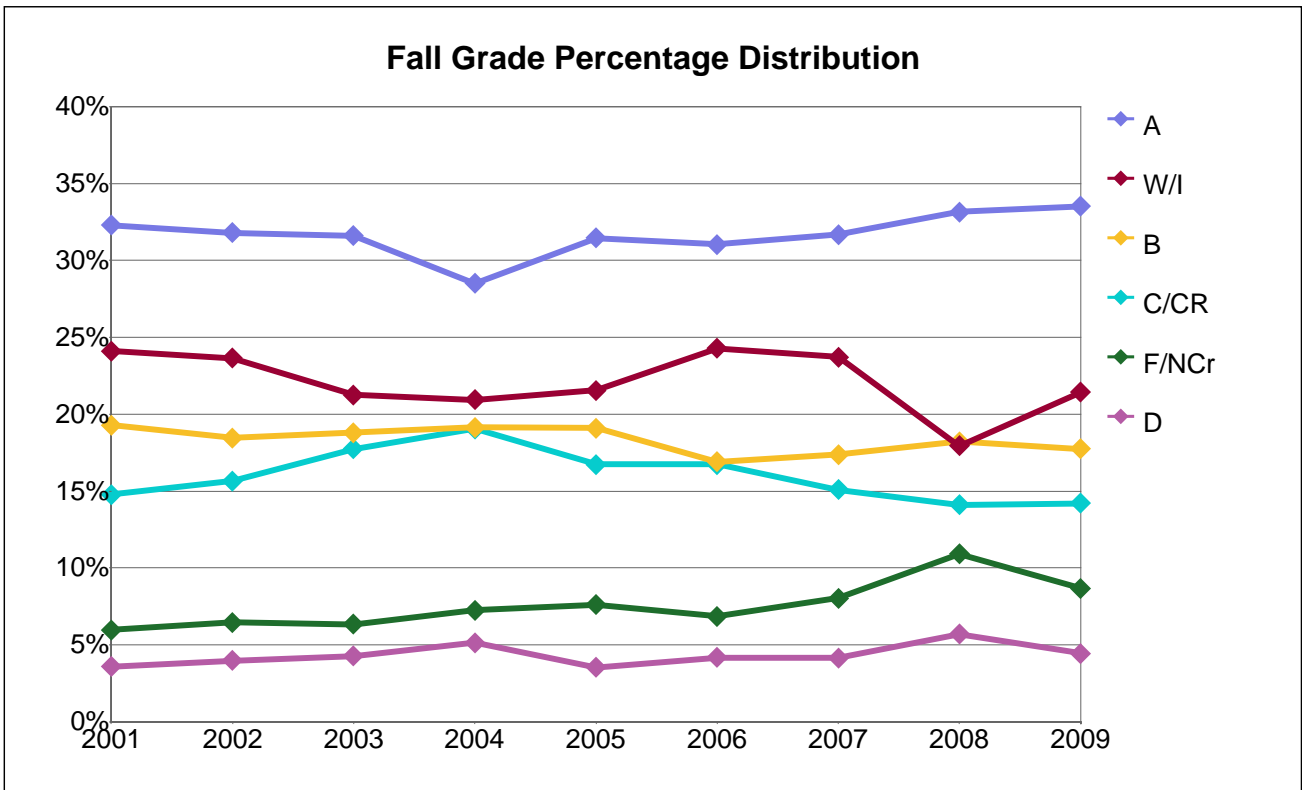
Number of CSU Transfers by Ethnicity

Academic Yr Ending	Asian/Pi	African-Am	Filipino	Latino	Nat Am	White	Other/Unk	Totals
2002	43	40	9	10	2	15	40	159
2003	68	42	6	12	1	13	33	175
2004	54	30	5	9	2	21	38	159
2005	48	38	7	12	1	14	23	143
2006	51	35	10	13	2	18	18	147
2007	61	40	11	13	2	16	24	167
2008	54	33	2	18	0	17	29	153
2009	51	27	6	9	0	17	24	134

Percentage Distribution of CSU Transfers by Ethnicity

Academic Yr Ending	Asian/Pi	African-Am	Filipino	Latino	Nat Am	White	Other/Unk	Total
2002	27%	25%	6%	6%	1%	9%	25%	100%
2003	39%	24%	3%	7%	1%	7%	19%	100%
2004	34%	19%	3%	6%	1%	13%	24%	100%
2005	34%	27%	5%	8%	1%	10%	16%	100%
2006	35%	24%	7%	9%	1%	12%	12%	100%
2007	37%	24%	7%	8%	1%	10%	14%	100%
2008	35%	22%	1%	12%	0%	11%	19%	100%
2009	38%	20%	4%	7%	0%	13%	18%	100%

College of Alameda



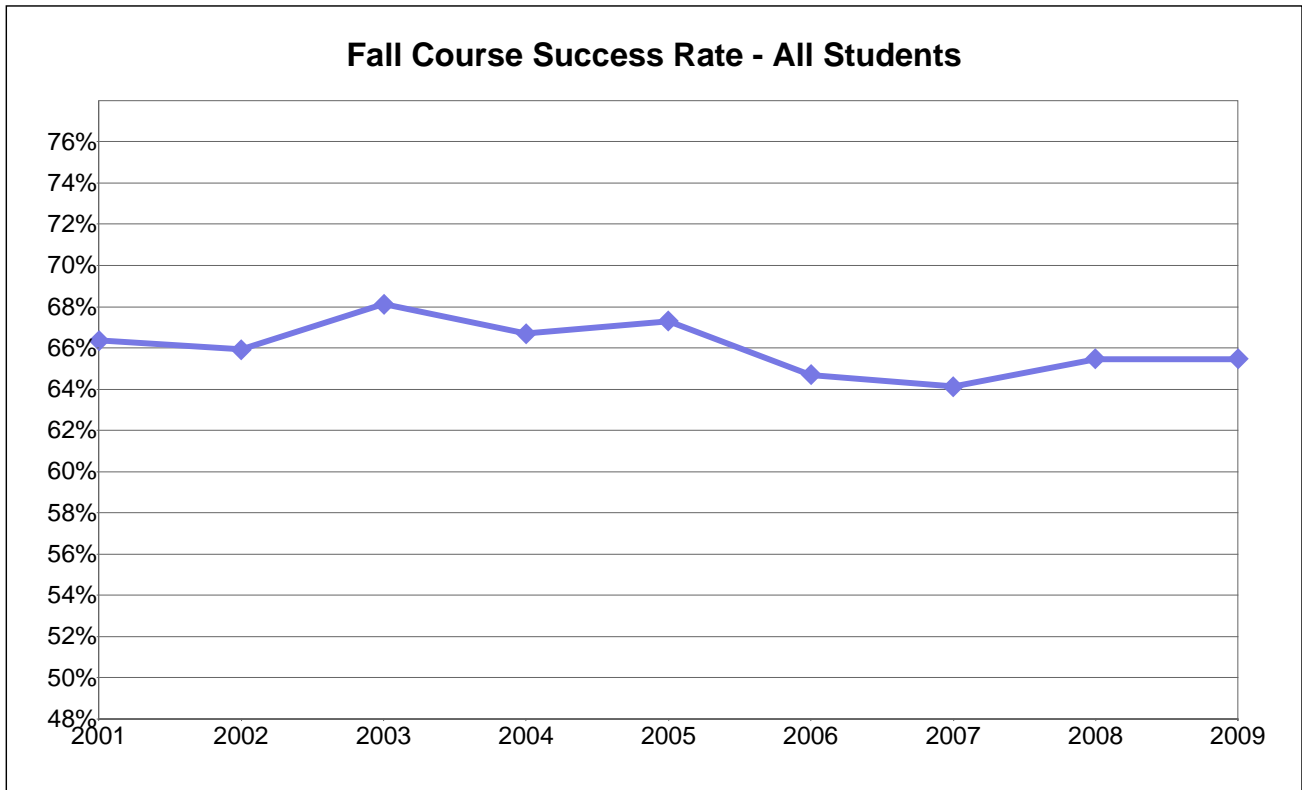
Fall Grade Frequency Distribution

Grade	2001	2002	2003	2004	2005	2006	2007	2008	2009
A	3,751	3,974	3,779	3,190	3,642	3,867	4,086	4,330	4,952
B	2,242	2,306	2,248	2,141	2,211	2,107	2,241	2,377	2,621
C	1,328	1,510	1,597	1,525	1,487	1,500	1,542	1,657	1,853
CR	388	446	525	606	449	586	404	184	247
D	415	496	512	573	410	520	534	745	655
F	311	424	424	522	518	581	638	1,337	1,212
I	128	131	113	118	102	124	202	5	240
NCr	382	383	333	290	363	273	398	87	70
W	2,672	2,823	2,431	2,224	2,392	2,901	2,857	2,336	2,926
Total	11,617	12,493	11,962	11,189	11,574	12,459	12,902	13,058	14,776

Fall Grade Percentage Distribution

Grade	2001	2002	2003	2004	2005	2006	2007	2008	2009
A	32%	32%	32%	29%	31%	31%	32%	33%	34%
B	19%	18%	19%	19%	19%	17%	17%	18%	18%
C	11%	12%	13%	14%	13%	12%	12%	13%	13%
CR	3%	4%	4%	5%	4%	5%	3%	1%	2%
D	4%	4%	4%	5%	4%	4%	4%	6%	4%
F	3%	3%	4%	5%	4%	5%	5%	10%	8%
I	1%	1%	1%	1%	1%	1%	2%	0%	2%
NCr	3%	3%	3%	3%	3%	2%	3%	1%	0%
W	23%	23%	20%	20%	21%	23%	22%	18%	20%
% of Column	100%	100%	100%	100%	100%	100%	100%	100%	100%

College of Alameda



Number of Fall Total Grades Awarded - All Students

Dimension	2001	2002	2003	2004	2005	2006	2007	2008	2009
All Students	11,617	12,493	11,962	11,189	11,574	12,459	12,902	13,058	14,776

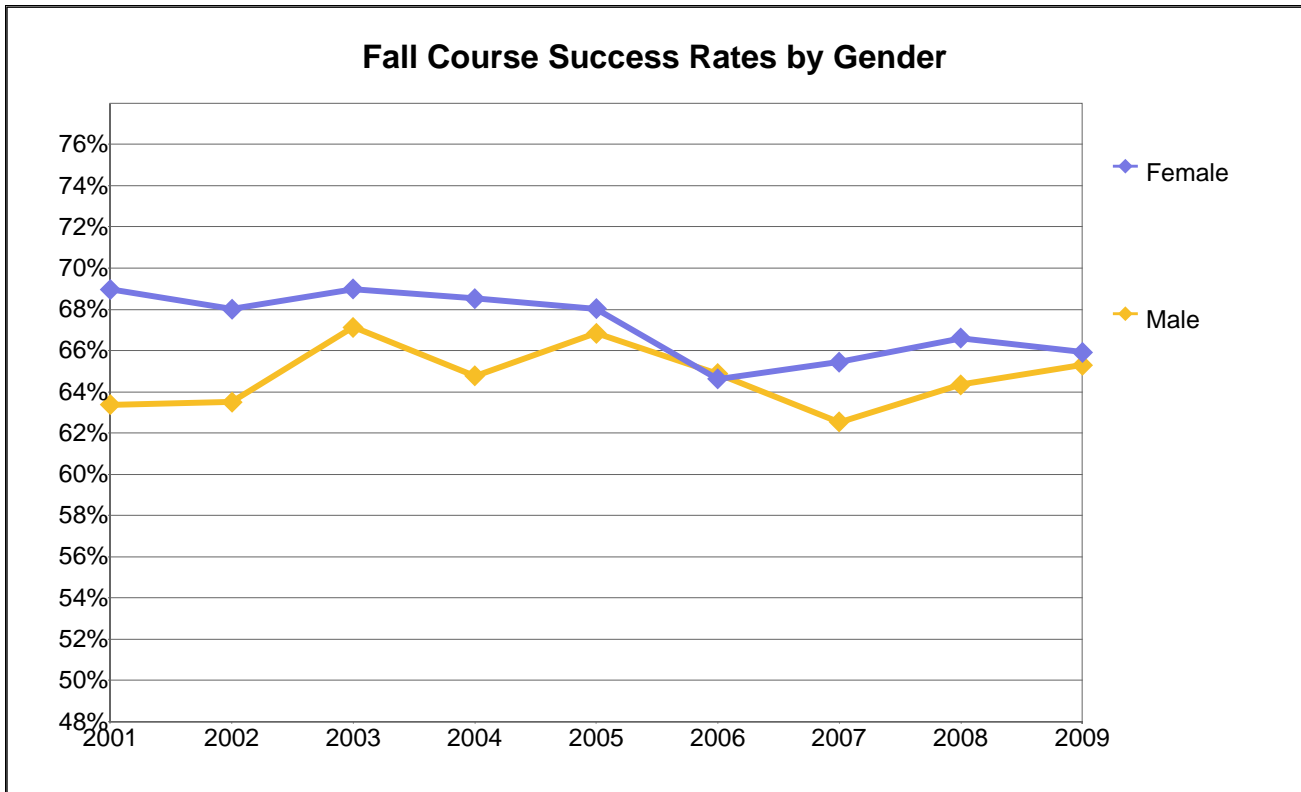
Number of Fall Successful Grades - All Students

Dimension	2001	2002	2003	2004	2005	2006	2007	2008	2009
All Students	7,709	8,236	8,149	7,462	7,789	8,060	8,273	8,548	9,673

Course Success Rates - All Students

Dimension	2001	2002	2003	2004	2005	2006	2007	2008	2009
All Students	66%	66%	68%	67%	67%	65%	64%	65%	65%

College of Alameda



Number of Fall Total Grades Awarded by Gender

Gender	2001	2002	2003	2004	2005	2006	2007	2008	2009
Female	6,481	6,729	6,450	6,017	6,088	6,876	7,025	7,018	7,775
Male	4,996	5,597	5,299	4,941	5,295	5,481	5,818	5,758	6,541
Unkwn	140	167	213	231	191	102	59	282	460
Total	11,617	12,493	11,962	11,189	11,574	12,459	12,902	13,058	14,776

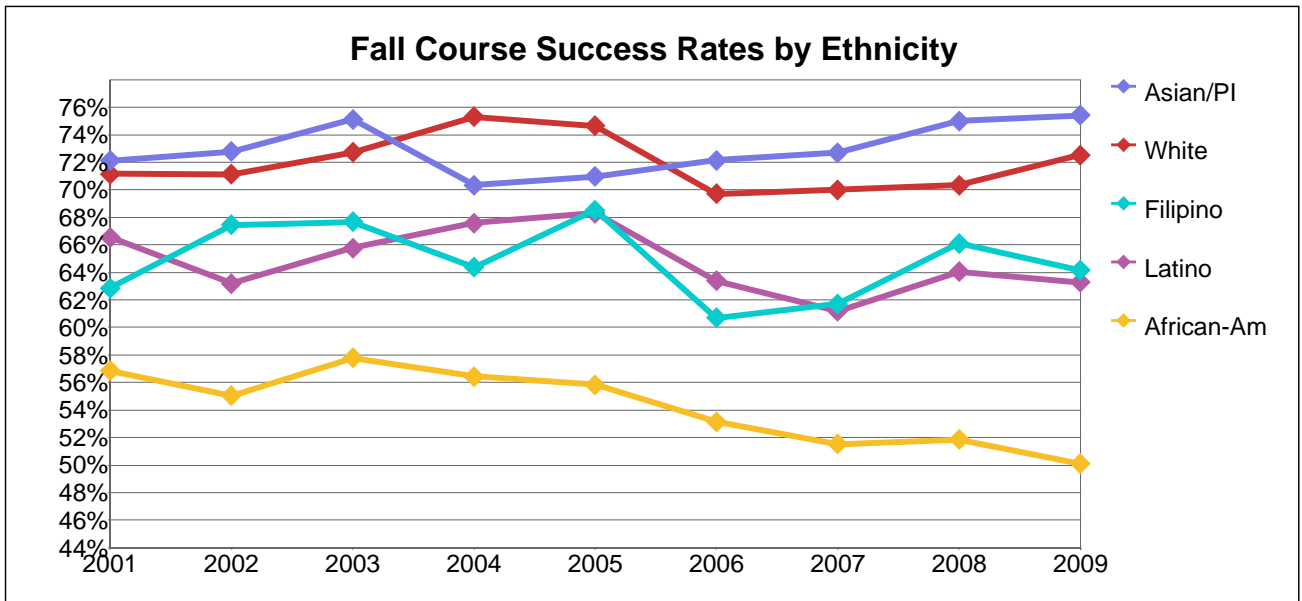
Number of Fall Successful Grades by Gender

Gender	2001	2002	2003	2004	2005	2006	2007	2008	2009
Female	4,469	4,577	4,449	4,123	4,142	4,443	4,597	4,674	5,126
Male	3,166	3,554	3,557	3,200	3,539	3,556	3,638	3,705	4,271
Unkwn	74	105	143	139	108	61	38	169	276
Total	7,709	8,236	8,149	7,462	7,789	8,060	8,273	8,548	9,673

Course Success Rates by Gender

Gender	2001	2002	2003	2004	2005	2006	2007	2008	2009
Female	69%	68%	69%	69%	68%	65%	65%	67%	66%
Male	63%	63%	67%	65%	67%	65%	63%	64%	65%
Unkwn	53%	63%	67%	60%	57%	60%	64%	60%	60%
All Students	66%	66%	68%	67%	67%	65%	64%	65%	65%

College of Alameda



Number of Fall Total Grades Awarded by Ethnicity

Ethnicity	2001	2002	2003	2004	2005	2006	2007	2008	2009
African-Am	3,235	3,296	3,033	2,783	2,958	3,172	3,416	3,310	3,210
Asian/PI	3,885	4,367	4,264	3,867	3,931	4,379	4,384	4,508	4,327
Filipino	563	670	594	570	572	613	525	528	452
Latino	1,247	1,348	1,338	1,385	1,435	1,467	1,651	1,508	1,452
Native Am	94	87	80	57	64	50	73	91	95
Other/Unkwn	682	758	761	835	913	989	1,080	1,418	3,641
White	1,911	1,967	1,892	1,692	1,701	1,789	1,773	1,695	1,599
Total	11,617	12,493	11,962	11,189	11,574	12,459	12,902	13,058	14,776

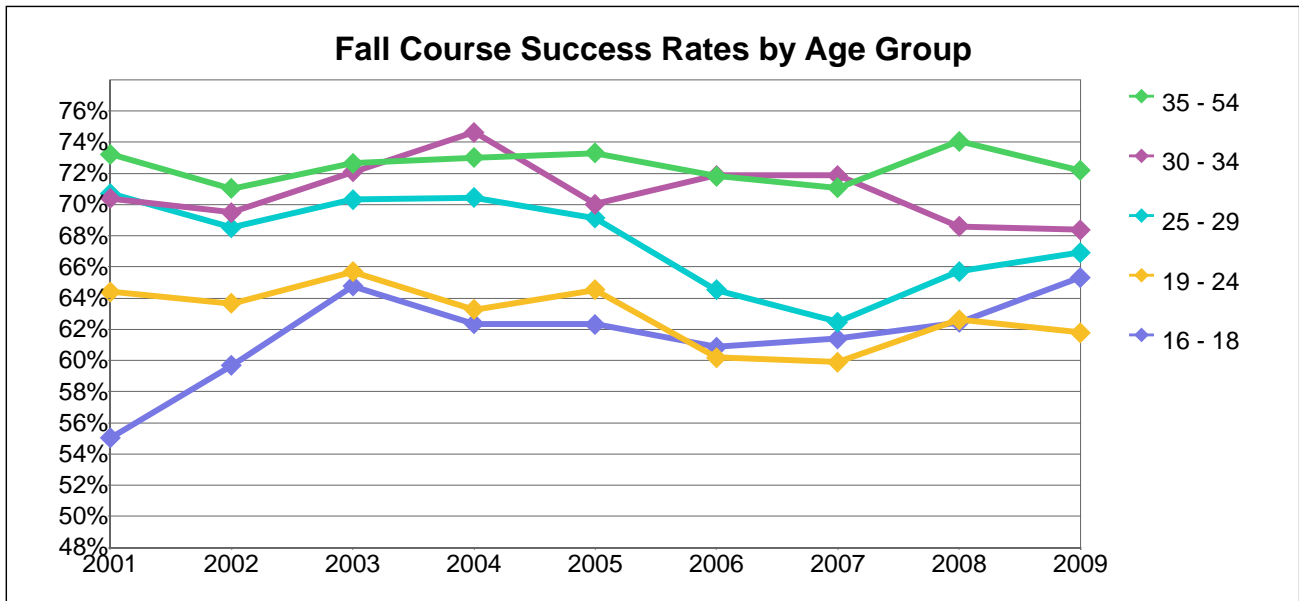
Number of Fall Successful Grades by Ethnicity

Ethnicity	2001	2002	2003	2004	2005	2006	2007	2008	2009
African-Am	1,839	1,814	1,753	1,571	1,652	1,686	1,760	1,716	1,608
Asian/PI	2,802	3,178	3,203	2,720	2,790	3,159	3,187	3,381	3,263
Filipino	354	452	402	367	392	372	324	349	290
Latino	830	852	880	936	980	930	1,010	966	919
Native Am	59	45	54	29	38	31	32	52	54
Other/Unkwn	465	496	481	565	667	635	719	892	2,379
White	1,360	1,399	1,376	1,274	1,270	1,247	1,241	1,192	1,160
Total	7,709	8,236	8,149	7,462	7,789	8,060	8,273	8,548	9,673

Course Success Rates by Ethnicity

Ethnicity	2001	2002	2003	2004	2005	2006	2007	2008	2009
African-Am	57%	55%	58%	56%	56%	53%	52%	52%	50%
Asian/PI	72%	73%	75%	70%	71%	72%	73%	75%	75%
Filipino	63%	67%	68%	64%	69%	61%	62%	66%	64%
Latino	67%	63%	66%	68%	68%	63%	61%	64%	63%
Native Am	63%	52%	68%	51%	59%	62%	44%	57%	57%
Other/Unkwn	68%	65%	63%	68%	73%	64%	67%	63%	65%
White	71%	71%	73%	75%	75%	70%	70%	70%	73%
All Students	66%	66%	68%	67%	67%	65%	64%	65%	65%

College of Alameda



Number of Fall Total Grades Awarded by Age Group

Age Group	2001	2002	2003	2004	2005	2006	2007	2008	2009
Under 16	50	55	29	29	203	175	268	80	87
16 - 18	1,657	1,736	1,530	1,625	1,669	2,101	2,153	1,978	2,357
19 - 24	5,024	5,522	5,718	5,321	5,188	5,459	5,632	6,093	6,774
25 - 29	1,355	1,496	1,358	1,245	1,451	1,452	1,583	1,744	1,996
30 - 34	996	990	924	879	844	924	931	920	1,151
35 - 54	2,096	2,205	2,017	1,742	1,756	1,881	1,874	1,872	2,006
55 and Over	439	489	386	348	463	467	461	371	405
Total	11,617	12,493	11,962	11,189	11,574	12,459	12,902	13,058	14,776

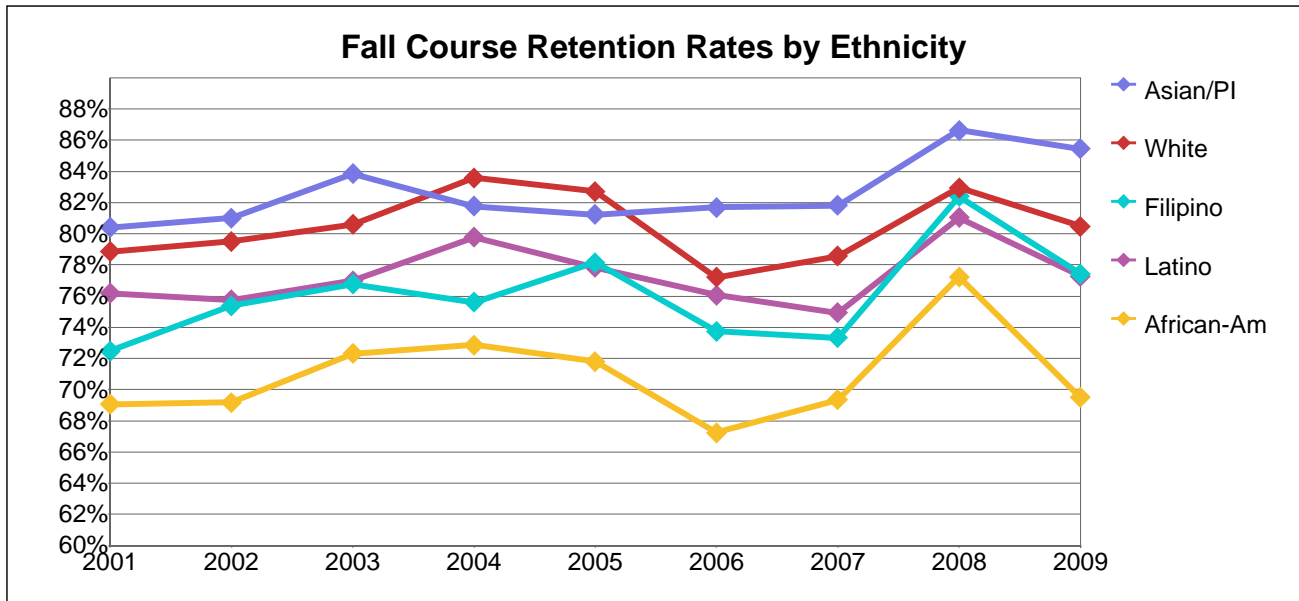
Number of Fall Successful Grades by Age Group

Age Group	2001	2002	2003	2004	2005	2006	2007	2008	2009
Under 16	33	33	26	20	185	152	218	56	70
16 - 18	912	1,036	991	1,013	1,040	1,279	1,322	1,235	1,540
19 - 24	3,236	3,515	3,756	3,367	3,348	3,286	3,373	3,815	4,186
25 - 29	958	1,025	955	877	1,003	937	989	1,146	1,336
30 - 34	701	688	666	656	591	664	669	631	787
35 - 54	1,535	1,566	1,465	1,272	1,287	1,351	1,332	1,386	1,448
55 and Over	334	373	290	257	335	391	370	279	306
Total	7,709	8,236	8,149	7,462	7,789	8,060	8,273	8,548	9,673

Course Success Rates by Age Group

Age Group	2001	2002	2003	2004	2005	2006	2007	2008	2009
Under 16	66%	60%	90%	69%	91%	87%	81%	70%	80%
16 - 18	55%	60%	65%	62%	62%	61%	61%	62%	65%
19 - 24	64%	64%	66%	63%	65%	60%	60%	63%	62%
25 - 29	71%	69%	70%	70%	69%	65%	62%	66%	67%
30 - 34	70%	69%	72%	75%	70%	72%	72%	69%	68%
35 - 54	73%	71%	73%	73%	73%	72%	71%	74%	72%
55 and Over	76%	76%	75%	74%	72%	84%	80%	75%	76%
All Students	66%	66%	68%	67%	67%	65%	64%	65%	65%

College of Alameda



Number of Fall Total Grades Awarded by Ethnicity

Ethnicity	2001	2002	2003	2004	2005	2006	2007	2008	2009
African-Am	3,235	3,296	3,033	2,783	2,958	3,172	3,416	3,310	3,210
Asian/PI	3,885	4,367	4,264	3,867	3,931	4,379	4,384	4,508	4,327
Filipino	563	670	594	570	572	613	525	528	452
Latino	1,247	1,348	1,338	1,385	1,435	1,467	1,651	1,508	1,452
Native Am	94	87	80	57	64	50	73	91	95
Other/Unkwn	682	758	761	835	913	989	1,080	1,418	3,641
White	1,911	1,967	1,892	1,692	1,701	1,789	1,773	1,695	1,599
Total	11,617	12,493	11,962	11,189	11,574	12,459	12,902	13,058	14,776

Number of Fall Completion Grades by Ethnicity

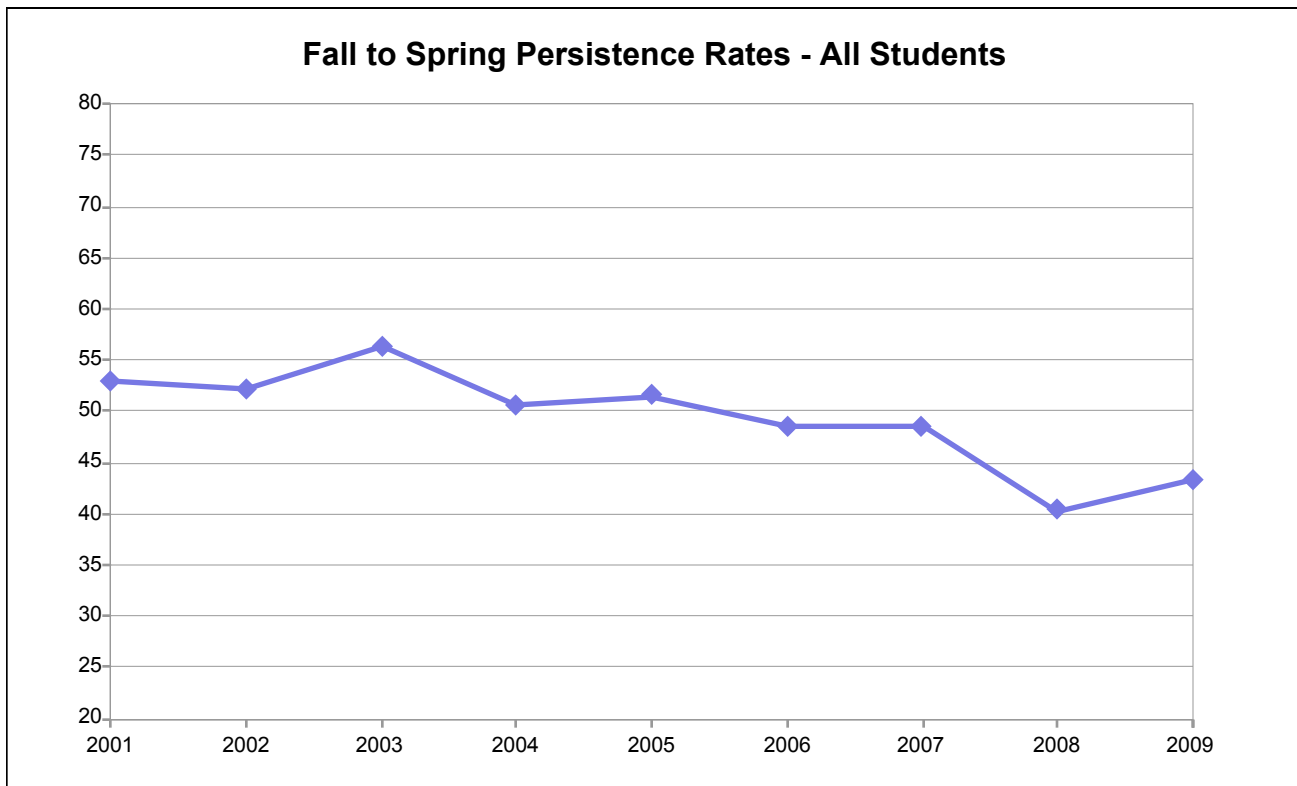
Ethnicity	2001	2002	2003	2004	2005	2006	2007	2008	2009
African-Am	2,234	2,280	2,193	2,028	2,124	2,133	2,369	2,556	2,231
Asian/PI	3,124	3,538	3,575	3,162	3,193	3,577	3,587	3,905	3,697
Filipino	408	505	456	431	447	452	385	435	350
Latino	950	1,021	1,030	1,105	1,117	1,116	1,237	1,222	1,122
Native Am	70	59	65	40	49	34	45	73	62
Other/Unkwn	524	572	574	667	743	741	827	1,120	2,861
White	1,507	1,564	1,525	1,414	1,407	1,381	1,393	1,406	1,287
Total	8,817	9,539	9,418	8,847	9,080	9,434	9,843	10,717	11,610

Course Retention Rates by Ethnicity

Ethnicity	2001	2002	2003	2004	2005	2006	2007	2008	2009
African-Am	69%	69%	72%	73%	72%	67%	69%	77%	70%
Asian/PI	80%	81%	84%	82%	81%	82%	82%	87%	85%
Filipino	72%	75%	77%	76%	78%	74%	73%	82%	77%
Latino	76%	76%	77%	80%	78%	76%	75%	81%	77%
Native Am	74%	68%	81%	70%	77%	68%	62%	80%	65%
Other/Unkwn	77%	75%	75%	80%	81%	75%	77%	79%	79%
White	79%	80%	81%	84%	83%	77%	79%	83%	80%
All Students	76%	76%	79%	79%	78%	76%	76%	82%	79%

Retention is defined as the number of grades of A, B, C, CR, D, NC, or F divided by the total number of official grades including official Ws.

College of Alameda



Number Enrolled at Fall Census - All Students

Dimension	2001	2002	2003	2004	2005	2006	2007	2008	2009
All Students	5,820	6,177	5,973	5,578	5,718	6,193	6,504	6,759	7,686

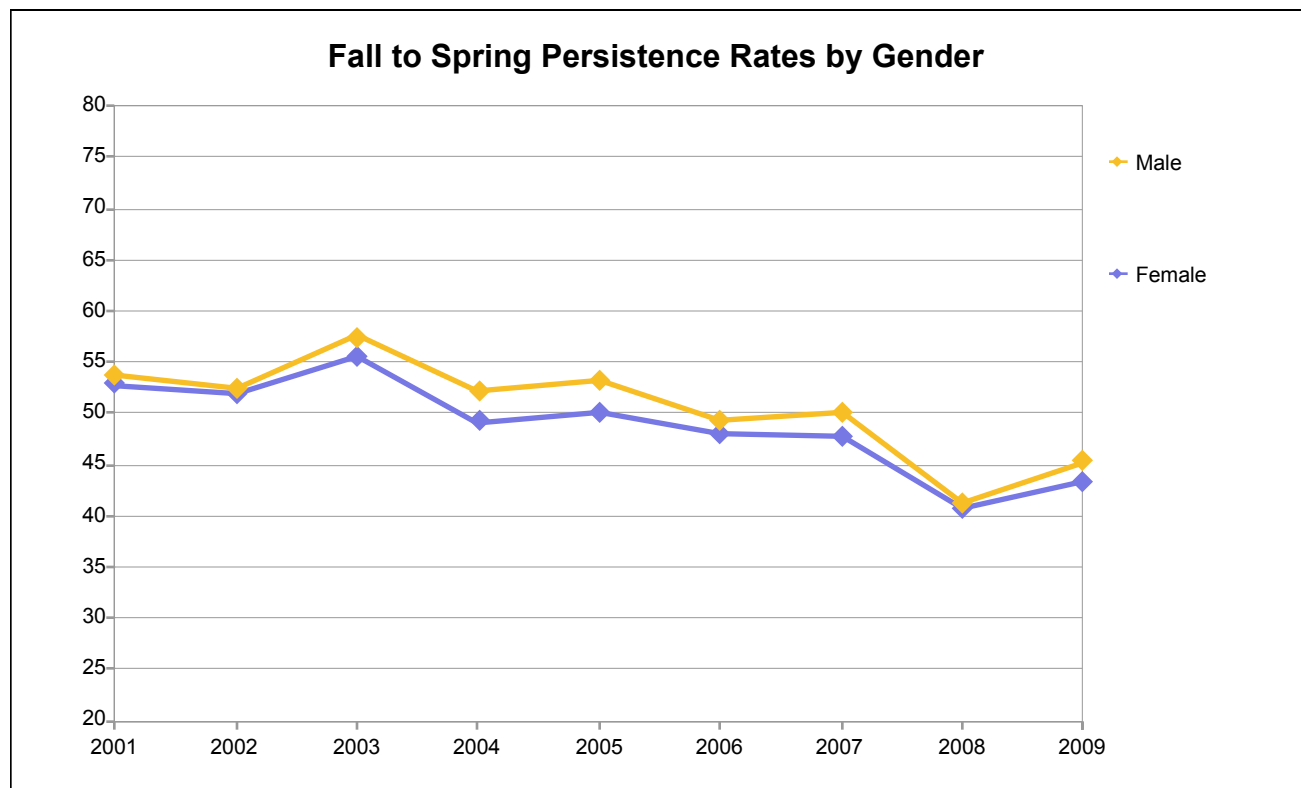
Number of Fall Persisting to Spring Opening Day - All Students

Dimension	2001	2002	2003	2004	2005	2006	2007	2008	2009
All Students	3,084	3,222	3,369	2,819	2,945	3,010	3,166	2,729	3,340

Fall to Spring Persistence Rates - All Students

Dimension	2001	2002	2003	2004	2005	2006	2007	2008	2009
All Students	53	52	56	51	52	49	49	40	43

College of Alameda



Number Enrolled at Fall Census by Gender

Gender	2001	2002	2003	2004	2005	2006	2007	2008	2009
Female	3,215	3,335	3,194	3,001	3,072	3,496	3,679	3,669	3,975
Male	2,505	2,733	2,653	2,452	2,549	2,642	2,790	2,795	3,154
Unkwn	100	109	126	125	97	55	35	295	557
Total	5,820	6,177	5,973	5,578	5,718	6,193	6,504	6,759	7,686

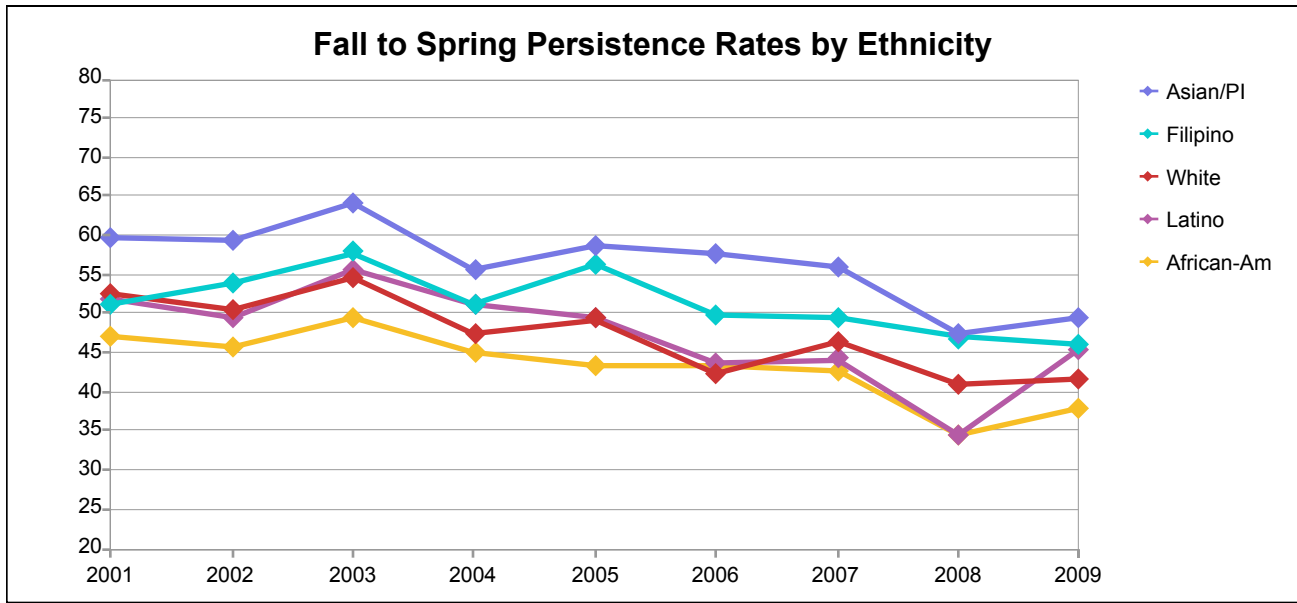
Number of Fall Persisting to Spring Opening Day by Gender

Gender	2001	2002	2003	2004	2005	2006	2007	2008	2009
Female	1,699	1,730	1,773	1,477	1,543	1,680	1,754	1,494	1,722
Male	1,347	1,434	1,526	1,278	1,357	1,306	1,397	1,153	1,430
Unkwn	38	58	70	64	45	24	15	82	188
Total	3,084	3,222	3,369	2,819	2,945	3,010	3,166	2,729	3,340

Fall to Spring Persistence Rates by Gender

Gender	2001	2002	2003	2004	2005	2006	2007	2008	2009
Female	53	52	56	49	50	48	48	41	43
Male	54	52	58	52	53	49	50	41	45
Unkwn	38	53	56	51	46	44	43	28	34
Total	53	52	56	51	52	49	49	40	43

College of Alameda



Number Enrolled at Fall Census by Ethnicity

Ethnicity	2001	2002	2003	2004	2005	2006	2007	2008	2009
African-Am	1,492	1,526	1,478	1,317	1,465	1,529	1,587	1,701	1,557
Asian/PI	1,905	2,105	2,087	1,926	1,905	2,100	2,232	2,231	2,007
Filipino	272	307	263	277	251	285	251	260	221
Latino	623	686	666	672	714	761	861	836	752
Native Am	48	45	37	32	28	36	37	139	43
Other/Unkwn	411	452	454	430	444	500	551	640	2,272
White	1,069	1,056	988	924	911	982	985	952	834
Total	5,820	6,177	5,973	5,578	5,718	6,193	6,504	6,759	7,686

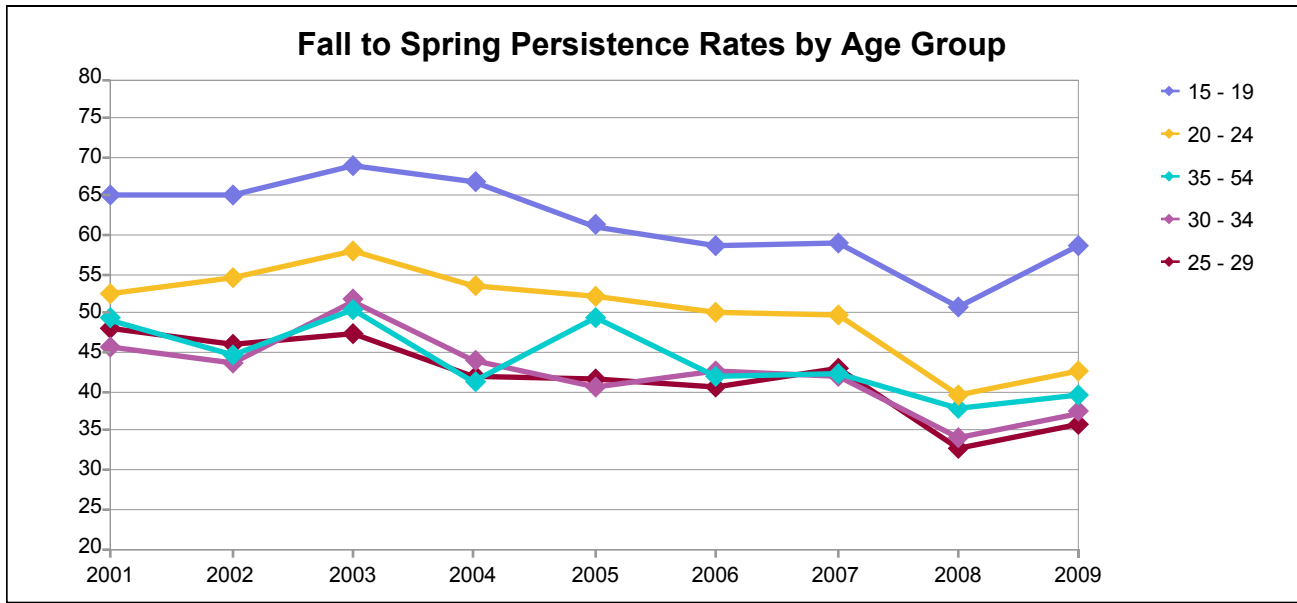
Number of Fall Persisting to Spring Opening Day by Ethnicity

Ethnicity	2001	2002	2003	2004	2005	2006	2007	2008	2009
African-Am	703	699	731	595	636	662	678	586	590
Asian/PI	1,137	1,248	1,340	1,071	1,116	1,211	1,248	1,059	993
Filipino	139	165	152	142	141	142	124	122	102
Latino	323	339	371	344	352	332	380	288	341
Native Am	28	26	21	16	20	10	16	74	18
Other/Unkwn	192	211	213	214	231	236	262	209	949
White	562	534	541	437	449	417	458	391	347
Total	3,084	3,222	3,369	2,819	2,945	3,010	3,166	2,729	3,340

Fall to Spring Persistence Rates by Ethnicity

Ethnicity	2001	2002	2003	2004	2005	2006	2007	2008	2009
African-Am	47.1	45.8	49.5	45.2	43.4	43.3	42.7	34.5	37.9
Asian/PI	59.7	59.3	64.2	55.6	58.6	57.7	55.9	47.5	49.5
Filipino	51.1	53.7	57.8	51.3	56.2	49.8	49.4	46.9	46.2
Latino	51.8	49.4	55.7	51.2	49.3	43.6	44.1	34.4	45.3
Native Am	58.3	57.8	56.8	50.0	71.4	27.8	43.2	53.2	41.9
Other/Unkwn	46.7	46.7	46.9	49.8	52.0	47.2	47.5	32.7	41.8
White	52.6	50.6	54.8	47.3	49.3	42.5	46.5	41.1	41.6
All	53.0	52.2	56.4	50.5	51.5	48.6	48.7	40.4	43.5

College of Alameda



Number Enrolled at Fall Census by Age Group

Age Group	2001	2002	2003	2004	2005	2006	2007	2008	2009
15 - 19	1,142	1,274	1,137	1,142	1,218	1,360	1,440	1,443	1,607
20 - 24	1,678	1,773	1,985	1,818	1,751	1,835	1,998	2,200	2,504
25 - 29	834	837	797	728	842	877	945	1,078	1,205
30 - 34	590	610	567	517	518	580	564	579	685
35 - 54	1,246	1,340	1,229	1,105	1,075	1,187	1,170	1,182	1,265
55 and Over	319	329	251	266	283	306	322	266	302
Other/Unkwn	11	14	7	2	31	48	65	11	118
Total	5,820	6,177	5,973	5,578	5,718	6,193	6,504	6,759	7,686

Number of Fall Persisting to Spring Opening Day by Age Group

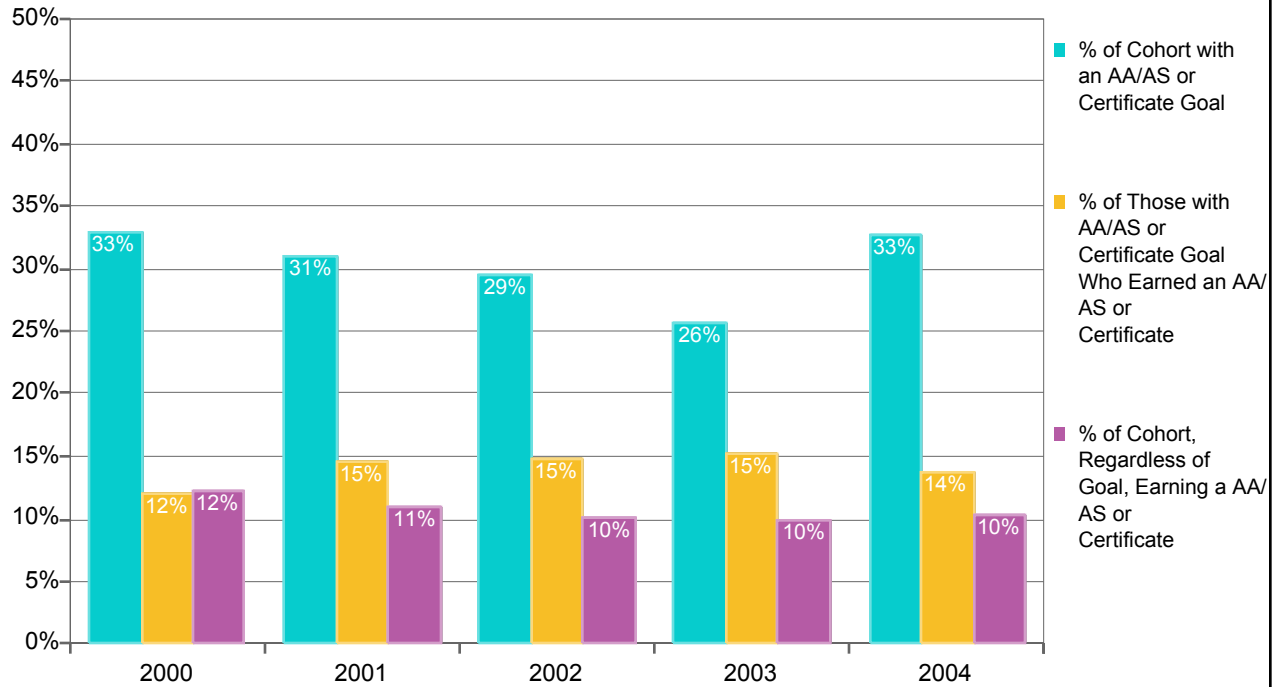
Age Group	2001	2002	2003	2004	2005	2006	2007	2008	2009
15 - 19	744	832	784	764	746	799	852	734	943
20 - 24	881	966	1,153	974	912	923	996	872	1,068
25 - 29	402	386	378	305	350	356	405	354	431
30 - 34	269	267	293	227	211	247	236	197	256
35 - 54	614	599	620	456	531	499	496	449	499
55 and Over	169	169	137	91	168	148	137	119	116
Other/Unkwn	5	3	4	2	27	38	44	4	27
Total	3,084	3,222	3,369	2,819	2,945	3,010	3,166	2,729	3,340

Fall to Spring Persistence Rates by Age Group

Age Group	2001	2002	2003	2004	2005	2006	2007	2008	2009
15 - 19	65	65	69	67	61	59	59	51	59
20 - 24	53	54	58	54	52	50	50	40	43
25 - 29	48	46	47	42	42	41	43	33	36
30 - 34	46	44	52	44	41	43	42	34	37
35 - 54	49	45	50	41	49	42	42	38	39
55 and Over	53	51	55	34	59	48	43	45	38
Other/Unkwn	45	21	57	100	87	79	68	36	23
Total	53	52	56	51	52	49	49	40	43

College of Alameda

Percentages of the Fall First-Time College Cohorts with AA/AS or Certificate Goals, Those with Goals Earning an Award, and Those Earning an Award Regardless of Goal within Six Years

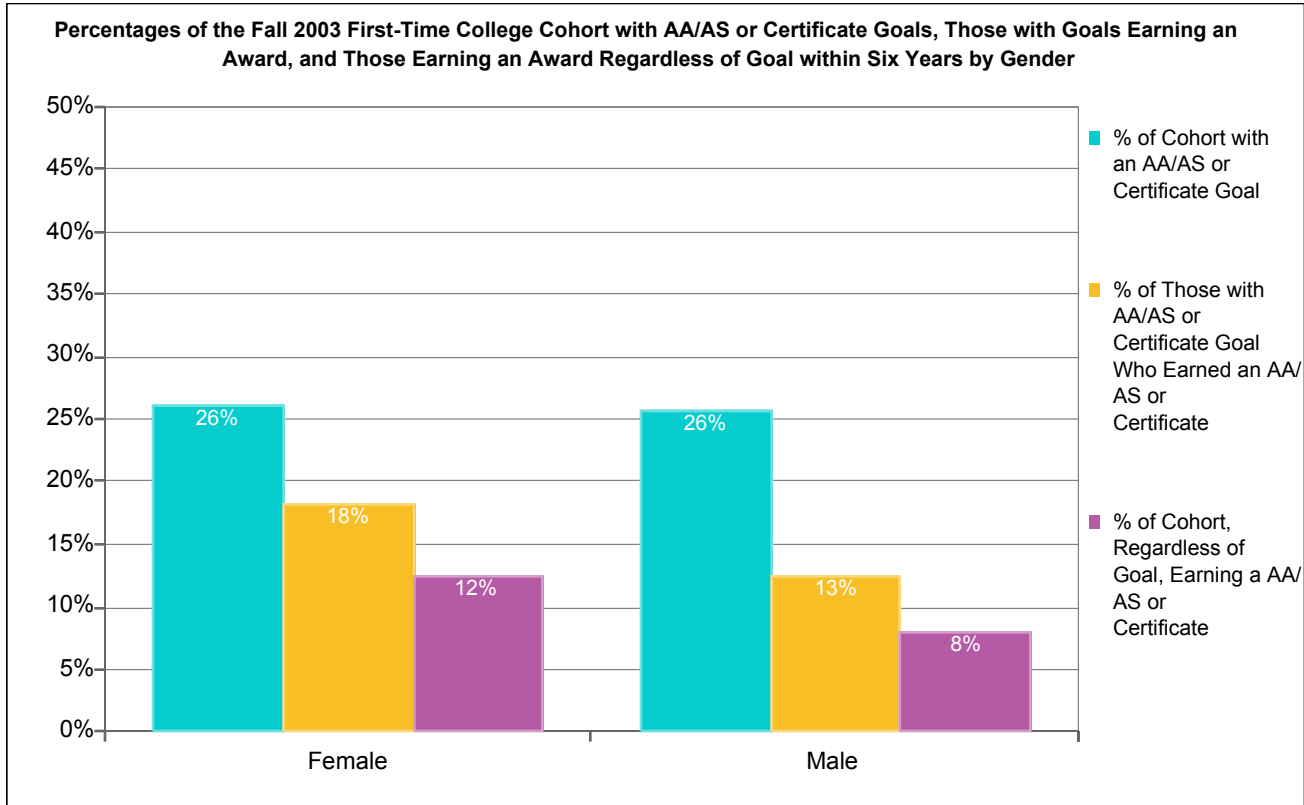


Count and Percentage Tracking of the Fall Matriculated First-Time College Cohorts for AA/AS Degree or Certificate Goals and AA/AS or Certificate Awards within Six Years

Fall First-time College Cohort	Count of Fall Cohort	Count of Cohort with AA/AS or Certificate Goal	Percent of Cohort with AA/AS or Certificate Goal	Count of Cohort with AA/AS or Certificate Goal Who Earned an AA/AS or Certificate	Percent of Those with AA/AS or Certificate Goal Who Earned an AA/AS or Certificate	Count of Cohort, Regardless of Goal, Earning a Degree or Certificate	Percent of Cohort, Regardless of Goal, Earning a Degree or Certificate
2000	909	300	33%	36	12%	111	12%
2001	1,036	322	31%	47	15%	114	11%
2002	1,053	310	29%	46	15%	107	10%
2003	1,080	278	26%	42	15%	108	10%
2004	913	299	33%	41	14%	94	10%
Totals	4,991	1,509	30%	212	14%	534	11%

Note: The cohort consists of Fall students enrolled at census with an Enrollment Status of "First-Time College" and with a Matriculation Status of "Matriculated." The student's goal is the Informed or Matriculation Goal with values of 1, 3, 4, or 5, i.e., the goals of Transfer with an AA/AS, AA/AS General Education, AA/AS Vocational, or Certificate. Students are individually tracked to determine the number of the cohort, the number of those with the indicated goals who earn an AA/AS degree or Certificate at any Peralta CCD college, and the number who, regardless of goal, earn an AA/AS degree or Certificate at any Peralta CCD college within the indicated number of years.

College of Alameda

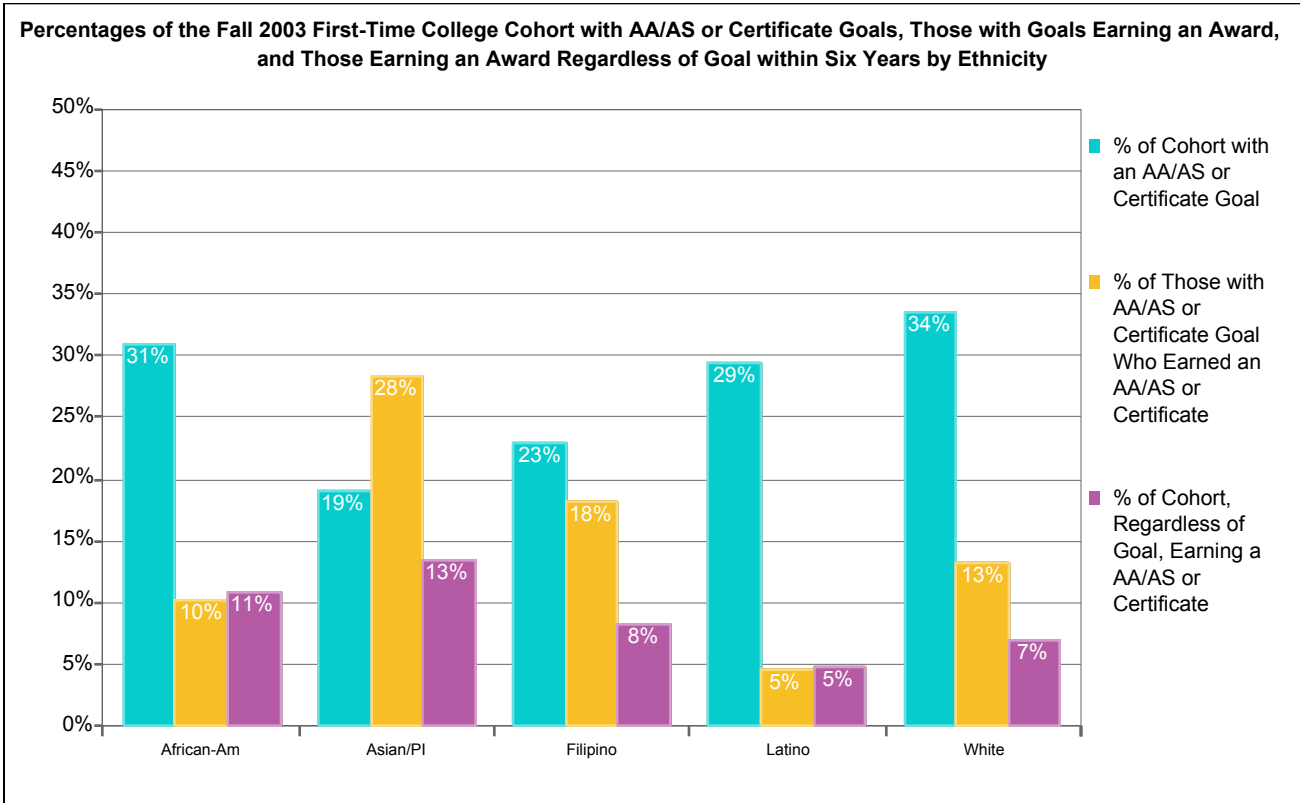


Count and Percentage Tracking of the Fall 2003 Matriculated First-Time College Cohort for AA/AS Degree or Certificate Goals and AA/AS or Certificate Awards within Six Years by Gender

Gender	Count of Fall Cohort	Count of Cohort with AA/AS or Certificate Goal	Percent of Cohort with AA/AS or Certificate Goal	Count of Cohort with AA/AS or Certificate Goal Who Earned an AA/AS or Certificate	Percent of Those with AA/AS or Certificate Goal Who Earned an AA/AS or Certificate	Count of Cohort, Regardless of Goal, Earning a Degree or Certificate	Percent of Cohort, Regardless of Goal, Earning a Degree or Certificate
Female	526	137	26%	25	18%	65	12%
Male	528	136	26%	17	13%	42	8%
Unkwn	26	5	19%	0	0%	1	4%
Totals	1,080	278	26%	42	15%	108	10%

Note: The cohort consists of Fall students enrolled at census with an Enrollment Status of "First-Time College" and with a Matriculation Status of "Matriculated." The student's goal is the Informed or Matriculation Goal with values of 1, 3, 4, or 5, i.e., the goals of Transfer with an AA/AS, AA/AS General Education, AA/AS Vocational, or Certificate. Students are individually tracked to determine the number of the cohort, the number of those with the indicated goals who earn an AA/AS degree or Certificate at any Peralta CCD college, and the number who, regardless of goal, earn an AA/AS degree or Certificate at any Peralta CCD college within the indicated number of years.

College of Alameda

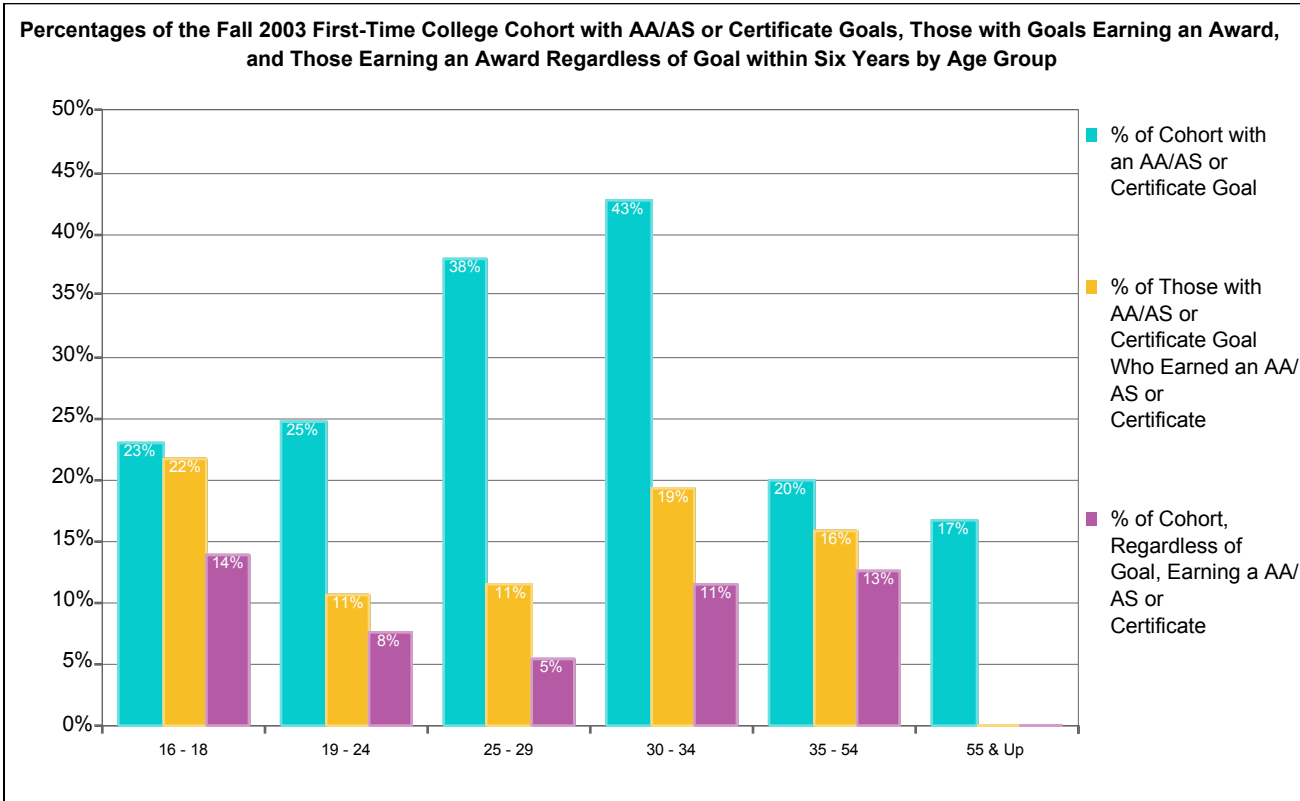


Count and Percentage Tracking of the Fall 2003 Matriculated First-Time College Cohort for AA/AS Degree or Certificate Goals and AA/AS or Certificate Awards within Six Years by Ethnicity

Ethnicity	Count of Fall Cohort	Count of Cohort with AA/AS or Certificate Goal	Percent of Cohort with AA/AS or Certificate Goal	Count of Cohort with AA/AS or Certificate Goal Who Earned an AA/AS or Certificate	Percent of Those with AA/AS or Certificate Goal Who Earned an AA/AS or Certificate	Count of Cohort, Regardless of Goal, Earning a Degree or Certificate	Percent of Cohort, Regardless of Goal, Earning a Degree or Certificate
African-Am	256	79	31%	8	10%	28	11%
Asian/PI	389	74	19%	21	28%	52	13%
Filipino	48	11	23%	2	18%	4	8%
Latino	146	43	29%	2	5%	7	5%
Native Am	6	2	33%	0	0%	0	0%
Other/Unkw	77	16	21%	2	13%	6	8%
White	158	53	34%	7	13%	11	7%
Totals	1,080	278	26%	42	15%	108	10%

Note: The cohort consists of Fall students enrolled at census with an Enrollment Status of "First-Time College" and with a Matriculation Status of "Matriculated." The student's goal is the Informed or Matriculation Goal with values of 1, 3, 4, or 5, i.e., the goals of Transfer with an AA/AS, AA/AS General Education, AA/AS Vocational, or Certificate. Students are individually tracked to determine the number of the cohort, the number of those with the indicated goals who earn an AA/AS degree or Certificate at any Peralta CCD college, and the number who, regardless of goal, earn an AA/AS degree or Certificate at any Peralta CCD college within the indicated number of years.

College of Alameda



Count and Percentage Tracking of the Fall 2003 Matriculated First-Time College Cohort for AA/AS Degree or Certificate Goals and AA/AS or Certificate Awards within Six Years by Age Group

Age Group	Count of Fall Cohort	Count of Cohort with AA/AS or Certificate Goal	Percent of Cohort with AA/AS or Certificate Goal	Count of Cohort with AA/AS or Certificate Goal Who Earned an AA/AS or Certificate	Percent of Those with AA/AS or Certificate Goal Who Earned an AA/AS or Certificate	Count of Cohort, Regardless of Goal, Earning a Degree or Certificate	Percent of Cohort, Regardless of Goal, Earning a Degree or Certificate
16 - 18	361	83	23%	18	22%	50	14%
19 - 24	453	112	25%	12	11%	34	8%
25 - 29	92	35	38%	4	11%	5	5%
30 - 34	61	26	43%	5	19%	7	11%
35 - 54	95	19	20%	3	16%	12	13%
55 & Up	18	3	17%	0	0%	0	0%
Totals	1,080	278	26%	42	15%	108	10%

Note: The cohort consists of Fall students enrolled at census with an Enrollment Status of "First-Time College" and with a Matriculation Status of "Matriculated." The student's goal is the Informed or Matriculation Goal with values of 1, 3, 4, or 5, i.e., the goals of Transfer with an AA/AS, AA/AS General Education, AA/AS Vocational, or Certificate. Students are individually tracked to determine the number of the cohort, the number of those with the indicated goals who earn an AA/AS degree or Certificate at any Peralta CCD college, and the number who, regardless of goal, earn an AA/AS degree or Certificate at any Peralta CCD college within the indicated number of years.