



Peralta Facts

Student Outcomes

Berkeley City College

March 2010

Peralta Community College District

Office of Institutional Research

Peralta Facts Student Outcomes

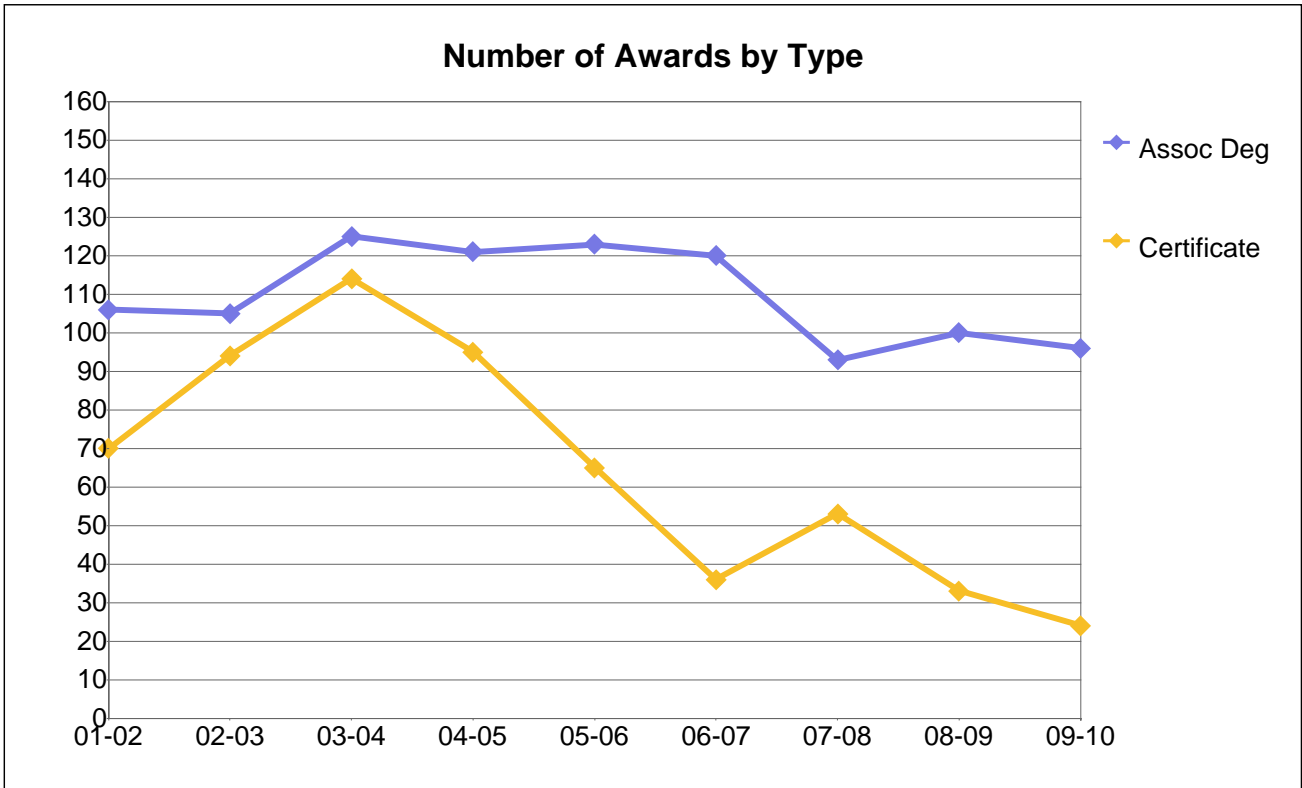
Peralta Community College District

Table of Contents

Number of Awards by Type (Degrees and Certificates).....	1
Number of Associate Degrees by Gender.....	2
Number of Associate Degrees by Ethnicity.....	3
Number of Associate Degrees by Age Group.....	4
Number of Certificates by Gender.....	5
Number of Certificates by Ethnicity.....	6
Number of Certificates by Age Group.....	7
Number of Transfers to CSU and UC by Year.....	8
Number of Transfers to UC by Ethnicity.....	9
Number of Transfer to CSU by Ethnicity.....	10
Fall Grade Frequency and Percentage Distribution by Year.....	11
Fall Course Success Rate by All Students.....	12
Fall Course Success Rate by Gender.....	13
Fall Course Success Rates by Ethnicity.....	14
Fall Course Success Rates by Age Group.....	15
Fall Course Retention Rates by Ethnicity.....	16
Fall to Spring Persistence Counts and Rates by All Students.....	17
Fall to Spring Persistence Counts and Rates by Gender.....	18
Fall to Spring Persistence Counts and Rates by Ethnicity.....	19
Fall to Spring Persistence Counts and Rates by Age Group.....	20
Tracking of Fall First-time Cohorts by Goal and Completion.....	21

Tracking of Fall 2003 First-time Cohorts by Goal and Completion by Gender	22
Tracking of Fall 2003 First-time Cohorts by Goal and Completion by Ethnicity.....	23
Tracking of Fall 2003 First-time Cohorts by Goal and Completion by Age Group	24

Berkeley City College



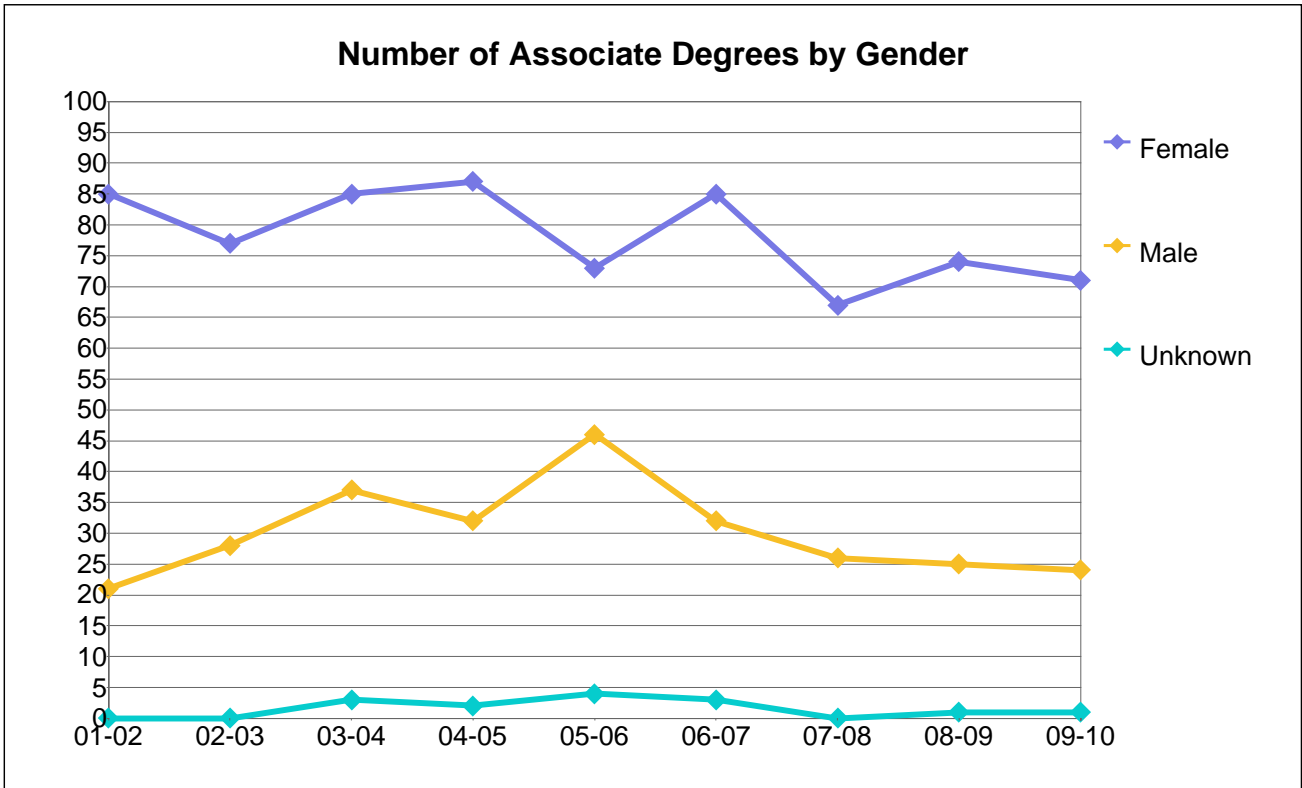
Number of Awards by Type

Deg or Cert	01-02	02-03	03-04	04-05	05-06	06-07	07-08	08-09	09-10
Assoc Deg	106	105	125	121	123	120	93	100	96
Certificate	70	94	114	95	65	36	53	33	24
Total	176	199	239	216	188	156	146	133	120

Percentage Distribution of Awards by Type

Deg or Cert	01-02	02-03	03-04	04-05	05-06	06-07	07-08	08-09	09-10
Assoc Deg	60%	53%	52%	56%	65%	77%	64%	75%	80%
Certificate	40%	47%	48%	44%	35%	23%	36%	25%	20%
Total	100%	100%	100%	100%	100%	100%	100%	100%	100%

Berkeley City College



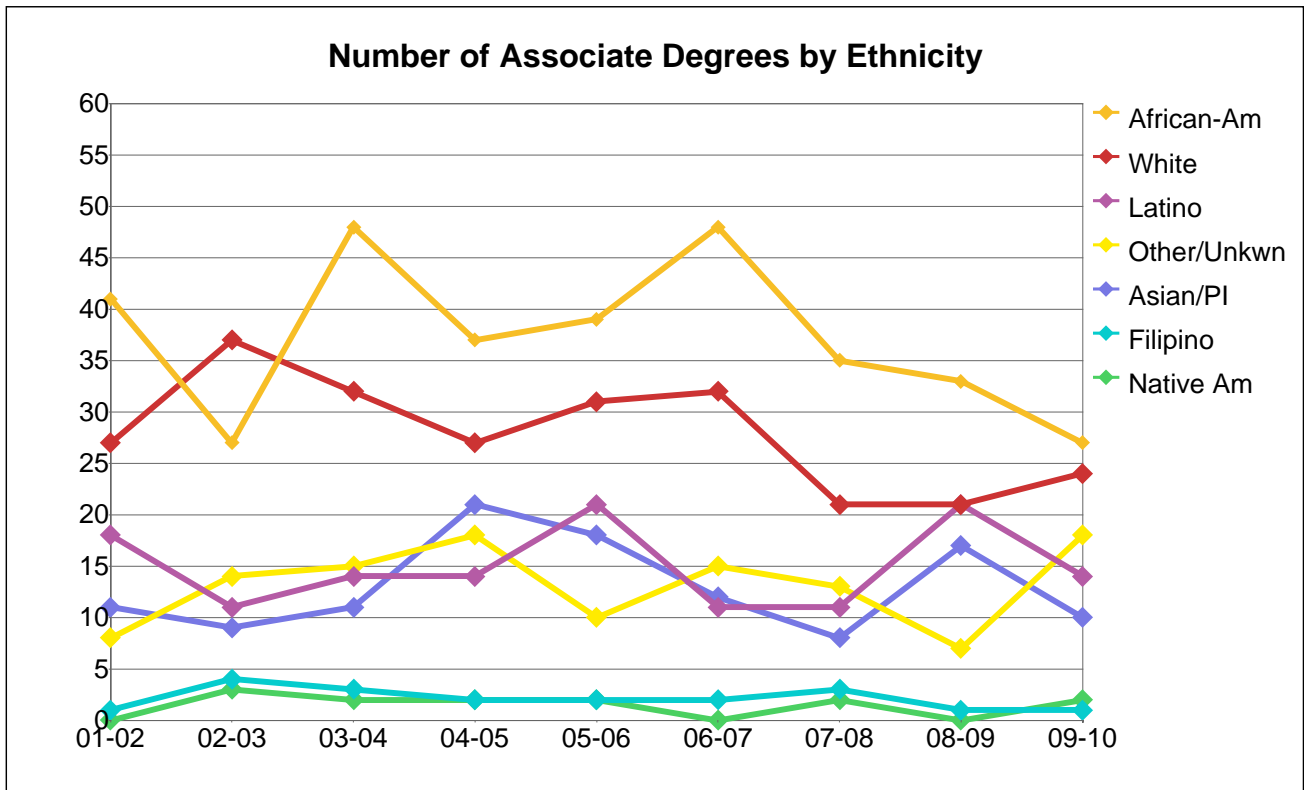
Number of Associate Degrees by Gender

Gender	01-02	02-03	03-04	04-05	05-06	06-07	07-08	08-09	09-10
Female	85	77	85	87	73	85	67	74	71
Male	21	28	37	32	46	32	26	25	24
Unknown	0		3	2	4	3		1	1
Total	106	105	125	121	123	120	93	100	96

Percentage Distribution of Associate Degrees by Gender

Gender	01-02	02-03	03-04	04-05	05-06	06-07	07-08	08-09	09-10
Female	80%	73%	68%	72%	59%	71%	72%	74%	74%
Male	20%	27%	30%	26%	37%	27%	28%	25%	25%
Unknown	0%		2%	2%	3%	3%		1%	1%
Total	100%	100%	100%	100%	100%	100%	100%	100%	100%

Berkeley City College



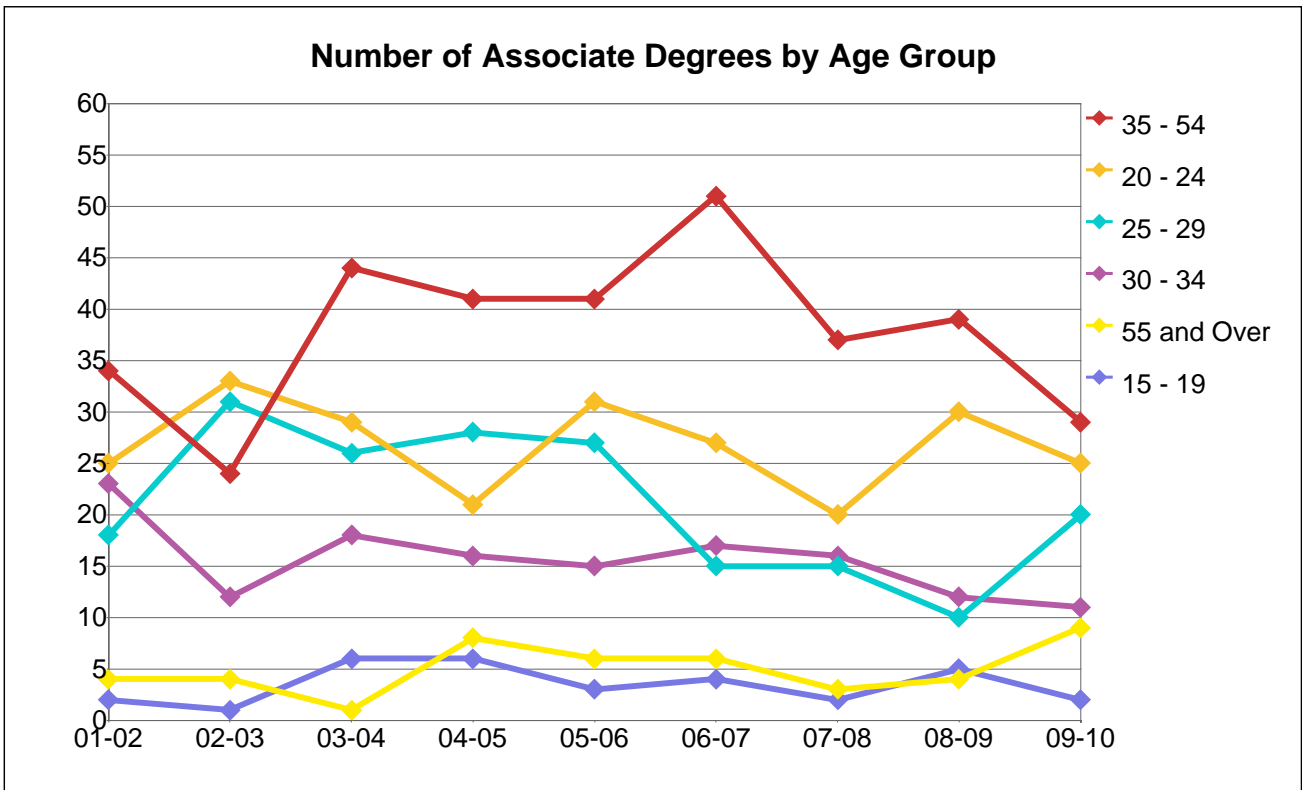
Number of Associate Degrees by Ethnicity

Ethnicity	01-02	02-03	03-04	04-05	05-06	06-07	07-08	08-09	09-10
African-Am	41	27	48	37	39	48	35	33	27
Asian/PI	11	9	11	21	18	12	8	17	10
Filipino	1	4	3	2	2	2	3	1	1
Latino	18	11	14	14	21	11	11	21	14
Native Am		3	2	2	2	0	2		2
Other/Unkwn	8	14	15	18	10	15	13	7	18
White	27	37	32	27	31	32	21	21	24
Total	106	105	125	121	123	120	93	100	96

Percentage Distribution of Associate Degrees by Ethnicity

Ethnicity	01-02	02-03	03-04	04-05	05-06	06-07	07-08	08-09	09-10
African-Am	39%	26%	38%	31%	32%	40%	38%	33%	28%
Asian/PI	10%	9%	9%	17%	15%	10%	9%	17%	10%
Filipino	1%	4%	2%	2%	2%	2%	3%	1%	1%
Latino	17%	10%	11%	12%	17%	9%	12%	21%	15%
Native Am		3%	2%	2%	2%	0%	2%		2%
Other/Unkwn	8%	13%	12%	15%	8%	13%	14%	7%	19%
White	25%	35%	26%	22%	25%	27%	23%	21%	25%
Total	100%	100%	100%	100%	100%	100%	100%	100%	100%

Berkeley City College



Number of Associate Degrees by Age Group

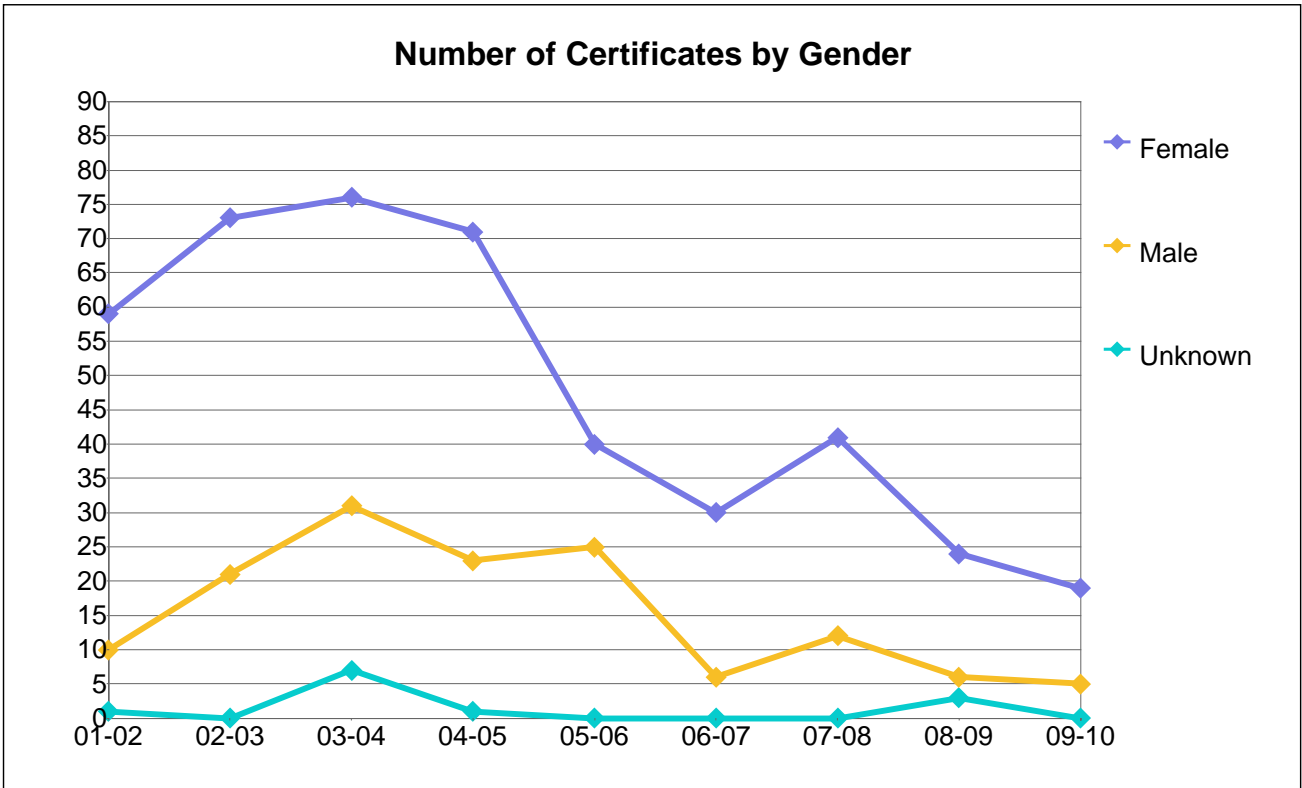
Age Group	01-02	02-03	03-04	04-05	05-06	06-07	07-08	08-09	09-10
15 - 19	2	1	6	6	3	4	2	5	2
20 - 24	25	33	29	21	31	27	20	30	25
25 - 29	18	31	26	28	27	15	15	10	20
30 - 34	23	12	18	16	15	17	16	12	11
35 - 54	34	24	44	41	41	51	37	39	29
55 and Ove	4	4	1	8	6	6	3	4	9
Unkwn			1	1					
Total	106	105	125	121	123	120	93	100	96

Percentage Distribution of Associate Degrees by Age Group

Age Group	01-02	02-03	03-04	04-05	05-06	06-07	07-08	08-09	09-10
15 - 19	2%	1%	5%	5%	2%	3%	2%	5%	2%
20 - 24	24%	31%	23%	17%	25%	23%	22%	30%	26%
25 - 29	17%	30%	21%	23%	22%	13%	16%	10%	21%
30 - 34	22%	11%	14%	13%	12%	14%	17%	12%	11%
35 - 54	32%	23%	35%	34%	33%	43%	40%	39%	30%
55 and Over	4%	4%	1%	7%	5%	5%	3%	4%	9%
Unkwn			1%	1%					
Total	100%	100%	100%	100%	100%	100%	100%	100%	100%

Note: Age as of 12/15 of the award year.

Berkeley City College



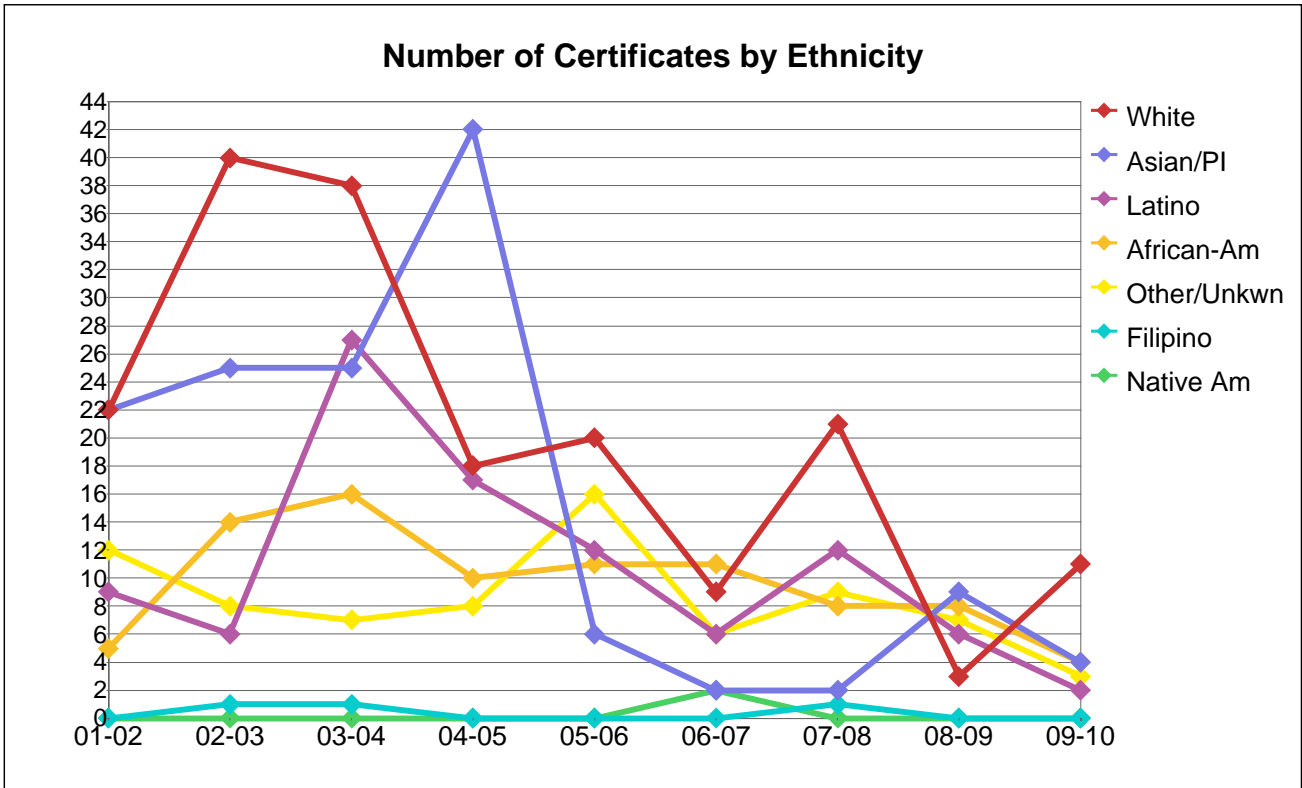
Number of Certificates by Gender

Gender	01-02	02-03	03-04	04-05	05-06	06-07	07-08	08-09	09-10
Female	59	73	76	71	40	30	41	24	19
Male	10	21	31	23	25	6	12	6	5
Unknown	1		7	1	0	0		3	0
Total	70	94	114	95	65	36	53	33	24

Percentage Distribution of Certificates by Gender

Gender	01-02	02-03	03-04	04-05	05-06	06-07	07-08	08-09	09-10
Female	84%	78%	67%	75%	62%	83%	77%	73%	79%
Male	14%	22%	27%	24%	38%	17%	23%	18%	21%
Unknown	1%		6%	1%	0%	0%		9%	0%
Total	100%	100%	100%	100%	100%	100%	100%	100%	100%

Berkeley City College



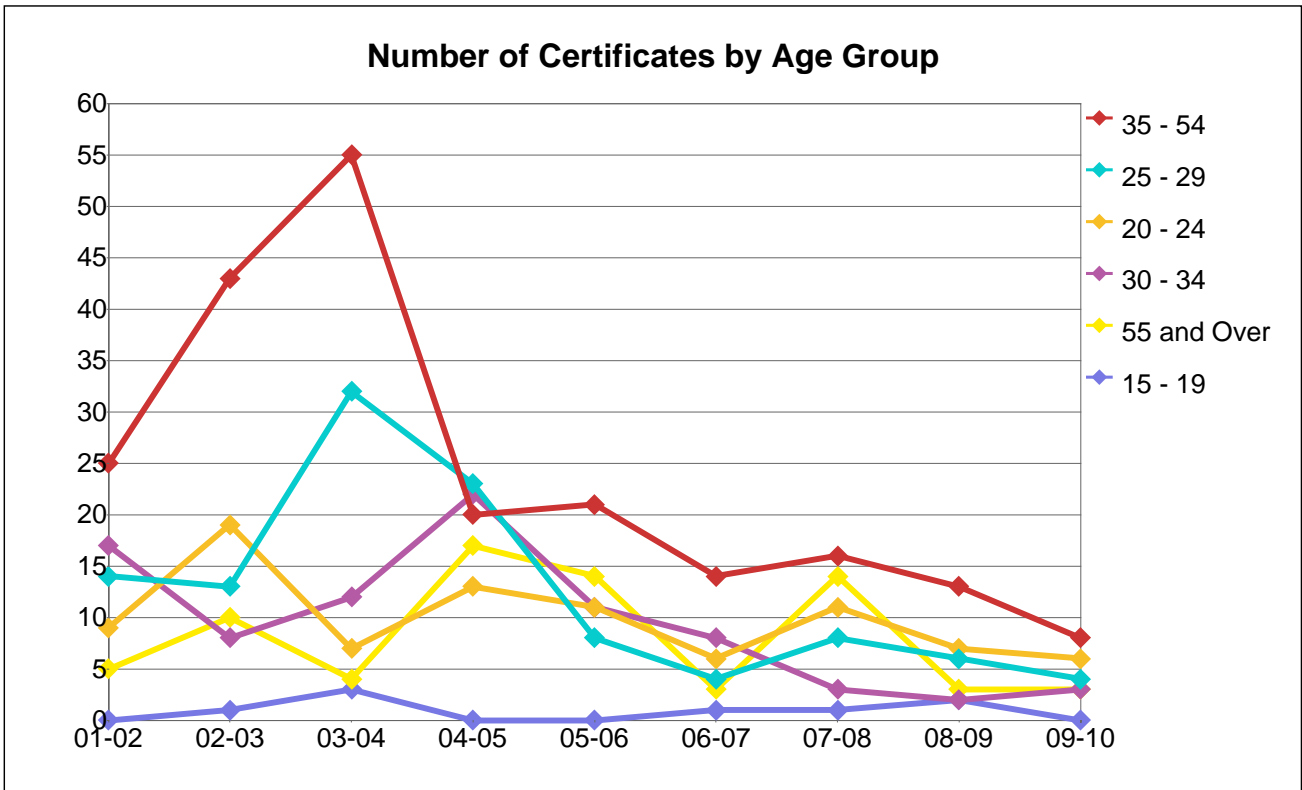
Number of Certificates by Ethnicity

Ethnicity	01-02	02-03	03-04	04-05	05-06	06-07	07-08	08-09	09-10
African-Am	5	14	16	10	11	11	8	8	4
Asian/PI	22	25	25	42	6	2	2	9	4
Filipino	0	1	1	0	0	0	1	0	0
Latino	9	6	27	17	12	6	12	6	2
Native Am		0	0	0	0	2	0		0
Other/Unkwn	12	8	7	8	16	6	9	7	3
White	22	40	38	18	20	9	21	3	11
Total	70	94	114	95	65	36	53	33	24

Percentage Distribution of Certificates by Ethnicity

Ethnicity	01-02	02-03	03-04	04-05	05-06	06-07	07-08	08-09	09-10
African-Am	7%	15%	14%	11%	17%	31%	15%	24%	17%
Asian/PI	31%	27%	22%	44%	9%	6%	4%	27%	17%
Filipino	0%	1%	1%	0%	0%	0%	2%	0%	0%
Latino	13%	6%	24%	18%	18%	17%	23%	18%	8%
Native Am		0%	0%	0%	0%	6%	0%		0%
Other/Unkwn	17%	9%	6%	8%	25%	17%	17%	21%	13%
White	31%	43%	33%	19%	31%	25%	40%	9%	46%
Total	100%	100%	100%	100%	100%	100%	100%	100%	100%

Berkeley City College



Number of Certificates by Age Group

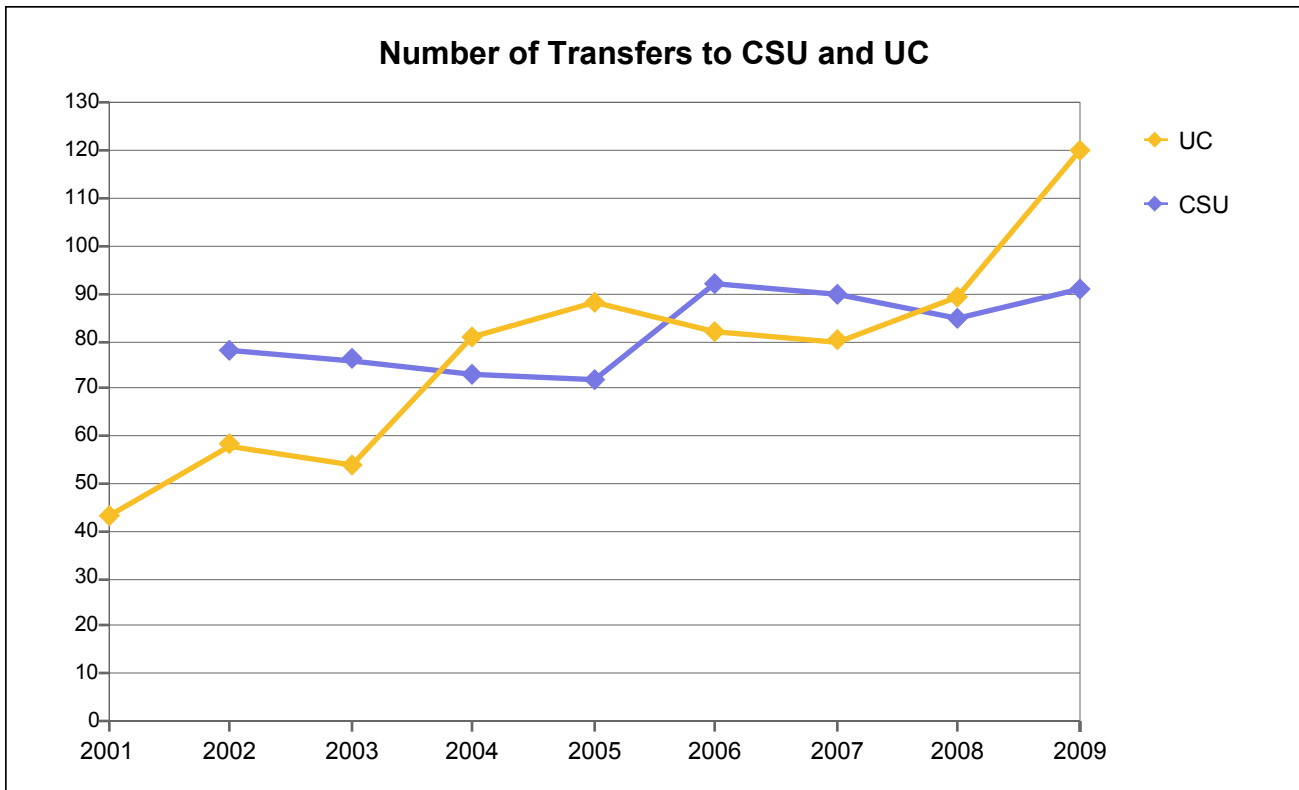
Age Group	01-02	02-03	03-04	04-05	05-06	06-07	07-08	08-09	09-10
15 - 19	0	1	3	0	0	1	1	2	0
20 - 24	9	19	7	13	11	6	11	7	6
25 - 29	14	13	32	23	8	4	8	6	4
30 - 34	17	8	12	22	11	8	3	2	3
35 - 54	25	43	55	20	21	14	16	13	8
55 and Ove	5	10	4	17	14	3	14	3	3
Unkwn			1	0					
Total	70	94	114	95	65	36	53	33	24

Percentage Distribution of Certificates by Age Group

Age Group	01-02	02-03	03-04	04-05	05-06	06-07	07-08	08-09	09-10
15 - 19	0%	1%	3%	0%	0%	3%	2%	6%	0%
20 - 24	13%	20%	6%	14%	17%	17%	21%	21%	25%
25 - 29	20%	14%	28%	24%	12%	11%	15%	18%	17%
30 - 34	24%	9%	11%	23%	17%	22%	6%	6%	13%
35 - 54	36%	46%	48%	21%	32%	39%	30%	39%	33%
55 and Ove	7%	11%	4%	18%	22%	8%	26%	9%	13%
Unkwn			1%	0%					
Total	100%	100%	100%	100%	100%	100%	100%	100%	100%

Note: Age as of 12/15 of the award year.

Berkeley City College



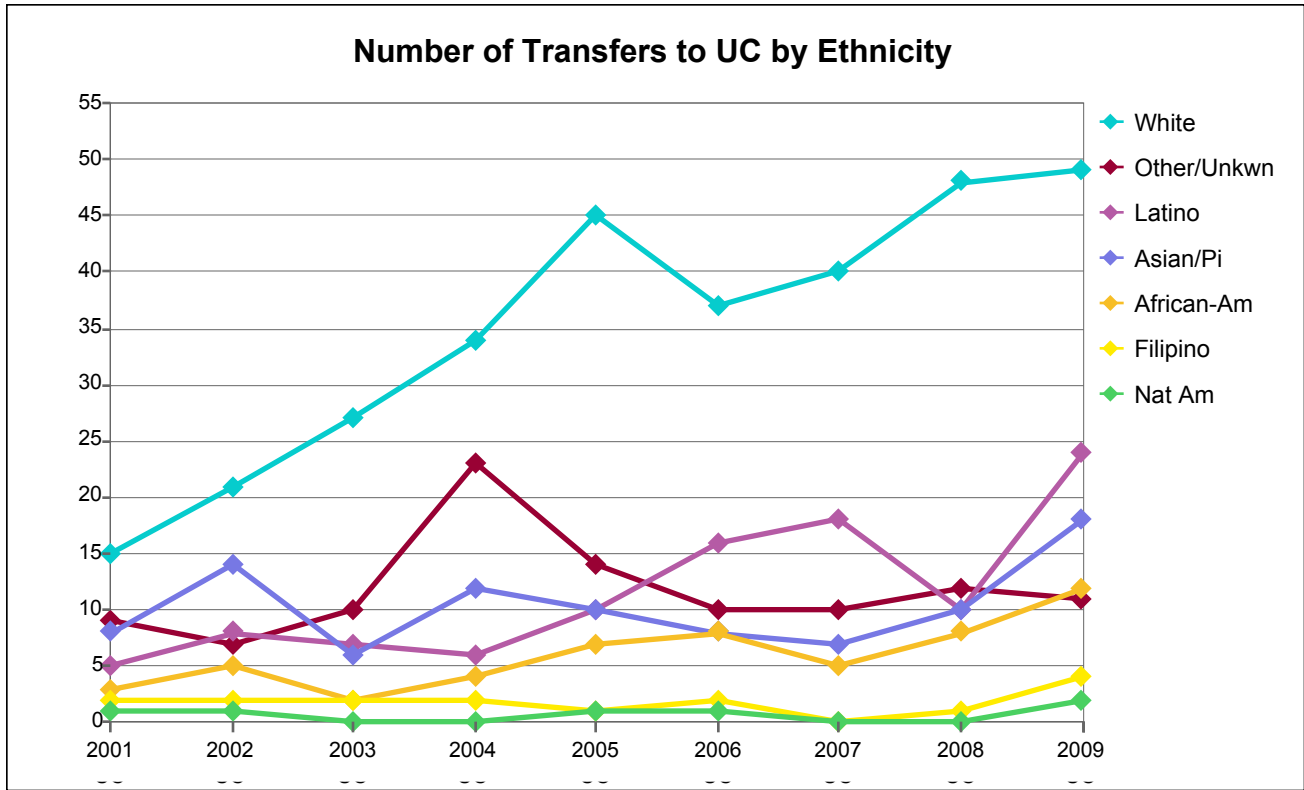
Number of Transfers to CSU and UC

System	2001	2002	2003	2004	2005	2006	2007	2008	2009
CSU		78	76	73	72	92	90	85	91
UC	43	58	54	81	88	82	80	89	120
Total	43	136	130	154	160	174	170	174	211

Percentage Distribution of Transfers to CSU and UC

System	2001	2002	2003	2004	2005	2006	2007	2008	2009
CSU		57%	58%	47%	45%	53%	53%	49%	43%
UC	100%	43%	42%	53%	55%	47%	47%	51%	57%
Total	100%	100%	100%	100%	100%	100%	100%	100%	100%

Berkeley City College



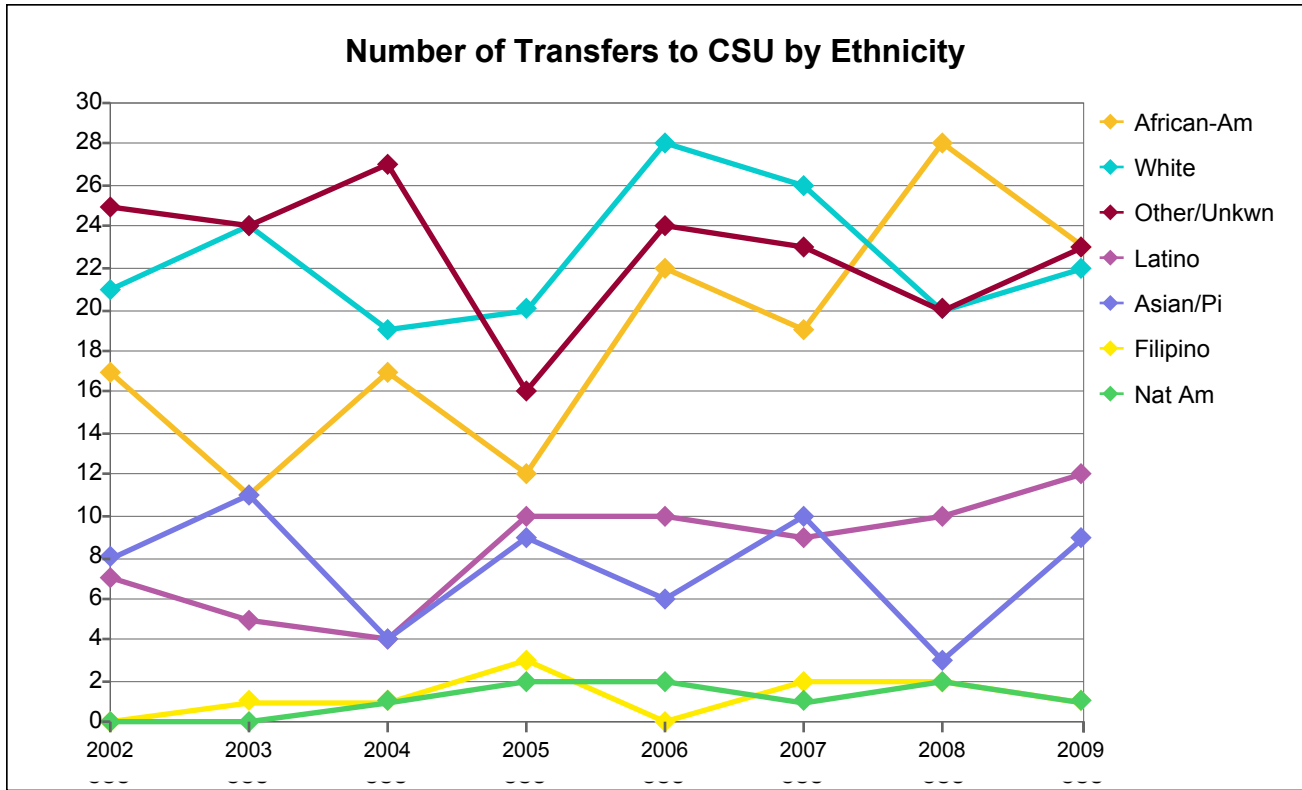
Number of UC Transfers by Ethnicity

Academic Yr Ending	Asian/PI	African-Am	Filipino	Latino	Nat Am	White	Other/Unk	Totals
2001	8	3	2	5	1	15	9	43
2002	14	5	2	8	1	21	7	58
2003	6	2	2	7	0	27	10	54
2004	12	4	2	6	0	34	23	81
2005	10	7	1	10	1	45	14	88
2006	8	8	2	16	1	37	10	82
2007	7	5	0	18	0	40	10	80
2008	10	8	1	10	0	48	12	89
2009	18	12	4	24	2	49	11	120

Percentage Distribution of UC Transfers by Ethnicity

Academic Yr Ending	Asian/PI	African-Am	Filipino	Latino	Nat Am	White	Other/Unk	Total
2001	19%	7%	5%	12%	2%	35%	21%	100%
2002	24%	9%	3%	14%	2%	36%	12%	100%
2003	11%	4%	4%	13%	0%	50%	19%	100%
2004	15%	5%	2%	7%	0%	42%	28%	100%
2005	11%	8%	1%	11%	1%	51%	16%	100%
2006	10%	10%	2%	20%	1%	45%	12%	100%
2007	9%	6%	0%	23%	0%	50%	13%	100%
2008	11%	9%	1%	11%	0%	54%	13%	100%
2009	15%	10%	3%	20%	2%	41%	9%	100%

Berkeley City College



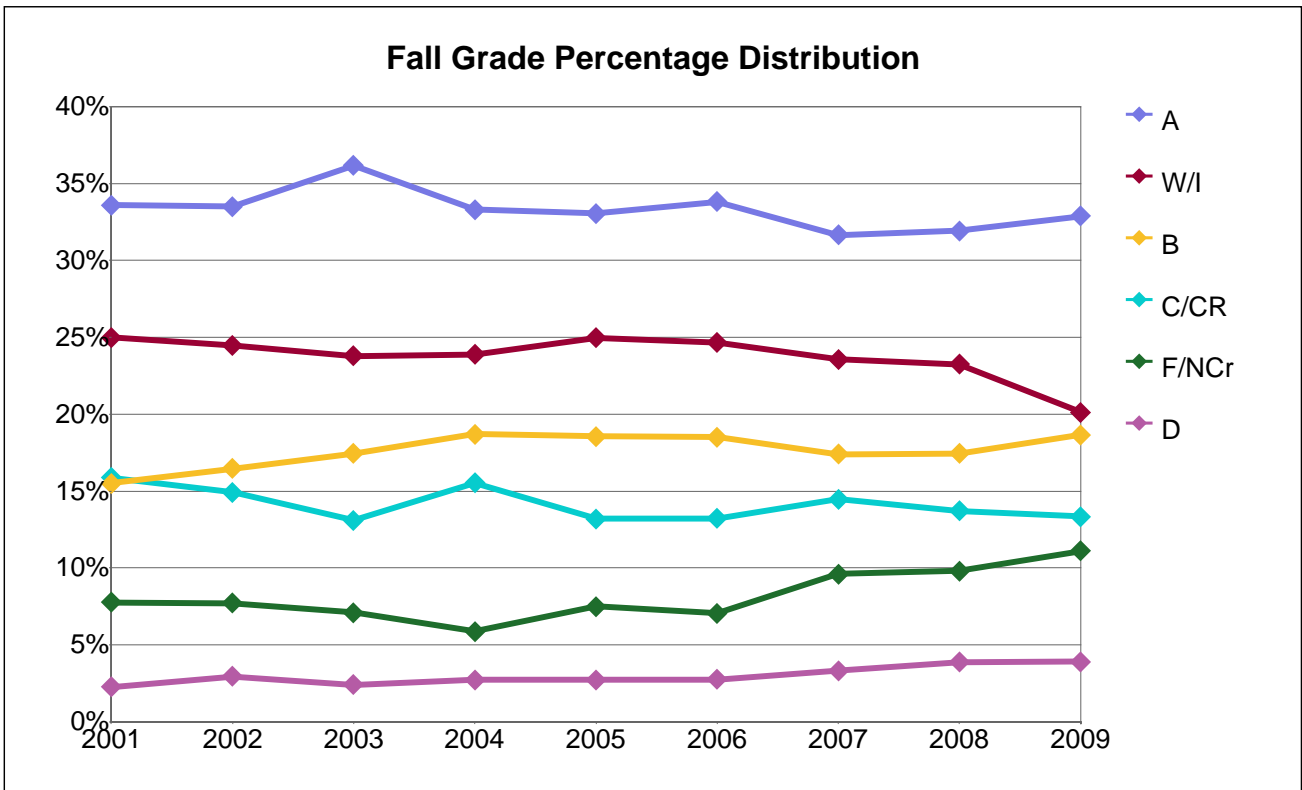
Number of CSU Transfers by Ethnicity

Academic Yr Ending	Asian/PI	African-Am	Filipino	Latino	Nat Am	White	Other/Unk	Totals
2002	8	17	0	7	0	21	25	78
2003	11	11	1	5	0	24	24	76
2004	4	17	1	4	1	19	27	73
2005	9	12	3	10	2	20	16	72
2006	6	22	0	10	2	28	24	92
2007	10	19	2	9	1	26	23	90
2008	3	28	2	10	2	20	20	85
2009	9	23	1	12	1	22	23	91

Percentage Distribution of CSU Transfers by Ethnicity

Academic Yr Ending	Asian/PI	African-Am	Filipino	Latino	Nat Am	White	Other/Unk	Total
2002	10%	22%	0%	9%	0%	27%	32%	100%
2003	14%	14%	1%	7%	0%	32%	32%	100%
2004	5%	23%	1%	5%	1%	26%	37%	100%
2005	13%	17%	4%	14%	3%	28%	22%	100%
2006	7%	24%	0%	11%	2%	30%	26%	100%
2007	11%	21%	2%	10%	1%	29%	26%	100%
2008	4%	33%	2%	12%	2%	24%	24%	100%
2009	10%	25%	1%	13%	1%	24%	25%	100%

Berkeley City College



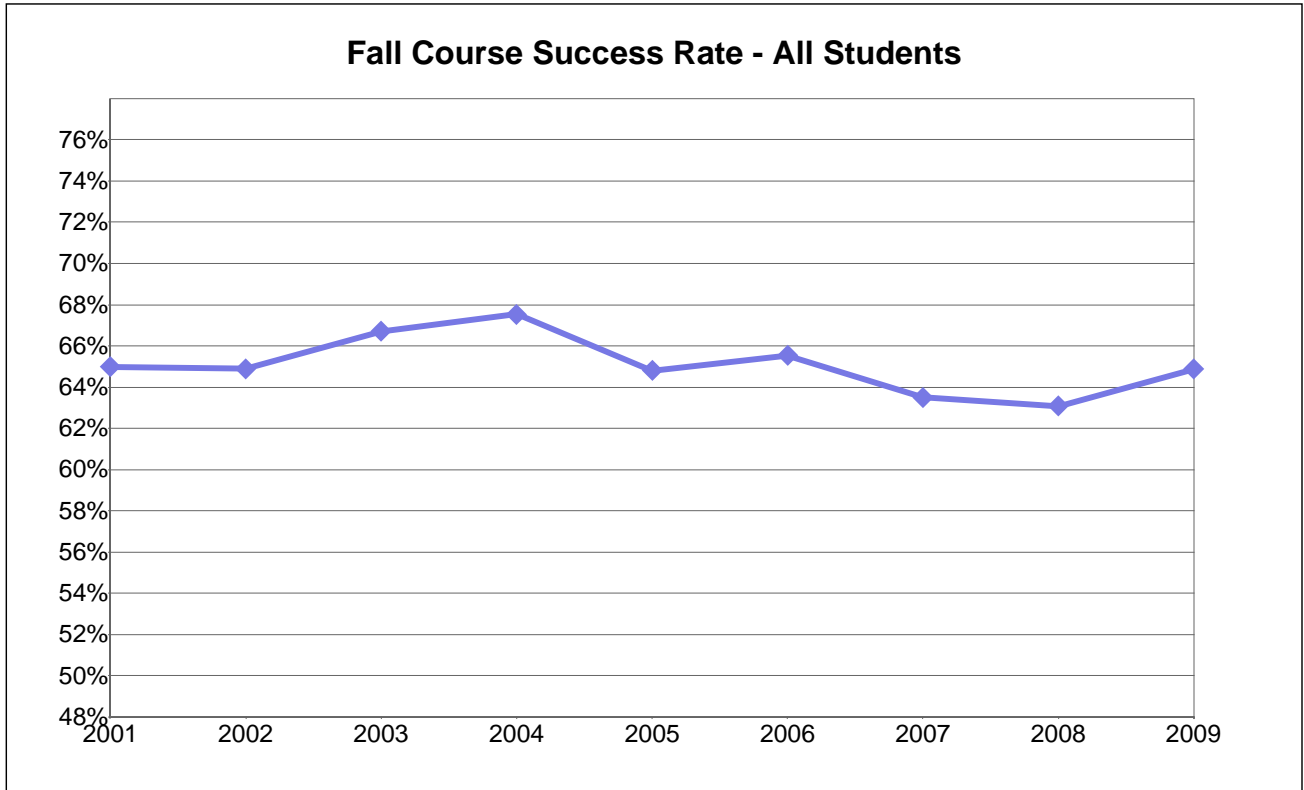
Fall Grade Frequency Distribution

Grade	2001	2002	2003	2004	2005	2006	2007	2008	2009
A	3,016	3,305	3,035	2,855	2,763	3,282	3,723	4,282	4,970
B	1,392	1,625	1,465	1,603	1,551	1,796	2,046	2,340	2,821
C	757	887	712	761	742	911	1,103	1,467	1,581
CR	668	584	387	570	360	371	598	371	435
D	203	290	201	233	227	267	389	521	589
F	452	482	323	313	395	463	814	1,200	1,572
I	92	130	102	75	81	97	118	1	168
NCr	244	278	273	191	232	222	317	113	107
W	2,152	2,283	1,894	1,972	2,006	2,296	2,654	3,115	2,874
Total	8,976	9,864	8,392	8,573	8,357	9,705	11,762	13,410	15,117

Fall Grade Percentage Distribution

Grade	2001	2002	2003	2004	2005	2006	2007	2008	2009
A	34%	34%	36%	33%	33%	34%	32%	32%	33%
B	16%	16%	17%	19%	19%	19%	17%	17%	19%
C	8%	9%	8%	9%	9%	9%	9%	11%	10%
CR	7%	6%	5%	7%	4%	4%	5%	3%	3%
D	2%	3%	2%	3%	3%	3%	3%	4%	4%
F	5%	5%	4%	4%	5%	5%	7%	9%	10%
I	1%	1%	1%	1%	1%	1%	1%	0%	1%
NCr	3%	3%	3%	2%	3%	2%	3%	1%	1%
W	24%	23%	23%	23%	24%	24%	23%	23%	19%
% of Column	100%	100%	100%	100%	100%	100%	100%	100%	100%

Berkeley City College



Number of Fall Total Grades Awarded - All Students

Dimension	2001	2002	2003	2004	2005	2006	2007	2008	2009
All Students	8,976	9,864	8,392	8,573	8,357	9,705	11,762	13,410	15,117

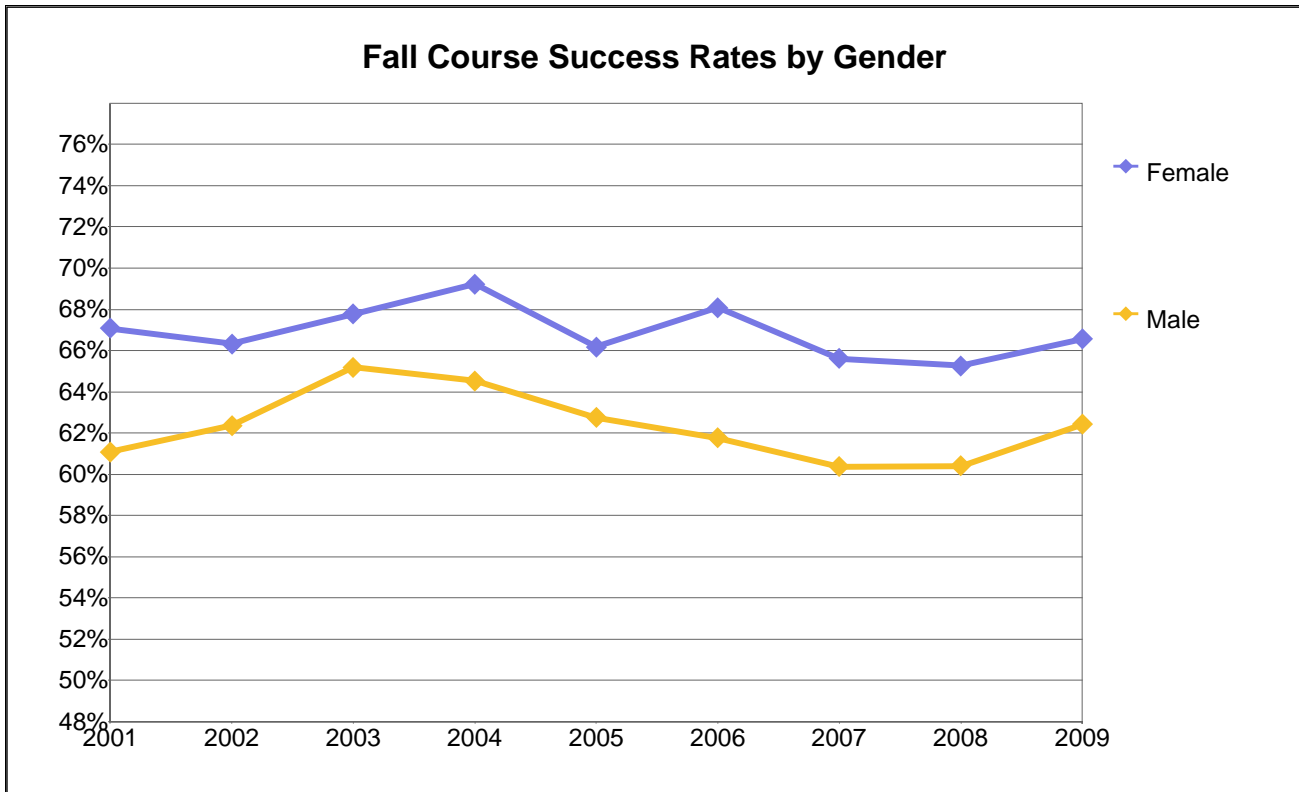
Number of Fall Successful Grades - All Students

Dimension	2001	2002	2003	2004	2005	2006	2007	2008	2009
All Students	5,833	6,401	5,599	5,789	5,416	6,360	7,470	8,460	9,807

Course Success Rates - All Students

Dimension	2001	2002	2003	2004	2005	2006	2007	2008	2009
All Students	65%	65%	67%	68%	65%	66%	64%	63%	65%

Berkeley City College



Number of Fall Total Grades Awarded by Gender

Gender	2001	2002	2003	2004	2005	2006	2007	2008	2009
Female	5,700	6,191	4,919	5,021	4,979	5,756	6,881	7,423	8,189
Male	3,130	3,515	3,215	3,242	3,229	3,857	4,837	5,546	6,273
Unkwn	146	158	258	310	149	92	44	441	655
Total	8,976	9,864	8,392	8,573	8,357	9,705	11,762	13,410	15,117

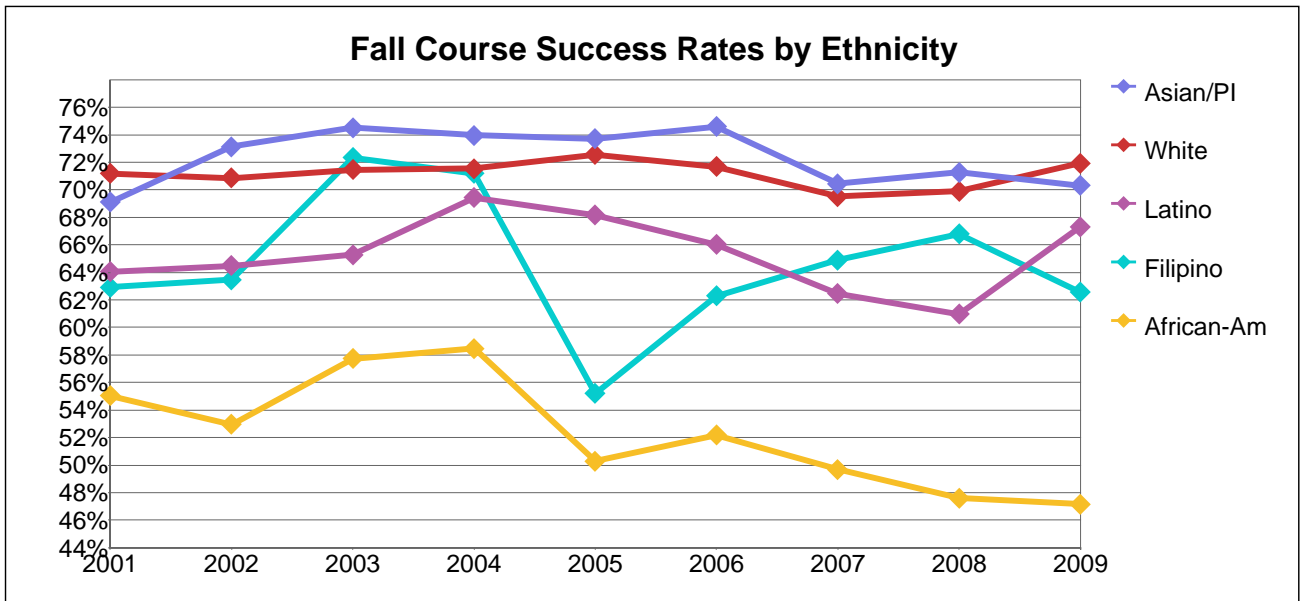
Number of Fall Successful Grades by Gender

Gender	2001	2002	2003	2004	2005	2006	2007	2008	2009
Female	3,823	4,106	3,334	3,476	3,295	3,919	4,515	4,844	5,451
Male	1,912	2,192	2,096	2,092	2,026	2,382	2,920	3,350	3,915
Unkwn	98	103	169	221	95	59	35	266	441
Total	5,833	6,401	5,599	5,789	5,416	6,360	7,470	8,460	9,807

Course Success Rates by Gender

Gender	2001	2002	2003	2004	2005	2006	2007	2008	2009
Female	67%	66%	68%	69%	66%	68%	66%	65%	67%
Male	61%	62%	65%	65%	63%	62%	60%	60%	62%
Unkwn	67%	65%	66%	71%	64%	64%	80%	60%	67%
All Students	65%	65%	67%	68%	65%	66%	64%	63%	65%

Berkeley City College



Number of Fall Total Grades Awarded by Ethnicity

Ethnicity	2001	2002	2003	2004	2005	2006	2007	2008	2009
African-Am	2,175	2,682	2,229	2,328	2,339	2,532	2,687	2,851	2,572
Asian/PI	1,437	1,407	1,181	1,148	1,141	1,425	1,857	2,356	2,153
Filipino	151	208	170	125	163	122	228	277	219
Latino	1,115	1,239	1,011	1,191	1,071	1,216	1,649	1,935	1,774
Native Am	94	91	60	62	75	90	71	101	69
Other/Unkwn	991	1,128	996	1,202	1,177	1,354	1,603	2,221	5,294
White	3,013	3,109	2,745	2,517	2,391	2,966	3,667	3,669	3,036
Total	8,976	9,864	8,392	8,573	8,357	9,705	11,762	13,410	15,117

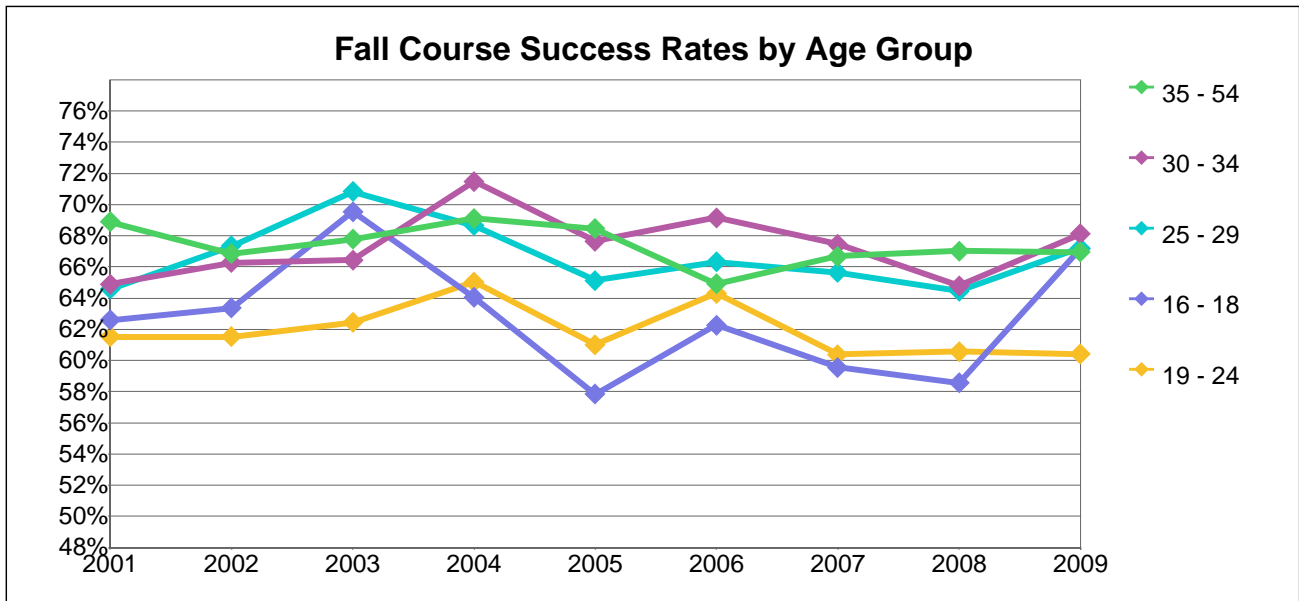
Number of Fall Successful Grades by Ethnicity

Ethnicity	2001	2002	2003	2004	2005	2006	2007	2008	2009
African-Am	1,197	1,420	1,287	1,361	1,176	1,321	1,335	1,357	1,213
Asian/PI	993	1,029	880	849	841	1,063	1,308	1,679	1,514
Filipino	95	132	123	89	90	76	148	185	137
Latino	714	799	660	827	730	803	1,030	1,180	1,194
Native Am	52	72	29	45	48	47	35	61	37
Other/Unkwn	637	746	658	817	796	924	1,065	1,433	3,528
White	2,145	2,203	1,962	1,801	1,735	2,126	2,549	2,565	2,184
Total	5,833	6,401	5,599	5,789	5,416	6,360	7,470	8,460	9,807

Course Success Rates by Ethnicity

Ethnicity	2001	2002	2003	2004	2005	2006	2007	2008	2009
African-Am	55%	53%	58%	58%	50%	52%	50%	48%	47%
Asian/PI	69%	73%	75%	74%	74%	75%	70%	71%	70%
Filipino	63%	63%	72%	71%	55%	62%	65%	67%	63%
Latino	64%	64%	65%	69%	68%	66%	62%	61%	67%
Native Am	55%	79%	48%	73%	64%	52%	49%	60%	54%
Other/Unkwn	64%	66%	66%	68%	68%	68%	66%	65%	67%
White	71%	71%	71%	72%	73%	72%	70%	70%	72%
All Students	65%	65%	67%	68%	65%	66%	64%	63%	65%

Berkeley City College



Number of Fall Total Grades Awarded by Age Group

Age Group	2001	2002	2003	2004	2005	2006	2007	2008	2009
Under 16	36	59	31	26	25	58	131	102	147
16 - 18	655	748	640	634	669	859	1,325	1,771	2,166
19 - 24	2,948	3,230	2,870	3,038	3,037	3,365	4,407	5,332	6,252
25 - 29	1,409	1,724	1,371	1,432	1,305	1,455	1,682	1,953	2,102
30 - 34	971	1,067	861	824	807	898	974	1,020	1,113
35 - 54	2,405	2,374	1,995	1,962	1,867	2,197	2,429	2,455	2,490
55 and Over	552	662	624	657	647	873	814	777	847
Total	8,976	9,864	8,392	8,573	8,357	9,705	11,762	13,410	15,117

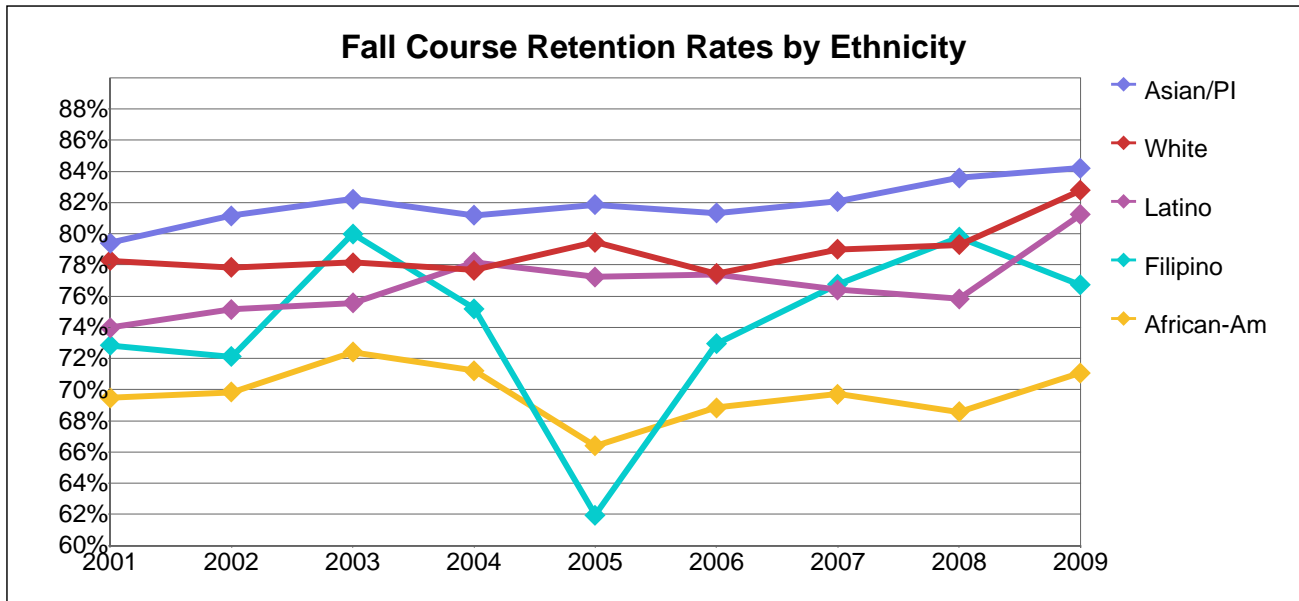
Number of Fall Successful Grades by Age Group

Age Group	2001	2002	2003	2004	2005	2006	2007	2008	2009
Under 16	26	40	25	18	17	38	89	71	130
16 - 18	410	474	445	406	387	535	789	1,037	1,455
19 - 24	1,814	1,987	1,792	1,976	1,853	2,164	2,661	3,230	3,777
25 - 29	910	1,161	971	983	850	965	1,104	1,259	1,413
30 - 34	630	707	572	589	546	621	657	661	758
35 - 54	1,657	1,587	1,352	1,356	1,278	1,426	1,620	1,645	1,667
55 and Over	386	445	442	461	485	611	550	557	607
Total	5,833	6,401	5,599	5,789	5,416	6,360	7,470	8,460	9,807

Course Success Rates by Age Group

Age Group	2001	2002	2003	2004	2005	2006	2007	2008	2009
Under 16	72%	68%	81%	69%	68%	66%	68%	70%	88%
16 - 18	63%	63%	70%	64%	58%	62%	60%	59%	67%
19 - 24	62%	62%	62%	65%	61%	64%	60%	61%	60%
25 - 29	65%	67%	71%	69%	65%	66%	66%	64%	67%
30 - 34	65%	66%	66%	71%	68%	69%	67%	65%	68%
35 - 54	69%	67%	68%	69%	68%	65%	67%	67%	67%
55 and Over	70%	67%	71%	70%	75%	70%	68%	72%	72%
All Students	65%	65%	67%	68%	65%	66%	64%	63%	65%

Berkeley City College



Number of Fall Total Grades Awarded by Ethnicity

Ethnicity	2001	2002	2003	2004	2005	2006	2007	2008	2009
African-Am	2,175	2,682	2,229	2,328	2,339	2,532	2,687	2,851	2,572
Asian/PI	1,437	1,407	1,181	1,148	1,141	1,425	1,857	2,356	2,153
Filipino	151	208	170	125	163	122	228	277	219
Latino	1,115	1,239	1,011	1,191	1,071	1,216	1,649	1,935	1,774
Native Am	94	91	60	62	75	90	71	101	69
Other/Unkwn	991	1,128	996	1,202	1,177	1,354	1,603	2,221	5,294
White	3,013	3,109	2,745	2,517	2,391	2,966	3,667	3,669	3,036
Total	8,976	9,864	8,392	8,573	8,357	9,705	11,762	13,410	15,117

Number of Fall Completion Grades by Ethnicity

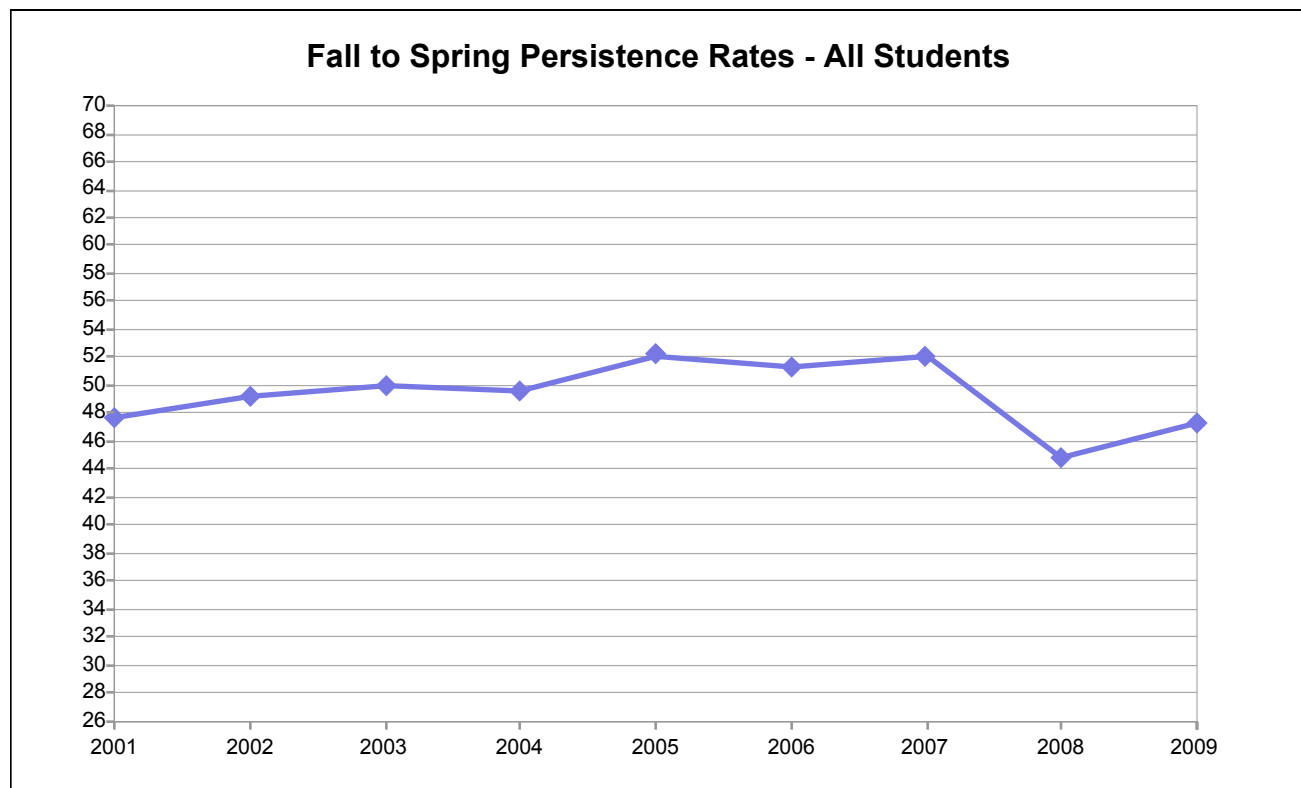
Ethnicity	2001	2002	2003	2004	2005	2006	2007	2008	2009
African-Am	1,511	1,873	1,614	1,658	1,553	1,743	1,873	1,955	1,828
Asian/PI	1,141	1,142	971	932	934	1,159	1,524	1,969	1,813
Filipino	110	150	136	94	101	89	175	221	168
Latino	825	931	764	931	827	941	1,260	1,467	1,441
Native Am	61	77	38	49	54	50	44	73	49
Other/Unkwn	726	858	728	907	901	1,033	1,217	1,700	4,263
White	2,358	2,420	2,145	1,955	1,900	2,297	2,897	2,909	2,513
Total	6,732	7,451	6,396	6,526	6,270	7,312	8,990	10,294	12,075

Course Retention Rates by Ethnicity

Ethnicity	2001	2002	2003	2004	2005	2006	2007	2008	2009
African-Am	69%	70%	72%	71%	66%	69%	70%	69%	71%
Asian/PI	79%	81%	82%	81%	82%	81%	82%	84%	84%
Filipino	73%	72%	80%	75%	62%	73%	77%	80%	77%
Latino	74%	75%	76%	78%	77%	77%	76%	76%	81%
Native Am	65%	85%	63%	79%	72%	56%	62%	72%	71%
Other/Unkwn	73%	76%	73%	75%	77%	76%	76%	77%	81%
White	78%	78%	78%	78%	79%	77%	79%	79%	83%
All Students	75%	76%	76%	76%	75%	75%	76%	77%	80%

Retention is defined as the number of grades of A, B, C, CR, D, NC, or F divided by the total number of official grades including official W's.

Berkeley City College



Number Enrolled at Fall Census - All Students

Dimension	2001	2002	2003	2004	2005	2006	2007	2008	2009
All Students	4,228	4,473	4,050	4,007	3,848	4,562	5,420	6,241	7,284

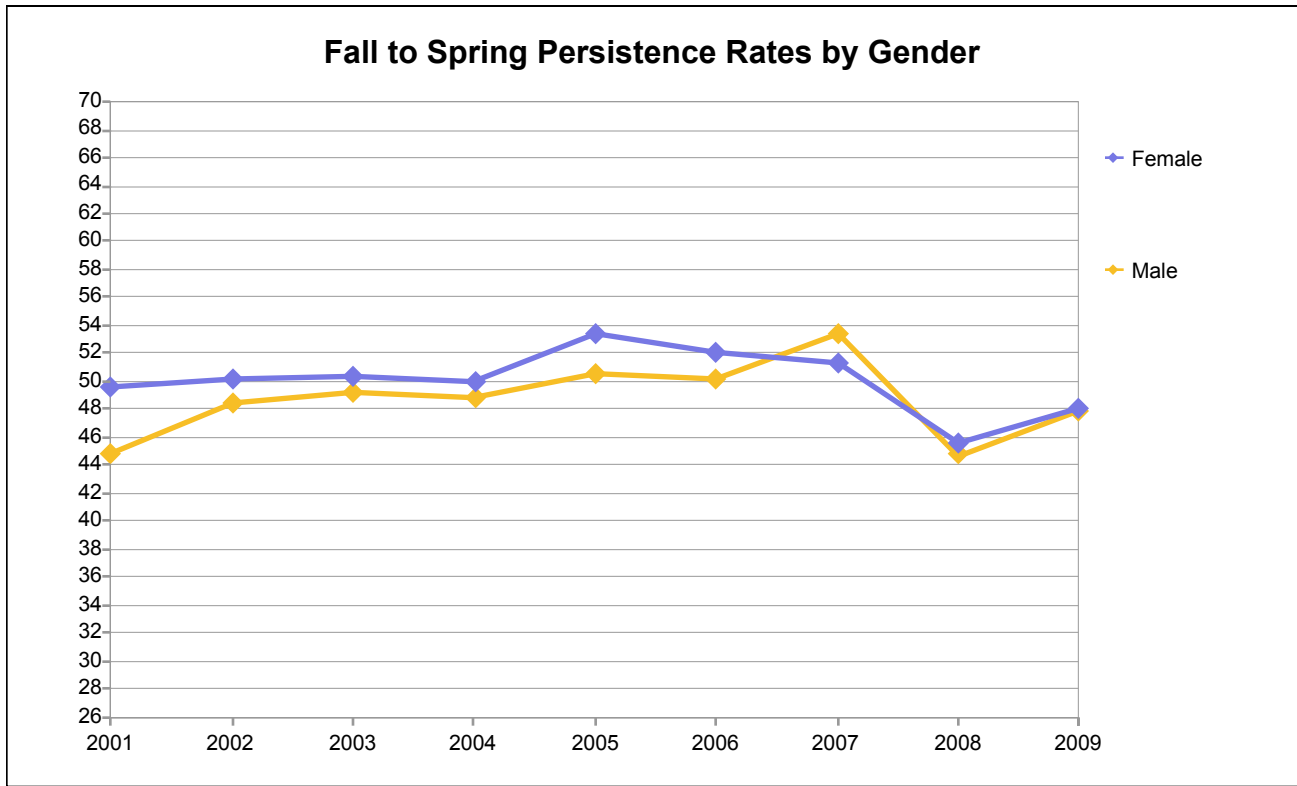
Number of Fall Persisting to Spring Opening Day - All Students

Dimension	2001	2002	2003	2004	2005	2006	2007	2008	2009
All Students	2,018	2,204	2,025	1,984	2,008	2,345	2,826	2,800	3,454

Fall to Spring Persistence Rates - All Students

Dimension	2001	2002	2003	2004	2005	2006	2007	2008	2009
All Students	48	49	50	50	52	51	52	45	47

Berkeley City College



Number Enrolled at Fall Census by Gender

Gender	2001	2002	2003	2004	2005	2006	2007	2008	2009
Female	2,661	2,784	2,430	2,366	2,329	2,740	3,266	3,489	3,904
Male	1,485	1,587	1,496	1,502	1,448	1,774	2,124	2,426	2,863
Unkwn	82	102	124	139	71	48	30	326	517
Total	4,228	4,473	4,050	4,007	3,848	4,562	5,420	6,241	7,284

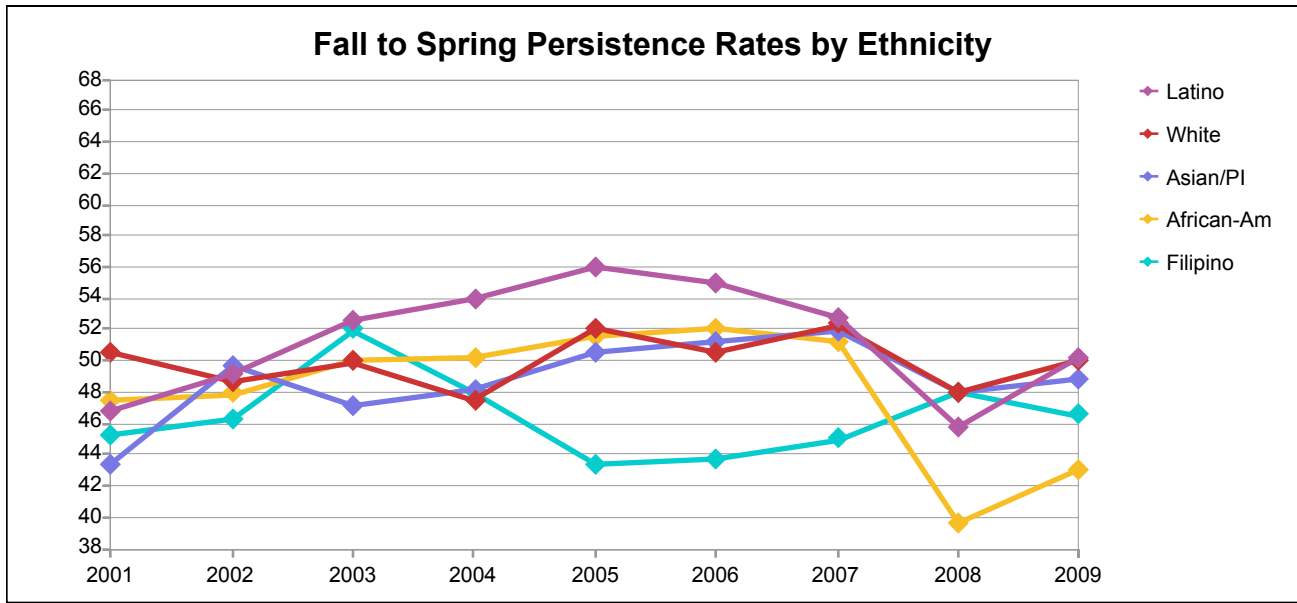
Number of Fall Persisting to Spring Opening Day by Gender

Gender	2001	2002	2003	2004	2005	2006	2007	2008	2009
Female	1,319	1,396	1,225	1,183	1,244	1,425	1,676	1,594	1,877
Male	667	768	736	734	733	889	1,134	1,085	1,370
Unkwn	32	40	64	67	31	31	16	121	207
Total	2,018	2,204	2,025	1,984	2,008	2,345	2,826	2,800	3,454

Fall to Spring Persistence Rates by Gender

Gender	2001	2002	2003	2004	2005	2006	2007	2008	2009
Female	50	50	50	50	53	52	51	46	48
Male	45	48	49	49	51	50	53	45	48
Unkwn	39	39	52	48	44	65	53	37	40
Total	48	49	50	50	52	51	52	45	47

Berkeley City College



Number Enrolled at Fall Census by Ethnicity

Ethnicity	2001	2002	2003	2004	2005	2006	2007	2008	2009
African-Am	900	1,022	915	966	969	1,096	1,166	1,294	1,307
Asian/PI	649	636	624	561	559	685	864	1,032	1,093
Filipino	73	93	77	73	83	71	109	127	114
Latino	504	561	455	529	498	553	756	880	767
Native Am	37	31	28	29	29	37	37	91	35
Other/Unkwn	603	627	579	581	548	649	748	942	2,423
White	1,462	1,503	1,372	1,268	1,162	1,471	1,740	1,875	1,545
Total	4,228	4,473	4,050	4,007	3,848	4,562	5,420	6,241	7,284

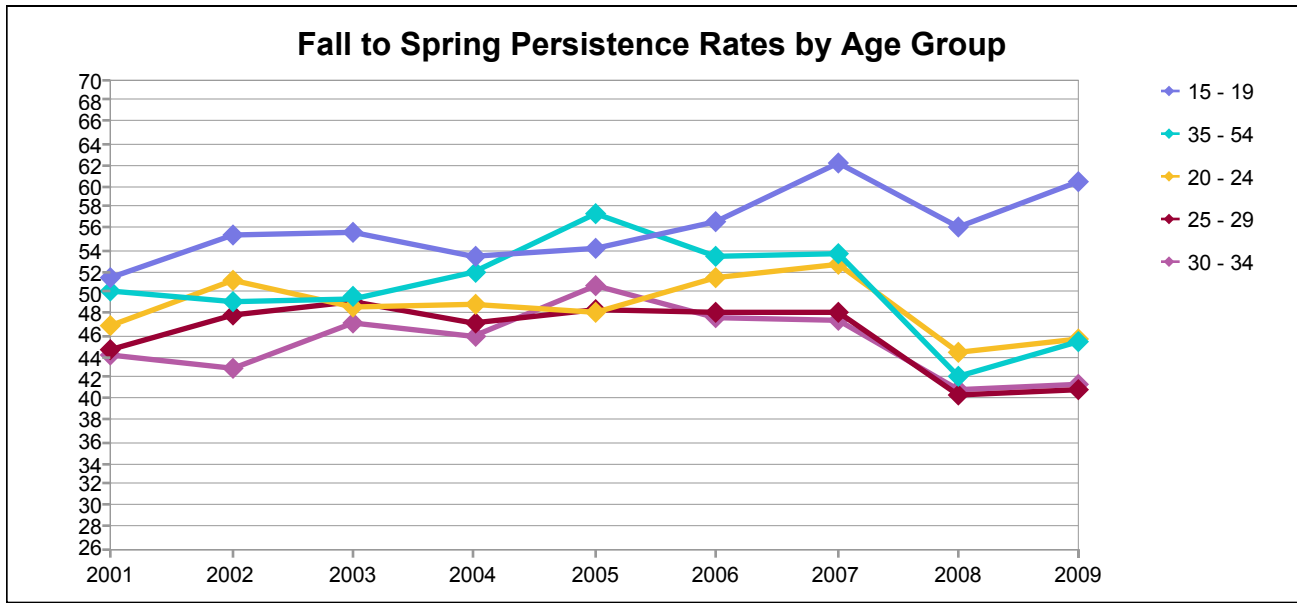
Number of Fall Persisting to Spring Opening Day by Ethnicity

Ethnicity	2001	2002	2003	2004	2005	2006	2007	2008	2009
African-Am	427	489	458	484	499	571	596	513	562
Asian/PI	281	316	294	270	282	351	448	495	534
Filipino	33	43	40	35	36	31	49	61	53
Latino	236	276	239	285	279	304	399	403	385
Native Am	16	21	15	14	13	22	18	38	15
Other/Unkwn	286	328	294	294	295	324	406	390	1,133
White	739	731	685	602	604	742	910	900	772
Total	2,018	2,204	2,025	1,984	2,008	2,345	2,826	2,800	3,454

Fall to Spring Persistence Rates by Ethnicity

Ethnicity	2001	2002	2003	2004	2005	2006	2007	2008	2009
African-Am	47.4	47.8	50.1	50.1	51.5	52.1	51.1	39.6	43.0
Asian/PI	43.3	49.7	47.1	48.1	50.4	51.2	51.9	48.0	48.9
Filipino	45.2	46.2	51.9	47.9	43.4	43.7	45.0	48.0	46.5
Latino	46.8	49.2	52.5	53.9	56.0	55.0	52.8	45.8	50.2
Native Am	43.2	67.7	53.6	48.3	44.8	59.5	48.6	41.8	42.9
Other/Unkwn	47.4	52.3	50.8	50.6	53.8	49.9	54.3	41.4	46.8
White	50.5	48.6	49.9	47.5	52.0	50.4	52.3	48.0	50.0
All	47.7	49.3	50.0	49.5	52.2	51.4	52.1	44.9	47.4

Berkeley City College



Number Enrolled at Fall Census by Age Group

Age Group	2001	2002	2003	2004	2005	2006	2007	2008	2009
15 - 19	538	529	517	521	545	657	915	1,185	1,451
20 - 24	1,080	1,142	1,128	1,138	1,097	1,213	1,513	1,813	2,194
25 - 29	714	795	685	704	639	714	859	1,001	1,184
30 - 34	474	538	443	415	384	440	488	549	630
35 - 54	1,138	1,131	987	945	891	1,085	1,144	1,211	1,310
55 and Over	275	318	282	282	286	420	433	465	510
Other/Unkwn	9	20	8	2	6	33	68	17	5
Total	4,228	4,473	4,050	4,007	3,848	4,562	5,420	6,241	7,284

Number of Fall Persisting to Spring Opening Day by Age Group

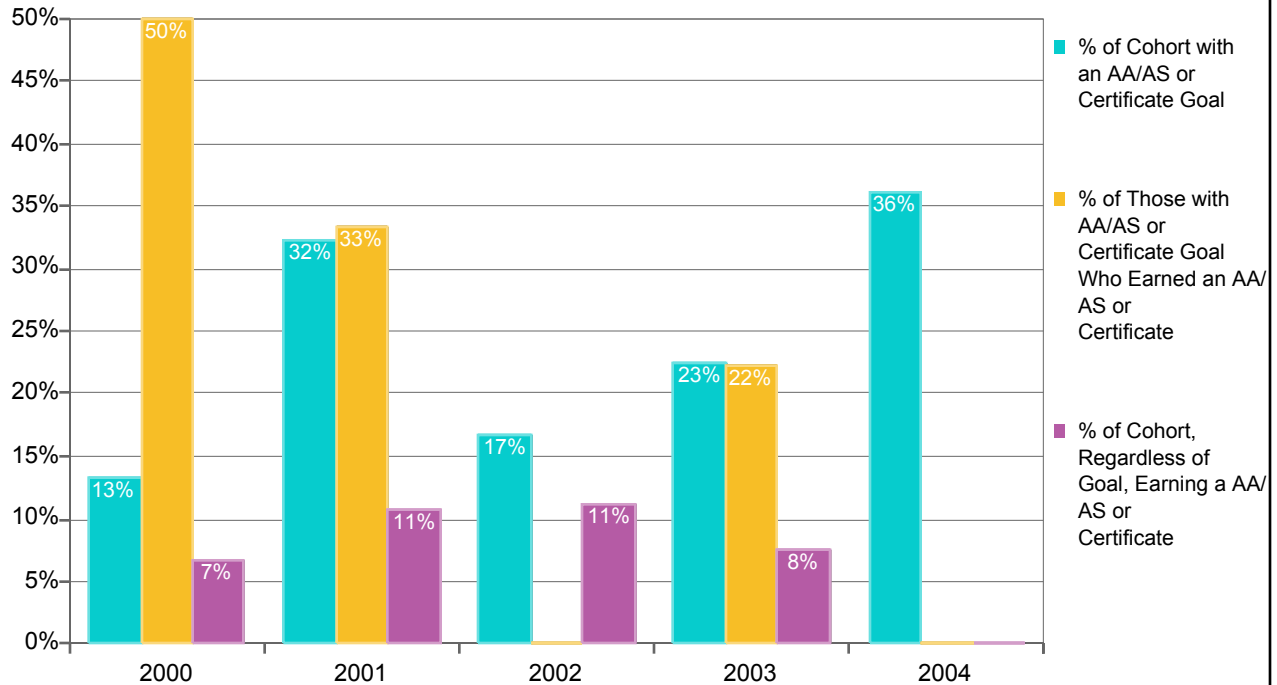
Age Group	2001	2002	2003	2004	2005	2006	2007	2008	2009
15 - 19	277	293	287	278	295	372	568	665	877
20 - 24	507	584	549	555	527	622	796	804	1,003
25 - 29	318	380	336	332	309	343	413	403	483
30 - 34	209	230	209	190	194	209	231	224	260
35 - 54	571	556	488	490	511	580	614	509	594
55 and Over	133	153	152	138	170	200	196	191	236
Other/Unkwn	3	8	4	1	2	19	8	4	1
Total	2,018	2,204	2,025	1,984	2,008	2,345	2,826	2,800	3,454

Fall to Spring Persistence Rates by Age Group

Age Group	2001	2002	2003	2004	2005	2006	2007	2008	2009
15 - 19	51	55	56	53	54	57	62	56	60
20 - 24	47	51	49	49	48	51	53	44	46
25 - 29	45	48	49	47	48	48	48	40	41
30 - 34	44	43	47	46	51	48	47	41	41
35 - 54	50	49	49	52	57	53	54	42	45
55 and Over	48	48	54	49	59	48	45	41	46
Other/Unkwn	33	40	50	50	33	58	12	24	20
Total	48	49	50	50	52	51	52	45	47

Berkeley City College

Percentages of the Fall First-Time College Cohorts with AA/AS or Certificate Goals, Those with Goals Earning an Award, and Those Earning an Award Regardless of Goal within Six Years



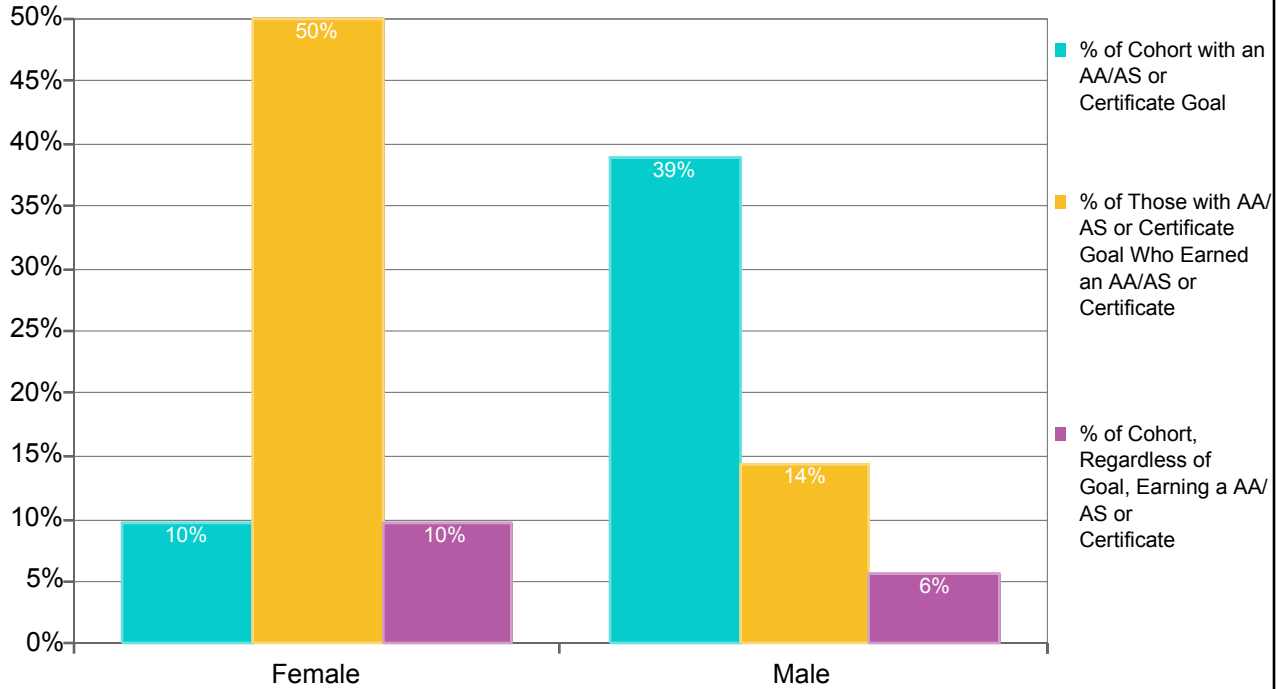
Count and Percentage Tracking of the Fall Matriculated First-Time College Cohorts for AA/AS Degree or Certificate Goals and AA/AS or Certificate Awards within Six Years

Fall First-time College Cohort	Count of Fall Cohort	Count of Cohort with AA/AS or Certificate Goal	Percent of Cohort with AA/AS or Certificate Goal	Count of Cohort with AA/AS or Certificate Goal Who Earned an AA/AS or Certificate	Percent of Those with AA/AS or Certificate Goal Who Earned an AA/AS or Certificate	Count of Cohort, Regardless of Goal, Earning a Degree or Certificate	Percent of Cohort, Regardless of Goal, Earning a Degree or Certificate
2000	15	2	13%	1	50%	1	7%
2001	28	9	32%	3	33%	3	11%
2002	36	6	17%	0	0%	4	11%
2003	40	9	23%	2	22%	3	8%
2004	36	13	36%	0	0%	0	0%
Totals	155	39	25%	6	15%	11	7%

Note: The cohort consists of Fall students enrolled at census with an Enrollment Status of "First-Time College" and with a Matriculation Status of "Matriculated." The student's goal is the Informed or Matriculation Goal with values of 1, 3, 4, or 5, i.e., the goals of Transfer with an AA/AS, AA/AS General Education, AA/AS Vocational, or Certificate. Students are individually tracked to determine the number of the cohort, the number of those with the indicated goals who earn an AA/AS degree or Certificate at any Peralta CCD college, and the number who, regardless of goal, earn an AA/AS degree or Certificate at any Peralta CCD college within the indicated number of years.

Berkeley City College

Percentages of the Fall 2003 First-Time College Cohort with AA/AS or Certificate Goals, Those with Goals Earning an Award, and Those Earning an Award Regardless of Goal within Six Years by Gender

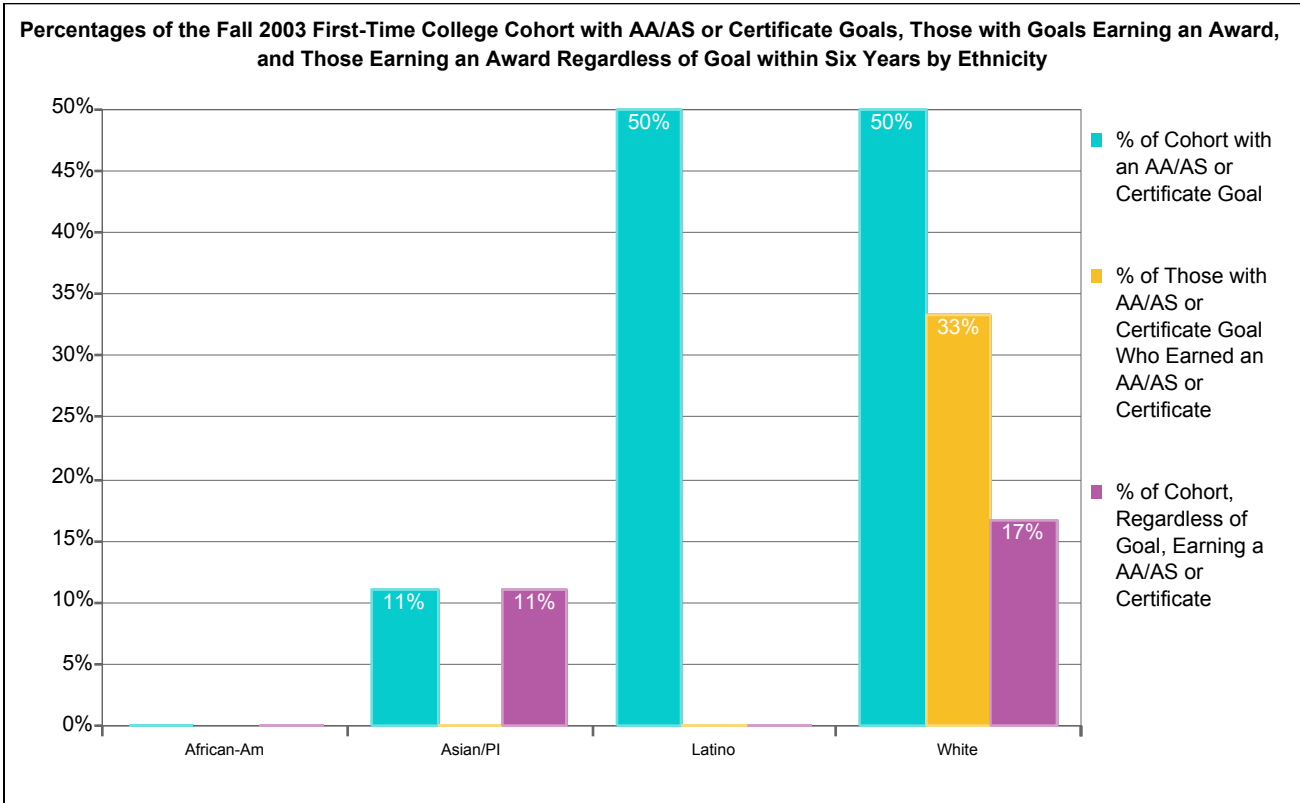


Count and Percentage Tracking of the Fall 2003 Matriculated First-Time College Cohort for AA/AS Degree or Certificate Goals and AA/AS or Certificate Awards within Six Years by Gender

Gender	Count of Fall Cohort	Count of Cohort with AA/AS or Certificate Goal	Percent of Cohort with AA/AS or Certificate Goal	Count of Cohort with AA/AS or Certificate Goal Who Earned an AA/AS or Certificate	Percent of Those with AA/AS or Certificate Goal Who Earned an AA/AS or Certificate	Count of Cohort, Regardless of Goal, Earning a Degree or Certificate	Percent of Cohort, Regardless of Goal, Earning a Degree or Certificate
Female	21	2	10%	1	50%	2	10%
Male	18	7	39%	1	14%	1	6%
Unkwn	1	0	0%	0	#NAN	0	0%
Totals	40	9	23%	2	22%	3	8%

Note: The cohort consists of Fall students enrolled at census with an Enrollment Status of "First-Time College" and with a Matriculation Status of "Matriculated." The student's goal is the Informed or Matriculation Goal with values of 1, 3, 4, or 5, i.e., the goals of Transfer with an AA/AS, AA/AS General Education, AA/AS Vocational, or Certificate. Students are individually tracked to determine the number of the cohort, the number of those with the indicated goals who earn an AA/AS degree or Certificate at any Peralta CCD college, and the number who, regardless of goal, earn an AA/AS degree or Certificate at any Peralta CCD college within the indicated number of years.

Berkeley City College

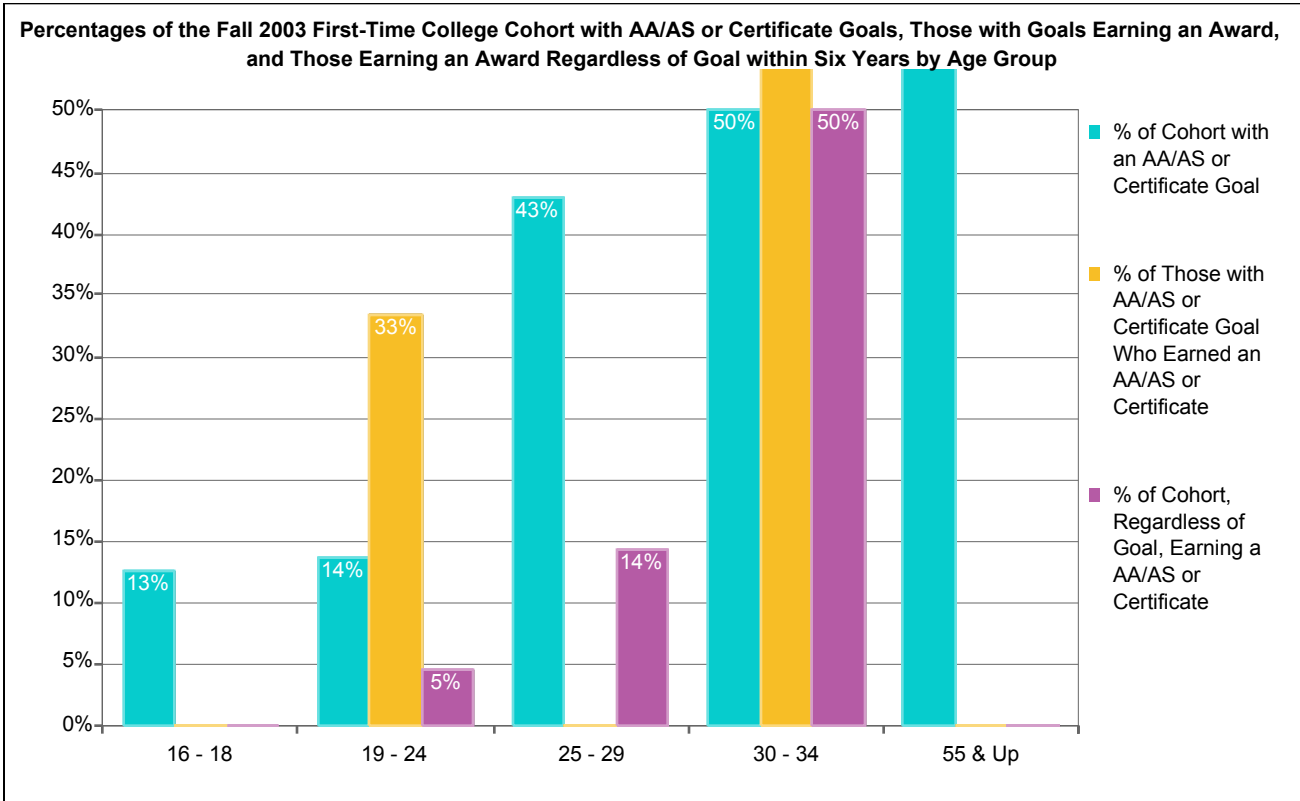


Count and Percentage Tracking of the Fall 2003 Matriculated First-Time College Cohort for AA/AS Degree or Certificate Goals and AA/AS or Certificate Awards within Six Years by Ethnicity

Ethnicity	Count of Fall Cohort	Count of Cohort with AA/AS or Certificate Goal	Percent of Cohort with AA/AS or Certificate Goal	Count of Cohort with AA/AS or Certificate Goal Who Earned an AA/AS or Certificate	Percent of Those with AA/AS or Certificate Goal Who Earned an AA/AS or Certificate	Count of Cohort, Regardless of Goal, Earning a Degree or Certificate	Percent of Cohort, Regardless of Goal, Earning a Degree or Certificate
African-Am	8	0	0%	0	0%	0	0%
Asian/PI	9	1	11%	0	0%	1	11%
Latino	4	2	50%	0	0%	0	0%
Other/Unkw	7	0	0%	0	0%	0	0%
White	12	6	50%	2	33%	2	17%
Totals	40	9	23%	2	22%	3	8%

Note: The cohort consists of Fall students enrolled at census with an Enrollment Status of "First-Time College" and with a Matriculation Status of "Matriculated." The student's goal is the Informed or Matriculation Goal with values of 1, 3, 4, or 5, i.e., the goals of Transfer with an AA/AS, AA/AS General Education, AA/AS Vocational, or Certificate. Students are individually tracked to determine the number of the cohort, the number of those with the indicated goals who earn an AA/AS degree or Certificate at any Peralta CCD college, and the number who, regardless of goal, earn an AA/AS degree or Certificate at any Peralta CCD college within the indicated number of years.

Berkeley City College



Count and Percentage Tracking of the Fall 2003 Matriculated First-Time College Cohort for AA/AS Degree or Certificate Goals and AA/AS or Certificate Awards within Six Years by Age Group

Age Group	Count of Fall Cohort	Count of Cohort with AA/AS or Certificate Goal	Percent of Cohort with AA/AS or Certificate Goal	Count of Cohort with AA/AS or Certificate Goal Who Earned an AA/AS or Certificate	Percent of Those with AA/AS or Certificate Goal Who Earned an AA/AS or Certificate	Count of Cohort, Regardless of Goal, Earning a Degree or Certificate	Percent of Cohort, Regardless of Goal, Earning a Degree or Certificate
16 - 18	8	1	13%	0	0%	0	0%
19 - 24	22	3	14%	1	33%	1	5%
25 - 29	7	3	43%	0	0%	1	14%
30 - 34	2	1	50%	1	100%	1	50%
55 & Up	1	1	100%	0	0%	0	0%
Totals	40	9	23%	2	22%	3	8%

Note: The cohort consists of Fall students enrolled at census with an Enrollment Status of "First-Time College" and with a Matriculation Status of "Matriculated." The student's goal is the Informed or Matriculation Goal with values of 1, 3, 4, or 5, i.e., the goals of Transfer with an AA/AS, AA/AS General Education, AA/AS Vocational, or Certificate. Students are individually tracked to determine the number of the cohort, the number of those with the indicated goals who earn an AA/AS degree or Certificate at any Peralta CCD college, and the number who, regardless of goal, earn an AA/AS degree or Certificate at any Peralta CCD college within the indicated number of years.