



Peralta Facts

Student Outcomes

Laney College

March 2010

Peralta Community College District
Office of Institutional Research

Peralta Facts Student Outcomes

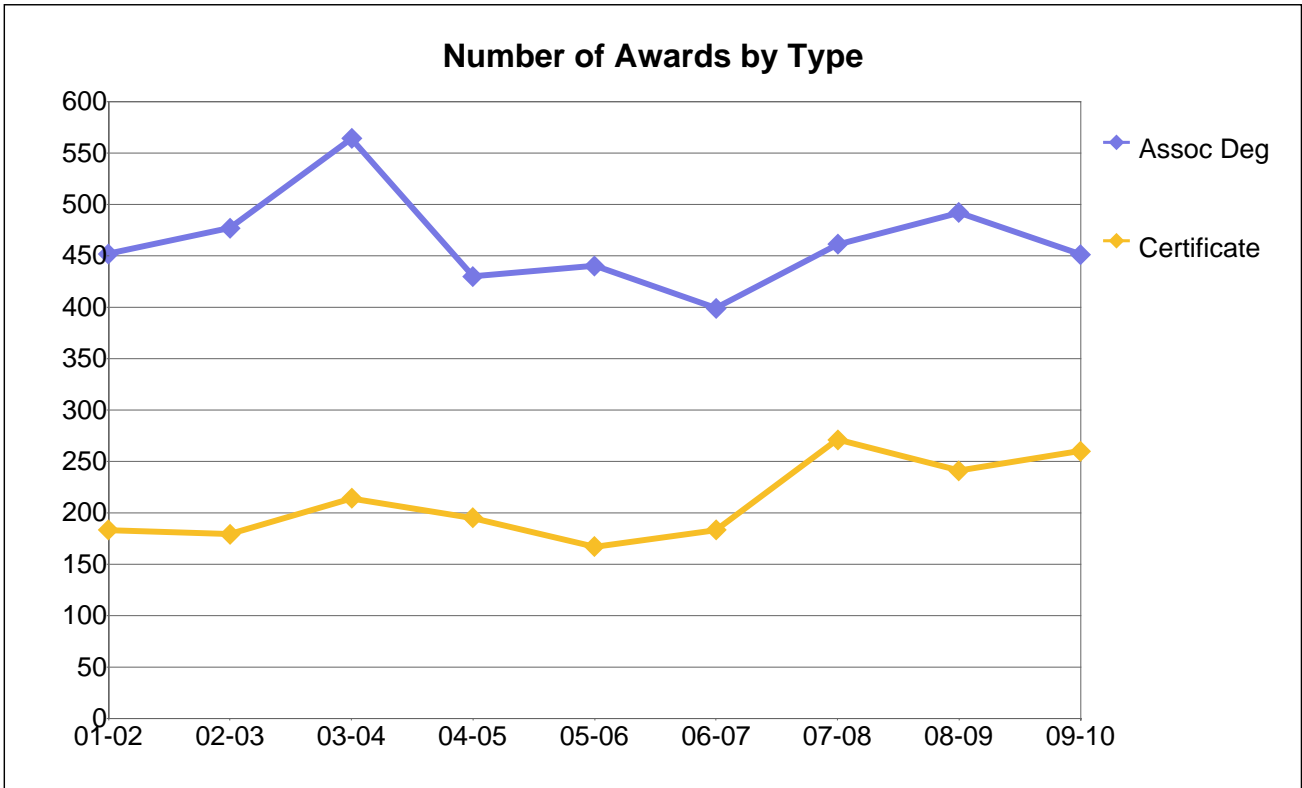
Peralta Community College District

Table of Contents

Number of Awards by Type (Degrees and Certificates).....	1
Number of Associate Degrees by Gender.....	2
Number of Associate Degrees by Ethnicity.....	3
Number of Associate Degrees by Age Group.....	4
Number of Certificates by Gender.....	5
Number of Certificates by Ethnicity.....	6
Number of Certificates by Age Group.....	7
Number of Transfers to CSU and UC by Year.....	8
Number of Transfers to UC by Ethnicity.....	9
Number of Transfer to CSU by Ethnicity.....	10
Fall Grade Frequency and Percentage Distribution by Year.....	11
Fall Course Success Rate by All Students.....	12
Fall Course Success Rate by Gender.....	13
Fall Course Success Rates by Ethnicity.....	14
Fall Course Success Rates by Age Group.....	15
Fall Course Retention Rates by Ethnicity.....	16
Fall to Spring Persistence Counts and Rates by All Students.....	17
Fall to Spring Persistence Counts and Rates by Gender.....	18
Fall to Spring Persistence Counts and Rates by Ethnicity.....	19
Fall to Spring Persistence Counts and Rates by Age Group.....	20
Tracking of Fall First-time Cohorts by Goal and Completion.....	21

Tracking of Fall 2003 First-time Cohorts by Goal and Completion by Gender	22
Tracking of Fall 2003 First-time Cohorts by Goal and Completion by Ethnicity.....	23
Tracking of Fall 2003 First-time Cohorts by Goal and Completion by Age Group	24

Laney College



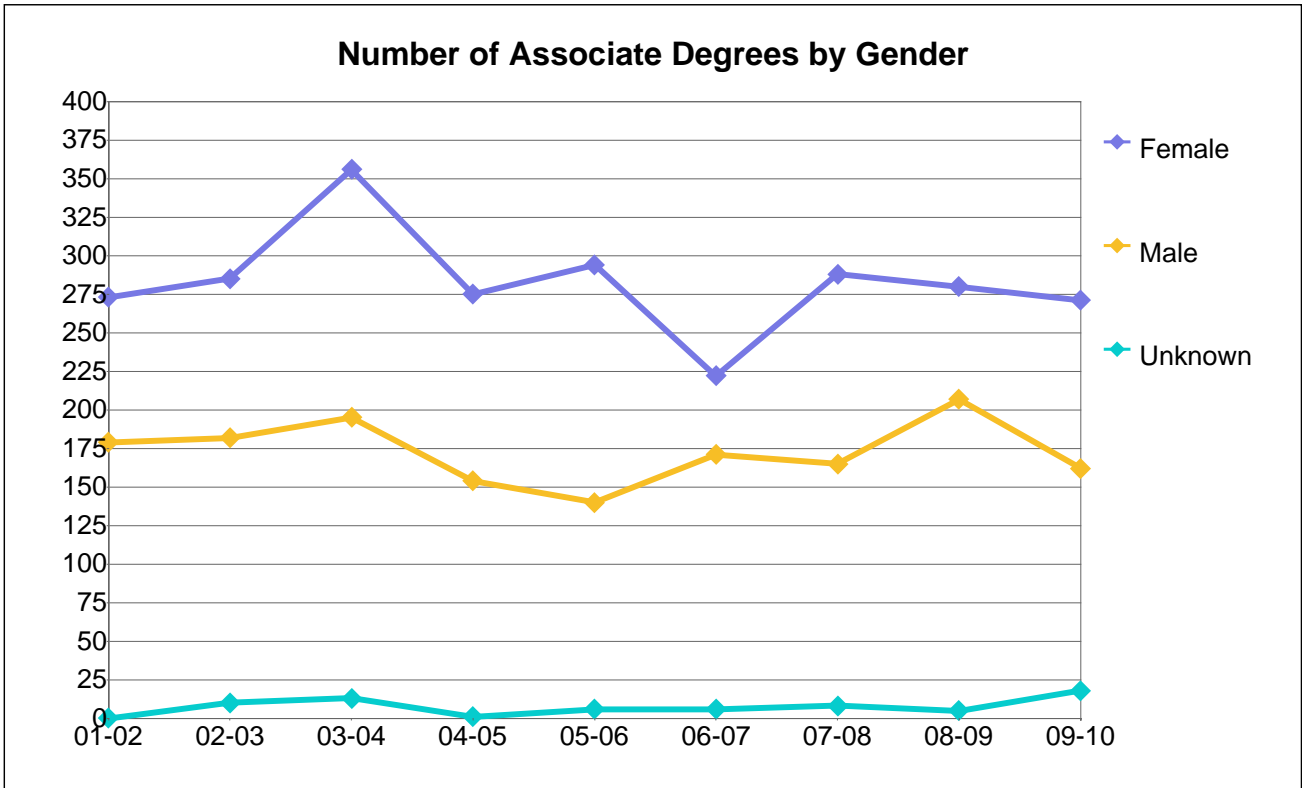
Number of Awards by Type

Deg or Cert	01-02	02-03	03-04	04-05	05-06	06-07	07-08	08-09	09-10
Assoc Deg	452	477	564	430	440	399	461	492	451
Certificate	183	179	214	195	167	183	271	241	260
Total	635	656	778	625	607	582	732	733	711

Percentage Distribution of Awards by Type

Deg or Cert	01-02	02-03	03-04	04-05	05-06	06-07	07-08	08-09	09-10
Assoc Deg	71%	73%	72%	69%	72%	69%	63%	67%	63%
Certificate	29%	27%	28%	31%	28%	31%	37%	33%	37%
Total	100%	100%	100%	100%	100%	100%	100%	100%	100%

Laney College



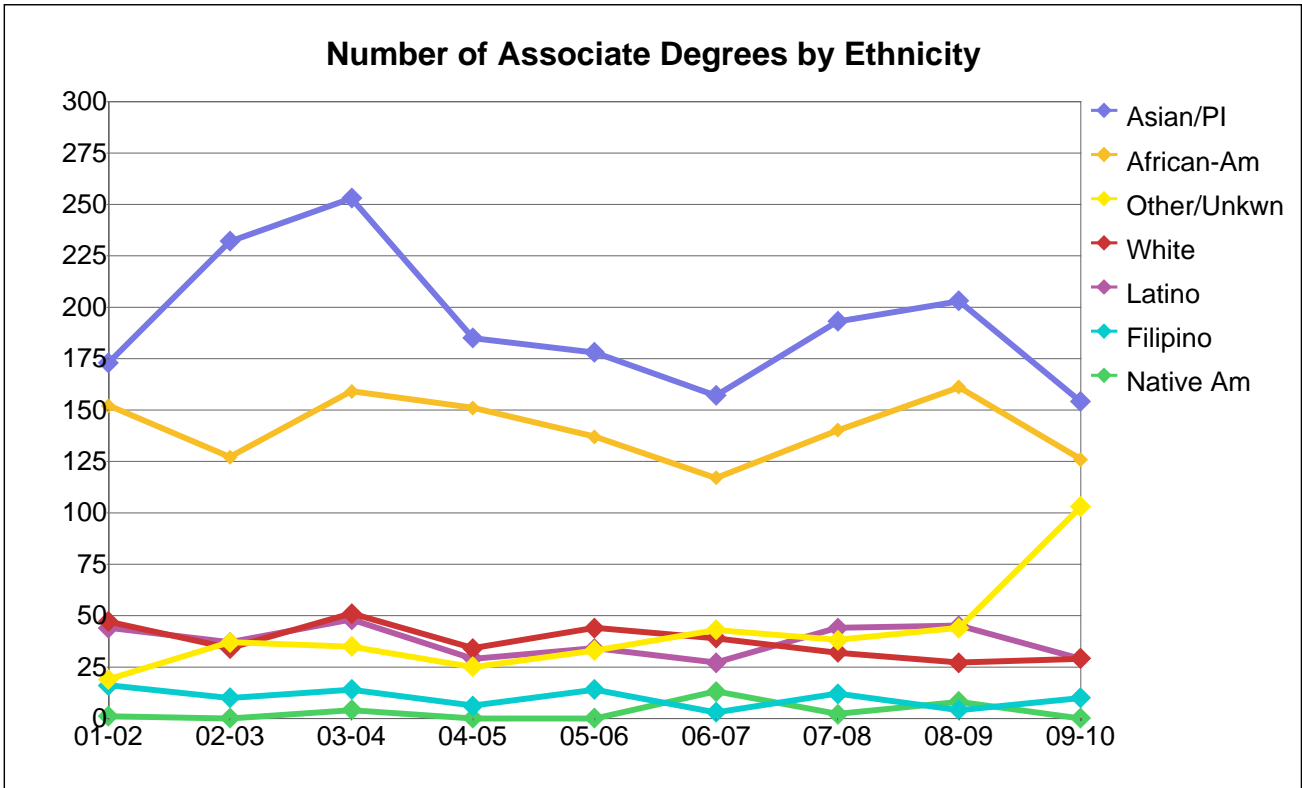
Number of Associate Degrees by Gender

Gender	01-02	02-03	03-04	04-05	05-06	06-07	07-08	08-09	09-10
Female	273	285	356	275	294	222	288	280	271
Male	179	182	195	154	140	171	165	207	162
Unknown		10	13	1	6	6	8	5	18
Total	452	477	564	430	440	399	461	492	451

Percentage Distribution of Associate Degrees by Gender

Gender	01-02	02-03	03-04	04-05	05-06	06-07	07-08	08-09	09-10
Female	60%	60%	63%	64%	67%	56%	62%	57%	60%
Male	40%	38%	35%	36%	32%	43%	36%	42%	36%
Unknown		2%	2%	0%	1%	2%	2%	1%	4%
Total	100%	100%	100%	100%	100%	100%	100%	100%	100%

Laney College



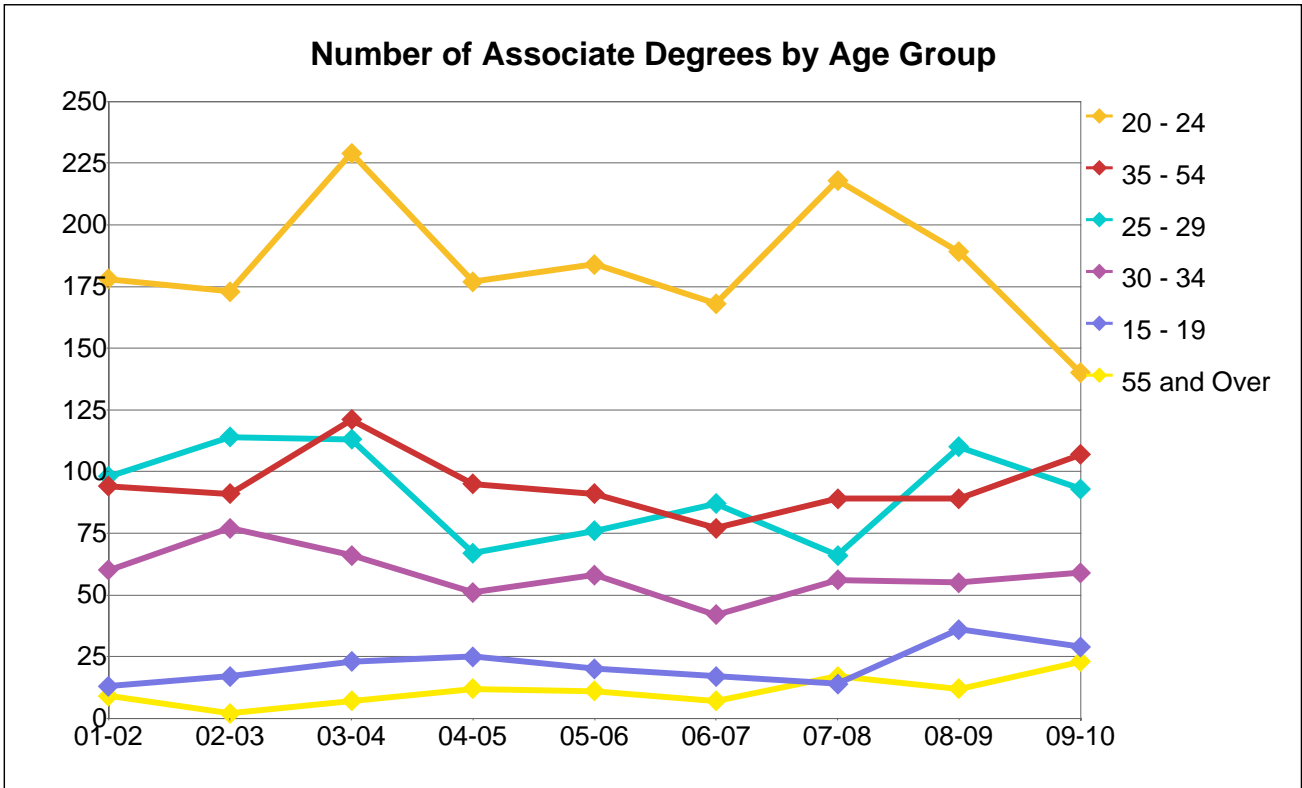
Number of Associate Degrees by Ethnicity

Ethnicity	01-02	02-03	03-04	04-05	05-06	06-07	07-08	08-09	09-10
African-Am	152	127	159	151	137	117	140	161	126
Asian/PI	173	232	253	185	178	157	193	203	154
Filipino	16	10	14	6	14	3	12	4	10
Latino	44	37	48	29	34	27	44	45	29
Native Am	1		4	0		13	2	8	
Other/Unkwn	19	37	35	25	33	43	38	44	103
White	47	34	51	34	44	39	32	27	29
Total	452	477	564	430	440	399	461	492	451

Percentage Distribution of Associate Degrees by Ethnicity

Ethnicity	01-02	02-03	03-04	04-05	05-06	06-07	07-08	08-09	09-10
African-Am	34%	27%	28%	35%	31%	29%	30%	33%	28%
Asian/PI	38%	49%	45%	43%	40%	39%	42%	41%	34%
Filipino	4%	2%	2%	1%	3%	1%	3%	1%	2%
Latino	10%	8%	9%	7%	8%	7%	10%	9%	6%
Native Am	0%		1%	0%		3%	0%	2%	
Other/Unkwn	4%	8%	6%	6%	8%	11%	8%	9%	23%
White	10%	7%	9%	8%	10%	10%	7%	5%	6%
Total	100%	100%	100%	100%	100%	100%	100%	100%	100%

Laney College



Number of Associate Degrees by Age Group

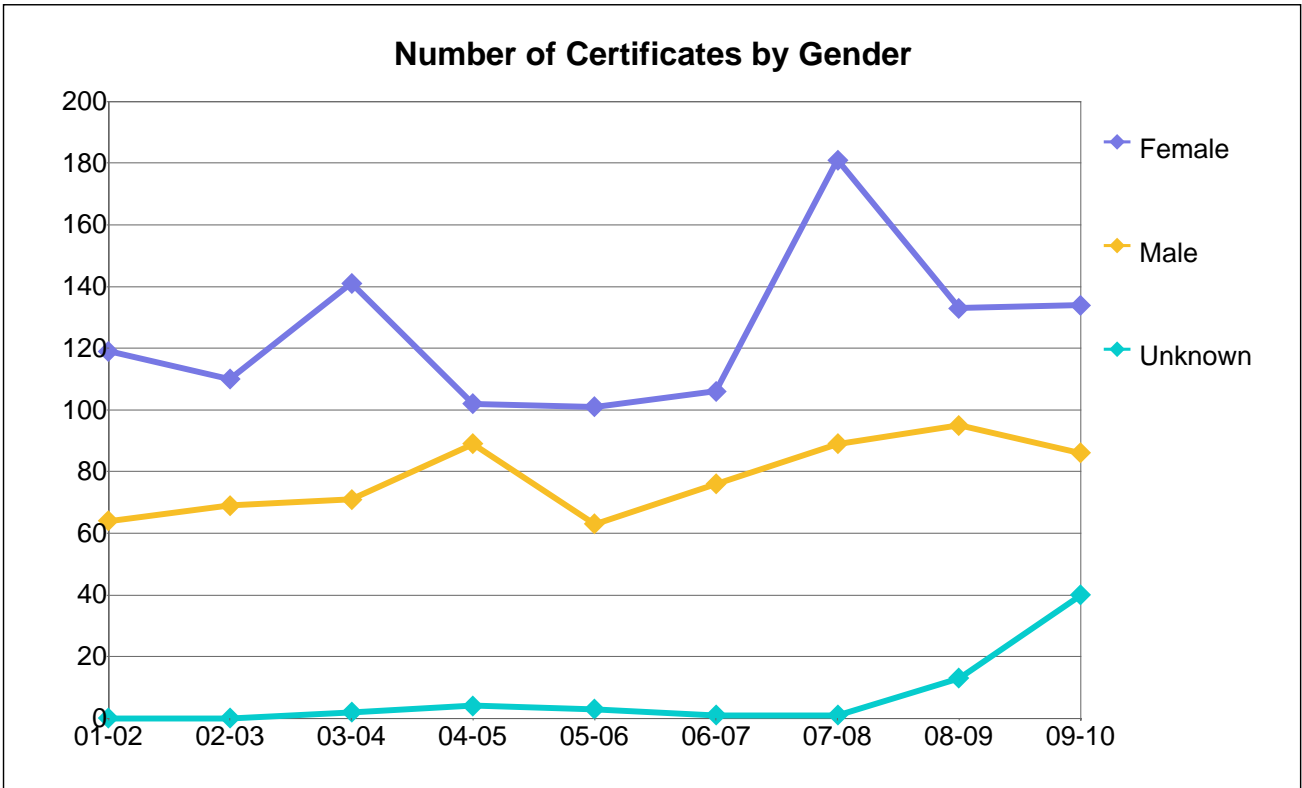
Age Group	01-02	02-03	03-04	04-05	05-06	06-07	07-08	08-09	09-10
15 - 19	13	17	23	25	20	17	14	36	29
20 - 24	178	173	229	177	184	168	218	189	140
25 - 29	98	114	113	67	76	87	66	110	93
30 - 34	60	77	66	51	58	42	56	55	59
35 - 54	94	91	121	95	91	77	89	89	107
55 and Ove	9	2	7	12	11	7	17	12	23
Unkwn		3	5	3	0	1	1	1	
Total	452	477	564	430	440	399	461	492	451

Percentage Distribution of Associate Degrees by Age Group

Age Group	01-02	02-03	03-04	04-05	05-06	06-07	07-08	08-09	09-10
15 - 19	3%	4%	4%	6%	5%	4%	3%	7%	6%
20 - 24	39%	36%	41%	41%	42%	42%	47%	38%	31%
25 - 29	22%	24%	20%	16%	17%	22%	14%	22%	21%
30 - 34	13%	16%	12%	12%	13%	11%	12%	11%	13%
35 - 54	21%	19%	21%	22%	21%	19%	19%	18%	24%
55 and Over	2%	0%	1%	3%	3%	2%	4%	2%	5%
Unkwn		1%	1%	1%	0%	0%	0%	0%	
Total	100%	100%	100%	100%	100%	100%	100%	100%	100%

Note: Age as of 12/15 of the award year.

Laney College



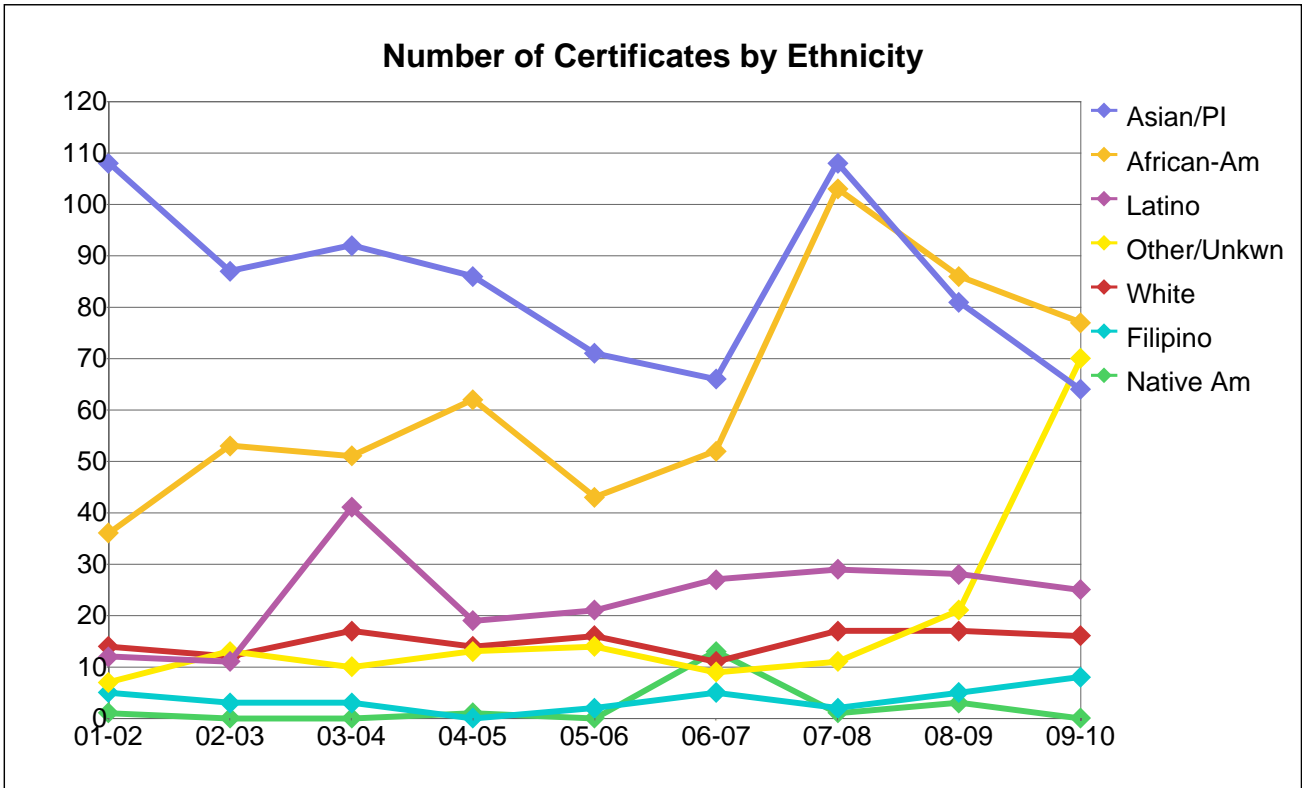
Number of Certificates by Gender

Gender	01-02	02-03	03-04	04-05	05-06	06-07	07-08	08-09	09-10
Female	119	110	141	102	101	106	181	133	134
Male	64	69	71	89	63	76	89	95	86
Unknown		0	2	4	3	1	1	13	40
Total	183	179	214	195	167	183	271	241	260

Percentage Distribution of Certificates by Gender

Gender	01-02	02-03	03-04	04-05	05-06	06-07	07-08	08-09	09-10
Female	65%	61%	66%	52%	60%	58%	67%	55%	52%
Male	35%	39%	33%	46%	38%	42%	33%	39%	33%
Unknown		0%	1%	2%	2%	1%	0%	5%	15%
Total	100%	100%	100%	100%	100%	100%	100%	100%	100%

Laney College



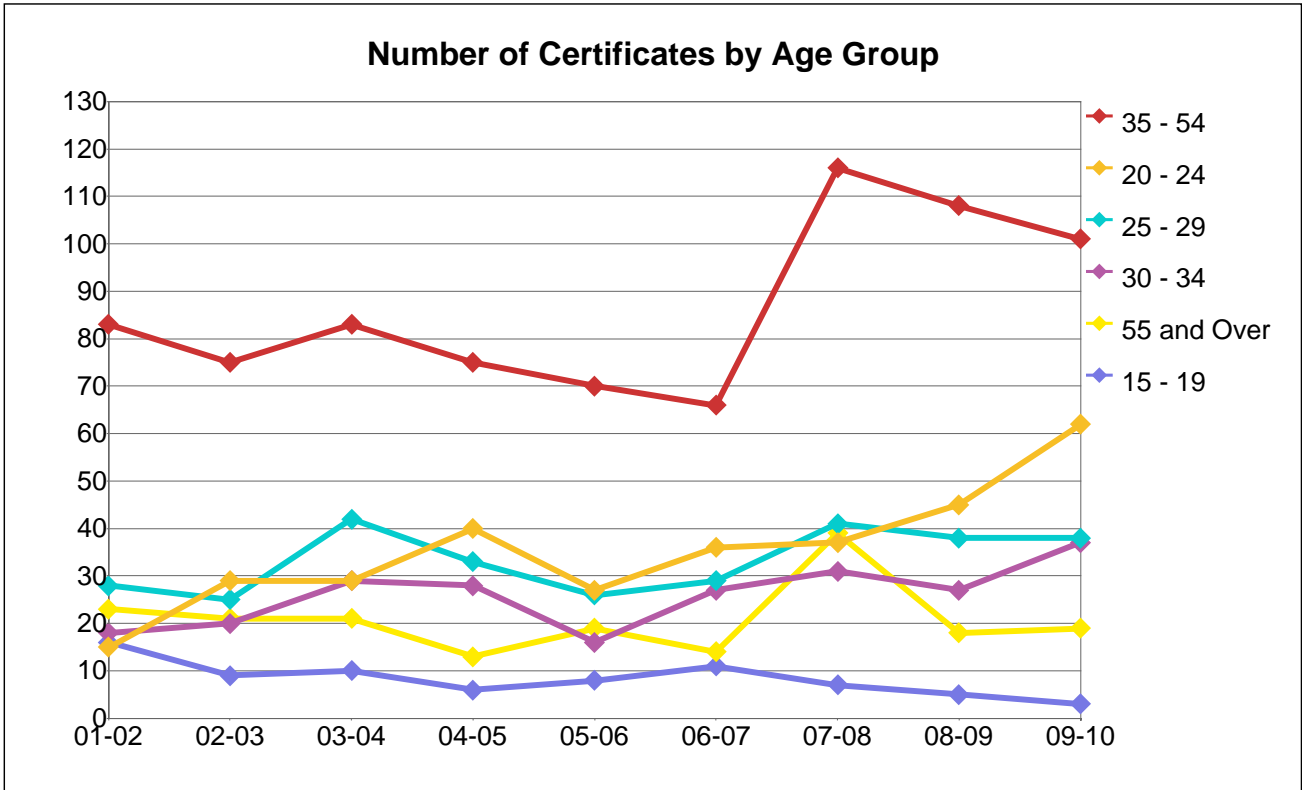
Number of Certificates by Ethnicity

Ethnicity	01-02	02-03	03-04	04-05	05-06	06-07	07-08	08-09	09-10
African-Am	36	53	51	62	43	52	103	86	77
Asian/PI	108	87	92	86	71	66	108	81	64
Filipino	5	3	3	0	2	5	2	5	8
Latino	12	11	41	19	21	27	29	28	25
Native Am	1		0	1		13	1	3	
Other/Unkwn	7	13	10	13	14	9	11	21	70
White	14	12	17	14	16	11	17	17	16
Total	183	179	214	195	167	183	271	241	260

Percentage Distribution of Certificates by Ethnicity

Ethnicity	01-02	02-03	03-04	04-05	05-06	06-07	07-08	08-09	09-10
African-Am	20%	30%	24%	32%	26%	28%	38%	36%	30%
Asian/PI	59%	49%	43%	44%	43%	36%	40%	34%	25%
Filipino	3%	2%	1%	0%	1%	3%	1%	2%	3%
Latino	7%	6%	19%	10%	13%	15%	11%	12%	10%
Native Am	1%		0%	1%		7%	0%	1%	
Other/Unkwn	4%	7%	5%	7%	8%	5%	4%	9%	27%
White	8%	7%	8%	7%	10%	6%	6%	7%	6%
Total	100%	100%	100%	100%	100%	100%	100%	100%	100%

Laney College



Number of Certificates by Age Group

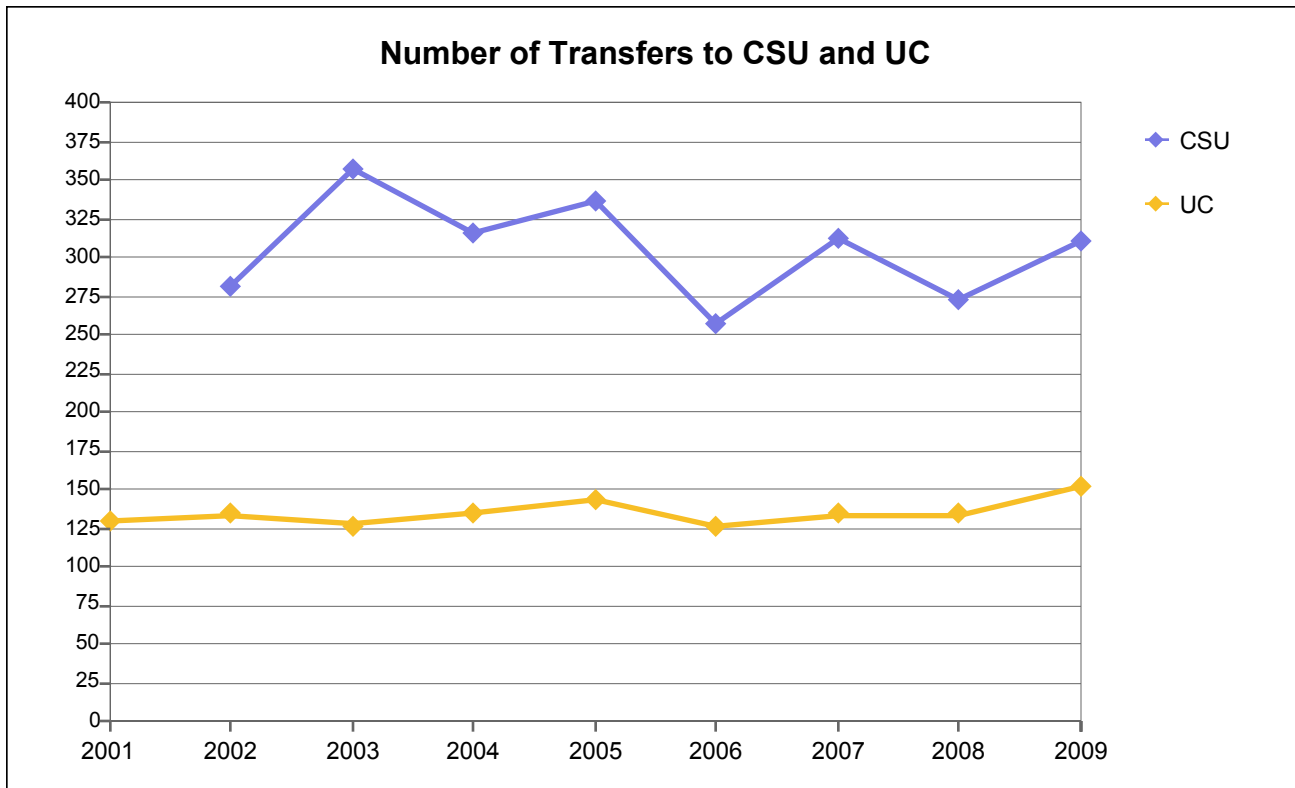
Age Group	01-02	02-03	03-04	04-05	05-06	06-07	07-08	08-09	09-10
15 - 19	16	9	10	6	8	11	7	5	3
20 - 24	15	29	29	40	27	36	37	45	62
25 - 29	28	25	42	33	26	29	41	38	38
30 - 34	18	20	29	28	16	27	31	27	37
35 - 54	83	75	83	75	70	66	116	108	101
55 and Ove	23	21	21	13	19	14	39	18	19
Unkwn		0	0	0	1	0	0	0	
Total	183	179	214	195	167	183	271	241	260

Percentage Distribution of Certificates by Age Group

Age Group	01-02	02-03	03-04	04-05	05-06	06-07	07-08	08-09	09-10
15 - 19	9%	5%	5%	3%	5%	6%	3%	2%	1%
20 - 24	8%	16%	14%	21%	16%	20%	14%	19%	24%
25 - 29	15%	14%	20%	17%	16%	16%	15%	16%	15%
30 - 34	10%	11%	14%	14%	10%	15%	11%	11%	14%
35 - 54	45%	42%	39%	38%	42%	36%	43%	45%	39%
55 and Ove	13%	12%	10%	7%	11%	8%	14%	7%	7%
Unkwn		0%	0%	0%	1%	0%	0%	0%	
Total	100%	100%	100%	100%	100%	100%	100%	100%	100%

Note: Age as of 12/15 of the award year.

Laney College



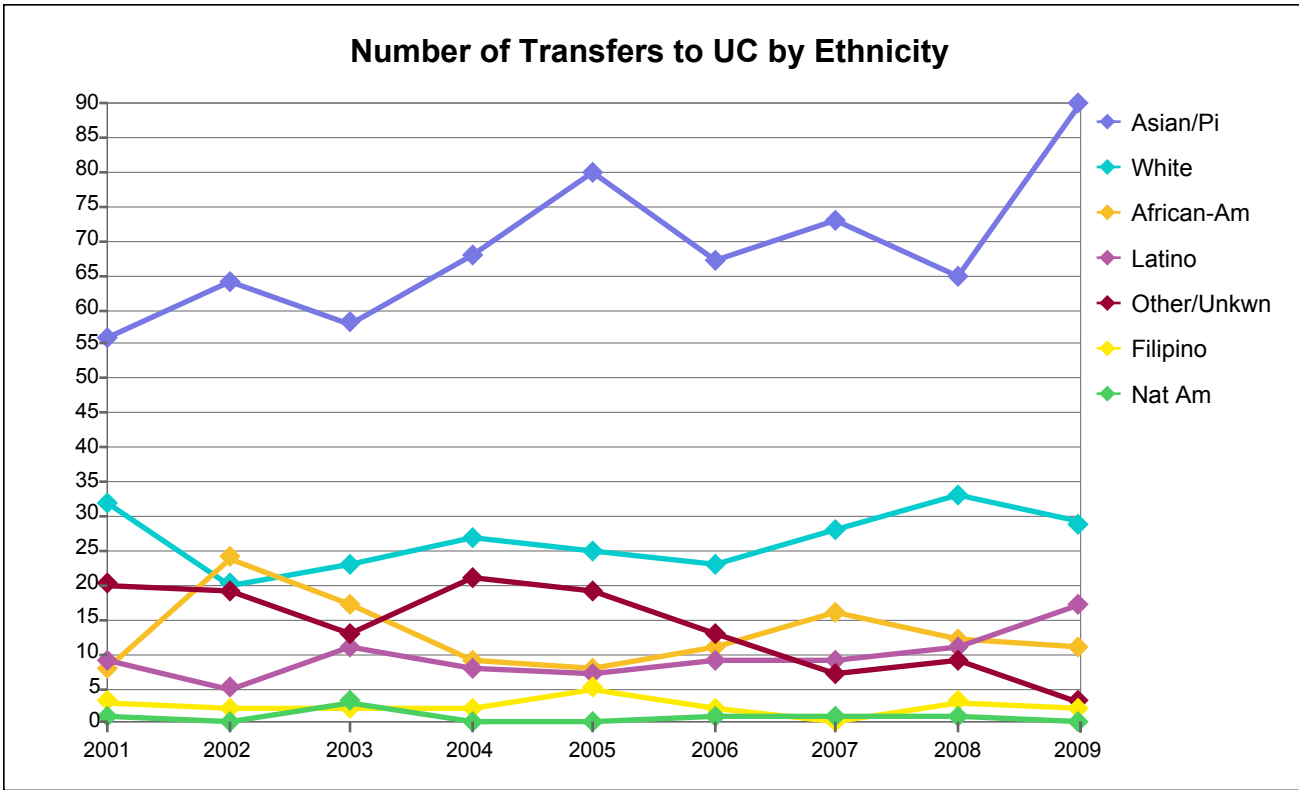
Number of Transfers to CSU and UC

System	2001	2002	2003	2004	2005	2006	2007	2008	2009
CSU		282	357	316	336	257	313	273	311
UC	129	134	127	135	144	126	134	134	152
Total	129	416	484	451	480	383	447	407	463

Percentage Distribution of Transfers to CSU and UC

System	2001	2002	2003	2004	2005	2006	2007	2008	2009
CSU		68%	74%	70%	70%	67%	70%	67%	67%
UC	100%	32%	26%	30%	30%	33%	30%	33%	33%
Total	100%	100%	100%	100%	100%	100%	100%	100%	100%

Laney College



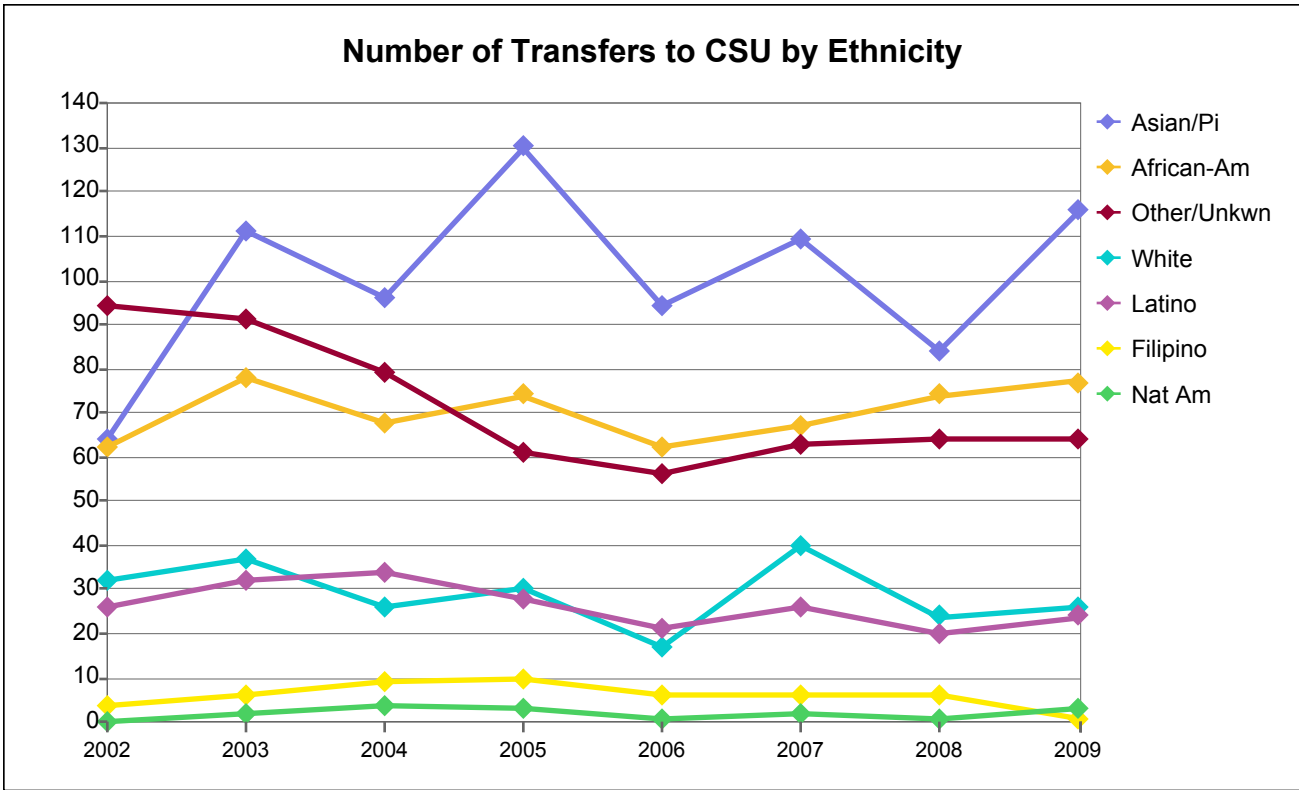
Number of UC Transfers by Ethnicity

Academic Yr Ending	Asian/Pi	African-Am	Filipino	Latino	Nat Am	White	Other/Unk	Totals
2001	56	8	3	9	1	32	20	129
2002	64	24	2	5	0	20	19	134
2003	58	17	2	11	3	23	13	127
2004	68	9	2	8	0	27	21	135
2005	80	8	5	7	0	25	19	144
2006	67	11	2	9	1	23	13	126
2007	73	16	0	9	1	28	7	134
2008	65	12	3	11	1	33	9	134
2009	90	11	2	17	0	29	3	152

Percentage Distribution of UC Transfers by Ethnicity

Academic Yr Ending	Asian/Pi	African-Am	Filipino	Latino	Nat Am	White	Other/Unk	Total
2001	43%	6%	2%	7%	1%	25%	16%	100%
2002	48%	18%	1%	4%	0%	15%	14%	100%
2003	46%	13%	2%	9%	2%	18%	10%	100%
2004	50%	7%	1%	6%	0%	20%	16%	100%
2005	56%	6%	3%	5%	0%	17%	13%	100%
2006	53%	9%	2%	7%	1%	18%	10%	100%
2007	54%	12%	0%	7%	1%	21%	5%	100%
2008	49%	9%	2%	8%	1%	25%	7%	100%
2009	59%	7%	1%	11%	0%	19%	2%	100%

Laney College



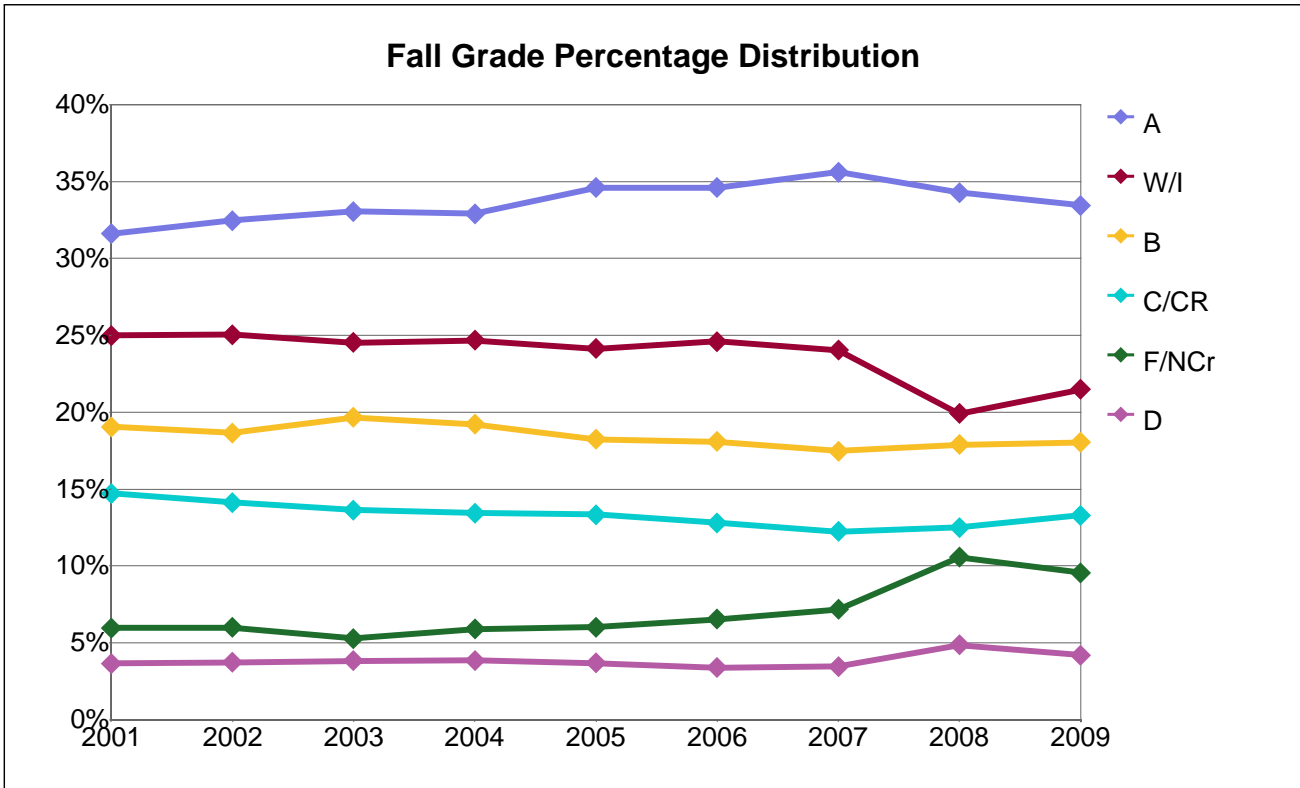
Number of CSU Transfers by Ethnicity

Academic Yr Ending	Asian/Pi	African-Am	Filipino	Latino	Nat Am	White	Other/Unk	Totals
2002	64	62	4	26	0	32	94	282
2003	111	78	6	32	2	37	91	357
2004	96	68	9	34	4	26	79	316
2005	130	74	10	28	3	30	61	336
2006	94	62	6	21	1	17	56	257
2007	109	67	6	26	2	40	63	313
2008	84	74	6	20	1	24	64	273
2009	116	77	1	24	3	26	64	311

Percentage Distribution of CSU Transfers by Ethnicity

Academic Yr Ending	Asian/Pi	African-Am	Filipino	Latino	Nat Am	White	Other/Unk	Total
2002	23%	22%	1%	9%	0%	11%	33%	100%
2003	31%	22%	2%	9%	1%	10%	25%	100%
2004	30%	22%	3%	11%	1%	8%	25%	100%
2005	39%	22%	3%	8%	1%	9%	18%	100%
2006	37%	24%	2%	8%	0%	7%	22%	100%
2007	35%	21%	2%	8%	1%	13%	20%	100%
2008	31%	27%	2%	7%	0%	9%	23%	100%
2009	37%	25%	0%	8%	1%	8%	21%	100%

Laney College



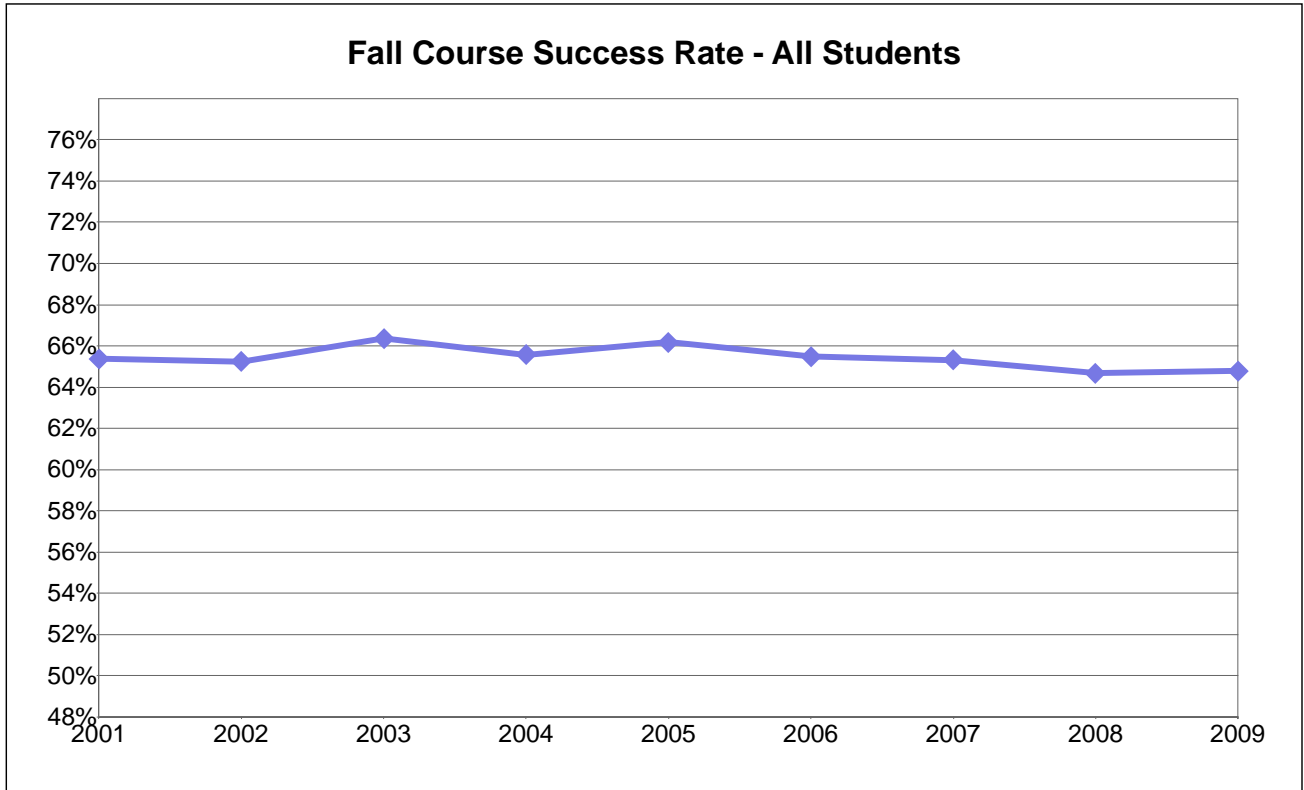
Fall Grade Frequency Distribution

Grade	2001	2002	2003	2004	2005	2006	2007	2008	2009
A	8,434	9,342	9,156	8,587	8,520	9,148	9,763	10,006	10,894
B	5,085	5,371	5,444	5,013	4,493	4,781	4,788	5,220	5,875
C	3,309	3,616	3,471	3,274	3,003	2,926	2,908	3,304	3,795
CR	621	450	308	233	280	459	445	349	538
D	979	1,073	1,064	1,005	906	896	951	1,416	1,366
F	1,103	1,201	1,218	1,277	1,240	1,268	1,304	2,954	2,925
I	272	223	265	253	228	201	266	8	489
NCr	491	523	244	261	243	458	659	132	185
W	6,400	6,985	6,529	6,186	5,715	6,307	6,324	5,803	6,504
Total	26,694	28,784	27,699	26,089	24,628	26,444	27,408	29,192	32,571

Fall Grade Percentage Distribution

Grade	2001	2002	2003	2004	2005	2006	2007	2008	2009
A	32%	32%	33%	33%	35%	35%	36%	34%	33%
B	19%	19%	20%	19%	18%	18%	17%	18%	18%
C	12%	13%	13%	13%	12%	11%	11%	11%	12%
CR	2%	2%	1%	1%	1%	2%	2%	1%	2%
D	4%	4%	4%	4%	4%	3%	3%	5%	4%
F	4%	4%	4%	5%	5%	5%	5%	10%	9%
I	1%	1%	1%	1%	1%	1%	1%	0%	2%
NCr	2%	2%	1%	1%	1%	2%	2%	0%	1%
W	24%	24%	24%	24%	23%	24%	23%	20%	20%
% of Column	100%	100%	100%	100%	100%	100%	100%	100%	100%

Laney College



Number of Fall Total Grades Awarded - All Students

Dimension	2001	2002	2003	2004	2005	2006	2007	2008	2009
All Students	26,694	28,784	27,699	26,089	24,628	26,444	27,408	29,192	32,571

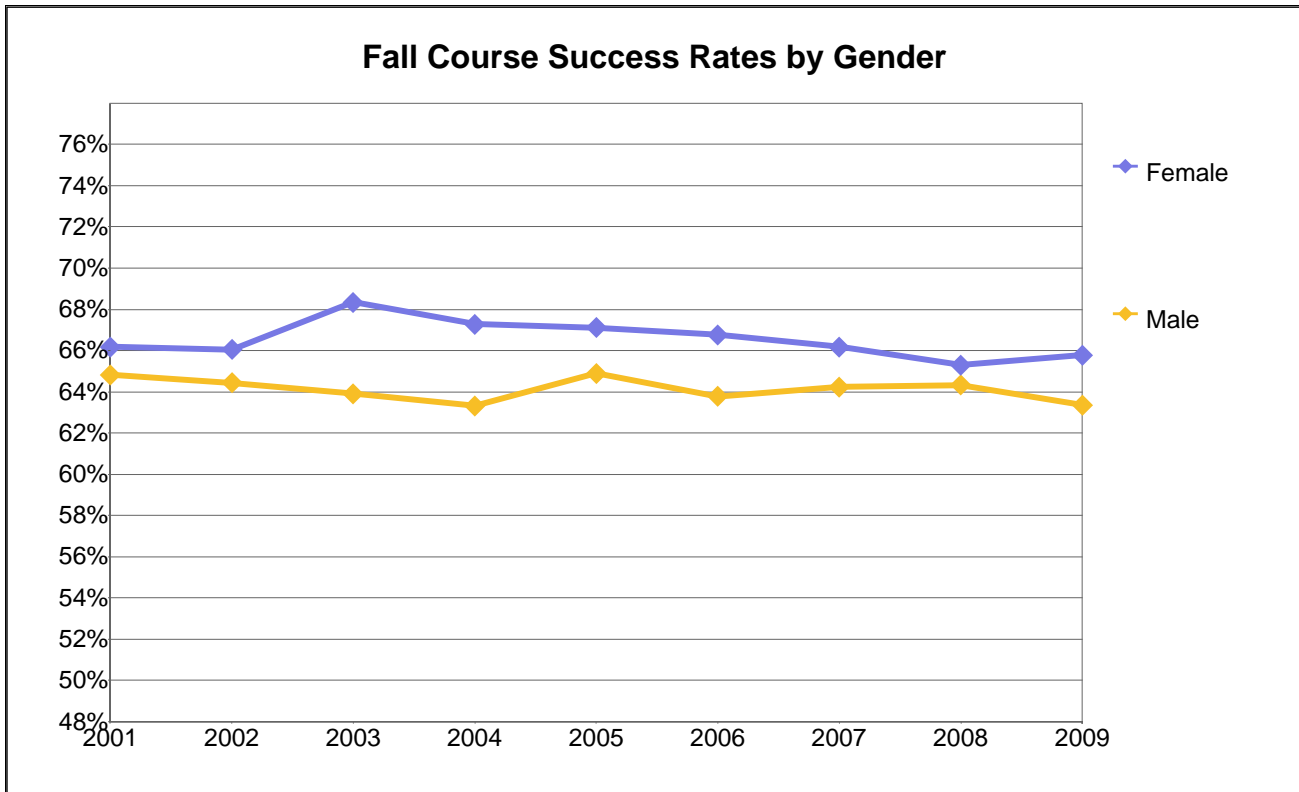
Number of Fall Successful Grades - All Students

Dimension	2001	2002	2003	2004	2005	2006	2007	2008	2009
All Students	17,449	18,779	18,379	17,107	16,296	17,314	17,904	18,879	21,102

Course Success Rates - All Students

Dimension	2001	2002	2003	2004	2005	2006	2007	2008	2009
All Students	65%	65%	66%	66%	66%	65%	65%	65%	65%

Laney College



Number of Fall Total Grades Awarded by Gender

Gender	2001	2002	2003	2004	2005	2006	2007	2008	2009
Female	14,898	16,069	15,452	14,675	13,742	14,807	15,194	15,519	16,293
Male	11,358	12,196	11,761	10,820	10,523	11,398	12,078	12,853	14,833
Unkwn	438	519	486	594	363	239	136	820	1,445
Total	26,694	28,784	27,699	26,089	24,628	26,444	27,408	29,192	32,571

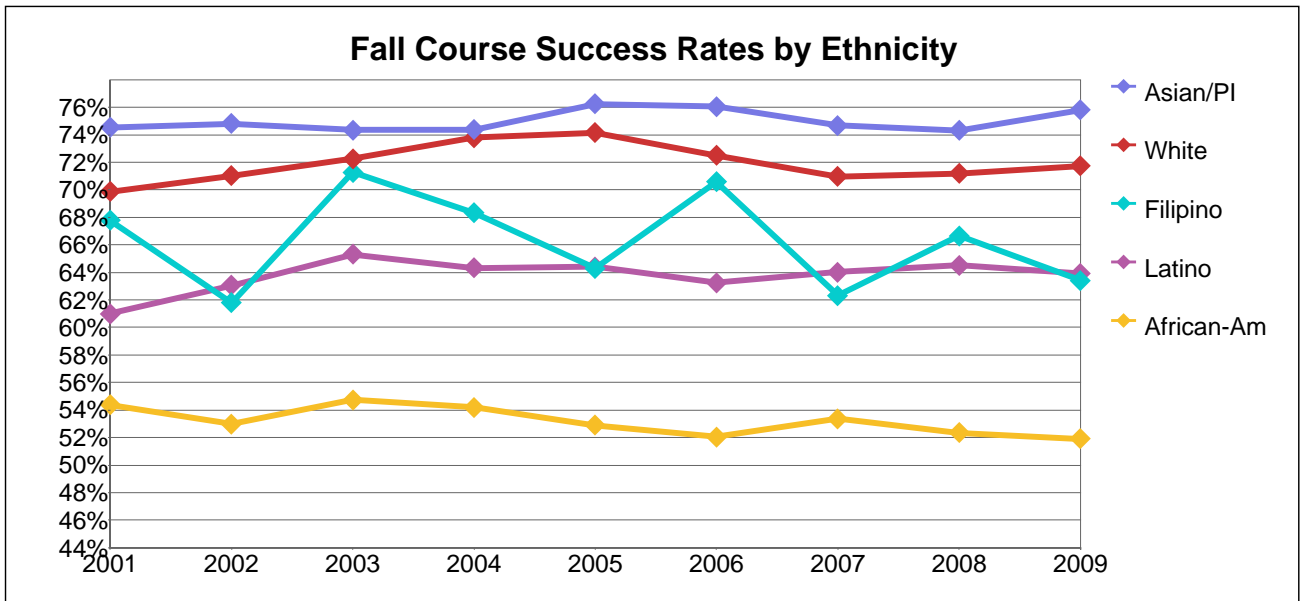
Number of Fall Successful Grades by Gender

Gender	2001	2002	2003	2004	2005	2006	2007	2008	2009
Female	9,859	10,613	10,559	9,873	9,222	9,886	10,056	10,133	10,718
Male	7,363	7,859	7,515	6,851	6,828	7,269	7,758	8,267	9,397
Unkwn	227	307	305	383	246	159	90	479	987
Total	17,449	18,779	18,379	17,107	16,296	17,314	17,904	18,879	21,102

Course Success Rates by Gender

Gender	2001	2002	2003	2004	2005	2006	2007	2008	2009
Female	66%	66%	68%	67%	67%	67%	66%	65%	66%
Male	65%	64%	64%	63%	65%	64%	64%	64%	63%
Unkwn	52%	59%	63%	64%	68%	67%	66%	58%	68%
All Students	65%	65%	66%	66%	66%	65%	65%	65%	65%

Laney College



Number of Fall Total Grades Awarded by Ethnicity

Ethnicity	2001	2002	2003	2004	2005	2006	2007	2008	2009
African-Am	8,037	8,871	8,468	8,343	7,946	8,465	8,675	9,175	8,727
Asian/PI	9,198	9,674	9,229	8,466	8,257	9,160	9,332	9,458	9,099
Filipino	534	581	588	543	423	418	422	513	432
Latino	3,369	3,750	3,583	3,338	2,998	3,062	3,183	3,494	2,902
Native Am	231	198	189	170	138	140	126	144	157
Other/Unkwn	1,771	1,973	1,846	2,165	1,921	2,042	2,216	3,049	8,414
White	3,554	3,737	3,796	3,064	2,945	3,157	3,454	3,359	2,840
Total	26,694	28,784	27,699	26,089	24,628	26,444	27,408	29,192	32,571

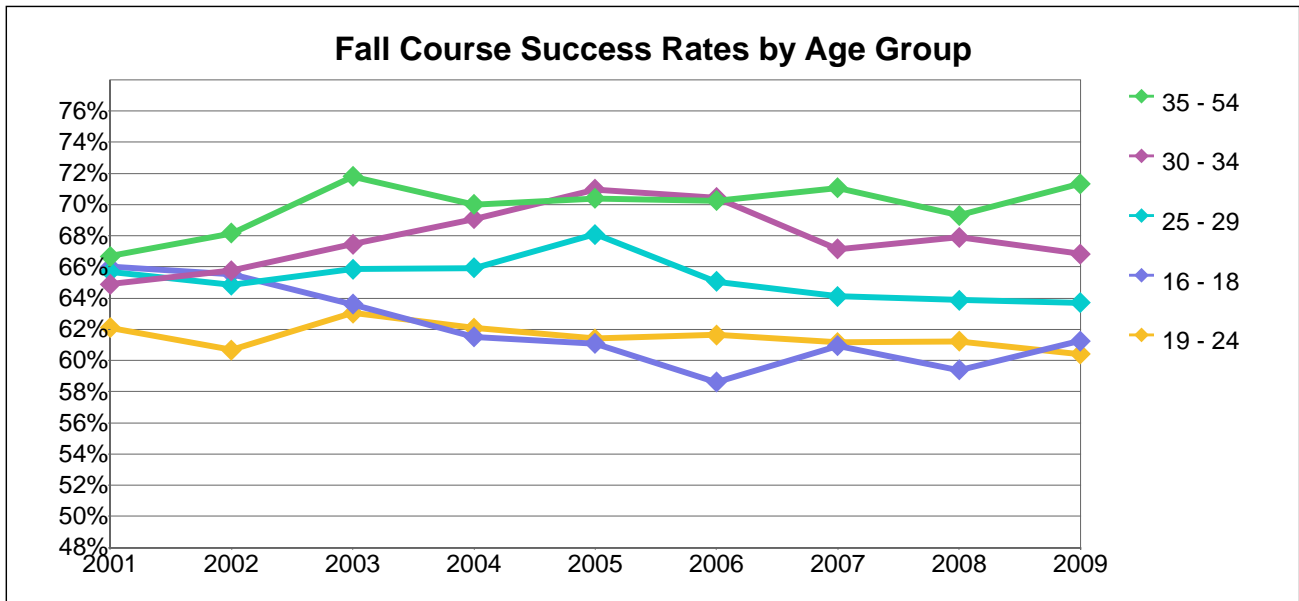
Number of Fall Successful Grades by Ethnicity

Ethnicity	2001	2002	2003	2004	2005	2006	2007	2008	2009
African-Am	4,370	4,699	4,635	4,521	4,204	4,405	4,630	4,803	4,531
Asian/PI	6,856	7,237	6,861	6,297	6,295	6,967	6,969	7,028	6,897
Filipino	362	359	419	371	272	295	263	342	274
Latino	2,055	2,365	2,340	2,147	1,931	1,937	2,038	2,254	1,855
Native Am	122	99	104	110	73	78	50	67	90
Other/Unkwn	1,201	1,366	1,277	1,400	1,337	1,343	1,503	1,994	5,418
White	2,483	2,654	2,743	2,261	2,184	2,289	2,451	2,391	2,037
Total	17,449	18,779	18,379	17,107	16,296	17,314	17,904	18,879	21,102

Course Success Rates by Ethnicity

Ethnicity	2001	2002	2003	2004	2005	2006	2007	2008	2009
African-Am	54%	53%	55%	54%	53%	52%	53%	52%	52%
Asian/PI	75%	75%	74%	74%	76%	76%	75%	74%	76%
Filipino	68%	62%	71%	68%	64%	71%	62%	67%	63%
Latino	61%	63%	65%	64%	64%	63%	64%	65%	64%
Native Am	53%	50%	55%	65%	53%	56%	40%	47%	57%
Other/Unkwn	68%	69%	69%	65%	70%	66%	68%	65%	64%
White	70%	71%	72%	74%	74%	73%	71%	71%	72%
All Students	65%	65%	66%	66%	66%	65%	65%	65%	65%

Laney College



Number of Fall Total Grades Awarded by Age Group

Age Group	2001	2002	2003	2004	2005	2006	2007	2008	2009
Under 16	621	679	243	215	243	199	298	399	290
16 - 18	2,650	3,269	2,778	2,785	2,528	2,805	2,927	3,390	3,506
19 - 24	9,793	10,417	10,731	10,112	9,675	9,906	10,406	11,135	13,194
25 - 29	4,177	4,278	4,183	3,912	3,672	3,956	4,024	4,251	4,661
30 - 34	2,762	3,107	2,956	2,747	2,466	2,774	2,605	2,709	2,822
35 - 54	5,451	5,870	5,764	5,323	5,004	5,448	5,543	5,783	6,458
55 and Over	1,240	1,164	1,044	995	1,040	1,356	1,605	1,525	1,640
Total	26,694	28,784	27,699	26,089	24,628	26,444	27,408	29,192	32,571

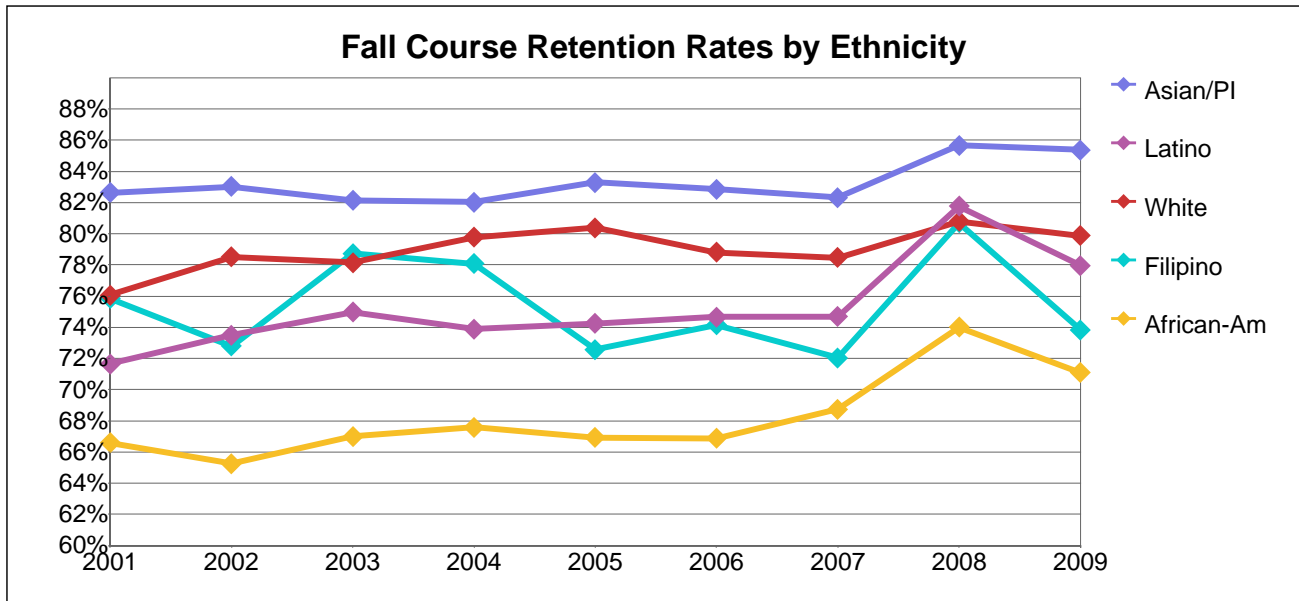
Number of Fall Successful Grades by Age Group

Age Group	2001	2002	2003	2004	2005	2006	2007	2008	2009
Under 16	557	618	211	191	228	178	280	354	270
16 - 18	1,749	2,143	1,767	1,713	1,544	1,644	1,784	2,013	2,148
19 - 24	6,082	6,320	6,767	6,278	5,940	6,106	6,364	6,818	7,971
25 - 29	2,744	2,774	2,755	2,579	2,500	2,574	2,580	2,715	2,969
30 - 34	1,792	2,043	1,994	1,898	1,750	1,954	1,749	1,839	1,886
35 - 54	3,635	4,001	4,138	3,726	3,522	3,827	3,940	4,007	4,607
55 and Over	890	880	747	722	812	1,031	1,207	1,133	1,251
Total	17,449	18,779	18,379	17,107	16,296	17,314	17,904	18,879	21,102

Course Success Rates by Age Group

Age Group	2001	2002	2003	2004	2005	2006	2007	2008	2009
Under 16	90%	91%	87%	89%	94%	89%	94%	89%	93%
16 - 18	66%	66%	64%	62%	61%	59%	61%	59%	61%
19 - 24	62%	61%	63%	62%	61%	62%	61%	61%	60%
25 - 29	66%	65%	66%	66%	68%	65%	64%	64%	64%
30 - 34	65%	66%	67%	69%	71%	70%	67%	68%	67%
35 - 54	67%	68%	72%	70%	70%	70%	71%	69%	71%
55 and Over	72%	76%	72%	73%	78%	76%	75%	74%	76%
All Students	65%	65%	66%	66%	66%	65%	65%	65%	65%

Laney College



Number of Fall Total Grades Awarded by Ethnicity

Ethnicity	2001	2002	2003	2004	2005	2006	2007	2008	2009
African-Am	8,037	8,871	8,468	8,343	7,946	8,465	8,675	9,175	8,727
Asian/PI	9,198	9,674	9,229	8,466	8,257	9,160	9,332	9,458	9,099
Filipino	534	581	588	543	423	418	422	513	432
Latino	3,369	3,750	3,583	3,338	2,998	3,062	3,183	3,494	2,902
Native Am	231	198	189	170	138	140	126	144	157
Other/Unkwn	1,771	1,973	1,846	2,165	1,921	2,042	2,216	3,049	8,414
White	3,554	3,737	3,796	3,064	2,945	3,157	3,454	3,359	2,840
Total	26,694	28,784	27,699	26,089	24,628	26,444	27,408	29,192	32,571

Number of Fall Completion Grades by Ethnicity

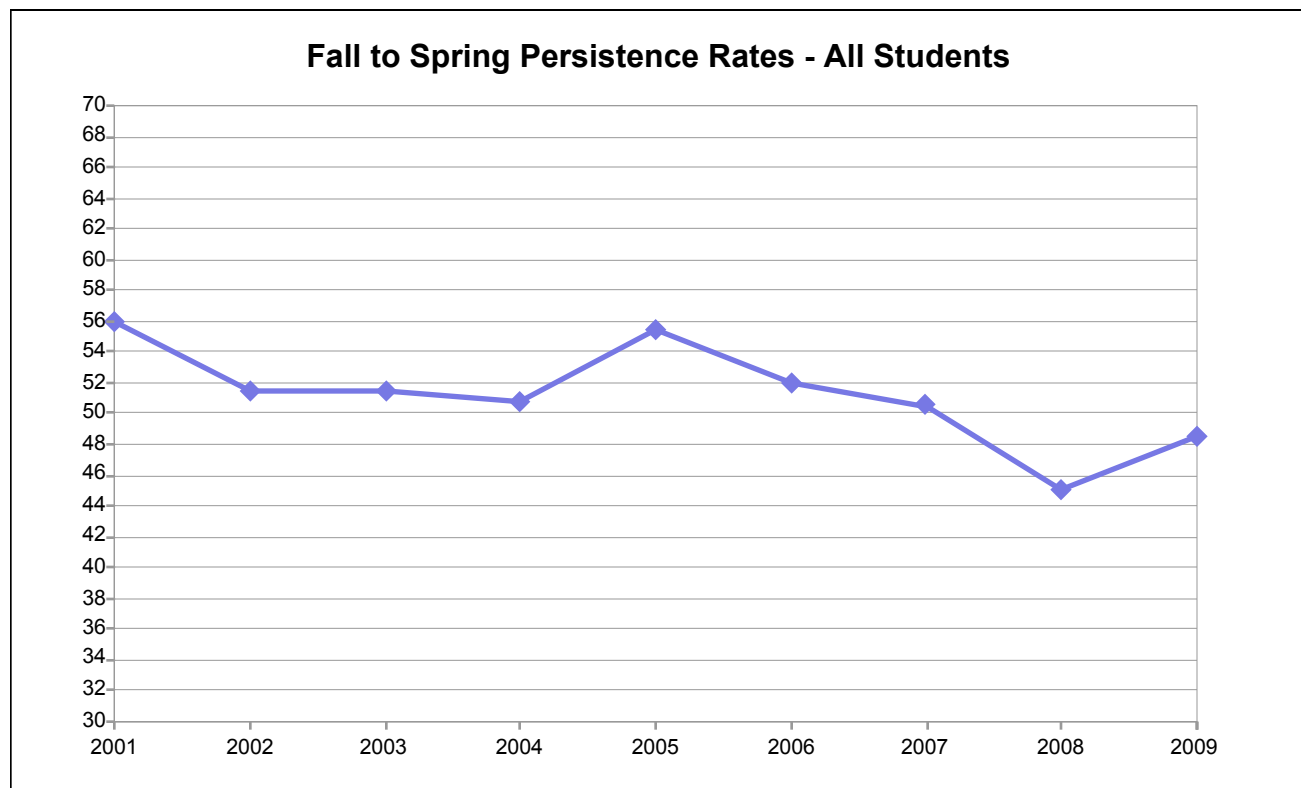
Ethnicity	2001	2002	2003	2004	2005	2006	2007	2008	2009
African-Am	5,351	5,790	5,674	5,638	5,319	5,661	5,963	6,789	6,205
Asian/PI	7,601	8,031	7,580	6,945	6,877	7,589	7,681	8,101	7,769
Filipino	405	423	463	424	307	310	304	414	319
Latino	2,414	2,756	2,686	2,466	2,226	2,286	2,377	2,857	2,262
Native Am	154	128	125	130	90	93	69	100	107
Other/Unkwn	1,394	1,514	1,410	1,603	1,499	1,509	1,714	2,406	6,648
White	2,703	2,934	2,967	2,444	2,367	2,488	2,710	2,714	2,268
Total	20,022	21,576	20,905	19,650	18,685	19,936	20,818	23,381	25,578

Course Retention Rates by Ethnicity

Ethnicity	2001	2002	2003	2004	2005	2006	2007	2008	2009
African-Am	67%	65%	67%	68%	67%	67%	69%	74%	71%
Asian/PI	83%	83%	82%	82%	83%	83%	82%	86%	85%
Filipino	76%	73%	79%	78%	73%	74%	72%	81%	74%
Latino	72%	73%	75%	74%	74%	75%	75%	82%	78%
Native Am	67%	65%	66%	76%	65%	66%	55%	69%	68%
Other/Unkwn	79%	77%	76%	74%	78%	74%	77%	79%	79%
White	76%	79%	78%	80%	80%	79%	78%	81%	80%
All Students	75%	75%	75%	75%	76%	75%	76%	80%	79%

Retention is defined as the number of grades of A, B, C, CR, D, NC, or F divided by the total number of official grades including official W's.

Laney College



Number Enrolled at Fall Census - All Students

Dimension	2001	2002	2003	2004	2005	2006	2007	2008	2009
All Students	12,637	13,992	13,778	12,690	11,908	12,274	12,772	13,408	14,735

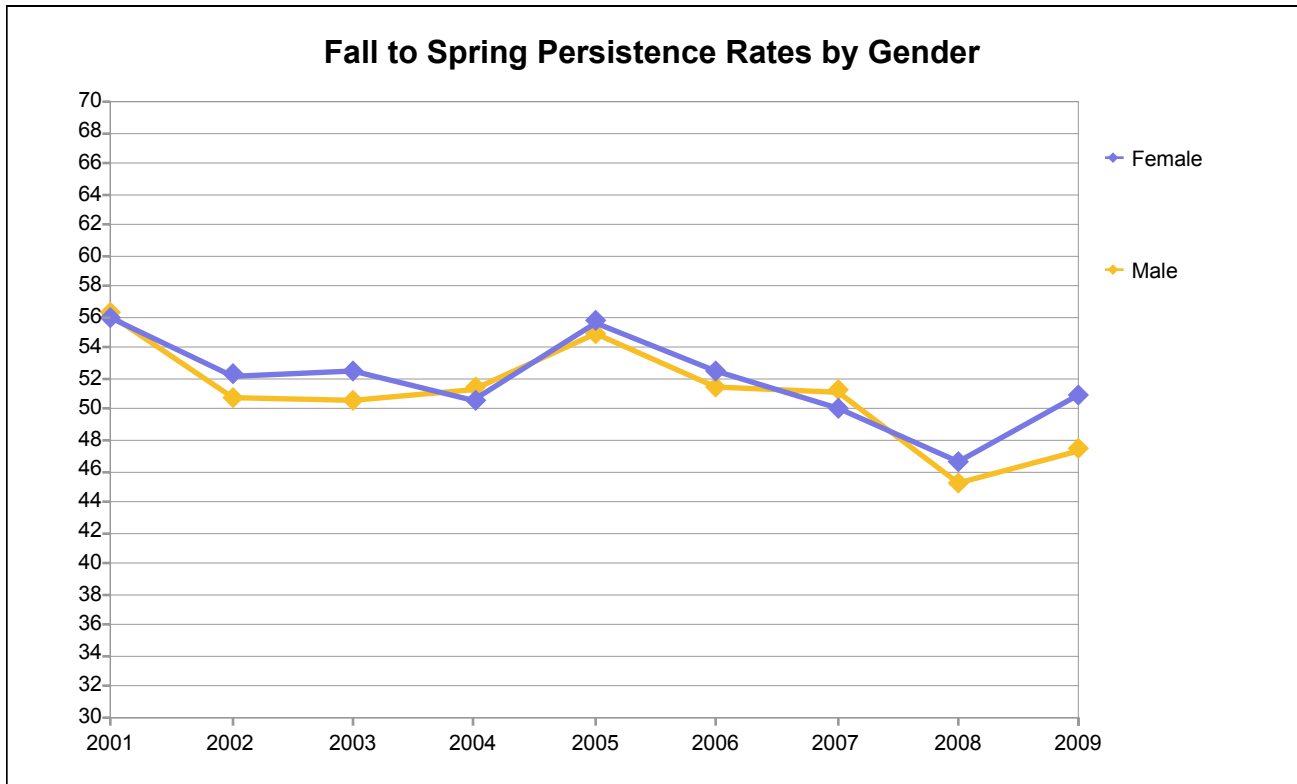
Number of Fall Persisting to Spring Opening Day - All Students

Dimension	2001	2002	2003	2004	2005	2006	2007	2008	2009
All Students	7,066	7,201	7,095	6,436	6,599	6,382	6,454	6,036	7,157

Fall to Spring Persistence Rates - All Students

Dimension	2001	2002	2003	2004	2005	2006	2007	2008	2009
All Students	56	51	51	51	55	52	51	45	49

Laney College



Number Enrolled at Fall Census by Gender

Gender	2001	2002	2003	2004	2005	2006	2007	2008	2009
Female	7,067	7,893	7,773	7,288	6,802	7,037	7,319	7,123	7,441
Male	5,351	5,814	5,690	5,074	4,916	5,112	5,377	5,562	6,143
Unkwn	219	285	315	328	190	125	76	723	1,151
Total	12,637	13,992	13,778	12,690	11,908	12,274	12,772	13,408	14,735

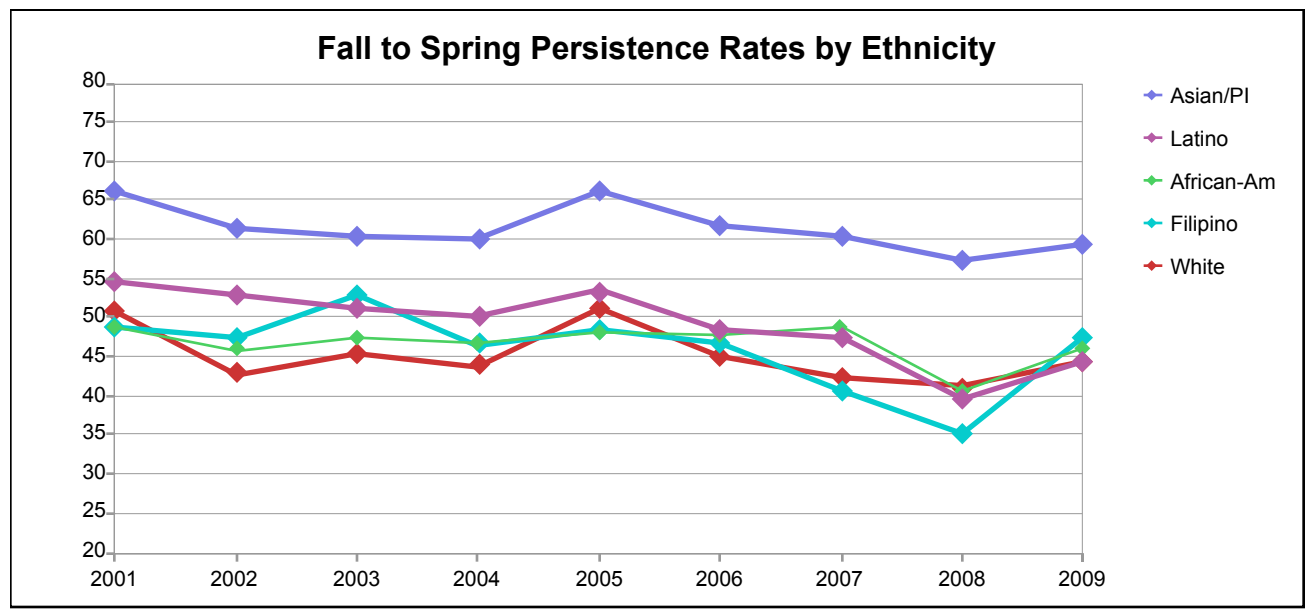
Number of Fall Persisting to Spring Opening Day by Gender

Gender	2001	2002	2003	2004	2005	2006	2007	2008	2009
Female	3,952	4,124	4,083	3,690	3,791	3,697	3,671	3,317	3,786
Male	3,009	2,950	2,876	2,606	2,699	2,627	2,754	2,510	2,911
Unkwn	105	127	136	140	109	58	29	209	460
Total	7,066	7,201	7,095	6,436	6,599	6,382	6,454	6,036	7,157

Fall to Spring Persistence Rates by Gender

Gender	2001	2002	2003	2004	2005	2006	2007	2008	2009
Female	56	52	53	51	56	53	50	47	51
Male	56	51	51	51	55	51	51	45	47
Unkwn	48	45	43	43	57	46	38	29	40
Total	56	51	51	51	55	52	51	45	49

Laney College



Number Enrolled at Fall Census by Ethnicity

Ethnicity	2001	2002	2003	2004	2005	2006	2007	2008	2009
African-Am	3,557	3,943	3,919	3,713	3,521	3,576	3,608	3,782	3,419
Asian/PI	4,078	4,538	4,360	3,979	3,819	4,043	4,154	4,076	3,673
Filipino	285	299	314	292	245	237	235	273	223
Latino	1,627	1,833	1,769	1,653	1,485	1,537	1,562	1,698	1,364
Native Am	104	85	89	83	60	64	60	206	72
Other/Unkwn	1,009	1,210	1,227	1,147	1,031	1,034	1,185	1,407	4,469
White	1,977	2,084	2,100	1,823	1,747	1,783	1,968	1,966	1,515
Total	12,637	13,992	13,778	12,690	11,908	12,274	12,772	13,408	14,735

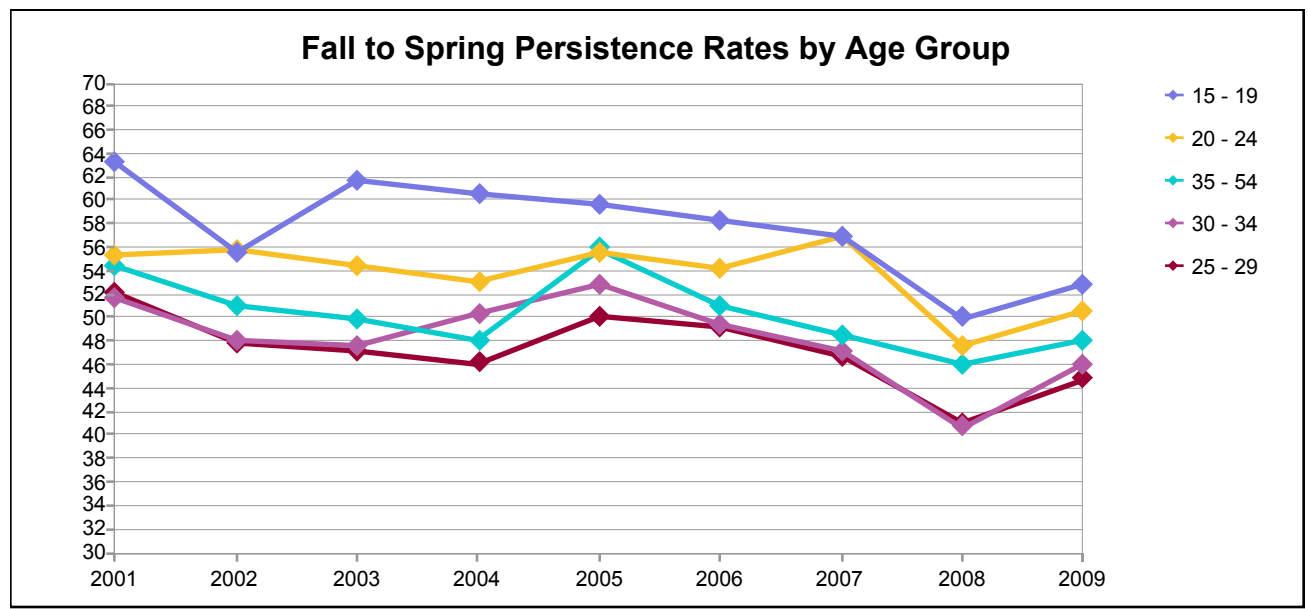
Number of Fall Persisting to Spring Opening Day by Ethnicity

Ethnicity	2001	2002	2003	2004	2005	2006	2007	2008	2009
African-Am	1,733	1,809	1,853	1,740	1,689	1,705	1,763	1,530	1,571
Asian/PI	2,698	2,792	2,630	2,393	2,526	2,502	2,507	2,330	2,185
Filipino	139	142	166	136	119	111	95	96	106
Latino	886	970	905	827	793	746	739	670	603
Native Am	46	41	33	39	27	31	22	89	34
Other/Unkwn	559	555	553	501	552	483	495	513	1,986
White	1,005	892	955	800	893	804	833	808	672
Total	7,066	7,201	7,095	6,436	6,599	6,382	6,454	6,036	7,157

Fall to Spring Persistence Rates by Ethnicity

Ethnicity	2001	2002	2003	2004	2005	2006	2007	2008	2009
African-Am	48.7	45.9	47.3	46.9	48.0	47.7	48.9	40.5	45.9
Asian/PI	66.2	61.5	60.3	60.1	66.1	61.9	60.4	57.2	59.5
Filipino	48.8	47.5	52.9	46.6	48.6	46.8	40.4	35.2	47.5
Latino	54.5	52.9	51.2	50.0	53.4	48.5	47.3	39.5	44.2
Native Am	44.2	48.2	37.1	47.0	45.0	48.4	36.7	43.2	47.2
Other/Unkwn	55.4	45.9	45.1	43.7	53.5	46.7	41.8	36.5	44.4
White	50.8	42.8	45.5	43.9	51.1	45.1	42.3	41.1	44.4
All	55.9	51.5	51.5	50.7	55.4	52.0	50.5	45.0	48.6

Laney College



Number Enrolled at Fall Census by Age Group

Age Group	2001	2002	2003	2004	2005	2006	2007	2008	2009
15 - 19	1,825	2,261	2,033	1,893	1,838	1,902	2,001	2,262	2,532
20 - 24	3,271	3,529	3,731	3,442	3,176	3,125	3,223	3,450	4,245
25 - 29	2,114	2,283	2,260	2,078	1,944	1,988	2,038	2,151	2,328
30 - 34	1,479	1,665	1,628	1,491	1,320	1,426	1,416	1,349	1,388
35 - 54	3,046	3,271	3,307	3,003	2,810	2,927	2,964	2,964	3,093
55 and Over	588	666	663	637	667	802	929	949	954
Other/Unkwn	314	317	156	146	153	104	201	283	195
Total	12,637	13,992	13,778	12,690	11,908	12,274	12,772	13,408	14,735

Number of Fall Persisting to Spring Opening Day by Age Group

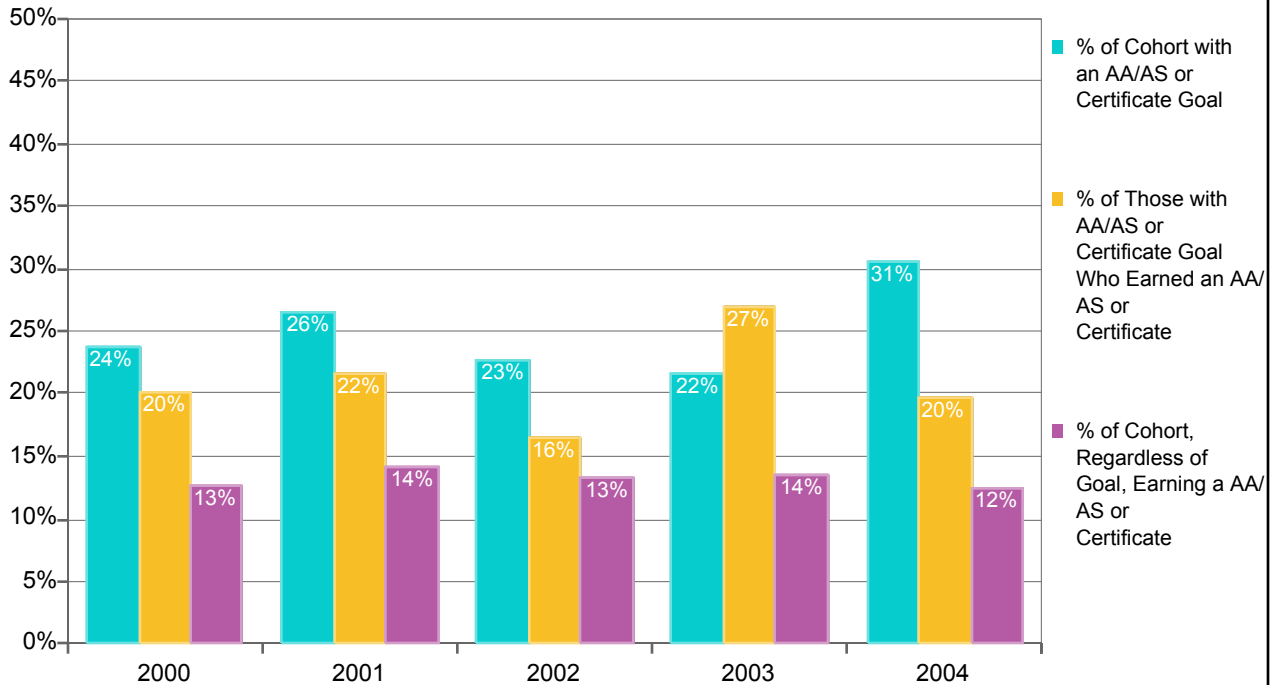
Age Group	2001	2002	2003	2004	2005	2006	2007	2008	2009
15 - 19	1,156	1,255	1,254	1,146	1,096	1,109	1,140	1,130	1,339
20 - 24	1,813	1,972	2,028	1,824	1,764	1,694	1,838	1,645	2,148
25 - 29	1,102	1,090	1,064	958	976	978	953	883	1,042
30 - 34	766	801	774	750	698	704	666	549	638
35 - 54	1,659	1,667	1,650	1,445	1,571	1,494	1,438	1,364	1,488
55 and Over	365	326	312	304	410	388	405	459	497
Other/Unkwn	205	90	13	9	84	15	14	6	5
Total	7,066	7,201	7,095	6,436	6,599	6,382	6,454	6,036	7,157

Fall to Spring Persistence Rates by Age Group

Age Group	2001	2002	2003	2004	2005	2006	2007	2008	2009
15 - 19	63	56	62	61	60	58	57	50	53
20 - 24	55	56	54	53	56	54	57	48	51
25 - 29	52	48	47	46	50	49	47	41	45
30 - 34	52	48	48	50	53	49	47	41	46
35 - 54	54	51	50	48	56	51	49	46	48
55 and Over	62	49	47	48	61	48	44	48	52
Other/Unkwn	65	28	8	6	55	14	7	2	3
Total	56	51	51	51	55	52	51	45	49

Laney College

Percentages of the Fall First-Time College Cohorts with AA/AS or Certificate Goals, Those with Goals Earning an Award, and Those Earning an Award Regardless of Goal within Six Years

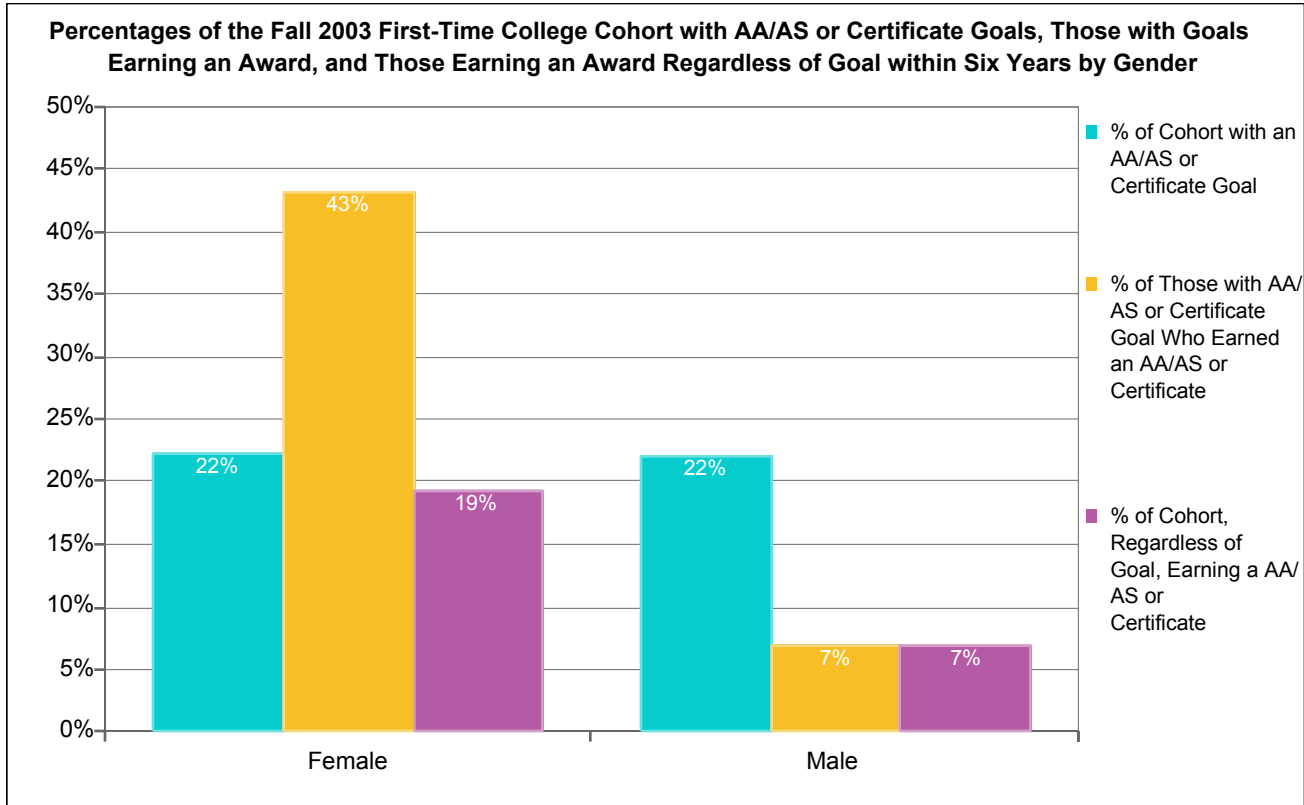


Count and Percentage Tracking of the Fall Matriculated First-Time College Cohorts for AA/AS Degree or Certificate Goals and AA/AS or Certificate Awards within Six Years

Fall First-time College Cohort	Count of Fall Cohort	Count of Cohort with AA/AS or Certificate Goal	Percent of Cohort with AA/AS or Certificate Goal	Count of Cohort with AA/AS or Certificate Goal Who Earned an AA/AS or Certificate	Percent of Those with AA/AS or Certificate Goal Who Earned an AA/AS or Certificate	Count of Cohort, Regardless of Goal, Earning a Degree or Certificate	Percent of Cohort, Regardless of Goal, Earning a Degree or Certificate
2000	189	45	24%	9	20%	24	13%
2001	227	60	26%	13	22%	32	14%
2002	243	55	23%	9	16%	32	13%
2003	310	67	22%	18	27%	42	14%
2004	281	86	31%	17	20%	35	12%
Totals	1,250	313	25%	66	21%	165	13%

Note: The cohort consists of Fall students enrolled at census with an Enrollment Status of "First-Time College" and with a Matriculation Status of "Matriculated." The student's goal is the Informed or Matriculation Goal with values of 1, 3, 4, or 5, i.e., the goals of Transfer with an AA/AS, AA/AS General Education, AA/AS Vocational, or Certificate. Students are individually tracked to determine the number of the cohort, the number of those with the indicated goals who earn an AA/AS degree or Certificate at any Peralta CCD college, and the number who, regardless of goal, earn an AA/AS degree or Certificate at any Peralta CCD college within the indicated number of years.

Laney College

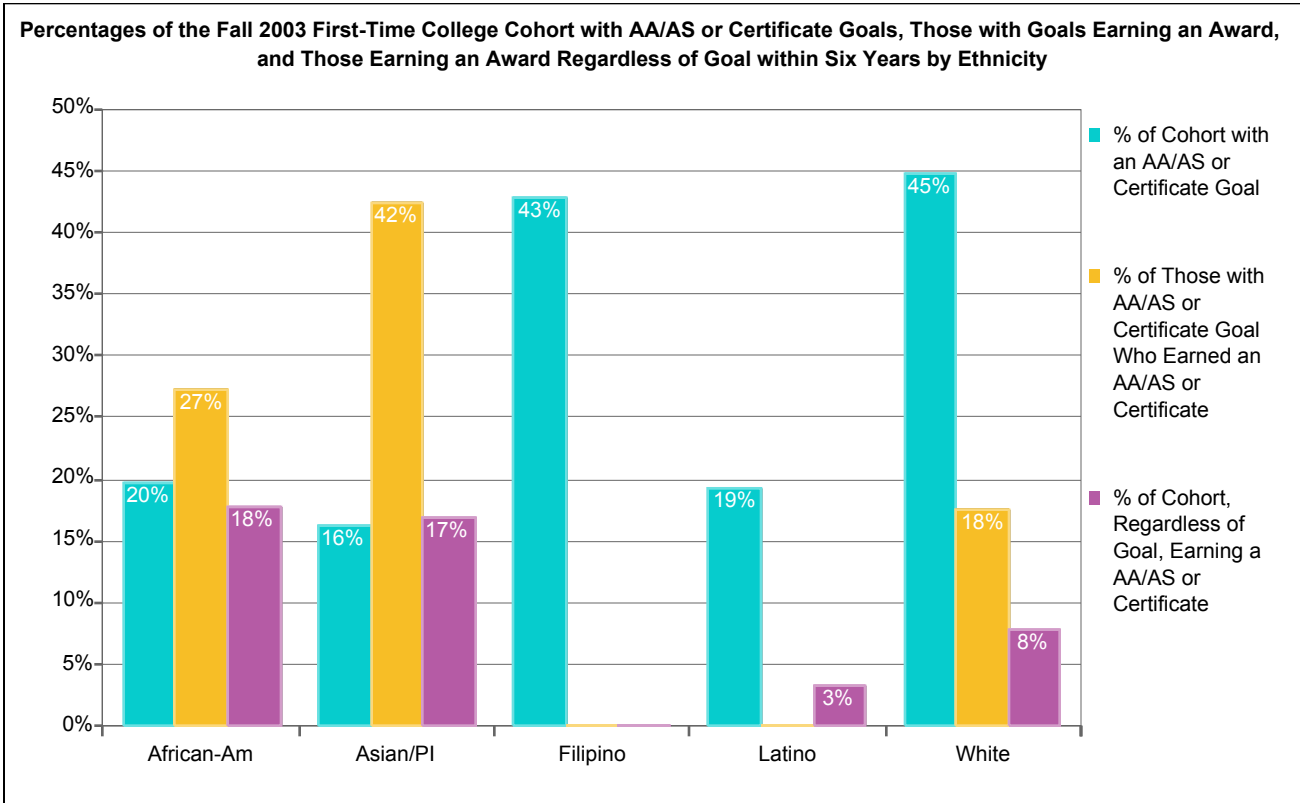


Count and Percentage Tracking of the Fall 2003 Matriculated First-Time College Cohort for AA/AS Degree or Certificate Goals and AA/AS or Certificate Awards within Six Years by Gender

Gender	Count of Fall Cohort	Count of Cohort with AA/AS or Certificate Goal	Percent of Cohort with AA/AS or Certificate Goal	Count of Cohort with AA/AS or Certificate Goal Who Earned an AA/AS or Certificate	Percent of Those with AA/AS or Certificate Goal Who Earned an AA/AS or Certificate	Count of Cohort, Regardless of Goal, Earning a Degree or Certificate	Percent of Cohort, Regardless of Goal, Earning a Degree or Certificate
Female	166	37	22%	16	43%	32	19%
Male	132	29	22%	2	7%	9	7%
Unkwn	12	1	8%	0	0%	1	8%
Totals	310	67	22%	18	27%	42	14%

Note: The cohort consists of Fall students enrolled at census with an Enrollment Status of "First-Time College" and with a Matriculation Status of "Matriculated." The student's goal is the Informed or Matriculation Goal with values of 1, 3, 4, or 5, i.e., the goals of Transfer with an AA/AS, AA/AS General Education, AA/AS Vocational, or Certificate. Students are individually tracked to determine the number of the cohort, the number of those with the indicated goals who earn an AA/AS degree or Certificate at any Peralta CCD college, and the number who, regardless of goal, earn an AA/AS degree or Certificate at any Peralta CCD college within the indicated number of years.

Laney College



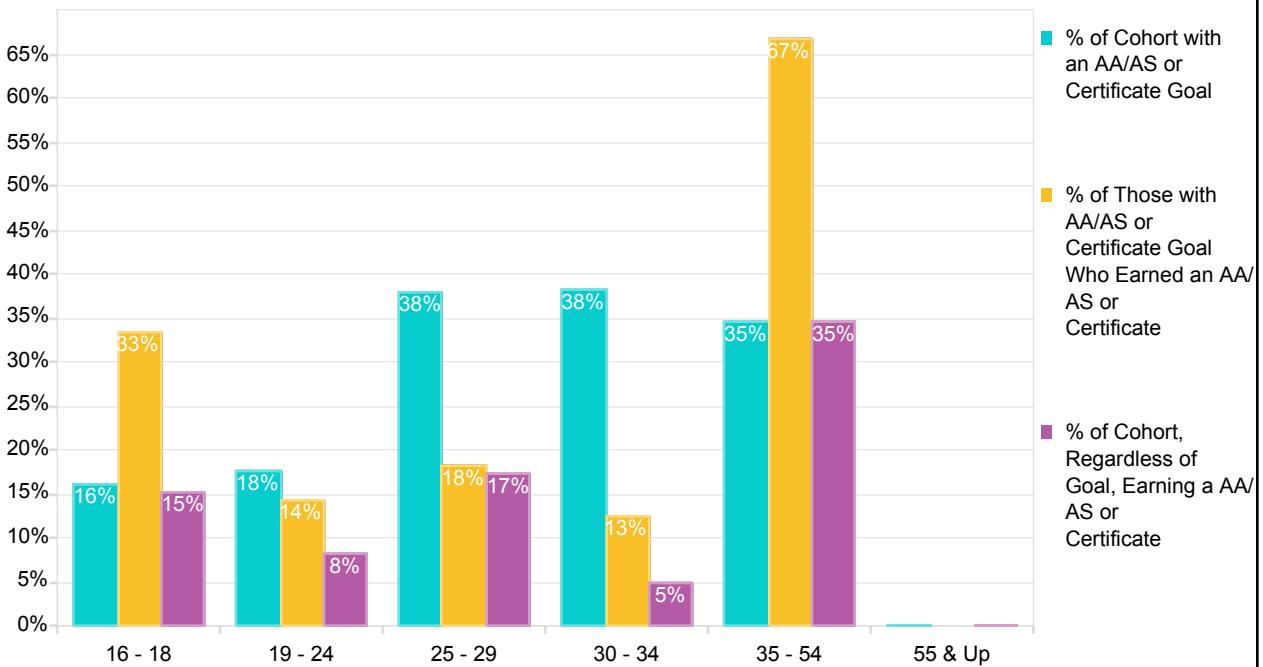
Count and Percentage Tracking of the Fall 2003 Matriculated First-Time College Cohort for AA/AS Degree or Certificate Goals and AA/AS or Certificate Awards within Six Years by Ethnicity

Ethnicity	Count of Fall Cohort	Count of Cohort with AA/AS or Certificate Goal	Percent of Cohort with AA/AS or Certificate Goal	Count of Cohort with AA/AS or Certificate Goal Who Earned an AA/AS or Certificate	Percent of Those with AA/AS or Certificate Goal Who Earned an AA/AS or Certificate	Count of Cohort, Regardless of Goal, Earning a Degree or Certificate	Percent of Cohort, Regardless of Goal, Earning a Degree or Certificate
African-Am	56	11	20%	3	27%	10	18%
Asian/PI	160	26	16%	11	42%	27	17%
Filipino	7	3	43%	0	0%	0	0%
Latino	31	6	19%	0	0%	1	3%
Native Am	1	0	0%	0	0%	0	0%
Other/Unkw	17	4	24%	1	25%	1	6%
White	38	17	45%	3	18%	3	8%
Totals	310	67	22%	18	27%	42	14%

Note: The cohort consists of Fall students enrolled at census with an Enrollment Status of "First-Time College" and with a Matriculation Status of "Matriculated." The student's goal is the Informed or Matriculation Goal with values of 1, 3, 4, or 5, i.e., the goals of Transfer with an AA/AS, AA/AS General Education, AA/AS Vocational, or Certificate. Students are individually tracked to determine the number of the cohort, the number of those with the indicated goals who earn an AA/AS degree or Certificate at any Peralta CCD college, and the number who, regardless of goal, earn an AA/AS degree or Certificate at any Peralta CCD college within the indicated number of years.

Laney College

Percentages of the Fall 2003 First-Time College Cohort with AA/AS or Certificate Goals, Those with Goals Earning an Award, and Those Earning an Award Regardless of Goal within Six Years by Age Group



Count and Percentage Tracking of the Fall 2003 Matriculated First-Time College Cohort for AA/AS Degree or Certificate Goals and AA/AS or Certificate Awards within Six Years by Age Group

Age Group	Count of Fall Cohort	Count of Cohort with AA/AS or Certificate Goal	Percent of Cohort with AA/AS or Certificate Goal	Count of Cohort with AA/AS or Certificate Goal Who Earned an AA/AS or Certificate	Percent of Those with AA/AS or Certificate Goal Who Earned an AA/AS or Certificate	Count of Cohort, Regardless of Goal, Earning a Degree or Certificate	Percent of Cohort, Regardless of Goal, Earning a Degree or Certificate
16 - 18	112	18	16%	6	33%	17	15%
19 - 24	120	21	18%	3	14%	10	8%
25 - 29	29	11	38%	2	18%	5	17%
30 - 34	21	8	38%	1	13%	1	5%
35 - 54	26	9	35%	6	67%	9	35%
55 & Up	2	0	0%	0	0%	0	0%
Totals	310	67	22%	18	27%	42	14%

Note: The cohort consists of Fall students enrolled at census with an Enrollment Status of "First-Time College" and with a Matriculation Status of "Matriculated." The student's goal is the Informed or Matriculation Goal with values of 1, 3, 4, or 5, i.e., the goals of Transfer with an AA/AS, AA/AS General Education, AA/AS Vocational, or Certificate. Students are individually tracked to determine the number of the cohort, the number of those with the indicated goals who earn an AA/AS degree or Certificate at any Peralta CCD college, and the number who, regardless of goal, earn an AA/AS degree or Certificate at any Peralta CCD college within the indicated number of years.