



Peralta Facts

Student Outcomes

Merritt College

March 2010

Peralta Community College District
Office of Institutional Research

Peralta Facts Student Outcomes

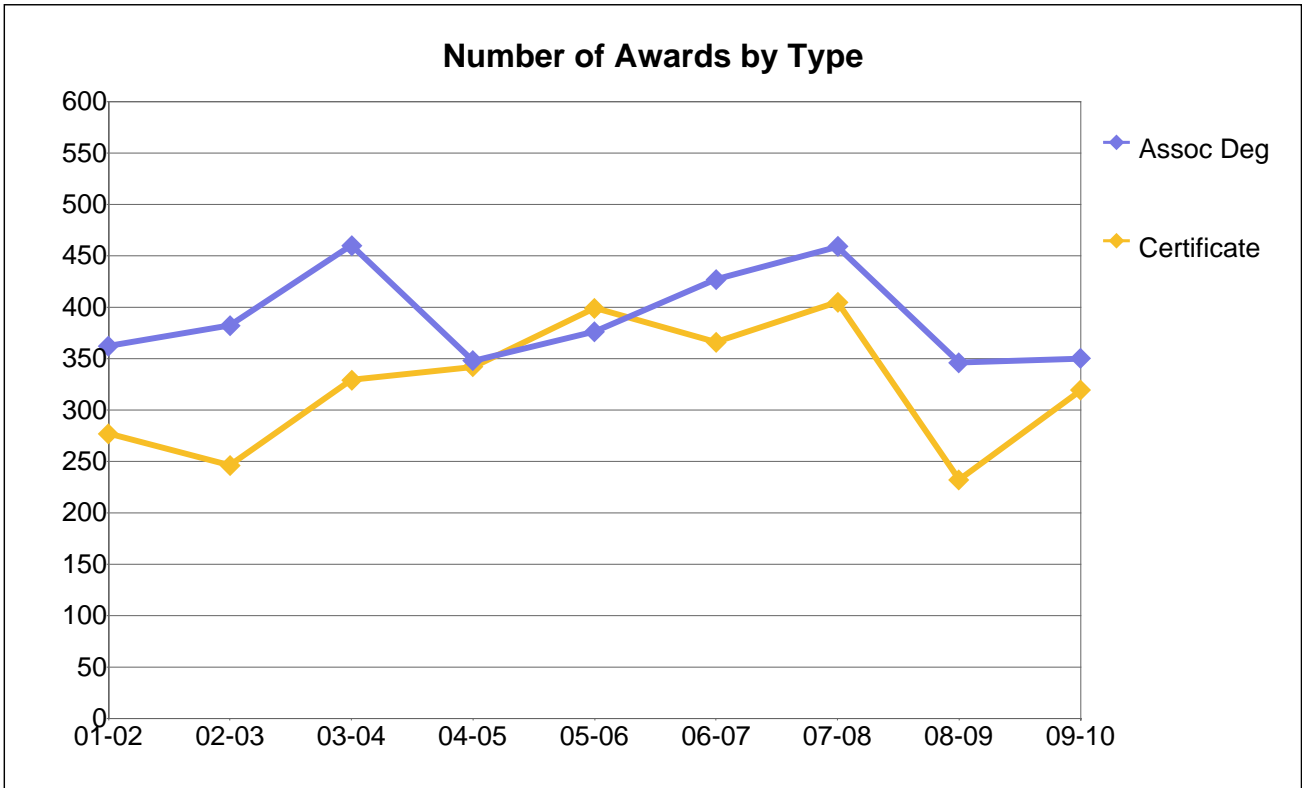
Peralta Community College District

Table of Contents

Number of Awards by Type (Degrees and Certificates).....	1
Number of Associate Degrees by Gender.....	2
Number of Associate Degrees by Ethnicity.....	3
Number of Associate Degrees by Age Group.....	4
Number of Certificates by Gender.....	5
Number of Certificates by Ethnicity.....	6
Number of Certificates by Age Group.....	7
Number of Transfers to CSU and UC by Year.....	8
Number of Transfers to UC by Ethnicity.....	9
Number of Transfer to CSU by Ethnicity.....	10
Fall Grade Frequency and Percentage Distribution by Year.....	11
Fall Course Success Rate by All Students.....	12
Fall Course Success Rate by Gender.....	13
Fall Course Success Rates by Ethnicity.....	14
Fall Course Success Rates by Age Group.....	15
Fall Course Retention Rates by Ethnicity.....	16
Fall to Spring Persistence Counts and Rates by All Students.....	17
Fall to Spring Persistence Counts and Rates by Gender.....	18
Fall to Spring Persistence Counts and Rates by Ethnicity.....	19
Fall to Spring Persistence Counts and Rates by Age Group.....	20
Tracking of Fall First-time Cohorts by Goal and Completion.....	21

Tracking of Fall 2003 First-time Cohorts by Goal and Completion by Gender	22
Tracking of Fall 2003 First-time Cohorts by Goal and Completion by Ethnicity.....	23
Tracking of Fall 2003 First-time Cohorts by Goal and Completion by Age Group	24

Merritt College



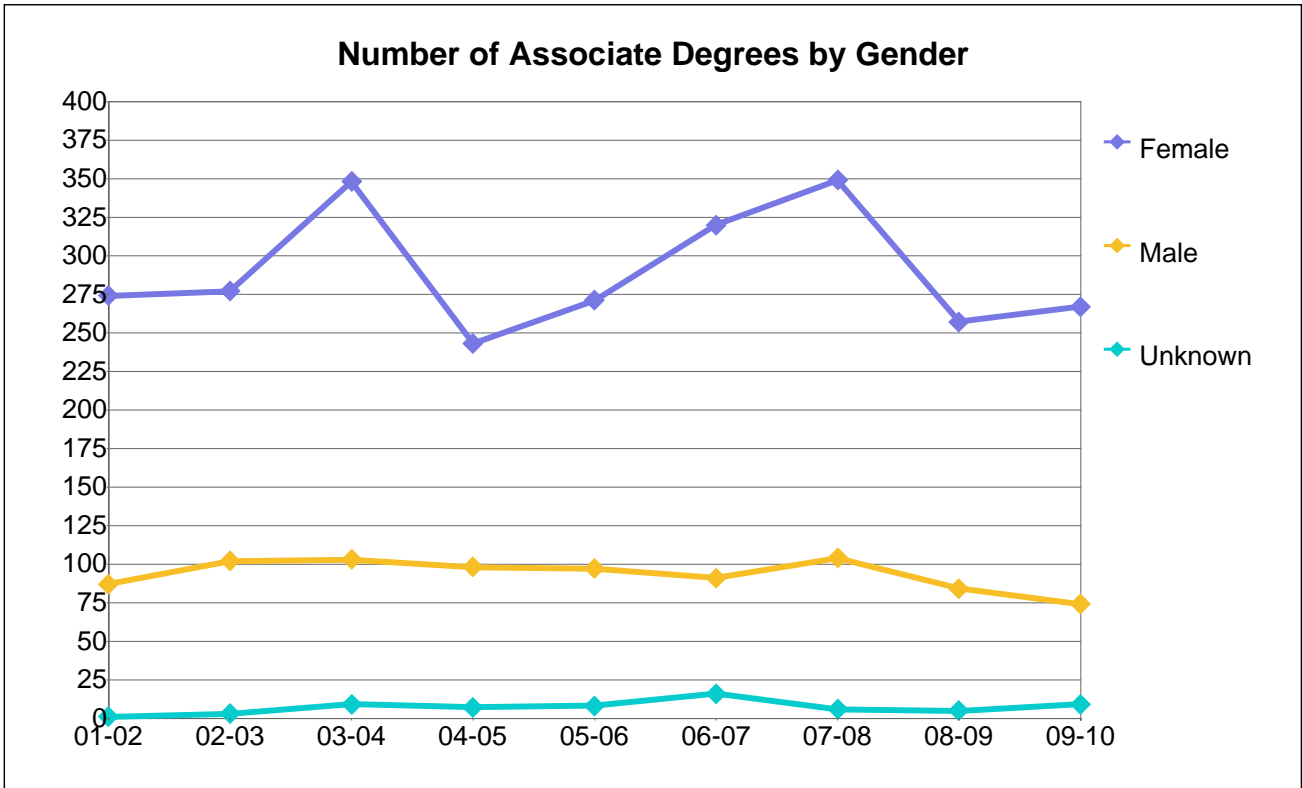
Number of Awards by Type

Deg or Cert	01-02	02-03	03-04	04-05	05-06	06-07	07-08	08-09	09-10
Assoc Deg	362	382	460	348	376	427	459	346	350
Certificate	277	246	329	342	399	366	405	232	319
Total	639	628	789	690	775	793	864	578	669

Percentage Distribution of Awards by Type

Deg or Cert	01-02	02-03	03-04	04-05	05-06	06-07	07-08	08-09	09-10
Assoc Deg	57%	61%	58%	50%	49%	54%	53%	60%	52%
Certificate	43%	39%	42%	50%	51%	46%	47%	40%	48%
Total	100%	100%	100%	100%	100%	100%	100%	100%	100%

Merritt College



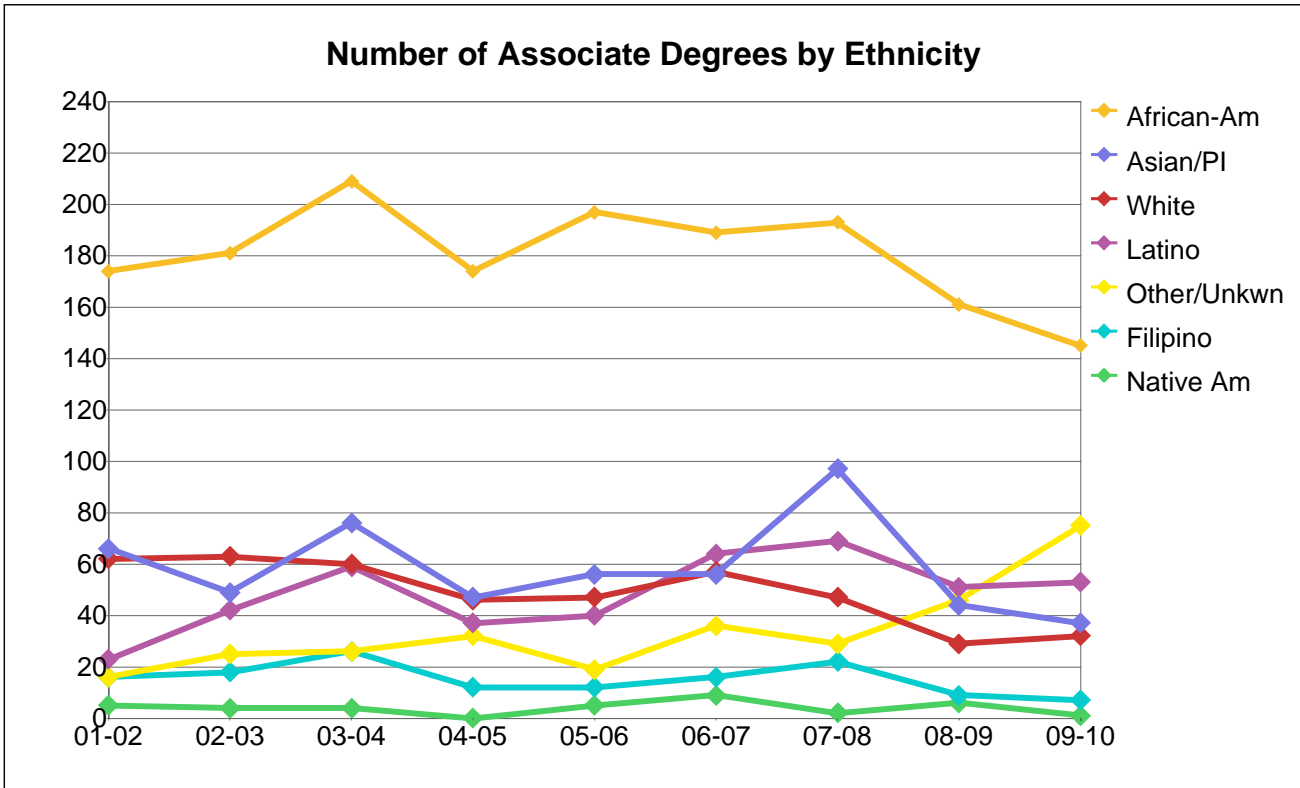
Number of Associate Degrees by Gender

Gender	01-02	02-03	03-04	04-05	05-06	06-07	07-08	08-09	09-10
Female	274	277	348	243	271	320	349	257	267
Male	87	102	103	98	97	91	104	84	74
Unknown	1	3	9	7	8	16	6	5	9
Total	362	382	460	348	376	427	459	346	350

Percentage Distribution of Associate Degrees by Gender

Gender	01-02	02-03	03-04	04-05	05-06	06-07	07-08	08-09	09-10
Female	76%	73%	76%	70%	72%	75%	76%	74%	76%
Male	24%	27%	22%	28%	26%	21%	23%	24%	21%
Unknown	0%	1%	2%	2%	2%	4%	1%	1%	3%
Total	100%	100%	100%	100%	100%	100%	100%	100%	100%

Merritt College



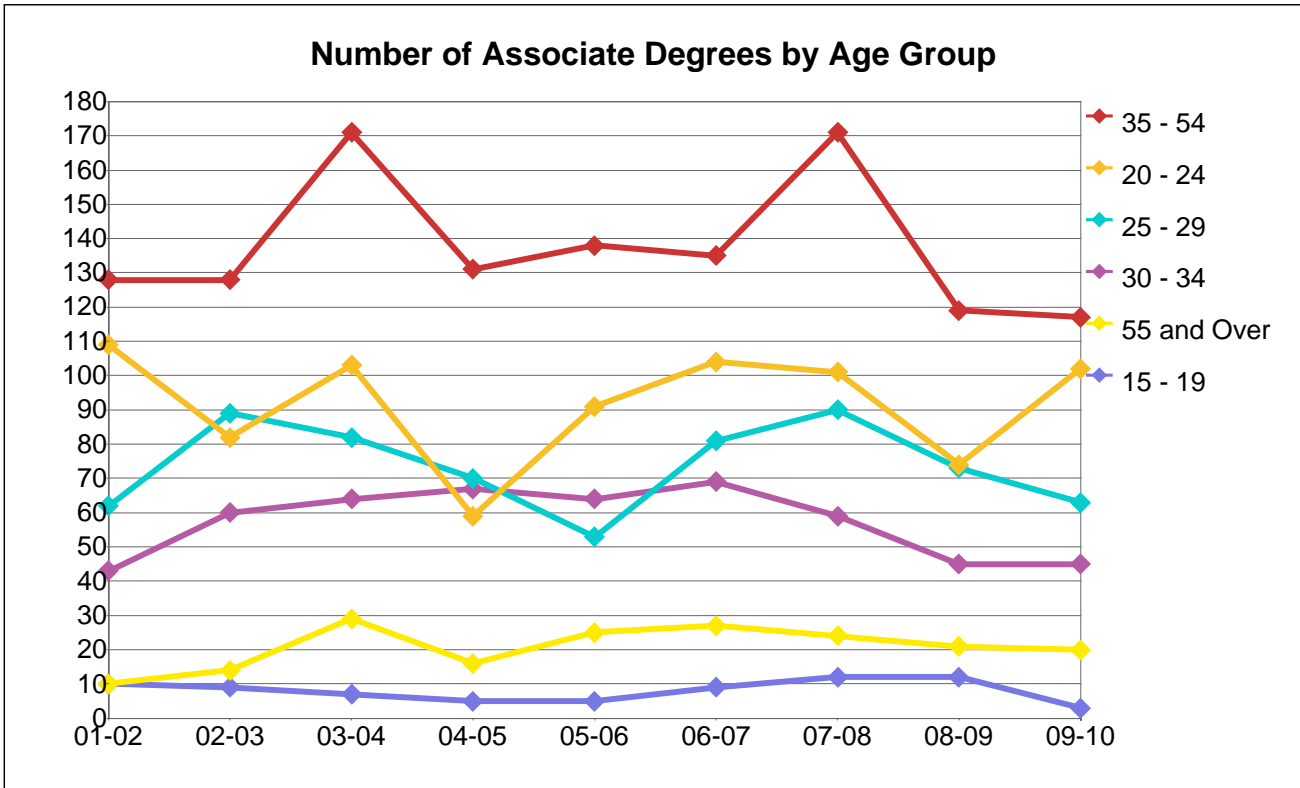
Number of Associate Degrees by Ethnicity

Ethnicity	01-02	02-03	03-04	04-05	05-06	06-07	07-08	08-09	09-10
African-Am	174	181	209	174	197	189	193	161	145
Asian/PI	66	49	76	47	56	56	97	44	37
Filipino	16	18	26	12	12	16	22	9	7
Latino	23	42	59	37	40	64	69	51	53
Native Am	5	4	4		5	9	2	6	1
Other/Unkwn	16	25	26	32	19	36	29	46	75
White	62	63	60	46	47	57	47	29	32
Total	362	382	460	348	376	427	459	346	350

Percentage Distribution of Associate Degrees by Ethnicity

Ethnicity	01-02	02-03	03-04	04-05	05-06	06-07	07-08	08-09	09-10
African-Am	48%	47%	45%	50%	52%	44%	42%	47%	41%
Asian/PI	18%	13%	17%	14%	15%	13%	21%	13%	11%
Filipino	4%	5%	6%	3%	3%	4%	5%	3%	2%
Latino	6%	11%	13%	11%	11%	15%	15%	15%	15%
Native Am	1%	1%	1%		1%	2%	0%	2%	0%
Other/Unkwn	4%	7%	6%	9%	5%	8%	6%	13%	21%
White	17%	16%	13%	13%	13%	13%	10%	8%	9%
Total	100%	100%	100%	100%	100%	100%	100%	100%	100%

Merritt College



Number of Associate Degrees by Age Group

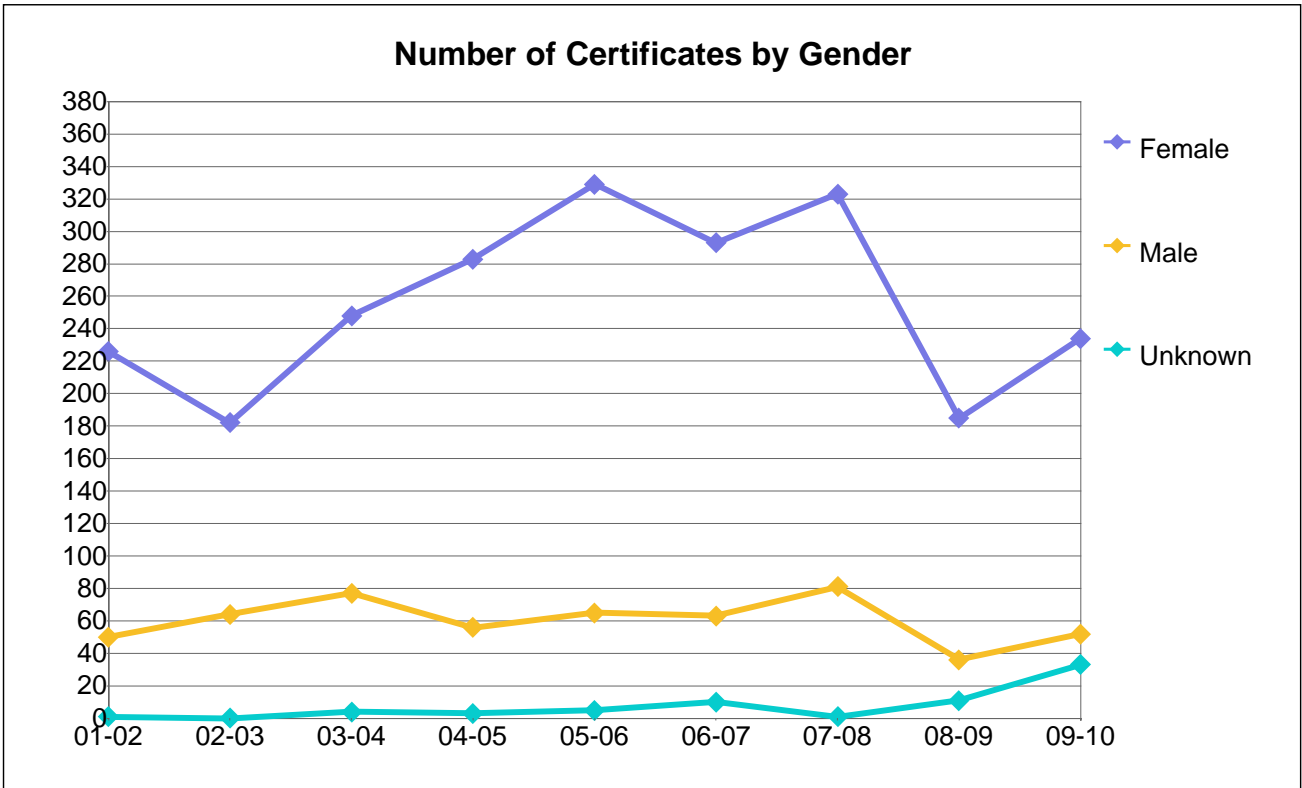
Age Group	01-02	02-03	03-04	04-05	05-06	06-07	07-08	08-09	09-10
15 - 19	10	9	7	5	5	9	12	12	3
20 - 24	109	82	103	59	91	104	101	74	102
25 - 29	62	89	82	70	53	81	90	73	63
30 - 34	43	60	64	67	64	69	59	45	45
35 - 54	128	128	171	131	138	135	171	119	117
55 and Ove	10	14	29	16	25	27	24	21	20
Unkwn	0		4			2	2	2	
Total	362	382	460	348	376	427	459	346	350

Percentage Distribution of Associate Degrees by Age Group

Age Group	01-02	02-03	03-04	04-05	05-06	06-07	07-08	08-09	09-10
15 - 19	3%	2%	2%	1%	1%	2%	3%	3%	1%
20 - 24	30%	21%	22%	17%	24%	24%	22%	21%	29%
25 - 29	17%	23%	18%	20%	14%	19%	20%	21%	18%
30 - 34	12%	16%	14%	19%	17%	16%	13%	13%	13%
35 - 54	35%	34%	37%	38%	37%	32%	37%	34%	33%
55 and Over	3%	4%	6%	5%	7%	6%	5%	6%	6%
Unkwn	0%		1%			0%	0%	1%	
Total	100%	100%	100%	100%	100%	100%	100%	100%	100%

Note: Age as of 12/15 of the award year.

Merritt College



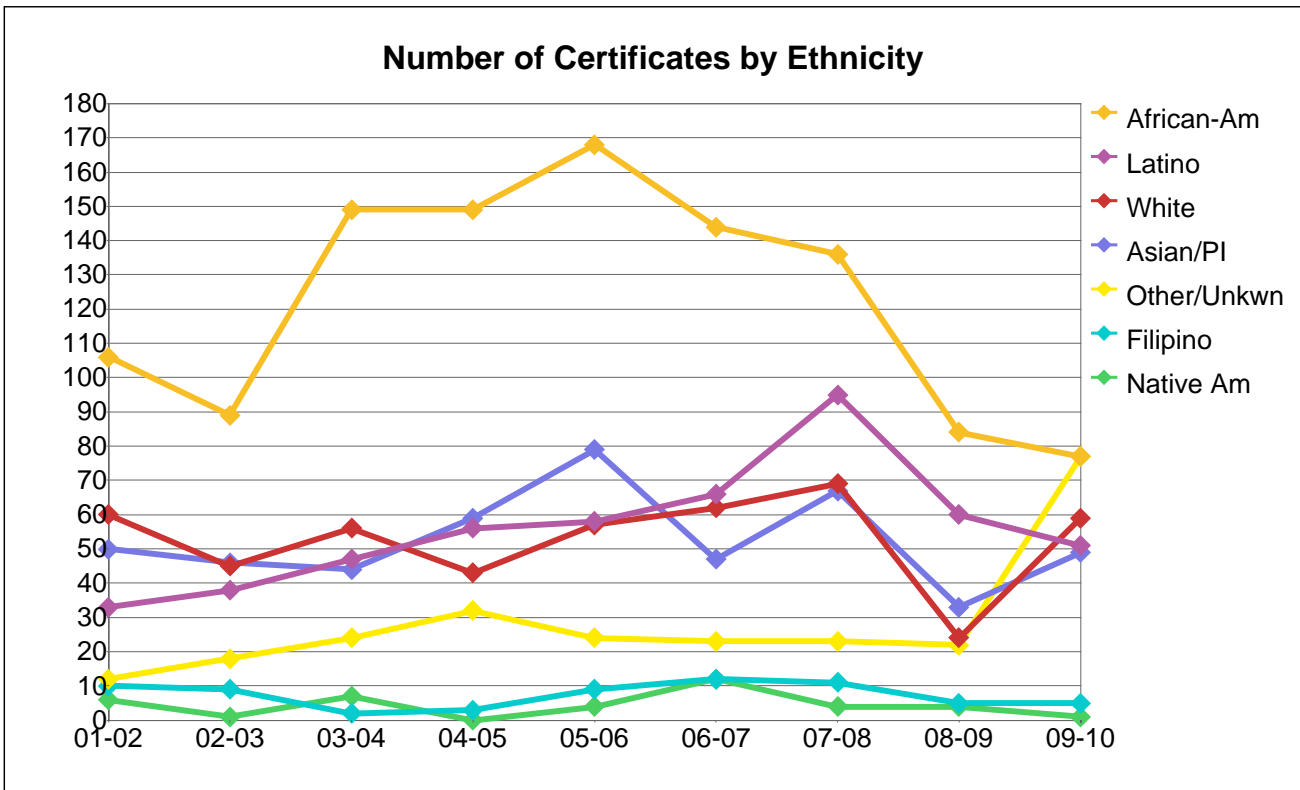
Number of Certificates by Gender

Gender	01-02	02-03	03-04	04-05	05-06	06-07	07-08	08-09	09-10
Female	226	182	248	283	329	293	323	185	234
Male	50	64	77	56	65	63	81	36	52
Unknown	1	0	4	3	5	10	1	11	33
Total	277	246	329	342	399	366	405	232	319

Percentage Distribution of Certificates by Gender

Gender	01-02	02-03	03-04	04-05	05-06	06-07	07-08	08-09	09-10
Female	82%	74%	75%	83%	82%	80%	80%	80%	73%
Male	18%	26%	23%	16%	16%	17%	20%	16%	16%
Unknown	0%	0%	1%	1%	1%	3%	0%	5%	10%
Total	100%	100%	100%	100%	100%	100%	100%	100%	100%

Merritt College



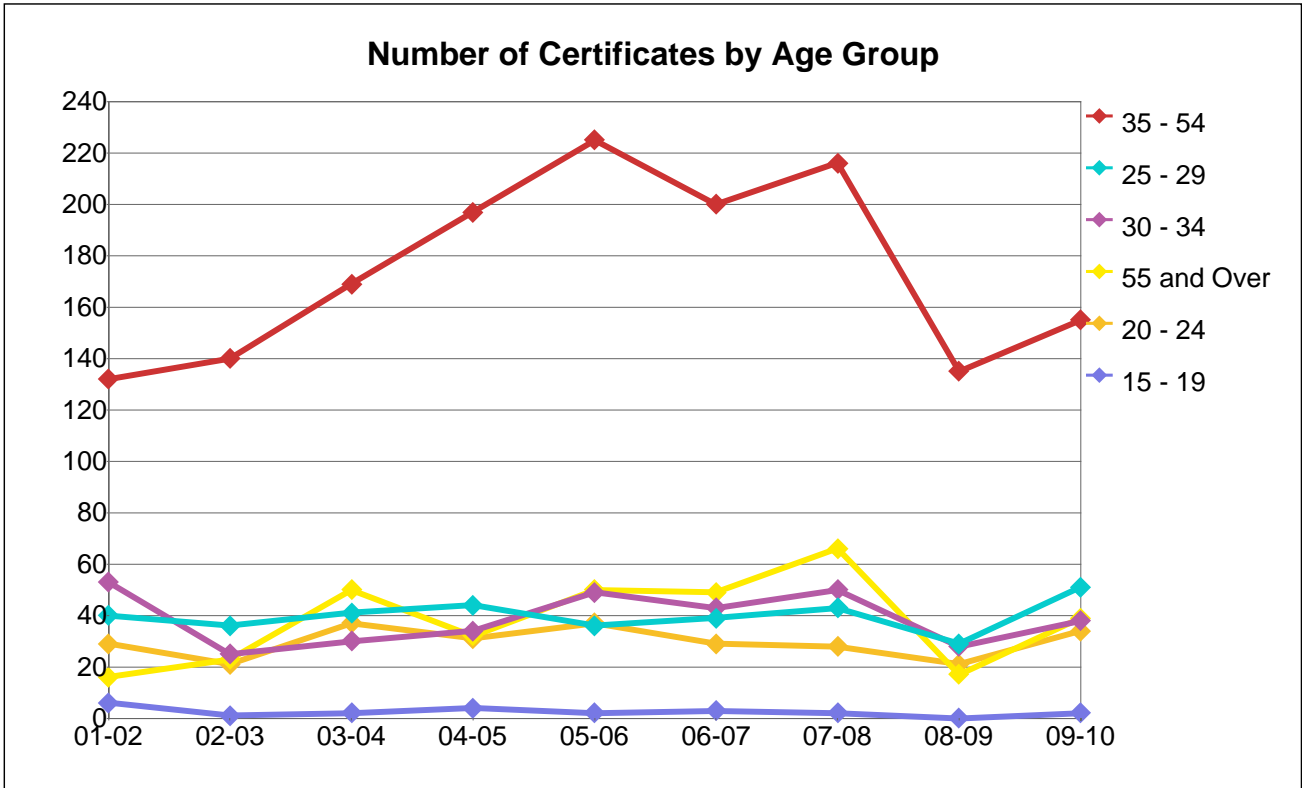
Number of Certificates by Ethnicity

Ethnicity	01-02	02-03	03-04	04-05	05-06	06-07	07-08	08-09	09-10
African-Am	106	89	149	149	168	144	136	84	77
Asian/PI	50	46	44	59	79	47	67	33	49
Filipino	10	9	2	3	9	12	11	5	5
Latino	33	38	47	56	58	66	95	60	51
Native Am	6	1	7		4	12	4	4	1
Other/Unkwn	12	18	24	32	24	23	23	22	77
White	60	45	56	43	57	62	69	24	59
Total	277	246	329	342	399	366	405	232	319

Percentage Distribution of Certificates by Ethnicity

Ethnicity	01-02	02-03	03-04	04-05	05-06	06-07	07-08	08-09	09-10
African-Am	38%	36%	45%	44%	42%	39%	34%	36%	24%
Asian/PI	18%	19%	13%	17%	20%	13%	17%	14%	15%
Filipino	4%	4%	1%	1%	2%	3%	3%	2%	2%
Latino	12%	15%	14%	16%	15%	18%	23%	26%	16%
Native Am	2%	0%	2%		1%	3%	1%	2%	0%
Other/Unkwn	4%	7%	7%	9%	6%	6%	6%	9%	24%
White	22%	18%	17%	13%	14%	17%	17%	10%	18%
Total	100%	100%	100%	100%	100%	100%	100%	100%	100%

Merritt College



Number of Certificates by Age Group

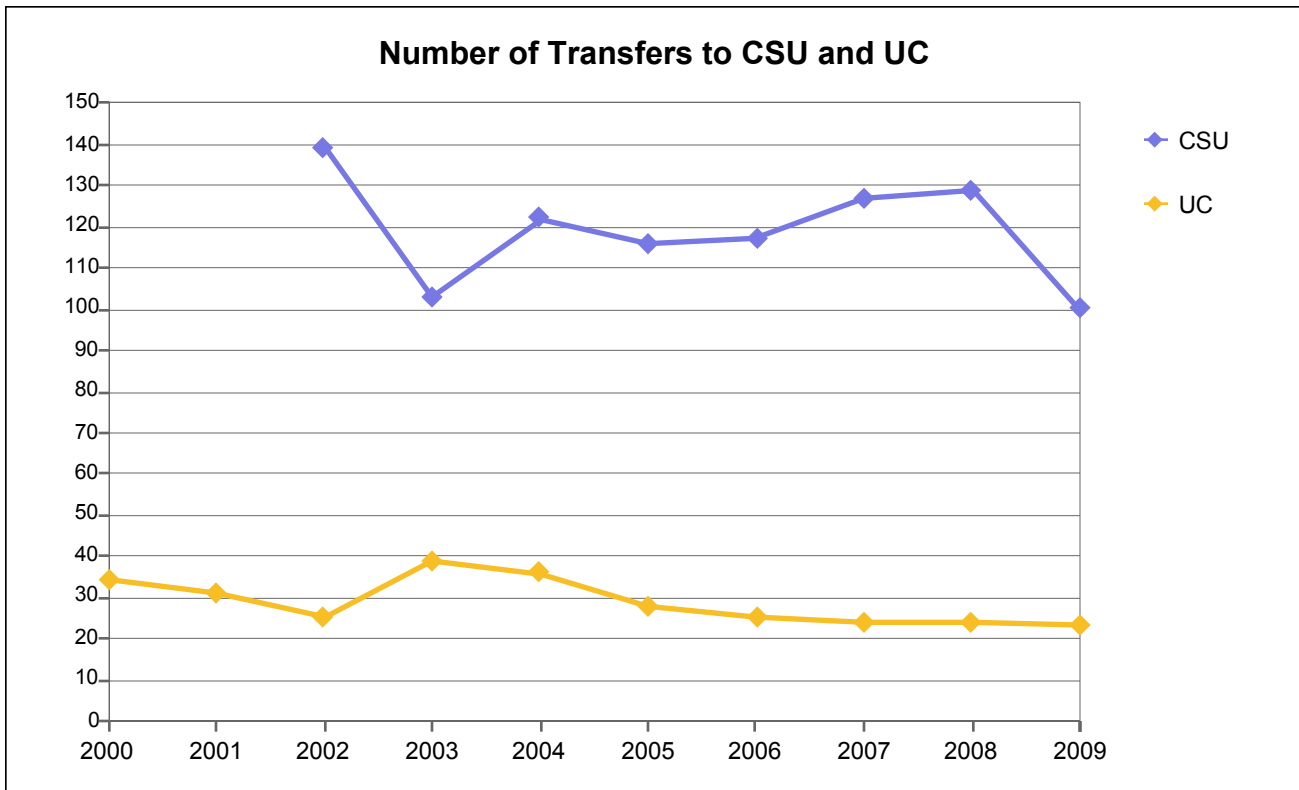
Age Group	01-02	02-03	03-04	04-05	05-06	06-07	07-08	08-09	09-10
15 - 19	6	1	2	4	2	3	2	0	2
20 - 24	29	21	37	31	37	29	28	21	34
25 - 29	40	36	41	44	36	39	43	29	51
30 - 34	53	25	30	34	49	43	50	28	38
35 - 54	132	140	169	197	225	200	216	135	155
55 and Ove	16	23	50	32	50	49	66	17	39
Unkwn	1		0			3	0	2	
Total	277	246	329	342	399	366	405	232	319

Percentage Distribution of Certificates by Age Group

Age Group	01-02	02-03	03-04	04-05	05-06	06-07	07-08	08-09	09-10
15 - 19	2%	0%	1%	1%	1%	1%	0%	0%	1%
20 - 24	10%	9%	11%	9%	9%	8%	7%	9%	11%
25 - 29	14%	15%	12%	13%	9%	11%	11%	13%	16%
30 - 34	19%	10%	9%	10%	12%	12%	12%	12%	12%
35 - 54	48%	57%	51%	58%	56%	55%	53%	58%	49%
55 and Ove	6%	9%	15%	9%	13%	13%	16%	7%	12%
Unkwn	0%		0%			1%	0%	1%	
Total	100%	100%	100%	100%	100%	100%	100%	100%	100%

Note: Age as of 12/15 of the award year.

Merritt College



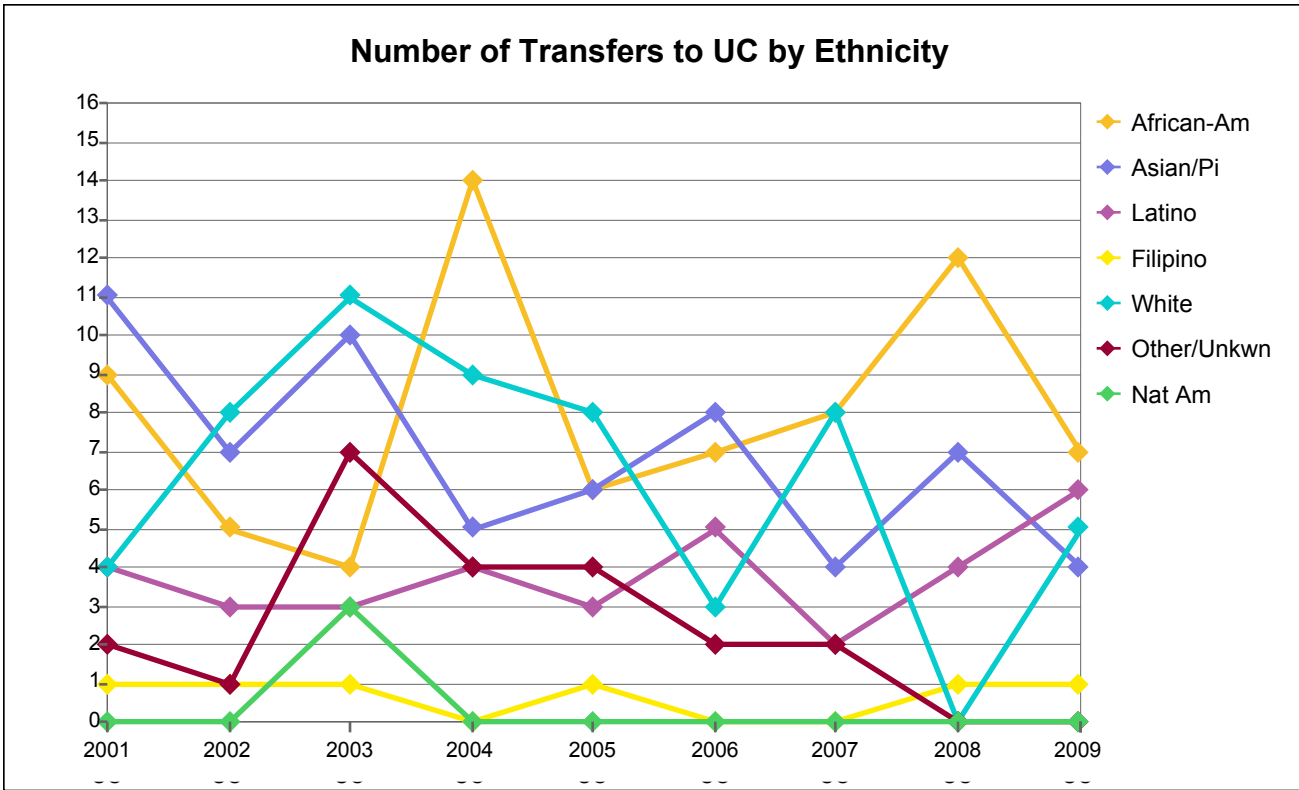
Number of Transfers to CSU and UC

System	2000	2001	2002	2003	2004	2005	2006	2007	2008
CSU			139	103	122	116	117	127	129
UC	34	31	25	39	36	28	25	24	24
Total	34	31	164	142	158	144	142	151	153

Percentage Distribution of Transfers to CSU and UC

System	2000	2001	2002	2003	2004	2005	2006	2007	2008
CSU			85%	73%	77%	81%	82%	84%	84%
UC	100%	100%	15%	27%	23%	19%	18%	16%	16%
Total	100%	100%	100%	100%	100%	100%	100%	100%	100%

Merritt College



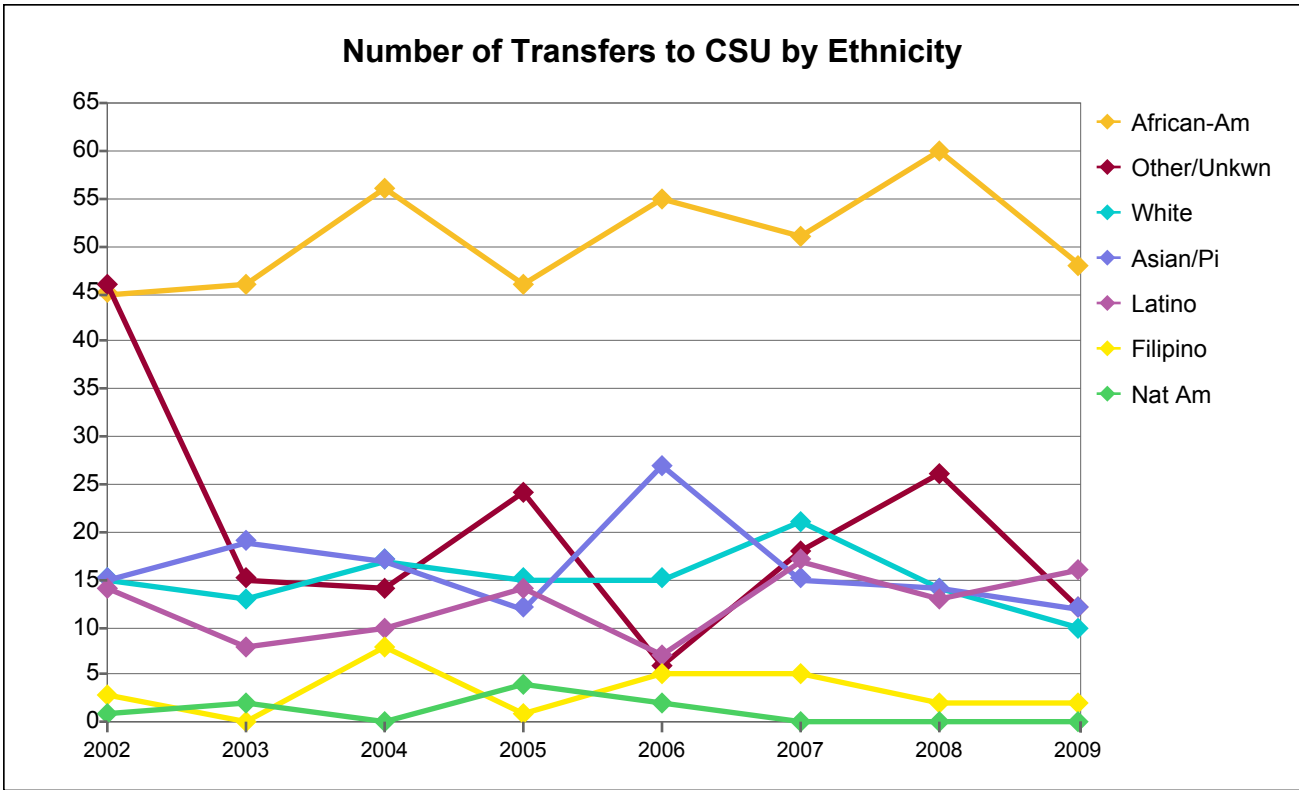
Number of UC Transfers by Ethnicity

Academic Yr Ending	Asian/Pi	African-Am	Filipino	Latino	Nat Am	White	Other/Unk	Totals
2001	11	9	1	4	0	4	2	31
2002	7	5	1	3	0	8	1	25
2003	10	4	1	3	3	11	7	39
2004	5	14	0	4	0	9	4	36
2005	6	6	1	3	0	8	4	28
2006	8	7	0	5	0	3	2	25
2007	4	8	0	2	0	8	2	24
2008	7	12	1	4	0	0	0	24
2009	4	7	1	6	0	5	0	23

Percentage Distribution of UC Transfers by Ethnicity

Academic Yr Ending	Asian/Pi	African-Am	Filipino	Latino	Nat Am	White	Other/Unk	Total
2001	35%	29%	3%	13%	0%	13%	6%	100%
2002	28%	20%	4%	12%	0%	32%	4%	100%
2003	26%	10%	3%	8%	8%	28%	18%	100%
2004	14%	39%	0%	11%	0%	25%	11%	100%
2005	21%	21%	4%	11%	0%	29%	14%	100%
2006	32%	28%	0%	20%	0%	12%	8%	100%
2007	17%	33%	0%	8%	0%	33%	8%	100%
2008	29%	50%	4%	17%	0%	0%	0%	100%
2009	17%	30%	4%	26%	0%	22%	0%	100%

Merritt College



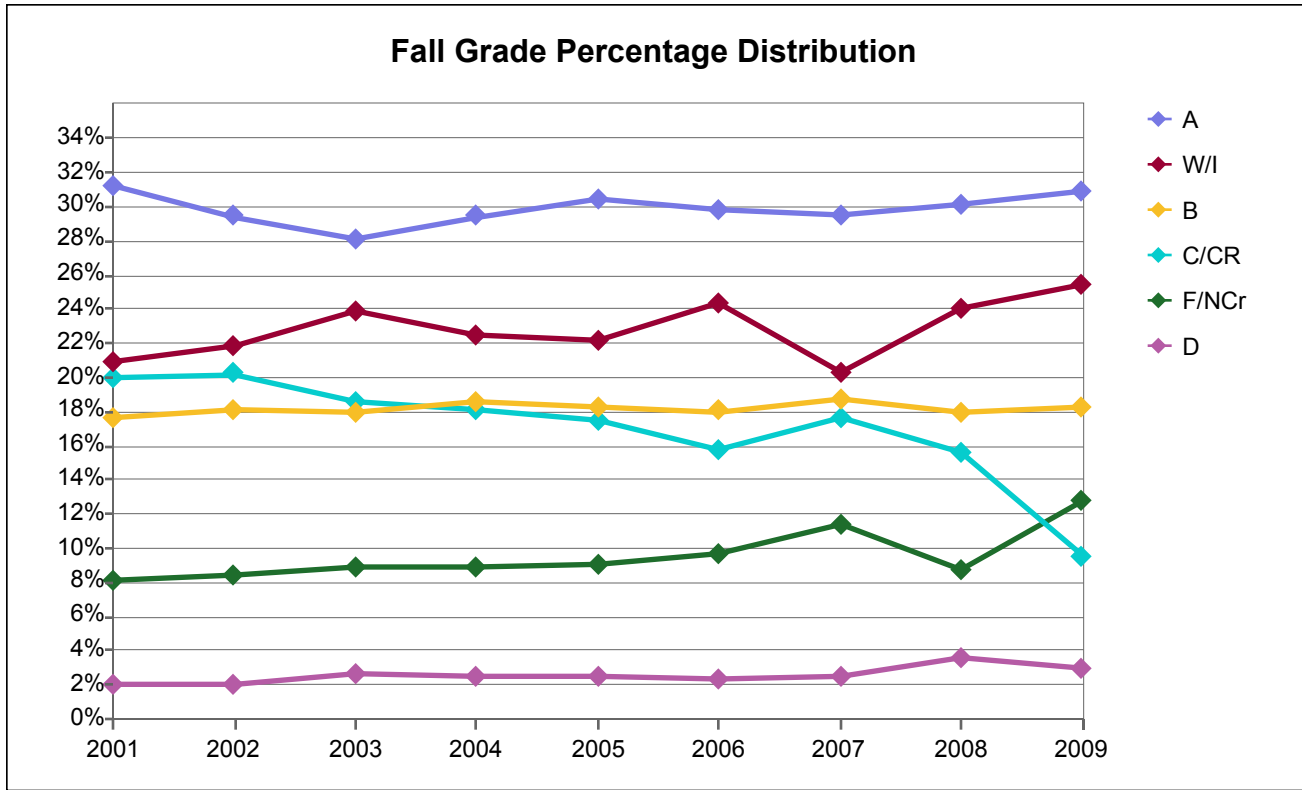
Number of CSU Transfers by Ethnicity

Academic Yr Ending	Asian/PI	African-Am	Filipino	Latino	Nat Am	White	Other/Unk	Totals
2002	15	45	3	14	1	15	46	139
2003	19	46	0	8	2	13	15	103
2004	17	56	8	10	0	17	14	122
2005	12	46	1	14	4	15	24	116
2006	27	55	5	7	2	15	6	117
2007	15	51	5	17	0	21	18	127
2008	14	60	2	13	0	14	26	129
2009	12	48	2	16	0	10	12	100

Percentage Distribution of CSU Transfers by Ethnicity

Academic Yr Ending	Asian/PI	African-Am	Filipino	Latino	Nat Am	White	Other/Unk	Total
2002	11%	32%	2%	10%	1%	11%	33%	100%
2003	18%	45%	0%	8%	2%	13%	15%	100%
2004	14%	46%	7%	8%	0%	14%	11%	100%
2005	10%	40%	1%	12%	3%	13%	21%	100%
2006	23%	47%	4%	6%	2%	13%	5%	100%
2007	12%	40%	4%	13%	0%	17%	14%	100%
2008	11%	47%	2%	10%	0%	11%	20%	100%
2009	12%	48%	2%	16%	0%	10%	12%	100%

Merritt College



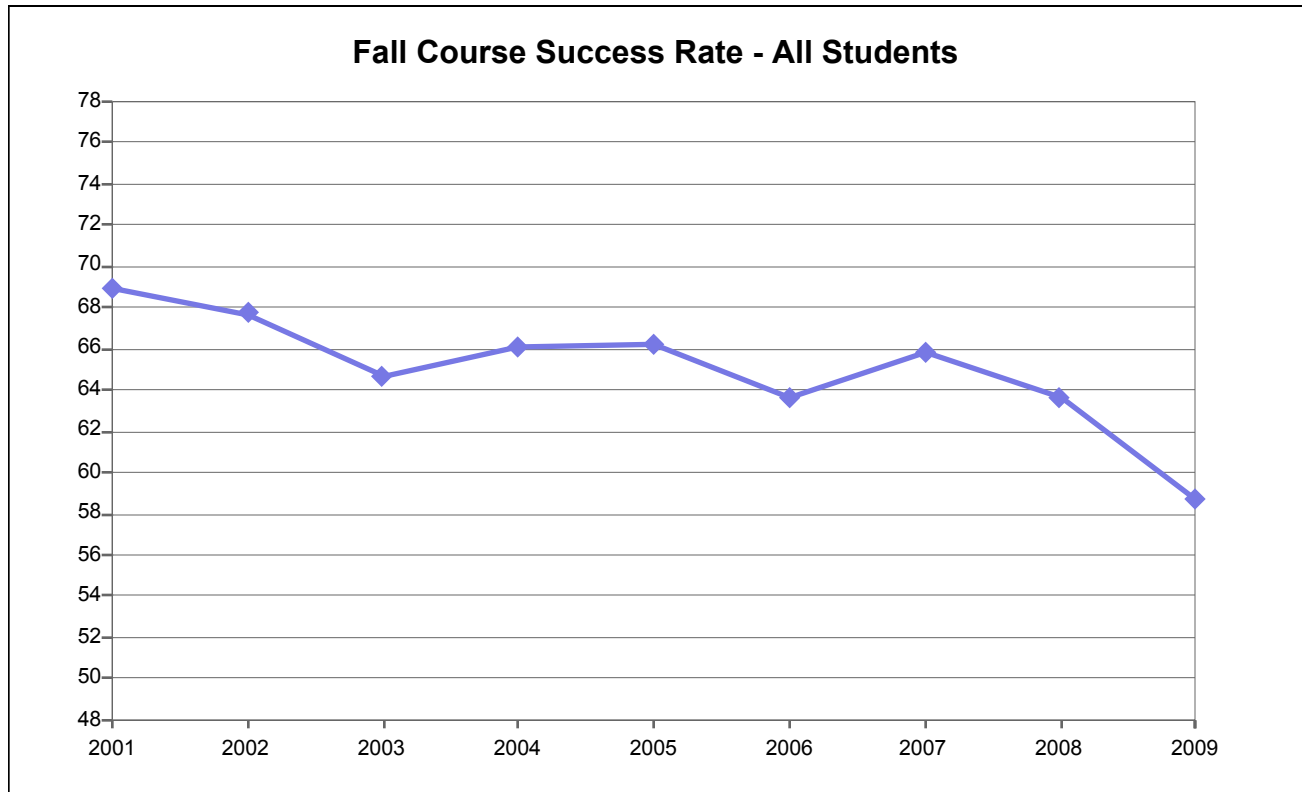
Fall Grade Frequency Distribution

Grade	2001	2002	2003	2004	2005	2006	2007	2008	2009
A	4,179	4,351	4,374	4,266	4,313	4,431	4,193	4,345	4,573
B	2,370	2,677	2,809	2,701	2,590	2,683	2,667	2,581	2,706
C	1,461	1,692	1,684	1,635	1,567	1,514	1,520	2,202	1,412
CR	1,204	1,298	1,201	989	910	829	984	35	1
D	262	299	405	364	347	353	349	513	447
F	267	410	434	417	388	511	625	954	1,492
I	268	262	301	257	222	252	257	533	1,117
NCr	825	839	944	874	900	920	996	308	397
W	2,538	2,968	3,424	3,004	2,928	3,373	2,644	2,919	2,646
Total	13,374	14,796	15,576	14,507	14,165	14,866	14,235	14,390	14,791

Fall Grade Percentage Distribution

Grade	2001	2002	2003	2004	2005	2006	2007	2008	2009
A	31%	29%	28%	29%	30%	30%	29%	30%	31%
B	18%	18%	18%	19%	18%	18%	19%	18%	18%
C	11%	11%	11%	11%	11%	10%	11%	15%	10%
CR	9%	9%	8%	7%	6%	6%	7%	0%	0%
D	2%	2%	3%	3%	2%	2%	2%	4%	3%
F	2%	3%	3%	3%	3%	3%	4%	7%	10%
I	2%	2%	2%	2%	2%	2%	2%	4%	8%
NCr	6%	6%	6%	6%	6%	6%	7%	2%	3%
W	19%	20%	22%	21%	21%	23%	19%	20%	18%
% of Column	100%	100%	100%	100%	100%	100%	100%	100%	100%

Merritt College



Number of Fall Total Grades Awarded - All Students

Dimension	2001	2002	2003	2004	2005	2006	2007	2008	2009
All Students	13,374	14,796	15,576	14,507	14,165	14,866	14,235	14,390	14,791

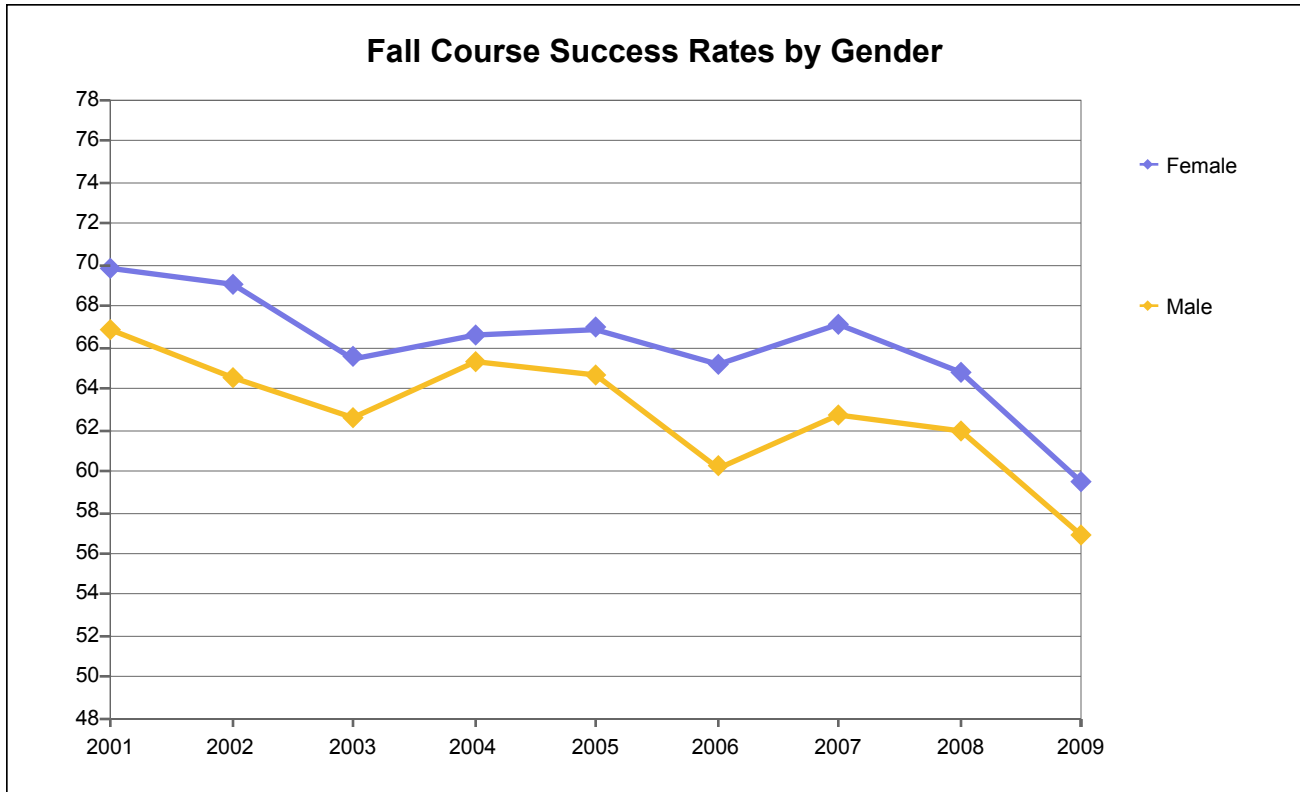
Number of Fall Successful Grades - All Students

Dimension	2001	2002	2003	2004	2005	2006	2007	2008	2009
All Students	9,214	10,018	10,068	9,591	9,380	9,457	9,364	9,163	8,692

Course Success Rates - All Students

Dimension	2001	2002	2003	2004	2005	2006	2007	2008	2009
All Students	69	68	65	66	66	64	66	64	59

Merritt College



Number of Fall Total Grades Awarded by Gender

Gender	2001	2002	2003	2004	2005	2006	2007	2008	2009
Female	8,961	10,134	10,660	9,798	9,696	9,994	9,674	9,209	8,889
Male	4,233	4,464	4,670	4,334	4,212	4,741	4,475	4,451	4,731
Unkwn	180	198	246	375	257	131	86	730	1,171
Total	13,374	14,796	15,576	14,507	14,165	14,866	14,235	14,390	14,791

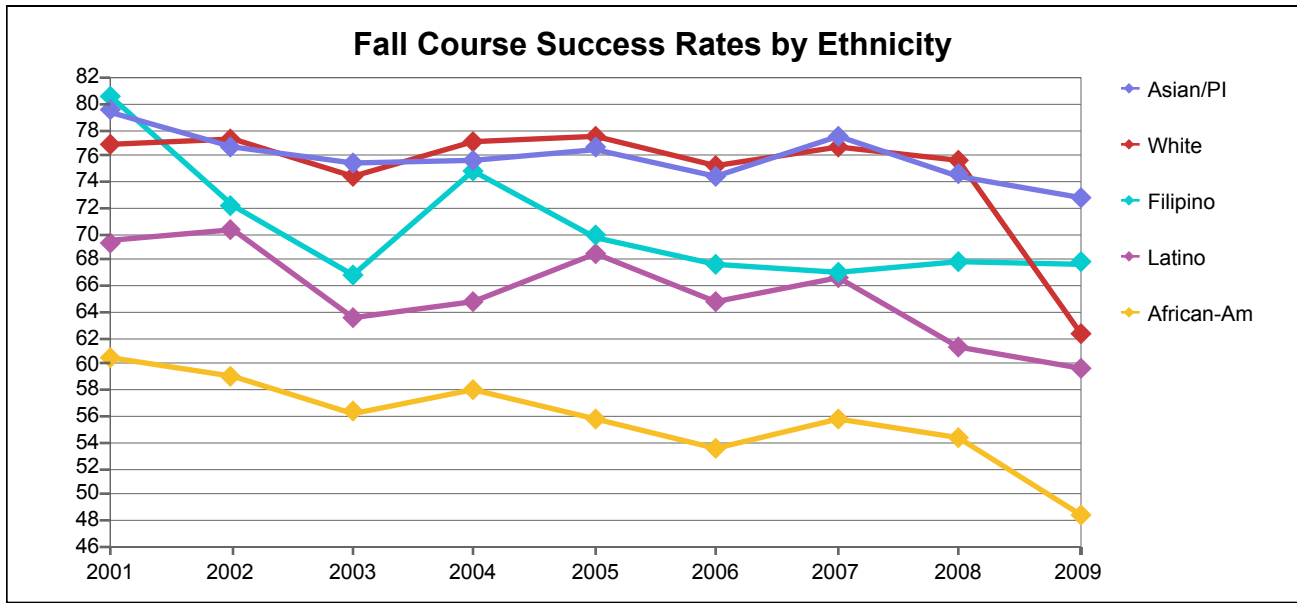
Number of Fall Successful Grades by Gender

Gender	2001	2002	2003	2004	2005	2006	2007	2008	2009
Female	6,259	7,000	6,983	6,522	6,489	6,518	6,495	5,966	5,288
Male	2,831	2,882	2,925	2,831	2,725	2,855	2,808	2,757	2,692
Unkwn	124	136	160	238	166	84	61	440	712
Total	9,214	10,018	10,068	9,591	9,380	9,457	9,364	9,163	8,692

Course Success Rates by Gender

Gender	2001	2002	2003	2004	2005	2006	2007	2008	2009
Female	70	69	66	67	67	65	67	65	59
Male	67	65	63	65	65	60	63	62	57
Unkwn	69	69	65	63	65	64	71	60	61
All Students	69	68	65	66	66	64	66	64	59

Merritt College



Number of Fall Total Grades Awarded by Ethnicity

Ethnicity	2001	2002	2003	2004	2005	2006	2007	2008	2009
African-Am	5,419	6,164	6,609	6,162	5,849	6,212	5,671	5,505	4,118
Asian/PI	1,828	1,981	2,169	2,075	1,978	1,959	1,919	1,922	1,644
Filipino	350	399	518	451	474	474	414	391	276
Latino	1,965	2,116	2,178	1,994	2,079	2,340	2,272	2,444	1,899
Native Am	122	117	109	115	87	125	110	270	176
Other/Unkwn	953	1,060	1,047	1,255	1,154	1,195	1,209	1,340	4,732
White	2,737	2,959	2,946	2,455	2,544	2,561	2,640	2,518	1,946
Total	13,374	14,796	15,576	14,507	14,165	14,866	14,235	14,390	14,791

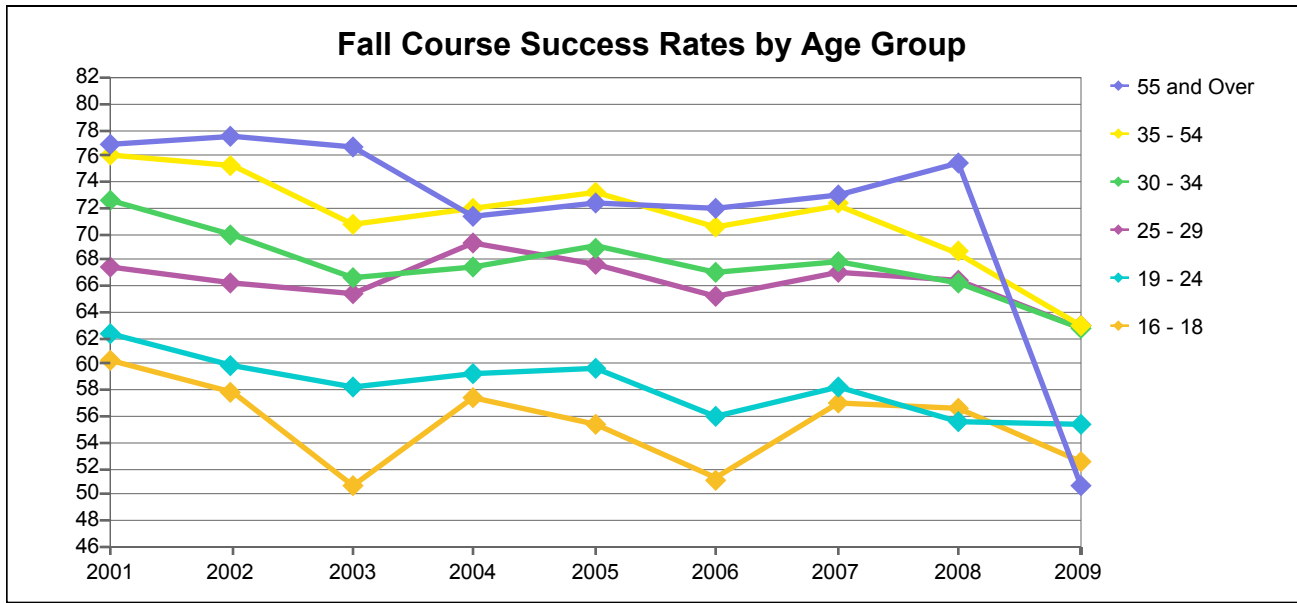
Number of Fall Successful Grades by Ethnicity

Ethnicity	2001	2002	2003	2004	2005	2006	2007	2008	2009
African-Am	3,277	3,642	3,720	3,575	3,267	3,329	3,161	2,993	1,996
Asian/PI	1,452	1,520	1,638	1,572	1,515	1,459	1,486	1,433	1,198
Filipino	282	288	346	338	331	321	278	265	187
Latino	1,364	1,487	1,386	1,293	1,423	1,517	1,515	1,496	1,135
Native Am	80	66	58	70	55	87	55	170	96
Other/Unkwn	653	727	727	852	816	816	846	900	2,868
White	2,106	2,288	2,193	1,891	1,973	1,928	2,023	1,906	1,212
Total	9,214	10,018	10,068	9,591	9,380	9,457	9,364	9,163	8,692

Course Success Rates by Ethnicity

Ethnicity	2001	2002	2003	2004	2005	2006	2007	2008	2009
African-Am	60	59	56	58	56	54	56	54	48
Asian/PI	79	77	76	76	77	74	77	75	73
Filipino	81	72	67	75	70	68	67	68	68
Latino	69	70	64	65	68	65	67	61	60
Native Am	66	56	53	61	63	70	50	63	55
Other/Unkwn	69	69	69	68	71	68	70	67	61
White	77	77	74	77	78	75	77	76	62
All Students	69	68	65	66	66	64	66	64	59

Merritt College



Number of Fall Total Grades Awarded by Age Group

Age Group	2001	2002	2003	2004	2005	2006	2007	2008	2009
Under 16	211	105	24	22	21	107	173	176	129
16 - 18	1,301	1,301	1,212	1,072	1,251	1,292	1,312	1,528	1,476
19 - 24	3,781	4,048	4,655	4,385	4,302	4,473	4,227	4,366	4,920
25 - 29	1,831	2,067	2,165	2,161	2,032	2,152	2,063	2,099	2,267
30 - 34	1,483	1,643	1,690	1,722	1,558	1,500	1,457	1,426	1,469
35 - 54	3,821	4,536	4,802	4,210	4,059	4,227	3,775	3,619	3,460
55 and Over	945	1,094	1,028	935	942	1,115	1,228	1,176	1,070
Total	13,373	14,794	15,576	14,507	14,165	14,866	14,235	14,390	14,791

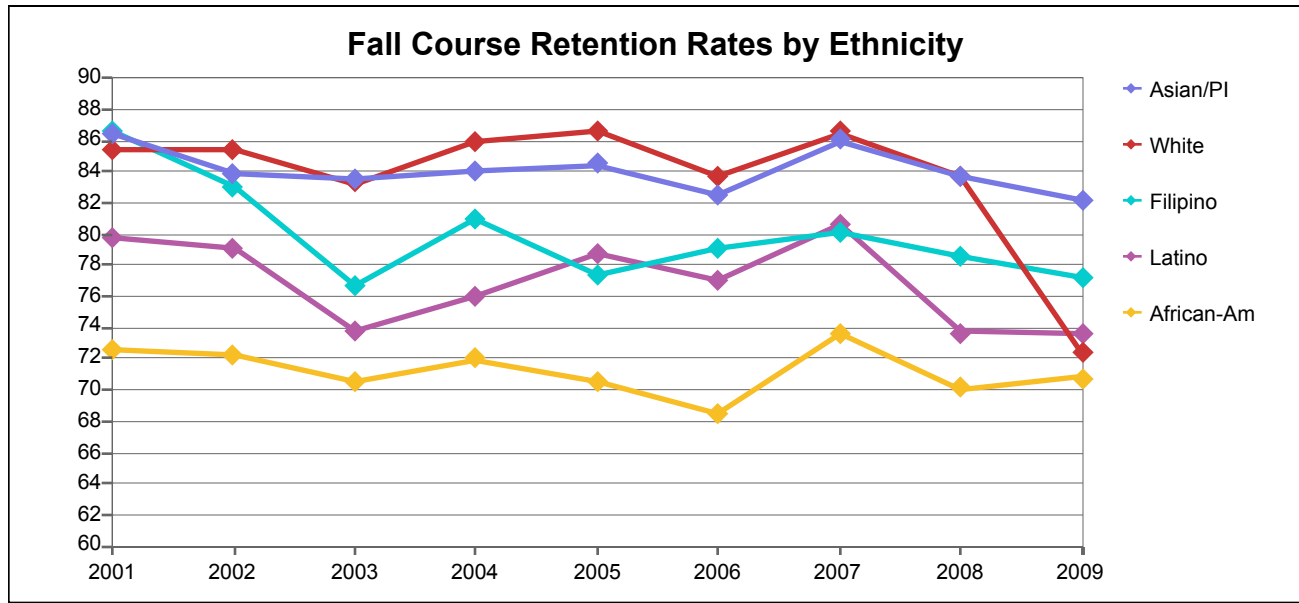
Number of Fall Successful Grades by Age Group

Age Group	2001	2002	2003	2004	2005	2006	2007	2008	2009
Under 16	135	65	15	18	13	102	156	167	127
16 - 18	785	751	613	615	693	661	747	864	774
19 - 24	2,354	2,422	2,712	2,601	2,570	2,506	2,464	2,423	2,724
25 - 29	1,234	1,369	1,417	1,499	1,374	1,401	1,383	1,396	1,425
30 - 34	1,075	1,148	1,126	1,162	1,075	1,007	988	945	921
35 - 54	2,903	3,415	3,397	3,028	2,973	2,978	2,729	2,481	2,179
55 and Over	727	848	788	668	682	802	897	887	542
Total	9,213	10,018	10,068	9,591	9,380	9,457	9,364	9,163	8,692

Course Success Rates by Age Group

Age Group	2001	2002	2003	2004	2005	2006	2007	2008	2009
Under 16	64	62	63	82	62	95	90	95	98
16 - 18	60	58	51	57	55	51	57	57	52
19 - 24	62	60	58	59	60	56	58	55	55
25 - 29	67	66	65	69	68	65	67	67	63
30 - 34	72	70	67	67	69	67	68	66	63
35 - 54	76	75	71	72	73	70	72	69	63
55 and Over	77	78	77	71	72	72	73	75	51
All Students	69	68	65	66	66	64	66	64	59

Merritt College



Number of Fall Total Grades Awarded by Ethnicity

Ethnicity	2001	2002	2003	2004	2005	2006	2007	2008	2009
African-Am	5,419	6,164	6,609	6,162	5,849	6,212	5,671	5,505	4,118
Asian/PI	1,828	1,981	2,169	2,075	1,978	1,959	1,919	1,922	1,644
Filipino	350	399	518	451	474	474	414	391	276
Latino	1,965	2,116	2,178	1,994	2,079	2,340	2,272	2,444	1,899
Native Am	122	117	109	115	87	125	110	270	176
Other/Unkwn	953	1,060	1,047	1,255	1,154	1,195	1,209	1,340	4,732
White	2,737	2,959	2,946	2,455	2,544	2,561	2,640	2,518	1,946
Total	13,374	14,796	15,576	14,507	14,165	14,866	14,235	14,390	14,791

Number of Fall Completion Grades by Ethnicity

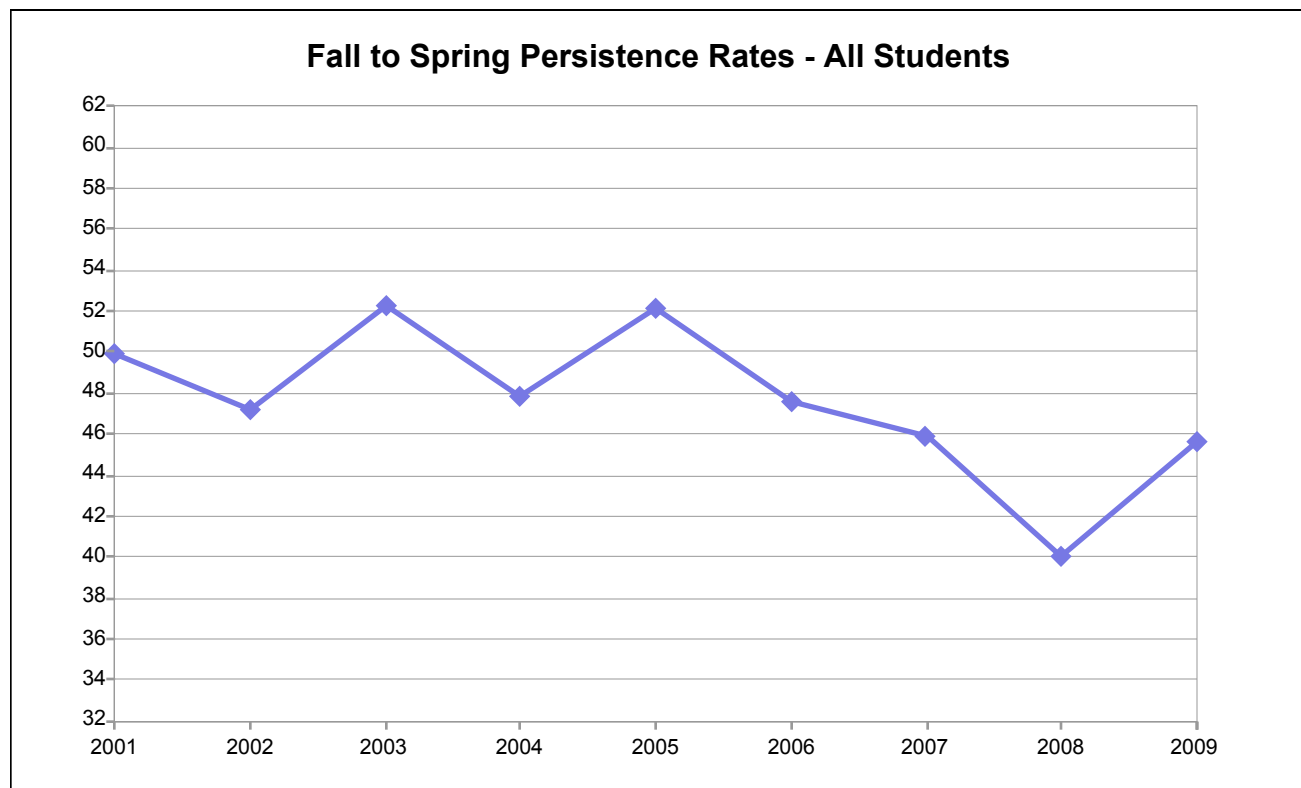
Ethnicity	2001	2002	2003	2004	2005	2006	2007	2008	2009
African-Am	3,930	4,456	4,658	4,435	4,125	4,255	4,173	3,858	2,915
Asian/PI	1,581	1,662	1,812	1,745	1,671	1,616	1,651	1,610	1,351
Filipino	303	331	397	365	367	375	332	307	213
Latino	1,566	1,674	1,608	1,514	1,636	1,802	1,833	1,801	1,399
Native Am	89	77	76	86	65	100	70	202	124
Other/Unkwn	762	838	847	993	949	951	991	1,051	3,619
White	2,337	2,528	2,453	2,108	2,202	2,142	2,284	2,109	1,407
Total	10,568	11,566	11,851	11,246	11,015	11,241	11,334	10,938	11,028

Course Retention Rates by Ethnicity

Ethnicity	2001	2002	2003	2004	2005	2006	2007	2008	2009
African-Am	73	72	70	72	71	68	74	70	71
Asian/PI	86	84	84	84	84	82	86	84	82
Filipino	87	83	77	81	77	79	80	79	77
Latino	80	79	74	76	79	77	81	74	74
Native Am	73	66	70	75	75	80	64	75	70
Other/Unkwn	80	79	81	79	82	80	82	78	76
White	85	85	83	86	87	84	87	84	72
All Students	79	78	76	78	78	76	80	76	75

Retention is defined as the number of grades of A, B, C, CR, D, NC, or F divided by the total number of official grades including official W's.

Merritt College



Number Enrolled at Fall Census - All Students

Dimension	2001	2002	2003	2004	2005	2006	2007	2008	2009
All Students	7,262	7,895	8,147	7,504	7,460	7,785	7,500	7,415	7,622

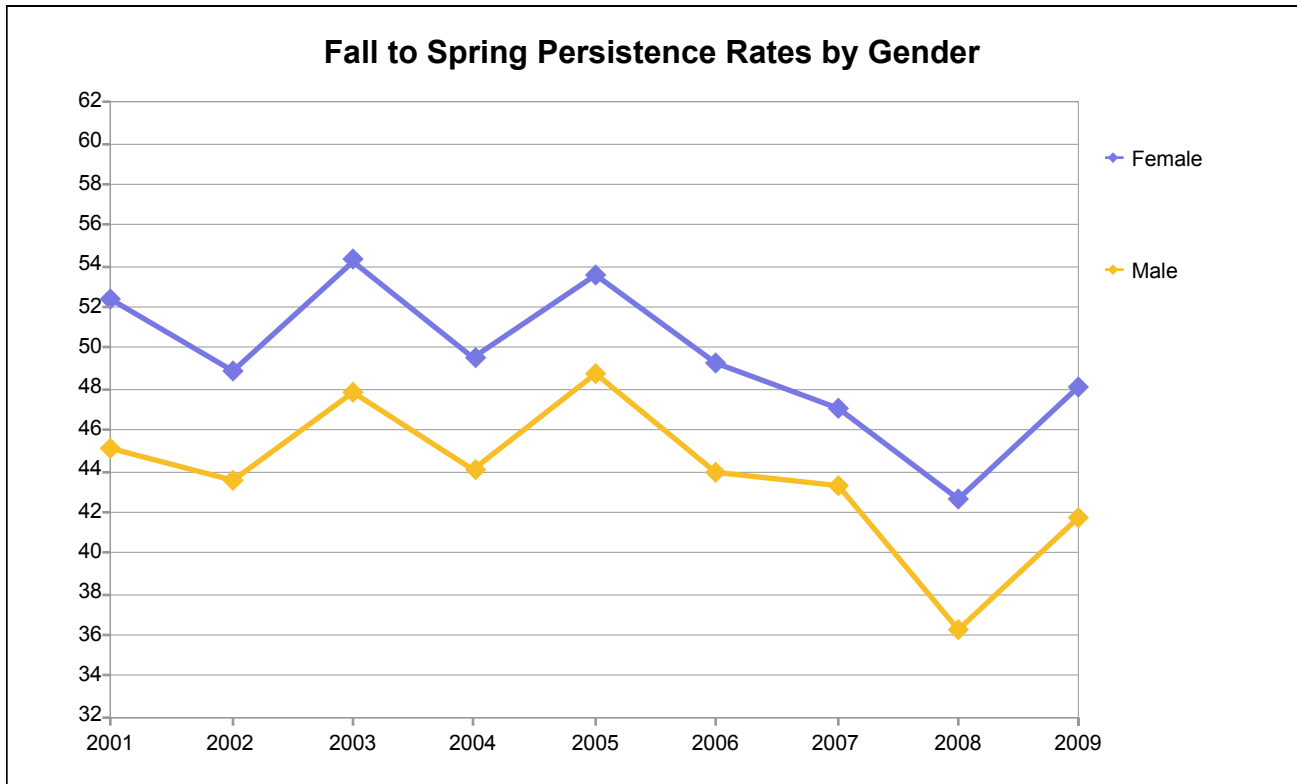
Number of Fall Persisting to Spring Opening Day - All Students

Dimension	2001	2002	2003	2004	2005	2006	2007	2008	2009
All Students	3,622	3,723	4,255	3,586	3,888	3,707	3,445	2,968	3,482

Fall to Spring Persistence Rates - All Students

Dimension	2001	2002	2003	2004	2005	2006	2007	2008	2009
All Students	50	47	52	48	52	48	46	40	46

Merritt College



Number Enrolled at Fall Census by Gender

Gender	2001	2002	2003	2004	2005	2006	2007	2008	2009
Female	4,861	5,415	5,554	5,054	5,153	5,253	5,158	4,738	4,618
Male	2,296	2,341	2,430	2,240	2,180	2,455	2,291	2,242	2,355
Unkwn	105	139	163	210	127	77	51	435	649
Total	7,262	7,895	8,147	7,504	7,460	7,785	7,500	7,415	7,622

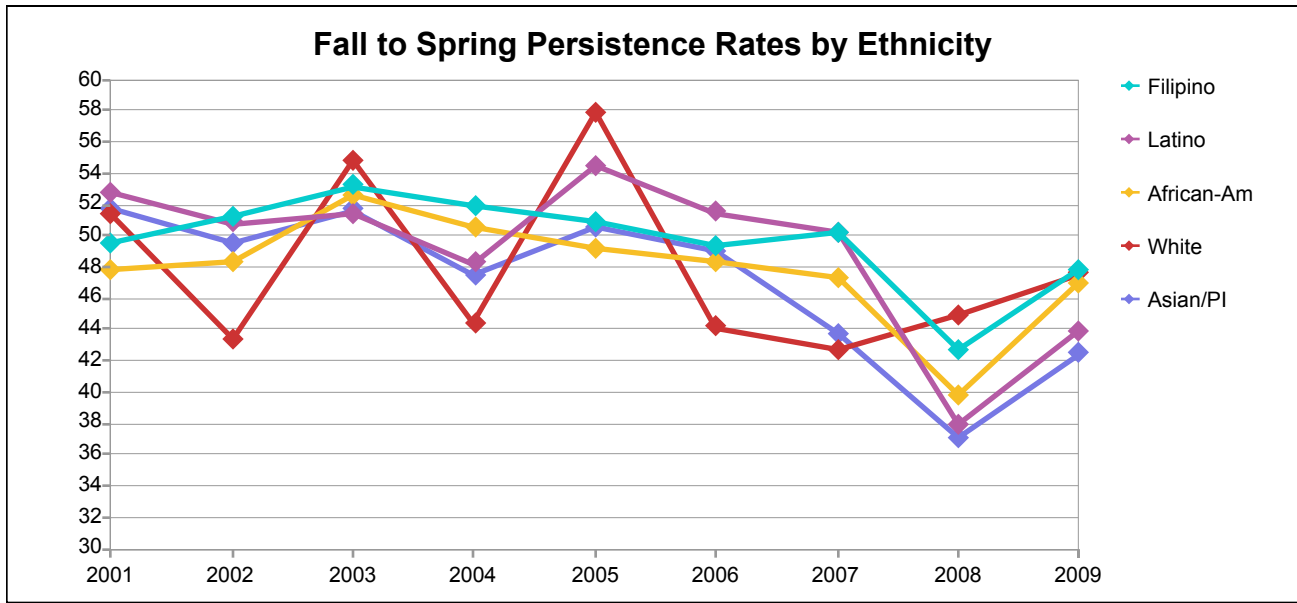
Number of Fall Persisting to Spring Opening Day by Gender

Gender	2001	2002	2003	2004	2005	2006	2007	2008	2009
Female	2,547	2,648	3,015	2,504	2,760	2,591	2,429	2,023	2,218
Male	1,036	1,020	1,162	988	1,064	1,079	991	813	983
Unkwn	39	55	78	94	64	37	25	132	281
Total	3,622	3,723	4,255	3,586	3,888	3,707	3,445	2,968	3,482

Fall to Spring Persistence Rates by Gender

Gender	2001	2002	2003	2004	2005	2006	2007	2008	2009
Female	52	49	54	50	54	49	47	43	48
Male	45	44	48	44	49	44	43	36	42
Unkwn	37	40	48	45	50	48	49	30	43
Total	50	47	52	48	52	48	46	40	46

Merritt College



Number Enrolled at Fall Census by Ethnicity

Ethnicity	2001	2002	2003	2004	2005	2006	2007	2008	2009
African-Am	2,573	2,837	2,936	2,747	2,706	2,804	2,628	2,420	2,097
Asian/PI	1,107	1,262	1,355	1,250	1,223	1,220	1,164	1,132	1,167
Filipino	182	219	265	233	244	247	209	192	159
Latino	1,089	1,099	1,123	1,072	1,091	1,226	1,210	1,282	1,014
Native Am	53	55	50	53	46	61	50	124	43
Other/Unkwn	637	739	747	706	646	669	678	732	1,926
White	1,621	1,684	1,671	1,443	1,504	1,558	1,561	1,533	1,216
Total	7,262	7,895	8,147	7,504	7,460	7,785	7,500	7,415	7,622

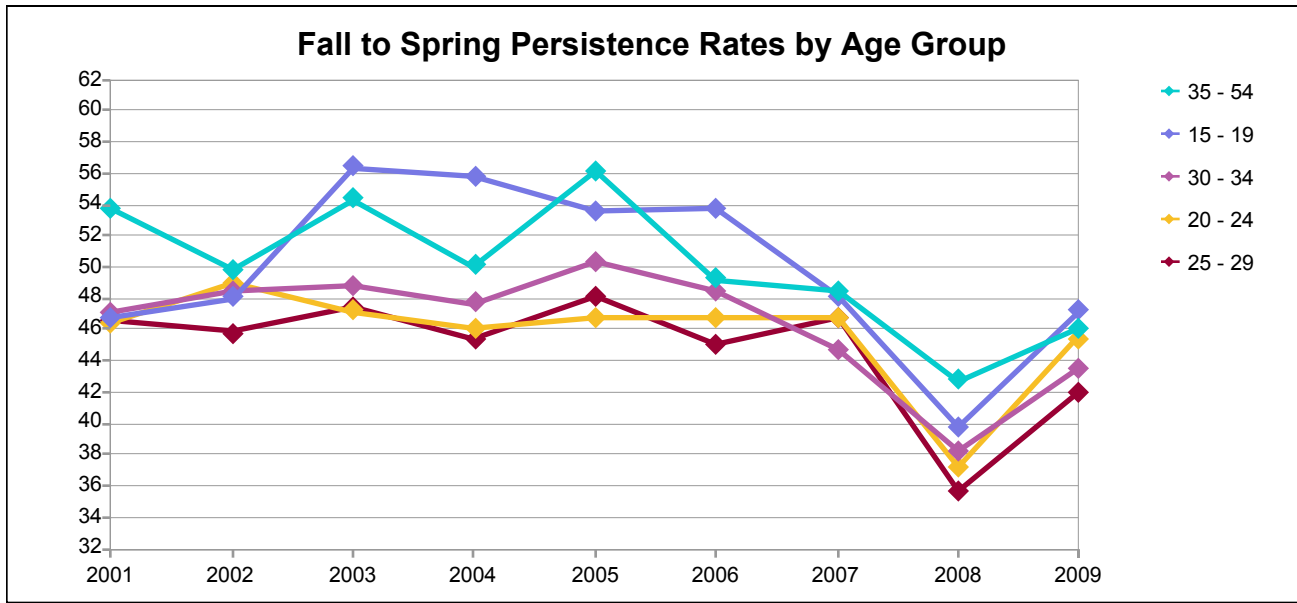
Number of Fall Persisting to Spring Opening Day by Ethnicity

Ethnicity	2001	2002	2003	2004	2005	2006	2007	2008	2009
African-Am	1,229	1,370	1,542	1,390	1,331	1,355	1,242	963	985
Asian/PI	573	624	700	593	618	598	509	420	495
Filipino	90	112	141	121	124	122	105	82	76
Latino	574	558	577	517	594	631	607	486	445
Native Am	27	18	27	28	25	30	17	59	19
Other/Unkwn	297	311	353	296	325	283	299	270	884
White	832	730	915	641	871	688	666	688	578
Total	3,622	3,723	4,255	3,586	3,888	3,707	3,445	2,968	3,482

Fall to Spring Persistence Rates by Ethnicity

Ethnicity	2001	2002	2003	2004	2005	2006	2007	2008	2009
African-Am	47.8	48.3	52.5	50.6	49.2	48.3	47.3	39.8	47.0
Asian/PI	51.8	49.4	51.7	47.4	50.5	49.0	43.7	37.1	42.4
Filipino	49.5	51.1	53.2	51.9	50.8	49.4	50.2	42.7	47.8
Latino	52.7	50.8	51.4	48.2	54.4	51.5	50.2	37.9	43.9
Native Am	50.9	32.7	54.0	52.8	54.3	49.2	34.0	47.6	44.2
Other/Unkwn	46.6	42.1	47.3	41.9	50.3	42.3	44.1	36.9	45.9
White	51.3	43.3	54.8	44.4	57.9	44.2	42.7	44.9	47.5
All	49.9	47.2	52.2	47.8	52.1	47.6	45.9	40.0	45.7

Merritt College



Number Enrolled at Fall Census by Age Group

Age Group	2001	2002	2003	2004	2005	2006	2007	2008	2009
15 - 19	975	917	889	770	877	965	985	1,045	1,047
20 - 24	1,374	1,483	1,734	1,678	1,693	1,666	1,612	1,647	1,815
25 - 29	1,036	1,144	1,199	1,173	1,145	1,203	1,130	1,154	1,240
30 - 34	857	947	981	942	877	837	807	783	794
35 - 54	2,269	2,594	2,662	2,303	2,216	2,313	2,112	1,945	1,964
55 and Over	684	783	675	634	644	740	782	762	757
Other/Unkwn	67	27	7	4	8	61	72	79	5
Total	7,262	7,895	8,147	7,504	7,460	7,785	7,500	7,415	7,622

Number of Fall Persisting to Spring Opening Day by Age Group

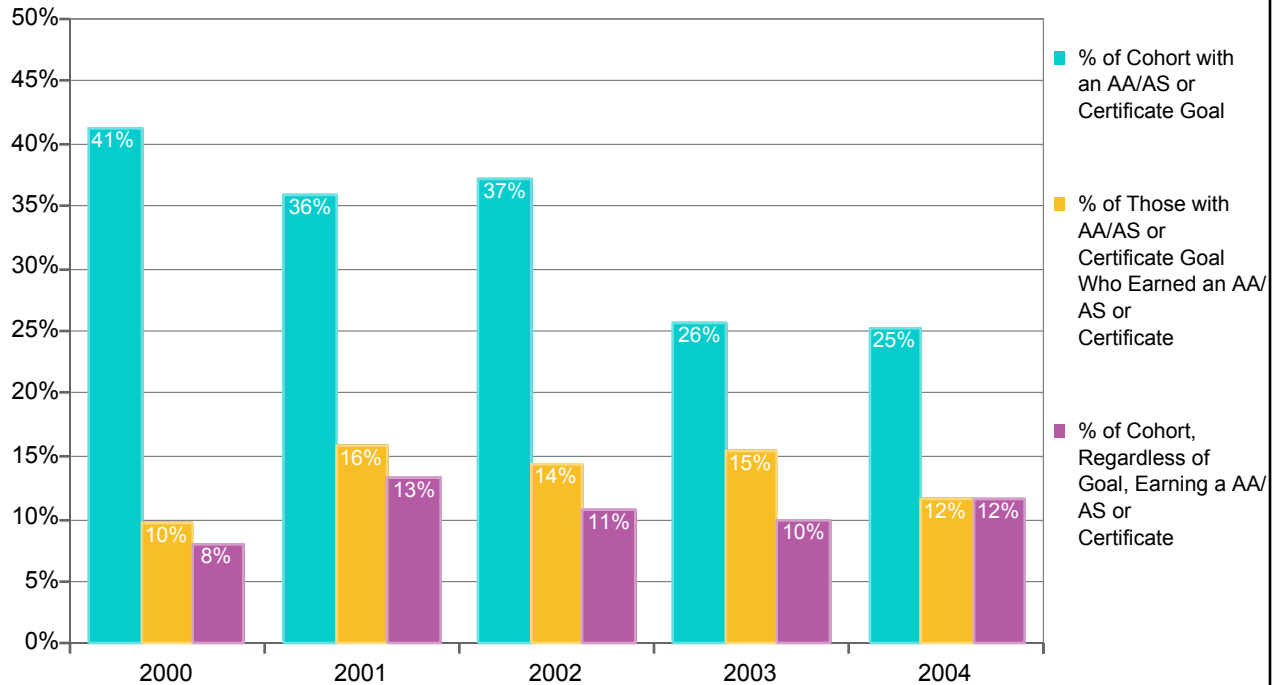
Age Group	2001	2002	2003	2004	2005	2006	2007	2008	2009
15 - 19	456	440	501	429	470	519	473	416	494
20 - 24	637	725	818	773	790	780	754	612	825
25 - 29	483	524	569	532	550	541	528	411	521
30 - 34	403	459	479	449	441	405	361	299	345
35 - 54	1,218	1,292	1,446	1,153	1,242	1,138	1,022	831	903
55 and Over	403	275	436	247	391	272	305	398	393
Other/Unkwn	22	8	6	3	4	52	2	1	1
Total	3,622	3,723	4,255	3,586	3,888	3,707	3,445	2,968	3,482

Fall to Spring Persistence Rates by Age Group

Age Group	2001	2002	2003	2004	2005	2006	2007	2008	2009
15 - 19	47	48	56	56	54	54	48	40	47
20 - 24	46	49	47	46	47	47	47	37	45
25 - 29	47	46	47	45	48	45	47	36	42
30 - 34	47	48	49	48	50	48	45	38	43
35 - 54	54	50	54	50	56	49	48	43	46
55 and Over	59	35	65	39	61	37	39	52	52
Other/Unkwn	33	30	86	75	50	85	3	1	20
Total	50	47	52	48	52	48	46	40	46

Merritt College

Percentages of the Fall First-Time College Cohorts with AA/AS or Certificate Goals, Those with Goals Earning an Award, and Those Earning an Award Regardless of Goal within Six Years



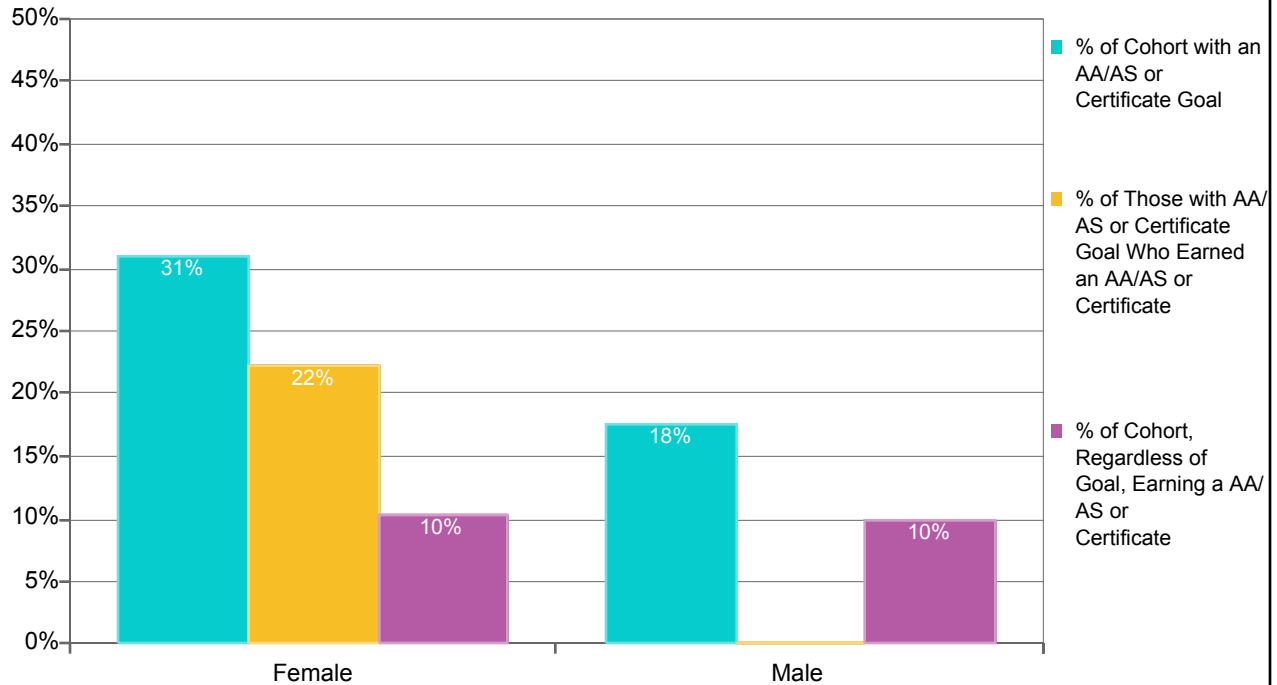
Count and Percentage Tracking of the Fall Matriculated First-Time College Cohorts for AA/AS Degree or Certificate Goals and AA/AS or Certificate Awards within Six Years

Fall First-time College Cohort	Count of Fall Cohort	Count of Cohort with AA/AS or Certificate Goal	Percent of Cohort with AA/AS or Certificate Goal	Count of Cohort with AA/AS or Certificate Goal Who Earned an AA/AS or Certificate	Percent of Those with AA/AS or Certificate Goal Who Earned an AA/AS or Certificate	Count of Cohort, Regardless of Goal, Earning a Degree or Certificate	Percent of Cohort, Regardless of Goal, Earning a Degree or Certificate
2000	51	21	41%	2	10%	4	8%
2001	53	19	36%	3	16%	7	13%
2002	94	35	37%	5	14%	10	11%
2003	101	26	26%	4	15%	10	10%
2004	103	26	25%	3	12%	12	12%
Totals	402	127	32%	17	13%	43	11%

Note: The cohort consists of Fall students enrolled at census with an Enrollment Status of "First-Time College" and with a Matriculation Status of "Matriculated." The student's goal is the Informed or Matriculation Goal with values of 1, 3, 4, or 5, i.e., the goals of Transfer with an AA/AS, AA/AS General Education, AA/AS Vocational, or Certificate. Students are individually tracked to determine the number of the cohort, the number of those with the indicated goals who earn an AA/AS degree or Certificate at any Peralta CCD college, and the number who, regardless of goal, earn an AA/AS degree or Certificate at any Peralta CCD college within the indicated number of years.

Merritt College

Percentages of the Fall 2003 First-Time College Cohort with AA/AS or Certificate Goals, Those with Goals Earning an Award, and Those Earning an Award Regardless of Goal within Six Years by Gender

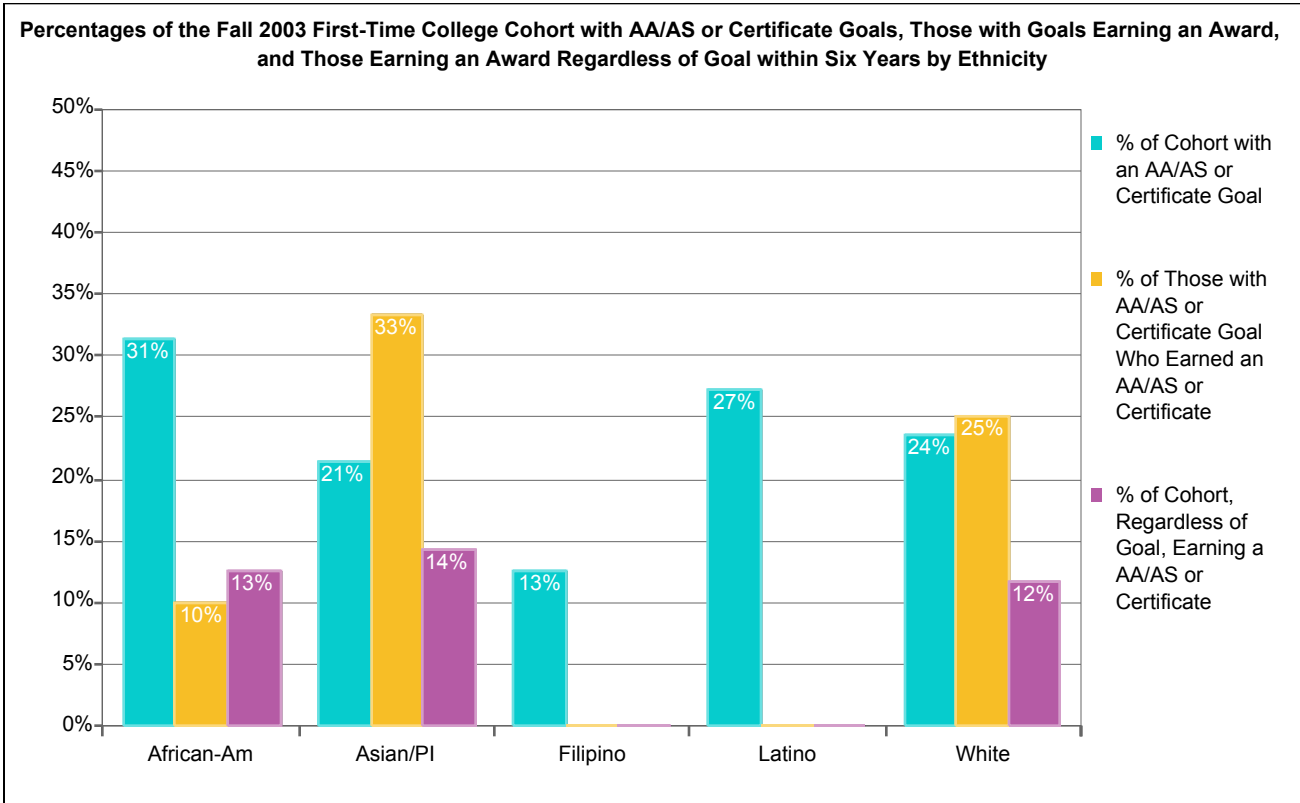


Count and Percentage Tracking of the Fall 2003 Matriculated First-Time College Cohort for AA/AS Degree or Certificate Goals and AA/AS or Certificate Awards within Six Years by Gender

Gender	Count of Fall Cohort	Count of Cohort with AA/AS or Certificate Goal	Percent of Cohort with AA/AS or Certificate Goal	Count of Cohort with AA/AS or Certificate Goal Who Earned an AA/AS or Certificate	Percent of Those with AA/AS or Certificate Goal Who Earned an AA/AS or Certificate	Count of Cohort, Regardless of Goal, Earning a Degree or Certificate	Percent of Cohort, Regardless of Goal, Earning a Degree or Certificate
Female	58	18	31%	4	22%	6	10%
Male	40	7	18%	0	0%	4	10%
Unkwn	3	1	33%	0	0%	0	0%
Totals	101	26	26%	4	15%	10	10%

Note: The cohort consists of Fall students enrolled at census with an Enrollment Status of "First-Time College" and with a Matriculation Status of "Matriculated." The student's goal is the Informed or Matriculation Goal with values of 1, 3, 4, or 5, i.e., the goals of Transfer with an AA/AS, AA/AS General Education, AA/AS Vocational, or Certificate. Students are individually tracked to determine the number of the cohort, the number of those with the indicated goals who earn an AA/AS degree or Certificate at any Peralta CCD college, and the number who, regardless of goal, earn an AA/AS degree or Certificate at any Peralta CCD college within the indicated number of years.

Merritt College

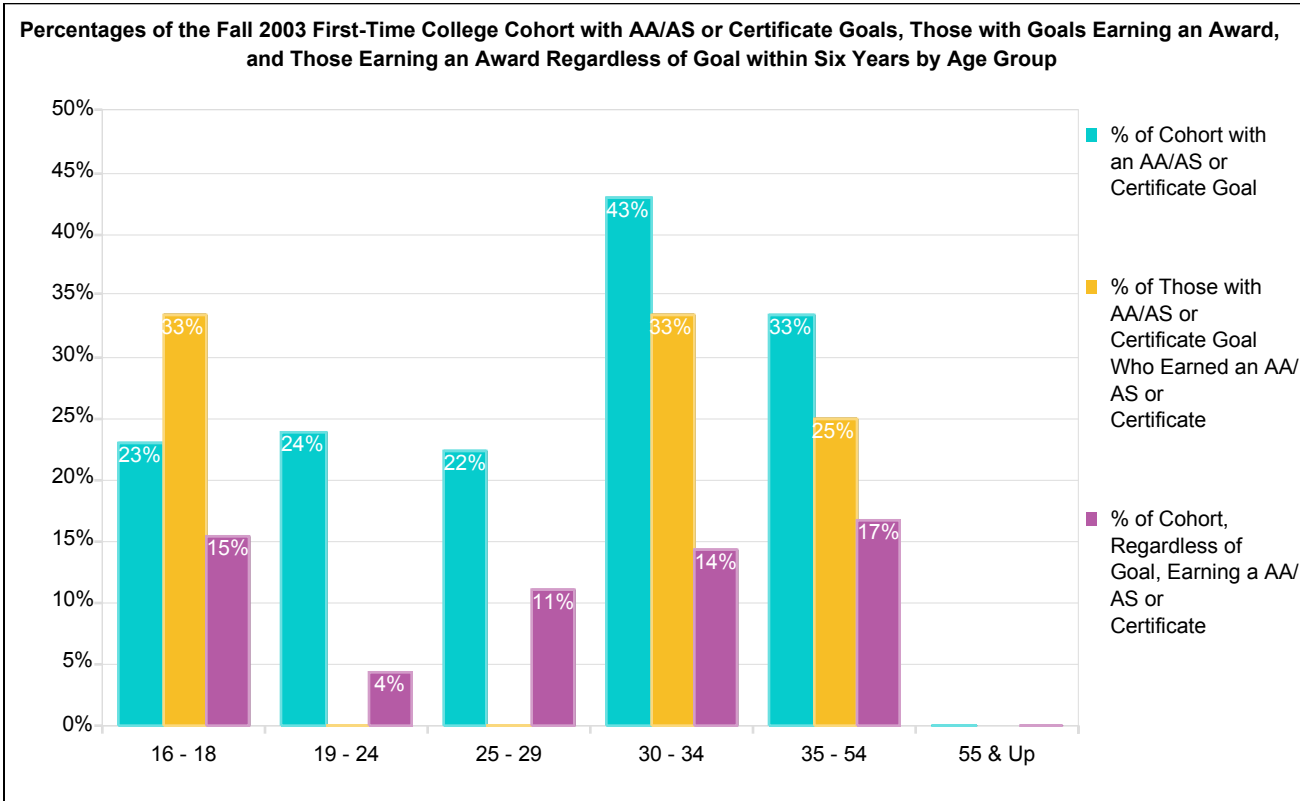


Count and Percentage Tracking of the Fall 2003 Matriculated First-Time College Cohort for AA/AS Degree or Certificate Goals and AA/AS or Certificate Awards within Six Years by Ethnicity

Ethnicity	Count of Fall Cohort	Count of Cohort with AA/AS or Certificate Goal	Percent of Cohort with AA/AS or Certificate Goal	Count of Cohort with AA/AS or Certificate Goal Who Earned an AA/AS or Certificate	Percent of Those with AA/AS or Certificate Goal Who Earned an AA/AS or Certificate	Count of Cohort, Regardless of Goal, Earning a Degree or Certificate	Percent of Cohort, Regardless of Goal, Earning a Degree or Certificate
African-Am	32	10	31%	1	10%	4	13%
Asian/PI	28	6	21%	2	33%	4	14%
Filipino	8	1	13%	0	0%	0	0%
Latino	11	3	27%	0	0%	0	0%
Other/Unkw	5	2	40%	0	0%	0	0%
White	17	4	24%	1	25%	2	12%
Totals	101	26	26%	4	15%	10	10%

Note: The cohort consists of Fall students enrolled at census with an Enrollment Status of "First-Time College" and with a Matriculation Status of "Matriculated." The student's goal is the Informed or Matriculation Goal with values of 1, 3, 4, or 5, i.e., the goals of Transfer with an AA/AS, AA/AS General Education, AA/AS Vocational, or Certificate. Students are individually tracked to determine the number of the cohort, the number of those with the indicated goals who earn an AA/AS degree or Certificate at any Peralta CCD college, and the number who, regardless of goal, earn an AA/AS degree or Certificate at any Peralta CCD college within the indicated number of years.

Merritt College



Count and Percentage Tracking of the Fall 2003 Matriculated First-Time College Cohort for AA/AS Degree or Certificate Goals and AA/AS or Certificate Awards within Six Years by Age Group

Age Group	Count of Fall Cohort	Count of Cohort with AA/AS or Certificate Goal	Percent of Cohort with AA/AS or Certificate Goal	Count of Cohort with AA/AS or Certificate Goal Who Earned an AA/AS or Certificate	Percent of Those with AA/AS or Certificate Goal Who Earned an AA/AS or Certificate	Count of Cohort, Regardless of Goal, Earning a Degree or Certificate	Percent of Cohort, Regardless of Goal, Earning a Degree or Certificate
16 - 18	26	6	23%	2	33%	4	15%
19 - 24	46	11	24%	0	0%	2	4%
25 - 29	9	2	22%	0	0%	1	11%
30 - 34	7	3	43%	1	33%	1	14%
35 - 54	12	4	33%	1	25%	2	17%
55 & Up	1	0	0%	0	0%	0	0%
Totals	101	26	26%	4	15%	10	10%

Note: The cohort consists of Fall students enrolled at census with an Enrollment Status of "First-Time College" and with a Matriculation Status of "Matriculated." The student's goal is the Informed or Matriculation Goal with values of 1, 3, 4, or 5, i.e., the goals of Transfer with an AA/AS, AA/AS General Education, AA/AS Vocational, or Certificate. Students are individually tracked to determine the number of the cohort, the number of those with the indicated goals who earn an AA/AS degree or Certificate at any Peralta CCD college, and the number who, regardless of goal, earn an AA/AS degree or Certificate at any Peralta CCD college within the indicated number of years.