



# Peralta Facts

## Student Outcomes

### The District

March 2010

Peralta Community College District  
Office of Institutional Research

# **Peralta Facts Student Outcomes**

## **Peralta Community College District**

### **Table of Contents**

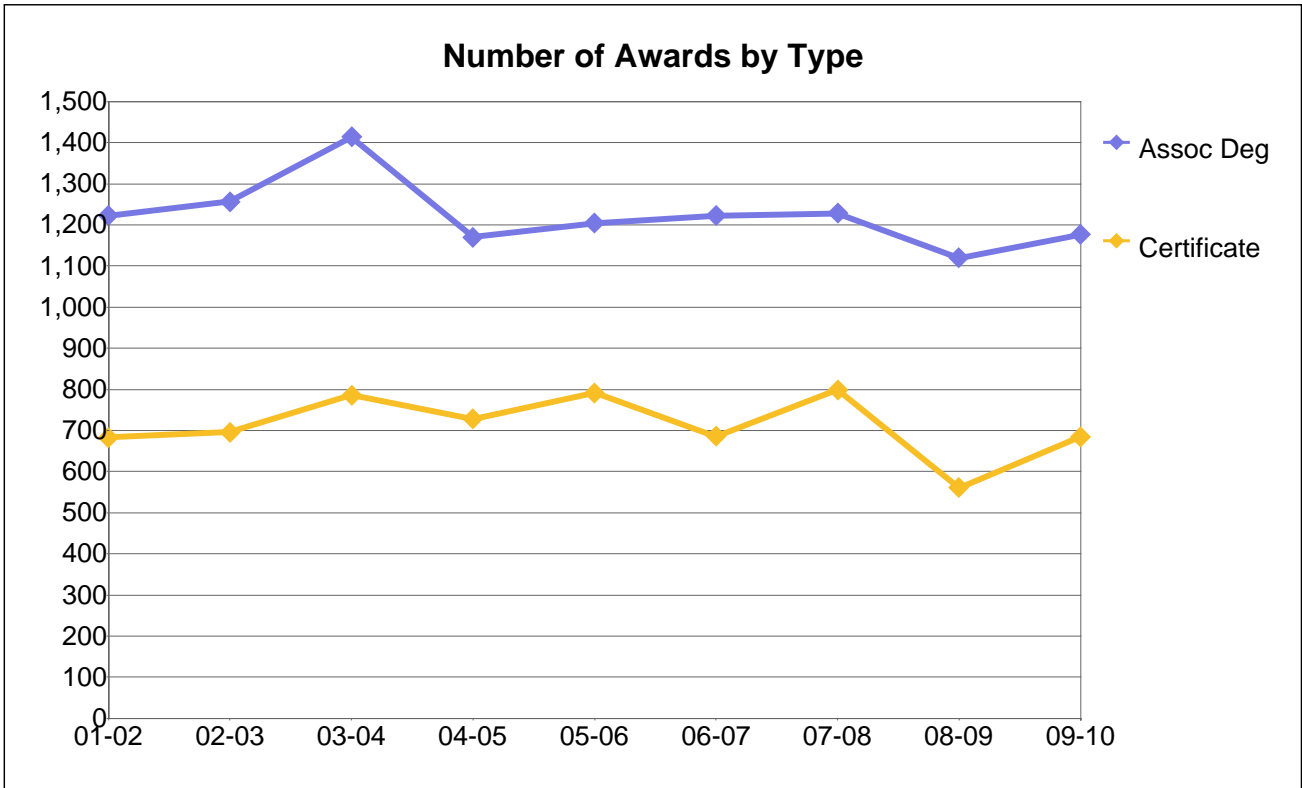
Number of Awards by Type (Degrees and Certificates).....	1
Number of Associate Degrees by Gender.....	2
Number of Associate Degrees by Ethnicity.....	3
Number of Associate Degrees by Age Group.....	4
Number of Certificates by Gender.....	5
Number of Certificates by Ethnicity.....	6
Number of Certificates by Age Group.....	7
Number of Transfers to CSU and UC by Year.....	8
Number of Transfers to UC by Ethnicity.....	9
Number of Transfer to CSU by Ethnicity.....	10
Fall Grade Frequency and Percentage Distribution by Year.....	11
Fall Course Success Rate by All Students.....	12
Fall Course Success Rate by Gender.....	13
Fall Course Success Rates by Ethnicity.....	14
Fall Course Success Rates by Age Group.....	15
Fall Course Retention Rates by Ethnicity.....	16
Fall to Spring Persistence Counts and Rates by All Students.....	17
Fall to Spring Persistence Counts and Rates by Gender.....	18
Fall to Spring Persistence Counts and Rates by Ethnicity.....	19
Fall to Spring Persistence Counts and Rates by Age Group.....	20
Tracking of Fall First-time Cohorts by Goal and Completion.....	21

Tracking of Fall 2003 First-time Cohorts by Goal and Completion by Gender .....22

Tracking of Fall 2003 First-time Cohorts by Goal and Completion by Ethnicity.....23

Tracking of Fall 2003 First-time Cohorts by Goal and Completion by Age Group .....24

**Peralta Community College District**



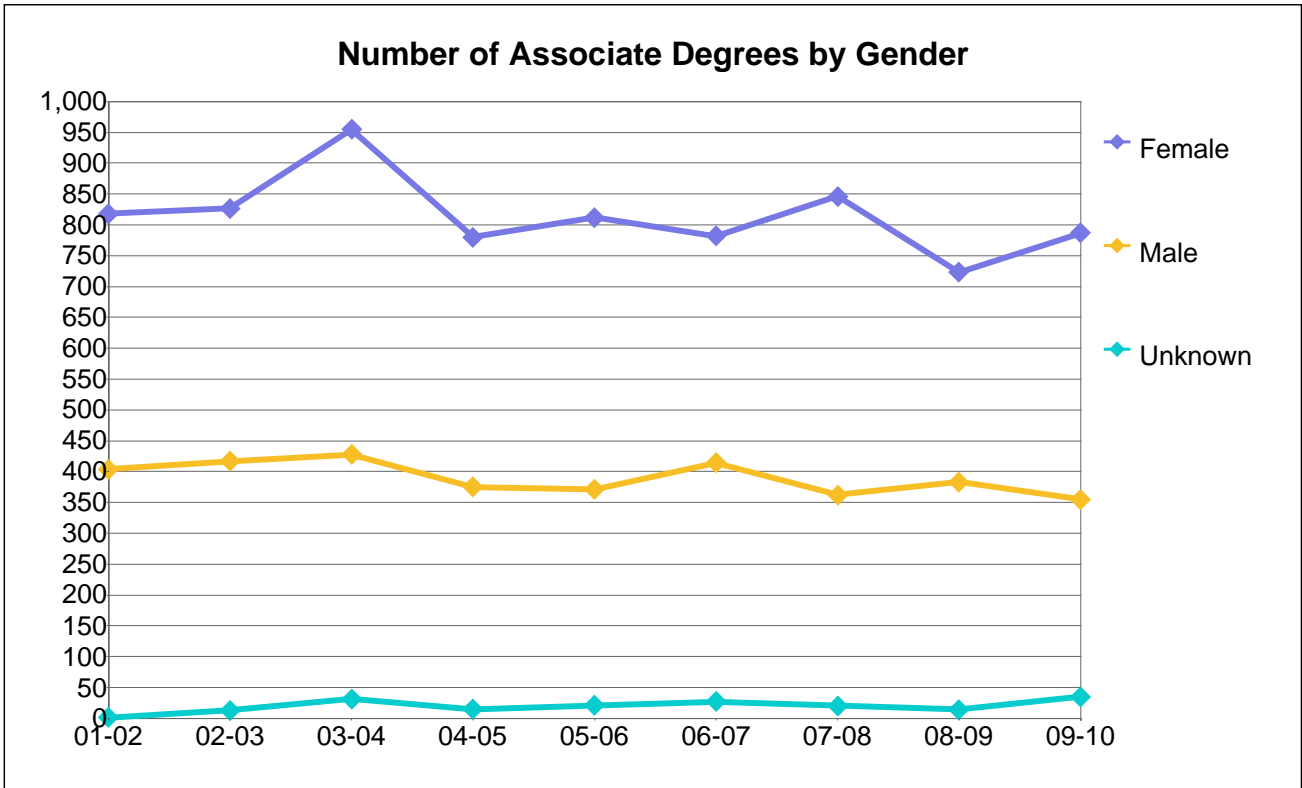
**Number of Awards by Type**

Deg or Cert	01-02	02-03	03-04	04-05	05-06	06-07	07-08	08-09	09-10
Assoc Deg	1,223	1,257	1,414	1,170	1,204	1,223	1,228	1,120	1,177
Certificate	683	696	786	728	791	686	799	561	685
Total	1,906	1,953	2,200	1,898	1,995	1,909	2,027	1,681	1,862

**Percentage Distribution of Awards by Type**

Deg or Cert	01-02	02-03	03-04	04-05	05-06	06-07	07-08	08-09	09-10
Assoc Deg	64%	64%	64%	62%	60%	64%	61%	67%	63%
Certificate	36%	36%	36%	38%	40%	36%	39%	33%	37%
Total	100%	100%	100%	100%	100%	100%	100%	100%	100%

**Peralta Community College District**



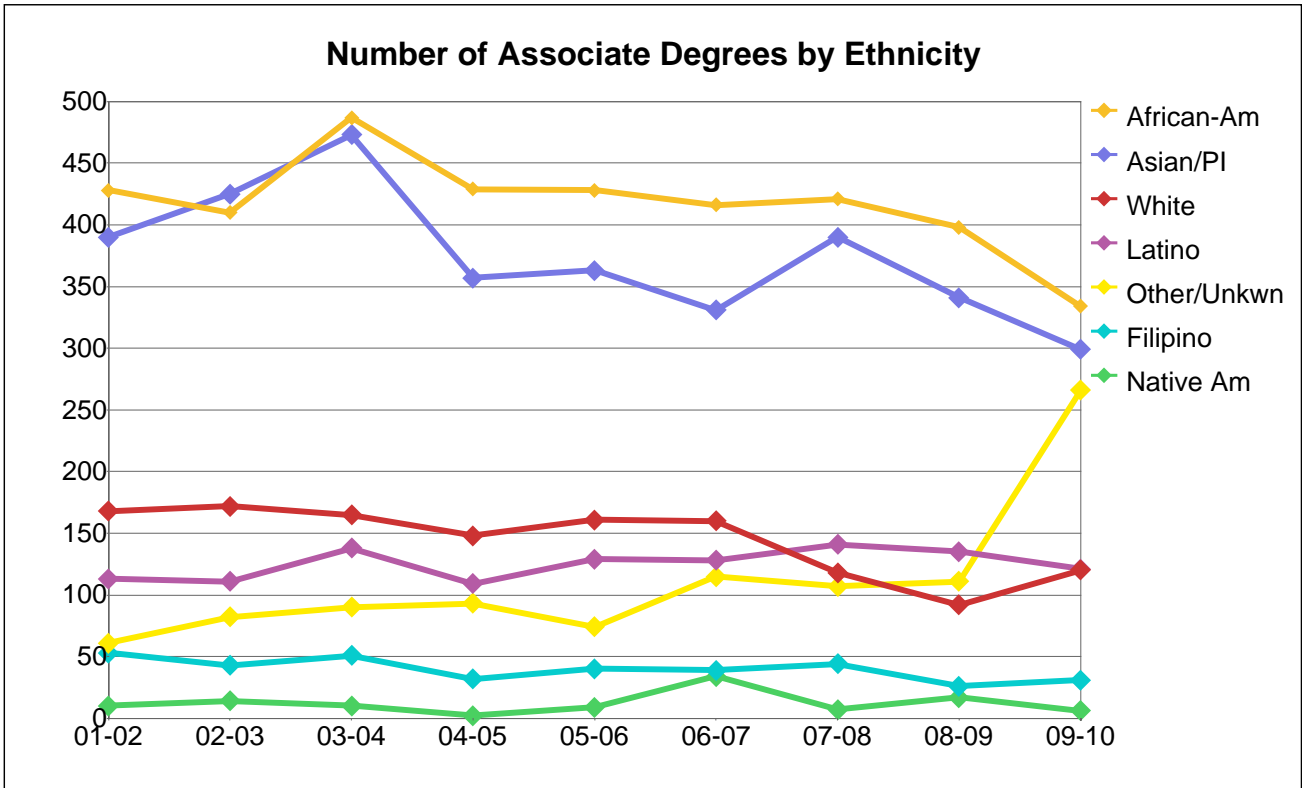
### Number of Associate Degrees by Gender

Gender	01-02	02-03	03-04	04-05	05-06	06-07	07-08	08-09	09-10
Female	818	827	955	780	812	782	846	723	787
Male	404	417	428	375	371	414	362	383	355
Unknown	1	13	31	15	21	27	20	14	35
<b>Total</b>	<b>1,223</b>	<b>1,257</b>	<b>1,414</b>	<b>1,170</b>	<b>1,204</b>	<b>1,223</b>	<b>1,228</b>	<b>1,120</b>	<b>1,177</b>

### Percentage Distribution of Associate Degrees by Gender

Gender	01-02	02-03	03-04	04-05	05-06	06-07	07-08	08-09	09-10
Female	67%	66%	68%	67%	67%	64%	69%	65%	67%
Male	33%	33%	30%	32%	31%	34%	29%	34%	30%
Unknown	0%	1%	2%	1%	2%	2%	2%	1%	3%
<b>Total</b>	<b>100%</b>	<b>100%</b>	<b>100%</b>	<b>100%</b>	<b>100%</b>	<b>100%</b>	<b>100%</b>	<b>100%</b>	<b>100%</b>

**Peralta Community College District**



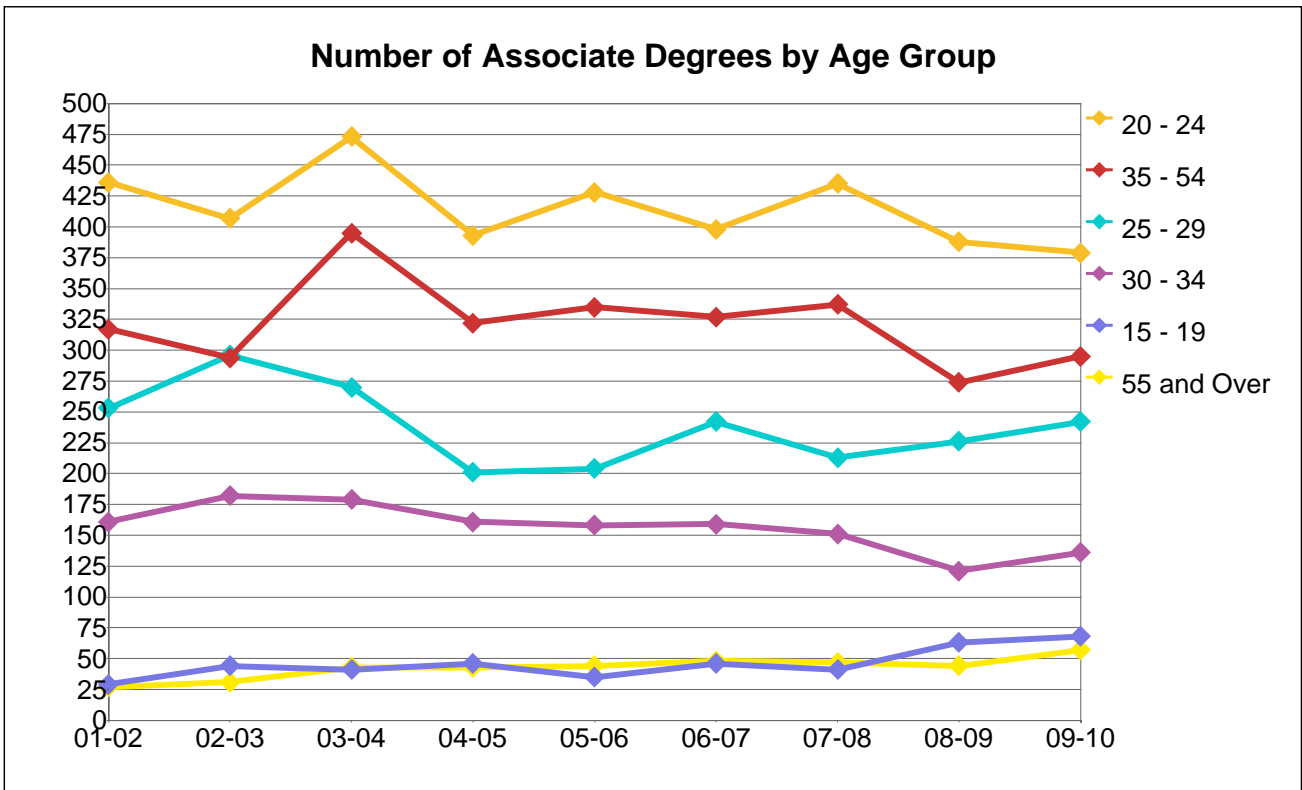
### Number of Associate Degrees by Ethnicity

Ethnicity	01-02	02-03	03-04	04-05	05-06	06-07	07-08	08-09	09-10
African-Am	428	410	487	429	428	416	421	398	334
Asian/PI	390	425	473	357	363	331	390	341	299
Filipino	53	43	51	32	40	39	44	26	31
Latino	113	111	138	109	129	128	141	135	121
Native Am	10	14	10	2	9	34	7	17	6
Other/Unkwn	61	82	90	93	74	115	107	111	266
White	168	172	165	148	161	160	118	92	120
<b>Total</b>	<b>1,223</b>	<b>1,257</b>	<b>1,414</b>	<b>1,170</b>	<b>1,204</b>	<b>1,223</b>	<b>1,228</b>	<b>1,120</b>	<b>1,177</b>

### Percentage Distribution of Associate Degrees by Ethnicity

Ethnicity	01-02	02-03	03-04	04-05	05-06	06-07	07-08	08-09	09-10
African-Am	35%	33%	34%	37%	36%	34%	34%	36%	28%
Asian/PI	32%	34%	33%	31%	30%	27%	32%	30%	25%
Filipino	4%	3%	4%	3%	3%	3%	4%	2%	3%
Latino	9%	9%	10%	9%	11%	10%	11%	12%	10%
Native Am	1%	1%	1%	0%	1%	3%	1%	2%	1%
Other/Unkwn	5%	7%	6%	8%	6%	9%	9%	10%	23%
White	14%	14%	12%	13%	13%	13%	10%	8%	10%
<b>Total</b>	<b>100%</b>	<b>100%</b>	<b>100%</b>	<b>100%</b>	<b>100%</b>	<b>100%</b>	<b>100%</b>	<b>100%</b>	<b>100%</b>

**Peralta Community College District**



**Number of Associate Degrees by Age Group**

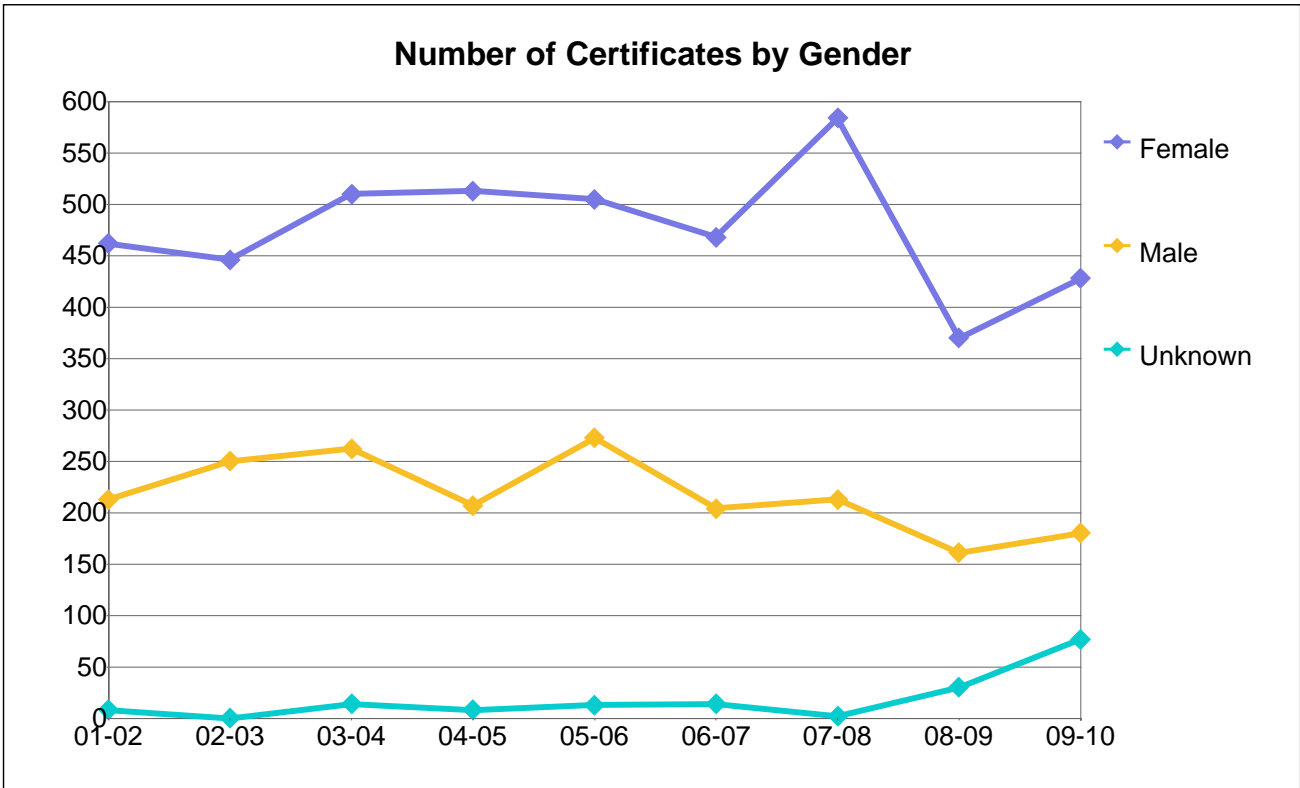
Age Group	01-02	02-03	03-04	04-05	05-06	06-07	07-08	08-09	09-10
15 - 19	29	44	41	46	35	46	41	63	68
20 - 24	436	407	473	393	428	398	435	388	379
25 - 29	253	296	270	201	204	242	213	226	242
30 - 34	161	182	179	161	158	159	151	121	136
35 - 54	317	294	395	322	335	327	337	274	295
55 and Ove	27	31	43	43	44	48	47	44	57
Unkwn	0	3	13	4	0	3	4	4	
Total	1,223	1,257	1,414	1,170	1,204	1,223	1,228	1,120	1,177

**Percentage Distribution of Associate Degrees by Age Group**

Age Group	01-02	02-03	03-04	04-05	05-06	06-07	07-08	08-09	09-10
15 - 19	2%	4%	3%	4%	3%	4%	3%	6%	6%
20 - 24	36%	32%	33%	34%	36%	33%	35%	35%	32%
25 - 29	21%	24%	19%	17%	17%	20%	17%	20%	21%
30 - 34	13%	14%	13%	14%	13%	13%	12%	11%	12%
35 - 54	26%	23%	28%	28%	28%	27%	27%	24%	25%
55 and Over	2%	2%	3%	4%	4%	4%	4%	4%	5%
Unkwn	0%	0%	1%	0%	0%	0%	0%	0%	
Total	100%	100%	100%	100%	100%	100%	100%	100%	100%

Note: Age as of 12/15 of the award year.

**Peralta Community College District**



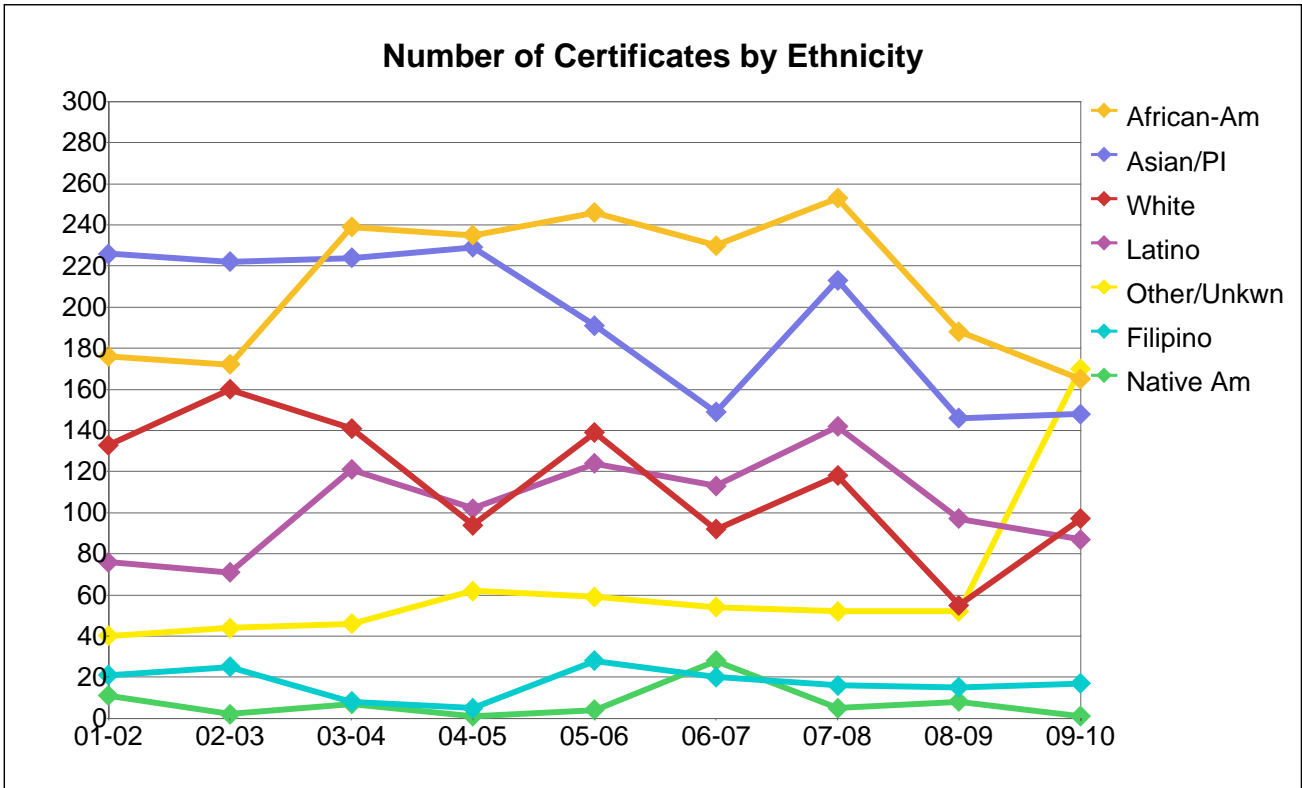
**Number of Certificates by Gender**

Gender	01-02	02-03	03-04	04-05	05-06	06-07	07-08	08-09	09-10
Female	462	446	510	513	505	468	584	370	428
Male	213	250	262	207	273	204	213	161	180
Unknown	8	0	14	8	13	14	2	30	77
Total	683	696	786	728	791	686	799	561	685

**Percentage Distribution of Certificates by Gender**

Gender	01-02	02-03	03-04	04-05	05-06	06-07	07-08	08-09	09-10
Female	68%	64%	65%	70%	64%	68%	73%	66%	62%
Male	31%	36%	33%	28%	35%	30%	27%	29%	26%
Unknown	1%	0%	2%	1%	2%	2%	0%	5%	11%
Total	100%	100%	100%	100%	100%	100%	100%	100%	100%

**Peralta Community College District**



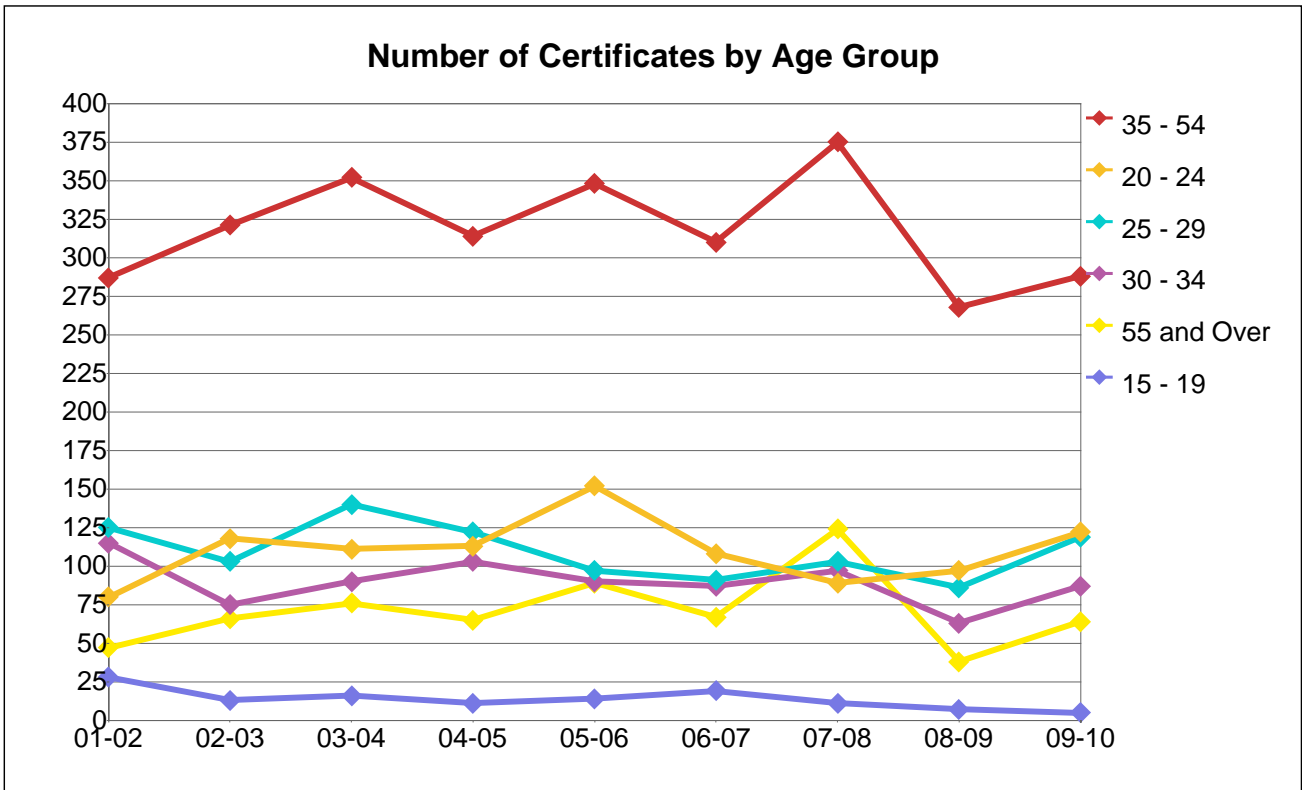
### Number of Certificates by Ethnicity

Ethnicity	01-02	02-03	03-04	04-05	05-06	06-07	07-08	08-09	09-10
African-Am	176	172	239	235	246	230	253	188	165
Asian/PI	226	222	224	229	191	149	213	146	148
Filipino	21	25	8	5	28	20	16	15	17
Latino	76	71	121	102	124	113	142	97	87
Native Am	11	2	7	1	4	28	5	8	1
Other/Unkwn	40	44	46	62	59	54	52	52	170
White	133	160	141	94	139	92	118	55	97
<b>Total</b>	<b>683</b>	<b>696</b>	<b>786</b>	<b>728</b>	<b>791</b>	<b>686</b>	<b>799</b>	<b>561</b>	<b>685</b>

### Percentage Distribution of Certificates by Ethnicity

Ethnicity	01-02	02-03	03-04	04-05	05-06	06-07	07-08	08-09	09-10
African-Am	26%	25%	30%	32%	31%	34%	32%	34%	24%
Asian/PI	33%	32%	28%	31%	24%	22%	27%	26%	22%
Filipino	3%	4%	1%	1%	4%	3%	2%	3%	2%
Latino	11%	10%	15%	14%	16%	16%	18%	17%	13%
Native Am	2%	0%	1%	0%	1%	4%	1%	1%	0%
Other/Unkwn	6%	6%	6%	9%	7%	8%	7%	9%	25%
White	19%	23%	18%	13%	18%	13%	15%	10%	14%
<b>Total</b>	<b>100%</b>	<b>100%</b>	<b>100%</b>	<b>100%</b>	<b>100%</b>	<b>100%</b>	<b>100%</b>	<b>100%</b>	<b>100%</b>

**Peralta Community College District**



### Number of Certificates by Age Group

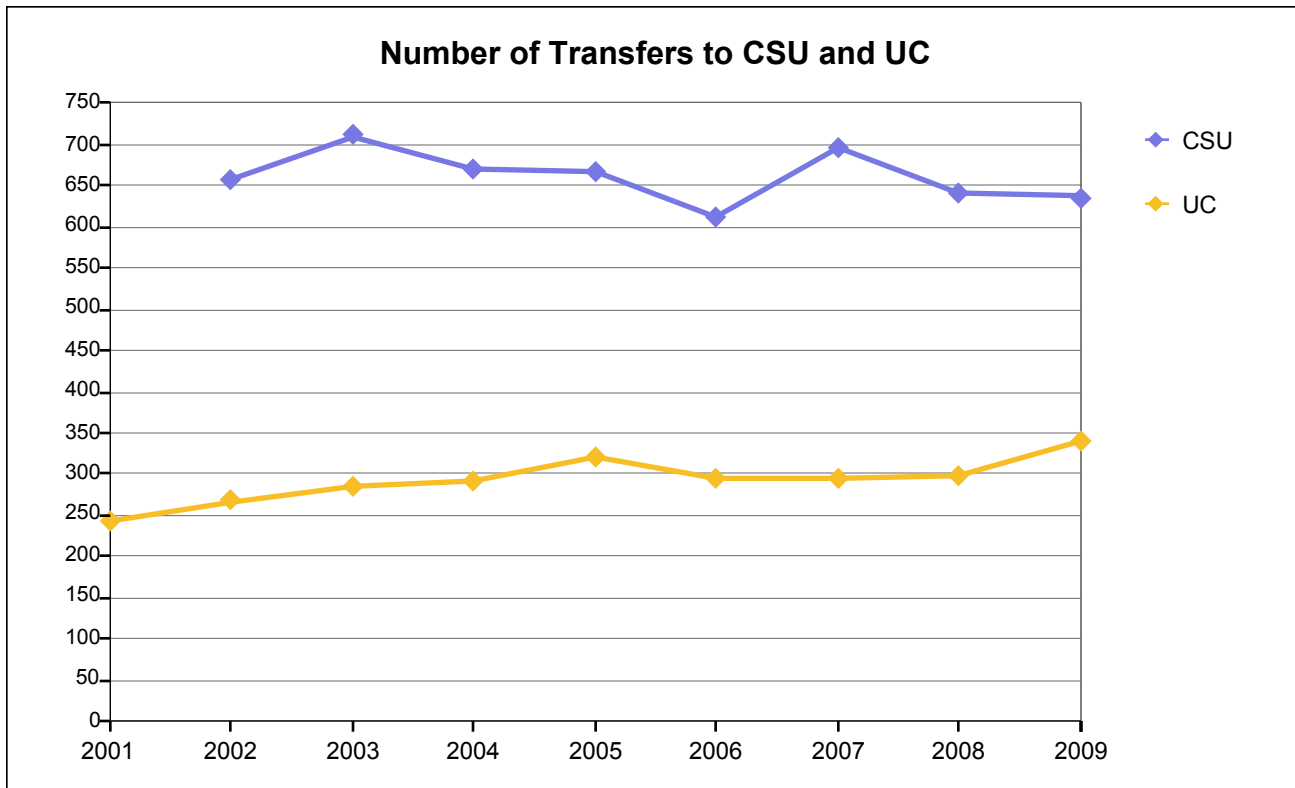
Age Group	01-02	02-03	03-04	04-05	05-06	06-07	07-08	08-09	09-10
15 - 19	28	13	16	11	14	19	11	7	5
20 - 24	80	118	111	113	152	108	89	97	122
25 - 29	125	103	140	122	97	91	103	86	119
30 - 34	115	75	90	103	90	87	97	63	87
35 - 54	287	321	352	314	348	310	375	268	288
55 and Ove	47	66	76	65	89	67	124	38	64
Unkwn	1	0	1	0	1	4	0	2	
<b>Total</b>	<b>683</b>	<b>696</b>	<b>786</b>	<b>728</b>	<b>791</b>	<b>686</b>	<b>799</b>	<b>561</b>	<b>685</b>

### Percentage Distribution of Certificates by Age Group

Age Group	01-02	02-03	03-04	04-05	05-06	06-07	07-08	08-09	09-10
15 - 19	4%	2%	2%	2%	2%	3%	1%	1%	1%
20 - 24	12%	17%	14%	16%	19%	16%	11%	17%	18%
25 - 29	18%	15%	18%	17%	12%	13%	13%	15%	17%
30 - 34	17%	11%	11%	14%	11%	13%	12%	11%	13%
35 - 54	42%	46%	45%	43%	44%	45%	47%	48%	42%
55 and Ove	7%	9%	10%	9%	11%	10%	16%	7%	9%
Unkwn	0%	0%	0%	0%	0%	1%	0%	0%	
<b>Total</b>	<b>100%</b>	<b>100%</b>	<b>100%</b>	<b>100%</b>	<b>100%</b>	<b>100%</b>	<b>100%</b>	<b>100%</b>	<b>100%</b>

Note: Age as of 12/15 of the award year.

**Peralta Community College District**



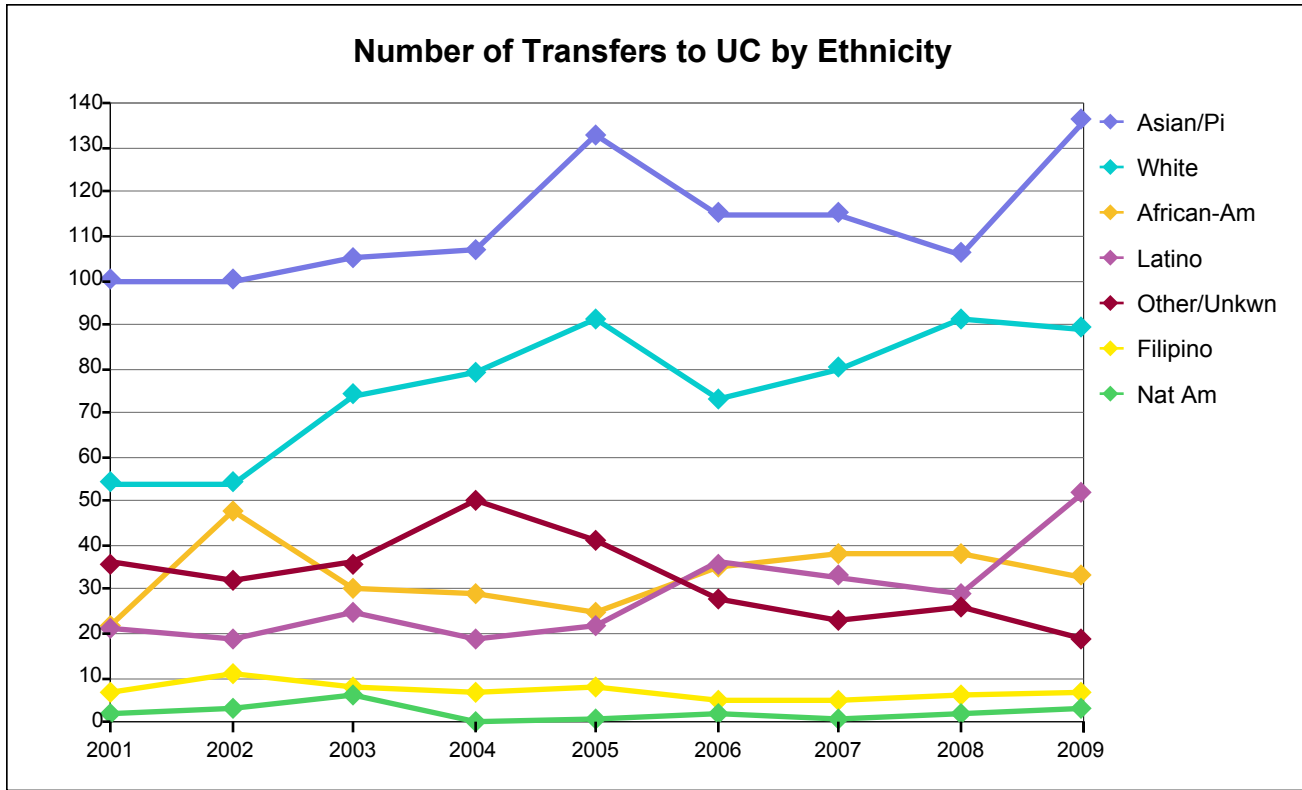
### Number of Transfers to CSU and UC by Academic Year Ending

System	2001	2002	2003	2004	2005	2006	2007	2008	2009
CSU		658	711	670	667	613	697	640	636
UC	242	267	284	291	321	294	295	298	339
Total	242	925	995	961	988	907	992	938	975

### Percentage Distribution of Transfers to CSU and UC

System	2001	2002	2003	2004	2005	2006	2007	2008	2009
CSU		71%	71%	70%	68%	68%	70%	68%	65%
UC	100%	29%	29%	30%	32%	32%	30%	32%	35%
Total	100%	100%	100%	100%	100%	100%	100%	100%	100%

**Peralta Community College District**



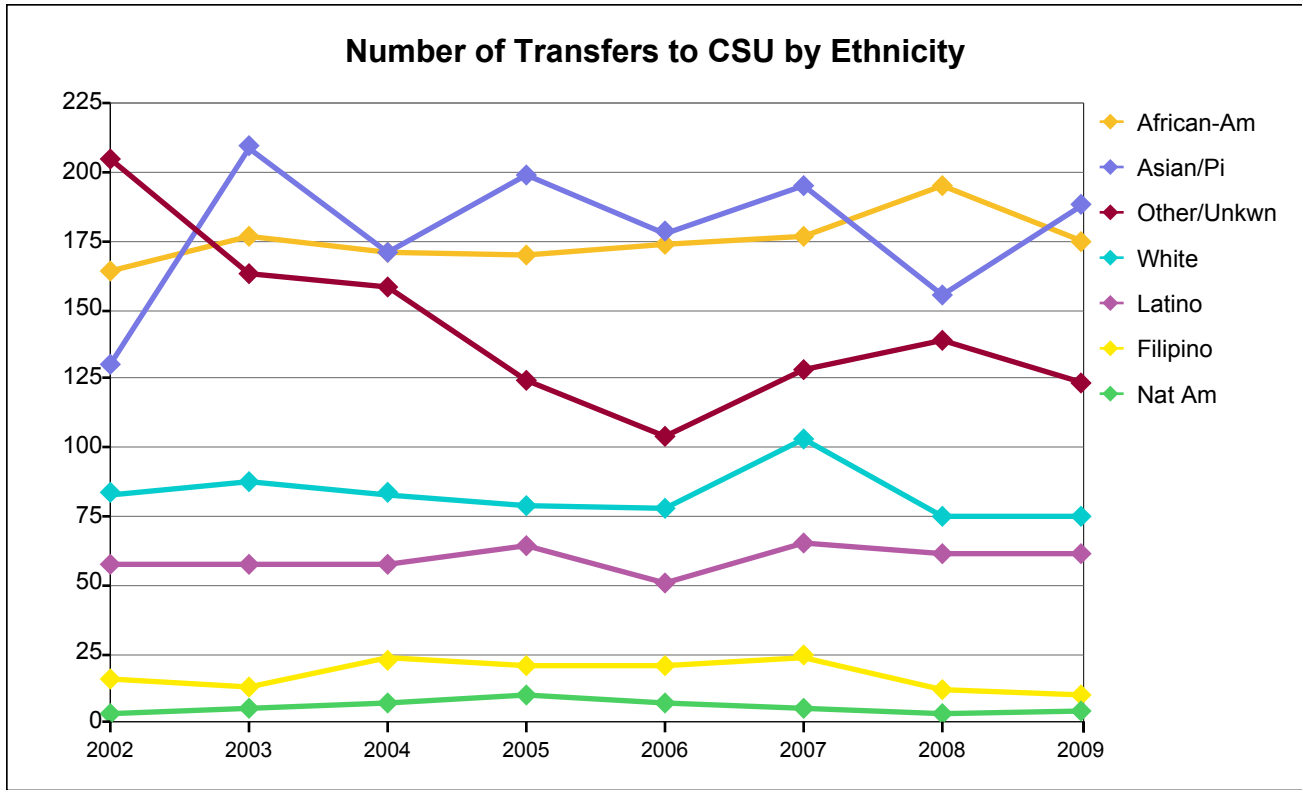
### Number of UC Transfers by Ethnicity

Academic Yr Ending	Asian/Pi	African-Am	Filipino	Latino	Nat Am	White	Other/Unk	Totals
2001	100	22	7	21	2	54	36	242
2002	100	48	11	19	3	54	32	267
2003	105	30	8	25	6	74	36	284
2004	107	29	7	19	0	79	50	291
2005	133	25	8	22	1	91	41	321
2006	115	35	5	36	2	73	28	294
2007	115	38	5	33	1	80	23	295
2008	106	38	6	29	2	91	26	298
2009	136	33	7	52	3	89	19	339

### Percentage Distribution of UC Transfers by Ethnicity

Academic Yr Ending	Asian/Pi	African-Am	Filipino	Latino	Nat Am	White	Other/Unk	Total
2001	41%	0%	3%	9%	1%	22%	15%	100%
2002	37%	0%	4%	7%	1%	20%	12%	100%
2003	37%	0%	3%	9%	2%	26%	13%	100%
2004	37%	0%	2%	7%	0%	27%	17%	100%
2005	41%	0%	2%	7%	0%	28%	13%	100%
2006	39%	0%	2%	12%	1%	25%	10%	100%
2007	39%	0%	2%	11%	0%	27%	8%	100%
2008	36%	0%	2%	10%	1%	31%	9%	100%
2009	40%	0%	2%	15%	1%	26%	6%	100%

**Peralta Community College District**



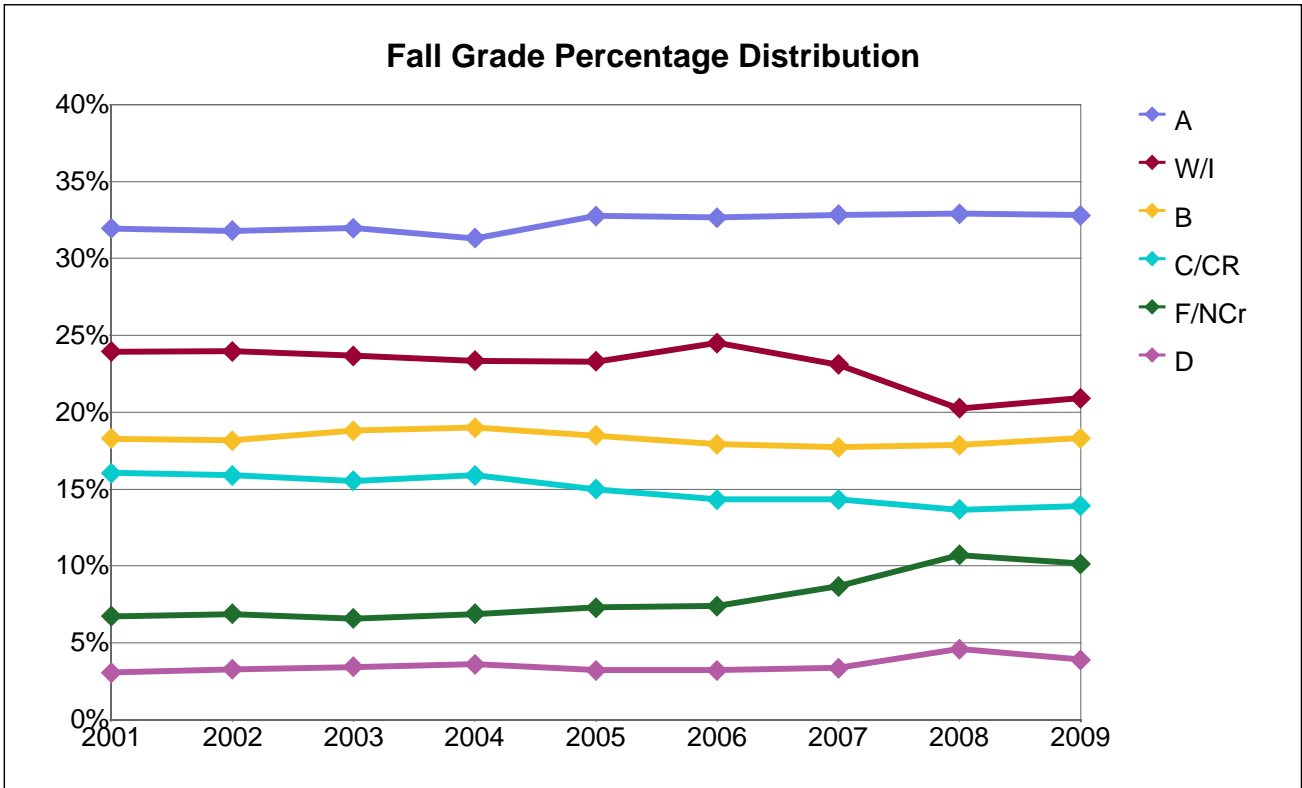
### Number of CSU Transfers by Ethnicity

Academic Yr Ending	Asian/Pi	African-Am	Filipino	Latino	Nat Am	White	Other/Unk	Totals
2002	130	164	16	57	3	83	205	658
2003	209	177	13	57	5	87	163	711
2004	171	171	23	57	7	83	158	670
2005	199	170	21	64	10	79	124	667
2006	178	174	21	51	7	78	104	613
2007	195	177	24	65	5	103	128	697
2008	155	195	12	61	3	75	139	640
2009	188	175	10	61	4	75	123	636

### Percentage Distribution of CSU Transfers by Ethnicity

Academic Yr Ending	Asian/Pi	African-Am	Filipino	Latino	Nat Am	White	Other/Unk	Total
2002	20%	0%	2%	9%	0%	13%	31%	100%
2003	29%	0%	2%	8%	1%	12%	23%	100%
2004	26%	0%	3%	9%	1%	12%	24%	100%
2005	30%	0%	3%	10%	1%	12%	19%	100%
2006	29%	0%	3%	8%	1%	13%	17%	100%
2007	28%	0%	3%	9%	1%	15%	18%	100%
2008	24%	0%	2%	10%	0%	12%	22%	100%
2009	30%	0%	2%	10%	1%	12%	19%	100%

**Peralta Community College District**



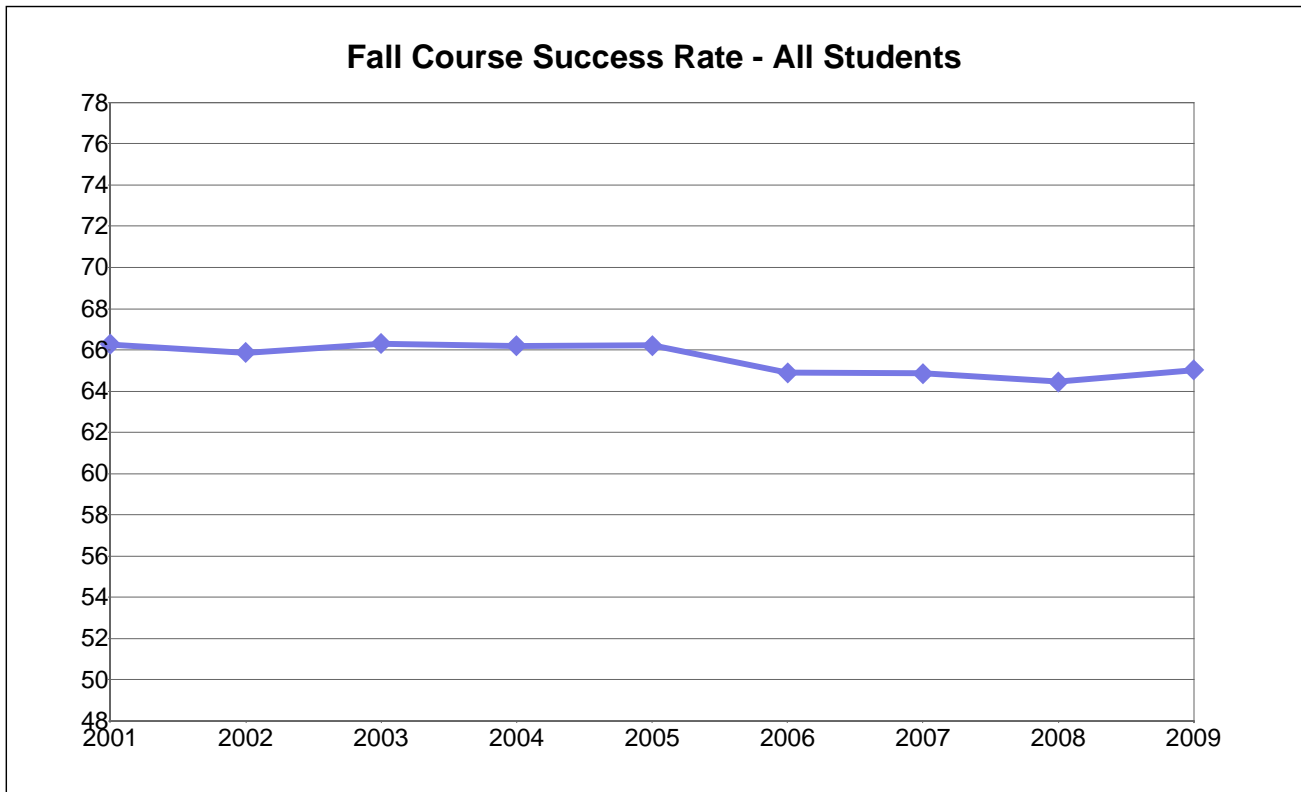
### Fall Grade Frequency Distribution

Grade	2001	2002	2003	2004	2005	2006	2007	2008	2009
A	19,380	20,972	20,344	18,898	19,238	20,728	21,765	23,080	25,642
B	11,089	11,979	11,966	11,458	10,845	11,367	11,742	12,531	14,311
C	6,855	7,705	7,464	7,195	6,799	6,851	7,073	8,052	8,915
CR	2,881	2,778	2,421	2,398	1,999	2,245	2,431	1,531	1,963
D	1,859	2,158	2,182	2,175	1,890	2,036	2,223	3,217	3,060
F	2,133	2,517	2,399	2,529	2,541	2,823	3,381	6,873	7,229
I	760	746	781	703	633	674	843	22	1,485
NCr	1,942	2,023	1,794	1,616	1,738	1,873	2,370	642	703
W	13,762	15,059	14,278	13,386	13,041	14,877	14,479	14,171	14,861
Total	60,661	65,937	63,629	60,358	58,724	63,474	66,307	70,119	78,169

### Fall Grade Percentage Distribution

Grade	2001	2002	2003	2004	2005	2006	2007	2008	2009
A	32%	32%	32%	31%	33%	33%	33%	33%	33%
B	18%	18%	19%	19%	18%	18%	18%	18%	18%
C	11%	12%	12%	12%	12%	11%	11%	11%	11%
CR	5%	4%	4%	4%	3%	4%	4%	2%	3%
D	3%	3%	3%	4%	3%	3%	3%	5%	4%
F	4%	4%	4%	4%	4%	4%	5%	10%	9%
I	1%	1%	1%	1%	1%	1%	1%	0%	2%
NCr	3%	3%	3%	3%	3%	3%	4%	1%	1%
W	23%	23%	22%	22%	22%	23%	22%	20%	19%
% of Column	100%	100%	100%	100%	100%	100%	100%	100%	100%

**Peralta Community College District**



### Number of Fall Total Grades Awarded - All Students

Dimension	2001	2002	2003	2004	2005	2006	2007	2008	2009
All Students	60,661	65,937	63,629	60,358	58,724	63,474	66,307	70,119	78,169

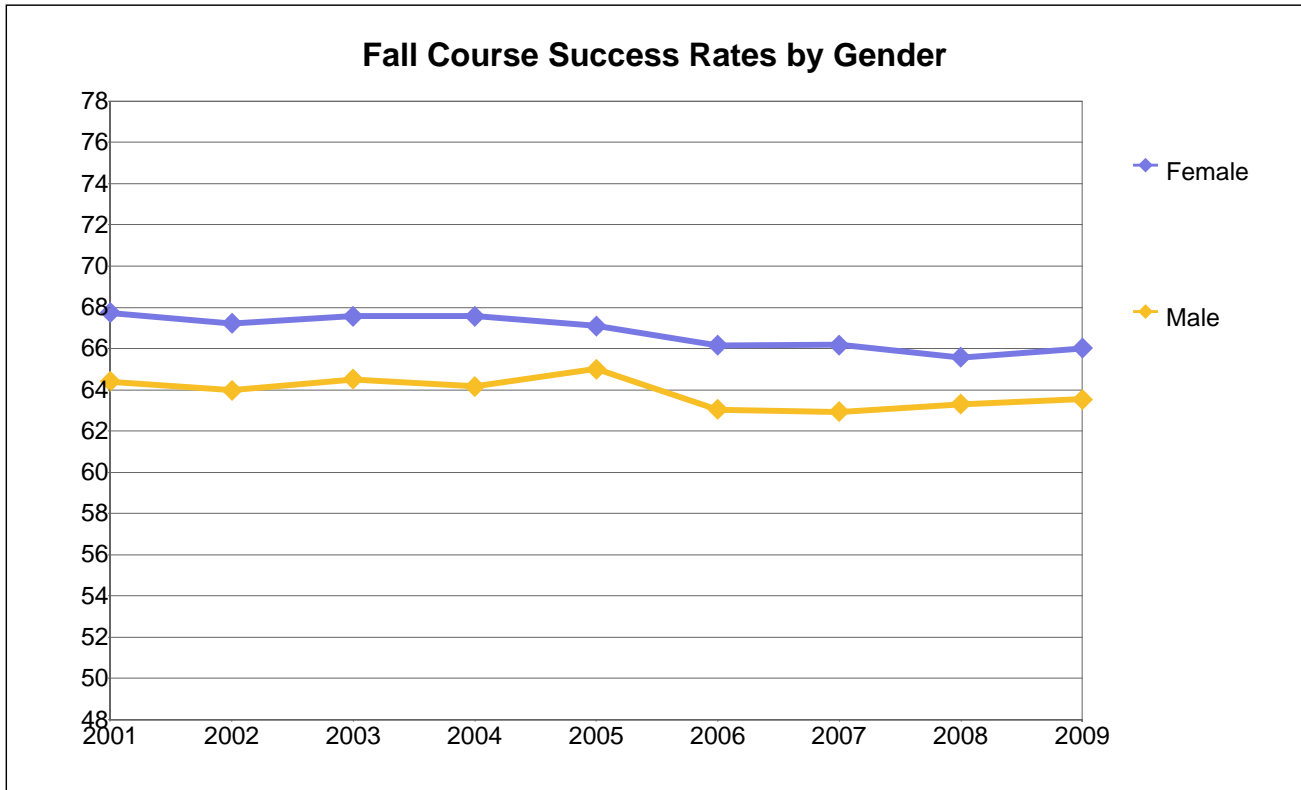
### Number of Fall Successful Grades - All Students

Dimension	2001	2002	2003	2004	2005	2006	2007	2008	2009
All Students	40,205	43,434	42,195	39,949	38,881	41,191	43,011	45,194	50,831

### Course Success Rates - All Students

Dimension	2001	2002	2003	2004	2005	2006	2007	2008	2009
All Students	66	66	66	66	66	65	65	64	65

**Peralta Community College District**



**Number of Fall Total Grades Awarded by Gender**

Gender	2001	2002	2003	2004	2005	2006	2007	2008	2009
Female	36,040	39,123	37,481	35,511	34,505	37,433	38,774	39,419	41,944
Male	23,717	25,772	24,945	23,337	23,259	25,477	27,208	28,687	32,810
Unkwn	904	1,042	1,203	1,510	960	564	325	2,013	3,415
Total	60,661	65,937	63,629	60,358	58,724	63,474	66,307	70,119	78,169

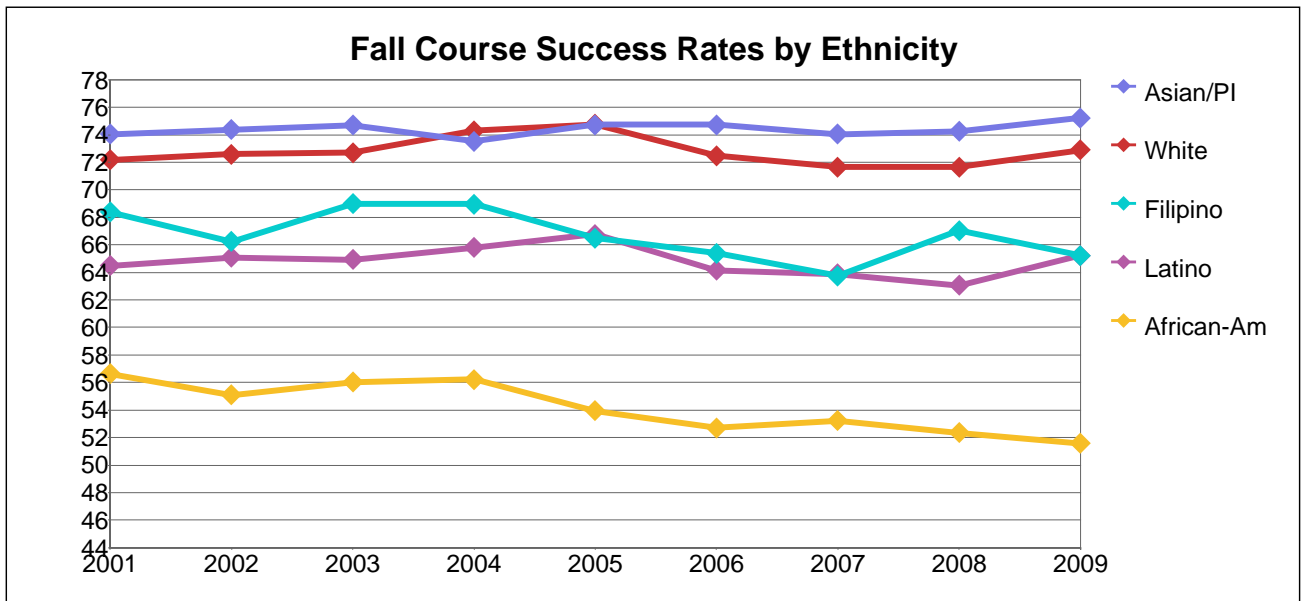
**Number of Fall Successful Grades by Gender**

Gender	2001	2002	2003	2004	2005	2006	2007	2008	2009
Female	24,410	26,296	25,325	23,994	23,148	24,766	25,663	25,848	27,686
Male	15,272	16,487	16,093	14,974	15,118	16,062	17,124	18,160	20,844
Unkwn	523	651	777	981	615	363	224	1,186	2,301
Total	40,205	43,434	42,195	39,949	38,881	41,191	43,011	45,194	50,831

**Course Success Rates by Gender**

Gender	2001	2002	2003	2004	2005	2006	2007	2008	2009
Female	68	67	68	68	67	66	66	66	66
Male	64	64	65	64	65	63	63	63	64
Unkwn	58	62	65	65	64	64	69	59	67
All Students	66	66	66	66	66	65	65	64	65

**Peralta Community College District**



**Number of Fall Total Grades Awarded by Ethnicity**

Ethnicity	2001	2002	2003	2004	2005	2006	2007	2008	2009
African-Am	18,866	21,013	20,339	19,616	19,092	20,381	20,449	20,732	19,308
Asian/PI	16,348	17,429	16,843	15,556	15,307	16,923	17,492	18,310	17,568
Filipino	1,598	1,858	1,870	1,689	1,632	1,627	1,589	1,714	1,389
Latino	7,696	8,453	8,110	7,908	7,583	8,085	8,755	9,366	8,204
Native Am	541	493	438	404	364	405	380	469	403
Other/Unkwn	4,397	4,919	4,650	5,457	5,165	5,580	6,108	8,374	21,729
White	11,215	11,772	11,379	9,728	9,581	10,473	11,534	11,169	9,568
Total	60,661	65,937	63,629	60,358	58,724	63,474	66,307	70,134	78,169

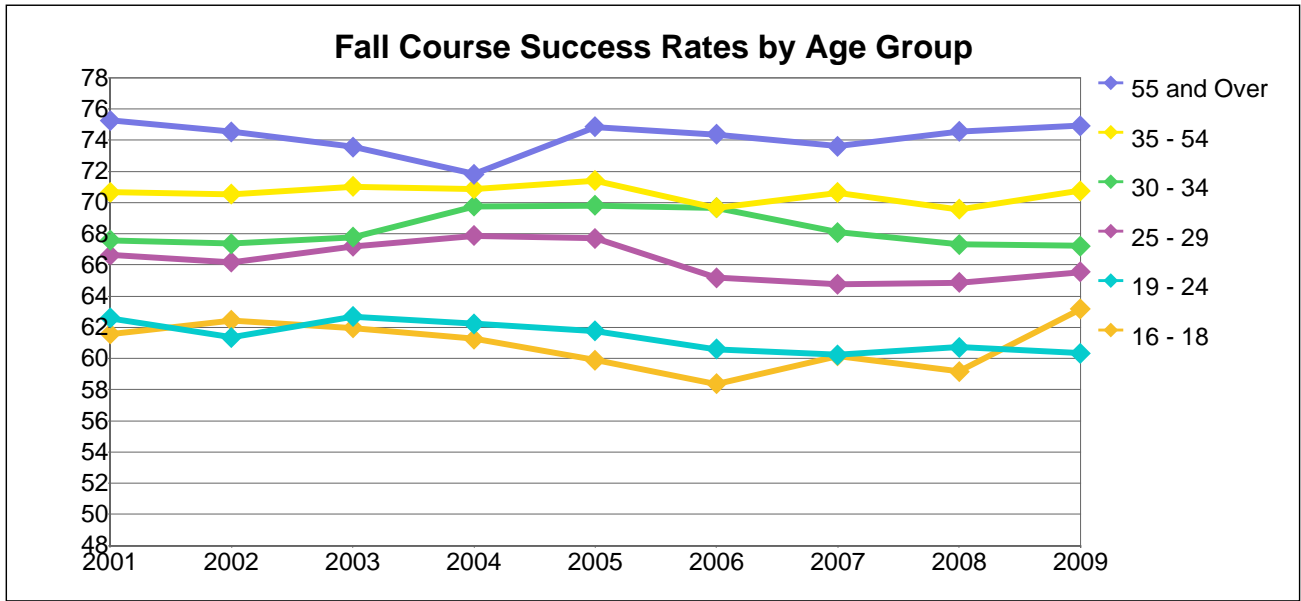
**Number of Fall Successful Grades by Ethnicity**

Ethnicity	2001	2002	2003	2004	2005	2006	2007	2008	2009
African-Am	10,683	11,575	11,395	11,028	10,299	10,741	10,886	10,854	9,960
Asian/PI	12,103	12,964	12,582	11,438	11,441	12,648	12,950	13,595	13,218
Filipino	1,093	1,231	1,290	1,165	1,085	1,064	1,013	1,149	906
Latino	4,963	5,503	5,266	5,203	5,064	5,187	5,593	5,906	5,352
Native Am	313	282	245	254	214	243	172	254	226
Other/Unkwn	2,956	3,335	3,143	3,634	3,616	3,718	4,133	5,433	14,194
White	8,094	8,544	8,274	7,227	7,162	7,590	8,264	8,003	6,975
Total	40,205	43,434	42,195	39,949	38,881	41,191	43,011	45,194	50,831

**Course Success Rates by Ethnicity**

Ethnicity	2001	2002	2003	2004	2005	2006	2007	2008	2009
African-Am	57	55	56	56	54	53	53	52	52
Asian/PI	74	74	75	74	75	75	74	74	75
Filipino	68	66	69	69	66	65	64	67	65
Latino	64	65	65	66	67	64	64	63	65
Native Am	58	57	56	63	59	60	45	54	56
Other/Unkwn	67	68	68	67	70	67	68	65	65
White	72	73	73	74	75	72	72	72	73
All Students	66	66	66	66	66	65	65	64	65

**Peralta Community College District**



**Number of Fall Total Grades Awarded by Age Group**

Age Group	2001	2002	2003	2004	2005	2006	2007	2008	2009
Under 16	918	898	327	292	492	539	870	777	679
16 - 18	6,263	7,054	6,160	6,116	6,117	7,057	7,717	8,575	9,557
19 - 24	21,546	23,217	23,974	22,856	22,202	23,203	24,672	27,014	31,258
25 - 29	8,772	9,565	9,077	8,750	8,460	9,015	9,352	10,081	11,062
30 - 34	6,212	6,807	6,431	6,172	5,675	6,096	5,967	6,094	6,573
35 - 54	13,773	14,985	14,578	13,237	12,686	13,753	13,621	13,748	14,971
55 and Over	3,067	3,389	3,082	2,935	3,092	3,806	4,108	3,830	4,067
Total	60,551	65,915	63,629	60,358	58,724	63,469	66,307	70,119	78,167

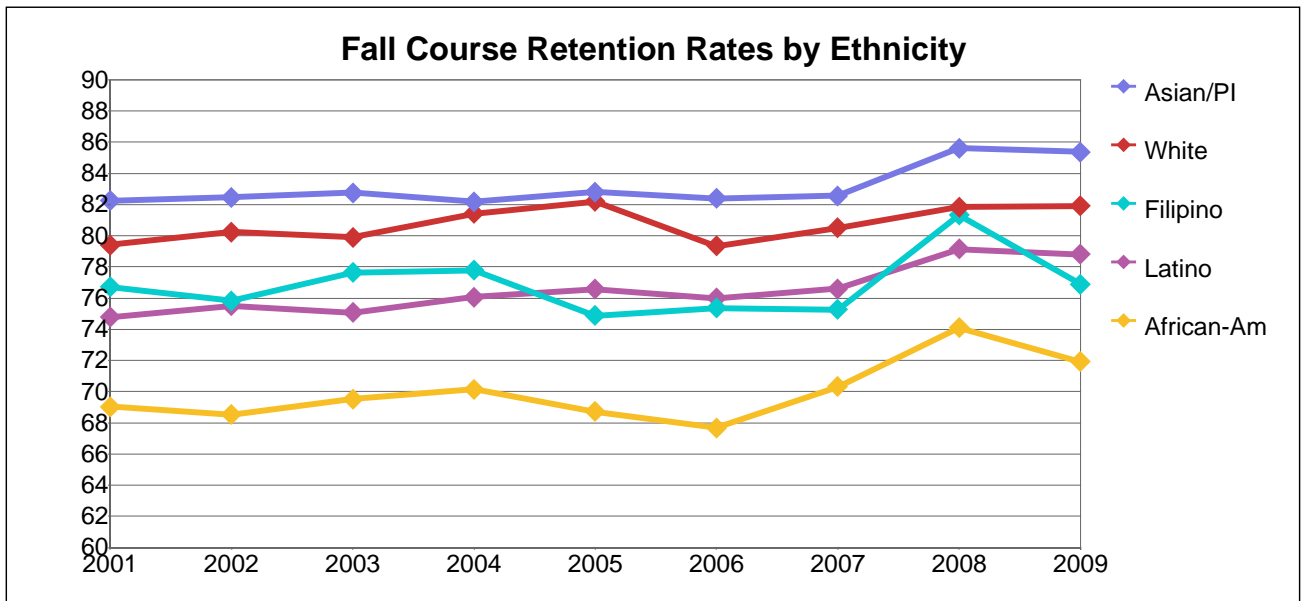
**Number of Fall Successful Grades by Age Group**

Age Group	2001	2002	2003	2004	2005	2006	2007	2008	2009
Under 16	751	756	277	247	443	470	743	661	625
16 - 18	3,856	4,404	3,816	3,747	3,664	4,119	4,642	5,073	6,038
19 - 24	13,486	14,244	15,027	14,222	13,711	14,062	14,862	16,401	18,858
25 - 29	5,846	6,329	6,098	5,938	5,727	5,877	6,056	6,538	7,250
30 - 34	4,198	4,586	4,358	4,305	3,962	4,246	4,063	4,102	4,418
35 - 54	9,730	10,569	10,352	9,382	9,060	9,582	9,621	9,563	10,593
55 and Over	2,308	2,526	2,267	2,108	2,314	2,830	3,024	2,856	3,047
Total	40,175	43,414	42,195	39,949	38,881	41,186	43,011	45,194	50,829

**Course Success Rates by Age Group**

Age Group	2001	2002	2003	2004	2005	2006	2007	2008	2009
Under 16	82	84	85	85	90	87	85	85	92
16 - 18	62	62	62	61	60	58	60	59	63
19 - 24	63	61	63	62	62	61	60	61	60
25 - 29	67	66	67	68	68	65	65	65	66
30 - 34	68	67	68	70	70	70	68	67	67
35 - 54	71	71	71	71	71	70	71	70	71
55 and Over	75	75	74	72	75	74	74	75	75
All Students	66	66	66	66	66	65	65	64	65

**Peralta Community College District**



**Number of Fall Total Grades Awarded by Ethnicity**

Ethnicity	2001	2002	2003	2004	2005	2006	2007	2008	2009
African-Am	18,866	21,013	20,339	19,616	19,092	20,381	20,449	20,732	19,308
Asian/PI	16,348	17,429	16,843	15,556	15,307	16,923	17,492	18,310	17,568
Filipino	1,598	1,858	1,870	1,689	1,632	1,627	1,589	1,714	1,389
Latino	7,696	8,453	8,110	7,908	7,583	8,085	8,755	9,366	8,204
Native Am	541	493	438	404	364	405	380	469	403
Other/Unkwn	4,397	4,919	4,650	5,457	5,165	5,580	6,108	8,374	21,729
White	11,215	11,772	11,379	9,728	9,581	10,473	11,534	11,169	9,568
Total	60,661	65,937	63,629	60,358	58,724	63,474	66,307	70,134	78,169

**Number of Fall Completion Grades by Ethnicity**

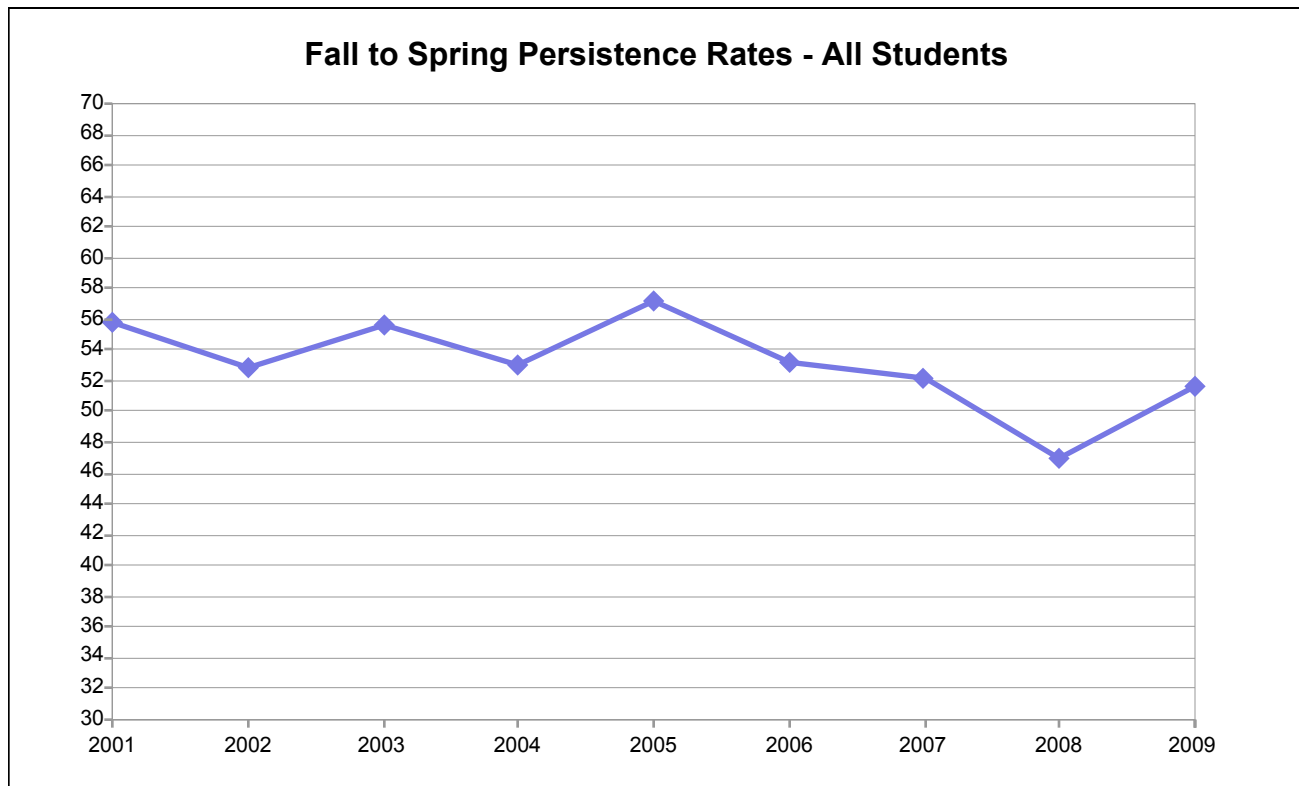
Ethnicity	2001	2002	2003	2004	2005	2006	2007	2008	2009
African-Am	13,026	14,399	14,139	13,759	13,121	13,792	14,378	15,361	13,885
Asian/PI	13,447	14,373	13,938	12,784	12,675	13,941	14,443	15,678	14,996
Filipino	1,226	1,409	1,452	1,314	1,222	1,226	1,196	1,394	1,068
Latino	5,755	6,382	6,088	6,016	5,806	6,145	6,707	7,412	6,466
Native Am	374	341	304	305	258	277	228	346	280
Other/Unkwn	3,406	3,782	3,559	4,170	4,092	4,234	4,749	6,594	17,291
White	8,905	9,446	9,090	7,921	7,876	8,308	9,284	9,141	7,837
Total	46,139	50,132	48,570	46,269	45,050	47,923	50,985	55,926	61,823

**Course Retention Rates by Ethnicity**

Ethnicity	2001	2002	2003	2004	2005	2006	2007	2008	2009
African-Am	69	69	70	70	69	68	70	74	72
Asian/PI	82	82	83	82	83	82	83	86	85
Filipino	77	76	78	78	75	75	75	81	77
Latino	75	75	75	76	77	76	77	79	79
Native Am	69	69	69	75	71	68	60	74	69
Other/Unkwn	77	77	77	76	79	76	78	79	80
White	79	80	80	81	82	79	80	82	82
All Students	76	76	76	77	77	76	77	80	79

Retention is defined as the number of grades of A, B, C, CR, D, NC, or F divided by the total number of official grades including official W's.

**Peralta Community College District**



**Number Enrolled at Fall Census - All Students**

Dimension	2001	2002	2003	2004	2005	2006	2007	2008	2009
All Students	26,188	28,373	26,807	24,937	24,351	26,161	27,347	28,230	30,414

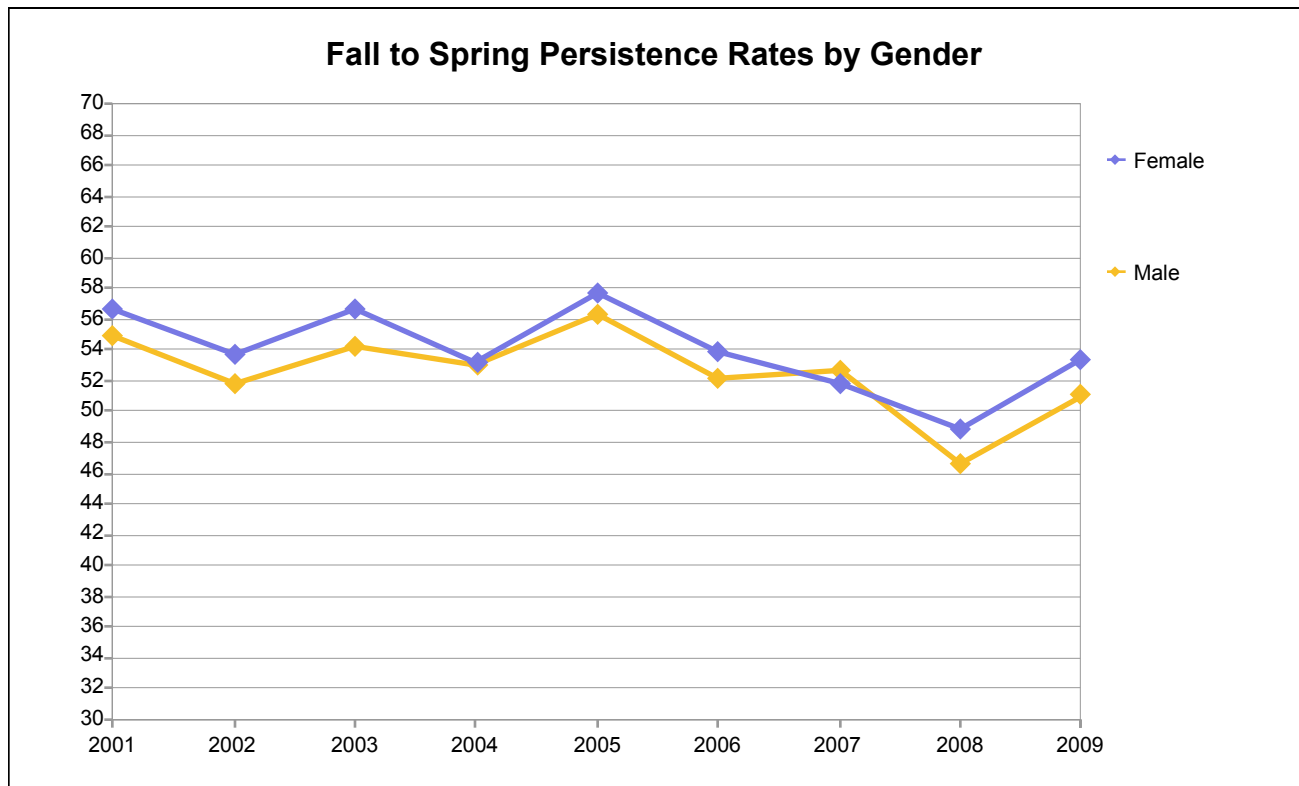
**Number of Fall Persisting to Spring Opening Day - All Students**

Dimension	2001	2002	2003	2004	2005	2006	2007	2008	2009
All Students	14,613	14,982	14,907	13,207	13,915	13,914	14,261	13,264	15,698

**Fall to Spring Persistence Rates - All Students**

Dimension	2001	2002	2003	2004	2005	2006	2007	2008	2009
All Students	56	53	56	53	57	53	52	47	52

**Peralta Community College District**



**Number Enrolled at Fall Census by Gender**

Gender	2001	2002	2003	2004	2005	2006	2007	2008	2009
Female	15,441	16,866	15,845	14,819	14,514	15,600	16,397	15,698	16,139
Male	10,292	10,942	10,341	9,444	9,443	10,309	10,798	10,917	11,816
Unkwn	455	565	621	674	394	252	152	1,615	2,459
Total	26,188	28,373	26,807	24,937	24,351	26,161	27,347	28,230	30,414

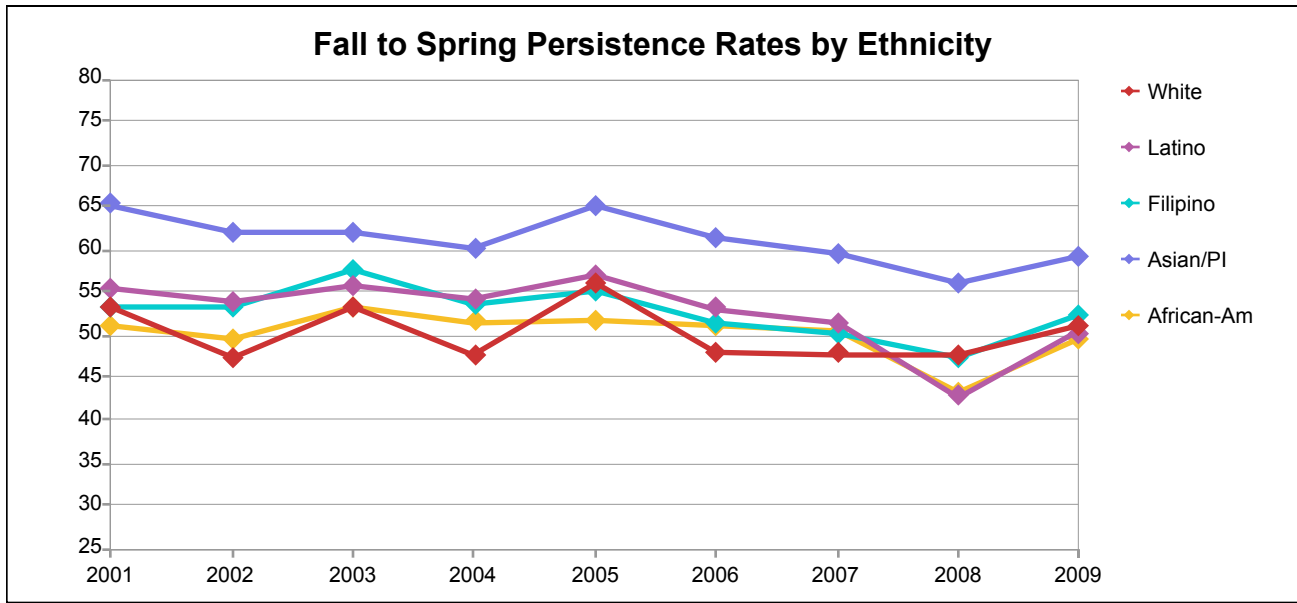
**Number of Fall Persisting to Spring Opening Day by Gender**

Gender	2001	2002	2003	2004	2005	2006	2007	2008	2009
Female	8,760	9,062	8,979	7,877	8,382	8,410	8,507	7,670	8,618
Male	5,650	5,663	5,609	5,009	5,313	5,371	5,682	5,083	6,028
Unkwn	203	257	319	321	220	133	72	511	1,052
Total	14,613	14,982	14,907	13,207	13,915	13,914	14,261	13,264	15,698

**Fall to Spring Persistence Rates by Gender**

Gender	2001	2002	2003	2004	2005	2006	2007	2008	2009
Female	57	54	57	53	58	54	52	49	53
Male	55	52	54	53	56	52	53	47	51
Unkwn	45	45	51	48	56	53	47	32	43
Total	56	53	56	53	57	53	52	47	52

## Peralta Community College District



**Number Enrolled at Fall Census by Ethnicity**

Ethnicity	2001	2002	2003	2004	2005	2006	2007	2008	2009
African-Am	7,550	8,231	7,782	7,392	7,300	7,676	7,704	7,711	6,799
Asian/PI	6,347	7,048	6,709	6,190	6,082	6,567	6,824	6,812	6,121
Filipino	715	788	760	727	686	711	675	704	571
Latino	3,437	3,731	3,487	3,294	3,228	3,504	3,802	4,001	3,183
Native Am	209	196	178	165	146	172	163	433	159
Other/Unkwn	2,383	2,654	2,588	2,421	2,269	2,432	2,682	3,141	9,292
White	5,547	5,725	5,303	4,748	4,640	5,099	5,497	5,428	4,289
Count Distinct	26,188	28,373	26,807	24,937	24,351	26,161	27,347	28,230	30,414

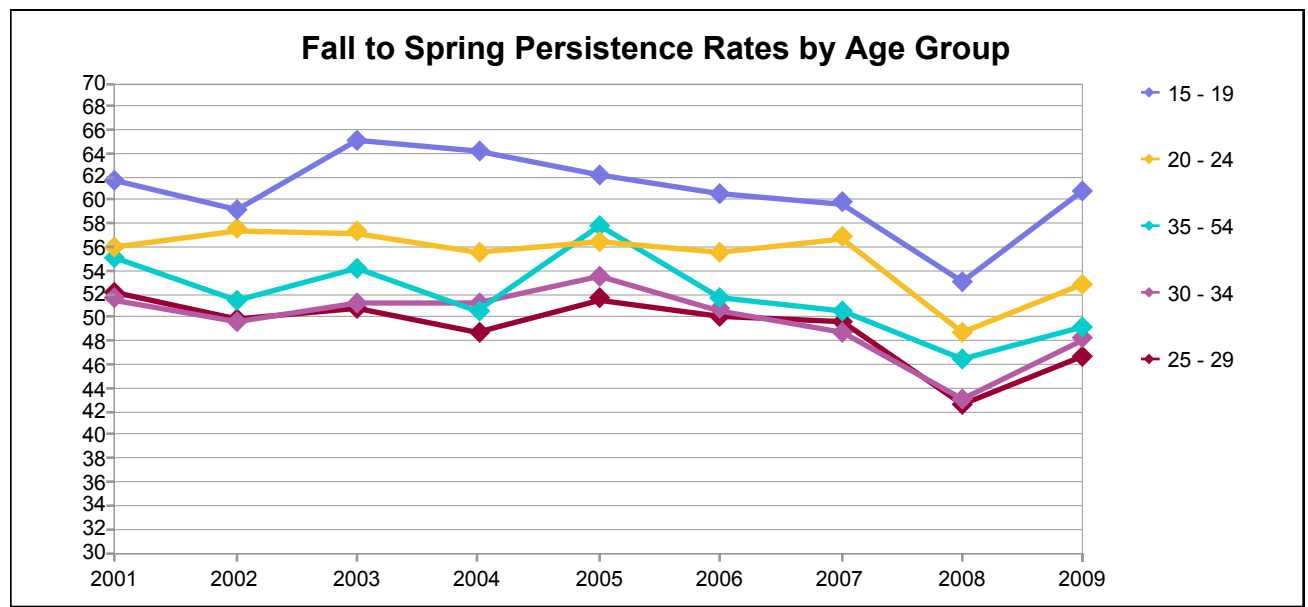
**Number of Fall Persisting to Spring Opening Day by Ethnicity**

Ethnicity	2001	2002	2003	2004	2005	2006	2007	2008	2009
African-Am	3,854	4,081	4,141	3,812	3,774	3,916	3,895	3,335	3,361
Asian/PI	4,145	4,370	4,171	3,717	3,961	4,038	4,063	3,816	3,632
Filipino	381	420	438	390	378	366	338	334	299
Latino	1,907	2,012	1,945	1,787	1,839	1,860	1,958	1,712	1,600
Native Am	110	101	88	85	80	89	68	222	77
Other/Unkwn	1,258	1,294	1,295	1,159	1,274	1,207	1,314	1,255	4,534
White	2,958	2,704	2,829	2,257	2,609	2,438	2,625	2,590	2,195
Total	14,613	14,982	14,907	13,207	13,915	13,914	14,261	13,264	15,698

**Fall to Spring Persistence Rates by Ethnicity**

Ethnicity	2001	2002	2003	2004	2005	2006	2007	2008	2009
African-Am	51	50	53	52	52	51	51	43	49
Asian/PI	65	62	62	60	65	61	60	56	59
Filipino	53	53	58	54	55	51	50	47	52
Latino	55	54	56	54	57	53	51	43	50
Native Am	53	52	49	52	55	52	42	51	48
Other/Unkwn	53	49	50	48	56	50	49	40	49
White	53	47	53	48	56	48	48	48	51
All	56	53	56	53	57	53	52	47	52

## Peralta Community College District



**Number Enrolled at Fall Census by Age Group**

Age Group	2001	2002	2003	2004	2005	2006	2007	2008	2009
15 - 19	3,985	4,428	3,835	3,660	3,808	4,232	4,630	5,078	5,451
20 - 24	6,136	6,543	6,756	6,399	6,132	6,364	6,643	7,163	8,328
25 - 29	4,036	4,308	4,098	3,844	3,768	3,934	4,134	4,333	4,706
30 - 34	2,949	3,258	3,045	2,813	2,606	2,750	2,746	2,694	2,816
35 - 54	6,921	7,477	7,152	6,381	6,114	6,545	6,511	6,330	6,534
55 and Over	1,769	1,985	1,746	1,687	1,727	2,094	2,281	2,245	2,301
Other/Unkwn	392	374	175	153	196	242	402	387	278
<b>Total</b>	<b>26,188</b>	<b>28,373</b>	<b>26,807</b>	<b>24,937</b>	<b>24,351</b>	<b>26,161</b>	<b>27,347</b>	<b>28,230</b>	<b>30,414</b>

**Number of Fall Persisting to Spring Opening Day by Age Group**

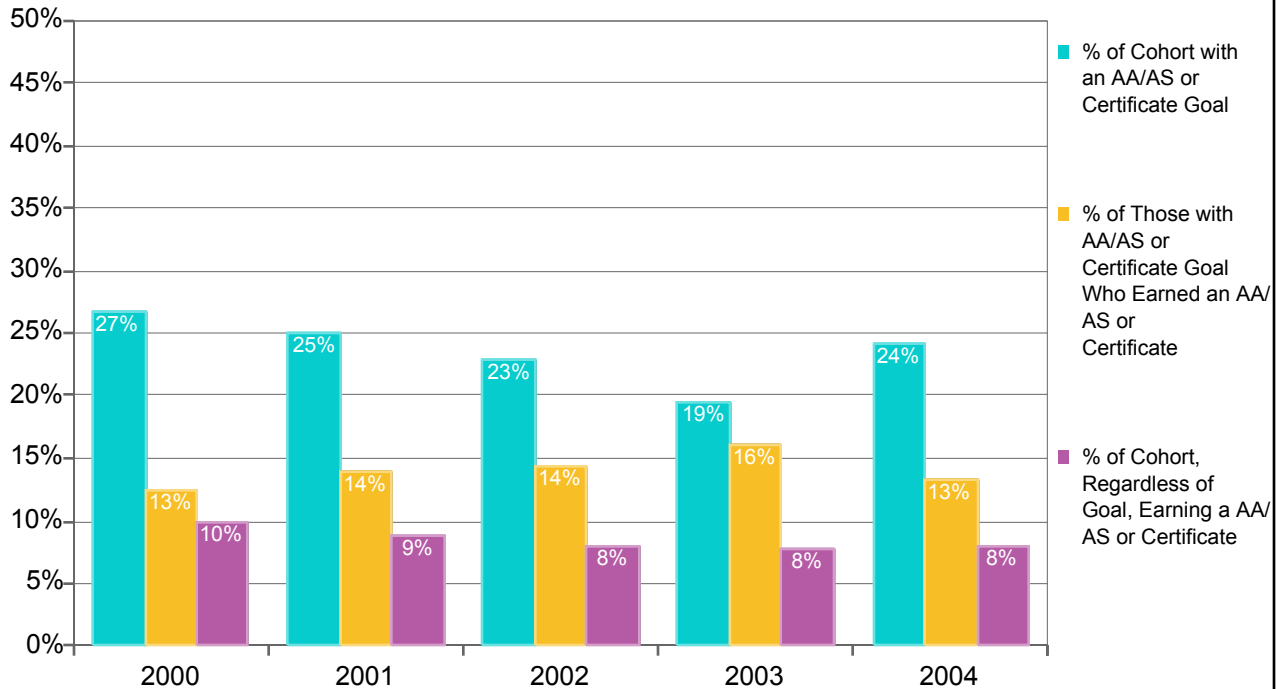
Age Group	2001	2002	2003	2004	2005	2006	2007	2008	2009
15 - 19	2,459	2,616	2,499	2,349	2,364	2,561	2,767	2,697	3,310
20 - 24	3,442	3,763	3,869	3,560	3,469	3,535	3,774	3,487	4,405
25 - 29	2,104	2,150	2,082	1,870	1,944	1,973	2,053	1,847	2,201
30 - 34	1,521	1,620	1,562	1,441	1,396	1,394	1,340	1,161	1,356
35 - 54	3,815	3,841	3,877	3,230	3,541	3,389	3,288	2,941	3,211
55 and Over	1,038	883	992	743	1,084	941	972	1,117	1,185
Other/Unkwn	234	109	26	14	117	121	67	14	30
<b>Total</b>	<b>14,613</b>	<b>14,982</b>	<b>14,907</b>	<b>13,207</b>	<b>13,915</b>	<b>13,914</b>	<b>14,261</b>	<b>13,264</b>	<b>15,698</b>

**Fall to Spring Persistence Rates by Age Group**

Age Group	2001	2002	2003	2004	2005	2006	2007	2008	2009
15 - 19	62	59	65	64	62	61	60	53	61
20 - 24	56	58	57	56	57	56	57	49	53
25 - 29	52	50	51	49	52	50	50	43	47
30 - 34	52	50	51	51	54	51	49	43	48
35 - 54	55	51	54	51	58	52	50	46	49
55 and Over	59	44	57	44	63	45	43	50	51
Other/Unkwn	60	29	15	9	60	50	17	4	11
<b>Total</b>	<b>56</b>	<b>53</b>	<b>56</b>	<b>53</b>	<b>57</b>	<b>53</b>	<b>52</b>	<b>47</b>	<b>52</b>

**Peralta Community College District**

**Percentages of the Fall First-Time College Cohorts with AA/AS or Certificate Goals, Those with Goals Earning an Award, and Those Earning an Award Regardless of Goal within Six Years**

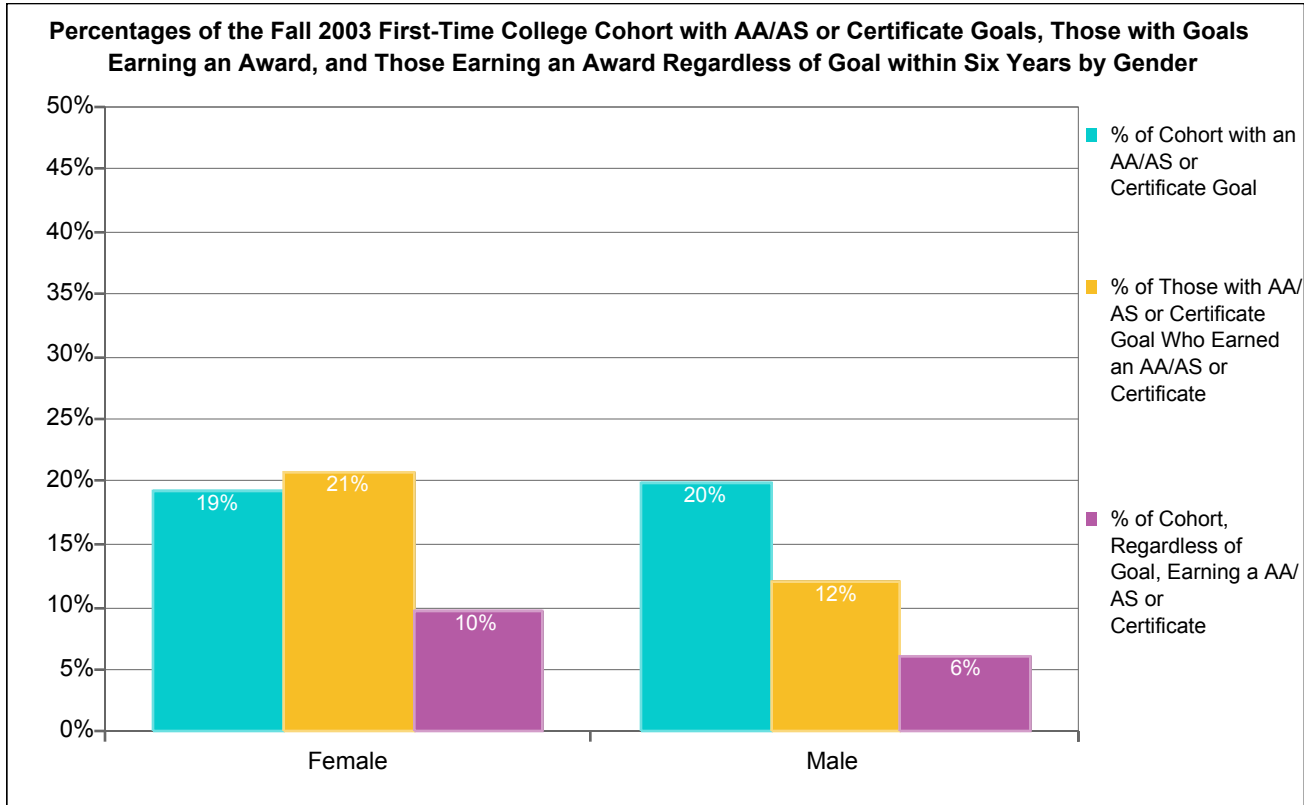


**Count and Percentage Tracking of the Fall Matriculated First-Time College Cohorts for AA/AS Degree or Certificate Goals and AA/AS or Certificate Awards within Six Years**

Fall First-time College Cohort	Count of Fall Cohort	Count of Cohort with AA/AS or Certificate Goal	Percent of Cohort with AA/AS or Certificate Goal	Count of Cohort with AA/AS or Certificate Goal Who Earned an AA/AS or Certificate	Percent of Those with AA/AS or Certificate Goal Who Earned an AA/AS or Certificate	Count of Cohort, Regardless of Goal, Earning a Degree or Certificate	Percent of Cohort, Regardless of Goal, Earning a Degree or Certificate
2000	1,164	312	27%	39	13%	116	10%
2001	1,344	336	25%	47	14%	119	9%
2002	1,426	325	23%	47	14%	115	8%
2003	1,531	297	19%	48	16%	119	8%
2004	1,333	323	24%	43	13%	106	8%
<b>Totals</b>	<b>6,798</b>	<b>1,593</b>	<b>23%</b>	<b>224</b>	<b>14%</b>	<b>575</b>	<b>8%</b>

Note: The cohort consists of Fall students enrolled at census with an Enrollment Status of "First-Time College" and with a Matriculation Status of "Matriculated." The student's goal is the Informed or Matriculation Goal with values of 1, 3, 4, or 5, i.e., the goals of Transfer with an AA/AS, AA/AS General Education, AA/AS Vocational, or Certificate. Students are individually tracked to determine the number of the cohort, the number of those with the indicated goals who earn an AA/AS degree or Certificate at any Peralta CCD college, and the number who, regardless of goal, earn an AA/AS degree or Certificate at any Peralta CCD college within the indicated number of years.

**Peralta Community College District**

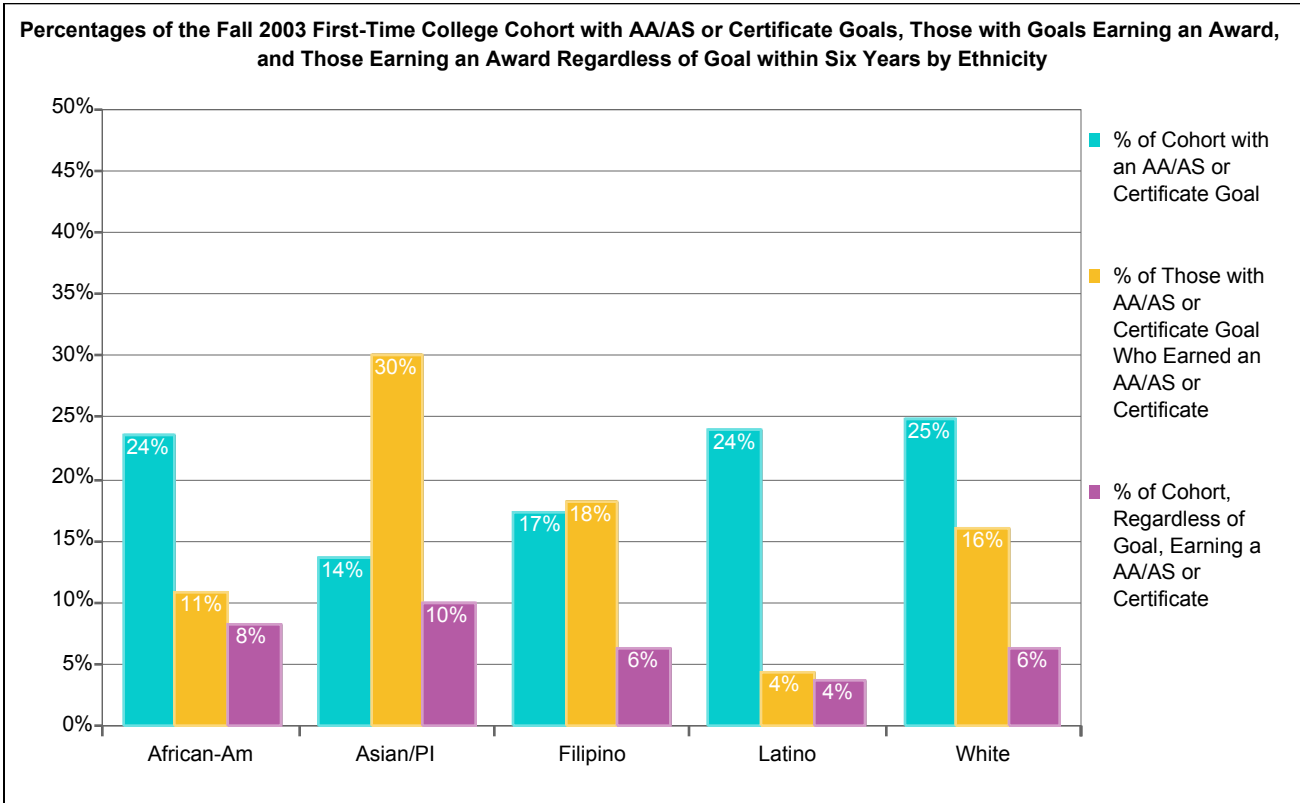


**Count and Percentage Tracking of the Fall 2003 Matriculated First-Time College Cohort for AA/AS Degree or Certificate Goals and AA/AS or Certificate Awards within Six Years by Gender**

Gender	Count of Fall Cohort	Count of Cohort with AA/AS or Certificate Goal	Percent of Cohort with AA/AS or Certificate Goal	Count of Cohort with AA/AS or Certificate Goal Who Earned an AA/AS or Certificate	Percent of Those with AA/AS or Certificate Goal Who Earned an AA/AS or Certificate	Count of Cohort, Regardless of Goal, Earning a Degree or Certificate	Percent of Cohort, Regardless of Goal, Earning a Degree or Certificate
Female	771	149	19%	31	21%	74	10%
Male	718	143	20%	17	12%	44	6%
Unkwn	42	5	12%	0	0%	1	2%
<b>Totals</b>	<b>1,531</b>	<b>297</b>	<b>19%</b>	<b>48</b>	<b>16%</b>	<b>119</b>	<b>8%</b>

Note: The cohort consists of Fall students enrolled at census with an Enrollment Status of "First-Time College" and with a Matriculation Status of "Matriculated." The student's goal is the Informed or Matriculation Goal with values of 1, 3, 4, or 5, i.e., the goals of Transfer with an AA/AS, AA/AS General Education, AA/AS Vocational, or Certificate. Students are individually tracked to determine the number of the cohort, the number of those with the indicated goals who earn an AA/AS degree or Certificate at any Peralta CCD college, and the number who, regardless of goal, earn an AA/AS degree or Certificate at any Peralta CCD college within the indicated number of years.

## Peralta Community College District

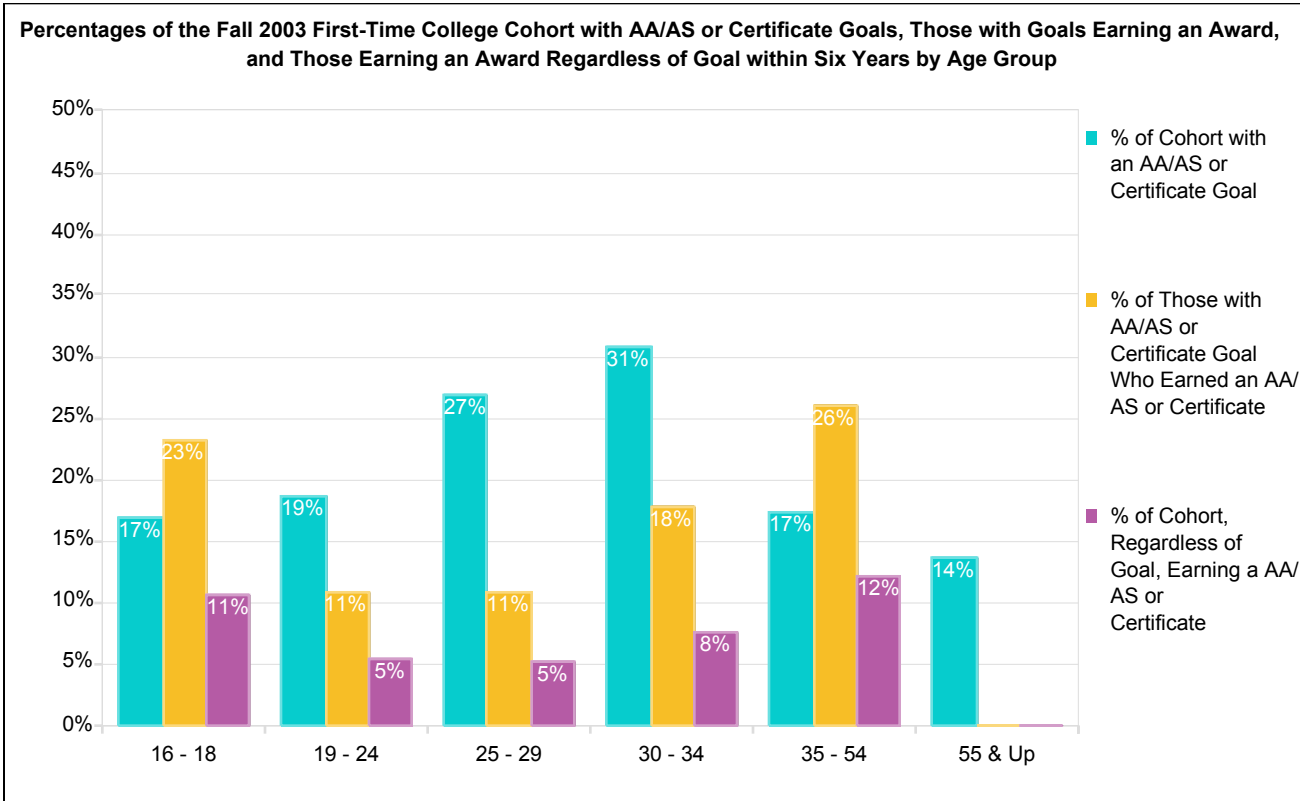


**Count and Percentage Tracking of the Fall 2003 Matriculated First-Time College Cohort for AA/AS Degree or Certificate Goals and AA/AS or Certificate Awards within Six Years by Ethnicity**

Ethnicity	Count of Fall Cohort	Count of Cohort with AA/AS or Certificate Goal	Percent of Cohort with AA/AS or Certificate Goal	Count of Cohort with AA/AS or Certificate Goal Who Earned an AA/AS or Certificate	Percent of Those with AA/AS or Certificate Goal Who Earned an AA/AS or Certificate	Count of Cohort, Regardless of Goal, Earning a Degree or Certificate	Percent of Cohort, Regardless of Goal, Earning a Degree or Certificate
African-Am	352	83	24%	9	11%	29	8%
Asian/PI	586	80	14%	24	30%	59	10%
Filipino	63	11	17%	2	18%	4	6%
Latino	192	46	24%	2	4%	7	4%
Native Am	7	2	29%	0	0%	0	0%
Other/Unkw	106	19	18%	2	11%	6	6%
White	225	56	25%	9	16%	14	6%
<b>Totals</b>	<b>1,531</b>	<b>297</b>	<b>19%</b>	<b>48</b>	<b>16%</b>	<b>119</b>	<b>8%</b>

Note: The cohort consists of Fall students enrolled at census with an Enrollment Status of "First-Time College" and with a Matriculation Status of "Matriculated." The student's goal is the Informed or Matriculation Goal with values of 1, 3, 4, or 5, i.e., the goals of Transfer with an AA/AS, AA/AS General Education, AA/AS Vocational, or Certificate. Students are individually tracked to determine the number of the cohort, the number of those with the indicated goals who earn an AA/AS degree or Certificate at any Peralta CCD college, and the number who, regardless of goal, earn an AA/AS degree or Certificate at any Peralta CCD college within the indicated number of years.

## Peralta Community College District



**Count and Percentage Tracking of the Fall 2003 Matriculated First-Time College Cohort for AA/AS Degree or Certificate Goals and AA/AS or Certificate Awards within Six Years by Age Group**

Age Group	Count of Fall Cohort	Count of Cohort with AA/AS or Certificate Goal	Percent of Cohort with AA/AS or Certificate Goal	Count of Cohort with AA/AS or Certificate Goal Who Earned an AA/AS or Certificate	Percent of Those with AA/AS or Certificate Goal Who Earned an AA/AS or Certificate	Count of Cohort, Regardless of Goal, Earning a Degree or Certificate	Percent of Cohort, Regardless of Goal, Earning a Degree or Certificate
16 - 18	507	86	17%	20	23%	54	11%
19 - 24	641	120	19%	13	11%	35	5%
25 - 29	137	37	27%	4	11%	7	5%
30 - 34	91	28	31%	5	18%	7	8%
35 - 54	133	23	17%	6	26%	16	12%
55 & Up	22	3	14%	0	0%	0	0%
<b>Totals</b>	<b>1,531</b>	<b>297</b>	<b>19%</b>	<b>48</b>	<b>16%</b>	<b>119</b>	<b>8%</b>

Note: The cohort consists of Fall students enrolled at census with an Enrollment Status of "First-Time College" and with a Matriculation Status of "Matriculated." The student's goal is the Informed or Matriculation Goal with values of 1, 3, 4, or 5, i.e., the goals of Transfer with an AA/AS, AA/AS General Education, AA/AS Vocational, or Certificate. Students are individually tracked to determine the number of the cohort, the number of those with the indicated goals who earn an AA/AS degree or Certificate at any Peralta CCD college, and the number who, regardless of goal, earn an AA/AS degree or Certificate at any Peralta CCD college within the indicated number of years.