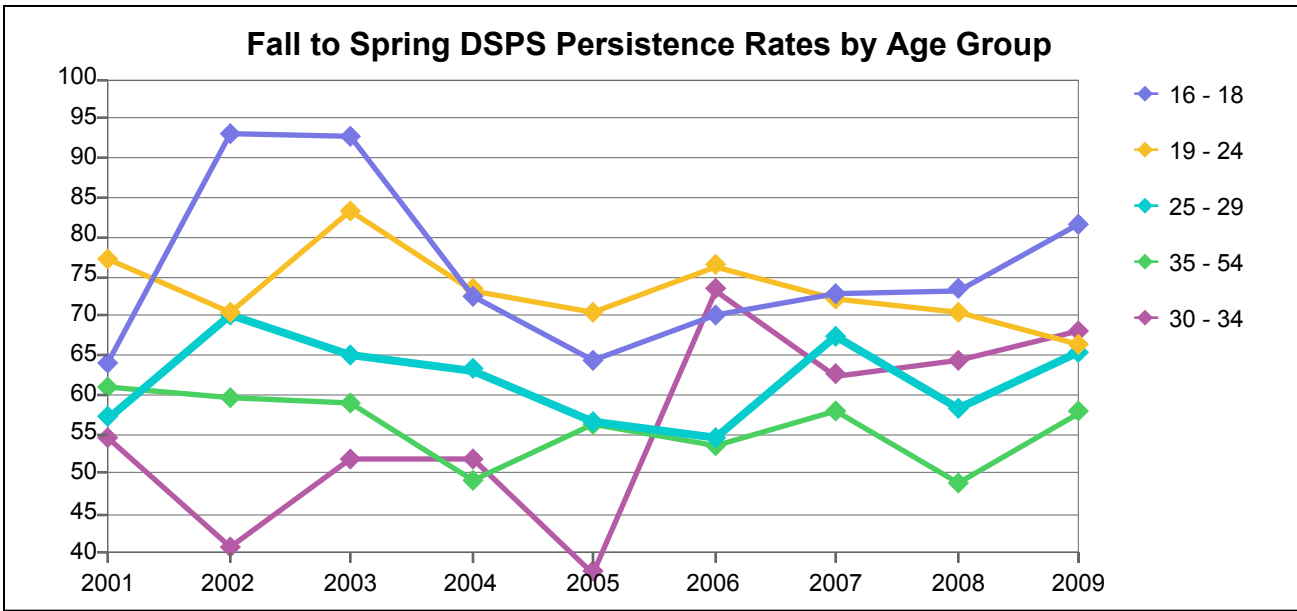


College of Alameda



DSPS Headcount at Fall Census by Age Group

Age Group	2001	2002	2003	2004	2005	2006	2007	2008	2009
16 - 18	25	29	28	29	28	30	33	30	38
19 - 24	110	118	126	150	136	127	118	102	131
25 - 29	28	20	20	19	30	33	40	43	46
30 - 34	22	27	27	27	16	15	16	14	25
35 - 54	97	109	100	114	121	112	107	82	83
55 - 64	15	26	21	17	21	26	25	24	27
65 and Over	2	4	4	5	1	1	1	3	2
Total	299	333	326	361	353	344	340	298	352

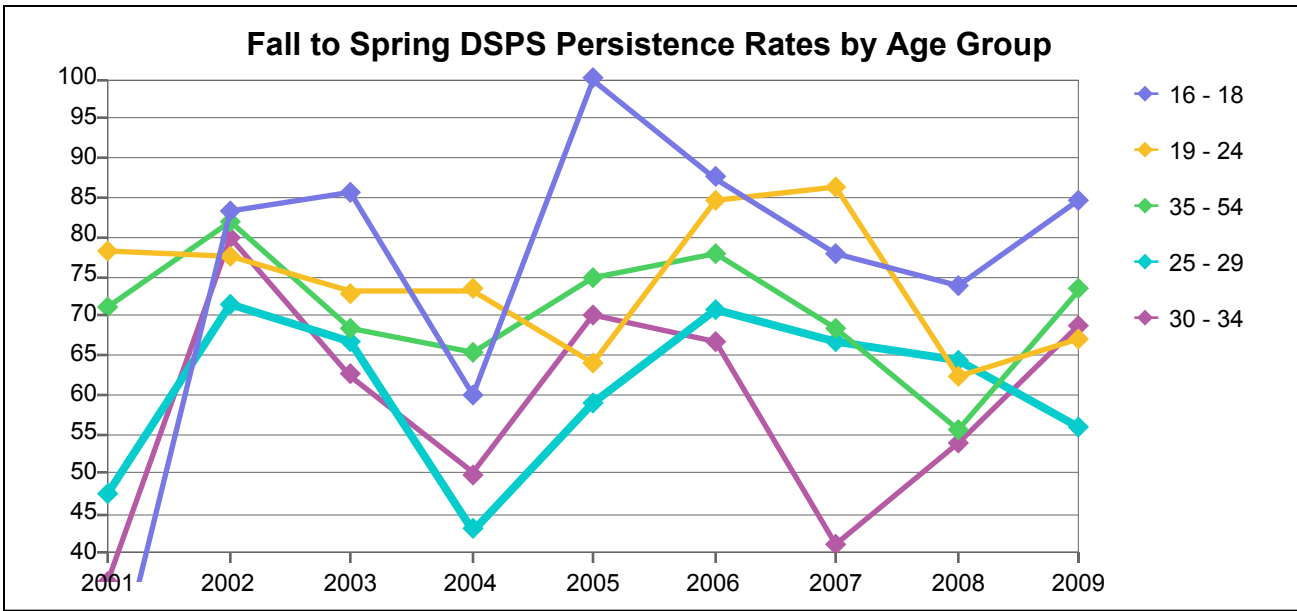
Number of Fall DSPS Students Persisting to Spring Opening Day by Age Group

Age Group	2001	2002	2003	2004	2005	2006	2007	2008	2009
16 - 18	16	27	26	21	18	21	24	22	31
19 - 24	85	83	105	110	96	97	85	72	87
25 - 29	16	14	13	12	17	18	27	25	30
30 - 34	12	11	14	14	6	11	10	9	17
35 - 54	59	65	59	56	68	60	62	40	48
55 - 64	10	12	8	4	8	14	11	16	13
65 and Over		4	2	2				2	1
Total	198	216	227	219	213	221	219	186	227

Fall to Spring DSPS Persistence Rates by Age Group

Age Group	2001	2002	2003	2004	2005	2006	2007	2008	2009
16 - 18	64	93	93	72	64	70	73	73	82
19 - 24	77	70	83	73	71	76	72	71	66
25 - 29	57	70	65	63	57	55	68	58	65
30 - 34	55	41	52	52	38	73	63	64	68
35 - 54	61	60	59	49	56	54	58	49	58
55 - 64	67	46	38	24	38	54	44	67	48
65 and Over	0	100	50	40	0	0	0	67	50
Total	66	65	70	61	60	64	64	62	64

Berkeley City College



DSPS Headcount at Fall Census by Age Group

Age Group	2001	2002	2003	2004	2005	2006	2007	2008	2009
16 - 18	5	6	7	10	4	8	18	19	13
19 - 24	23	31	37	30	36	39	58	61	73
25 - 29	19	14	6	14	17	24	21	28	25
30 - 34	11	10	16	16	10	9	17	13	16
35 - 54	59	55	73	72	87	72	89	72	60
55 - 64	4	12	10	15	17	20	22	17	12
65 and Over	7	10	8	3	1	4	4	3	2
Total	128	138	157	160	172	176	229	213	201

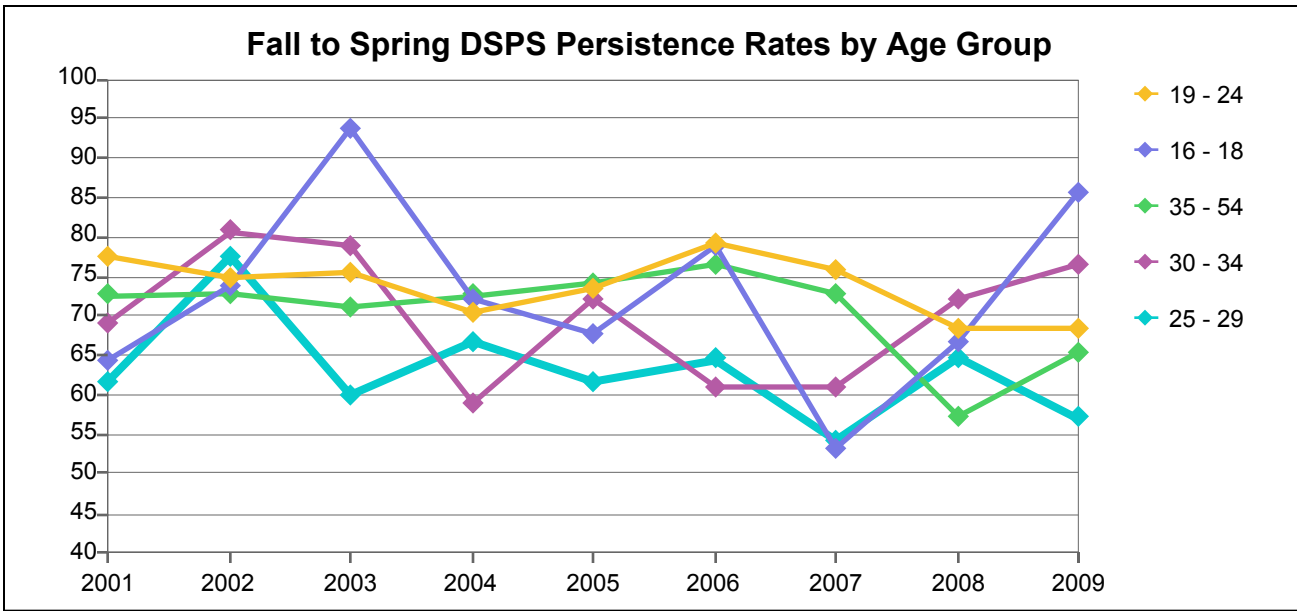
Number of Fall DSPS Students Persisting to Spring Opening Day by Age Group

Age Group	2001	2002	2003	2004	2005	2006	2007	2008	2009
16 - 18	1	5	6	6	4	7	14	14	11
19 - 24	18	24	27	22	23	33	50	38	49
25 - 29	9	10	4	6	10	17	14	18	14
30 - 34	4	8	10	8	7	6	7	7	11
35 - 54	42	45	50	47	65	56	61	40	44
55 - 64	3	9	8	13	14	15	12	12	8
65 and Over	5	9	6	1	1	4	2	1	1
Total	82	110	111	103	124	138	160	130	138

Fall to Spring DSPS Persistence Rates by Age Group

Age Group	2001	2002	2003	2004	2005	2006	2007	2008	2009
16 - 18	20	83	86	60	100	88	78	74	85
19 - 24	78	77	73	73	64	85	86	62	67
25 - 29	47	71	67	43	59	71	67	64	56
30 - 34	36	80	63	50	70	67	41	54	69
35 - 54	71	82	68	65	75	78	69	56	73
55 - 64	75	75	80	87	82	75	55	71	67
65 and Over	71	90	75	33	100	100	50	33	50
Total	64	80	71	64	72	78	70	61	69

Laney College



DSPS Headcount at Fall Census by Age Group

Age Group	2001	2002	2003	2004	2005	2006	2007	2008	2009
16 - 18	14	19	16	18	28	19	15	33	21
19 - 24	58	60	41	64	64	67	95	82	98
25 - 29	26	40	30	21	26	31	35	34	35
30 - 34	26	26	19	22	18	23	23	18	17
35 - 54	106	133	90	84	93	102	121	103	98
55 - 64	10	14	13	9	17	22	26	37	24
65 and Over	6	3	6	4	1	1	4	2	3
Total	246	295	215	222	247	265	319	309	296

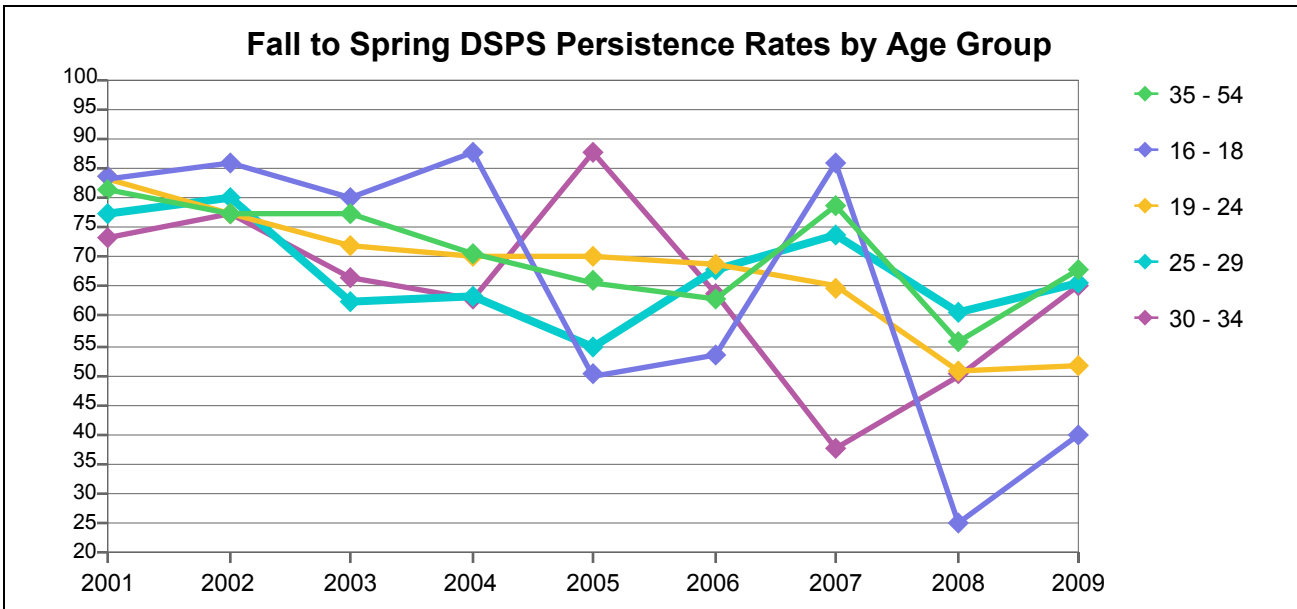
Number of Fall DSPS Students Persisting to Spring Opening Day by Age Group

Age Group	2001	2002	2003	2004	2005	2006	2007	2008	2009
16 - 18	9	14	15	13	19	15	8	22	18
19 - 24	45	45	31	45	47	53	72	56	67
25 - 29	16	31	18	14	16	20	19	22	20
30 - 34	18	21	15	13	13	14	14	13	13
35 - 54	77	97	64	61	69	78	88	59	64
55 - 64	8	8	8	6	14	14	18	22	18
65 and Over	5	3	3	2	1	1	3		2
Total	178	219	154	154	179	195	222	194	202

Fall to Spring DSPS Persistence Rates by Age Group

Age Group	2001	2002	2003	2004	2005	2006	2007	2008	2009
16 - 18	64	74	94	72	68	79	53	67	86
19 - 24	78	75	76	70	73	79	76	68	68
25 - 29	62	78	60	67	62	65	54	65	57
30 - 34	69	81	79	59	72	61	61	72	76
35 - 54	73	73	71	73	74	76	73	57	65
55 - 64	80	57	62	67	82	64	69	59	75
65 and Over	83	100	50	50	100	100	75	0	67
Total	72	74	72	69	72	74	70	63	68

Merritt College



DSPS Headcount at Fall Census by Age Group

Age Group	2001	2002	2003	2004	2005	2006	2007	2008	2009
16 - 18	12	14	10	8	6	15	7	8	5
19 - 24	42	53	71	47	10	48	37	61	29
25 - 29	22	35	37	30	11	28	19	43	29
30 - 34	15	22	30	27	8	22	16	34	20
35 - 54	80	101	145	139	41	129	84	135	84
55 - 64	12	16	21	25	5	27	21	37	21
65 and Over	4	7	7	4		1		6	3
Total	187	248	321	280	81	270	184	324	191

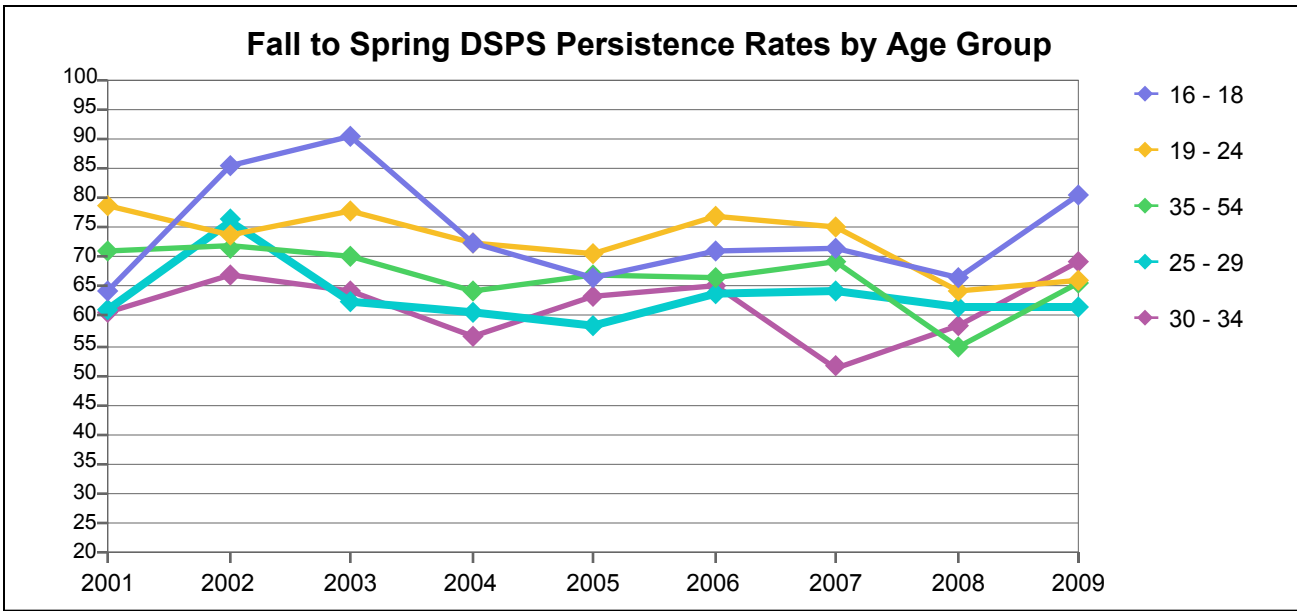
Number of Fall DSPS Students Persisting to Spring Opening Day by Age Group

Age Group	2001	2002	2003	2004	2005	2006	2007	2008	2009
16 - 18	10	12	8	7	3	8	6	2	2
19 - 24	35	41	51	33	7	33	24	31	15
25 - 29	17	28	23	19	6	19	14	26	19
30 - 34	11	17	20	17	7	14	6	17	13
35 - 54	65	78	112	98	27	81	66	75	57
55 - 64	10	14	16	15	4	20	14	26	18
65 and Over	3	4	5			1		5	1
Total	151	194	235	189	54	176	130	182	125

Fall to Spring DSPS Persistence Rates by Age Group

Age Group	2001	2002	2003	2004	2005	2006	2007	2008	2009
16 - 18	83	86	80	88	50	53	86	25	40
19 - 24	83	77	72	70	70	69	65	51	52
25 - 29	77	80	62	63	55	68	74	60	66
30 - 34	73	77	67	63	88	64	38	50	65
35 - 54	81	77	77	71	66	63	79	56	68
55 - 64	83	88	76	60	80	74	67	70	86
65 and Over	75	57	71	0		100		83	33
Total	81	78	73	68	67	65	71	56	65

Peralta Community College District



DSPS Headcount at Fall Census by Age Group

Age Group	2001	2002	2003	2004	2005	2006	2007	2008	2009
16 - 18	56	68	61	65	66	72	73	90	77
19 - 24	233	262	275	291	246	281	308	306	331
25 - 29	95	109	93	84	84	116	115	148	135
30 - 34	74	85	92	92	52	69	72	79	78
35 - 54	342	398	408	409	342	415	401	392	325
55 - 64	41	68	65	66	60	95	94	115	84
65 and Over	19	24	25	16	3	7	9	14	10
Total	860	1,014	1,019	1,023	853	1,055	1,072	1,144	1,040

Number of Fall DSPS Students Persisting to Spring Opening Day by Age Group

Age Group	2001	2002	2003	2004	2005	2006	2007	2008	2009
16 - 18	36	58	55	47	44	51	52	60	62
19 - 24	183	193	214	210	173	216	231	197	218
25 - 29	58	83	58	51	49	74	74	91	83
30 - 34	45	57	59	52	33	45	37	46	54
35 - 54	243	285	285	262	229	275	277	214	213
55 - 64	31	43	40	38	40	63	55	76	57
65 and Over	13	20	16	5	2	6	5	8	5
Total	609	739	727	665	570	730	731	692	692

Fall to Spring DSPS Persistence Rates by Age Group

Age Group	2001	2002	2003	2004	2005	2006	2007	2008	2009
16 - 18	64	85	90	72	67	71	71	67	81
19 - 24	79	74	78	72	70	77	75	64	66
25 - 29	61	76	62	61	58	64	64	61	61
30 - 34	61	67	64	57	63	65	51	58	69
35 - 54	71	72	70	64	67	66	69	55	66
55 - 64	76	63	62	58	67	66	59	66	68
65 and Over	68	83	64	31	67	86	56	57	50
Total	71	73	71	65	67	69	68	60	67