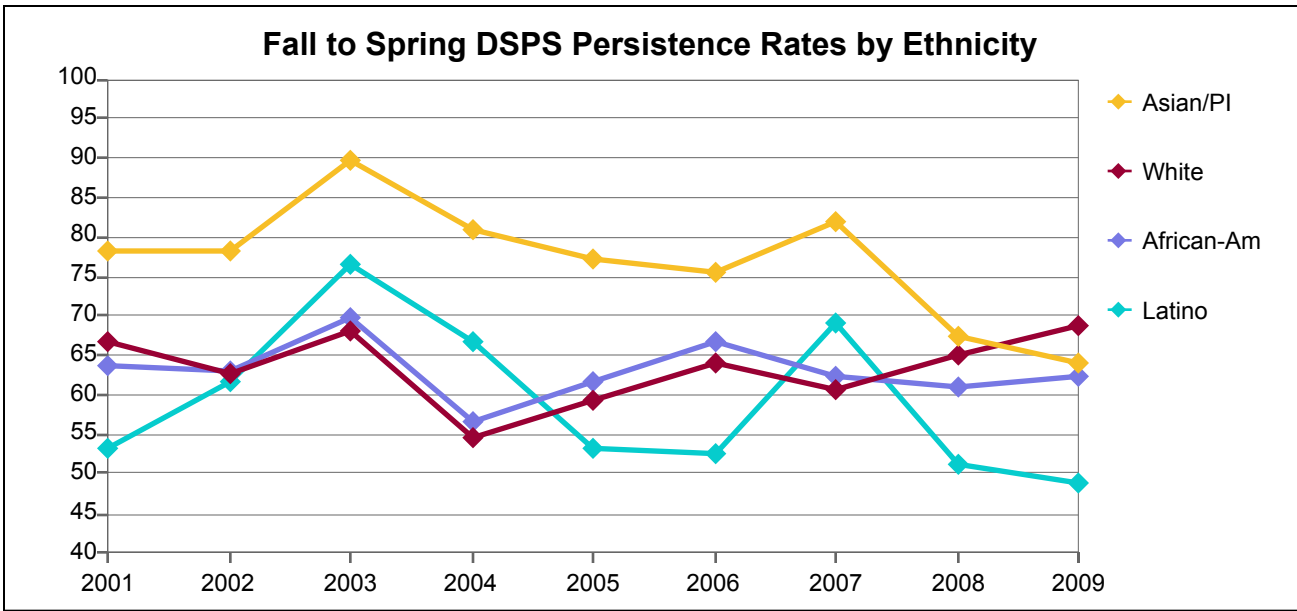


**College of Alameda**



**DSPS Headcount at Fall Census by Ethnicity**

Ethnicity	2001	2002	2003	2004	2005	2006	2007	2008	2009
White	69	83	69	79	81	86	84	60	61
African-Am	127	135	123	159	144	147	130	105	106
Asian/PI	32	41	39	47	48	45	39	49	39
Filipino	12	6	9	6	7	3	2	4	5
Latino	30	39	47	48	47	40	52	45	41
Native Am	6	3	8	3	5	3	4	11	4
Other/Unkwn	24	28	34	23	23	22	30	25	100
Total	300	335	329	365	355	346	341	299	356

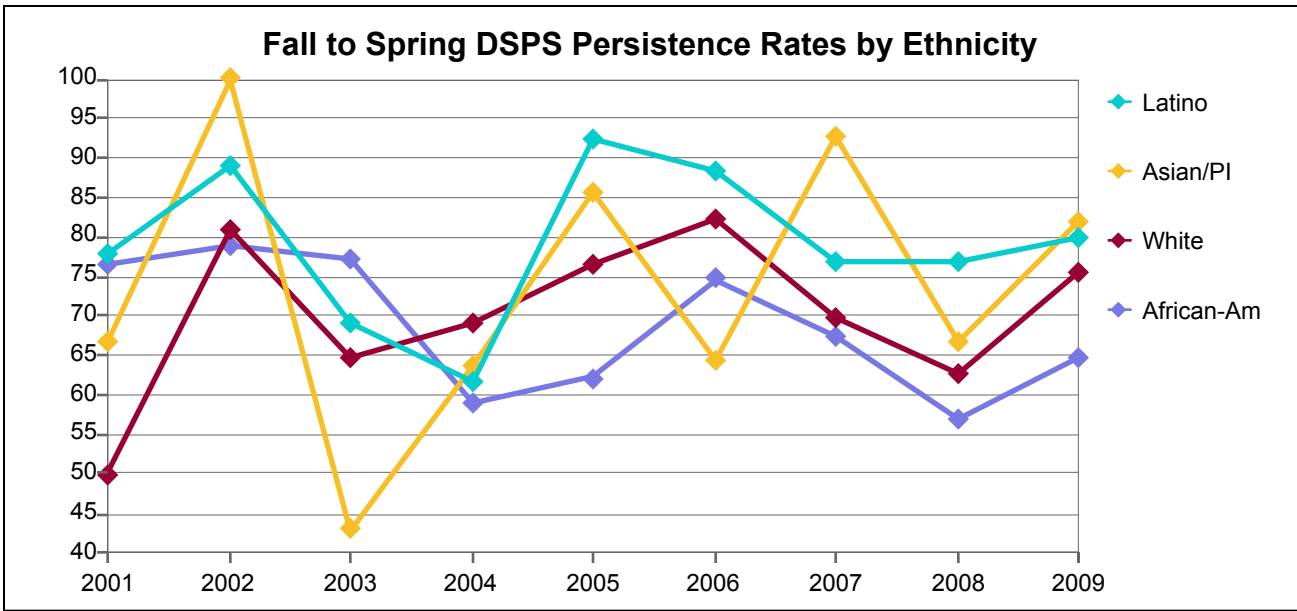
**Number of Fall DSPS Students Persisting to Spring Opening Day by Ethnicity**

Ethnicity	2001	2002	2003	2004	2005	2006	2007	2008	2009
White	46	52	47	43	48	55	51	39	42
African-Am	81	85	86	90	89	98	81	64	66
Asian/PI	25	32	35	38	37	34	32	33	25
Filipino	7	3	5	4	4	2	2	3	5
Latino	16	24	36	32	25	21	36	23	20
Native Am	3	3	3	3	2	1	3	11	1
Other/Unkwn	21	18	18	12	9	11	15	13	68
Total	199	217	230	222	214	222	220	186	227

**Fall to Spring DSPS Persistence Rates by Ethnicity**

Ethnicity	2001	2002	2003	2004	2005	2006	2007	2008	2009
White	67	63	68	54	59	64	61	65	69
African-Am	64	63	70	57	62	67	62	61	62
Asian/PI	78	78	90	81	77	76	82	67	64
Filipino	58	50	56	67	57	67	100	75	100
Latino	53	62	77	67	53	53	69	51	49
Native Am	50	100	38	100	40	33	75	100	25
Other/Unkwn	88	64	53	52	39	50	50	52	68
Total	66	65	70	61	60	64	65	62	64

## Berkeley City College



**DSPS Headcount at Fall Census by Ethnicity**

Ethnicity	2001	2002	2003	2004	2005	2006	2007	2008	2009
White	44	47	54	52	51	45	73	75	49
African-Am	47	57	66	68	74	71	83	72	68
Asian/PI	9	9	7	11	7	14	14	15	11
Filipino		1		2	2	2	1		1
Latino	9	9	13	13	13	17	26	13	20
Native Am	3	2	2	1	4	4	4	10	4
Other/Unkwn	16	14	15	13	21	23	29	28	48
<b>Total</b>	<b>128</b>	<b>139</b>	<b>157</b>	<b>160</b>	<b>172</b>	<b>176</b>	<b>230</b>	<b>213</b>	<b>201</b>

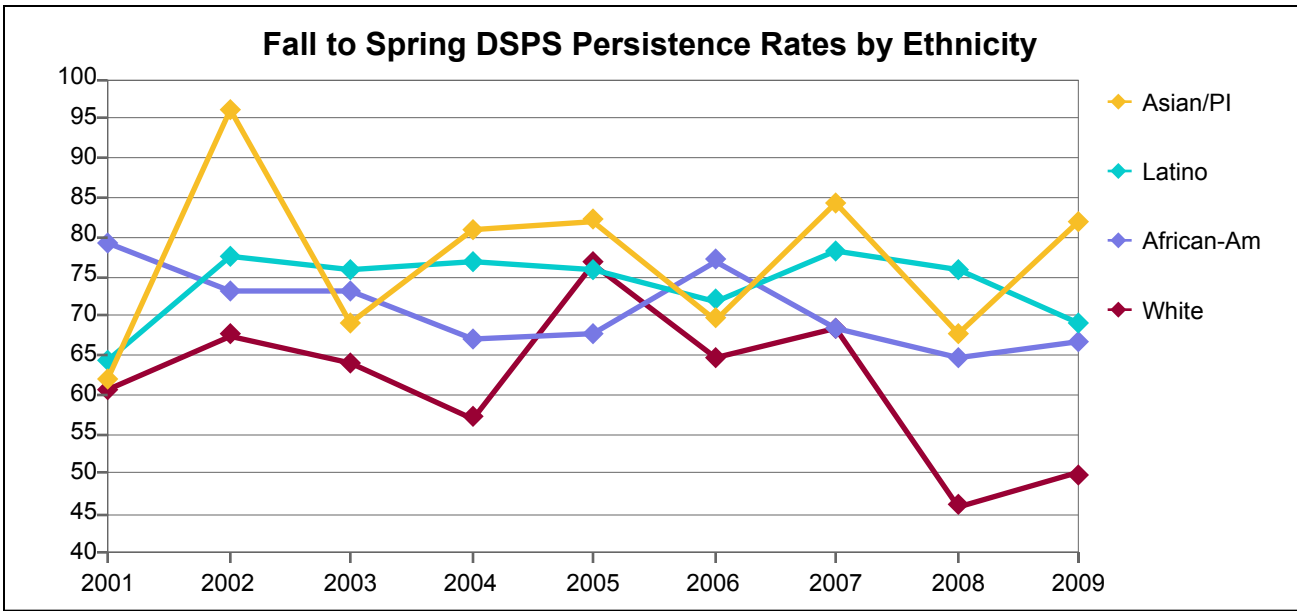
**Number of Fall DSPS Students Persisting to Spring Opening Day by Ethnicity**

Ethnicity	2001	2002	2003	2004	2005	2006	2007	2008	2009
White	22	38	35	36	39	37	51	47	37
African-Am	36	45	51	40	46	53	56	41	44
Asian/PI	6	9	3	7	6	9	13	10	9
Filipino		1		2	2	1			1
Latino	7	8	9	8	12	15	20	10	16
Native Am	1	2	1	1	2	4	2	6	2
Other/Unkwn	10	7	12	9	17	19	19	16	29
<b>Total</b>	<b>82</b>	<b>110</b>	<b>111</b>	<b>103</b>	<b>124</b>	<b>138</b>	<b>161</b>	<b>130</b>	<b>138</b>

**Fall to Spring DSPS Persistence Rates by Ethnicity**

Ethnicity	2001	2002	2003	2004	2005	2006	2007	2008	2009
White	50	81	65	69	76	82	70	63	76
African-Am	77	79	77	59	62	75	67	57	65
Asian/PI	67	100	43	64	86	64	93	67	82
Filipino		100		100	100	50	0		100
Latino	78	89	69	62	92	88	77	77	80
Native Am	33	100	50	100	50	100	50	60	50
Other/Unkwn	63	50	80	69	81	83	66	57	60
<b>Total</b>	<b>64</b>	<b>79</b>	<b>71</b>	<b>64</b>	<b>72</b>	<b>78</b>	<b>70</b>	<b>61</b>	<b>69</b>

## Laney College



**DSPS Headcount at Fall Census by Ethnicity**

Ethnicity	2001	2002	2003	2004	2005	2006	2007	2008	2009
White	28	37	25	28	30	34	35	37	10
African-Am	126	156	112	128	136	161	183	161	120
Asian/PI	29	26	29	21	28	23	32	34	22
Filipino	4	5	1	3	4	6	6	4	3
Latino	28	40	29	26	33	25	32	29	26
Native Am	5	9	2		1	3	4	7	4
Other/Unkwn	26	22	17	17	15	14	27	37	111
<b>Total</b>	<b>246</b>	<b>295</b>	<b>215</b>	<b>223</b>	<b>247</b>	<b>266</b>	<b>319</b>	<b>309</b>	<b>296</b>

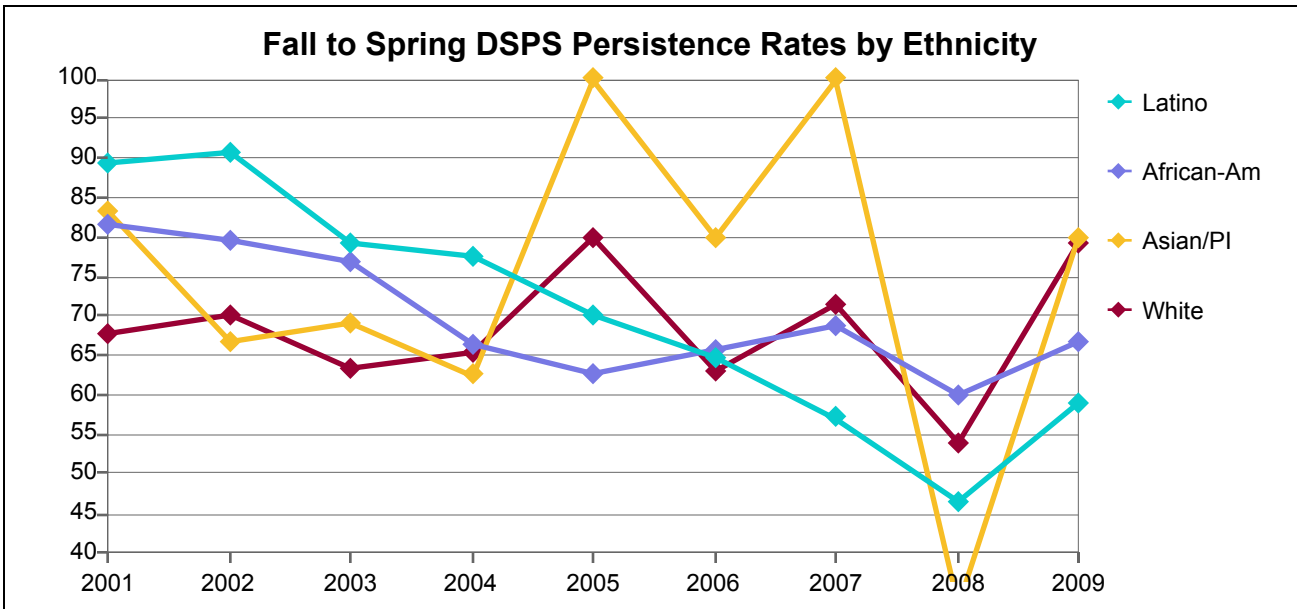
**Number of Fall DSPS Students Persisting to Spring Opening Day by Ethnicity**

Ethnicity	2001	2002	2003	2004	2005	2006	2007	2008	2009
White	17	25	16	16	23	22	24	17	5
African-Am	100	114	82	86	92	124	125	104	80
Asian/PI	18	25	20	17	23	16	27	23	18
Filipino	3	4	1	3	4	5	2		2
Latino	18	31	22	20	25	18	25	22	18
Native Am	4	7	1		1	1	2	4	2
Other/Unkwn	18	13	12	12	11	10	17	24	77
<b>Total</b>	<b>178</b>	<b>219</b>	<b>154</b>	<b>154</b>	<b>179</b>	<b>196</b>	<b>222</b>	<b>194</b>	<b>202</b>

**Fall to Spring DSPS Persistence Rates by Ethnicity**

Ethnicity	2001	2002	2003	2004	2005	2006	2007	2008	2009
White	61	68	64	57	77	65	69	46	50
African-Am	79	73	73	67	68	77	68	65	67
Asian/PI	62	96	69	81	82	70	84	68	82
Filipino	75	80	100	100	100	83	33	0	67
Latino	64	78	76	77	76	72	78	76	69
Native Am	80	78	50		100	33	50	57	50
Other/Unkwn	69	59	71	71	73	71	63	65	69
<b>Total</b>	<b>72</b>	<b>74</b>	<b>72</b>	<b>69</b>	<b>72</b>	<b>74</b>	<b>70</b>	<b>63</b>	<b>68</b>

## Merritt College



**DSPS Headcount at Fall Census by Ethnicity**

Ethnicity	2001	2002	2003	2004	2005	2006	2007	2008	2009
White	34	50	52	49	10	46	28	50	24
African-Am	108	137	198	167	51	152	115	177	99
Asian/PI	6	9	13	8	2	5	6	9	5
Filipino	1	4	5	4	1	3	1	5	5
Latino	28	32	29	31	10	37	21	43	17
Native Am	4	5	6	6		4	1	12	2
Other/Unkwn	7	11	18	15	7	23	12	28	39
<b>Total</b>	<b>188</b>	<b>248</b>	<b>321</b>	<b>280</b>	<b>81</b>	<b>270</b>	<b>184</b>	<b>324</b>	<b>191</b>

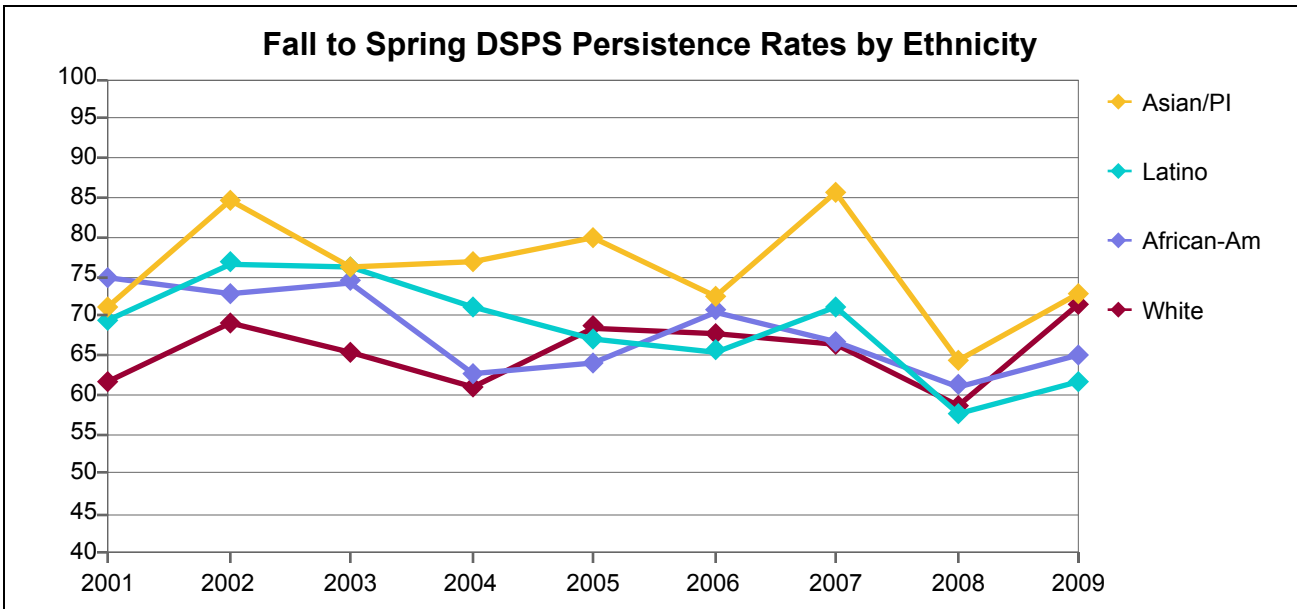
**Number of Fall DSPS Students Persisting to Spring Opening Day by Ethnicity**

Ethnicity	2001	2002	2003	2004	2005	2006	2007	2008	2009
White	23	35	33	32	8	29	20	27	19
African-Am	88	109	152	111	32	100	79	106	66
Asian/PI	5	6	9	5	2	4	6	3	4
Filipino	1	3	4	3	1	2	1	4	3
Latino	25	29	23	24	7	24	12	20	10
Native Am	2	3	4	3		2	1	3	
Other/Unkwn	7	9	10	11	4	15	11	19	23
<b>Total</b>	<b>151</b>	<b>194</b>	<b>235</b>	<b>189</b>	<b>54</b>	<b>176</b>	<b>130</b>	<b>182</b>	<b>125</b>

**Fall to Spring DSPS Persistence Rates by Ethnicity**

Ethnicity	2001	2002	2003	2004	2005	2006	2007	2008	2009
White	68	70	63	65	80	63	71	54	79
African-Am	81	80	77	66	63	66	69	60	67
Asian/PI	83	67	69	63	100	80	100	33	80
Filipino	100	75	80	75	100	67	100	80	60
Latino	89	91	79	77	70	65	57	47	59
Native Am	50	60	67	50		50	100	25	0
Other/Unkwn	100	82	56	73	57	65	92	68	59
<b>Total</b>	<b>80</b>	<b>78</b>	<b>73</b>	<b>68</b>	<b>67</b>	<b>65</b>	<b>71</b>	<b>56</b>	<b>65</b>

**Peralta Community College District**



**DSPS Headcount at Fall Census by Ethnicity**

Ethnicity	2001	2002	2003	2004	2005	2006	2007	2008	2009
White	175	217	200	208	172	211	220	222	144
African-Am	408	485	499	522	405	531	511	515	393
Asian/PI	76	85	88	87	85	87	91	107	77
Filipino	17	16	15	15	14	14	10	13	14
Latino	95	120	118	118	103	119	131	130	104
Native Am	18	19	18	10	10	14	13	40	14
Other/Unkwn	73	75	84	68	66	82	98	118	298
<b>Total</b>	<b>862</b>	<b>1,017</b>	<b>1,022</b>	<b>1,028</b>	<b>855</b>	<b>1,058</b>	<b>1,074</b>	<b>1,145</b>	<b>1,044</b>

**Number of Fall DSPS Students Persisting to Spring Opening Day by Ethnicity**

Ethnicity	2001	2002	2003	2004	2005	2006	2007	2008	2009
White	108	150	131	127	118	143	146	130	103
African-Am	305	353	371	327	259	375	341	315	256
Asian/PI	54	72	67	67	68	63	78	69	56
Filipino	11	11	10	12	11	10	5	7	11
Latino	66	92	90	84	69	78	93	75	64
Native Am	10	15	9	7	5	8	8	24	5
Other/Unkwn	56	47	52	44	41	55	62	72	197
<b>Total</b>	<b>610</b>	<b>740</b>	<b>730</b>	<b>668</b>	<b>571</b>	<b>732</b>	<b>733</b>	<b>692</b>	<b>692</b>

**Fall to Spring DSPS Persistence Rates by Ethnicity**

Ethnicity	2001	2002	2003	2004	2005	2006	2007	2008	2009
White	62	69	66	61	69	68	66	59	72
African-Am	75	73	74	63	64	71	67	61	65
Asian/PI	71	85	76	77	80	72	86	64	73
Filipino	65	69	67	80	79	71	50	54	79
Latino	69	77	76	71	67	66	71	58	62
Native Am	56	79	50	70	50	57	62	60	36
Other/Unkwn	77	63	62	65	62	67	63	61	66
<b>Total</b>	<b>71</b>	<b>73</b>	<b>71</b>	<b>65</b>	<b>67</b>	<b>69</b>	<b>68</b>	<b>60</b>	<b>66</b>