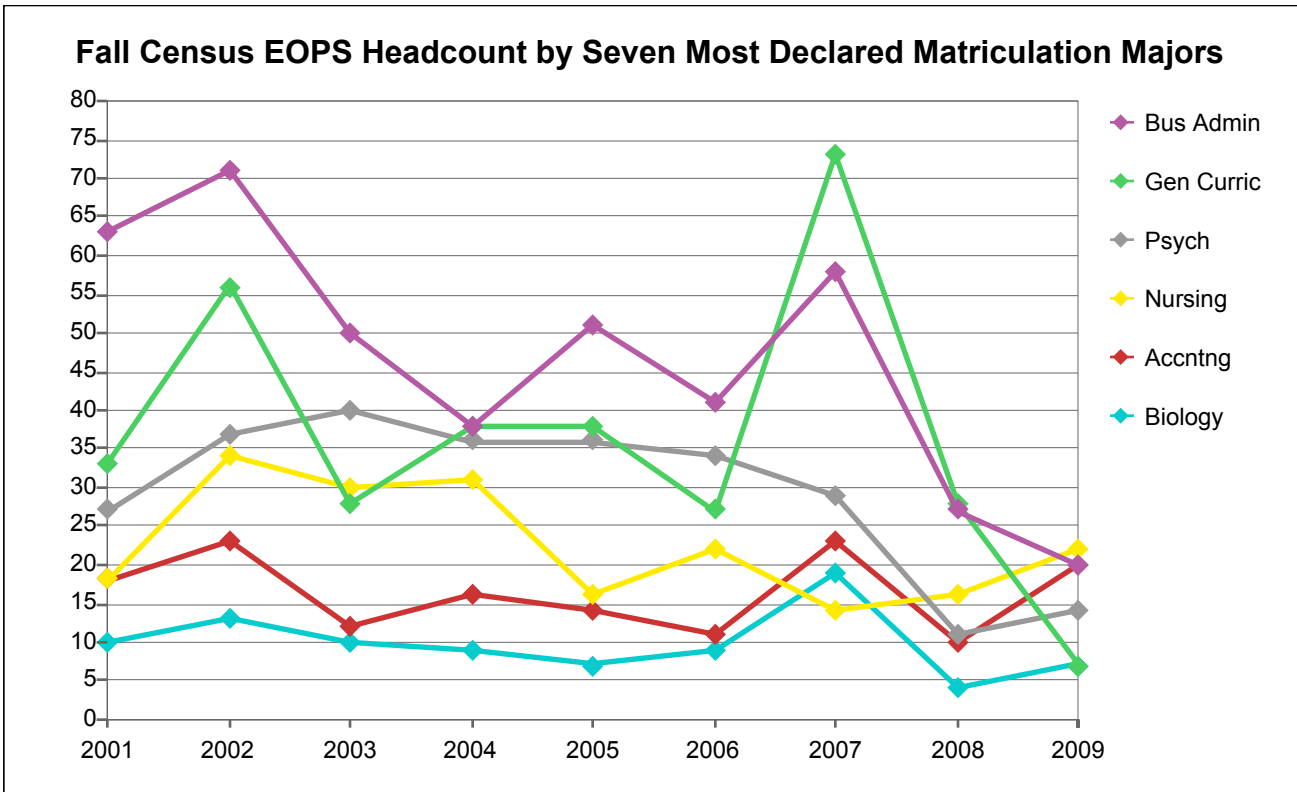


**College of Alameda**



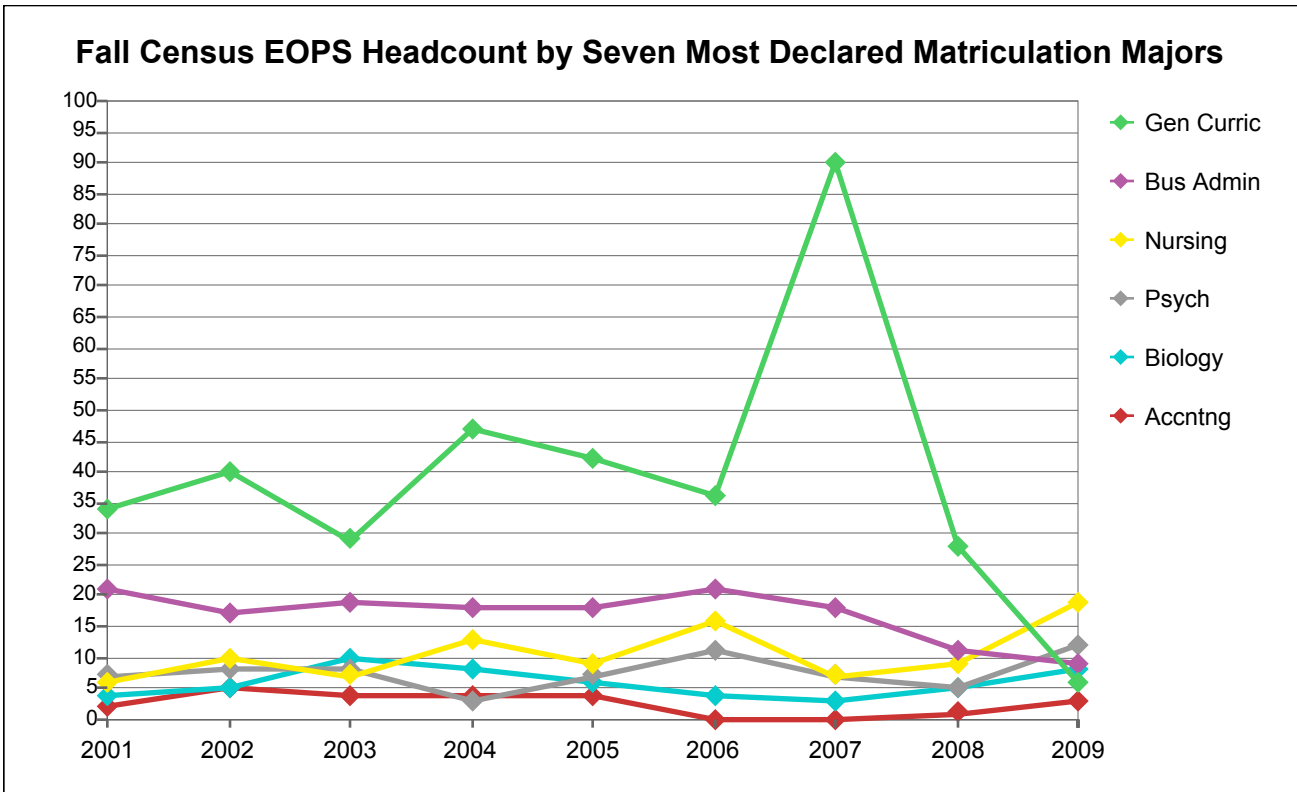
**Fall Census EOPS Headcount by Seven Most Declared Matriculation Majors**

Matric Major	2001	2002	2003	2004	2005	2006	2007	2008	2009
Gen Curric	33	56	28	38	38	27	73	28	7
Bus Admin	63	71	50	38	51	41	58	27	20
Nursing	18	34	30	31	16	22	14	16	22
Acctntg	18	23	12	16	14	11	23	10	20
Biology	10	13	10	9	7	9	19	4	7
Psych	27	37	40	36	36	34	29	11	14
Other	316	353	240	277	269	270	285	331	231
Undecided	48	53	80	46	46	50	53	55	111
<b>Total</b>	<b>533</b>	<b>640</b>	<b>490</b>	<b>491</b>	<b>477</b>	<b>464</b>	<b>554</b>	<b>482</b>	<b>432</b>

**Percentage Distribution of Fall Census EOPS Headcount by Seven Most Declared Matriculation Majors**

Matric Major	2001	2002	2003	2004	2005	2006	2007	2008	2009
Gen Curric	6%	9%	6%	8%	8%	6%	13%	6%	2%
Bus Admin	12%	11%	10%	8%	11%	9%	10%	6%	5%
Nursing	3%	5%	6%	6%	3%	5%	3%	3%	5%
Acctntg	3%	4%	2%	3%	3%	2%	4%	2%	5%
Biology	2%	2%	2%	2%	1%	2%	3%	1%	2%
Psych	5%	6%	8%	7%	8%	7%	5%	2%	3%
Other	59%	55%	49%	56%	56%	58%	51%	69%	53%
Undecided	9%	8%	16%	9%	10%	11%	10%	11%	26%
<b>Total</b>	<b>100%</b>	<b>100%</b>	<b>100%</b>	<b>100%</b>	<b>100%</b>	<b>100%</b>	<b>100%</b>	<b>100%</b>	<b>100%</b>

**Berkeley City College**



**Fall Census EOPS Headcount by Seven Most Declared Matriculation Majors**

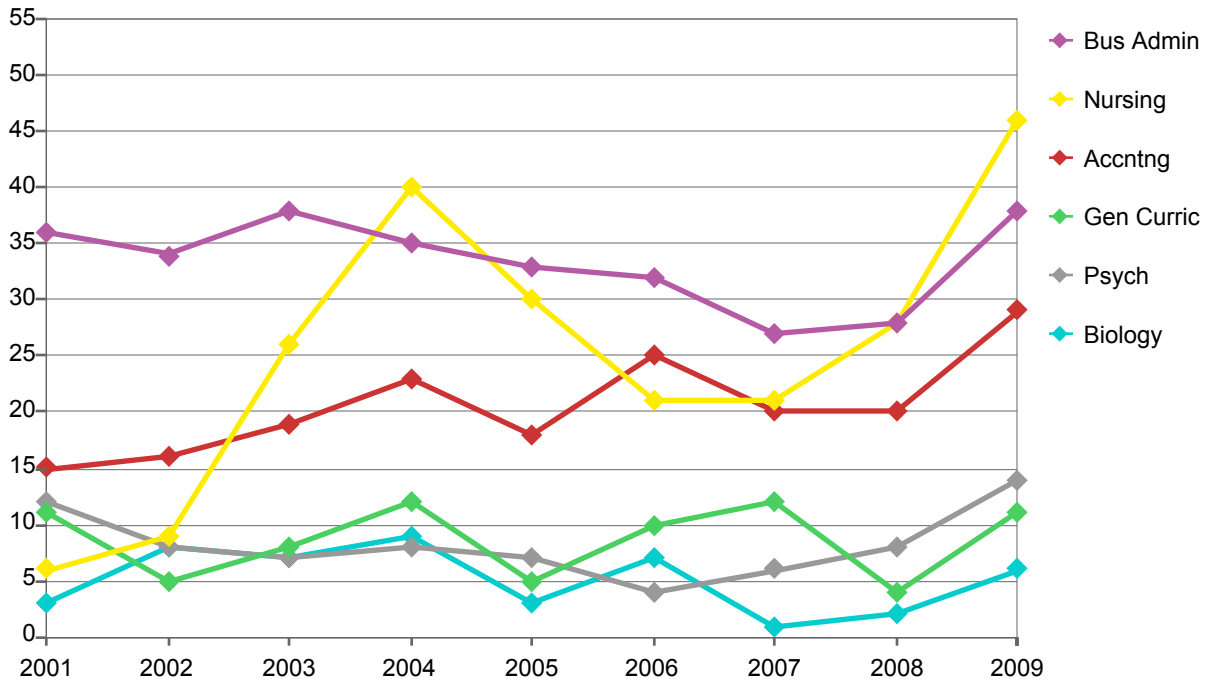
Matric Major	2001	2002	2003	2004	2005	2006	2007	2008	2009
Gen Curric	34	40	29	47	42	36	90	28	6
Bus Admin	21	17	19	18	18	21	18	11	9
Nursing	6	10	7	13	9	16	7	9	19
Acctntng	2	5	4	4	4			1	3
Biology	4	5	10	8	6	4	3	5	8
Psych	7	8	8	3	7	11	7	5	12
Other	175	177	161	163	201	155	145	237	146
Undecided	55	57	49	107	93	84	52	61	94
<b>Total</b>	<b>304</b>	<b>319</b>	<b>287</b>	<b>363</b>	<b>380</b>	<b>327</b>	<b>322</b>	<b>357</b>	<b>297</b>

**Percentage Distribution of Fall Census EOPS Headcount by Seven Most Declared Matriculation Majors**

Matric Major	2001	2002	2003	2004	2005	2006	2007	2008	2009
Gen Curric	11%	13%	10%	13%	11%	11%	28%	8%	2%
Bus Admin	7%	5%	7%	5%	5%	6%	6%	3%	3%
Nursing	2%	3%	2%	4%	2%	5%	2%	3%	6%
Acctntng	1%	2%	1%	1%	1%			0%	1%
Biology	1%	2%	3%	2%	2%	1%	1%	1%	3%
Psych	2%	3%	3%	1%	2%	3%	2%	1%	4%
Other	58%	55%	56%	45%	53%	47%	45%	66%	49%
Undecided	18%	18%	17%	29%	24%	26%	16%	17%	32%
<b>Total</b>	<b>100%</b>	<b>100%</b>	<b>100%</b>	<b>100%</b>	<b>100%</b>	<b>100%</b>	<b>100%</b>	<b>100%</b>	<b>100%</b>

## Laney College

**Fall Census EOPS Headcount by Seven Most Declared Matriculation Majors**



**Fall Census EOPS Headcount by Seven Most Declared Matriculation Majors**

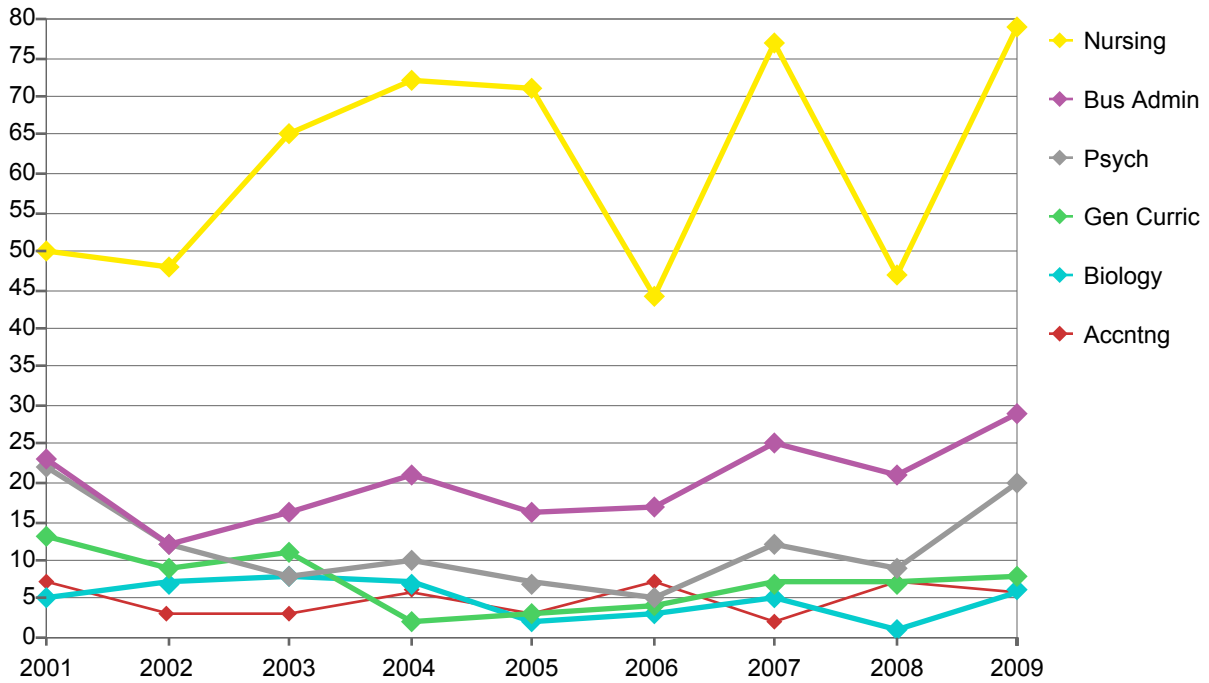
Matric Major	2001	2002	2003	2004	2005	2006	2007	2008	2009
Gen Curric	11	5	8	12	5	10	12	4	11
Bus Admin	36	34	38	35	33	32	27	28	38
Nursing	6	9	26	40	30	21	21	28	46
Acctng	15	16	19	23	18	25	20	20	29
Biology	3	8	7	9	3	7	1	2	6
Psych	12	8	7	8	7	4	6	8	14
Other	459	385	439	538	647	466	524	786	437
Undecided	347	324	352	315	118	412	205	213	282
<b>Total</b>	<b>889</b>	<b>789</b>	<b>896</b>	<b>980</b>	<b>861</b>	<b>977</b>	<b>816</b>	<b>1,089</b>	<b>863</b>

**Percentage Distribution of Fall Census EOPS Headcount by Seven Most Declared Matriculation Majors**

Matric Major	2001	2002	2003	2004	2005	2006	2007	2008	2009
Gen Curric	1%	1%	1%	1%	1%	1%	1%	0%	1%
Bus Admin	4%	4%	4%	4%	4%	3%	3%	3%	4%
Nursing	1%	1%	3%	4%	3%	2%	3%	3%	5%
Acctng	2%	2%	2%	2%	2%	3%	2%	2%	3%
Biology	0%	1%	1%	1%	0%	1%	0%	0%	1%
Psych	1%	1%	1%	1%	1%	0%	1%	1%	2%
Other	52%	49%	49%	55%	75%	48%	64%	72%	51%
Undecided	39%	41%	39%	32%	14%	42%	25%	20%	33%
<b>Total</b>	<b>100%</b>	<b>100%</b>	<b>100%</b>	<b>100%</b>	<b>100%</b>	<b>100%</b>	<b>100%</b>	<b>100%</b>	<b>100%</b>

**Merritt College**

**Fall Census EOPS Headcount by Seven Most Declared Matriculation Majors**



**Fall Census EOPS Headcount by Seven Most Declared Matriculation Majors**

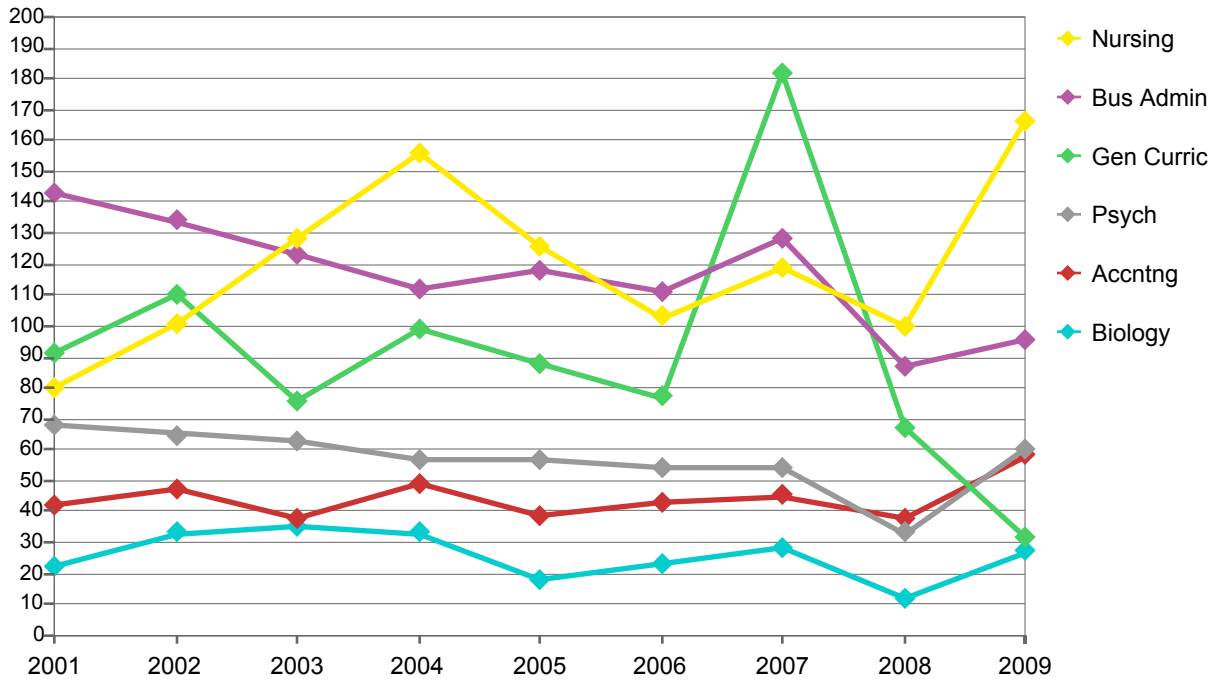
Matric Major	2001	2002	2003	2004	2005	2006	2007	2008	2009
Gen Curric	13	9	11	2	3	4	7	7	8
Bus Admin	23	12	16	21	16	17	25	21	29
Nursing	50	48	65	72	71	44	77	47	79
Acctng	7	3	3	6	3	7	2	7	6
Biology	5	7	8	7	2	3	5	1	6
Psych	22	12	8	10	7	5	12	9	20
Other	412	547	607	686	605	440	445	501	282
Undecided	64	68	86	45	70	171	48	30	60
Total	596	706	804	849	777	691	621	623	490

**Percentage Distribution of Fall Census EOPS Headcount by Seven Most Declared Matriculation Majors**

Matric Major	2001	2002	2003	2004	2005	2006	2007	2008	2009
Gen Curric	2%	1%	1%	0%	0%	1%	1%	1%	2%
Bus Admin	4%	2%	2%	2%	2%	2%	4%	3%	6%
Nursing	8%	7%	8%	8%	9%	6%	12%	8%	16%
Acctng	1%	0%	0%	1%	0%	1%	0%	1%	1%
Biology	1%	1%	1%	1%	0%	0%	1%	0%	1%
Psych	4%	2%	1%	1%	1%	1%	2%	1%	4%
Other	69%	77%	75%	81%	78%	64%	72%	80%	58%
Undecided	11%	10%	11%	5%	9%	25%	8%	5%	12%
Total	100%	100%	100%	100%	100%	100%	100%	100%	100%

**Peralta Community College District**

**Fall Census EOPS Headcount by Seven Most Declared Matriculation Majors**



**Fall Census EOPS Headcount by Seven Most Declared Matriculation Majors**

Matric Major	2001	2002	2003	2004	2005	2006	2007	2008	2009
Gen Curric	91	110	76	99	88	77	182	67	32
Bus Admin	143	134	123	112	118	111	128	87	96
Nursing	80	101	128	156	126	103	119	100	166
Acctng	42	47	38	49	39	43	45	38	58
Biology	22	33	35	33	18	23	28	12	27
Psych	68	65	63	57	57	54	54	33	60
Other	1,362	1,462	1,447	1,664	1,722	1,331	1,399	1,855	1,096
Undecided	514	502	567	513	327	717	358	359	547
Total	2,322	2,454	2,477	2,683	2,495	2,459	2,313	2,551	2,082

**Percentage Distribution of Fall Census EOPS Headcount by Seven Most Declared Matriculation Majors**

Matric Major	2001	2002	2003	2004	2005	2006	2007	2008	2009
Gen Curric	4%	4%	3%	4%	4%	3%	8%	3%	2%
Bus Admin	6%	5%	5%	4%	5%	5%	6%	3%	5%
Nursing	3%	4%	5%	6%	5%	4%	5%	4%	8%
Acctng	2%	2%	2%	2%	2%	2%	2%	1%	3%
Biology	1%	1%	1%	1%	1%	1%	1%	0%	1%
Psych	3%	3%	3%	2%	2%	2%	2%	1%	3%
Other	59%	60%	58%	62%	69%	54%	60%	73%	53%
Undecided	22%	20%	23%	19%	13%	29%	15%	14%	26%
Total	100%	100%	100%	100%	100%	100%	100%	100%	100%