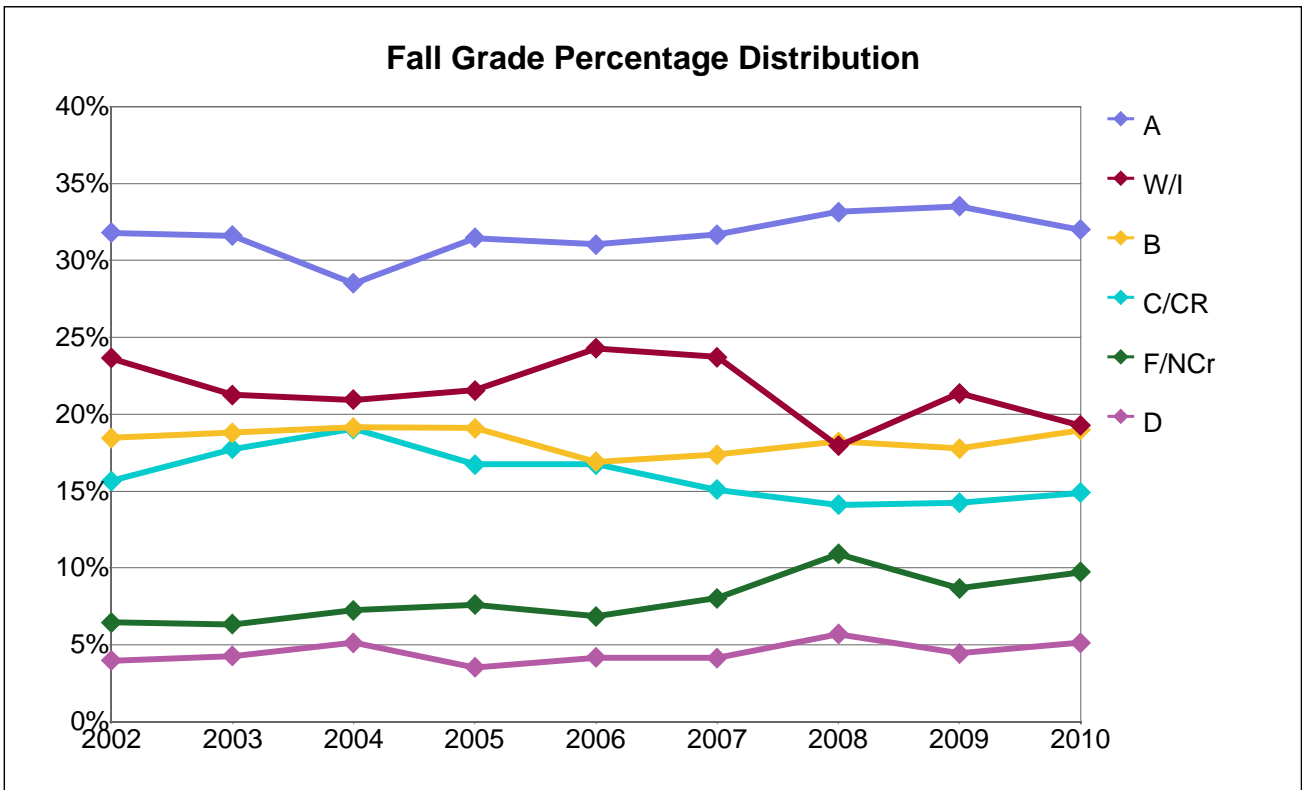


College of Alameda



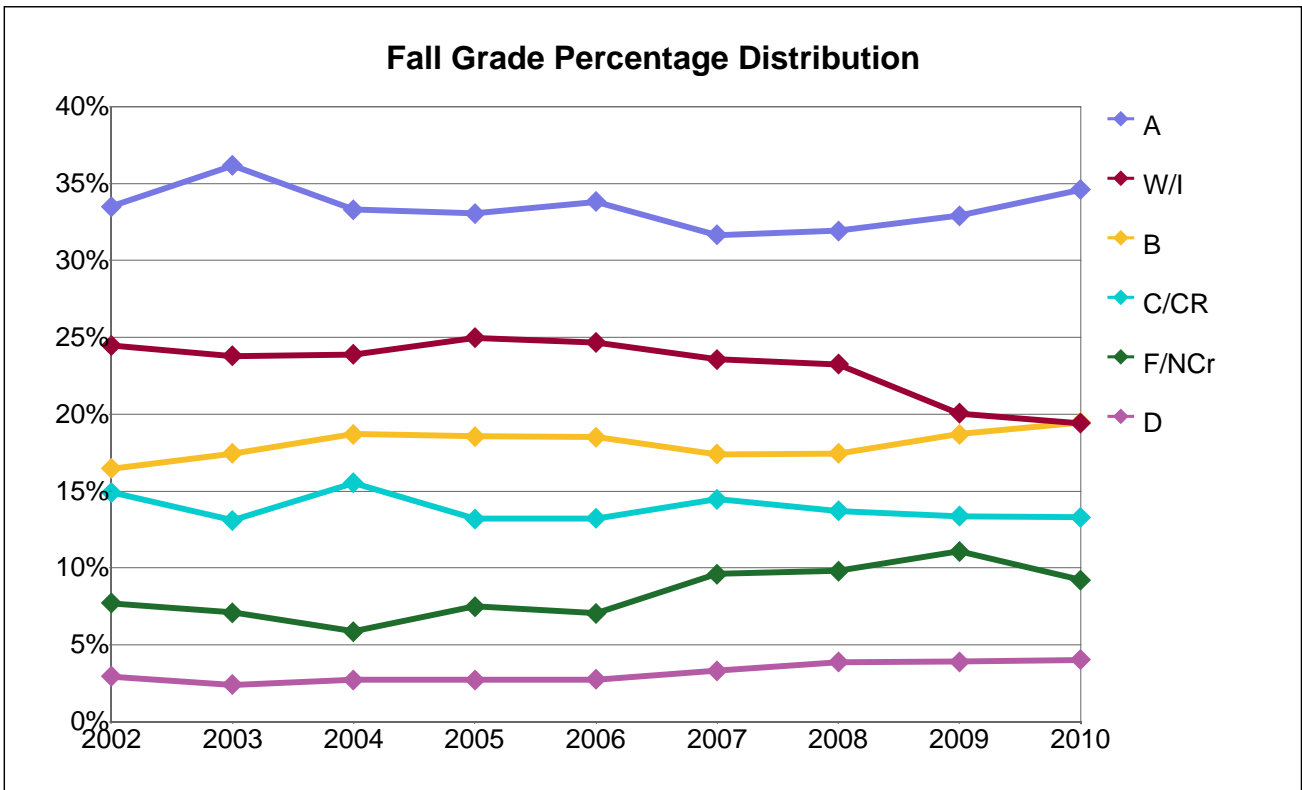
Fall Grade Frequency Distribution

Grade	2002	2003	2004	2005	2006	2007	2008	2009	2010
A	3,974	3,779	3,190	3,642	3,867	4,086	4,330	4,954	4,128
B	2,306	2,248	2,141	2,211	2,107	2,241	2,377	2,624	2,446
C	1,510	1,597	1,525	1,487	1,500	1,542	1,657	1,857	1,698
CR	446	525	606	449	586	404	184	247	222
D	496	512	573	410	520	534	745	655	662
F	424	424	522	518	581	638	1,338	1,213	1,150
I	131	113	118	102	124	202	5	231	291
NCr	383	333	290	363	273	398	87	70	105
W	2,823	2,431	2,224	2,392	2,901	2,857	2,336	2,926	2,195
Total	12,493	11,962	11,189	11,574	12,459	12,902	13,059	14,777	12,897

Fall Grade Percentage Distribution

Grade	2002	2003	2004	2005	2006	2007	2008	2009	2010
A	32%	32%	29%	31%	31%	32%	33%	34%	32%
B	18%	19%	19%	19%	17%	17%	18%	18%	19%
C	12%	13%	14%	13%	12%	12%	13%	13%	13%
CR	4%	4%	5%	4%	5%	3%	1%	2%	2%
D	4%	4%	5%	4%	4%	4%	6%	4%	5%
F	3%	4%	5%	4%	5%	5%	10%	8%	9%
I	1%	1%	1%	1%	1%	2%	0%	2%	2%
NCr	3%	3%	3%	3%	2%	3%	1%	0%	1%
W	23%	20%	20%	21%	23%	22%	18%	20%	17%
% of Column	100%	100%	100%	100%	100%	100%	100%	100%	100%

Berkeley City College



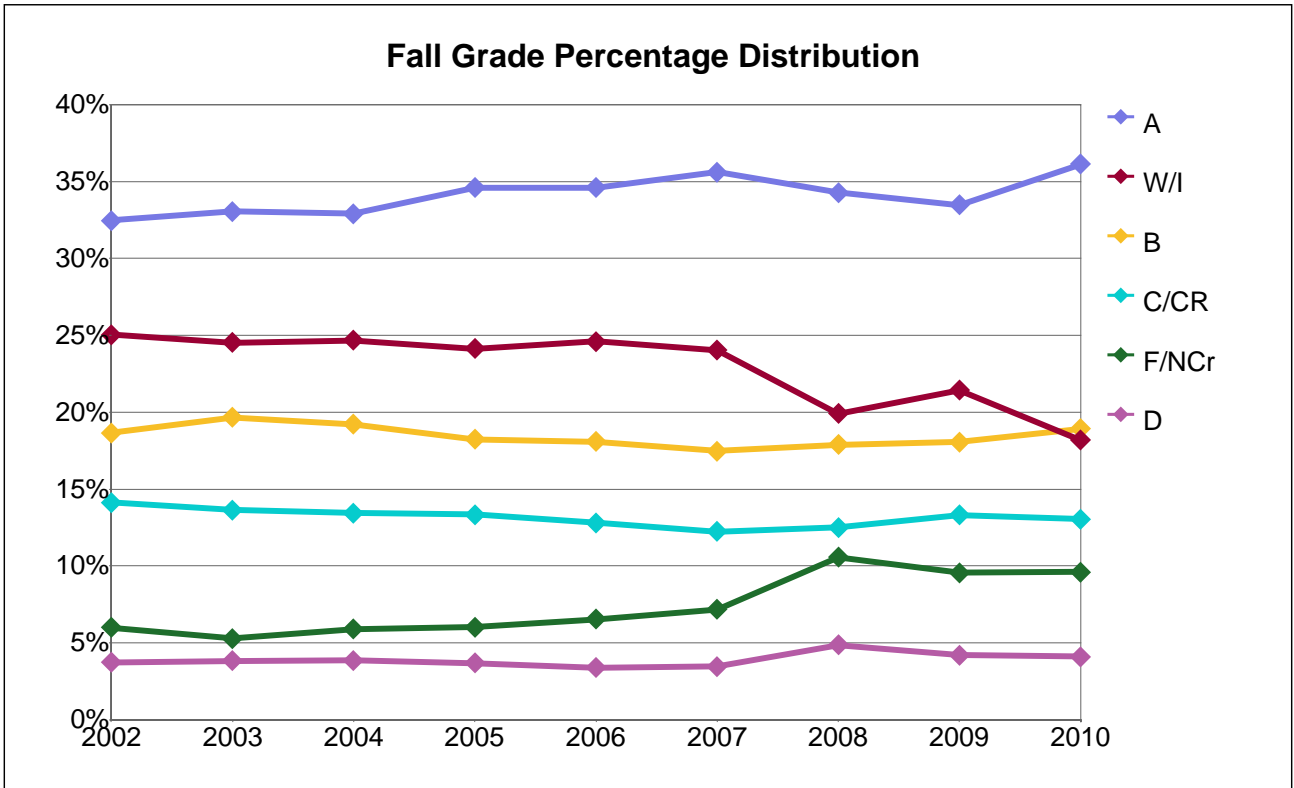
Fall Grade Frequency Distribution

Grade	2002	2003	2004	2005	2006	2007	2008	2009	2010
A	3,305	3,035	2,855	2,763	3,282	3,723	4,282	4,975	5,018
B	1,625	1,465	1,603	1,551	1,796	2,046	2,340	2,828	2,820
C	887	712	761	742	911	1,103	1,468	1,585	1,591
CR	584	387	570	360	371	598	371	435	336
D	290	201	233	227	267	389	521	590	584
F	482	323	313	395	463	814	1,200	1,570	1,289
I	130	102	75	81	97	118	1	158	155
NCr	278	273	191	232	222	317	113	107	46
W	2,283	1,894	1,972	2,006	2,296	2,654	3,115	2,873	2,659
Total	9,864	8,392	8,573	8,357	9,705	11,762	13,411	15,121	14,498

Fall Grade Percentage Distribution

Grade	2002	2003	2004	2005	2006	2007	2008	2009	2010
A	34%	36%	33%	33%	34%	32%	32%	33%	35%
B	16%	17%	19%	19%	19%	17%	17%	19%	19%
C	9%	8%	9%	9%	9%	9%	11%	10%	11%
CR	6%	5%	7%	4%	4%	5%	3%	3%	2%
D	3%	2%	3%	3%	3%	3%	4%	4%	4%
F	5%	4%	4%	5%	5%	7%	9%	10%	9%
I	1%	1%	1%	1%	1%	1%	0%	1%	1%
NCr	3%	3%	2%	3%	2%	3%	1%	1%	0%
W	23%	23%	23%	24%	24%	23%	23%	19%	18%
% of Column	100%	100%	100%	100%	100%	100%	100%	100%	100%

Laney College



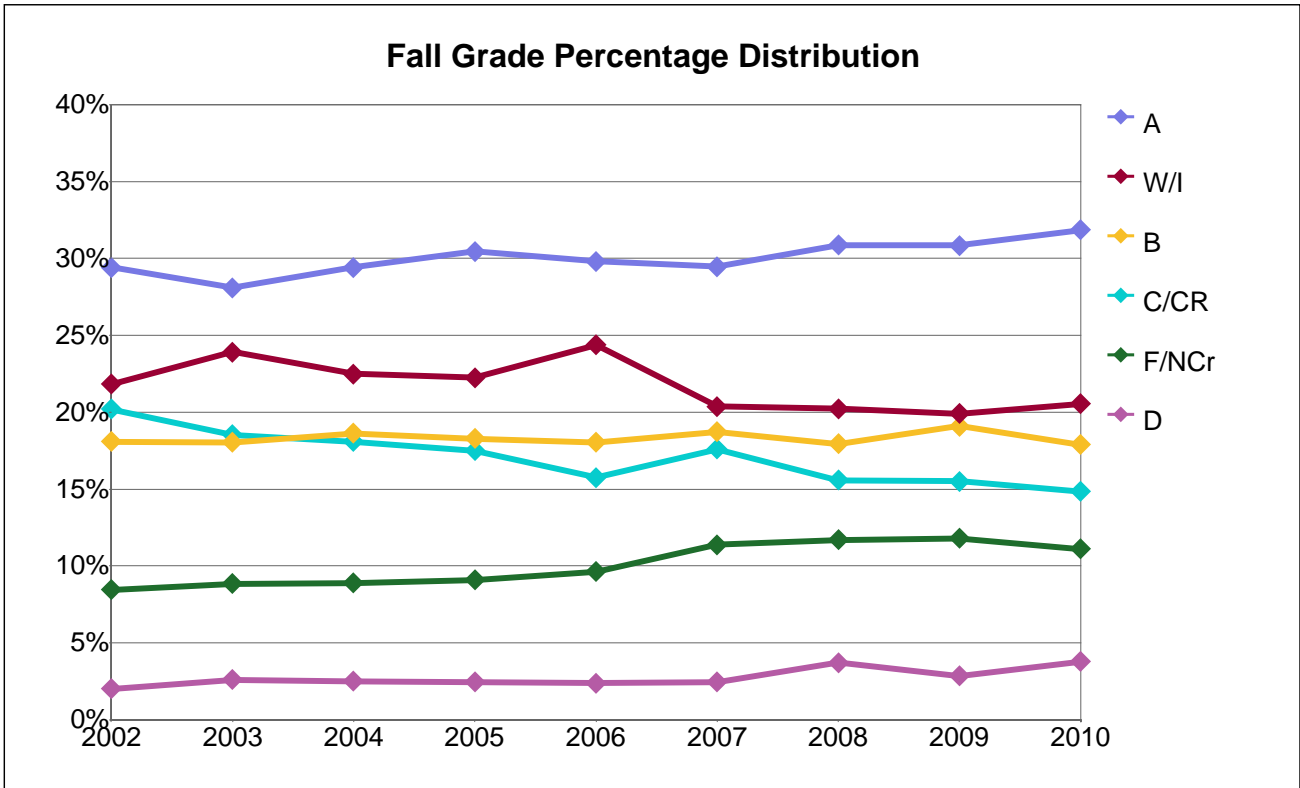
Fall Grade Frequency Distribution

Grade	2002	2003	2004	2005	2006	2007	2008	2009	2010
A	9,342	9,156	8,587	8,520	9,148	9,763	10,008	10,901	10,356
B	5,371	5,444	5,013	4,493	4,781	4,788	5,220	5,879	5,424
C	3,616	3,471	3,274	3,003	2,926	2,908	3,305	3,802	3,408
CR	450	308	233	280	459	445	349	538	330
D	1,073	1,064	1,005	906	896	951	1,416	1,364	1,174
F	1,201	1,218	1,277	1,240	1,268	1,304	2,952	2,926	2,654
I	223	265	253	228	201	266	8	474	333
NCr	523	244	261	243	458	659	132	185	102
W	6,985	6,529	6,186	5,715	6,307	6,324	5,802	6,504	4,876
Total	28,784	27,699	26,089	24,628	26,444	27,408	29,192	32,573	28,657

Fall Grade Percentage Distribution

Grade	2002	2003	2004	2005	2006	2007	2008	2009	2010
A	32%	33%	33%	35%	35%	36%	34%	33%	36%
B	19%	20%	19%	18%	18%	17%	18%	18%	19%
C	13%	13%	13%	12%	11%	11%	11%	12%	12%
CR	2%	1%	1%	1%	2%	2%	1%	2%	1%
D	4%	4%	4%	4%	3%	3%	5%	4%	4%
F	4%	4%	5%	5%	5%	5%	10%	9%	9%
I	1%	1%	1%	1%	1%	1%	0%	1%	1%
NCr	2%	1%	1%	1%	2%	2%	0%	1%	0%
W	24%	24%	24%	23%	24%	23%	20%	20%	17%
% of Column	100%	100%	100%	100%	100%	100%	100%	100%	100%

Merritt College



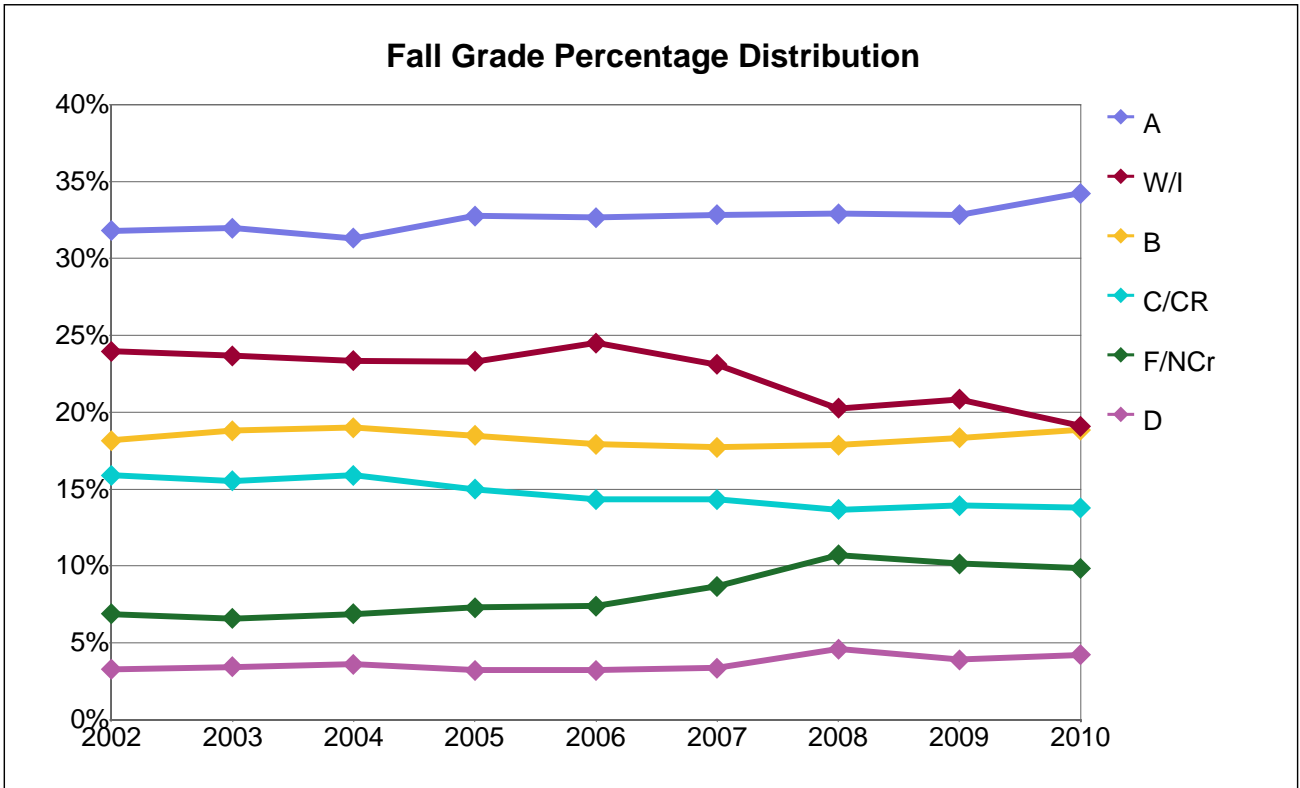
Fall Grade Frequency Distribution

Grade	2002	2003	2004	2005	2006	2007	2008	2009	2010
A	4,351	4,374	4,266	4,313	4,431	4,193	4,463	4,849	4,294
B	2,677	2,809	2,701	2,590	2,683	2,667	2,595	3,000	2,410
C	1,692	1,684	1,635	1,567	1,514	1,520	1,624	1,695	1,370
CR	1,298	1,201	989	910	829	984	627	743	631
D	299	405	364	347	353	349	535	448	511
F	410	434	417	388	511	625	1,382	1,514	1,198
I	262	301	257	222	252	257	8	568	331
NCr	839	944	874	900	920	996	310	341	298
W	2,968	3,424	3,004	2,928	3,373	2,644	2,917	2,562	2,437
Total	14,796	15,576	14,507	14,165	14,866	14,235	14,461	15,720	13,480

Fall Grade Percentage Distribution

Grade	2002	2003	2004	2005	2006	2007	2008	2009	2010
A	29%	28%	29%	30%	30%	29%	31%	31%	32%
B	18%	18%	19%	18%	18%	19%	18%	19%	18%
C	11%	11%	11%	11%	10%	11%	11%	11%	10%
CR	9%	8%	7%	6%	6%	7%	4%	5%	5%
D	2%	3%	3%	2%	2%	2%	4%	3%	4%
F	3%	3%	3%	3%	3%	4%	10%	10%	9%
I	2%	2%	2%	2%	2%	2%	0%	4%	2%
NCr	6%	6%	6%	6%	6%	7%	2%	2%	2%
W	20%	22%	21%	21%	23%	19%	20%	16%	18%
% of Column	100%	100%	100%	100%	100%	100%	100%	100%	100%

Peralta Community College District



Fall Grade Frequency Distribution

Grade	2002	2003	2004	2005	2006	2007	2008	2009	2010
A	20,972	20,344	18,898	19,238	20,728	21,765	23,083	25,679	23,796
B	11,979	11,966	11,458	10,845	11,367	11,742	12,532	14,331	13,100
C	7,705	7,464	7,195	6,799	6,851	7,073	8,054	8,939	8,067
CR	2,778	2,421	2,398	1,999	2,245	2,431	1,531	1,963	1,519
D	2,158	2,182	2,175	1,890	2,036	2,223	3,217	3,057	2,931
F	2,517	2,399	2,529	2,541	2,823	3,381	6,872	7,223	6,291
I	746	781	703	633	674	843	22	1,431	1,110
NCr	2,023	1,794	1,616	1,738	1,873	2,370	642	703	551
W	15,059	14,278	13,386	13,041	14,877	14,479	14,170	14,865	12,167
Total	65,937	63,629	60,358	58,724	63,474	66,307	70,123	78,191	69,532

Fall Grade Percentage Distribution

Grade	2002	2003	2004	2005	2006	2007	2008	2009	2010
A	32%	32%	31%	33%	33%	33%	33%	33%	34%
B	18%	19%	19%	18%	18%	18%	18%	18%	19%
C	12%	12%	12%	12%	11%	11%	11%	11%	12%
CR	4%	4%	4%	3%	4%	4%	2%	3%	2%
D	3%	3%	4%	3%	3%	3%	5%	4%	4%
F	4%	4%	4%	4%	4%	5%	10%	9%	9%
I	1%	1%	1%	1%	1%	1%	0%	2%	2%
NCr	3%	3%	3%	3%	3%	4%	1%	1%	1%
W	23%	22%	22%	22%	23%	22%	20%	19%	17%
Total	100%	100%	100%	100%	100%	100%	100%	100%	100%