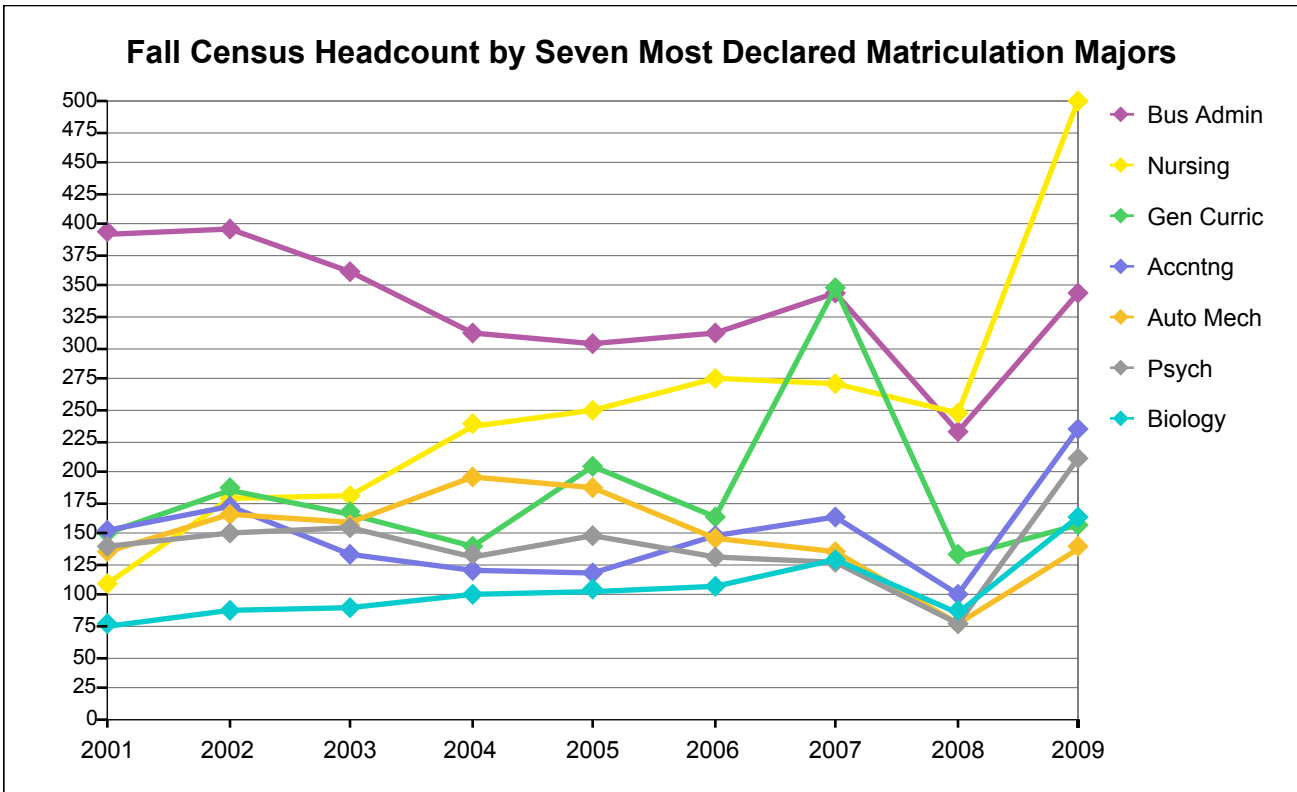


College of Alameda



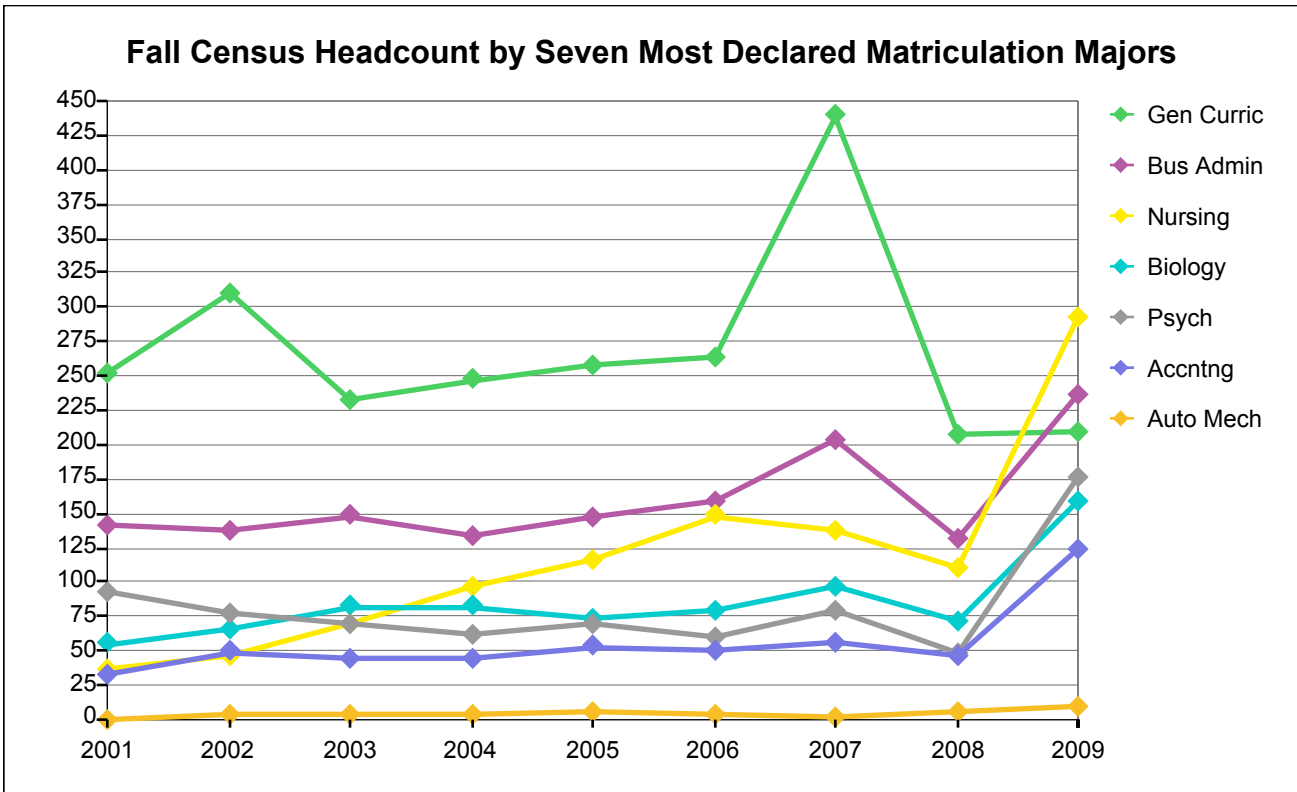
Fall Census Headcount by Seven Most Declared Matriculation Majors

Matric Major	2001	2002	2003	2004	2005	2006	2007	2008	2009
Gen Curric	151	186	167	140	204	163	349	132	157
Bus Admin	393	396	363	313	303	313	345	233	345
Nursing	109	179	181	238	250	276	271	247	500
Acctng	152	172	133	120	119	148	163	101	235
Biology	76	88	90	102	104	108	130	87	164
Psych	140	151	154	132	148	131	126	78	212
Auto Mech	135	166	158	195	187	146	136	78	139
Other	3,225	3,513	3,014	3,031	3,177	3,811	3,705	4,914	3,740
Undecided	1,439	1,326	1,713	1,307	1,226	1,097	1,279	889	2,194
Total	5,820	6,177	5,973	5,578	5,718	6,193	6,504	6,759	7,686

Percentage Distribution of Fall Census Headcount by Seven Most Declared Matriculation Majors

Matric Major	2001	2002	2003	2004	2005	2006	2007	2008	2009
Gen Curric	3%	3%	3%	3%	4%	3%	5%	2%	2%
Bus Admin	7%	6%	6%	6%	5%	5%	5%	3%	4%
Nursing	2%	3%	3%	4%	4%	4%	4%	4%	7%
Acctng	3%	3%	2%	2%	2%	2%	3%	1%	3%
Biology	1%	1%	2%	2%	2%	2%	2%	1%	2%
Psych	2%	2%	3%	2%	3%	2%	2%	1%	3%
Auto Mech	2%	3%	3%	3%	3%	2%	2%	1%	2%
Other	55%	57%	50%	54%	56%	62%	57%	73%	49%
Undecided	25%	21%	29%	23%	21%	18%	20%	13%	29%
Total	100%	100%	100%	100%	100%	100%	100%	100%	100%

Berkeley City College



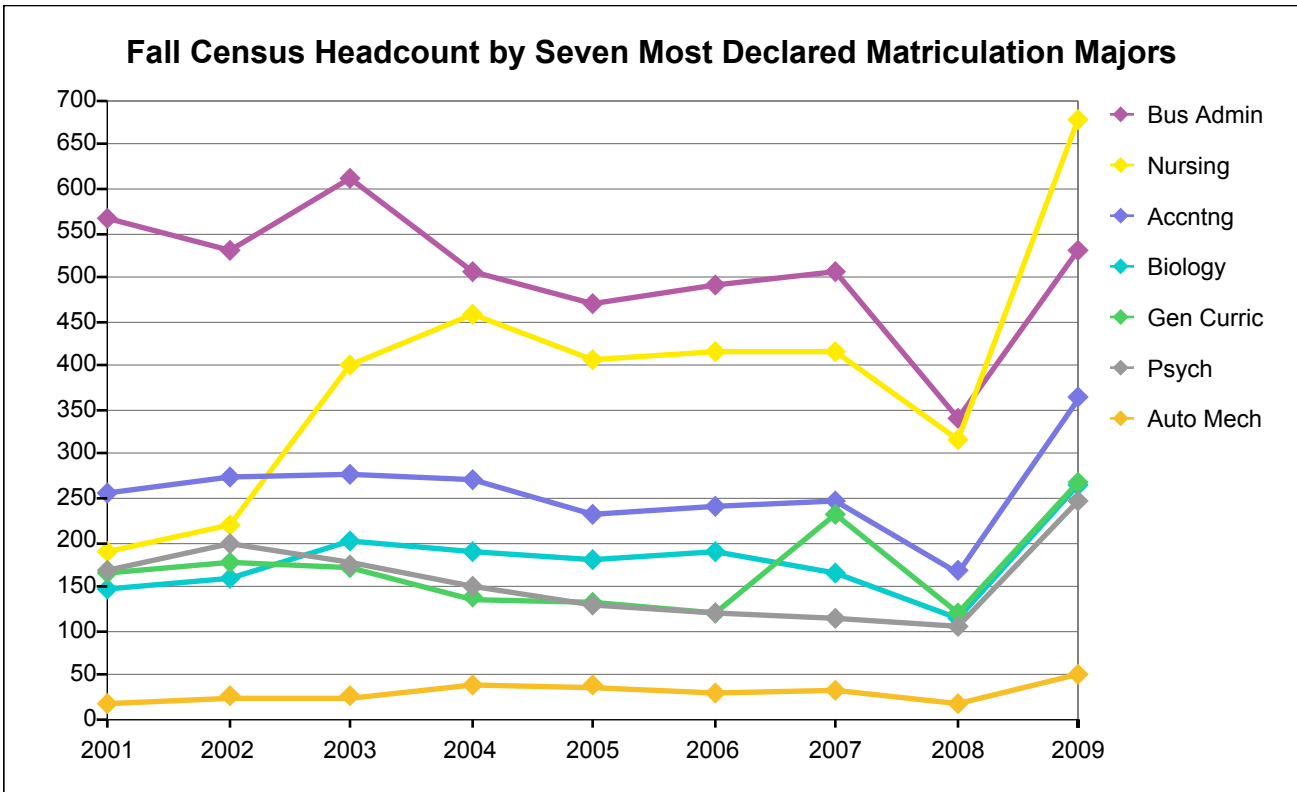
Fall Census Headcount by Seven Most Declared Matriculation Majors

Matric Major	2001	2002	2003	2004	2005	2006	2007	2008	2009
Gen Curric	252	310	233	247	258	264	439	207	209
Bus Admin	141	138	148	134	147	159	204	131	237
Nursing	37	46	70	96	116	148	137	111	292
Acctng	32	49	44	45	53	51	56	47	124
Biology	55	66	82	82	74	80	97	72	159
Psych	93	77	69	61	70	60	80	48	177
Auto Mech		3	3	4	6	3	2	6	10
Other	2,728	2,815	2,455	2,102	2,158	2,674	3,172	4,787	3,756
Undecided	890	969	946	1,236	966	1,123	1,233	832	2,320
Total	4,228	4,473	4,050	4,007	3,848	4,562	5,420	6,241	7,284

Percentage Distribution of Fall Census Headcount by Seven Most Declared Matriculation Majors

Matric Major	2001	2002	2003	2004	2005	2006	2007	2008	2009
Gen Curric	6%	7%	6%	6%	7%	6%	8%	3%	3%
Bus Admin	3%	3%	4%	3%	4%	3%	4%	2%	3%
Nursing	1%	1%	2%	2%	3%	3%	3%	2%	4%
Acctng	1%	1%	1%	1%	1%	1%	1%	1%	2%
Biology	1%	1%	2%	2%	2%	2%	2%	1%	2%
Psych	2%	2%	2%	2%	2%	1%	1%	1%	2%
Auto Mech		0%	0%	0%	0%	0%	0%	0%	0%
Other	65%	63%	61%	52%	56%	59%	59%	77%	52%
Undecided	21%	22%	23%	31%	25%	25%	23%	13%	32%
Total	100%	100%	100%	100%	100%	100%	100%	100%	100%

Laney College



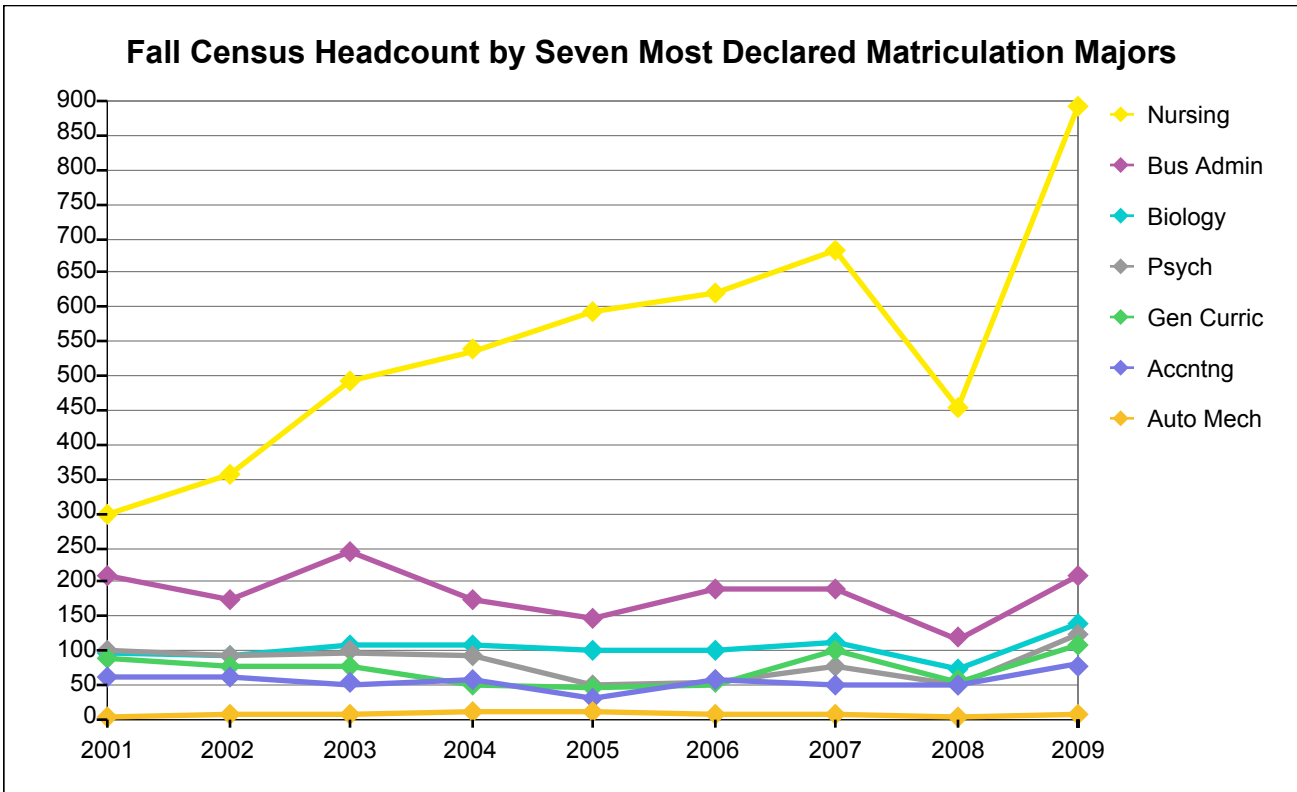
Fall Census Headcount by Seven Most Declared Matriculation Majors

Matric Major	2001	2002	2003	2004	2005	2006	2007	2008	2009
Gen Curric	164	177	171	137	132	120	232	121	269
Bus Admin	568	532	612	508	471	491	506	342	530
Nursing	190	219	400	458	407	415	415	317	679
Acctng	257	273	278	270	232	240	247	167	363
Biology	148	158	202	189	180	190	164	115	265
Psych	168	200	176	150	128	119	113	104	246
Auto Mech	17	25	25	40	37	30	32	18	50
Other	6,980	8,084	7,601	7,616	7,948	7,537	8,270	10,214	8,100
Undecided	4,145	4,324	4,313	3,322	2,373	3,132	2,793	2,010	4,233
Total	12,637	13,992	13,778	12,690	11,908	12,274	12,772	13,408	14,735

Percentage Distribution of Fall Census Headcount by Seven Most Declared Matriculation Majors

Matric Major	2001	2002	2003	2004	2005	2006	2007	2008	2009
Gen Curric	1%	1%	1%	1%	1%	1%	2%	1%	2%
Bus Admin	4%	4%	4%	4%	4%	4%	4%	3%	4%
Nursing	2%	2%	3%	4%	3%	3%	3%	2%	5%
Acctng	2%	2%	2%	2%	2%	2%	2%	1%	2%
Biology	1%	1%	1%	1%	2%	2%	1%	1%	2%
Psych	1%	1%	1%	1%	1%	1%	1%	1%	2%
Auto Mech	0%	0%	0%	0%	0%	0%	0%	0%	0%
Other	55%	58%	55%	60%	67%	61%	65%	76%	55%
Undecided	33%	31%	31%	26%	20%	26%	22%	15%	29%
Total	100%	100%	100%	100%	100%	100%	100%	100%	100%

Merritt College



Fall Census Headcount by Seven Most Declared Matriculation Majors

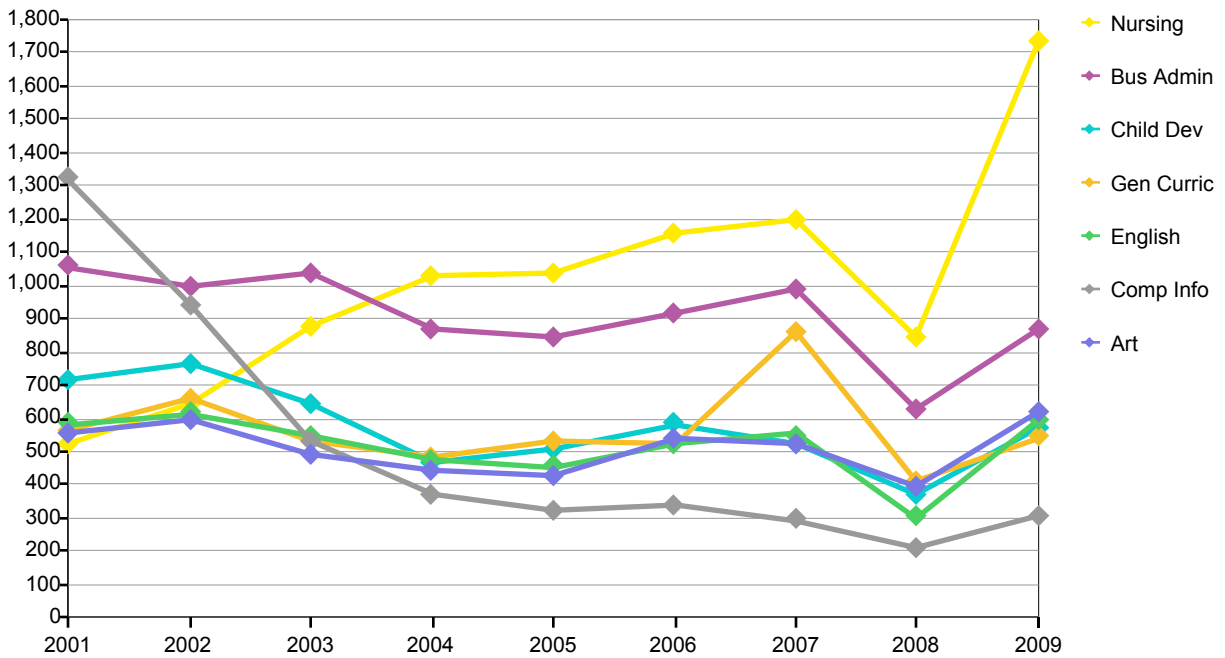
Matric Major	2001	2002	2003	2004	2005	2006	2007	2008	2009
Gen Curric	89	78	76	50	47	52	102	55	109
Bus Admin	210	174	243	174	148	189	191	118	209
Nursing	297	357	491	537	593	620	681	453	892
Acctng	62	60	52	57	31	59	51	49	79
Biology	97	94	109	107	101	102	113	74	138
Psych	102	91	98	93	48	55	77	49	122
Auto Mech	4	8	8	12	10	5	6	4	8
Other	5,171	5,934	5,828	5,506	5,241	5,334	5,326	5,989	4,202
Undecided	1,230	1,099	1,242	968	1,241	1,369	953	624	1,863
Total	7,262	7,895	8,147	7,504	7,460	7,785	7,500	7,415	7,622

Percentage Distribution of Fall Census Headcount by Seven Most Declared Matriculation Majors

Matric Major	2001	2002	2003	2004	2005	2006	2007	2008	2009
Gen Curric	1%	1%	1%	1%	1%	1%	1%	1%	1%
Bus Admin	3%	2%	3%	2%	2%	2%	3%	2%	3%
Nursing	4%	5%	6%	7%	8%	8%	9%	6%	12%
Acctng	1%	1%	1%	1%	0%	1%	1%	1%	1%
Biology	1%	1%	1%	1%	1%	1%	2%	1%	2%
Psych	1%	1%	1%	1%	1%	1%	1%	1%	2%
Auto Mech	0%	0%	0%	0%	0%	0%	0%	0%	0%
Other	71%	75%	72%	73%	70%	69%	71%	81%	55%
Undecided	17%	14%	15%	13%	17%	18%	13%	8%	24%
Total	100%	100%	100%	100%	100%	100%	100%	100%	100%

Peralta Community College District

Fall Census Headcount by Seven Most Declared Matriculation Majors



Fall Census Headcount by Seven Most Declared Matriculation Majors

Matric Majors	2001	2002	2003	2004	2005	2006	2007	2008	2009
Nursing Rn	524	648	877	1,027	1,038	1,155	1,200	847	1,734
Business Adm	1,058	1,000	1,035	866	848	919	988	631	866
General Curr	565	657	531	483	534	521	861	411	544
English	585	617	550	473	455	523	552	303	597
Child Develo	716	768	644	470	506	585	527	371	571
Art	558	598	492	440	432	538	522	398	620
Computer Inf	1,322	942	535	370	325	336	296	212	308
Other	13,993	16,230	15,063	14,965	15,203	15,782	16,868	21,387	15,309
Undecided	6,868	6,914	7,080	5,843	5,010	5,802	5,533	3,661	8,450
Total	26,189	28,374	26,807	24,937	24,351	26,161	27,347	28,221	28,999

Percentage Distribution of Fall Census Headcount by Seven Most Declared Matriculation Majors

Matric Majors	2001	2002	2003	2004	2005	2006	2007	2008	2009
Nursing Rn	2%	2%	3%	4%	4%	4%	4%	3%	6%
Business Adm	4%	4%	4%	3%	3%	4%	4%	2%	3%
General Curr	2%	2%	2%	2%	2%	2%	3%	1%	2%
English	2%	2%	2%	2%	2%	2%	2%	1%	2%
Child Develo	3%	3%	2%	2%	2%	2%	2%	1%	2%
Art	2%	2%	2%	2%	2%	2%	2%	1%	2%
Computer Inf	5%	3%	2%	1%	1%	1%	1%	1%	1%
Other	53%	57%	56%	60%	62%	60%	62%	76%	53%
Undecided	26%	24%	26%	23%	21%	22%	20%	13%	29%
Total	100%	100%	100%	100%	100%	100%	100%	100%	100%