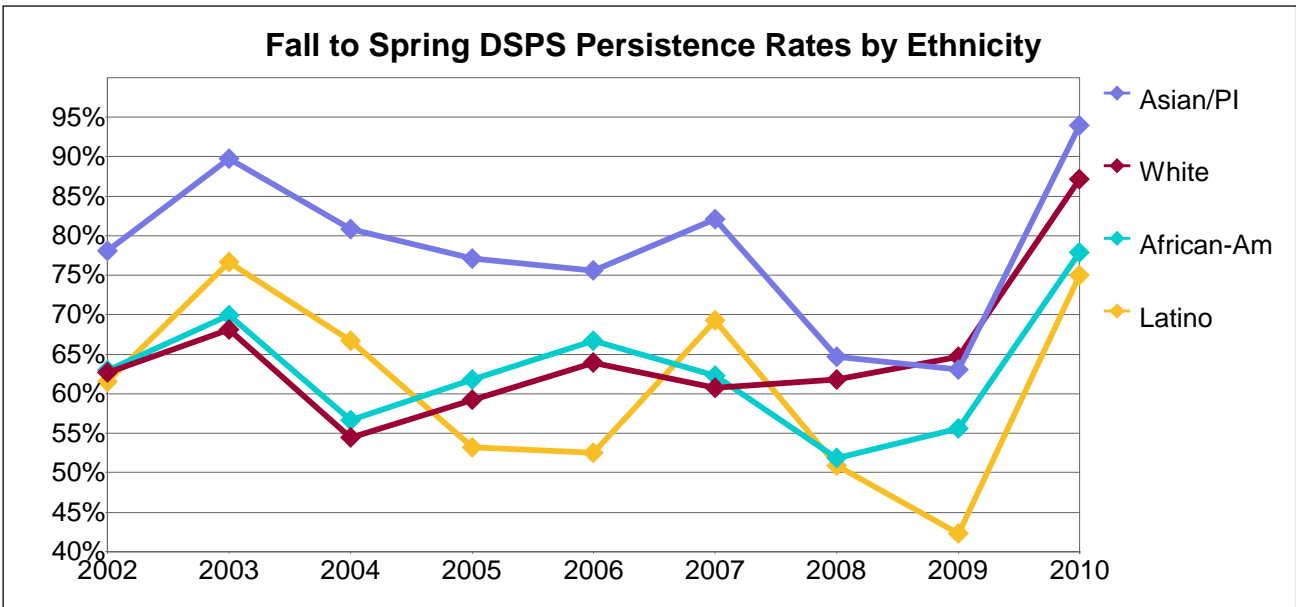


College of Alameda



DSPS Headcount at Fall Census by Ethnicity

Ethnicity	2002	2003	2004	2005	2006	2007	2008	2009	2010
White	83	69	79	81	86	84	68	68	70
African-Am	135	123	159	144	147	130	135	142	145
Asian/PI	41	39	47	48	45	39	51	46	33
Filipino	6	9	6	7	3	2	6	6	5
Latino	39	47	48	47	40	52	53	52	40
Native Am	3	8	3	5	3	4	3	6	2
Other/Unkwn	28	34	23	23	22	30	50	91	97
Total	335	329	365	355	346	341	366	411	392

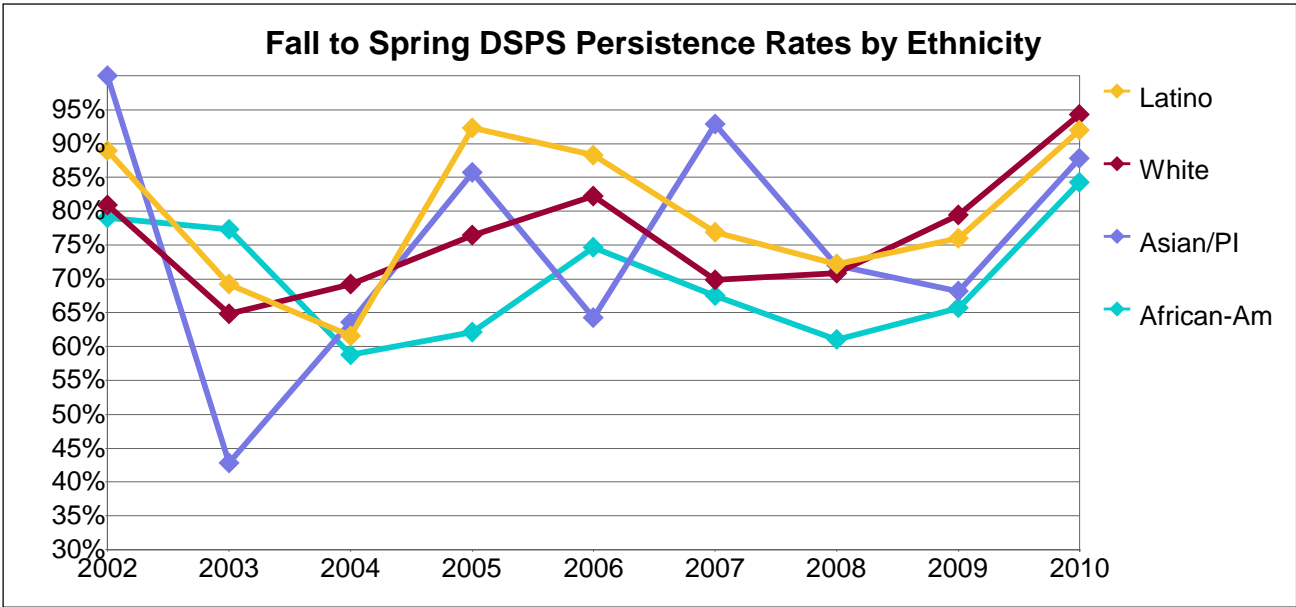
Number of Fall Census DSPS Students Persisting to Spring Opening Day by Ethnicity

Ethnicity	2002	2003	2004	2005	2006	2007	2008	2009	2010
White	52	47	43	48	55	51	42	44	61
African-Am	85	86	90	89	98	81	70	79	113
Asian/PI	32	35	38	37	34	32	33	29	31
Filipino	3	5	4	4	2	2	3	5	5
Latino	24	36	32	25	21	36	27	22	30
Native Am	3	3	3	2	1	3	3	1	1
Other/Unkwn	18	18	12	9	11	15	24	62	87
Total	217	230	222	214	222	220	202	242	328

Fall to Spring DSPS Persistence Rates by Ethnicity

Ethnicity	2002	2003	2004	2005	2006	2007	2008	2009	2010
White	63%	68%	54%	59%	64%	61%	62%	65%	87%
African-Am	63%	70%	57%	62%	67%	62%	52%	56%	78%
Asian/PI	78%	90%	81%	77%	76%	82%	65%	63%	94%
Filipino	50%	56%	67%	57%	67%	100%	50%	83%	100%
Latino	62%	77%	67%	53%	53%	69%	51%	42%	75%
Native Am	100%	38%	100%	40%	33%	75%	100%	17%	50%
Other/Unkwn	64%	53%	52%	39%	50%	50%	48%	68%	90%
Total	65%	70%	61%	60%	64%	65%	55%	59%	84%

Berkeley City College



DSPS Headcount at Fall Census by Ethnicity

Ethnicity	2002	2003	2004	2005	2006	2007	2008	2009	2010
White	47	54	52	51	45	73	103	78	87
African-Am	57	66	68	74	71	83	113	102	95
Asian/PI	9	7	11	7	14	14	25	22	33
Filipino	1		2	2	2	1		2	2
Latino	9	13	13	13	17	26	18	25	25
Native Am	2	2	1	4	4	4	4	4	2
Other/Unkwn	14	15	13	21	23	29	53	57	70
Total	139	157	160	172	176	230	316	290	314

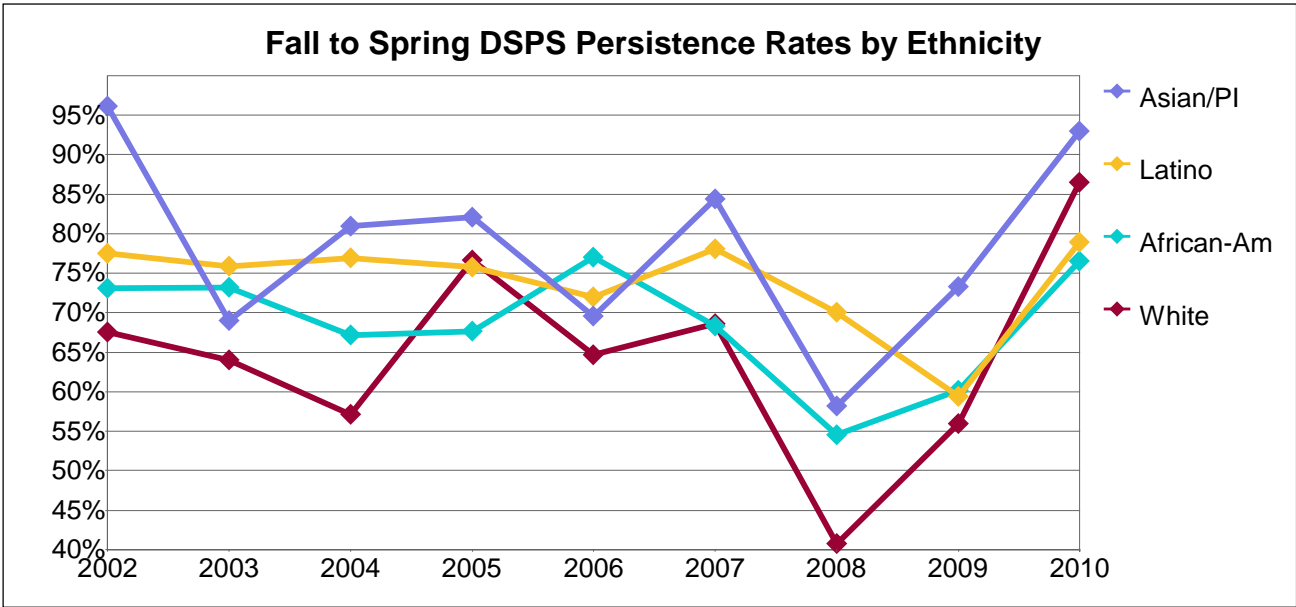
Number of Fall Census DSPS Students Persisting to Spring Opening Day by Ethnicity

Ethnicity	2002	2003	2004	2005	2006	2007	2008	2009	2010
White	38	35	36	39	37	51	73	62	82
African-Am	45	51	40	46	53	56	69	67	80
Asian/PI	9	3	7	6	9	13	18	15	29
Filipino	1		2	2	1			1	2
Latino	8	9	8	12	15	20	13	19	23
Native Am	2	1	1	2	4	2	1	2	2
Other/Unkwn	7	12	9	17	19	19	30	34	64
Total	110	111	103	124	138	161	204	200	282

Fall to Spring DSPS Persistence Rates by Ethnicity

Ethnicity	2002	2003	2004	2005	2006	2007	2008	2009	2010
White	81%	65%	69%	76%	82%	70%	71%	79%	94%
African-Am	79%	77%	59%	62%	75%	67%	61%	66%	84%
Asian/PI	100%	43%	64%	86%	64%	93%	72%	68%	88%
Filipino	100%		100%	100%	50%	0%		50%	100%
Latino	89%	69%	62%	92%	88%	77%	72%	76%	92%
Native Am	100%	50%	100%	50%	100%	50%	25%	50%	100%
Other/Unkwn	50%	80%	69%	81%	83%	66%	57%	60%	91%
Total	79%	71%	64%	72%	78%	70%	65%	69%	90%

Laney College



DSPS Headcount at Fall Census by Ethnicity

Ethnicity	2002	2003	2004	2005	2006	2007	2008	2009	2010
White	37	25	28	30	34	35	54	25	52
African-Am	156	112	128	136	161	183	220	176	183
Asian/PI	26	29	21	28	23	32	43	30	43
Filipino	5	1	3	4	6	6	6	4	1
Latino	40	29	26	33	25	32	40	37	38
Native Am	9	2		1	3	4	2	7	3
Other/Unkwn	22	17	17	15	14	27	58	111	86
Total	295	215	223	247	266	319	423	390	406

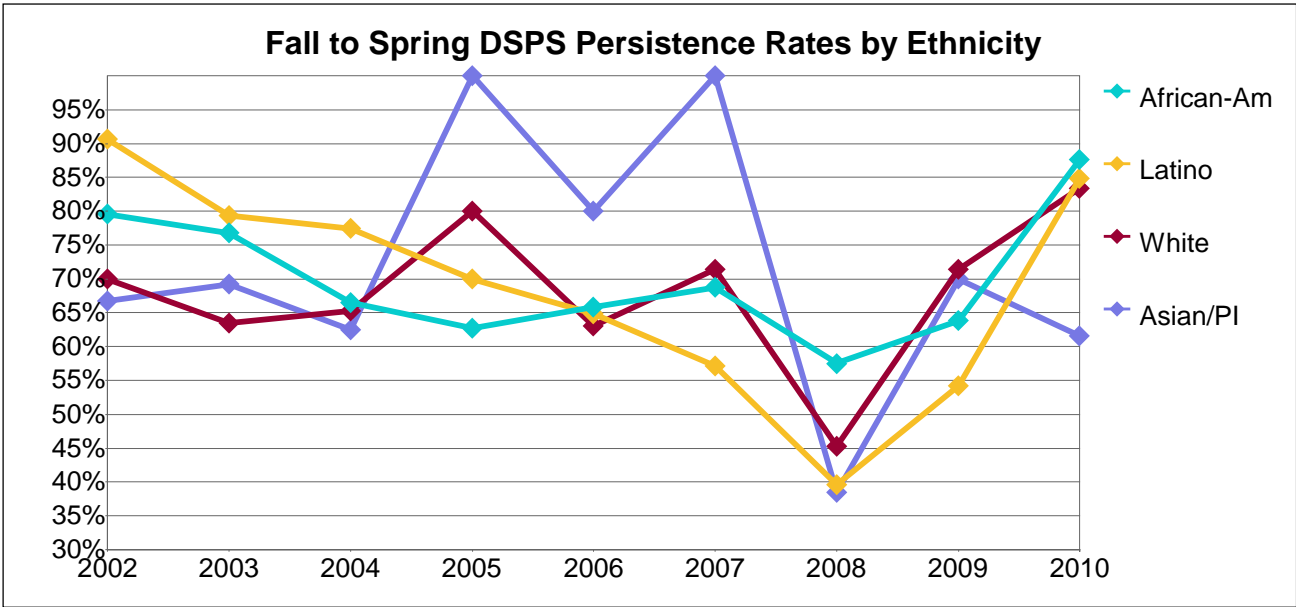
Number of Fall Census DSPS Students Persisting to Spring Opening Day by Ethnicity

Ethnicity	2002	2003	2004	2005	2006	2007	2008	2009	2010
White	25	16	16	23	22	24	22	14	45
African-Am	114	82	86	92	124	125	120	106	140
Asian/PI	25	20	17	23	16	27	25	22	40
Filipino	4	1	3	4	5	2		2	1
Latino	31	22	20	25	18	25	28	22	30
Native Am	7	1		1	1	2	1	4	3
Other/Unkwn	13	12	12	11	10	17	32	70	72
Total	219	154	154	179	196	222	228	240	331

Fall to Spring DSPS Persistence Rates by Ethnicity

Ethnicity	2002	2003	2004	2005	2006	2007	2008	2009	2010
White	68%	64%	57%	77%	65%	69%	41%	56%	87%
African-Am	73%	73%	67%	68%	77%	68%	55%	60%	77%
Asian/PI	96%	69%	81%	82%	70%	84%	58%	73%	93%
Filipino	80%	100%	100%	100%	83%	33%	0%	50%	100%
Latino	78%	76%	77%	76%	72%	78%	70%	59%	79%
Native Am	78%	50%		100%	33%	50%	50%	57%	100%
Other/Unkwn	59%	71%	71%	73%	71%	63%	55%	63%	84%
Total	74%	72%	69%	72%	74%	70%	54%	62%	82%

Merritt College



DSPS Headcount at Fall Census by Ethnicity

Ethnicity	2002	2003	2004	2005	2006	2007	2008	2009	2010
White	50	52	49	10	46	28	53	28	48
African-Am	137	198	167	51	152	115	200	116	162
Asian/PI	9	13	8	2	5	6	13	10	13
Filipino	4	5	4	1	3	1	7	6	4
Latino	32	29	31	10	37	21	48	24	33
Native Am	5	6	6		4	1	5	4	4
Other/Unkwn	11	18	15	7	23	12	46	56	62
Total	248	321	280	81	270	184	372	244	326

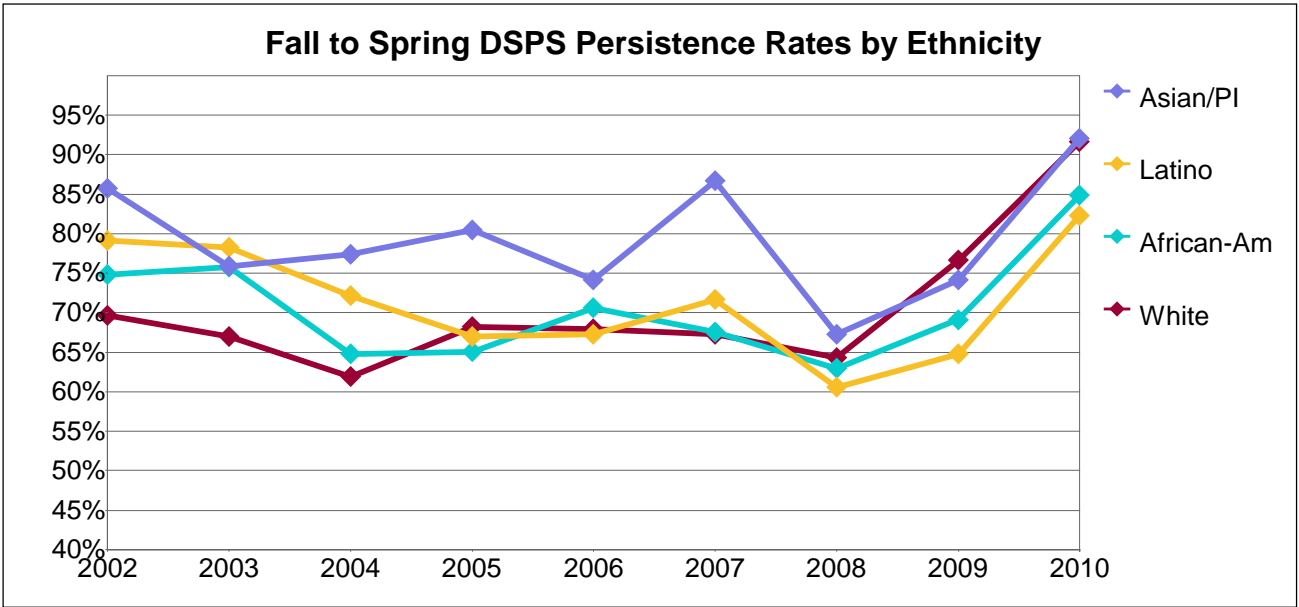
Number of Fall Census DSPS Students Persisting to Spring Opening Day by Ethnicity

Ethnicity	2002	2003	2004	2005	2006	2007	2008	2009	2010
White	35	33	32	8	29	20	24	20	40
African-Am	109	152	111	32	100	79	115	74	142
Asian/PI	6	9	5	2	4	6	5	7	8
Filipino	3	4	3	1	2	1	5	4	4
Latino	29	23	24	7	24	12	19	13	28
Native Am	3	4	3		2	1	2	1	3
Other/Unkwn	9	10	11	4	15	11	28	29	51
Total	194	235	189	54	176	130	198	148	276

Fall to Spring DSPS Persistence Rates by Ethnicity

Ethnicity	2002	2003	2004	2005	2006	2007	2008	2009	2010
White	70%	63%	65%	80%	63%	71%	45%	71%	83%
African-Am	80%	77%	66%	63%	66%	69%	58%	64%	88%
Asian/PI	67%	69%	63%	100%	80%	100%	38%	70%	62%
Filipino	75%	80%	75%	100%	67%	100%	71%	67%	100%
Latino	91%	79%	77%	70%	65%	57%	40%	54%	85%
Native Am	60%	67%	50%		50%	100%	40%	25%	75%
Other/Unkwn	82%	56%	73%	57%	65%	92%	61%	52%	82%
Total	78%	73%	68%	67%	65%	71%	53%	61%	85%

Peralta Community College District



DSPS Headcount at Fall Census by Ethnicity

Ethnicity	2002	2003	2004	2005	2006	2007	2008	2009	2010
White	214	191	202	167	206	214	238	171	215
African-Am	468	479	502	395	520	496	556	434	483
Asian/PI	84	87	84	82	85	90	110	89	101
Filipino	16	14	15	13	14	10	13	14	12
Latino	115	115	115	100	113	127	132	105	113
Native Am	18	18	10	10	13	13	11	14	8
Other/Unkwn	73	81	64	63	75	88	163	279	264
Total	988	985	992	830	1,026	1,038	1,223	1,106	1,196

Number of Fall Census DSPS Students Persisting to Spring Opening Day by Ethnicity

Ethnicity	2002	2003	2004	2005	2006	2007	2008	2009	2010
White	149	128	125	114	140	144	153	131	197
African-Am	350	363	325	257	367	335	350	300	410
Asian/PI	72	66	65	66	63	78	74	66	93
Filipino	11	10	12	10	10	5	7	10	12
Latino	91	90	83	67	76	91	80	68	93
Native Am	14	9	7	5	8	8	6	7	7
Other/Unkwn	47	52	43	40	52	56	99	187	238
Total	734	718	660	559	716	717	769	769	1,050

Fall to Spring DSPS Persistence Rates by Ethnicity

Ethnicity	2002	2003	2004	2005	2006	2007	2008	2009	2010
White	70%	67%	62%	68%	68%	67%	64%	77%	92%
African-Am	75%	76%	65%	65%	71%	68%	63%	69%	85%
Asian/PI	86%	76%	77%	80%	74%	87%	67%	74%	92%
Filipino	69%	71%	80%	77%	71%	50%	54%	71%	100%
Latino	79%	78%	72%	67%	67%	72%	61%	65%	82%
Native Am	78%	50%	70%	50%	62%	62%	55%	50%	88%
Other/Unkwn	64%	64%	67%	63%	69%	64%	61%	67%	90%
Total	74%	73%	67%	67%	70%	69%	63%	70%	88%