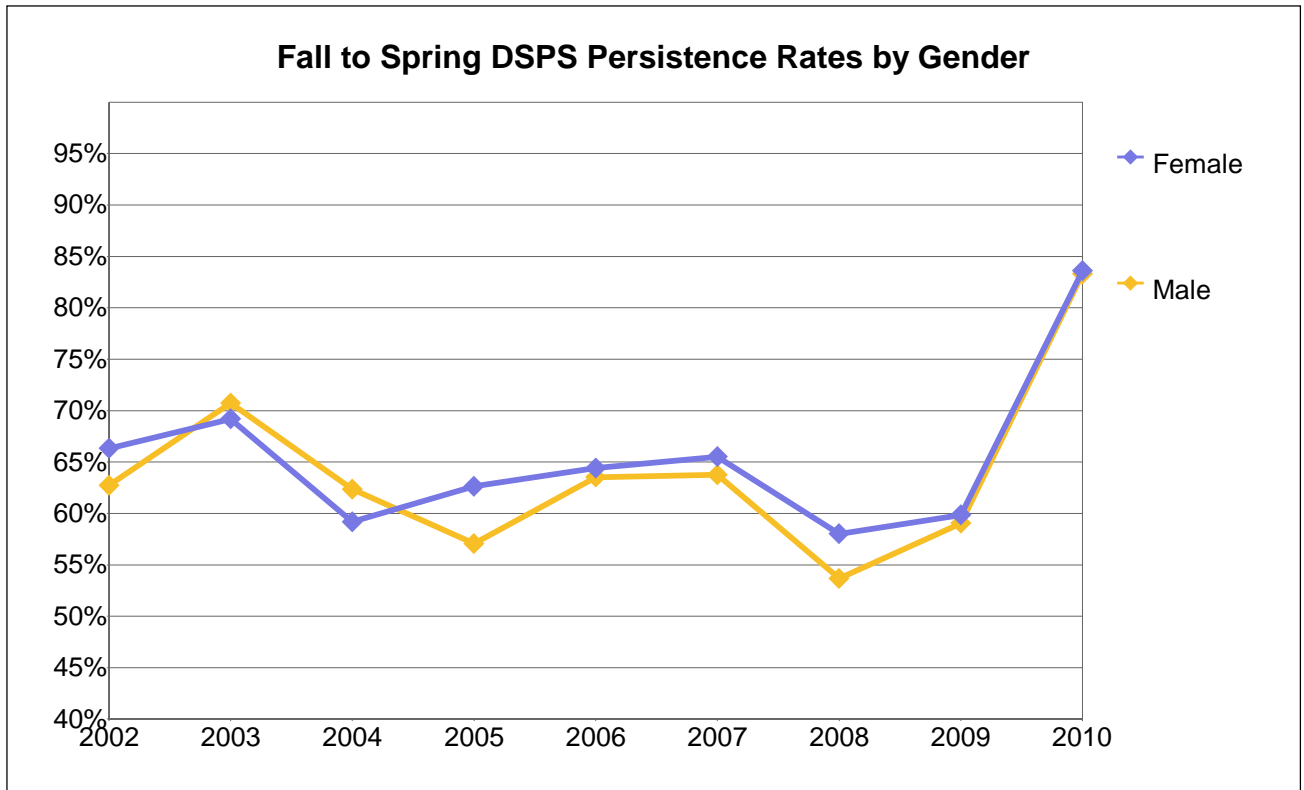


College of Alameda



DSPS Headcount at Fall Census by Gender

Gender	2002	2003	2004	2005	2006	2007	2008	2009	2010
Female	187	195	196	182	194	180	200	217	189
Male	145	130	162	170	151	160	149	171	168
Unkwn	3	4	7	3	1	1	17	23	35
Total	335	329	365	355	346	341	366	411	392

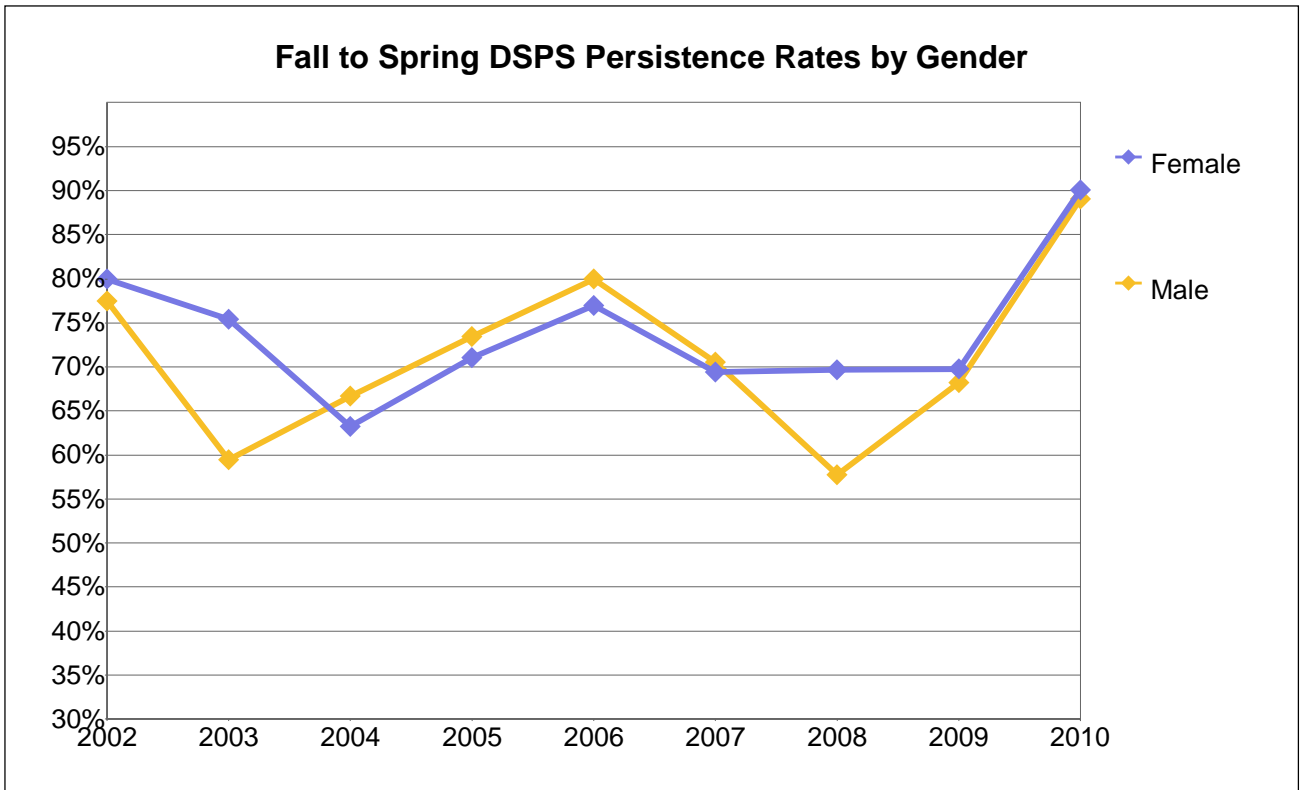
Number of Fall Census DSPS Students Persisting to Spring Opening Day by Gender

Gender	2002	2003	2004	2005	2006	2007	2008	2009	2010
Female	124	135	116	114	125	118	116	130	158
Male	91	92	101	97	96	102	80	101	140
Unkwn	2	3	5	3	1		6	11	30
Total	217	230	222	214	222	220	202	242	328

Fall to Spring DSPS Persistence Rates by Gender

Gender	2002	2003	2004	2005	2006	2007	2008	2009	2010
Female	66%	69%	59%	63%	64%	66%	58%	60%	84%
Male	63%	71%	62%	57%	64%	64%	54%	59%	83%
Unkwn	67%	75%	71%	100%	100%	0%	35%	48%	86%
Total	65%	70%	61%	60%	64%	65%	55%	59%	84%

Berkeley City College



DSPS Headcount at Fall Census by Gender

Gender	2002	2003	2004	2005	2006	2007	2008	2009	2010
Female	95	114	106	121	104	134	178	172	182
Male	40	37	51	49	70	95	130	110	119
Unkwn	4	6	3	2	2	1	8	8	13
Total	139	157	160	172	176	230	316	290	314

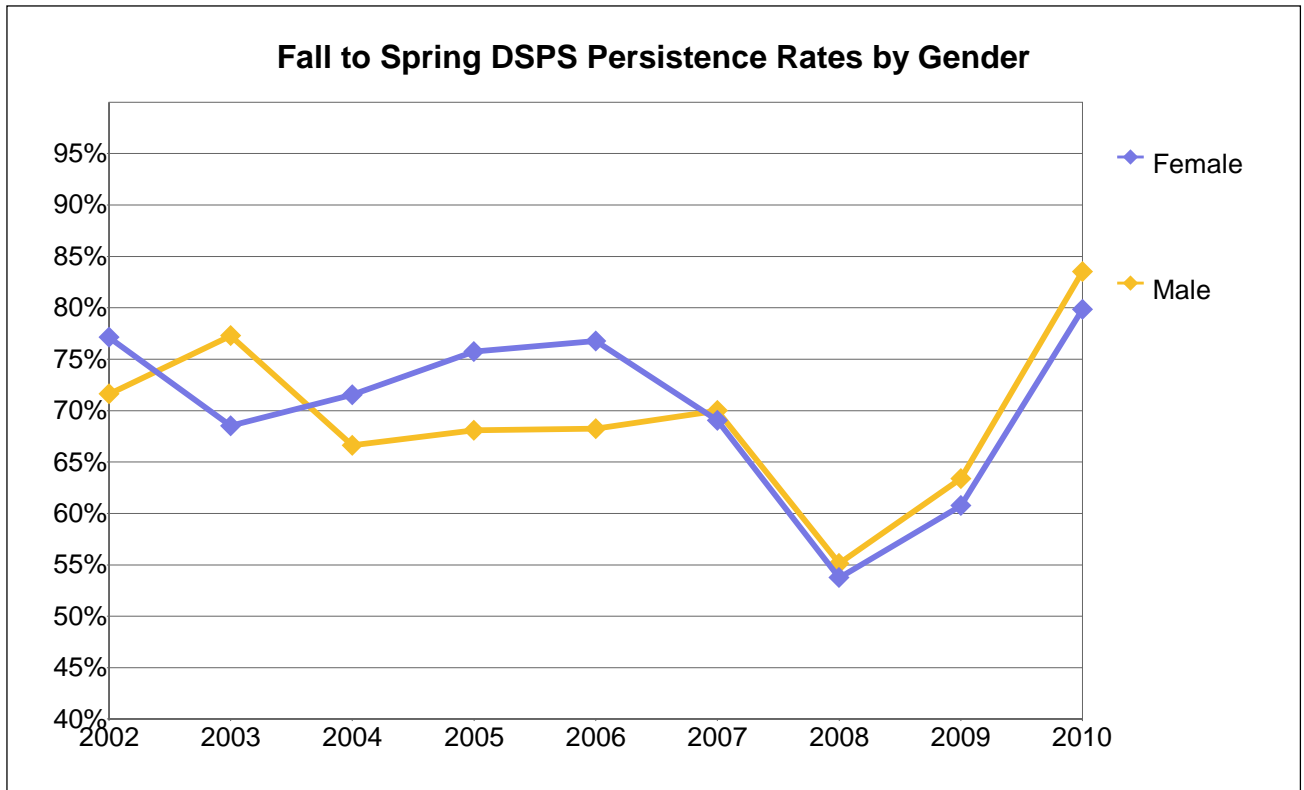
Number of Fall Census DSPS Students Persisting to Spring Opening Day by Gender

Gender	2002	2003	2004	2005	2006	2007	2008	2009	2010
Female	76	86	67	86	80	93	124	120	164
Male	31	22	34	36	56	67	75	75	106
Unkwn	3	3	2	2	2	1	5	5	12
Total	110	111	103	124	138	161	204	200	282

Fall to Spring DSPS Persistence Rates by Gender

Gender	2002	2003	2004	2005	2006	2007	2008	2009	2010
Female	80%	75%	63%	71%	77%	69%	70%	70%	90%
Male	78%	59%	67%	73%	80%	71%	58%	68%	89%
Unkwn	75%	50%	67%	100%	100%	100%	63%	63%	92%
Total	79%	71%	64%	72%	78%	70%	65%	69%	90%

Laney College



DSPS Headcount at Fall Census by Gender

Gender	2002	2003	2004	2005	2006	2007	2008	2009	2010
Female	171	124	116	128	155	178	240	204	204
Male	120	88	102	113	107	140	174	164	170
Unkwn	4	3	5	6	4	1	9	22	32
Total	295	215	223	247	266	319	423	390	406

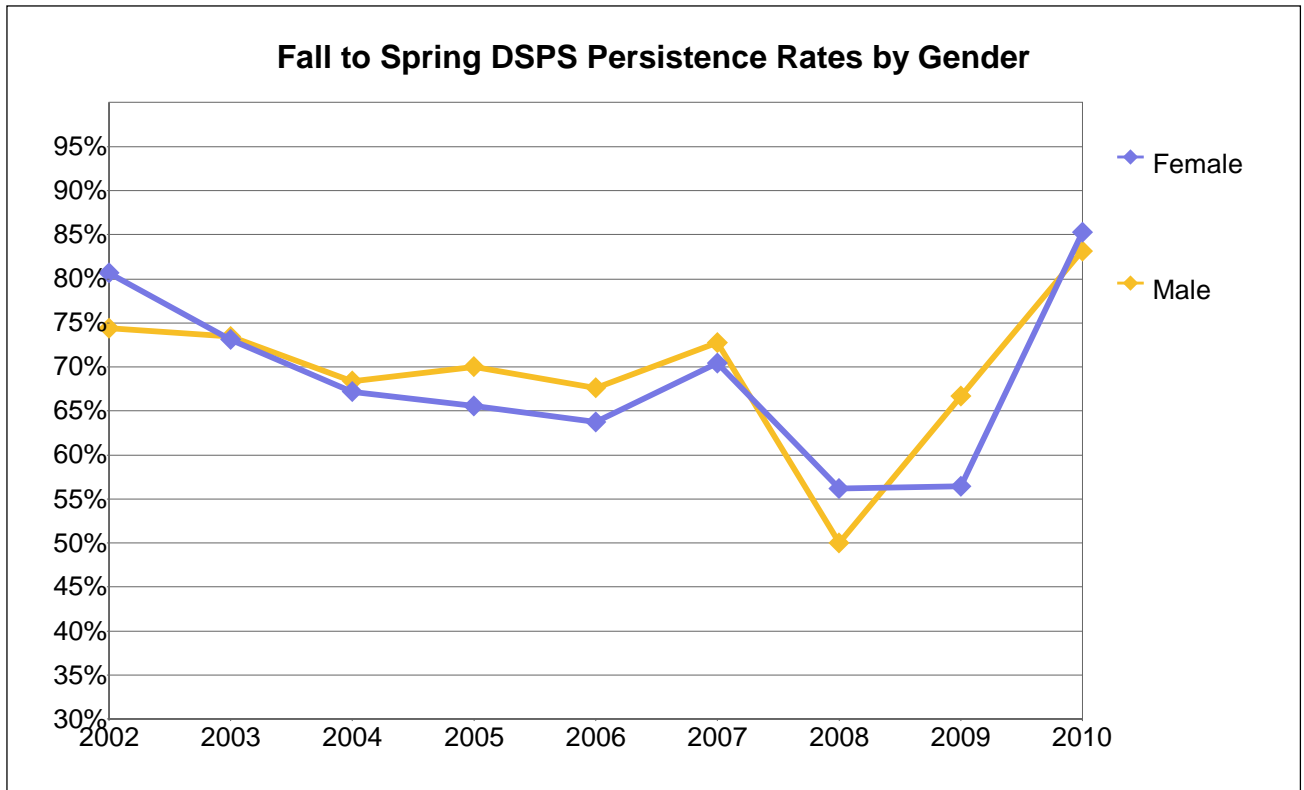
Number of Fall Census DSPS Students Persisting to Spring Opening Day by Gender

Gender	2002	2003	2004	2005	2006	2007	2008	2009	2010
Female	132	85	83	97	119	123	129	124	163
Male	86	68	68	77	73	98	96	104	142
Unkwn	1	1	3	5	4	1	3	12	26
Total	219	154	154	179	196	222	228	240	331

Fall to Spring DSPS Persistence Rates by Gender

Gender	2002	2003	2004	2005	2006	2007	2008	2009	2010
Female	77%	69%	72%	76%	77%	69%	54%	61%	80%
Male	72%	77%	67%	68%	68%	70%	55%	63%	84%
Unkwn	25%	33%	60%	83%	100%	100%	33%	55%	81%
Total	74%	72%	69%	72%	74%	70%	54%	62%	82%

Merritt College



DSPS Headcount at Fall Census by Gender

Gender	2002	2003	2004	2005	2006	2007	2008	2009	2010
Female	165	223	198	58	193	125	233	156	197
Male	82	98	79	20	74	55	130	78	101
Unkwn	1		3	3	3	4	9	10	28
Total	248	321	280	81	270	184	372	244	326

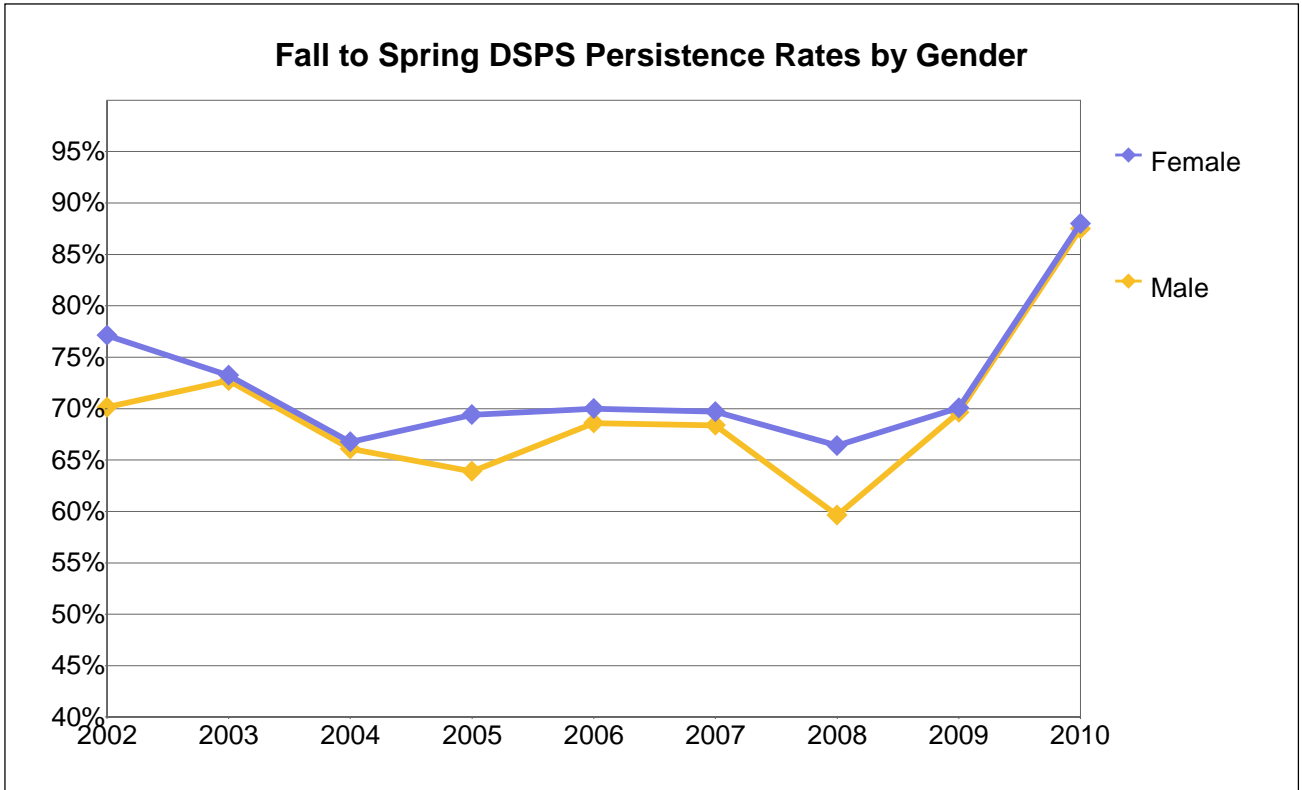
Number of Fall Census DSPS Students Persisting to Spring Opening Day by Gender

Gender	2002	2003	2004	2005	2006	2007	2008	2009	2010
Female	133	163	133	38	123	88	131	88	168
Male	61	72	54	14	50	40	65	52	84
Unkwn			2	2	3	2	2	8	24
Total	194	235	189	54	176	130	198	148	276

Fall to Spring DSPS Persistence Rates by Gender

Gender	2002	2003	2004	2005	2006	2007	2008	2009	2010
Female	81%	73%	67%	66%	64%	70%	56%	56%	85%
Male	74%	73%	68%	70%	68%	73%	50%	67%	83%
Unkwn	0%		67%	67%	100%	50%	22%	80%	86%
Total	78%	73%	68%	67%	65%	71%	53%	61%	85%

Peralta Community College District



DSPS Headcount at Fall Census by Gender

Gender	2002	2003	2004	2005	2006	2007	2008	2009	2010
Female	596	628	593	474	624	592	700	608	635
Male	382	345	381	344	392	440	483	442	466
Unkwn	10	12	18	12	10	6	40	56	95
Total	988	985	992	830	1,026	1,038	1,223	1,106	1,196

Number of Fall Census DSPS Students Persisting to Spring Opening Day by Gender

Gender	2002	2003	2004	2005	2006	2007	2008	2009	2010
Female	460	460	396	329	437	413	465	426	559
Male	268	251	252	220	269	301	288	308	408
Unkwn	6	7	12	10	10	3	16	35	83
Total	734	718	660	559	716	717	769	769	1,050

Fall to Spring DSPS Persistence Rates by Gender

Gender	2002	2003	2004	2005	2006	2007	2008	2009	2010
Female	77%	73%	67%	69%	70%	70%	66%	70%	88%
Male	70%	73%	66%	64%	69%	68%	60%	70%	88%
Unkwn	60%	58%	67%	83%	100%	50%	40%	63%	87%
Total	74%	73%	67%	67%	70%	69%	63%	70%	88%