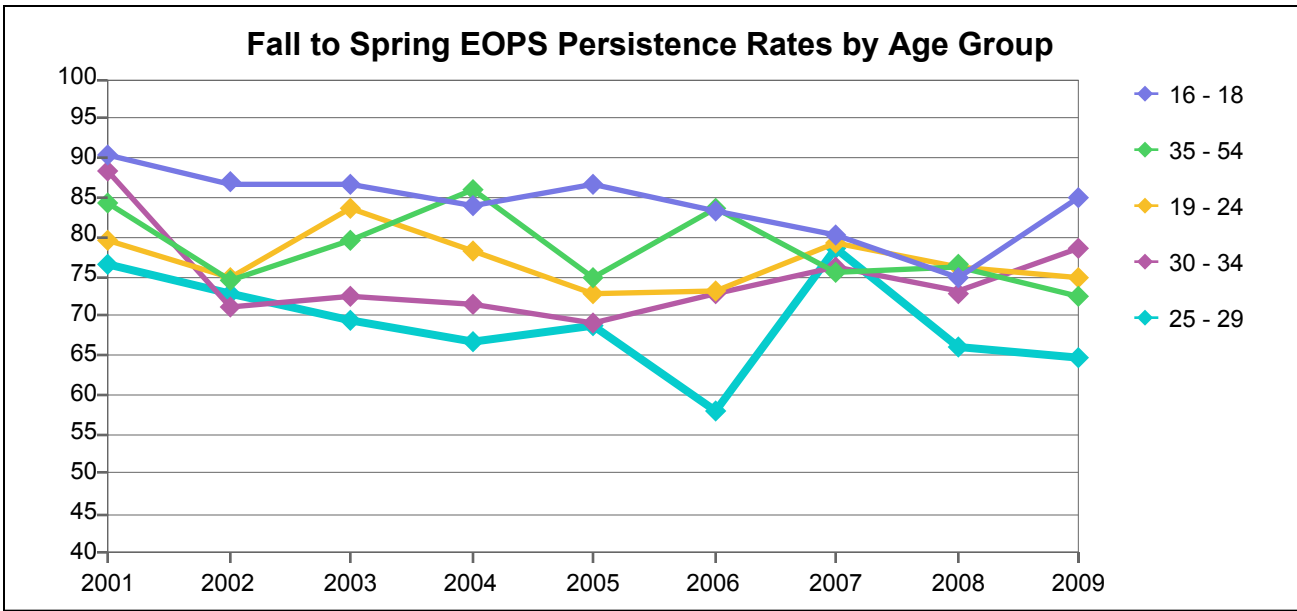


College of Alameda



EOPS Headcount at Fall Census by Age Group

Age Group	2001	2002	2003	2004	2005	2006	2007	2008	2009
16 - 18	92	91	30	50	67	48	86	88	40
19 - 24	271	340	294	242	205	228	259	202	223
25 - 29	51	55	49	60	61	57	61	65	54
30 - 34	26	38	29	42	39	33	38	37	42
35 - 54	83	102	78	86	96	85	94	72	58
55 - 64	7	10	7	8	6	10	13	15	13
65 and Over	3	4	3	3	3	3	2	3	2
Total	533	640	490	491	477	464	553	482	432

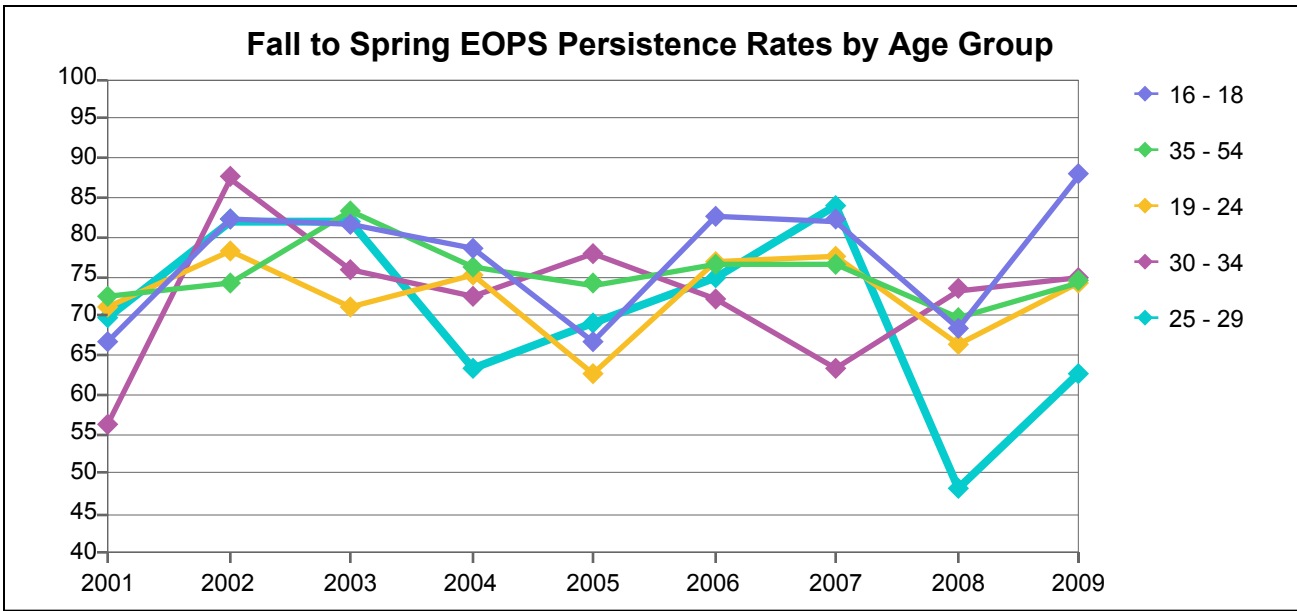
Number of Fall EOPS Students Persisting to Spring Opening Day by Age Group

Age Group	2001	2002	2003	2004	2005	2006	2007	2008	2009
16 - 18	83	79	26	42	58	40	69	66	34
19 - 24	216	254	246	189	149	167	205	154	167
25 - 29	39	40	34	40	42	33	48	43	35
30 - 34	23	27	21	30	27	24	29	27	33
35 - 54	70	76	62	74	72	71	71	55	42
55 - 64	6	8	6	5	3	8	11	13	13
65 and Over	3	4	3	2	3	3	2	3	2
Total	440	488	398	382	354	346	435	361	326

Fall to Spring EOPS Persistence Rates by Age Group

Age Group	2001	2002	2003	2004	2005	2006	2007	2008	2009
16 - 18	90	87	87	84	87	83	80	75	85
19 - 24	80	75	84	78	73	73	79	76	75
25 - 29	76	73	69	67	69	58	79	66	65
30 - 34	88	71	72	71	69	73	76	73	79
35 - 54	84	75	79	86	75	84	76	76	72
55 - 64	86	80	86	63	50	80	85	87	100
65 and Over	100	100	100	67	100	100	100	100	100
Total	83	76	81	78	74	75	79	75	75

Berkeley City College



EOPS Headcount at Fall Census by Age Group

Age Group	2001	2002	2003	2004	2005	2006	2007	2008	2009
16 - 18	27	34	27	28	33	23	28	41	33
19 - 24	118	124	111	141	137	108	107	119	112
25 - 29	43	56	39	49	58	44	50	58	43
30 - 34	32	24	29	40	36	36	30	30	24
35 - 54	80	74	72	92	100	102	98	99	78
55 - 64	3	6	8	12	15	12	7	10	6
65 and Over		1	1	1	1	2	2		1
Total	303	319	287	363	380	327	322	357	297

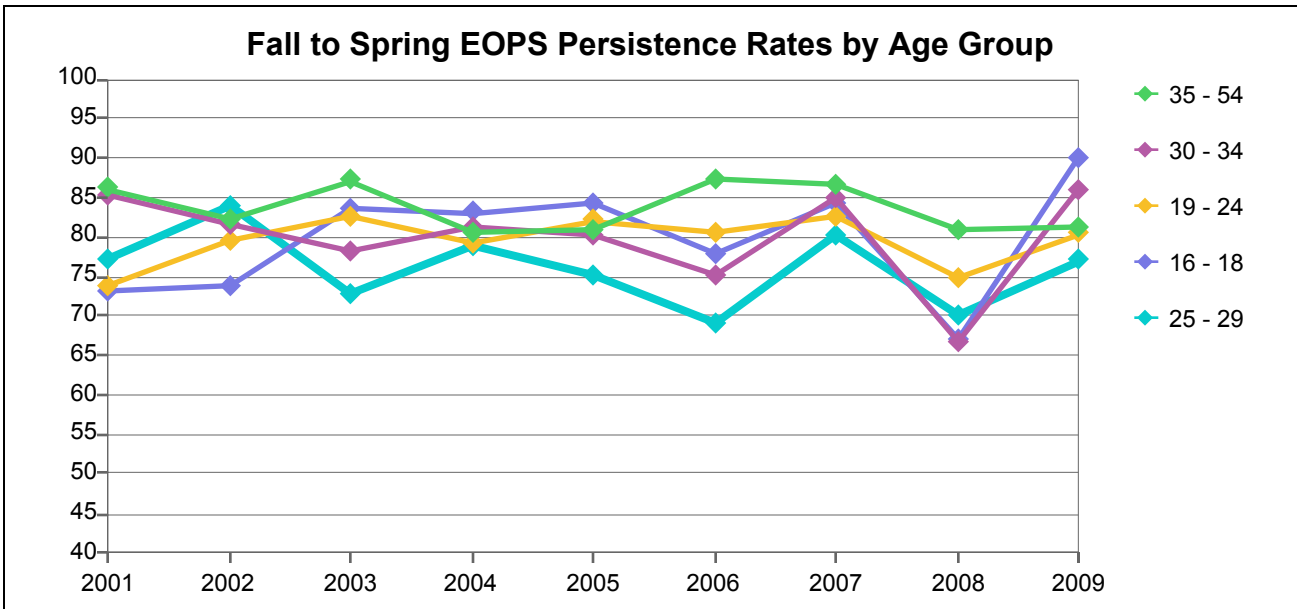
Number of Fall EOPS Students Persisting to Spring Opening Day by Age Group

Age Group	2001	2002	2003	2004	2005	2006	2007	2008	2009
16 - 18	18	28	22	22	22	19	23	28	29
19 - 24	84	97	79	106	86	83	83	79	83
25 - 29	30	46	32	31	40	33	42	28	27
30 - 34	18	21	22	29	28	26	19	22	18
35 - 54	58	55	60	70	74	78	75	69	58
55 - 64	2	5	8	10	9	8	3	4	3
65 and Over		1	1		1	1	2		1
Total	210	253	224	268	260	248	247	230	219

Fall to Spring EOPS Persistence Rates by Age Group

Age Group	2001	2002	2003	2004	2005	2006	2007	2008	2009
16 - 18	67	82	81	79	67	83	82	68	88
19 - 24	71	78	71	75	63	77	78	66	74
25 - 29	70	82	82	63	69	75	84	48	63
30 - 34	56	88	76	73	78	72	63	73	75
35 - 54	73	74	83	76	74	76	77	70	74
55 - 64	67	83	100	83	60	67	43	40	50
65 and Over		100	100	0	100	50	100		100
Total	69	79	78	74	68	76	77	64	74

Laney College



EOPS Headcount at Fall Census by Age Group

Age Group	2001	2002	2003	2004	2005	2006	2007	2008	2009
16 - 18	63	38	61	71	32	59	19	82	30
19 - 24	284	248	307	338	285	322	275	372	316
25 - 29	105	105	118	119	105	117	112	131	109
30 - 34	89	87	101	113	107	121	80	111	85
35 - 54	281	253	265	291	282	290	253	310	262
55 - 64	33	29	23	30	30	48	58	65	49
65 and Over	34	29	21	18	20	20	19	17	12
Total	889	789	896	980	861	977	816	1,088	863

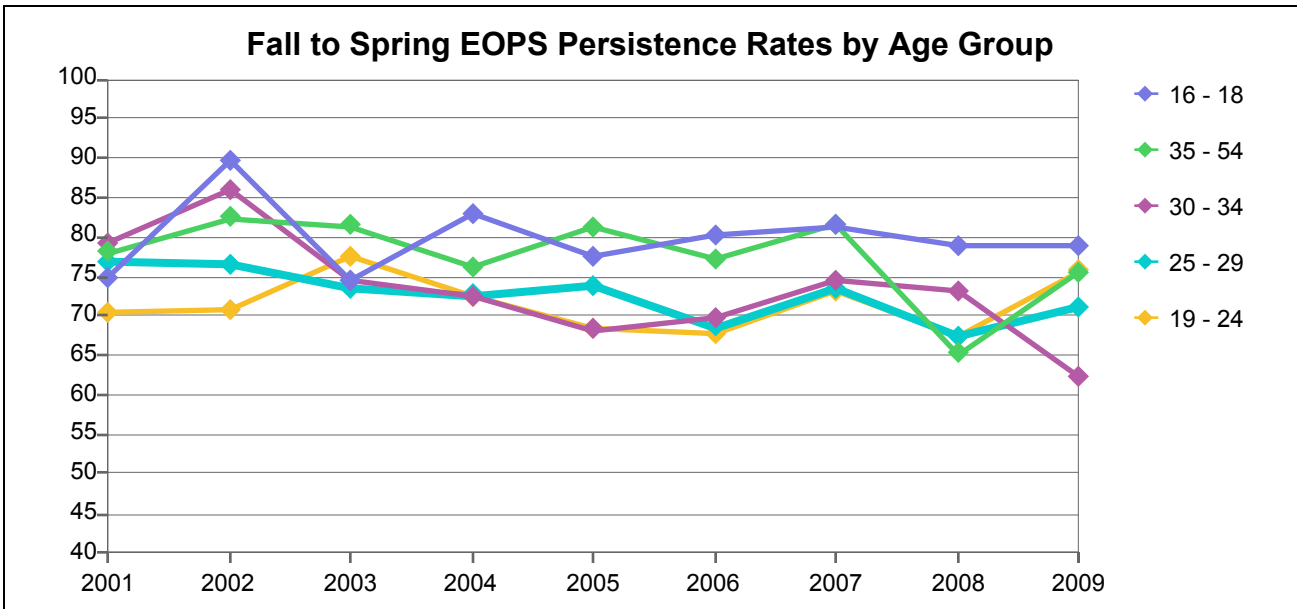
Number of Fall EOPS Students Persisting to Spring Opening Day by Age Group

Age Group	2001	2002	2003	2004	2005	2006	2007	2008	2009
16 - 18	46	28	51	59	27	46	16	55	27
19 - 24	210	197	254	268	234	259	227	278	254
25 - 29	81	88	86	94	79	81	90	92	84
30 - 34	76	71	79	92	86	91	68	74	73
35 - 54	242	208	231	235	228	253	219	251	213
55 - 64	31	26	22	23	28	43	52	49	39
65 and Over	31	26	18	15	18	19	19	15	10
Total	717	644	741	786	700	792	691	814	700

Fall to Spring EOPS Persistence Rates by Age Group

Age Group	2001	2002	2003	2004	2005	2006	2007	2008	2009
16 - 18	73	74	84	83	84	78	84	67	90
19 - 24	74	79	83	79	82	80	83	75	80
25 - 29	77	84	73	79	75	69	80	70	77
30 - 34	85	82	78	81	80	75	85	67	86
35 - 54	86	82	87	81	81	87	87	81	81
55 - 64	94	90	96	77	93	90	90	75	80
65 and Over	91	90	86	83	90	95	100	88	83
Total	81	82	83	80	81	81	85	75	81

Merritt College



EOPS Headcount at Fall Census by Age Group

Age Group	2001	2002	2003	2004	2005	2006	2007	2008	2009
16 - 18	40	49	63	53	62	61	70	52	33
19 - 24	214	243	271	281	243	230	230	215	181
25 - 29	100	115	124	128	118	102	68	77	62
30 - 34	67	85	86	98	85	63	63	63	45
35 - 54	159	199	237	257	234	198	157	178	142
55 - 64	15	15	23	31	35	37	32	35	24
65 and Over	1						1	3	3
Total	596	706	804	848	777	691	621	623	490

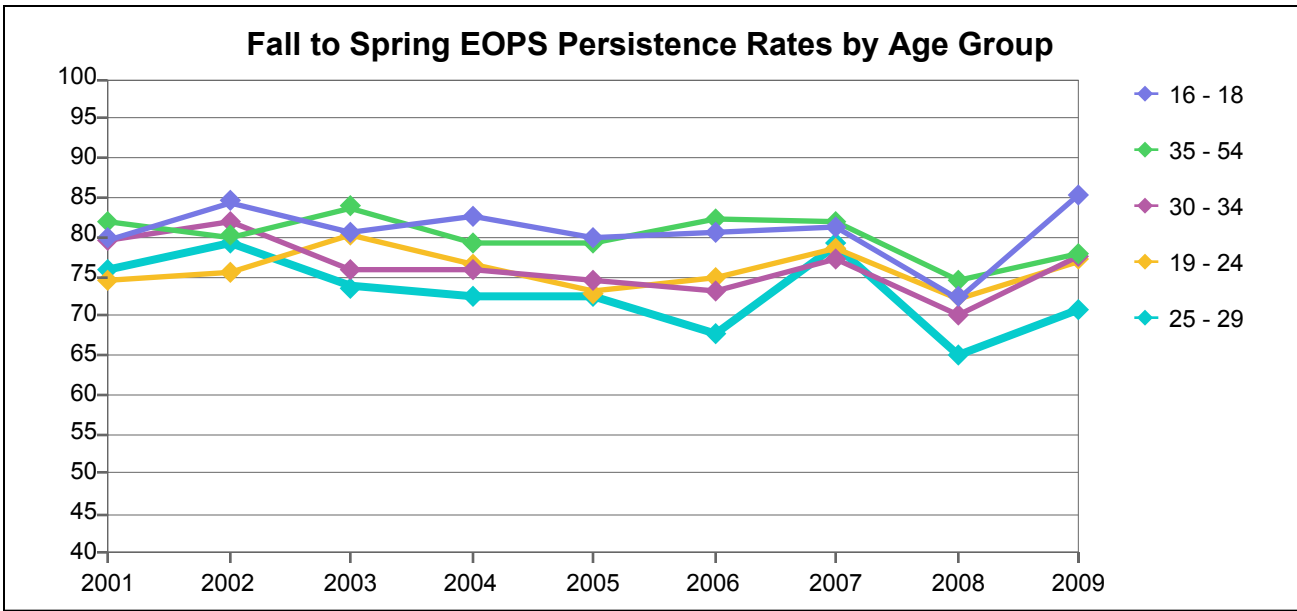
Number of Fall EOPS Students Persisting to Spring Opening Day by Age Group

Age Group	2001	2002	2003	2004	2005	2006	2007	2008	2009
16 - 18	30	44	47	44	48	49	57	41	26
19 - 24	151	172	210	204	166	156	168	145	137
25 - 29	77	88	91	93	87	70	50	52	44
30 - 34	53	73	64	71	58	44	47	46	28
35 - 54	124	164	193	196	190	153	128	116	107
55 - 64	12	14	21	21	26	27	27	31	16
65 and Over	1						1	3	2
Total	448	555	626	629	575	499	478	434	360

Fall to Spring EOPS Persistence Rates by Age Group

Age Group	2001	2002	2003	2004	2005	2006	2007	2008	2009
16 - 18	75	90	75	83	77	80	81	79	79
19 - 24	71	71	77	73	68	68	73	67	76
25 - 29	77	77	73	73	74	69	74	68	71
30 - 34	79	86	74	72	68	70	75	73	62
35 - 54	78	82	81	76	81	77	82	65	75
55 - 64	80	93	91	68	74	73	84	89	67
65 and Over	100						100	100	67
Total	75	79	78	74	74	72	77	70	73

Peralta Community College District



EOPS Headcount at Fall Census by Age Group

Age Group	2001	2002	2003	2004	2005	2006	2007	2008	2009
16 - 18	222	212	181	202	194	191	203	263	136
19 - 24	887	955	983	1,002	870	888	871	908	832
25 - 29	299	331	330	356	342	320	291	331	268
30 - 34	214	234	245	293	267	253	211	241	196
35 - 54	603	628	652	726	712	675	602	659	540
55 - 64	58	60	61	81	86	107	110	125	92
65 and Over	38	34	25	22	24	25	24	23	18
Total	2,321	2,454	2,477	2,682	2,495	2,459	2,312	2,550	2,082

Number of Fall EOPS Students Persisting to Spring Opening Day by Age Group

Age Group	2001	2002	2003	2004	2005	2006	2007	2008	2009
16 - 18	177	179	146	167	155	154	165	190	116
19 - 24	661	720	789	767	635	665	683	656	641
25 - 29	227	262	243	258	248	217	230	215	190
30 - 34	170	192	186	222	199	185	163	169	152
35 - 54	494	503	546	575	564	555	493	491	420
55 - 64	51	53	57	59	66	86	93	97	71
65 and Over	35	31	22	17	22	23	24	21	15
Total	1,815	1,940	1,989	2,065	1,889	1,885	1,851	1,839	1,605

Fall to Spring EOPS Persistence Rates by Age Group

Age Group	2001	2002	2003	2004	2005	2006	2007	2008	2009
16 - 18	80	84	81	83	80	81	81	72	85
19 - 24	75	75	80	77	73	75	78	72	77
25 - 29	76	79	74	72	73	68	79	65	71
30 - 34	79	82	76	76	75	73	77	70	78
35 - 54	82	80	84	79	79	82	82	75	78
55 - 64	88	88	93	73	77	80	85	78	77
65 and Over	92	91	88	77	92	92	100	91	83
Total	78	79	80	77	76	77	80	72	77