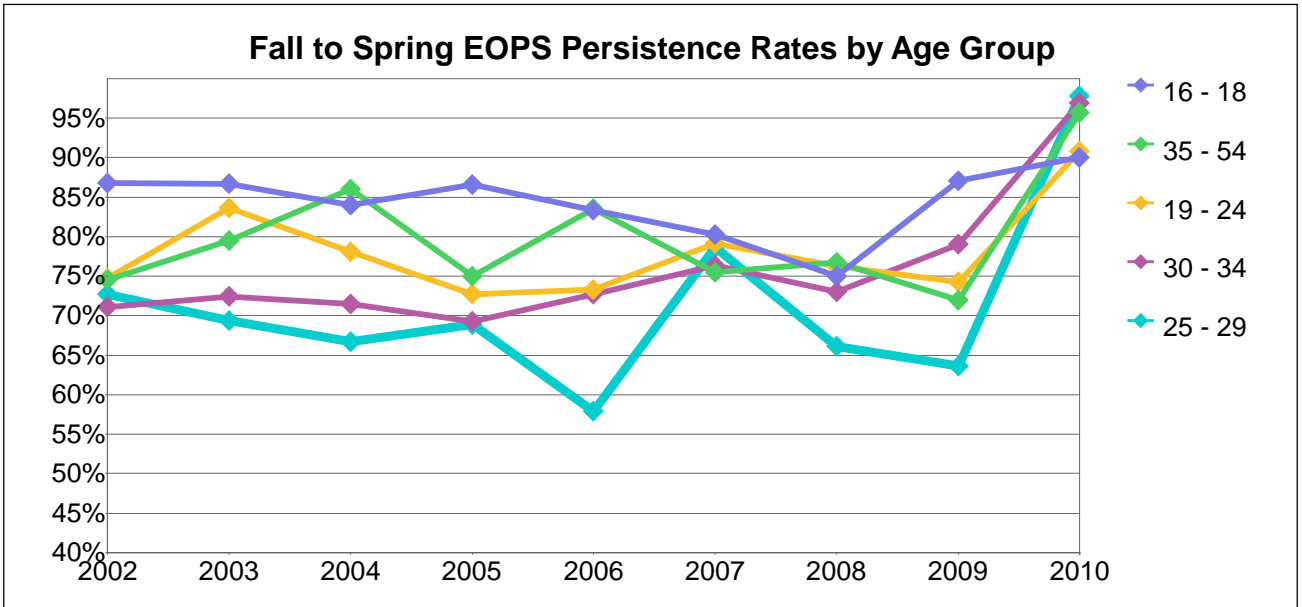


College of Alameda



EOPS Headcount at Fall Census by Age Group

Age Group	2002	2003	2004	2005	2006	2007	2008	2009	2010
16 - 18	91	30	50	67	48	86	84	31	30
19 - 24	340	294	242	205	228	259	206	233	217
25 - 29	55	49	60	61	57	61	65	55	45
30 - 34	38	29	42	39	33	38	37	43	33
35 - 54	102	78	86	96	85	94	73	57	69
55 - 64	10	7	8	6	10	13	16	13	10
65 and Over	4	3	3	3	3	2	3	2	1
Total	640	490	491	477	464	553	484	434	405

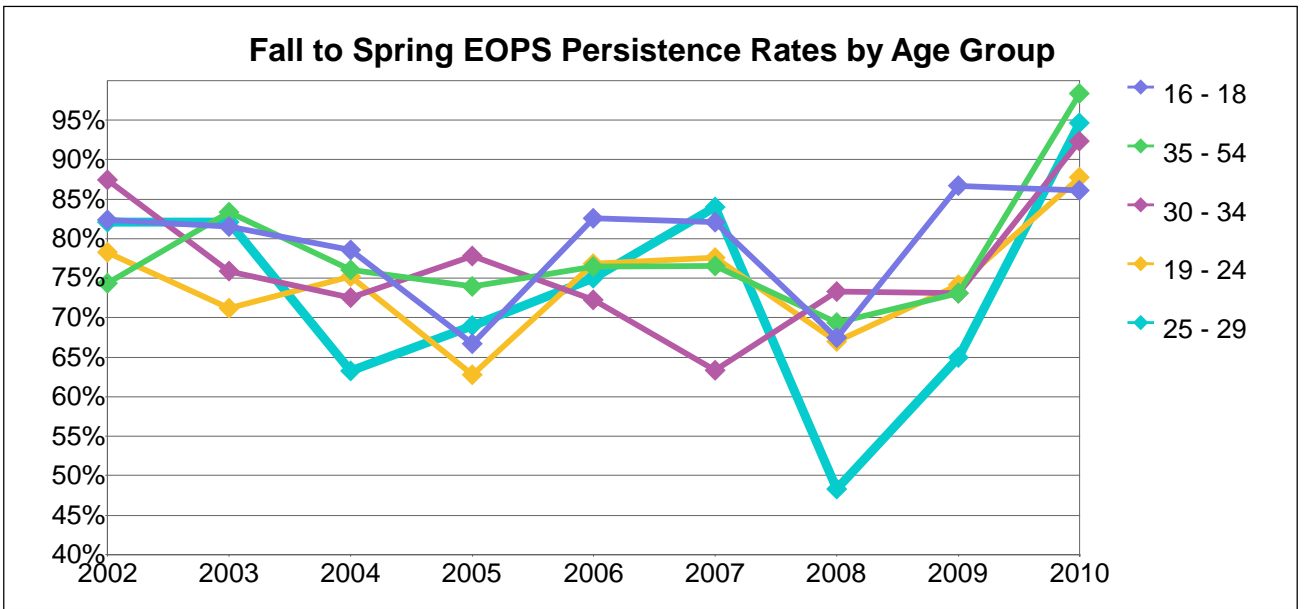
Number of Fall EOPS Students Persisting to Spring Opening Day by Age Group

Age Group	2002	2003	2004	2005	2006	2007	2008	2009	2010
16 - 18	79	26	42	58	40	69	63	27	27
19 - 24	254	246	189	149	167	205	157	173	197
25 - 29	40	34	40	42	33	48	43	35	44
30 - 34	27	21	30	27	24	29	27	34	32
35 - 54	76	62	74	72	71	71	56	41	66
55 - 64	8	6	5	3	8	11	13	13	10
65 and Over	4	3	2	3	3	2	3	2	1
Total	488	398	382	354	346	435	362	325	377

Fall to Spring EOPS Persistence Rates by Age Group

Age Group	2002	2003	2004	2005	2006	2007	2008	2009	2010
16 - 18	87%	87%	84%	87%	83%	80%	75%	87%	90%
19 - 24	75%	84%	78%	73%	73%	79%	76%	74%	91%
25 - 29	73%	69%	67%	69%	58%	79%	66%	64%	98%
30 - 34	71%	72%	71%	69%	73%	76%	73%	79%	97%
35 - 54	75%	79%	86%	75%	84%	76%	77%	72%	96%
55 - 64	80%	86%	63%	50%	80%	85%	81%	100%	100%
65 and Over	100%	100%	67%	100%	100%	100%	100%	100%	100%
Total	76%	81%	78%	74%	75%	79%	75%	75%	93%

Berkeley City College



EOPS Headcount at Fall Census by Age Group

Age Group	2002	2003	2004	2005	2006	2007	2008	2009	2010
16 - 18	34	27	28	33	23	28	40	30	36
19 - 24	124	111	141	137	108	107	118	116	139
25 - 29	56	39	49	58	44	50	60	40	56
30 - 34	24	29	40	36	36	30	30	26	26
35 - 54	74	72	92	100	102	98	98	78	62
55 - 64	6	8	12	15	12	7	11	6	7
65 and Over	1	1	1	1	2	2		1	1
Total	319	287	363	380	327	322	357	297	327

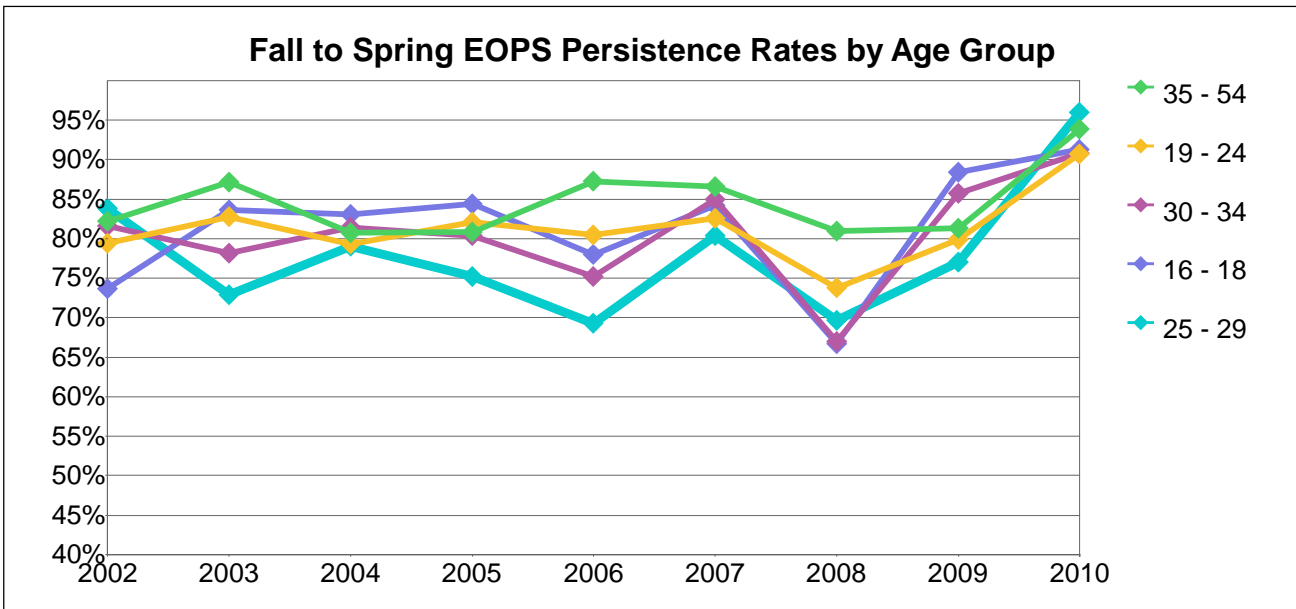
Number of Fall EOPS Students Persisting to Spring Opening Day by Age Group

Age Group	2002	2003	2004	2005	2006	2007	2008	2009	2010
16 - 18	28	22	22	22	19	23	27	26	31
19 - 24	97	79	106	86	83	83	79	86	122
25 - 29	46	32	31	40	33	42	29	26	53
30 - 34	21	22	29	28	26	19	22	19	24
35 - 54	55	60	70	74	78	75	68	57	61
55 - 64	5	8	10	9	8	3	5	3	7
65 and Over	1	1		1	1	2		1	1
Total	253	224	268	260	248	247	230	218	299

Fall to Spring EOPS Persistence Rates by Age Group

Age Group	2002	2003	2004	2005	2006	2007	2008	2009	2010
16 - 18	82%	81%	79%	67%	83%	82%	68%	87%	86%
19 - 24	78%	71%	75%	63%	77%	78%	67%	74%	88%
25 - 29	82%	82%	63%	69%	75%	84%	48%	65%	95%
30 - 34	88%	76%	73%	78%	72%	63%	73%	73%	92%
35 - 54	74%	83%	76%	74%	76%	77%	69%	73%	98%
55 - 64	83%	100%	83%	60%	67%	43%	45%	50%	100%
65 and Over	100%	100%	0%	100%	50%	100%		100%	100%
Total	79%	78%	74%	68%	76%	77%	64%	73%	91%

Laney College



EOPS Headcount at Fall Census by Age Group

Age Group	2002	2003	2004	2005	2006	2007	2008	2009	2010
16 - 18	38	61	71	32	59	19	78	26	23
19 - 24	248	307	338	285	322	275	377	318	227
25 - 29	105	118	119	105	117	112	135	113	99
30 - 34	87	101	113	107	121	80	112	84	76
35 - 54	253	265	291	282	290	253	309	262	211
55 - 64	29	23	30	30	48	58	66	50	36
65 and Over	29	21	18	20	20	19	16	12	10
Total	789	896	980	861	977	816	1,093	865	682

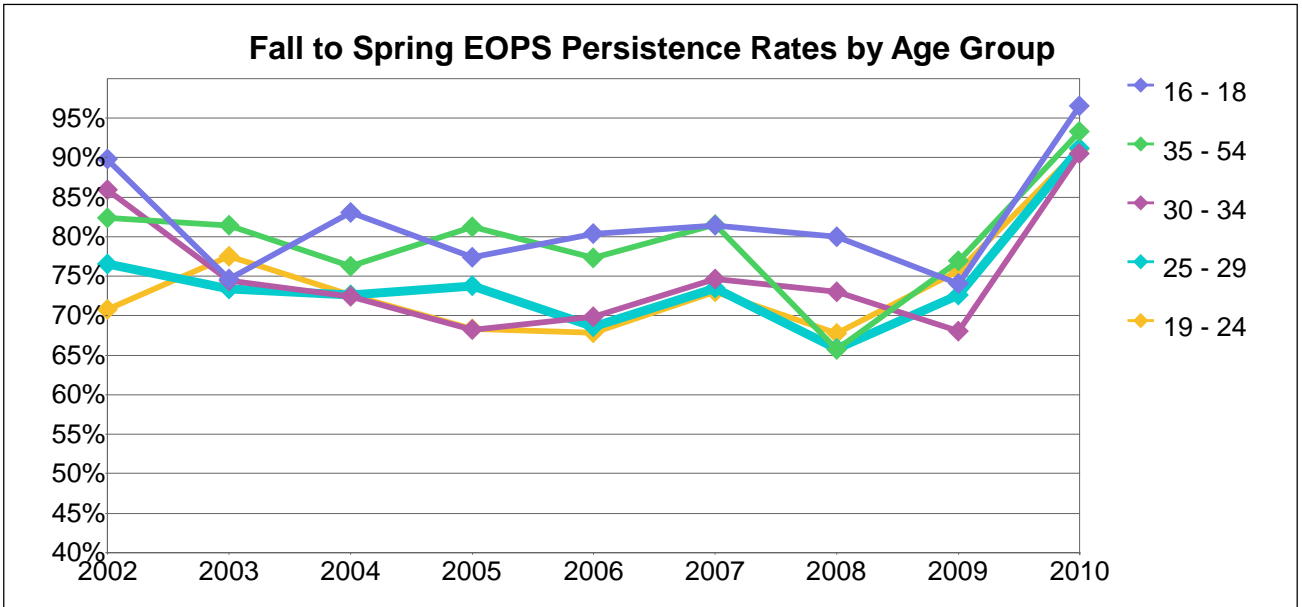
Number of Fall EOPS Students Persisting to Spring Opening Day by Age Group

Age Group	2002	2003	2004	2005	2006	2007	2008	2009	2010
16 - 18	28	51	59	27	46	16	52	23	21
19 - 24	197	254	268	234	259	227	278	254	206
25 - 29	88	86	94	79	81	90	94	87	95
30 - 34	71	79	92	86	91	68	75	72	69
35 - 54	208	231	235	228	253	219	250	213	198
55 - 64	26	22	23	28	43	52	50	39	33
65 and Over	26	18	15	18	19	19	15	10	10
Total	644	741	786	700	792	691	814	698	632

Fall to Spring EOPS Persistence Rates by Age Group

Age Group	2002	2003	2004	2005	2006	2007	2008	2009	2010
16 - 18	74%	84%	83%	84%	78%	84%	67%	88%	91%
19 - 24	79%	83%	79%	82%	80%	83%	74%	80%	91%
25 - 29	84%	73%	79%	75%	69%	80%	70%	77%	96%
30 - 34	82%	78%	81%	80%	75%	85%	67%	86%	91%
35 - 54	82%	87%	81%	81%	87%	87%	81%	81%	94%
55 - 64	90%	96%	77%	93%	90%	90%	76%	78%	92%
65 and Over	90%	86%	83%	90%	95%	100%	94%	83%	100%
Total	82%	83%	80%	81%	81%	85%	74%	81%	93%

Merritt College



EOPS Headcount at Fall Census by Age Group

Age Group	2002	2003	2004	2005	2006	2007	2008	2009	2010
16 - 18	49	63	53	62	61	70	45	27	29
19 - 24	243	271	281	243	230	230	220	189	157
25 - 29	115	124	128	118	102	68	79	62	57
30 - 34	85	86	98	85	63	63	63	50	53
35 - 54	199	237	257	234	198	157	181	169	179
55 - 64	15	23	31	35	37	32	35	31	29
65 and Over						1	3	3	1
Total	706	804	848	777	691	621	626	531	505

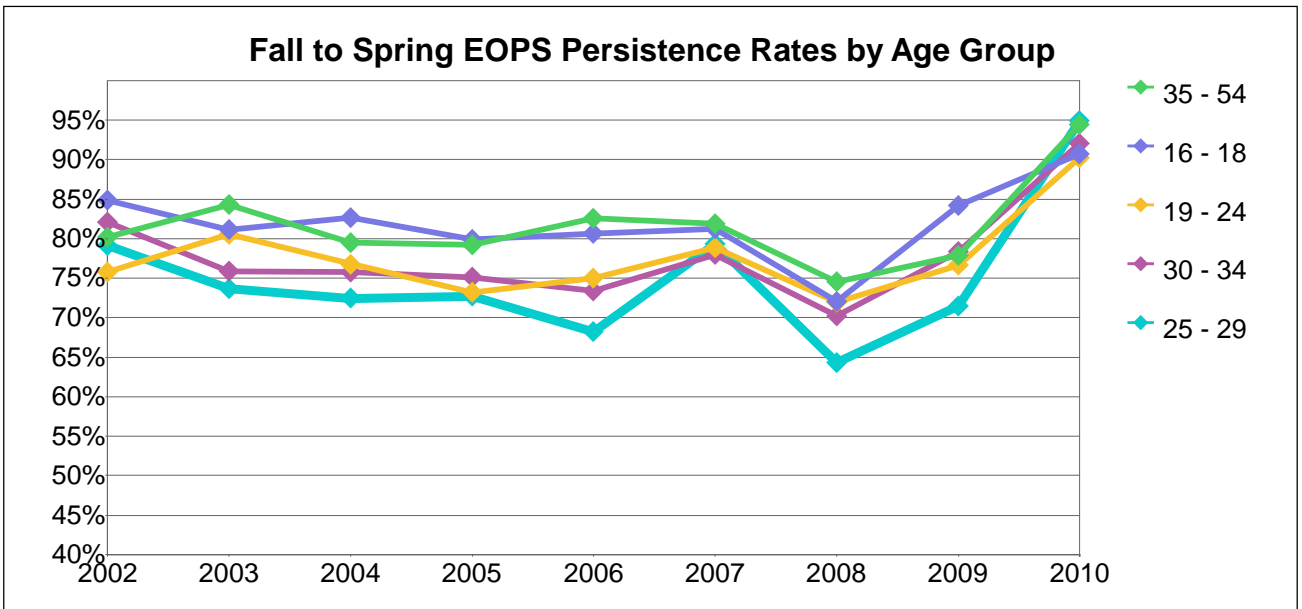
Number of Fall EOPS Students Persisting to Spring Opening Day by Age Group

Age Group	2002	2003	2004	2005	2006	2007	2008	2009	2010
16 - 18	44	47	44	48	49	57	36	20	28
19 - 24	172	210	204	166	156	168	149	143	143
25 - 29	88	91	93	87	70	50	52	45	52
30 - 34	73	64	71	58	44	47	46	34	48
35 - 54	164	193	196	190	153	128	119	130	167
55 - 64	14	21	21	26	27	27	31	20	29
65 and Over						1	3	2	1
Total	555	626	629	575	499	478	436	394	468

Fall to Spring EOPS Persistence Rates by Age Group

Age Group	2002	2003	2004	2005	2006	2007	2008	2009	2010
16 - 18	90%	75%	83%	77%	80%	81%	80%	74%	97%
19 - 24	71%	77%	73%	68%	68%	73%	68%	76%	91%
25 - 29	77%	73%	73%	74%	69%	74%	66%	73%	91%
30 - 34	86%	74%	72%	68%	70%	75%	73%	68%	91%
35 - 54	82%	81%	76%	81%	77%	82%	66%	77%	93%
55 - 64	93%	91%	68%	74%	73%	84%	89%	65%	100%
65 and Over						100%	100%	67%	100%
Total	79%	78%	74%	74%	72%	77%	70%	74%	93%

Peralta Community College District



EOPS Headcount at Fall Census by Age Group

Age Group	2002	2003	2004	2005	2006	2007	2008	2009	2010
16 - 18	212	181	202	194	191	203	247	114	118
19 - 24	955	983	1,002	870	888	871	921	856	740
25 - 29	331	330	356	342	320	291	339	270	257
30 - 34	234	245	293	267	253	211	242	203	188
35 - 54	628	652	726	712	675	602	661	566	521
55 - 64	60	61	81	86	107	110	128	100	82
65 and Over	34	25	22	24	25	24	22	18	13
Total	2,454	2,477	2,682	2,495	2,459	2,312	2,560	2,127	1,919

Number of Fall EOPS Students Persisting to Spring Opening Day by Age Group

Age Group	2002	2003	2004	2005	2006	2007	2008	2009	2010
16 - 18	179	146	167	155	154	165	178	96	107
19 - 24	720	789	767	635	665	683	663	656	668
25 - 29	262	243	258	248	217	230	218	193	244
30 - 34	192	186	222	199	185	163	170	159	173
35 - 54	503	546	575	564	555	493	493	441	492
55 - 64	53	57	59	66	86	93	99	75	79
65 and Over	31	22	17	22	23	24	21	15	13
Total	1,940	1,989	2,065	1,889	1,885	1,851	1,842	1,635	1,776

Fall to Spring EOPS Persistence Rates by Age Group

Age Group	2002	2003	2004	2005	2006	2007	2008	2009	2010
16 - 18	84%	81%	83%	80%	81%	81%	72%	84%	91%
19 - 24	75%	80%	77%	73%	75%	78%	72%	77%	90%
25 - 29	79%	74%	72%	73%	68%	79%	64%	71%	95%
30 - 34	82%	76%	76%	75%	73%	77%	70%	78%	92%
35 - 54	80%	84%	79%	79%	82%	82%	75%	78%	94%
55 - 64	88%	93%	73%	77%	80%	85%	77%	75%	96%
65 and Over	91%	88%	77%	92%	92%	100%	95%	83%	100%
Total	79%	80%	77%	76%	77%	80%	72%	77%	93%