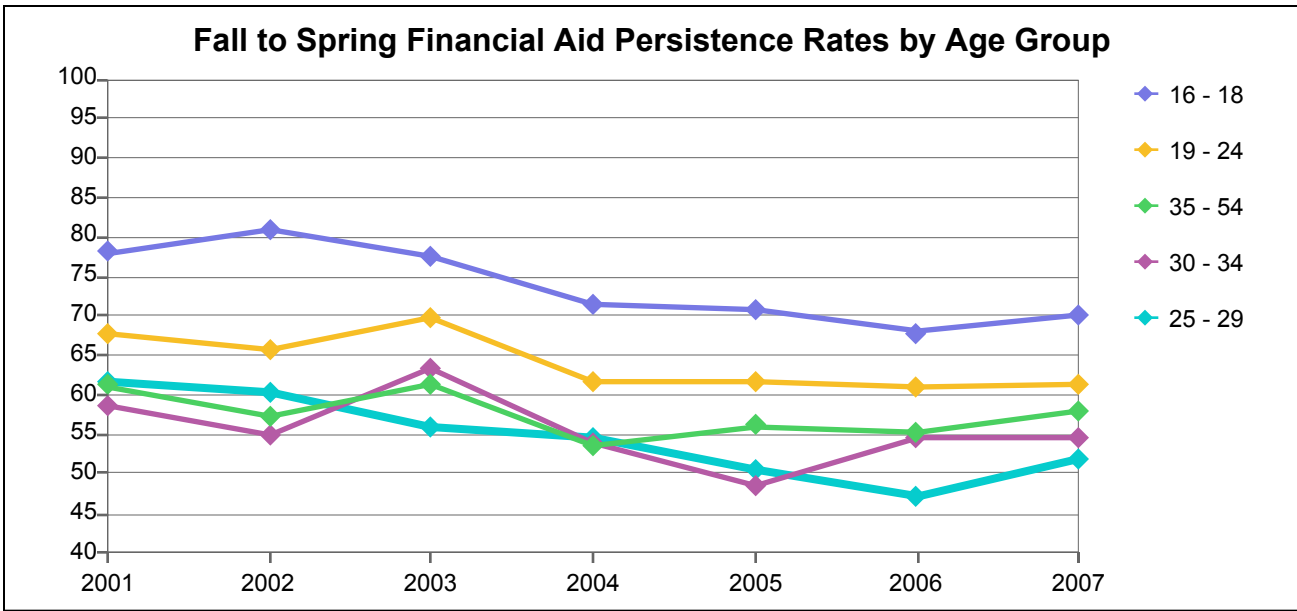


**College of Alameda**



**Financial Aid Headcount at Fall Census by Age Group**

Age Group	2001	2002	2003	2004	2005	2006	2007
16 - 18	241	253	286	361	332	327	307
19 - 24	930	1,066	1,241	1,302	1,255	1,265	1,217
25 - 29	234	274	304	336	419	415	395
30 - 34	150	171	207	222	225	239	211
35 - 54	358	388	441	481	499	482	427
55 - 64	32	50	41	48	60	69	58
65 and Over	14	16	19	19	38	29	20
<b>Total</b>	<b>1,959</b>	<b>2,218</b>	<b>2,539</b>	<b>2,769</b>	<b>2,828</b>	<b>2,826</b>	<b>2,635</b>

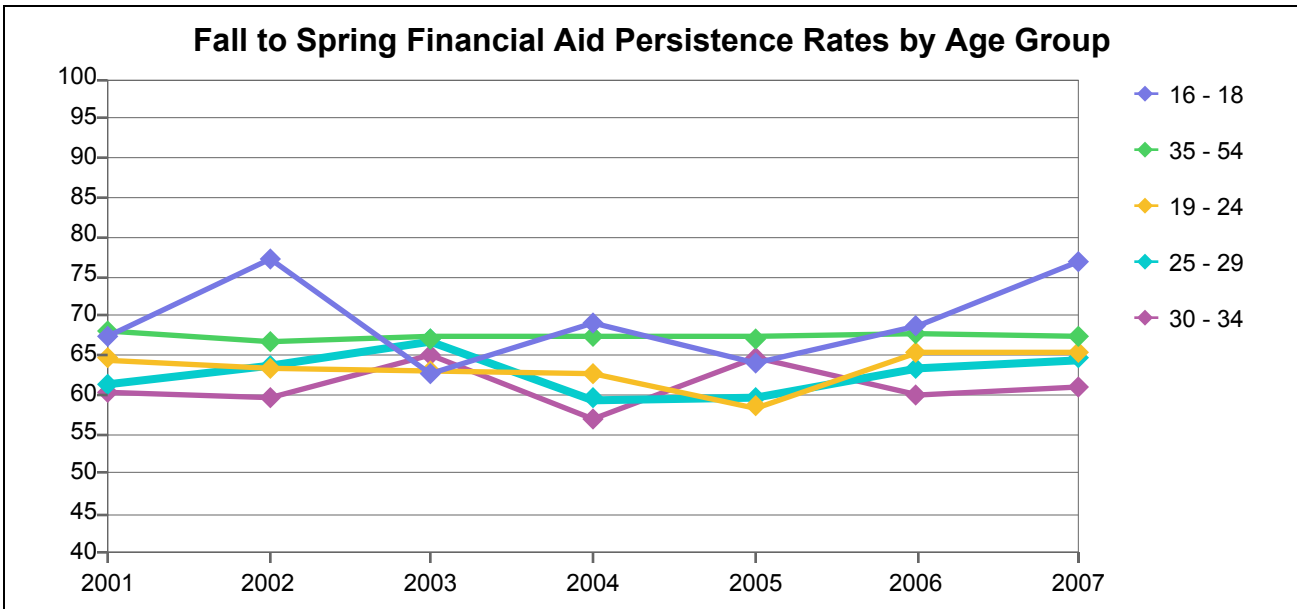
**Number of Fall Financial Aid Students Persisting to Spring Opening Day by Age Group**

Age Group	2001	2002	2003	2004	2005	2006	2007
16 - 18	188	205	222	258	235	222	215
19 - 24	630	701	864	804	773	770	747
25 - 29	144	165	170	183	212	196	205
30 - 34	88	94	131	120	109	130	115
35 - 54	219	222	271	258	280	267	247
55 - 64	23	31	31	23	31	42	34
65 and Over	7	12	11	7	34	20	12
<b>Total</b>	<b>1,299</b>	<b>1,430</b>	<b>1,700</b>	<b>1,653</b>	<b>1,674</b>	<b>1,647</b>	<b>1,575</b>

**Fall to Spring Financial Aid Persistence Rates by Age Group**

Age Group	2001	2002	2003	2004	2005	2006	2007
16 - 18	78	81	78	71	71	68	70
19 - 24	68	66	70	62	62	61	61
25 - 29	62	60	56	54	51	47	52
30 - 34	59	55	63	54	48	54	55
35 - 54	61	57	61	54	56	55	58
55 - 64	72	62	76	48	52	61	59
65 and Over	50	75	58	37	89	69	60
<b>Total</b>	<b>66</b>	<b>64</b>	<b>67</b>	<b>60</b>	<b>59</b>	<b>58</b>	<b>60</b>

**Berkeley City College**



**Financial Aid Headcount at Fall Census by Age Group**

Age Group	2001	2002	2003	2004	2005	2006	2007
16 - 18	86	101	94	91	120	112	159
19 - 24	434	493	517	561	648	628	705
25 - 29	210	295	266	308	340	352	355
30 - 34	143	149	143	165	193	207	185
35 - 54	319	334	351	390	458	468	453
55 - 64	35	44	52	77	85	102	89
65 and Over	21	18	22	14	20	34	33
<b>Total</b>	<b>1,248</b>	<b>1,434</b>	<b>1,445</b>	<b>1,606</b>	<b>1,864</b>	<b>1,903</b>	<b>1,979</b>

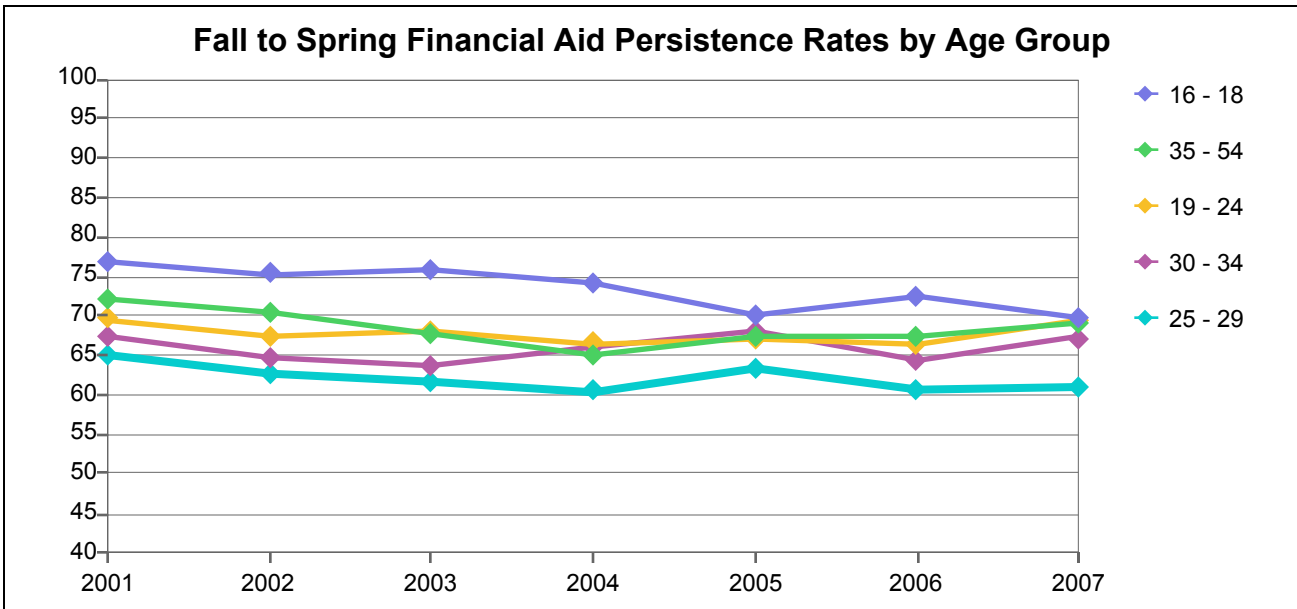
**Number of Fall Financial Aid Students Persisting to Spring Opening Day by Age Group**

Age Group	2001	2002	2003	2004	2005	2006	2007
16 - 18	58	78	59	63	77	77	122
19 - 24	280	313	326	352	379	411	461
25 - 29	129	188	178	183	203	223	229
30 - 34	86	89	93	94	125	124	113
35 - 54	217	223	236	263	308	317	305
55 - 64	23	29	42	53	64	65	51
65 and Over	16	14	14	10	14	20	14
<b>Total</b>	<b>809</b>	<b>934</b>	<b>948</b>	<b>1,018</b>	<b>1,170</b>	<b>1,237</b>	<b>1,295</b>

**Fall to Spring Financial Aid Persistence Rates by Age Group**

Age Group	2001	2002	2003	2004	2005	2006	2007
16 - 18	67	77	63	69	64	69	77
19 - 24	65	63	63	63	58	65	65
25 - 29	61	64	67	59	60	63	65
30 - 34	60	60	65	57	65	60	61
35 - 54	68	67	67	67	67	68	67
55 - 64	66	66	81	69	75	64	57
65 and Over	76	78	64	71	70	59	42
<b>Total</b>	<b>65</b>	<b>65</b>	<b>66</b>	<b>63</b>	<b>63</b>	<b>65</b>	<b>65</b>

## Laney College



**Financial Aid Headcount at Fall Census by Age Group**

Age Group	2001	2002	2003	2004	2005	2006	2007
16 - 18	343	397	456	483	462	470	423
19 - 24	1,558	1,832	2,106	2,164	2,165	2,069	1,985
25 - 29	561	674	809	861	858	898	796
30 - 34	368	460	547	616	557	576	470
35 - 54	913	975	1,127	1,200	1,161	1,146	1,043
55 - 64	98	106	105	134	154	178	179
65 and Over	72	77	74	65	77	78	71
<b>Total</b>	<b>3,913</b>	<b>4,521</b>	<b>5,224</b>	<b>5,523</b>	<b>5,434</b>	<b>5,415</b>	<b>4,967</b>

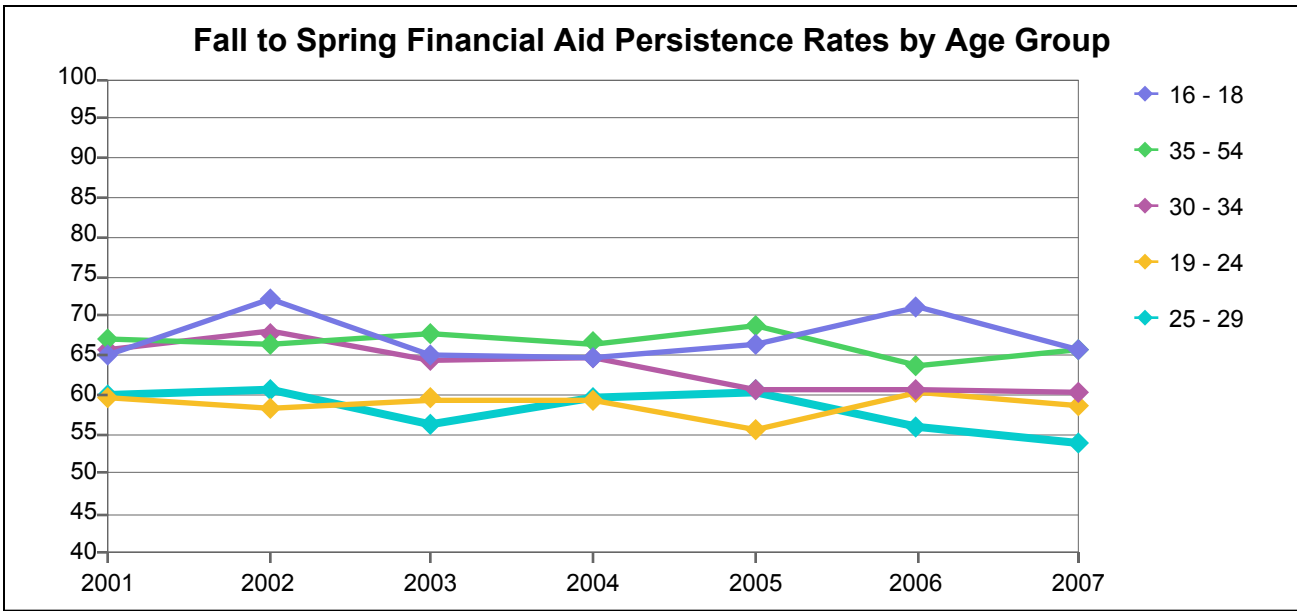
**Number of Fall Financial Aid Students Persisting to Spring Opening Day by Age Group**

Age Group	2001	2002	2003	2004	2005	2006	2007
16 - 18	264	299	346	359	324	340	295
19 - 24	1,084	1,234	1,433	1,440	1,452	1,374	1,379
25 - 29	365	422	500	521	543	544	484
30 - 34	248	297	349	407	379	371	316
35 - 54	659	688	763	780	784	773	722
55 - 64	72	72	71	95	111	118	127
65 and Over	59	57	54	52	60	61	48
<b>Total</b>	<b>2,751</b>	<b>3,069</b>	<b>3,516</b>	<b>3,654</b>	<b>3,653</b>	<b>3,581</b>	<b>3,371</b>

**Fall to Spring Financial Aid Persistence Rates by Age Group**

Age Group	2001	2002	2003	2004	2005	2006	2007
16 - 18	77	75	76	74	70	72	70
19 - 24	70	67	68	67	67	66	69
25 - 29	65	63	62	61	63	61	61
30 - 34	67	65	64	66	68	64	67
35 - 54	72	71	68	65	68	67	69
55 - 64	73	68	68	71	72	66	71
65 and Over	82	74	73	80	78	78	68
<b>Total</b>	<b>70</b>	<b>68</b>	<b>67</b>	<b>66</b>	<b>67</b>	<b>66</b>	<b>68</b>

## Merritt College



**Financial Aid Headcount at Fall Census by Age Group**

Age Group	2001	2002	2003	2004	2005	2006	2007
16 - 18	126	180	214	204	246	218	207
19 - 24	601	722	954	917	1,027	958	891
25 - 29	334	389	466	497	544	527	398
30 - 34	221	268	349	392	391	336	273
35 - 54	569	728	830	810	894	830	643
55 - 64	49	67	72	89	108	115	105
65 and Over	12	6	18	13	11	16	13
<b>Total</b>	<b>1,912</b>	<b>2,360</b>	<b>2,903</b>	<b>2,922</b>	<b>3,221</b>	<b>3,000</b>	<b>2,530</b>

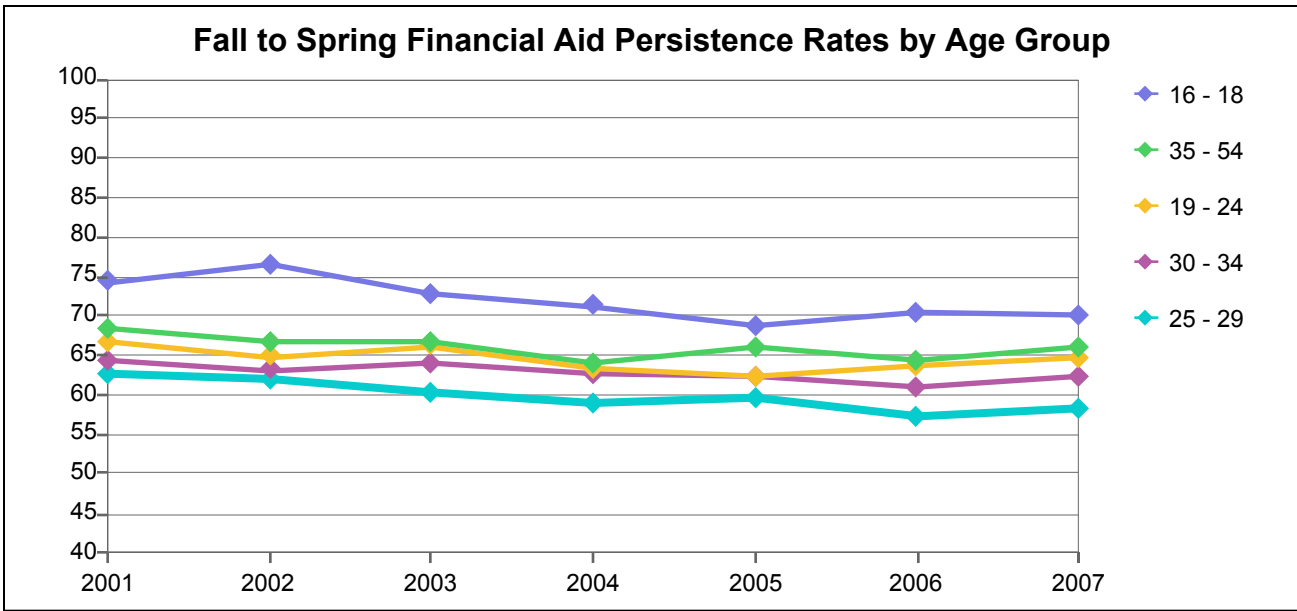
**Number of Fall Financial Aid Students Persisting to Spring Opening Day by Age Group**

Age Group	2001	2002	2003	2004	2005	2006	2007
16 - 18	82	130	139	132	163	155	136
19 - 24	359	421	567	543	572	577	522
25 - 29	200	236	263	296	329	294	215
30 - 34	145	182	225	253	237	204	165
35 - 54	382	484	562	539	614	528	423
55 - 64	33	46	51	52	63	69	75
65 and Over	7	6	8	6	7	11	7
<b>Total</b>	<b>1,208</b>	<b>1,505</b>	<b>1,815</b>	<b>1,821</b>	<b>1,985</b>	<b>1,838</b>	<b>1,543</b>

**Fall to Spring Financial Aid Persistence Rates by Age Group**

Age Group	2001	2002	2003	2004	2005	2006	2007
16 - 18	65	72	65	65	66	71	66
19 - 24	60	58	59	59	56	60	59
25 - 29	60	61	56	60	60	56	54
30 - 34	66	68	64	65	61	61	60
35 - 54	67	66	68	67	69	64	66
55 - 64	67	69	71	58	58	60	71
65 and Over	58	100	44	46	64	69	54
<b>Total</b>	<b>63</b>	<b>64</b>	<b>63</b>	<b>62</b>	<b>62</b>	<b>61</b>	<b>61</b>

**Peralta Community College District**



**Financial Aid Headcount at Fall Census by Age Group**

Age Group	2001	2002	2003	2004	2005	2006	2007
16 - 18	796	931	1,050	1,139	1,160	1,127	1,096
19 - 24	3,523	4,113	4,818	4,944	5,095	4,920	4,798
25 - 29	1,339	1,632	1,845	2,002	2,161	2,192	1,944
30 - 34	882	1,048	1,246	1,395	1,366	1,358	1,139
35 - 54	2,159	2,425	2,749	2,881	3,012	2,926	2,566
55 - 64	214	267	270	348	407	464	431
65 and Over	119	117	133	111	146	157	137
<b>Total</b>	<b>9,032</b>	<b>10,533</b>	<b>12,111</b>	<b>12,820</b>	<b>13,347</b>	<b>13,144</b>	<b>12,111</b>

**Number of Fall Financial Aid Students Persisting to Spring Opening Day by Age Group**

Age Group	2001	2002	2003	2004	2005	2006	2007
16 - 18	592	712	766	812	799	794	768
19 - 24	2,353	2,669	3,190	3,139	3,176	3,132	3,109
25 - 29	838	1,011	1,111	1,183	1,287	1,257	1,133
30 - 34	567	662	798	874	850	829	709
35 - 54	1,477	1,617	1,832	1,840	1,986	1,885	1,697
55 - 64	151	178	195	223	269	294	287
65 and Over	89	89	87	75	115	112	81
<b>Total</b>	<b>6,067</b>	<b>6,938</b>	<b>7,979</b>	<b>8,146</b>	<b>8,482</b>	<b>8,303</b>	<b>7,784</b>

**Fall to Spring Financial Aid Persistence Rates by Age Group**

Age Group	2001	2002	2003	2004	2005	2006	2007
16 - 18	74	76	73	71	69	70	70
19 - 24	67	65	66	63	62	64	65
25 - 29	63	62	60	59	60	57	58
30 - 34	64	63	64	63	62	61	62
35 - 54	68	67	67	64	66	64	66
55 - 64	71	67	72	64	66	63	67
65 and Over	75	76	65	68	79	71	59
<b>Total</b>	<b>67</b>	<b>66</b>	<b>66</b>	<b>64</b>	<b>64</b>	<b>63</b>	<b>64</b>