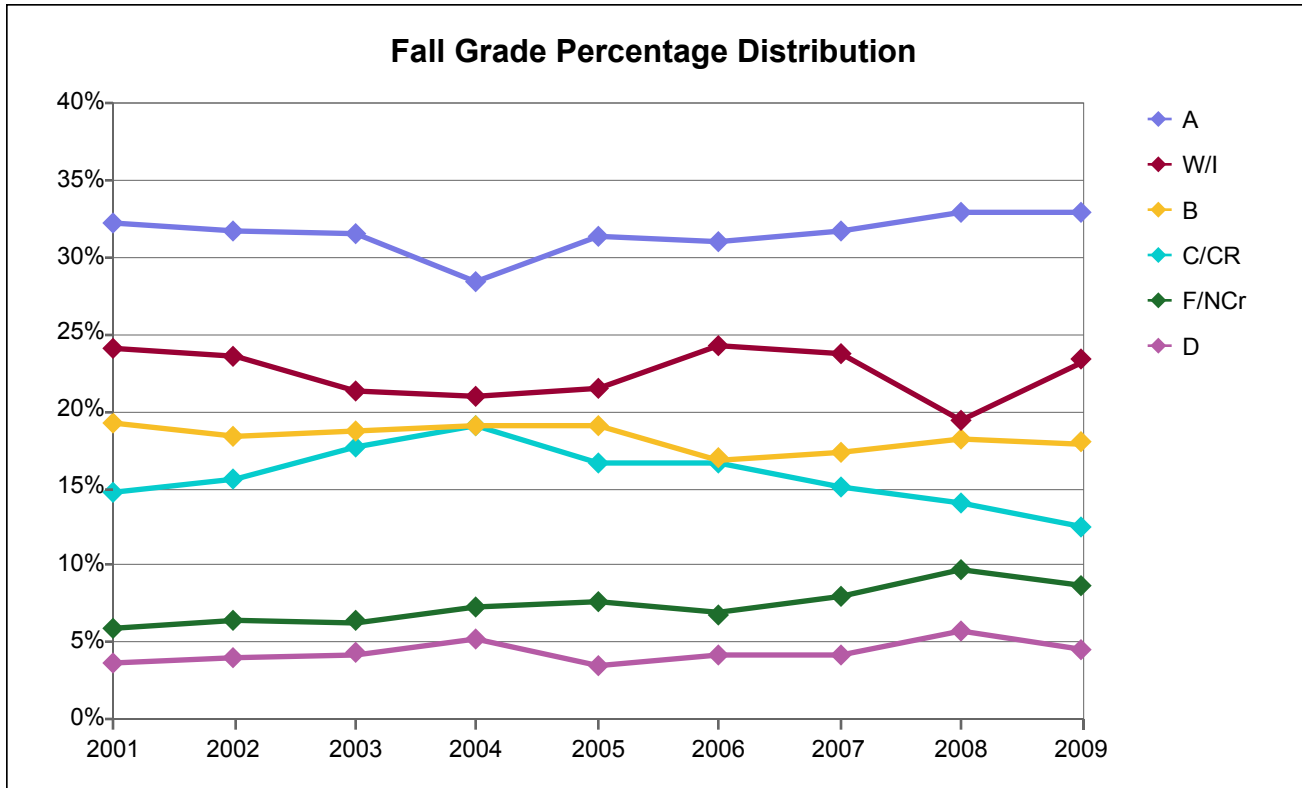


College of Alameda



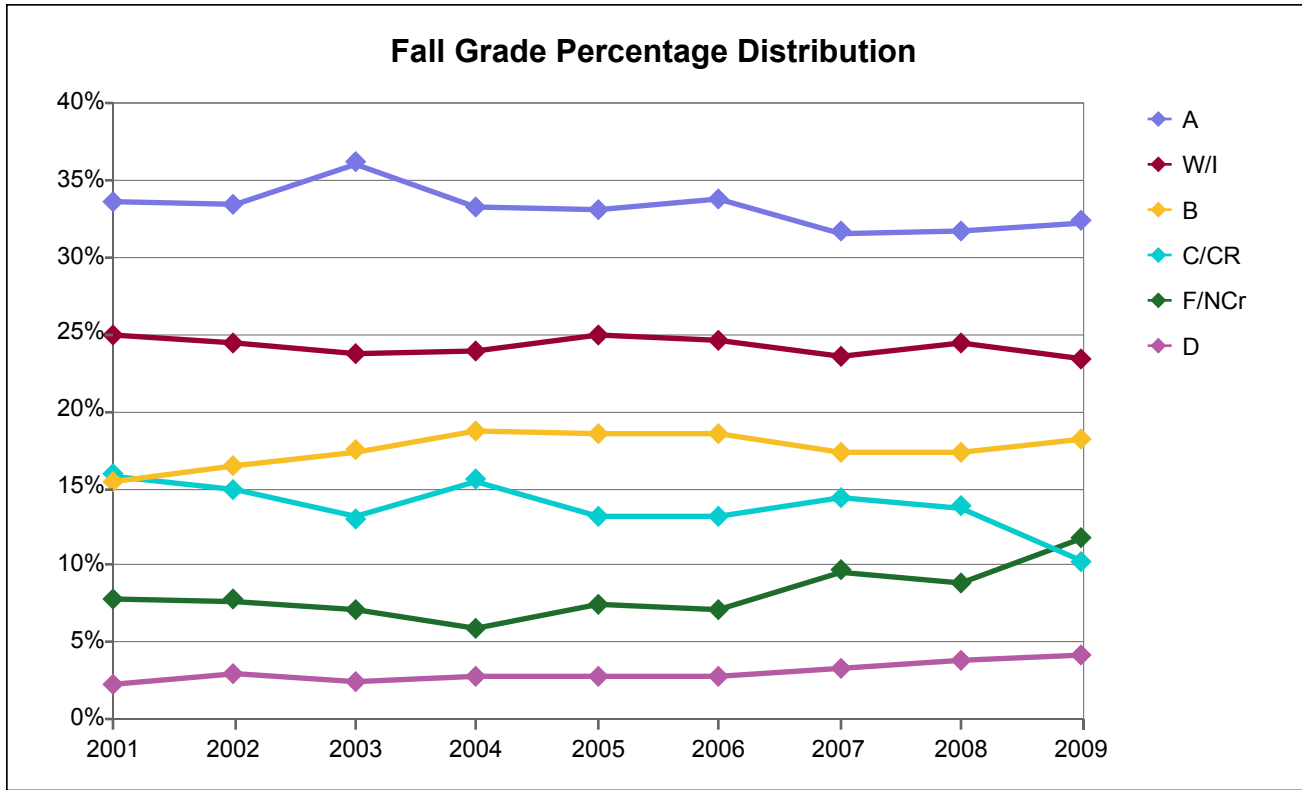
Fall Grade Frequency Distribution

Grade	2001	2002	2003	2004	2005	2006	2007	2008	2009
A	3,751	3,974	3,779	3,190	3,642	3,867	4,086	4,294	5,195
B	2,242	2,306	2,248	2,141	2,211	2,107	2,241	2,368	2,830
C	1,328	1,510	1,597	1,525	1,487	1,500	1,542	1,822	1,980
CR	388	446	525	606	449	586	404	14	
D	415	496	512	573	410	520	534	740	717
F	311	424	424	522	518	581	638	1,187	1,298
I	128	131	113	118	102	124	202	194	559
NCr	382	383	333	290	363	273	398	87	75
W	2,672	2,823	2,431	2,224	2,392	2,901	2,857	2,336	3,124
Total	11,617	12,493	11,962	11,189	11,574	12,459	12,902	13,042	15,778

Fall Grade Percentage Distribution

Grade	2001	2002	2003	2004	2005	2006	2007	2008	2009
A	32%	32%	32%	29%	31%	31%	32%	33%	33%
B	19%	18%	19%	19%	19%	17%	17%	18%	18%
C	11%	12%	13%	14%	13%	12%	12%	14%	13%
CR	3%	4%	4%	5%	4%	5%	3%	0%	
D	4%	4%	4%	5%	4%	4%	4%	6%	5%
F	3%	3%	4%	5%	4%	5%	5%	9%	8%
I	1%	1%	1%	1%	1%	1%	2%	1%	4%
NCr	3%	3%	3%	3%	3%	2%	3%	1%	0%
W	23%	23%	20%	20%	21%	23%	22%	18%	20%
% of Column	100%	100%	100%	100%	100%	100%	100%	100%	100%

Berkeley City College



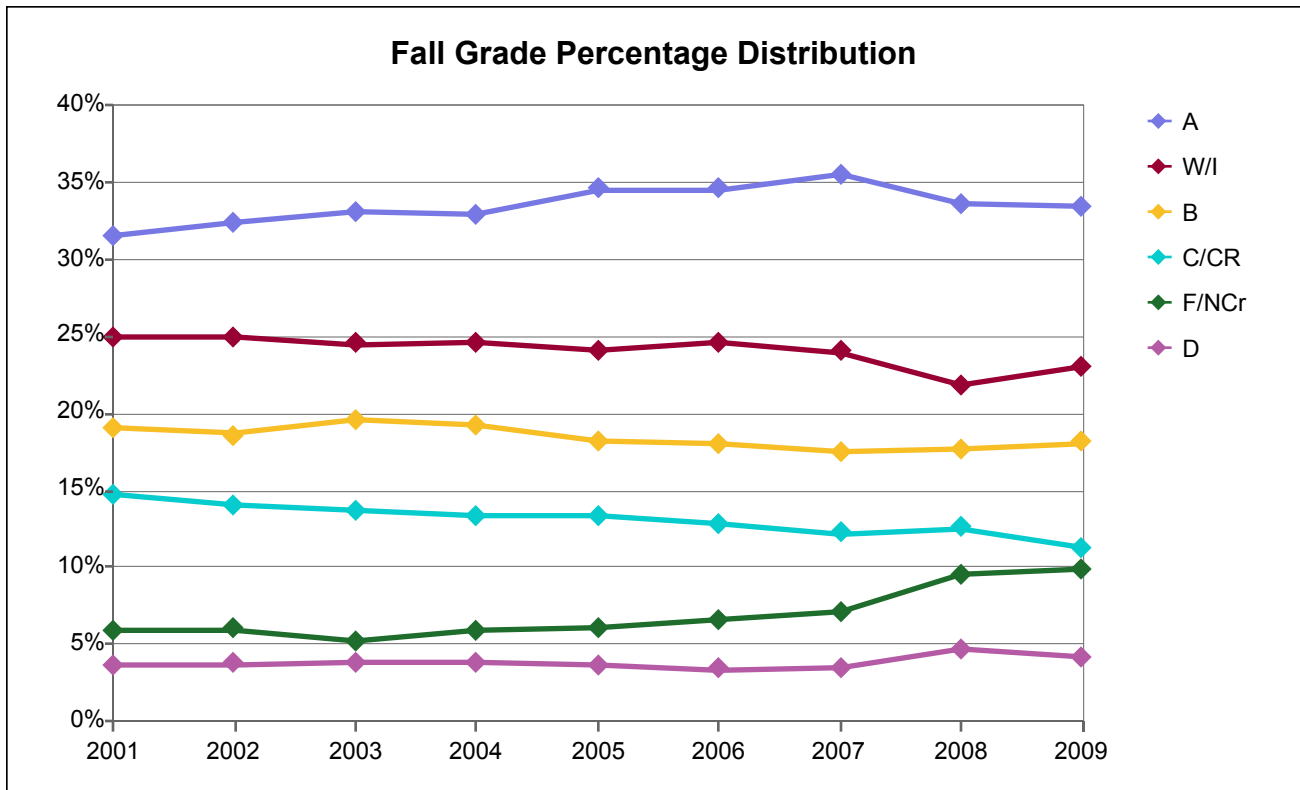
Fall Grade Frequency Distribution

Grade	2001	2002	2003	2004	2005	2006	2007	2008	2009
A	3,016	3,305	3,035	2,855	2,763	3,282	3,723	4,236	4,991
B	1,392	1,625	1,465	1,603	1,551	1,796	2,046	2,320	2,812
C	757	887	712	761	742	911	1,103	1,813	1,576
CR	668	584	387	570	360	371	598	33	
D	203	290	201	233	227	267	389	513	631
F	452	482	323	313	395	463	814	1,076	1,646
I	92	130	102	75	81	97	118	157	641
NCr	244	278	273	191	232	222	317	113	172
W	2,152	2,283	1,894	1,972	2,006	2,296	2,654	3,115	2,967
Total	8,976	9,864	8,392	8,573	8,357	9,705	11,762	13,376	15,436

Fall Grade Percentage Distribution

Grade	2001	2002	2003	2004	2005	2006	2007	2008	2009
A	34%	34%	36%	33%	33%	34%	32%	32%	32%
B	16%	16%	17%	19%	19%	19%	17%	17%	18%
C	8%	9%	8%	9%	9%	9%	9%	14%	10%
CR	7%	6%	5%	7%	4%	4%	5%	0%	
D	2%	3%	2%	3%	3%	3%	3%	4%	4%
F	5%	5%	4%	4%	5%	5%	7%	8%	11%
I	1%	1%	1%	1%	1%	1%	1%	1%	4%
NCr	3%	3%	3%	2%	3%	2%	3%	1%	1%
W	24%	23%	23%	23%	24%	24%	23%	23%	19%
% of Column	100%	100%	100%	100%	100%	100%	100%	100%	100%

Laney College



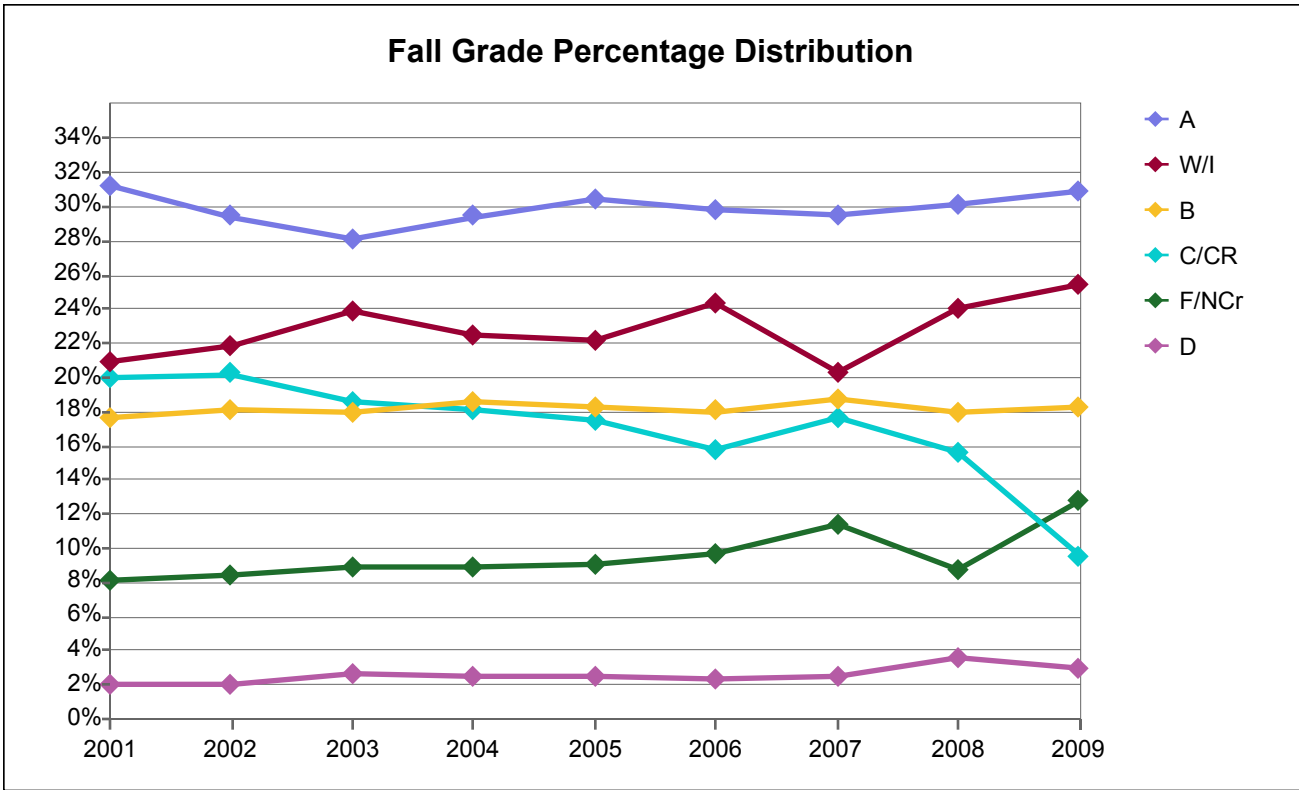
Fall Grade Frequency Distribution

Grade	2001	2002	2003	2004	2005	2006	2007	2008	2009
A	8,434	9,342	9,156	8,587	8,520	9,148	9,763	9,422	11,394
B	5,085	5,371	5,444	5,013	4,493	4,781	4,788	4,941	6,184
C	3,309	3,616	3,471	3,274	3,003	2,926	2,908	3,477	3,866
CR	621	450	308	233	280	459	445	43	2
D	979	1,073	1,064	1,005	906	896	951	1,321	1,414
F	1,103	1,201	1,218	1,277	1,240	1,268	1,304	2,535	2,969
I	272	223	265	253	228	201	266	401	1,067
NCr	491	523	244	261	243	458	659	130	413
W	6,400	6,985	6,529	6,186	5,715	6,307	6,324	5,694	6,812
Total	26,694	28,784	27,699	26,089	24,628	26,444	27,408	27,964	34,121

Fall Grade Percentage Distribution

Grade	2001	2002	2003	2004	2005	2006	2007	2008	2009
A	32%	32%	33%	33%	35%	35%	36%	34%	33%
B	19%	19%	20%	19%	18%	18%	17%	18%	18%
C	12%	13%	13%	13%	12%	11%	11%	12%	11%
CR	2%	2%	1%	1%	1%	2%	2%	0%	0%
D	4%	4%	4%	4%	4%	3%	3%	5%	4%
F	4%	4%	4%	5%	5%	5%	5%	9%	9%
I	1%	1%	1%	1%	1%	1%	1%	1%	3%
NCr	2%	2%	1%	1%	1%	2%	2%	0%	1%
W	24%	24%	24%	24%	23%	24%	23%	20%	20%
Total	100%	100%	100%	100%	100%	100%	100%	100%	100%

Merritt College



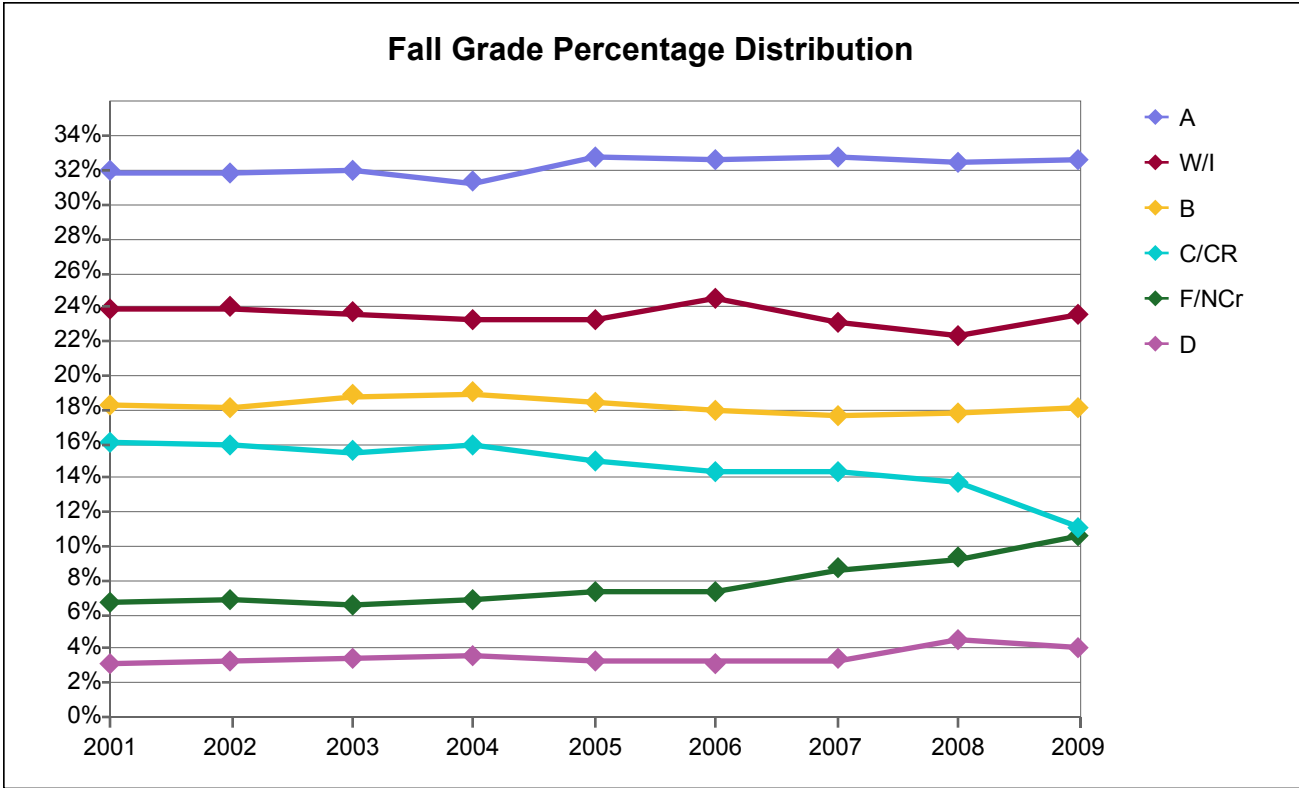
Fall Grade Frequency Distribution

Grade	2001	2002	2003	2004	2005	2006	2007	2008	2009
A	4,179	4,351	4,374	4,266	4,313	4,431	4,193	4,345	4,573
B	2,370	2,677	2,809	2,701	2,590	2,683	2,667	2,581	2,706
C	1,461	1,692	1,684	1,635	1,567	1,514	1,520	2,202	1,412
CR	1,204	1,298	1,201	989	910	829	984	35	1
D	262	299	405	364	347	353	349	513	447
F	267	410	434	417	388	511	625	954	1,492
I	268	262	301	257	222	252	257	533	1,117
NCr	825	839	944	874	900	920	996	308	397
W	2,538	2,968	3,424	3,004	2,928	3,373	2,644	2,919	2,646
Total	13,374	14,796	15,576	14,507	14,165	14,866	14,235	14,390	14,791

Fall Grade Percentage Distribution

Grade	2001	2002	2003	2004	2005	2006	2007	2008	2009
A	31%	29%	28%	29%	30%	30%	29%	30%	31%
B	18%	18%	18%	19%	18%	18%	19%	18%	18%
C	11%	11%	11%	11%	11%	10%	11%	15%	10%
CR	9%	9%	8%	7%	6%	6%	7%	0%	0%
D	2%	2%	3%	3%	2%	2%	2%	4%	3%
F	2%	3%	3%	3%	3%	3%	4%	7%	10%
I	2%	2%	2%	2%	2%	2%	2%	4%	8%
NCr	6%	6%	6%	6%	6%	6%	7%	2%	3%
W	19%	20%	22%	21%	21%	23%	19%	20%	18%
% of Column	100%	100%	100%	100%	100%	100%	100%	100%	100%

Peralta Community College District



Fall Grade Frequency Distribution

Grade	2001	2002	2003	2004	2005	2006	2007	2008	2009
A	19,380	20,972	20,344	18,898	19,238	20,728	21,765	22,297	26,153
B	11,089	11,979	11,966	11,458	10,845	11,367	11,742	12,210	14,532
C	6,855	7,705	7,464	7,195	6,799	6,851	7,073	9,314	8,834
CR	2,881	2,778	2,421	2,398	1,999	2,245	2,431	125	3
D	1,859	2,158	2,182	2,175	1,890	2,036	2,223	3,087	3,209
F	2,133	2,517	2,399	2,529	2,541	2,823	3,381	5,752	7,405
I	760	746	781	703	633	674	843	1,285	3,384
NCr	1,942	2,023	1,794	1,616	1,738	1,873	2,370	638	1,057
W	13,762	15,059	14,278	13,386	13,041	14,877	14,479	14,064	15,549
Total	60,661	65,937	63,629	60,358	58,724	63,474	66,307	68,772	80,126

Fall Grade Percentage Distribution

Grade	2001	2002	2003	2004	2005	2006	2007	2008	2009
A	32%	32%	32%	31%	33%	33%	33%	32%	33%
B	18%	18%	19%	19%	18%	18%	18%	18%	18%
C	11%	12%	12%	12%	12%	11%	11%	14%	11%
CR	5%	4%	4%	4%	3%	4%	4%	0%	0%
D	3%	3%	3%	4%	3%	3%	3%	4%	4%
F	4%	4%	4%	4%	4%	4%	5%	8%	9%
I	1%	1%	1%	1%	1%	1%	1%	2%	4%
NCr	3%	3%	3%	3%	3%	3%	4%	1%	1%
W	23%	23%	22%	22%	22%	23%	22%	20%	19%
% of Column	100%	100%	100%	100%	100%	100%	100%	100%	100%