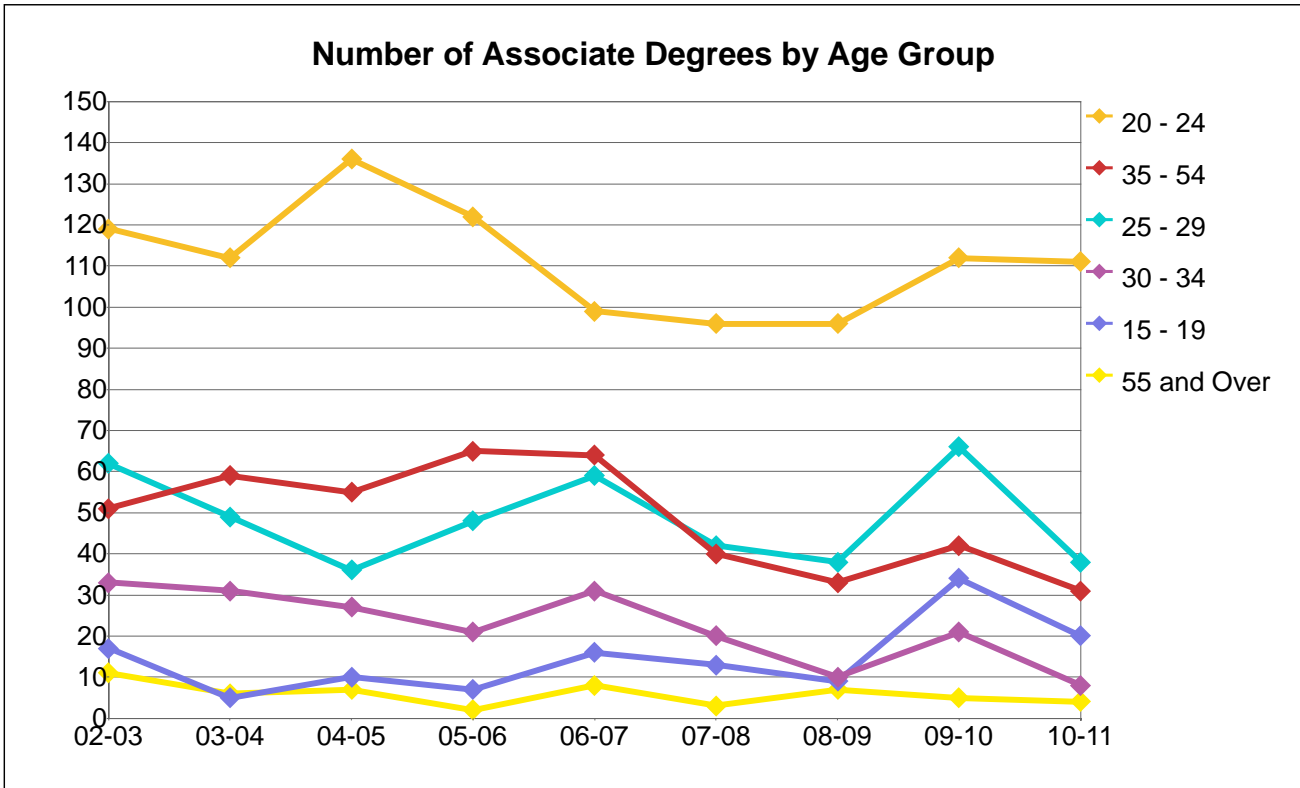


College of Alameda



Number of Associate Degrees by Age Group

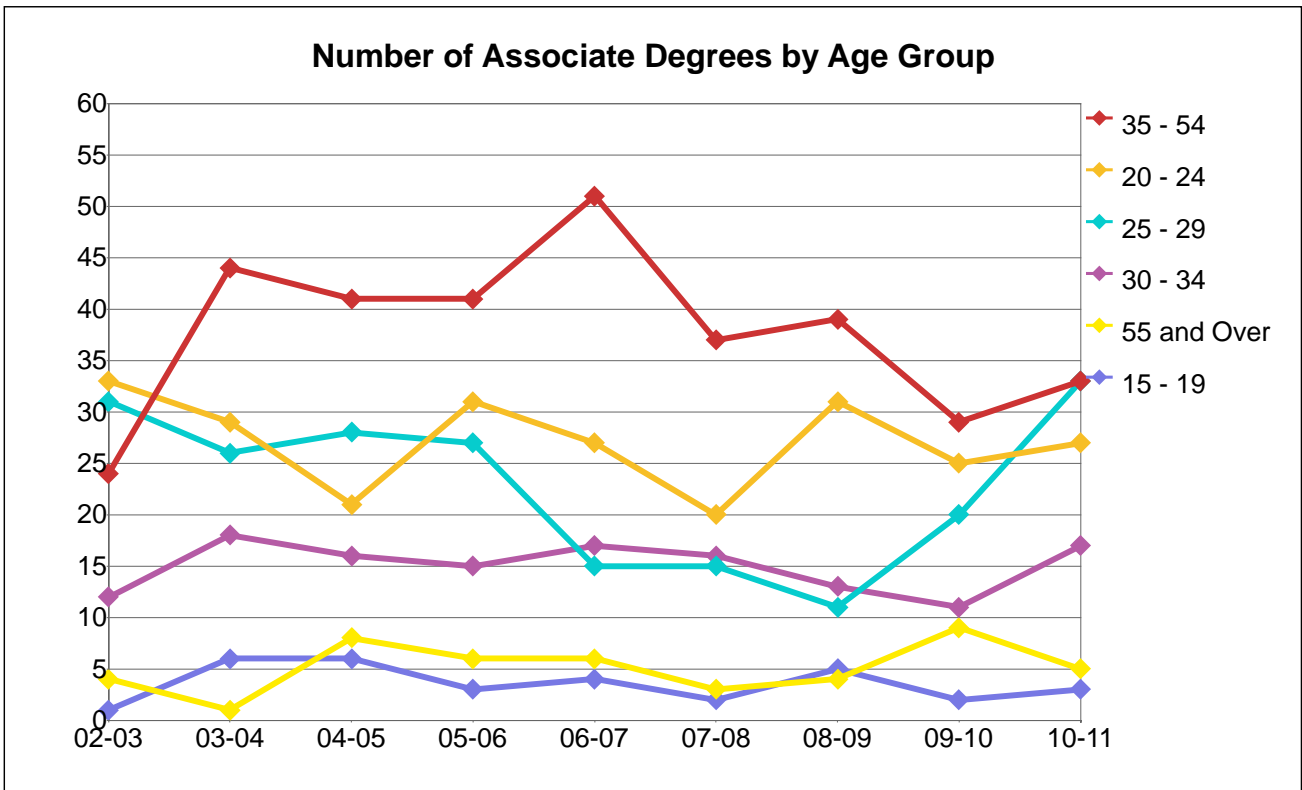
Age Group	02-03	03-04	04-05	05-06	06-07	07-08	08-09	09-10	10-11
15 - 19	17	5	10	7	16	13	9	34	20
20 - 24	119	112	136	122	99	96	96	112	111
25 - 29	62	49	36	48	59	42	38	66	38
30 - 34	33	31	27	21	31	20	10	21	8
35 - 54	51	59	55	65	64	40	33	42	31
55 and Over	11	6	7	2	8	3	7	5	4
Unkwn		3			0	1			
Total	293	265	271	265	277	215	193	280	212

Percentage Distribution of Associate Degrees by Age Group

Age Group	02-03	03-04	04-05	05-06	06-07	07-08	08-09	09-10	10-11
15 - 19	6%	2%	4%	3%	6%	6%	5%	12%	9%
20 - 24	41%	42%	50%	46%	36%	45%	50%	40%	52%
25 - 29	21%	18%	13%	18%	21%	20%	20%	24%	18%
30 - 34	11%	12%	10%	8%	11%	9%	5%	8%	4%
35 - 54	17%	22%	20%	25%	23%	19%	17%	15%	15%
55 and Over	4%	2%	3%	1%	3%	1%	4%	2%	2%
Unkwn		1%			0%	0%			
Total	100%	100%	100%	100%	100%	100%	100%	100%	100%

Note: Age as of 12/15 of the award year.

Berkeley City College



Number of Associate Degrees by Age Group

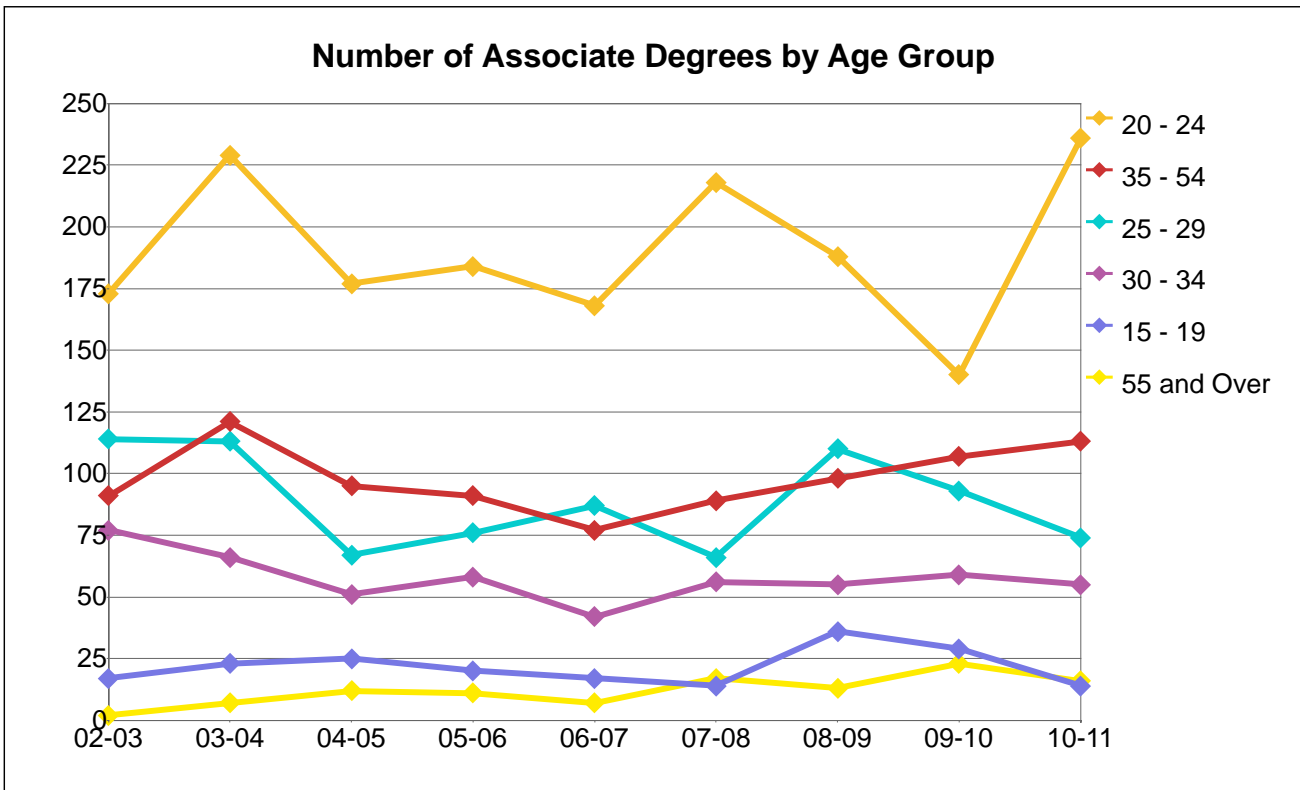
Age Group	02-03	03-04	04-05	05-06	06-07	07-08	08-09	09-10	10-11
15 - 19	1	6	6	3	4	2	5	2	3
20 - 24	33	29	21	31	27	20	31	25	27
25 - 29	31	26	28	27	15	15	11	20	33
30 - 34	12	18	16	15	17	16	13	11	17
35 - 54	24	44	41	41	51	37	39	29	33
55 and Over	4	1	8	6	6	3	4	9	5
Unkwn		1	1						
Total	105	125	121	123	120	93	103	96	118

Percentage Distribution of Associate Degrees by Age Group

Age Group	02-03	03-04	04-05	05-06	06-07	07-08	08-09	09-10	10-11
15 - 19	1%	5%	5%	2%	3%	2%	5%	2%	3%
20 - 24	31%	23%	17%	25%	23%	22%	30%	26%	23%
25 - 29	30%	21%	23%	22%	13%	16%	11%	21%	28%
30 - 34	11%	14%	13%	12%	14%	17%	13%	11%	14%
35 - 54	23%	35%	34%	33%	43%	40%	38%	30%	28%
55 and Over	4%	1%	7%	5%	5%	3%	4%	9%	4%
Unkwn		1%	1%						
Total	100%	100%	100%	100%	100%	100%	100%	100%	100%

Note: Age as of 12/15 of the award year.

Laney College



Number of Associate Degrees by Age Group

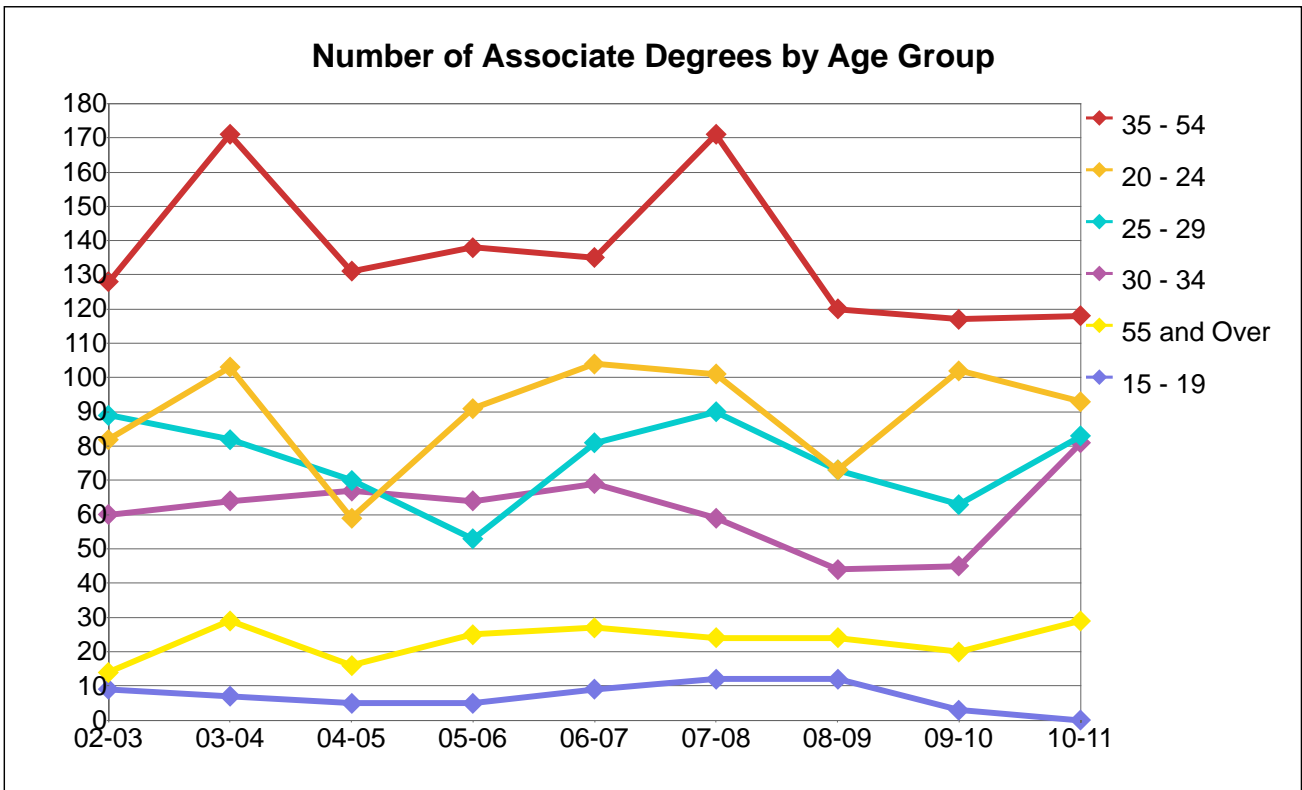
Age Group	02-03	03-04	04-05	05-06	06-07	07-08	08-09	09-10	10-11
15 - 19	17	23	25	20	17	14	36	29	14
20 - 24	173	229	177	184	168	218	188	140	236
25 - 29	114	113	67	76	87	66	110	93	74
30 - 34	77	66	51	58	42	56	55	59	55
35 - 54	91	121	95	91	77	89	98	107	113
55 and Over	2	7	12	11	7	17	13	23	16
Unkwn	3	5	3	0	1	1			
Total	477	564	430	440	399	461	500	451	508

Percentage Distribution of Associate Degrees by Age Group

Age Group	02-03	03-04	04-05	05-06	06-07	07-08	08-09	09-10	10-11
15 - 19	4%	4%	6%	5%	4%	3%	7%	6%	3%
20 - 24	36%	41%	41%	42%	42%	47%	38%	31%	46%
25 - 29	24%	20%	16%	17%	22%	14%	22%	21%	15%
30 - 34	16%	12%	12%	13%	11%	12%	11%	13%	11%
35 - 54	19%	21%	22%	21%	19%	19%	20%	24%	22%
55 and Over	0%	1%	3%	3%	2%	4%	3%	5%	3%
Unkwn	1%	1%	1%	0%	0%	0%			
Total	100%	100%	100%	100%	100%	100%	100%	100%	100%

Note: Age as of 12/15 of the award year.

Merritt College



Number of Associate Degrees by Age Group

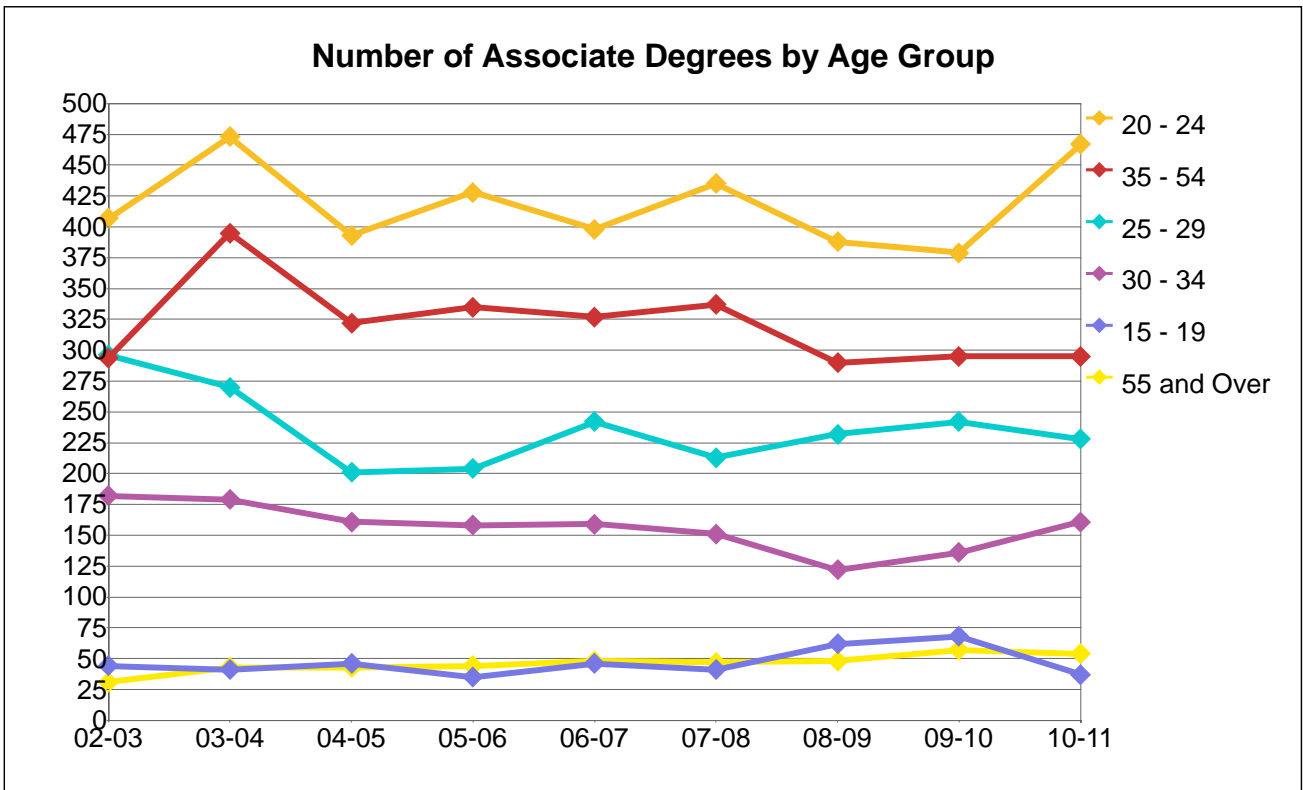
Age Group	02-03	03-04	04-05	05-06	06-07	07-08	08-09	09-10	10-11
15 - 19	9	7	5	5	9	12	12	3	
20 - 24	82	103	59	91	104	101	73	102	93
25 - 29	89	82	70	53	81	90	73	63	83
30 - 34	60	64	67	64	69	59	44	45	81
35 - 54	128	171	131	138	135	171	120	117	118
55 and Over	14	29	16	25	27	24	24	20	29
Unkwn		4			2	2			
Total	382	460	348	376	427	459	346	350	404

Percentage Distribution of Associate Degrees by Age Group

Age Group	02-03	03-04	04-05	05-06	06-07	07-08	08-09	09-10	10-11
15 - 19	2%	2%	1%	1%	2%	3%	3%	1%	
20 - 24	21%	22%	17%	24%	24%	22%	21%	29%	23%
25 - 29	23%	18%	20%	14%	19%	20%	21%	18%	21%
30 - 34	16%	14%	19%	17%	16%	13%	13%	13%	20%
35 - 54	34%	37%	38%	37%	32%	37%	35%	33%	29%
55 and Over	4%	6%	5%	7%	6%	5%	7%	6%	7%
Unkwn		1%			0%	0%			
Total	100%	100%	100%	100%	100%	100%	100%	100%	100%

Note: Age as of 12/15 of the award year.

Peralta Community College District



Number of Associate Degrees by Age Group

Age Group	02-03	03-04	04-05	05-06	06-07	07-08	08-09	09-10	10-11
15 - 19	44	41	46	35	46	41	62	68	37
20 - 24	407	473	393	428	398	435	388	379	467
25 - 29	296	270	201	204	242	213	232	242	228
30 - 34	182	179	161	158	159	151	122	136	161
35 - 54	294	395	322	335	327	337	290	295	295
55 and Over	31	43	43	44	48	47	48	57	54
Unkwn	3	13	4	0	3	4			
Total	1,257	1,414	1,170	1,204	1,223	1,228	1,142	1,177	1,242

Percentage Distribution of Associate Degrees by Age Group

Age Group	02-03	03-04	04-05	05-06	06-07	07-08	08-09	09-10	10-11
15 - 19	4%	3%	4%	3%	4%	3%	5%	6%	3%
20 - 24	32%	33%	34%	36%	33%	35%	34%	32%	38%
25 - 29	24%	19%	17%	17%	20%	17%	20%	21%	18%
30 - 34	14%	13%	14%	13%	13%	12%	11%	12%	13%
35 - 54	23%	28%	28%	28%	27%	27%	25%	25%	24%
55 and Over	2%	3%	4%	4%	4%	4%	4%	5%	4%
Unkwn	0%	1%	0%	0%	0%	0%			
Total	100%	100%	100%	100%	100%	100%	100%	100%	100%

Note: Age as of 12/15 of the award year.