



Peralta Facts

Employee Statistics

College of Alameda

April 2010

Peralta Community College District

Office of Institutional Research

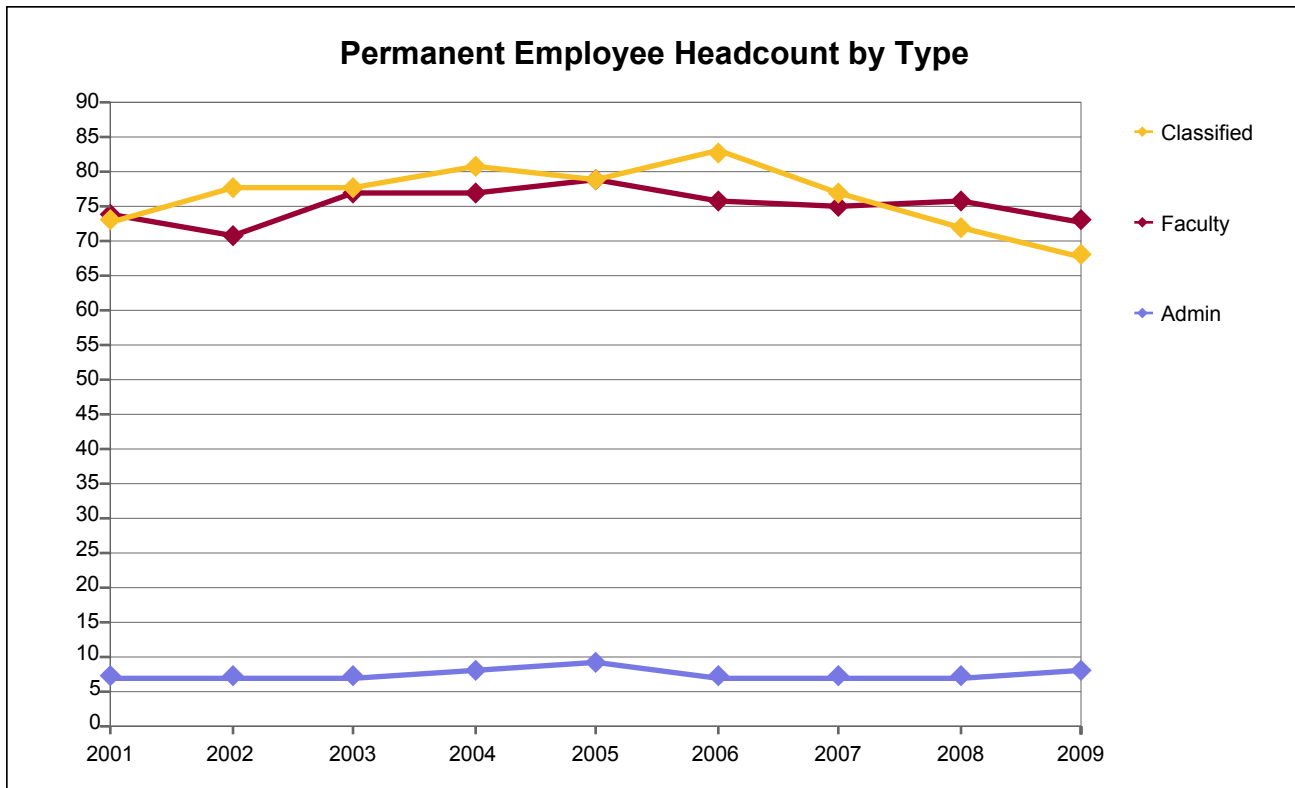
Peralta Facts Employee Statistics

Peralta Community College District

Table of Contents

Permanent Employee Headcount by Type and EEO6 Occupation.....	1
Permanent & Temporary Employee FTE by Assignment and EEO6 Occupation	2
Permanent Administrative Headcount by Gender.....	3
Permanent Administrative Headcount by Ethnicity.....	4
Permanent Administrative Headcount by Age Range	5
Permanent Faculty Headcount by Gender	6
Permanent Faculty Headcount by Ethnicity.....	7
Permanent Faculty Headcount by Age Range	8
Permanent Classified Headcount by Gender	9
Permanent Classified Headcount by Ethnicity.....	10
Permanent Classified Headcount by Age Range	11

College of Alameda

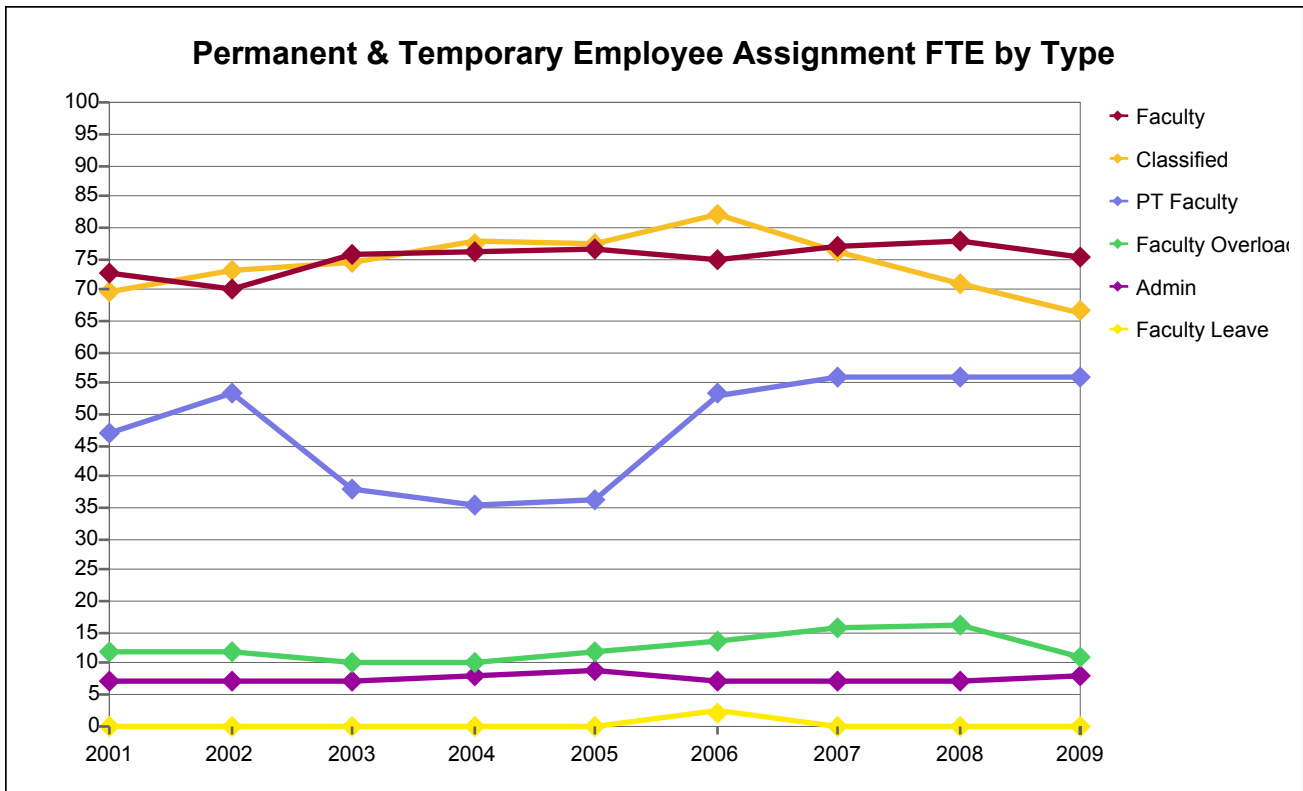


Permanent Employee Headcount by Type and EEO6 Occupation

Emp Type	EEO6 Occ2	2001	2002	2003	2004	2005	2006	2007	2008	2009
Admin	Admin	7	7	7	8	9	7	7	7	8
Faculty	Faculty	74	71	77	77	79	76	75	76	73
Classified	Professional	20	21	20	20	17	21	18	15	12
	Clerical	24	25	25	28	31	29	27	25	26
	Technical	16	19	17	18	15	16	17	17	15
	Skilled						1			
	Maintenance	13	13	16	15	16	16	15	15	15
	All Classified	73	78	78	81	79	83	77	72	68
Total		154	156	162	166	167	166	159	155	149

Note: Due to data loss during the conversion to Peoplesoft, data for 2007 is estimated.

College of Alameda

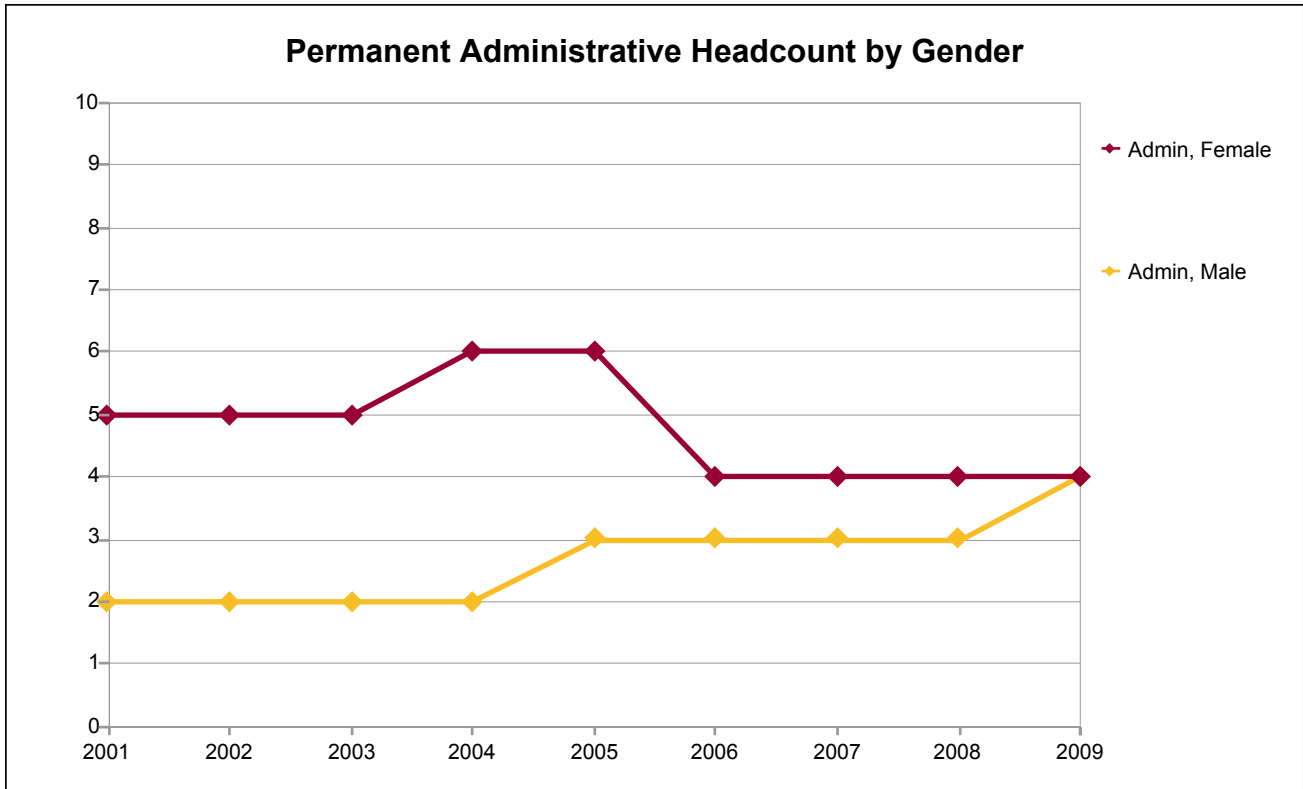


Permanent & Temporary Assignment FTE by Type and EEO6 Occupation

Emp Type3	Emp Type3	2001	2002	2003	2004	2005	2006	2007	2008	2009
Admin	Admin	7.0	7.0	7.0	8.0	9.0	7.0	7.0	7.0	8.0
Faculty	Faculty	72.8	70.3	75.7	76.1	76.7	74.9	77.0	78.0	75.4
	Faculty Leave	0.0	0.0	0.0	0.0	0.0	2.3	0.0	0.0	0.0
	Faculty Overload	11.7	11.8	10.2	10.2	12.0	13.7	15.8	16.0	11.0
	PT Faculty	46.9	53.2	37.9	35.6	36.5	53.2	56.1	56.1	56.1
	Total		131.4	135.4	123.8	121.8	125.2	144.0	149.0	150.2
Classified	Clerical	23.5	24.4	25.0	27.0	31.0	29.0	26.5	24.5	25.5
	Maintenance	13.0	13.0	16.0	15.0	16.0	16.0	14.8	14.8	14.8
	Professional	20.0	21.0	19.1	20.0	17.0	20.6	18.0	15.0	12.0
	Skilled	0.0	0.0	0.0	0.0	0.0	1.0	0.0	0.0	0.0
	Technical	13.4	14.8	14.4	15.7	13.5	15.6	16.8	16.8	14.3
Total		69.8	73.2	74.5	77.7	77.5	82.2	76.0	71.0	66.5
Total		208.2	215.6	205.3	207.5	211.7	233.2	232.0	228.2	217.0

Note: Due to data loss during the conversion to Peoplesoft, data for 2007 is estimated.

College of Alameda



Permanent Administrative Headcount by Gender

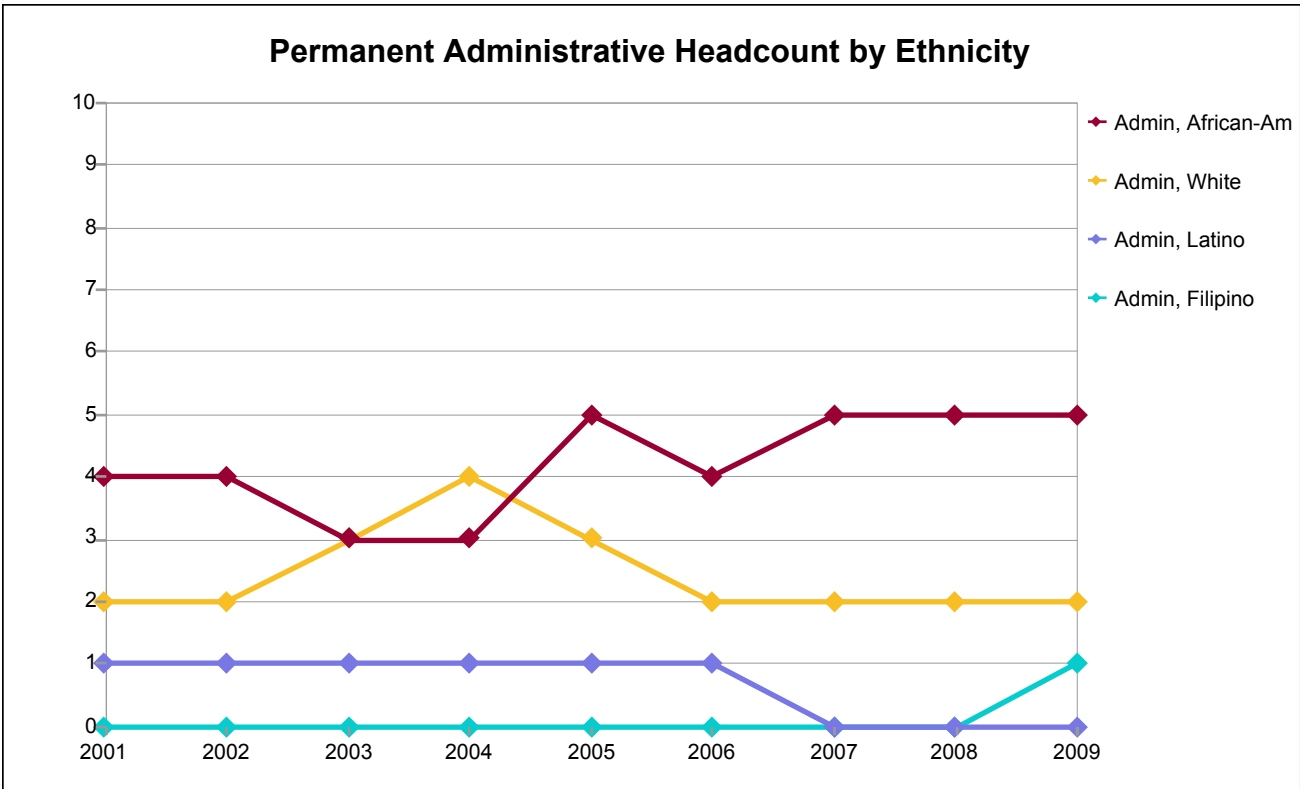
Gender	2001	2002	2003	2004	2005	2006	2007	2008	2009
Female	5	5	5	6	6	4	4	4	4
Male	2	2	2	2	3	3	3	3	4
Total	7	7	7	8	9	7	7	7	8

Percentage Distribution of Permanent Administrators by Gender

Gender	2001	2002	2003	2004	2005	2006	2007	2008	2009
Female	71%	71%	71%	75%	67%	57%	57%	57%	50%
Male	29%	29%	29%	25%	33%	43%	43%	43%	50%
Total	100%	100%	100%	100%	100%	100%	100%	100%	100%

Note: Due to data loss during the conversion to Peoplesoft, data for 2007 is estimated.

College of Alameda



Permanent Administrative Headcount by Ethnicity

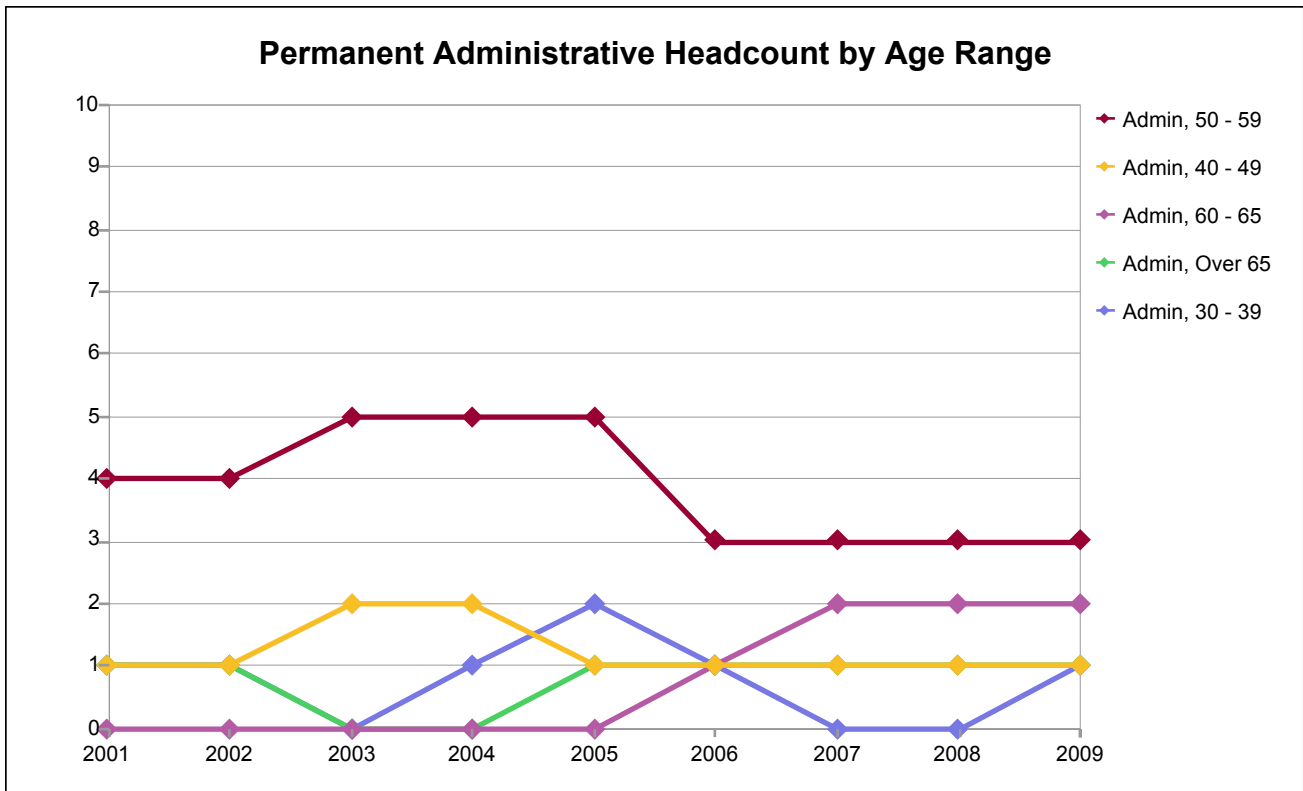
Ethnicity	2001	2002	2003	2004	2005	2006	2007	2008	2009
African-Am	4	4	3	3	5	4	5	5	5
Filipino	0	0	0	0	0	0	0	0	1
Latino	1	1	1	1	1	1	0	0	0
White	2	2	3	4	3	2	2	2	2
Total	7	7	7	8	9	7	7	7	8

Percentage Distribution of Permanent Administrators by Ethnicity

Ethnicity	2001	2002	2003	2004	2005	2006	2007	2008	2009
African-Am	57%	57%	43%	38%	56%	57%	71%	71%	63%
Filipino	0%	0%	0%	0%	0%	0%	0%	0%	13%
Latino	14%	14%	14%	13%	11%	14%	0%	0%	0%
White	29%	29%	43%	50%	33%	29%	29%	29%	25%
Total	100%	100%	100%	100%	100%	100%	100%	100%	100%

Note: Due to data loss during the conversion to Peoplesoft, data for 2007 is estimated.

College of Alameda



Permanent Administrative Headcount by Age Range

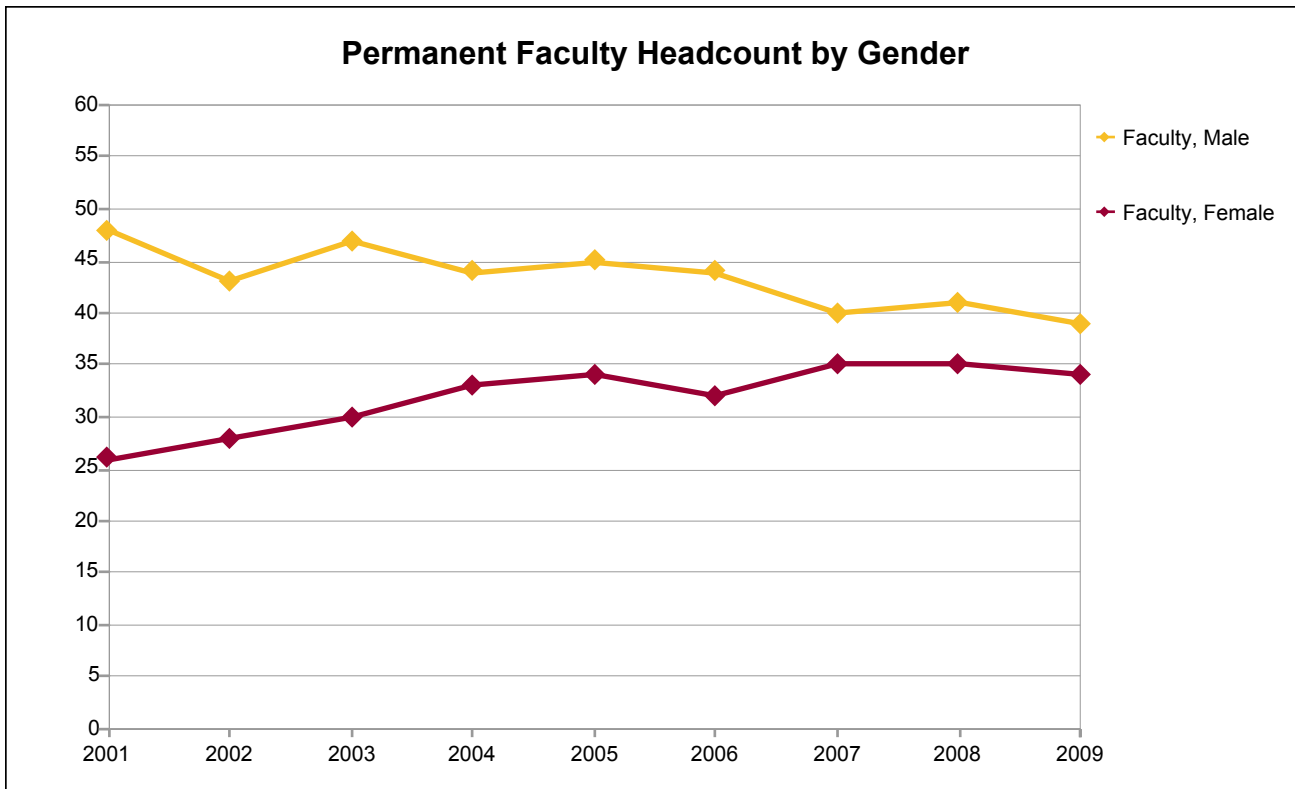
Age Grp	2001	2002	2003	2004	2005	2006	2007	2008	2009
30 - 39	1	1	0	1	2	1	0	0	1
40 - 49	1	1	2	2	1	1	1	1	1
50 - 59	4	4	5	5	5	3	3	3	3
60 - 65	0	0	0	0	0	1	2	2	2
Over 65	1	1	0	0	1	1	1	1	1
Total	7	7	7	8	9	7	7	7	8

Percentage Distribution of Permanent Administrators by Age Range

Age Grp	2001	2002	2003	2004	2005	2006	2007	2008	2009
30 - 39	14%	14%	0%	13%	22%	14%	0%	0%	13%
40 - 49	14%	14%	29%	25%	11%	14%	14%	14%	13%
50 - 59	57%	57%	71%	63%	56%	43%	43%	43%	38%
60 - 65	0%	0%	0%	0%	0%	14%	29%	29%	25%
Over 65	14%	14%	0%	0%	11%	14%	14%	14%	13%
Total	100%	100%	100%	100%	100%	100%	100%	100%	100%

Note: Due to data loss during the conversion to Peoplesoft, data for 2007 is estimated.

College of Alameda



Permanent Faculty Headcount by Gender

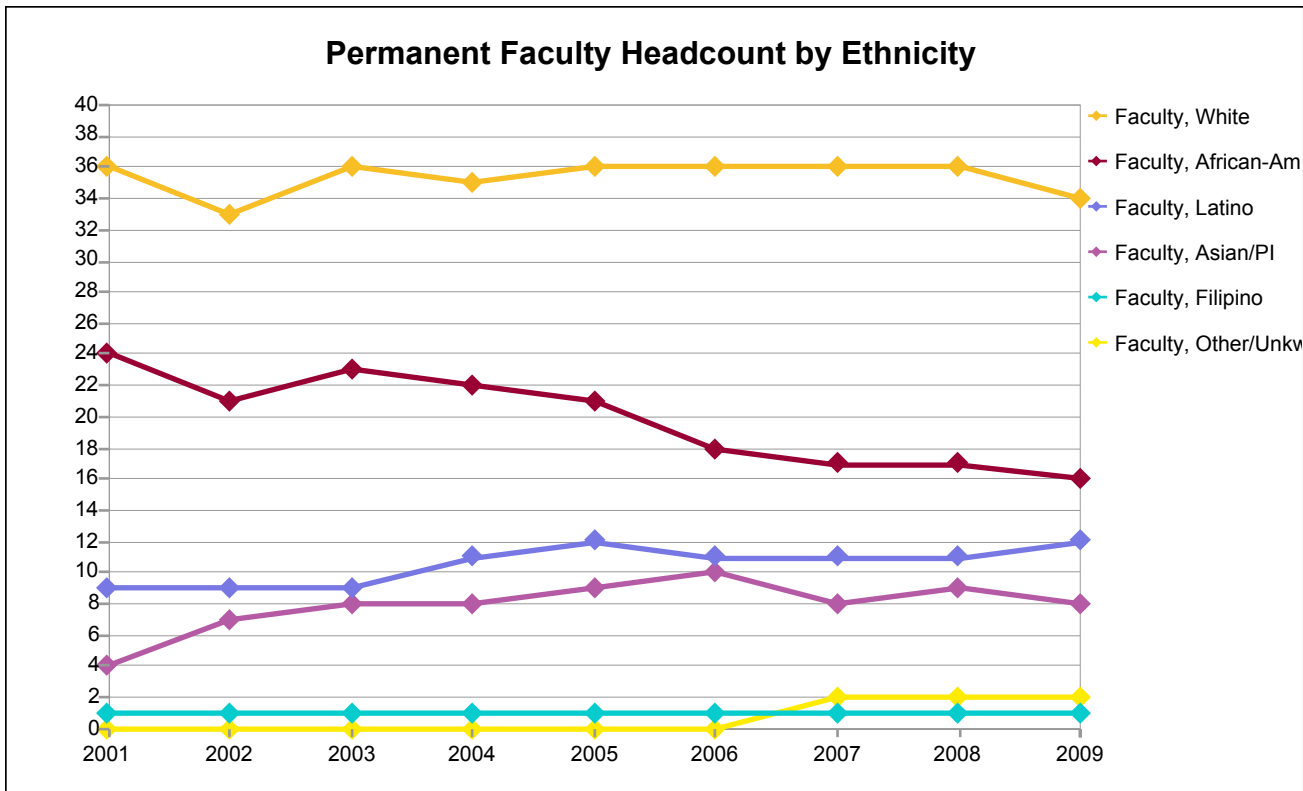
Gender	2001	2002	2003	2004	2005	2006	2007	2008	2009
Female	26	28	30	33	34	32	35	35	34
Male	48	43	47	44	45	44	40	41	39
Total	74	71	77	77	79	76	75	76	73

Percentage Distribution of Permanent Faculty by Gender

Gender	2001	2002	2003	2004	2005	2006	2007	2008	2009
Female	35%	39%	39%	43%	43%	42%	47%	46%	47%
Male	65%	61%	61%	57%	57%	58%	53%	54%	53%
Total	100%	100%	100%	100%	100%	100%	100%	100%	100%

Note: Due to data loss during the conversion to Peoplesoft, data for 2007 is estimated.

College of Alameda



Permanent Faculty Headcount by Ethnicity

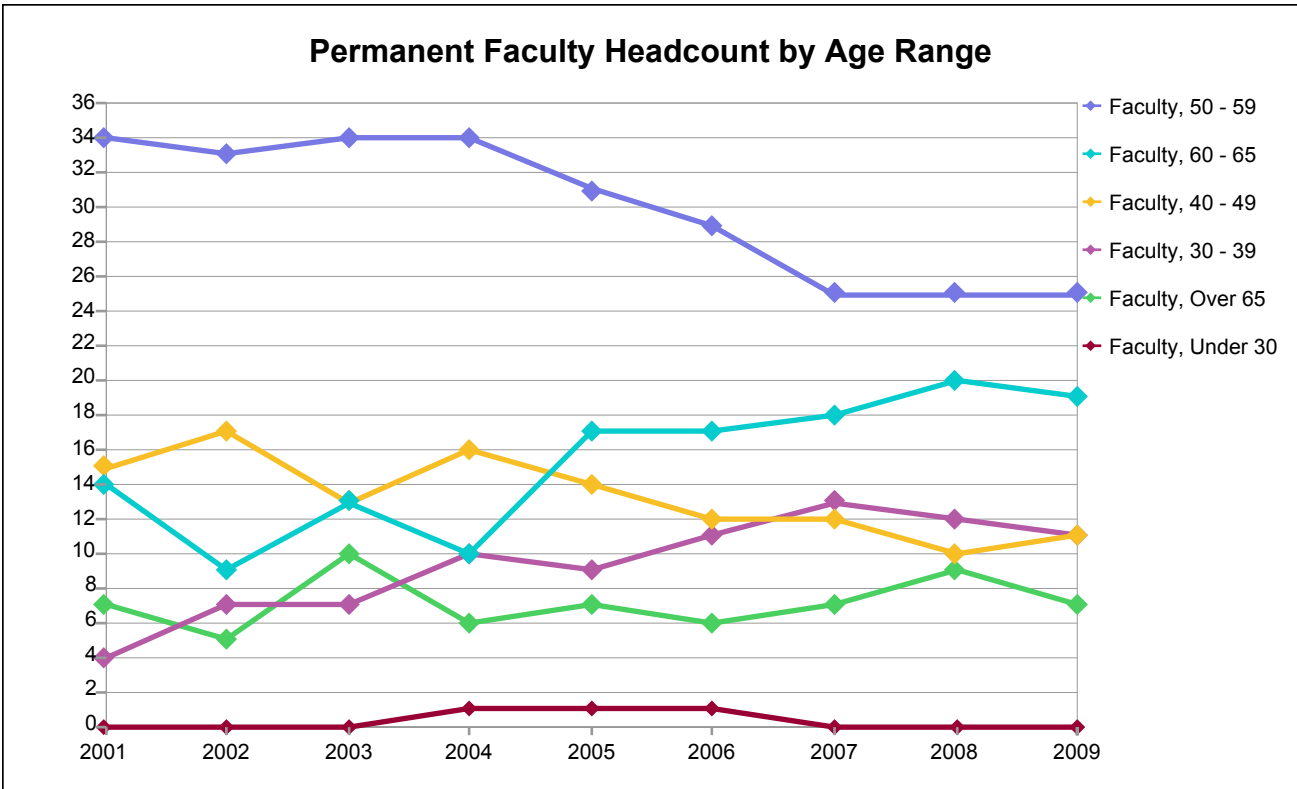
Ethnicity	2001	2002	2003	2004	2005	2006	2007	2008	2009
African-Am	24	21	23	22	21	18	17	17	16
Asian/PI	4	7	8	8	9	10	8	9	8
Filipino	1	1	1	1	1	1	1	1	1
Latino	9	9	9	11	12	11	11	11	12
Other/Unkwr	0	0	0	0	0	0	2	2	2
White	36	33	36	35	36	36	36	36	34
Total	74	71	77	77	79	76	75	76	73

Percentage Distribution of Permanent Faculty by Ethnicity

Ethnicity	2001	2002	2003	2004	2005	2006	2007	2008	2009
African-Am	32%	30%	30%	29%	27%	24%	23%	22%	22%
Asian/PI	5%	10%	10%	10%	11%	13%	11%	12%	11%
Filipino	1%	1%	1%	1%	1%	1%	1%	1%	1%
Latino	12%	13%	12%	14%	15%	14%	15%	14%	16%
Other/Unkwr	0%	0%	0%	0%	0%	0%	3%	3%	3%
White	49%	46%	47%	45%	46%	47%	48%	47%	47%
Total	100%	100%	100%	100%	100%	100%	100%	100%	100%

Note: Due to data loss during the conversion to Peoplesoft, data for 2007 is estimated.

College of Alameda



Permanent Faculty Headcount by Age Range

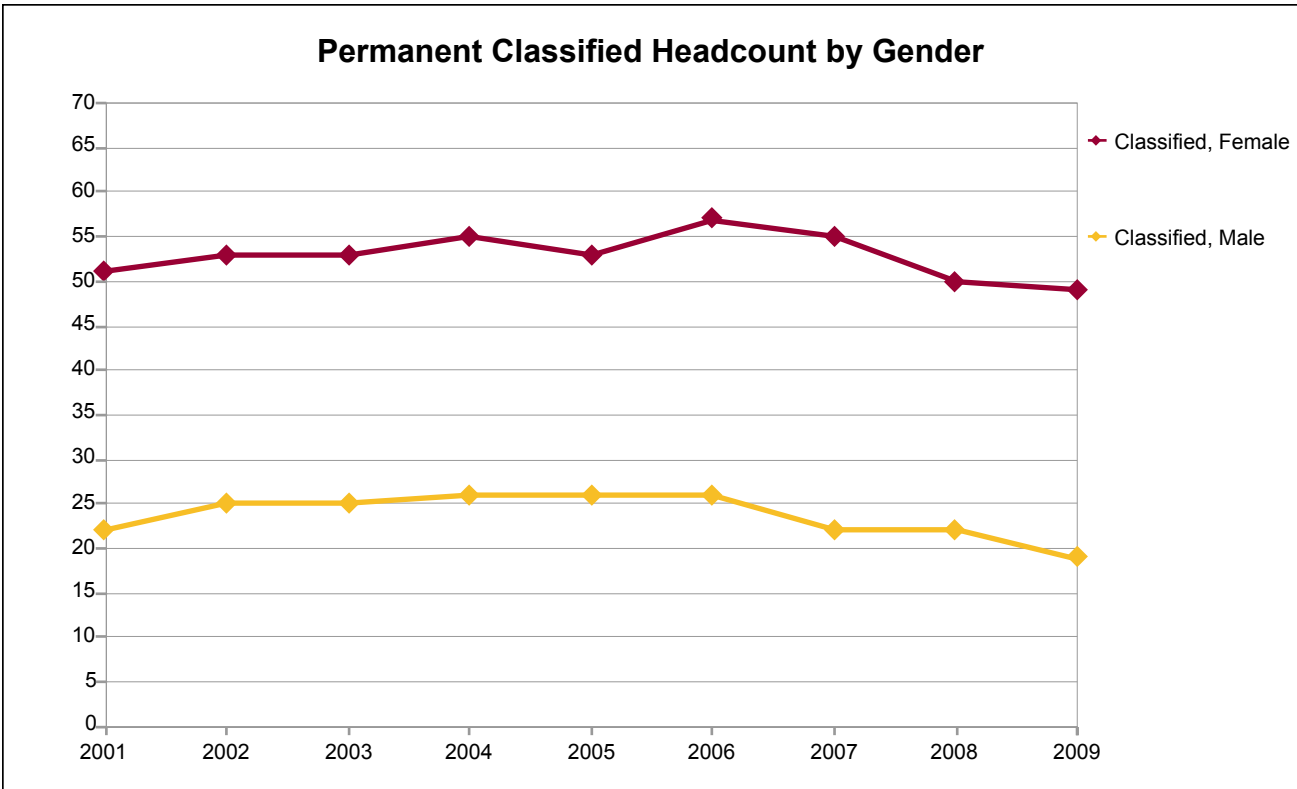
Age Grp	2001	2002	2003	2004	2005	2006	2007	2008	2009
Under 30	0	0	0	1	1	1	0	0	0
30 - 39	4	7	7	10	9	11	13	12	11
40 - 49	15	17	13	16	14	12	12	10	11
50 - 59	34	33	34	34	31	29	25	25	25
60 - 65	14	9	13	10	17	17	18	20	19
Over 65	7	5	10	6	7	6	7	9	7
Total	74	71	77	77	79	76	75	76	73

Percentage Distribution of Permanent Faculty by Age Range

Age Grp	2001	2002	2003	2004	2005	2006	2007	2008	2009
Under 30	0%	0%	0%	1%	1%	1%	0%	0%	0%
30 - 39	5%	10%	9%	13%	11%	14%	17%	16%	15%
40 - 49	20%	24%	17%	21%	18%	16%	16%	13%	15%
50 - 59	46%	46%	44%	44%	39%	38%	33%	33%	34%
60 - 65	19%	13%	17%	13%	22%	22%	24%	26%	26%
Over 65	9%	7%	13%	8%	9%	8%	9%	12%	10%
Total	100%	100%	100%	100%	100%	100%	100%	100%	100%

Note: Due to data loss during the conversion to Peoplesoft, data for 2007 is estimated.

College of Alameda



Permanent Classified Headcount by Gender

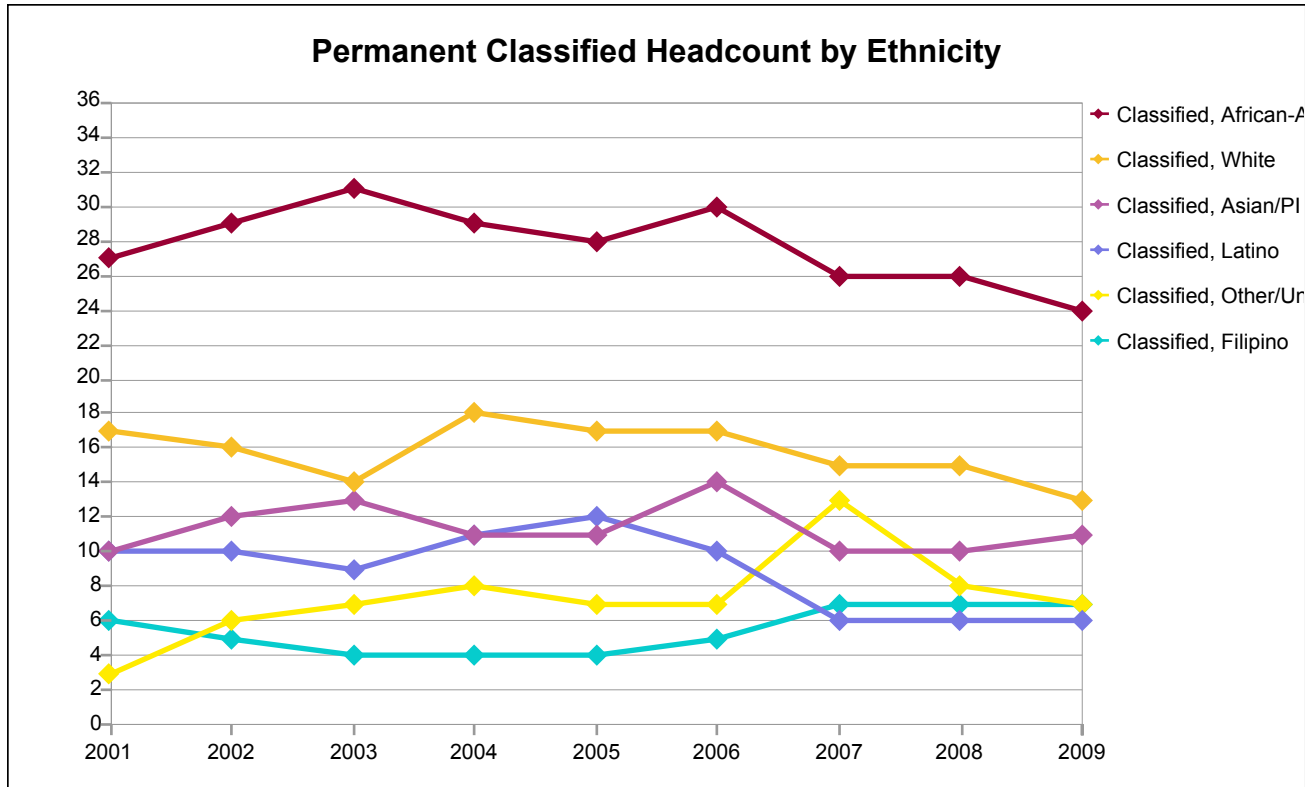
Gender	2001	2002	2003	2004	2005	2006	2007	2008	2009
Female	51	53	53	55	53	57	55	50	49
Male	22	25	25	26	26	26	22	22	19
Total	73	78	78	81	79	83	77	72	68

Percentage Distribution of Permanent Classified by Gender

Gender	2001	2002	2003	2004	2005	2006	2007	2008	2009
Female	70%	68%	68%	68%	67%	69%	71%	69%	72%
Male	30%	32%	32%	32%	33%	31%	29%	31%	28%
Total	100%	100%	100%	100%	100%	100%	100%	100%	100%

Note: Due to data loss during the conversion to Peoplesoft, data for 2007 is estimated.

College of Alameda



Permanent Classified Headcount by Ethnicity

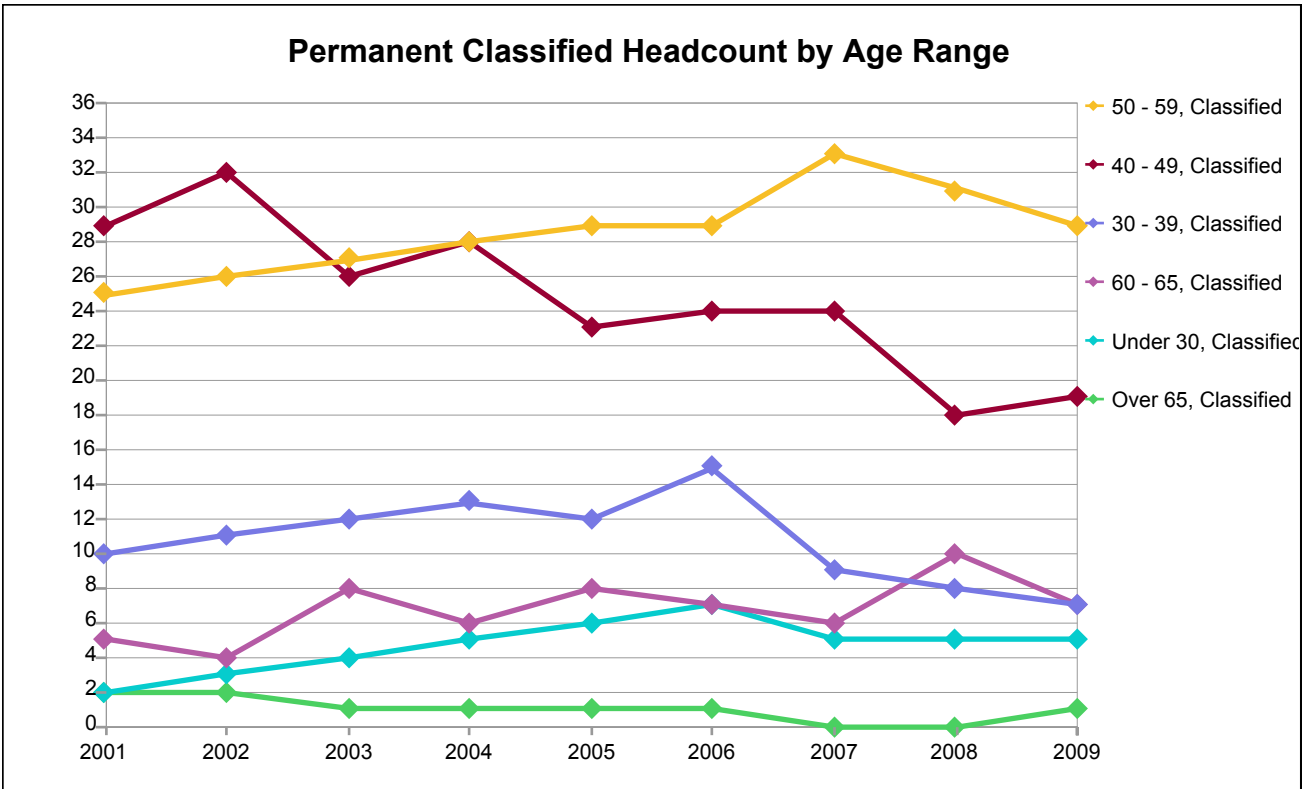
Ethnicity	2001	2002	2003	2004	2005	2006	2007	2008	2009
African-Am	27	29	31	29	28	30	26	26	24
Asian/PI	10	12	13	11	11	14	10	10	11
Filipino	6	5	4	4	4	5	7	7	7
Latino	10	10	9	11	12	10	6	6	6
Other/Unkwr	3	6	7	8	7	7	13	8	7
White	17	16	14	18	17	17	15	15	13
Total	73	78	78	81	79	83	77	72	68

Percentage Distribution of Permanent Classified by Ethnicity

Ethnicity	2001	2002	2003	2004	2005	2006	2007	2008	2009
African-Am	37%	37%	40%	36%	35%	36%	34%	36%	35%
Asian/PI	14%	15%	17%	14%	14%	17%	13%	14%	16%
Filipino	8%	6%	5%	5%	5%	6%	9%	10%	10%
Latino	14%	13%	12%	14%	15%	12%	8%	8%	9%
Other/Unkwr	4%	8%	9%	10%	9%	8%	17%	11%	10%
White	23%	21%	18%	22%	22%	20%	19%	21%	19%
Total	100%	100%	100%	100%	100%	100%	100%	100%	100%

Note: Due to data loss during the conversion to Peoplesoft, data for 2007 is estimated.

College of Alameda



Permanent Classified Headcount by Age Range

Age Grp	2001	2002	2003	2004	2005	2006	2007	2008	2009
Under 30	2	3	4	5	6	7	5	5	5
30 - 39	10	11	12	13	12	15	9	8	7
40 - 49	29	32	26	28	23	24	24	18	19
50 - 59	25	26	27	28	29	29	33	31	29
60 - 65	5	4	8	6	8	7	6	10	7
Over 65	2	2	1	1	1	1	0	0	1
Total	73	78	78	81	79	83	77	72	68

Percentage Distribution of Permanent Classified by Age Range

Age Grp	2001	2002	2003	2004	2005	2006	2007	2008	2009
Under 30	3%	4%	5%	6%	8%	8%	6%	7%	7%
30 - 39	14%	14%	15%	16%	15%	18%	12%	11%	10%
40 - 49	40%	41%	33%	35%	29%	29%	31%	25%	28%
50 - 59	34%	33%	35%	35%	37%	35%	43%	43%	43%
60 - 65	7%	5%	10%	7%	10%	8%	8%	14%	10%
Over 65	3%	3%	1%	1%	1%	1%	0%	0%	1%
Total	100%	100%	100%	100%	100%	100%	100%	100%	100%

Note: Due to data loss during the conversion to Peoplesoft, data for 2007 is estimated.