



Peralta Facts

Employee Statistics

District Office

April 2010

Peralta Community College District
Office of Institutional Research

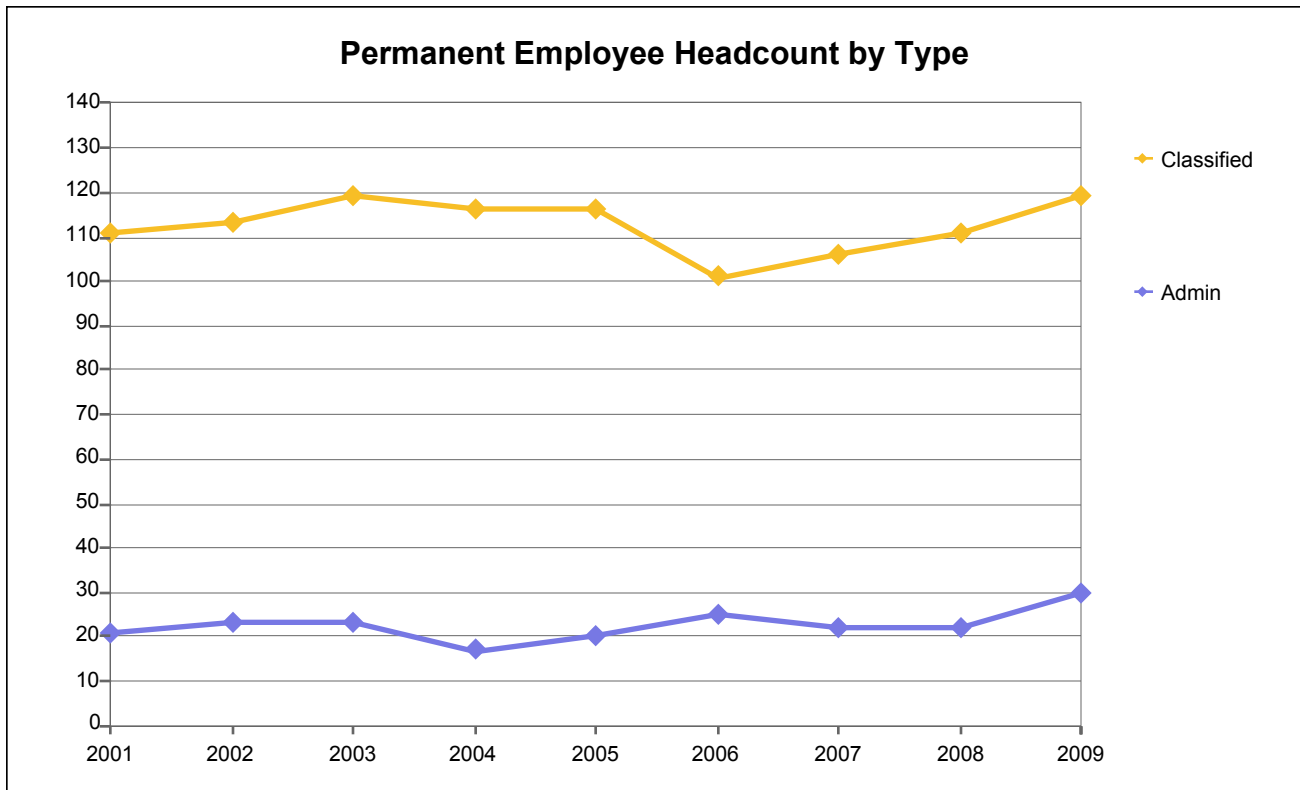
Peralta Facts Employee Statistics

Peralta Community College District

Table of Contents

Permanent Employee Headcount by Type and EEO6 Occupation.....	1
Permanent & Temporary Employee FTE by Assignment and EEO6 Occupation	2
Permanent Administrative Headcount by Gender.....	3
Permanent Administrative Headcount by Ethnicity.....	4
Permanent Administrative Headcount by Age Range	5
Permanent Classified Headcount by Gender	6
Permanent Classified Headcount by Ethnicity.....	7
Permanent Classified Headcount by Age Range	8

District Office

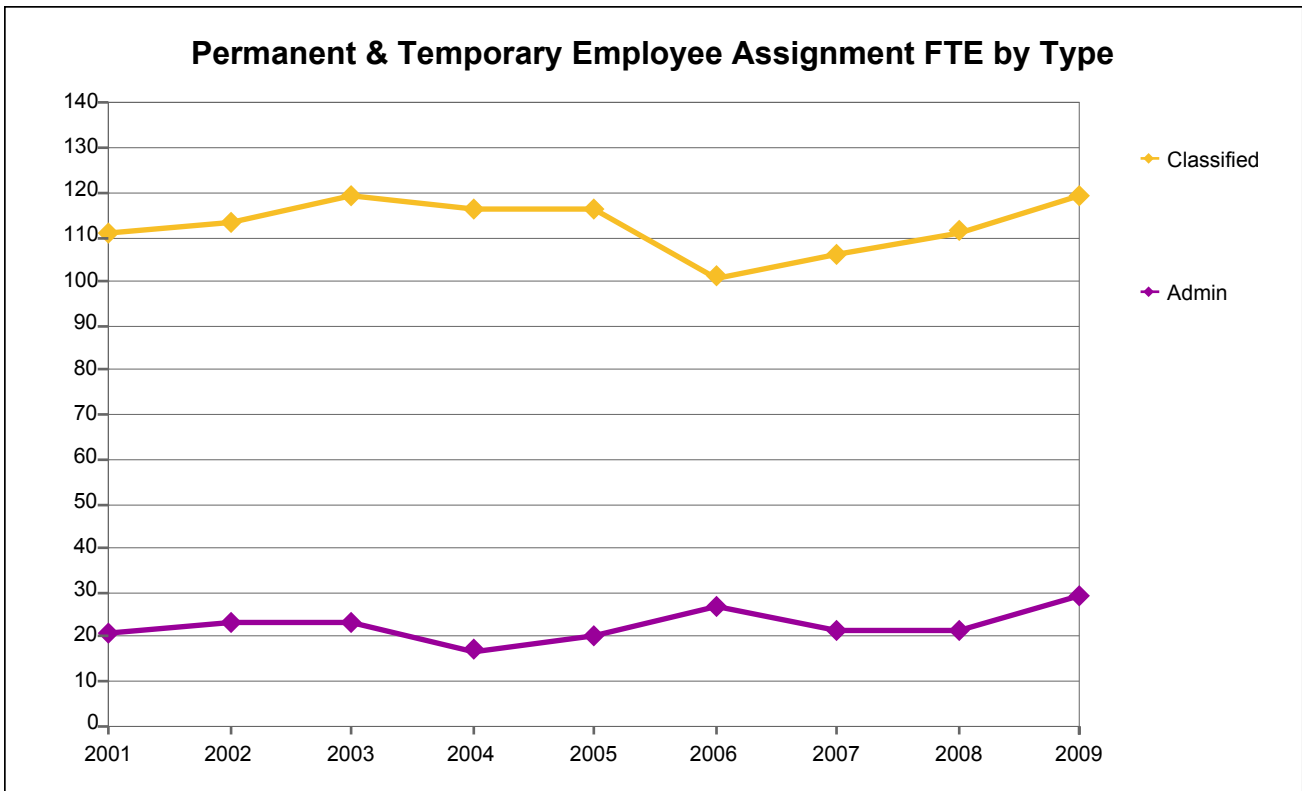


Permanent Employee Headcount by Type and EEO6 Occupation

Emp Type	EEO6 Occ2	2001	2002	2003	2004	2005	2006	2007	2008	2009
Admin	Admin	21	23	23	17	20	25	22	22	30
Classified	Professional	32	34	36	32	35	29	27	26	25
	Clerical	26	25	24	27	26	20	19	18	19
	Technical	21	22	26	23	23	23	29	35	41
	Skilled	15	15	15	14	16	15	15	15	15
	Maintenance	17	17	18	20	16	14	16	17	19
	Tot Classified	111	113	119	116	116	101	106	111	119
Total		132	136	142	133	136	126	128	133	149

Note: Due to data loss during the conversion to Peoplesoft, data for 2007 is estimated.

District Office

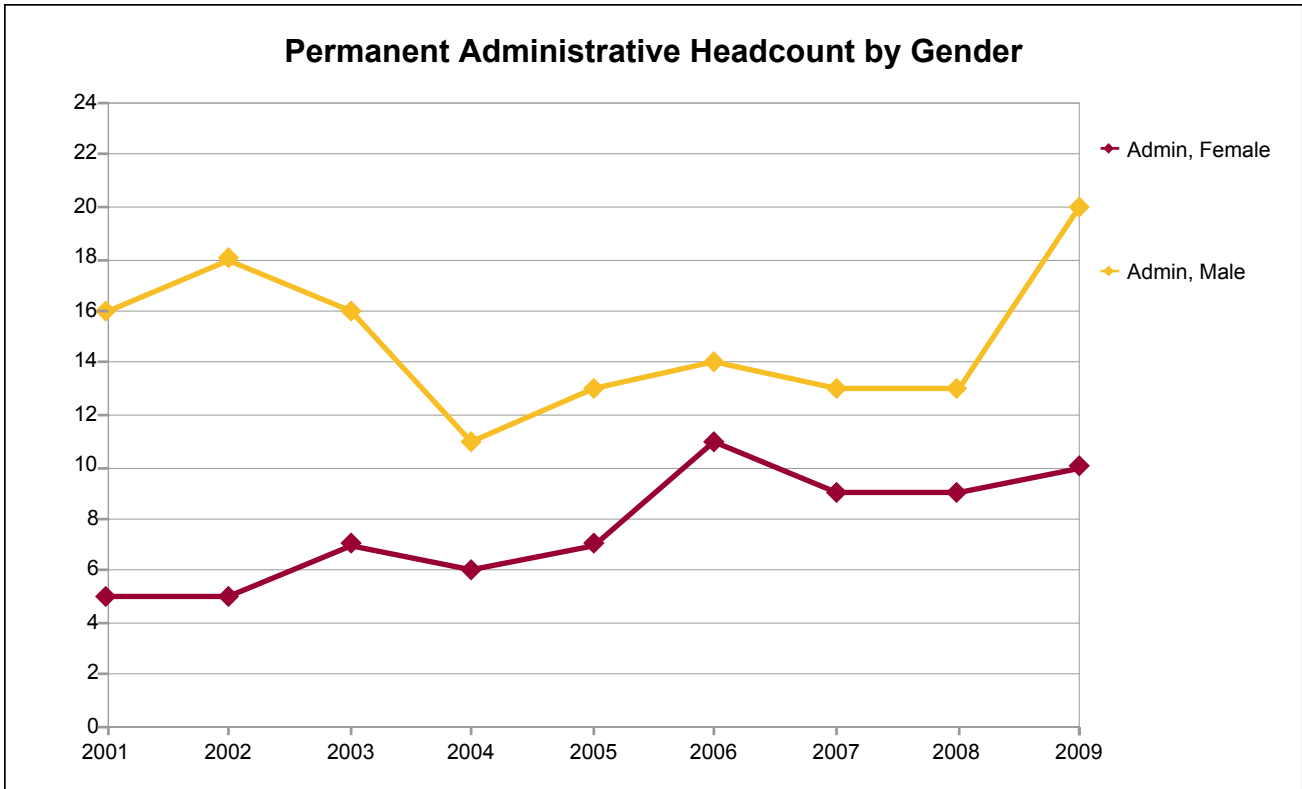


Permanent & Temporary Assignment FTE by Type and EEO6 Occupation

Emp Type3	Emp Type3	2001	2002	2003	2004	2005	2006	2007	2008	2009
Admin	Admin	21.0	23.0	23.0	17.0	20.0	27.0	21.5	21.5	29.5
Classified	Clerical	26.0	25.0	24.0	27.0	26.0	20.0	19.0	18.0	19.0
	Maintenance	17.0	17.0	18.0	20.0	16.0	14.0	16.0	17.0	19.0
	Professional	32.0	34.0	36.0	32.0	35.0	29.0	27.2	26.2	25.2
	Skilled	15.0	15.0	15.0	14.0	16.0	15.0	15.0	15.0	15.0
	Technical	21.0	22.0	26.0	23.0	23.0	23.0	29.0	35.0	41.0
	Subtotal		111.0	113.0	119.0	116.0	116.0	101.0	106.2	111.2
Total		132.0	136.0	142.0	133.0	136.0	128.0	127.7	132.7	148.7

Note: Due to data loss during the conversion to Peoplesoft, data for 2007 is estimated.

District Office



Permanent Administrative Headcount by Gender

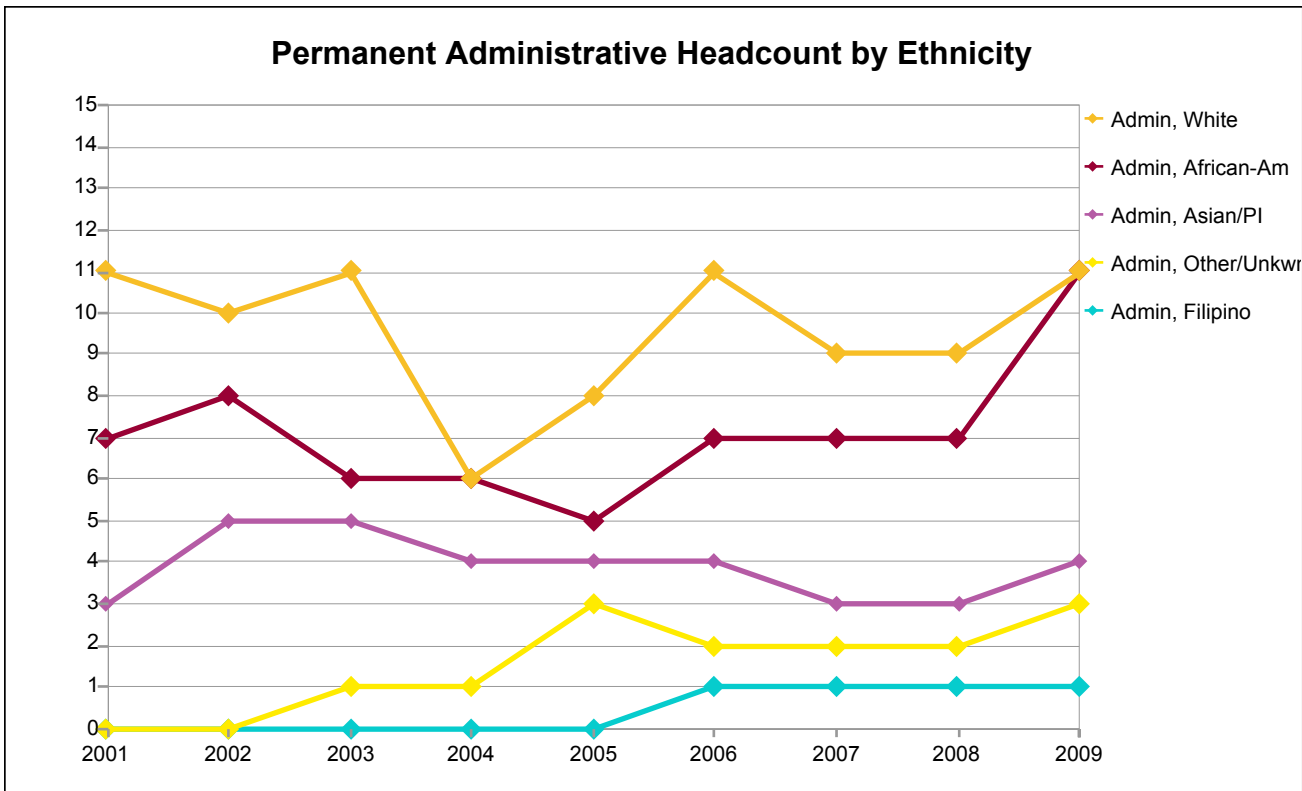
Gender	2001	2002	2003	2004	2005	2006	2007	2008	2009
Female	5	5	7	6	7	11	9	9	10
Male	16	18	16	11	13	14	13	13	20
Total	21	23	23	17	20	25	22	22	30

Percentage Distribution of Permanent Administrators by Gender

Gender	2001	2002	2003	2004	2005	2006	2007	2008	2009
Female	24%	22%	30%	35%	35%	44%	41%	41%	33%
Male	76%	78%	70%	65%	65%	56%	59%	59%	67%
Total	100%	100%	100%	100%	100%	100%	100%	100%	100%

Note: Due to data loss during the conversion to Peoplesoft, data for 2007 is estimated.

District Office



Permanent Administrative Headcount by Ethnicity

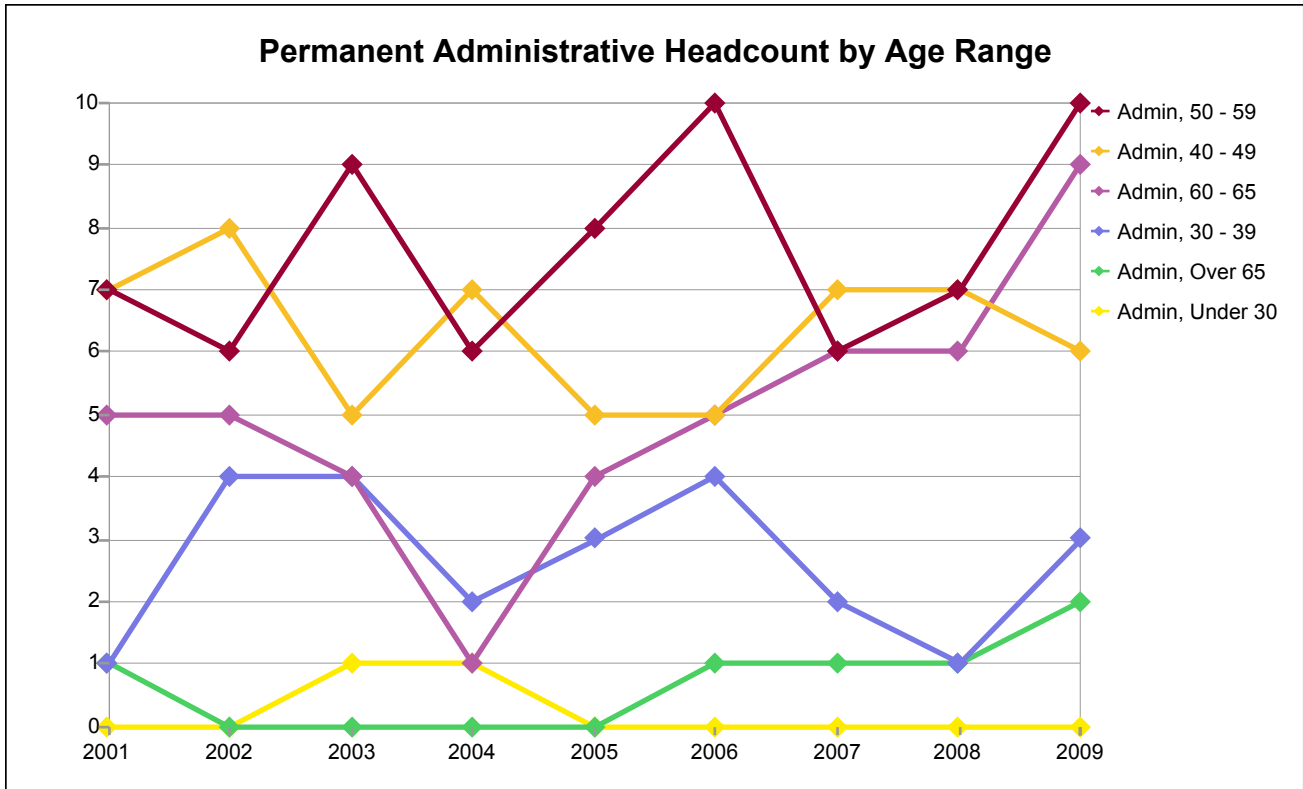
Ethnicity	2001	2002	2003	2004	2005	2006	2007	2008	2009
African-Am	7	8	6	6	5	7	7	7	11
Asian/PI	3	5	5	4	4	4	3	3	4
Filipino	0	0	0	0	0	1	1	1	1
Other/Unkwr	0	0	1	1	3	2	2	2	3
White	11	10	11	6	8	11	9	9	11
Total	21	23	23	17	20	25	22	22	30

Percentage Distribution of Permanent Administrators by Ethnicity

Ethnicity	2001	2002	2003	2004	2005	2006	2007	2008	2009
African-Am	33%	35%	26%	35%	25%	28%	32%	32%	37%
Asian/PI	14%	22%	22%	24%	20%	16%	14%	14%	13%
Filipino	0%	0%	0%	0%	0%	4%	5%	5%	3%
Other/Unkwr	0%	0%	4%	6%	15%	8%	9%	9%	10%
White	52%	43%	48%	35%	40%	44%	41%	41%	37%
Total	100%	100%	100%	100%	100%	100%	100%	100%	100%

Note: Due to data loss during the conversion to Peoplesoft, data for 2007 is estimated.

District Office



Permanent Administrative Headcount by Age Range

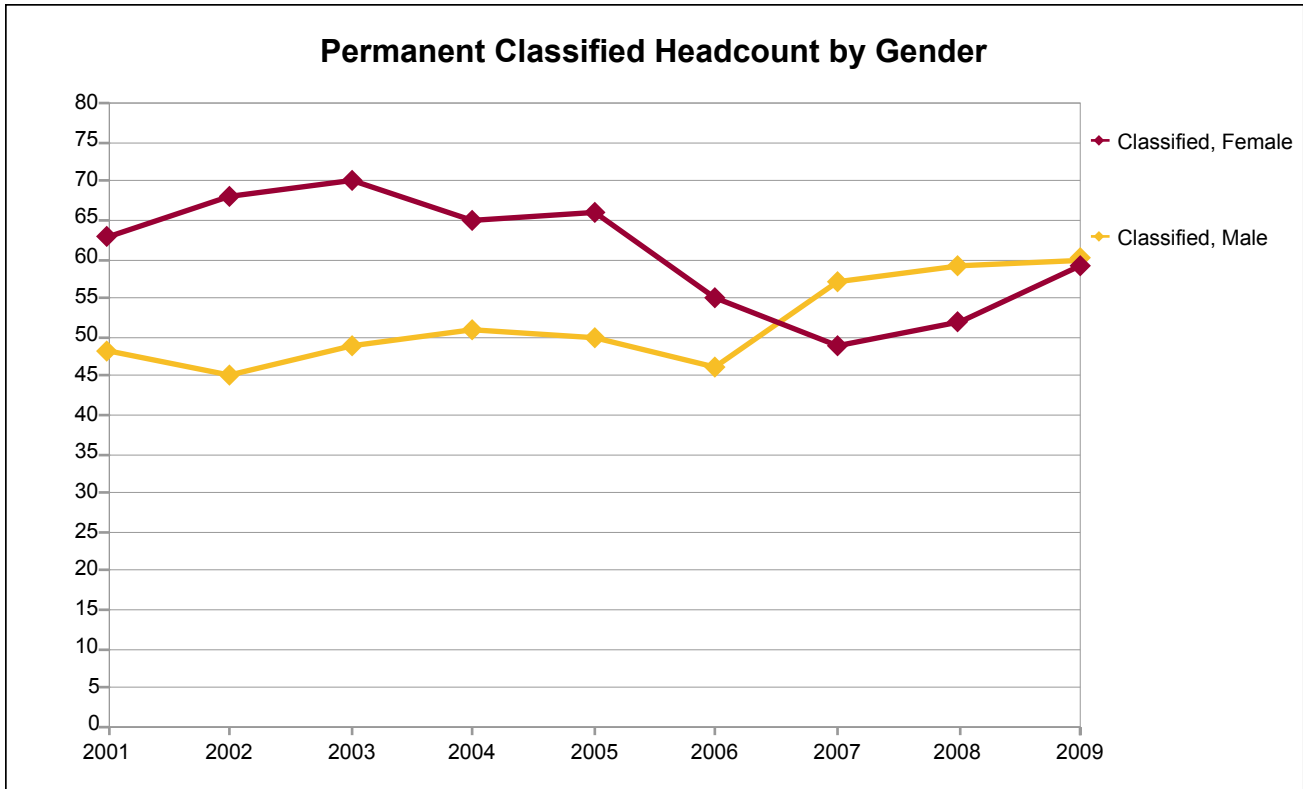
Age Grp	2001	2002	2003	2004	2005	2006	2007	2008	2009
Under 30	0	0	1	1	0	0	0	0	0
30 - 39	1	4	4	2	3	4	2	1	3
40 - 49	7	8	5	7	5	5	7	7	6
50 - 59	7	6	9	6	8	10	6	7	10
60 - 65	5	5	4	1	4	5	6	6	9
Over 65	1	0	0	0	0	1	1	1	2
Total	21	23	23	17	20	25	22	22	30

Percentage Distribution of Permanent Administrators by Age Range

Age Grp	2001	2002	2003	2004	2005	2006	2007	2008	2009
Under 30	0%	0%	4%	6%	0%	0%	0%	0%	0%
30 - 39	5%	17%	17%	12%	15%	16%	9%	5%	10%
40 - 49	33%	35%	22%	41%	25%	20%	32%	32%	20%
50 - 59	33%	26%	39%	35%	40%	40%	27%	32%	33%
60 - 65	24%	22%	17%	6%	20%	20%	27%	27%	30%
Over 65	5%	0%	0%	0%	0%	4%	5%	5%	7%
Total	100%	100%	100%	100%	100%	100%	100%	100%	100%

Note: Due to data loss during the conversion to Peoplesoft, data for 2007 is estimated.

District Office



Permanent Classified Headcount by Gender

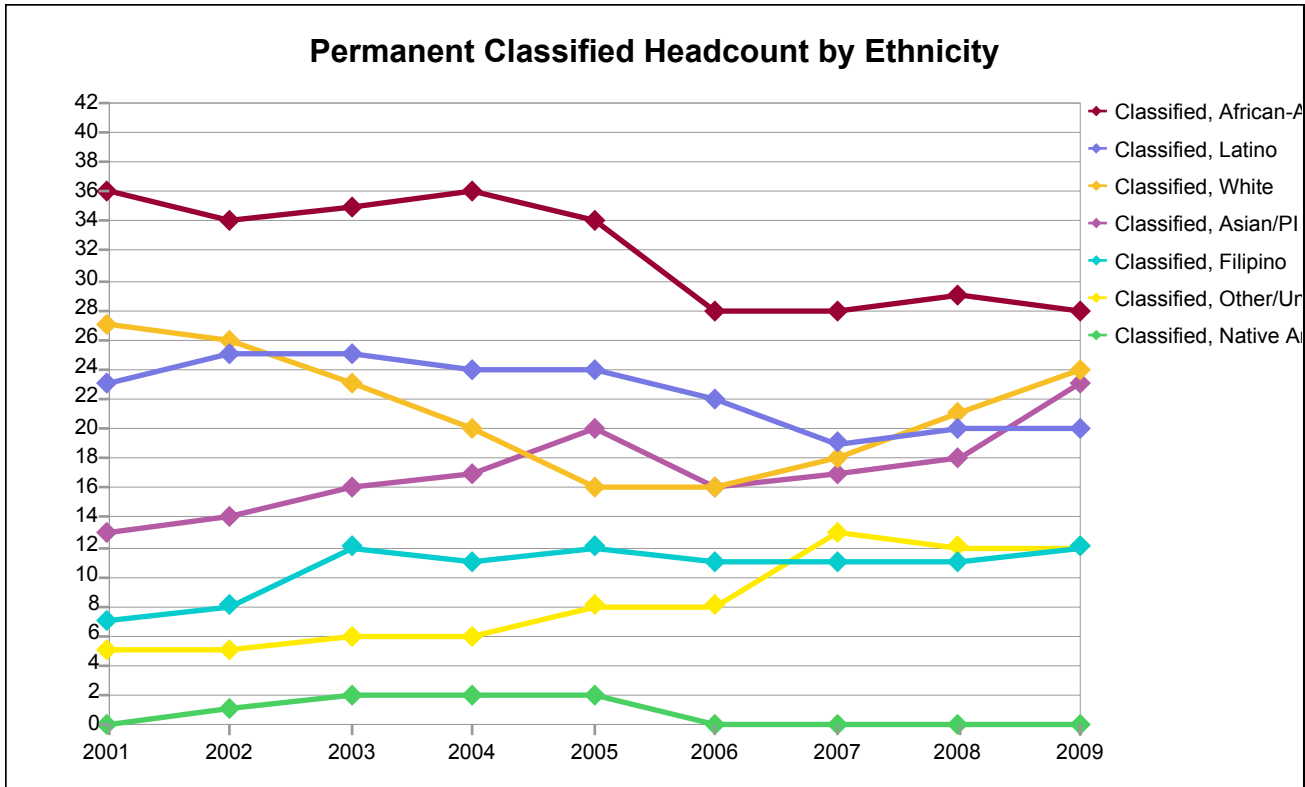
Gender	2001	2002	2003	2004	2005	2006	2007	2008	2009
Female	63	68	70	65	66	55	49	52	59
Male	48	45	49	51	50	46	57	59	60
Total	111	113	119	116	116	101	106	111	119

Percentage Distribution of Permanent Classified by Gender

Gender	2001	2002	2003	2004	2005	2006	2007	2008	2009
Female	57%	60%	59%	56%	57%	54%	46%	47%	50%
Male	43%	40%	41%	44%	43%	46%	54%	53%	50%
Total	100%	100%	100%	100%	100%	100%	100%	100%	100%

Note: Due to data loss during the conversion to Peoplesoft, data for 2007 is estimated.

District Office



Permanent Classified Headcount by Ethnicity

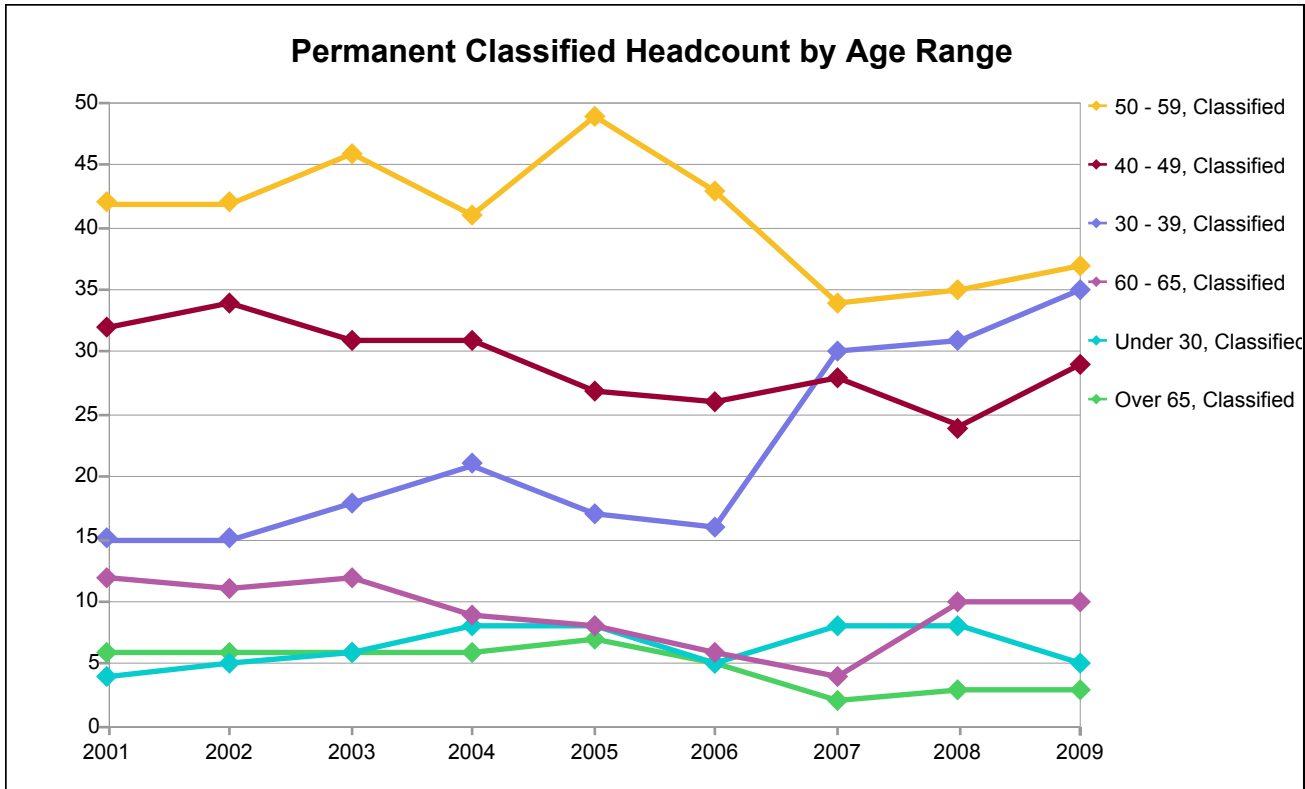
Ethnicity	2001	2002	2003	2004	2005	2006	2007	2008	2009
African-Am	36	34	35	36	34	28	28	29	28
Asian/PI	13	14	16	17	20	16	17	18	23
Filipino	7	8	12	11	12	11	11	11	12
Latino	23	25	25	24	24	22	19	20	20
Native Am	0	1	2	2	2	0	0	0	0
Other/Unkwr	5	5	6	6	8	8	13	12	12
White	27	26	23	20	16	16	18	21	24
Total	111	113	119	116	116	101	106	111	119

Percentage Distribution of Permanent Classified by Ethnicity

Ethnicity	2001	2002	2003	2004	2005	2006	2007	2008	2009
African-Am	32%	30%	29%	31%	29%	28%	26%	26%	24%
Asian/PI	12%	12%	13%	15%	17%	16%	16%	16%	19%
Filipino	6%	7%	10%	9%	10%	11%	10%	10%	10%
Latino	21%	22%	21%	21%	21%	22%	18%	18%	17%
Native Am	0%	1%	2%	2%	2%	0%	0%	0%	0%
Other/Unkwr	5%	4%	5%	5%	7%	8%	12%	11%	10%
White	24%	23%	19%	17%	14%	16%	17%	19%	20%
Total	100%	100%	100%	100%	100%	100%	100%	100%	100%

Note: Due to data loss during the conversion to Peoplesoft, data for 2007 is estimated.

District Office



Permanent Classified Headcount by Age Range

Age Grp	2001	2002	2003	2004	2005	2006	2007	2008	2009
Under 30	4	5	6	8	8	5	8	8	5
30 - 39	15	15	18	21	17	16	30	31	35
40 - 49	32	34	31	31	27	26	28	24	29
50 - 59	42	42	46	41	49	43	34	35	37
60 - 65	12	11	12	9	8	6	4	10	10
Over 65	6	6	6	6	7	5	2	3	3
Total	111	113	119	116	116	101	106	111	119

Percentage Distribution of Permanent Classified by Age Range

Age Grp	2001	2002	2003	2004	2005	2006	2007	2008	2009
Under 30	4%	4%	5%	7%	7%	5%	8%	7%	4%
30 - 39	14%	13%	15%	18%	15%	16%	28%	28%	29%
40 - 49	29%	30%	26%	27%	23%	26%	26%	22%	24%
50 - 59	38%	37%	39%	35%	42%	43%	32%	32%	31%
60 - 65	11%	10%	10%	8%	7%	6%	4%	9%	8%
Over 65	5%	5%	5%	5%	6%	5%	2%	3%	3%
Total	100%	100%	100%	100%	100%	100%	100%	100%	100%

Note: Due to data loss during the conversion to Peoplesoft, data for 2007 is estimated.