



# Peralta Facts

## Employee Statistics

District Office

February 2011

Peralta Community College District  
Office of Institutional Research

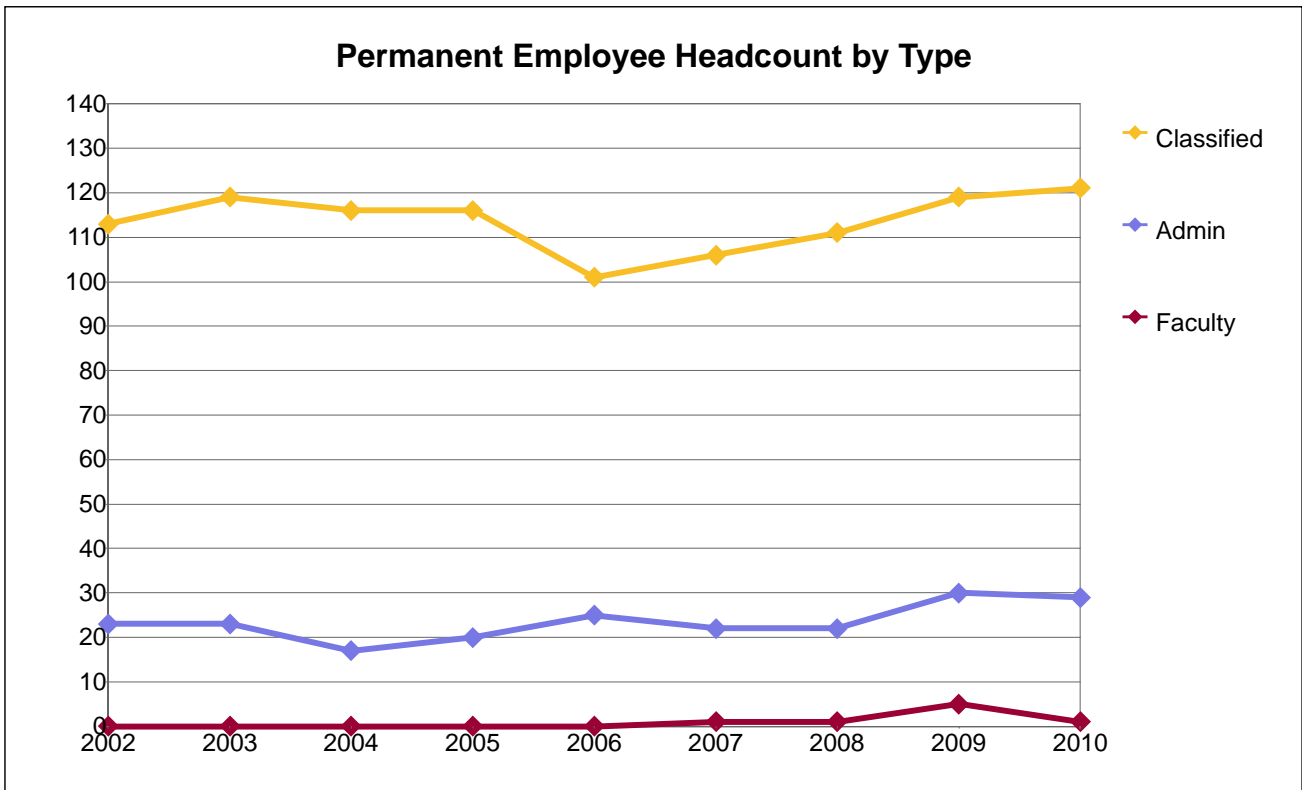
# **Peralta Facts Employee Statistics**

## **Peralta Community College District**

### **Table of Contents**

Permanent Employee Headcount by Type and EEO6 Occupation .....	1
Permanent & Temporary Employee FTE by Assignment and EEO6 Occupation .....	2
Permanent Administrative Headcount by Gender.....	3
Permanent Administrative Headcount by Ethnicity.....	4
Permanent Administrative Headcount by Age Range .....	5
Permanent Classified Headcount by Gender .....	6
Permanent Classified Headcount by Ethnicity.....	7
Permanent Classified Headcount by Age Range .....	8

**Central Services**

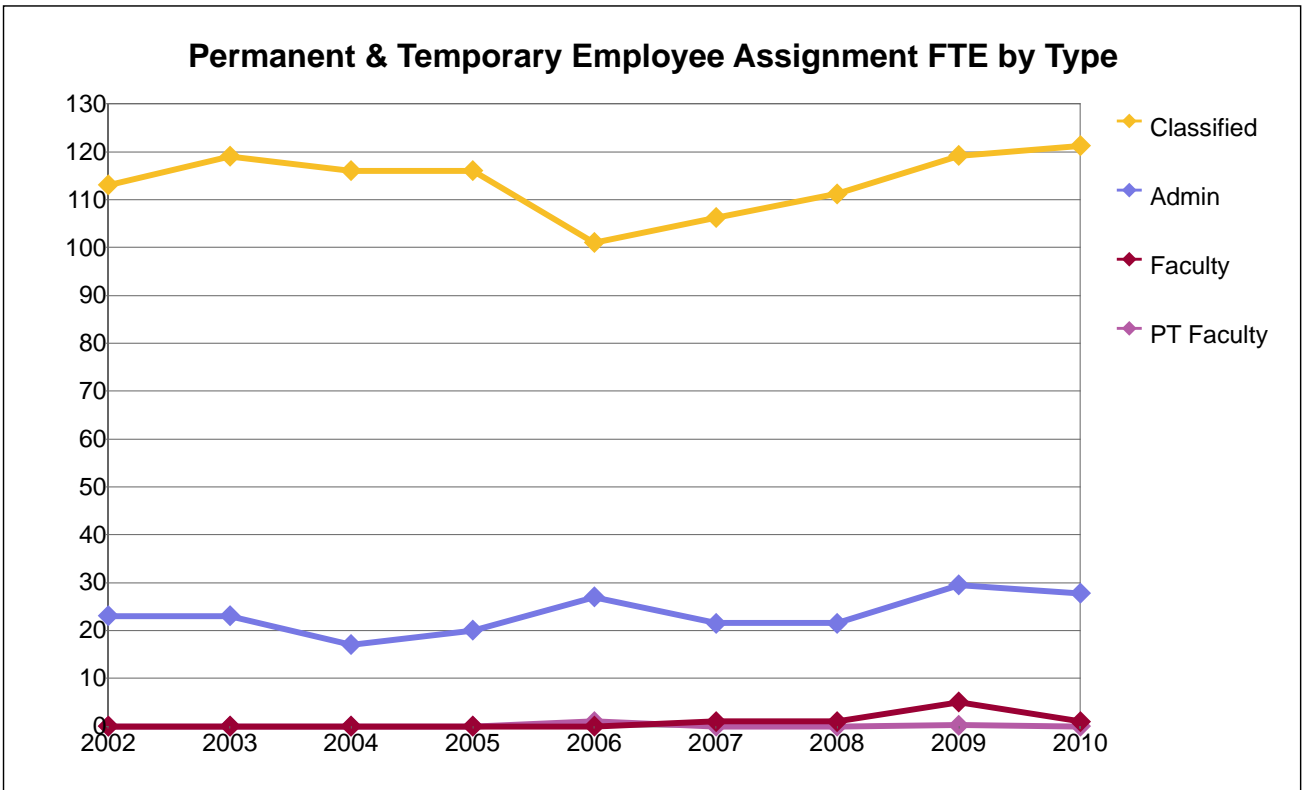


**Permanent Employee Headcount by Type and EEO6 Occupation**

Emp Type	EEO6 Occ2	2002	2003	2004	2005	2006	2007	2008	2009	2010
Admin	Admin	23	23	17	20	25	22	22	30	29
Faculty	Faculty						1	1	5	1
Classified	Professional	34	36	32	35	29	27	26	25	26
	Clerical	25	24	27	26	20	19	18	19	19
	Technical	22	26	23	23	23	29	35	41	45
	Skilled	15	15	14	16	15	15	15	15	15
	Maintenance	17	18	20	16	14	16	17	19	16
	All Classified		113	119	116	116	101	106	111	119
<b>Total</b>		<b>136</b>	<b>142</b>	<b>133</b>	<b>136</b>	<b>126</b>	<b>129</b>	<b>134</b>	<b>154</b>	<b>151</b>

Note: Due to data loss during the conversion to Peoplesoft, data for 2007 is estimated.

**Central Services**

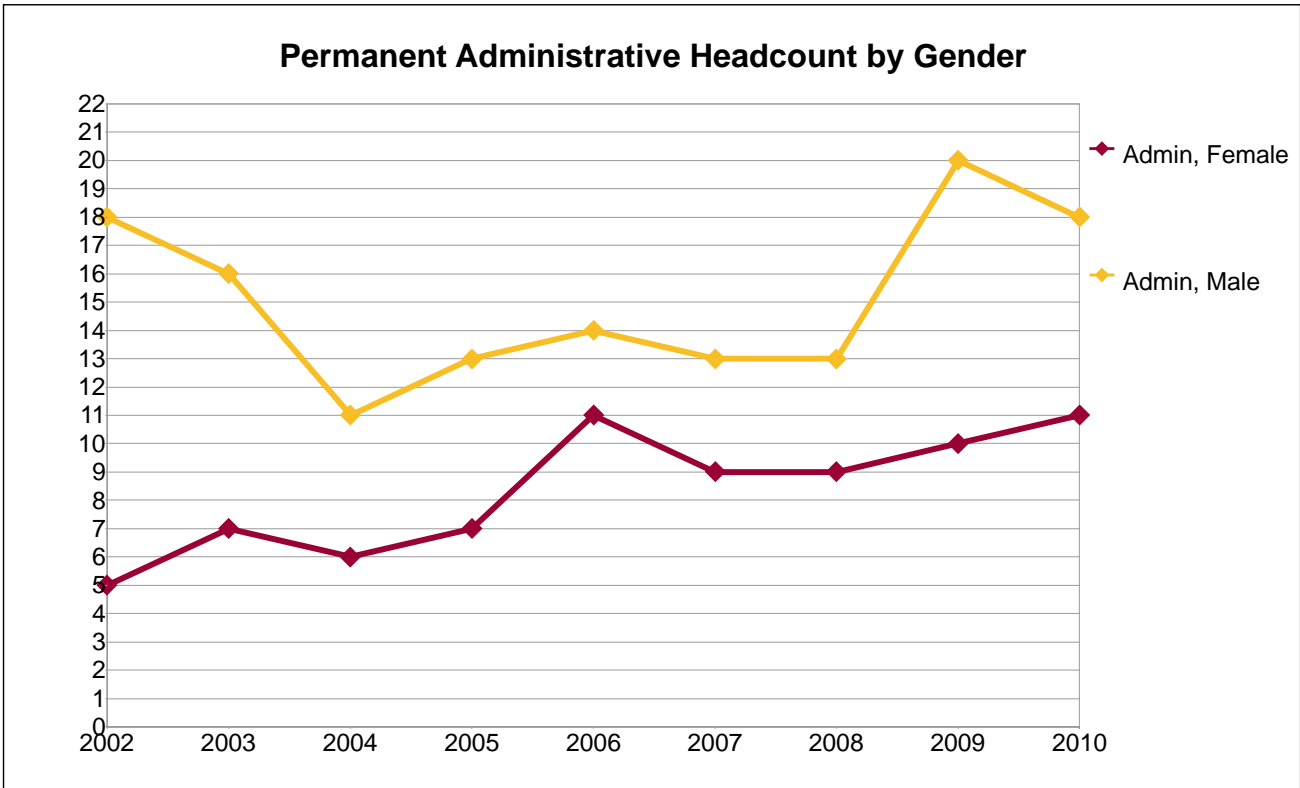


**Permanent & Temporary Assignment FTE by Type and EEO6 Occupation**

Emp Type	EEO6 Occ2	2002	2003	2004	2005	2006	2007	2008	2009	2010
Admin	Admin	23.0	23.0	17.0	20.0	27.0	21.5	21.5	29.5	27.8
Faculty	Faculty	0.0	0.0	0.0	0.0	0.0	1.0	1.0	5.0	1.0
	PT Faculty	0.0	0.0	0.0	0.0	1.0	0.0	0.0	0.2	0.0
	Sub Total	0.0	0.0	0.0	0.0	1.0	1.0	1.0	5.2	1.0
Classified	Professional	34.0	36.0	32.0	35.0	29.0	27.2	26.2	25.2	26.2
	Clerical	25.0	24.0	27.0	26.0	20.0	19.0	18.0	19.0	19.0
	Technical	22.0	26.0	23.0	23.0	23.0	29.0	35.0	41.0	45.0
	Skilled	15.0	15.0	14.0	16.0	15.0	15.0	15.0	15.0	15.0
	Maintenance	17.0	18.0	20.0	16.0	14.0	16.0	17.0	19.0	16.0
	Sub Total	113.0	119.0	116.0	116.0	101.0	106.2	111.2	119.2	121.2
<b>Total</b>		<b>136.0</b>	<b>142.0</b>	<b>133.0</b>	<b>136.0</b>	<b>129.0</b>	<b>128.7</b>	<b>133.7</b>	<b>153.9</b>	<b>150.0</b>

Note: Due to data loss during the conversion to Peoplesoft, data for 2007 is estimated.

**Central Services**



**Permanent Administrative Headcount by Gender**

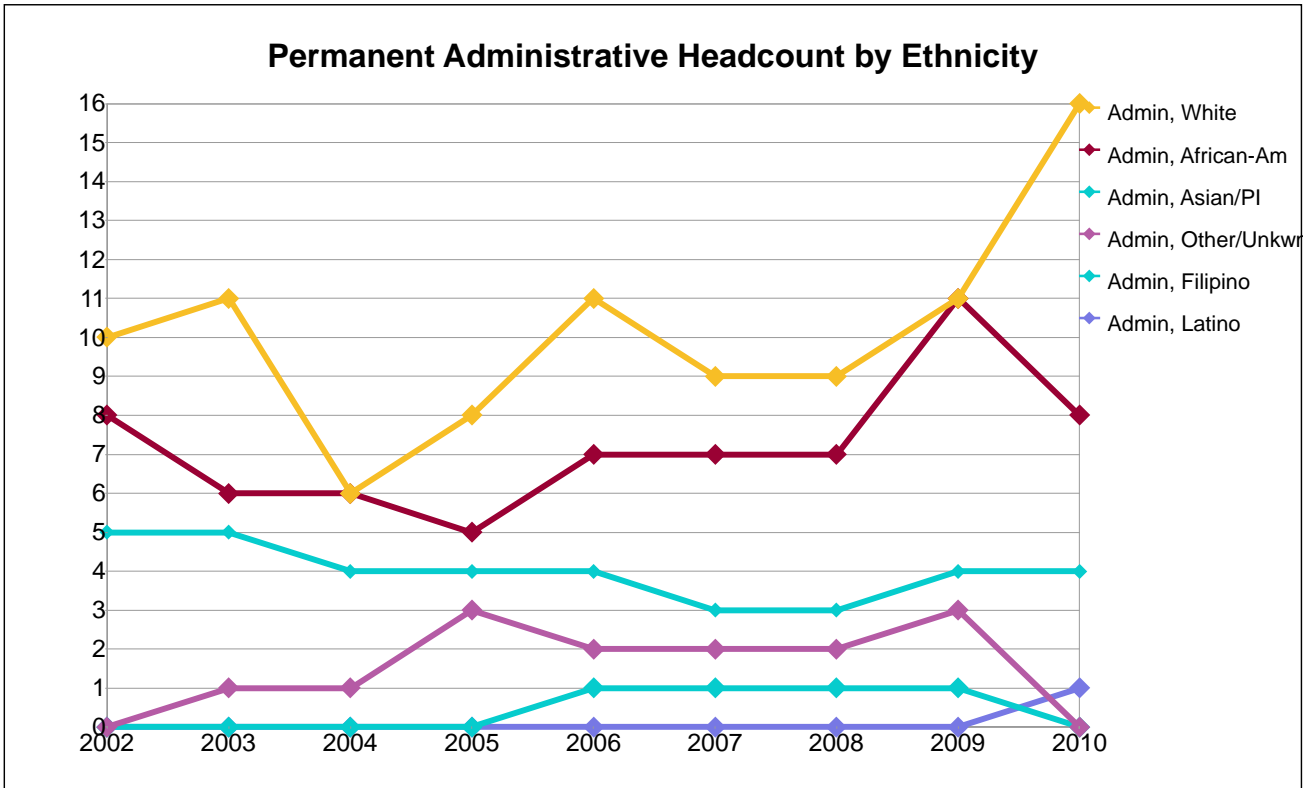
Gender	2002	2003	2004	2005	2006	2007	2008	2009	2010
Female	5	7	6	7	11	9	9	10	11
Male	18	16	11	13	14	13	13	20	18
Total	23	23	17	20	25	22	22	30	29

**Percentage Distribution of Permanent Administrators by Gender**

Gender	2002	2003	2004	2005	2006	2007	2008	2009	2010
Female	22%	30%	35%	35%	44%	41%	41%	33%	38%
Male	78%	70%	65%	65%	56%	59%	59%	67%	62%
Total	100%	100%	100%	100%	100%	100%	100%	100%	100%

Note: Due to data loss during the conversion to Peoplesoft, data for 2007 is estimated.

**Central Services**



**Permanent Administrative Headcount by Ethnicity**

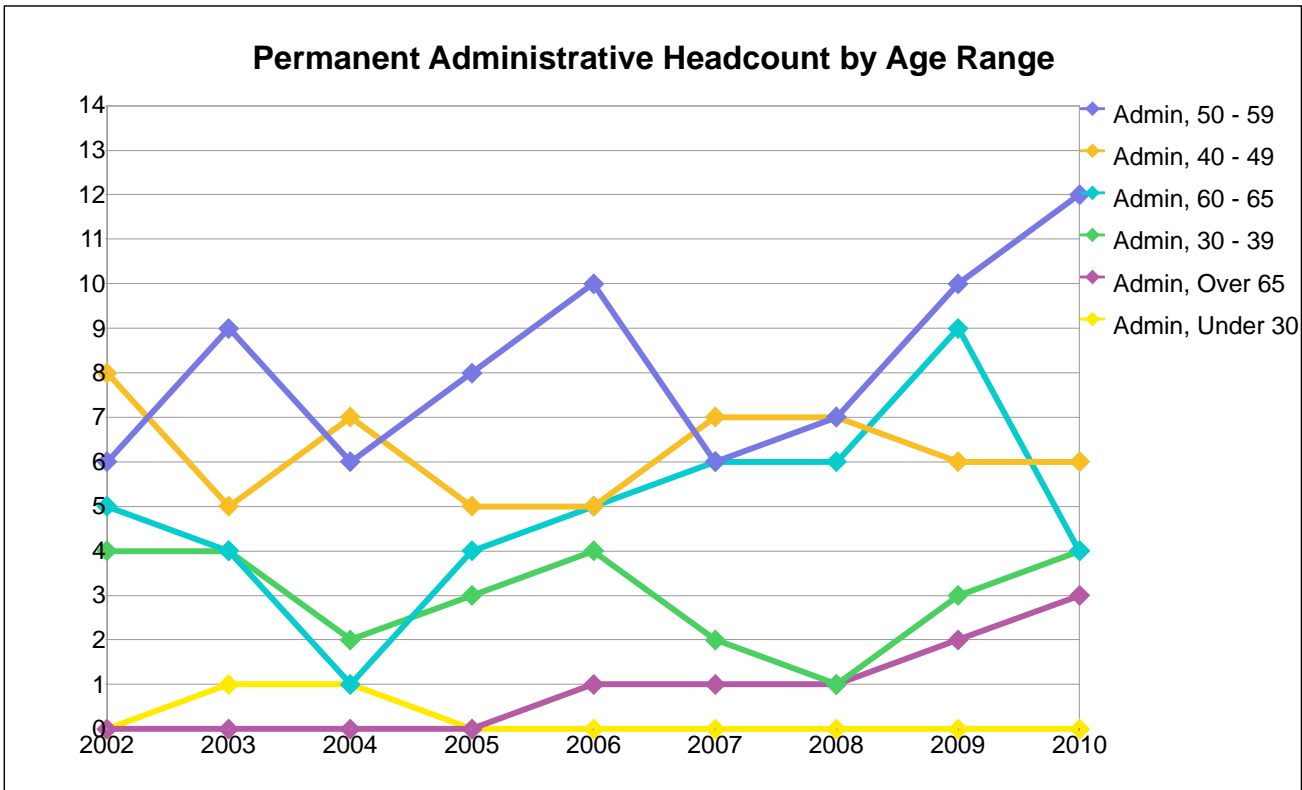
Ethnicity	2002	2003	2004	2005	2006	2007	2008	2009	2010
African-Am	8	6	6	5	7	7	7	11	8
Asian/PI	5	5	4	4	4	3	3	4	4
Filipino	0	0	0	0	1	1	1	1	0
Latino	0	0	0	0	0	0	0	0	1
Other/Unkwr	0	1	1	3	2	2	2	3	0
White	10	11	6	8	11	9	9	11	16
<b>Total</b>	<b>23</b>	<b>23</b>	<b>17</b>	<b>20</b>	<b>25</b>	<b>22</b>	<b>22</b>	<b>30</b>	<b>29</b>

**Percentage Distribution of Permanent Administrators by Ethnicity**

Ethnicity	2002	2003	2004	2005	2006	2007	2008	2009	2010
African-Am	35%	26%	35%	25%	28%	32%	32%	37%	28%
Asian/PI	22%	22%	24%	20%	16%	14%	14%	13%	14%
Filipino	0%	0%	0%	0%	4%	5%	5%	3%	0%
Latino	0%	0%	0%	0%	0%	0%	0%	0%	3%
Other/Unkwr	0%	4%	6%	15%	8%	9%	9%	10%	0%
White	43%	48%	35%	40%	44%	41%	41%	37%	55%
<b>Total</b>	<b>100%</b>	<b>100%</b>	<b>100%</b>	<b>100%</b>	<b>100%</b>	<b>100%</b>	<b>100%</b>	<b>100%</b>	<b>100%</b>

Note: Due to data loss during the conversion to Peoplesoft, data for 2007 is estimated.

**Central Services**



**Permanent Administrative Headcount by Age Range**

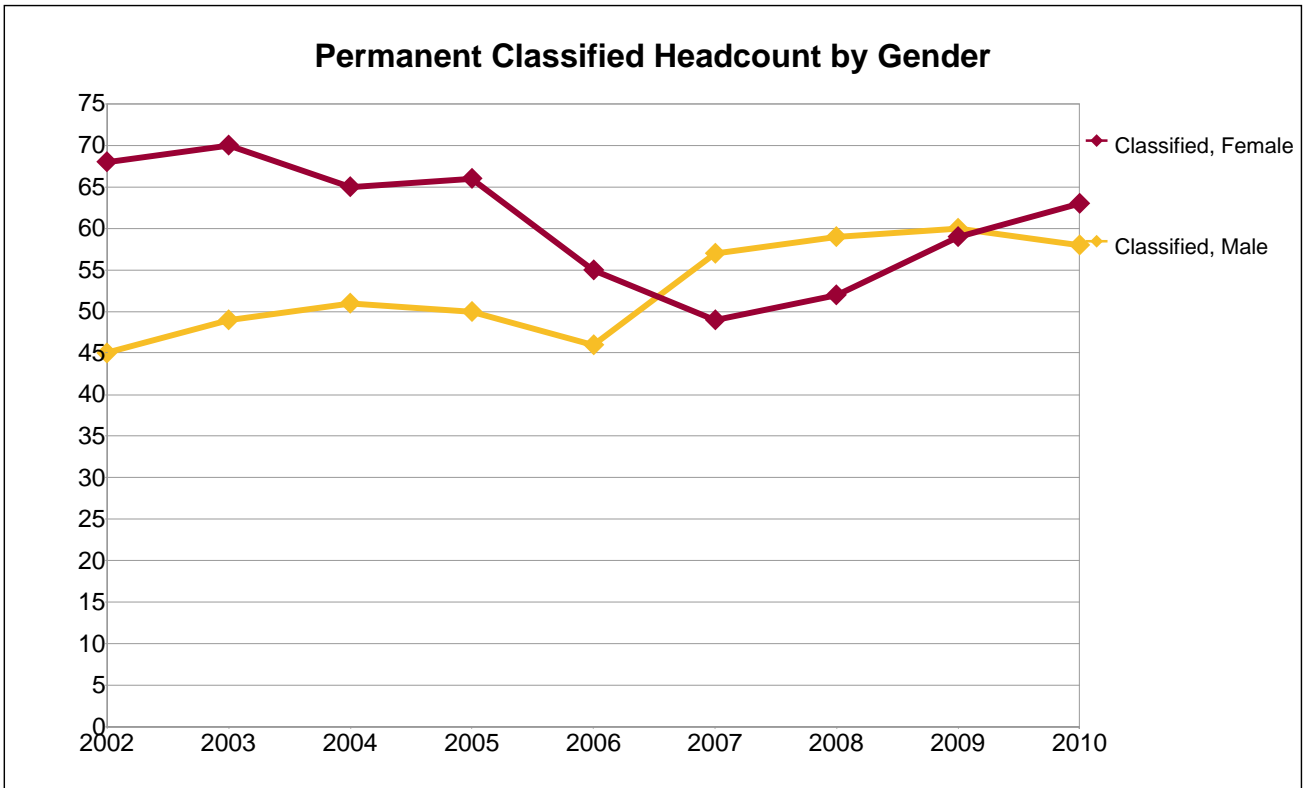
Age Grp	2002	2003	2004	2005	2006	2007	2008	2009	2010
30 - 39	4	4	2	3	4	2	1	3	4
40 - 49	8	5	7	5	5	7	7	6	6
50 - 59	6	9	6	8	10	6	7	10	12
60 - 65	5	4	1	4	5	6	6	9	4
Over 65	0	0	0	0	1	1	1	2	3
Under 30	0	1	1	0	0	0	0	0	0
<b>Total</b>	<b>23</b>	<b>23</b>	<b>17</b>	<b>20</b>	<b>25</b>	<b>22</b>	<b>22</b>	<b>30</b>	<b>29</b>

**Percentage Distribution of Permanent Administrators by Age Range**

Age Grp	2002	2003	2004	2005	2006	2007	2008	2009	2010
30 - 39	17%	17%	12%	15%	16%	9%	5%	10%	14%
40 - 49	35%	22%	41%	25%	20%	32%	32%	20%	21%
50 - 59	26%	39%	35%	40%	40%	27%	32%	33%	41%
60 - 65	22%	17%	6%	20%	20%	27%	27%	30%	14%
Over 65	0%	0%	0%	0%	4%	5%	5%	7%	10%
Under 30	0%	4%	6%	0%	0%	0%	0%	0%	0%
<b>Total</b>	<b>100%</b>	<b>100%</b>	<b>100%</b>	<b>100%</b>	<b>100%</b>	<b>100%</b>	<b>100%</b>	<b>100%</b>	<b>100%</b>

Note: Due to data loss during the conversion to Peoplesoft, data for 2007 is estimated.

**Central Services**



**Permanent Classified Headcount by Gender**

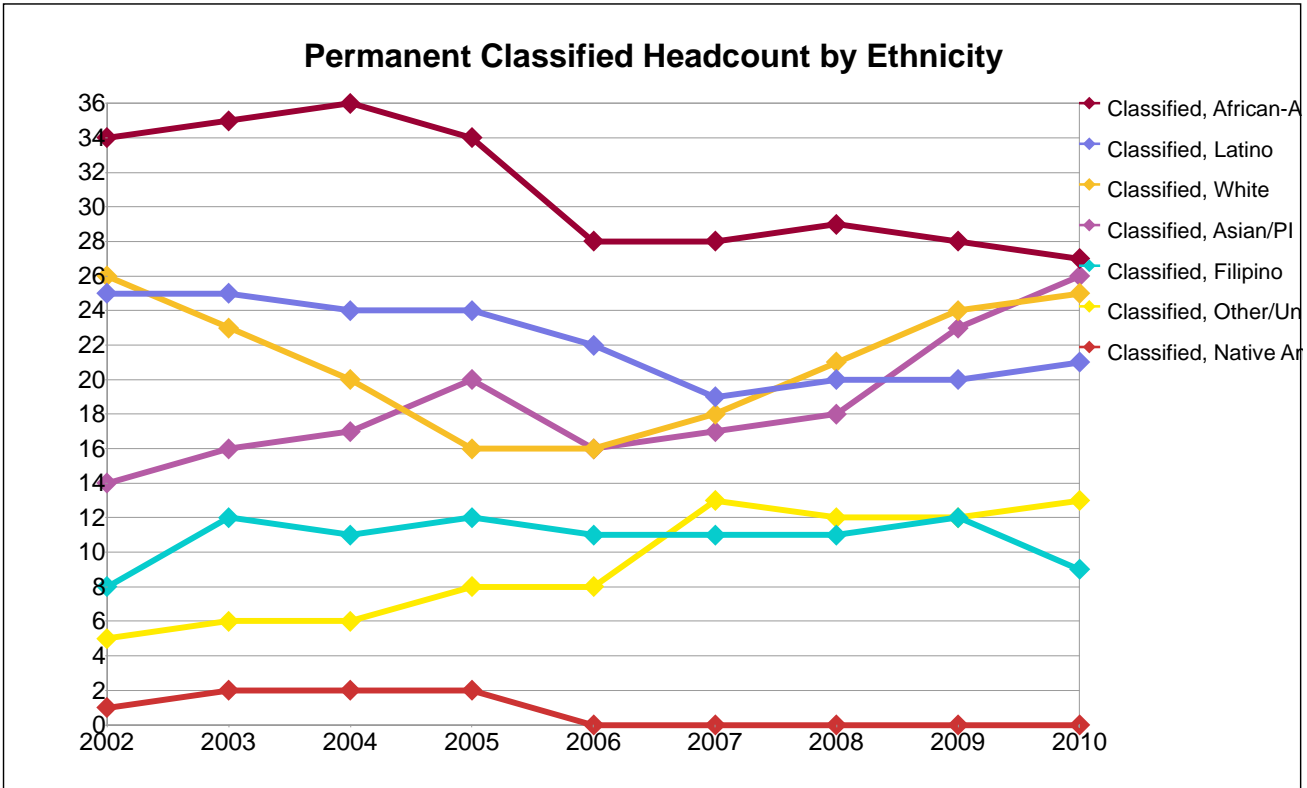
Gender	2002	2003	2004	2005	2006	2007	2008	2009	2010
Female	68	70	65	66	55	49	52	59	63
Male	45	49	51	50	46	57	59	60	58
Total	113	119	116	116	101	106	111	119	121

**Percentage Distribution of Permanent Classified by Gender**

Gender	2002	2003	2004	2005	2006	2007	2008	2009	2010
Female	60%	59%	56%	57%	54%	46%	47%	50%	52%
Male	40%	41%	44%	43%	46%	54%	53%	50%	48%
Total	100%	100%	100%	100%	100%	100%	100%	100%	100%

Note: Due to data loss during the conversion to Peoplesoft, data for 2007 is estimated.

**Central Services**



**Permanent Classified Headcount by Ethnicity**

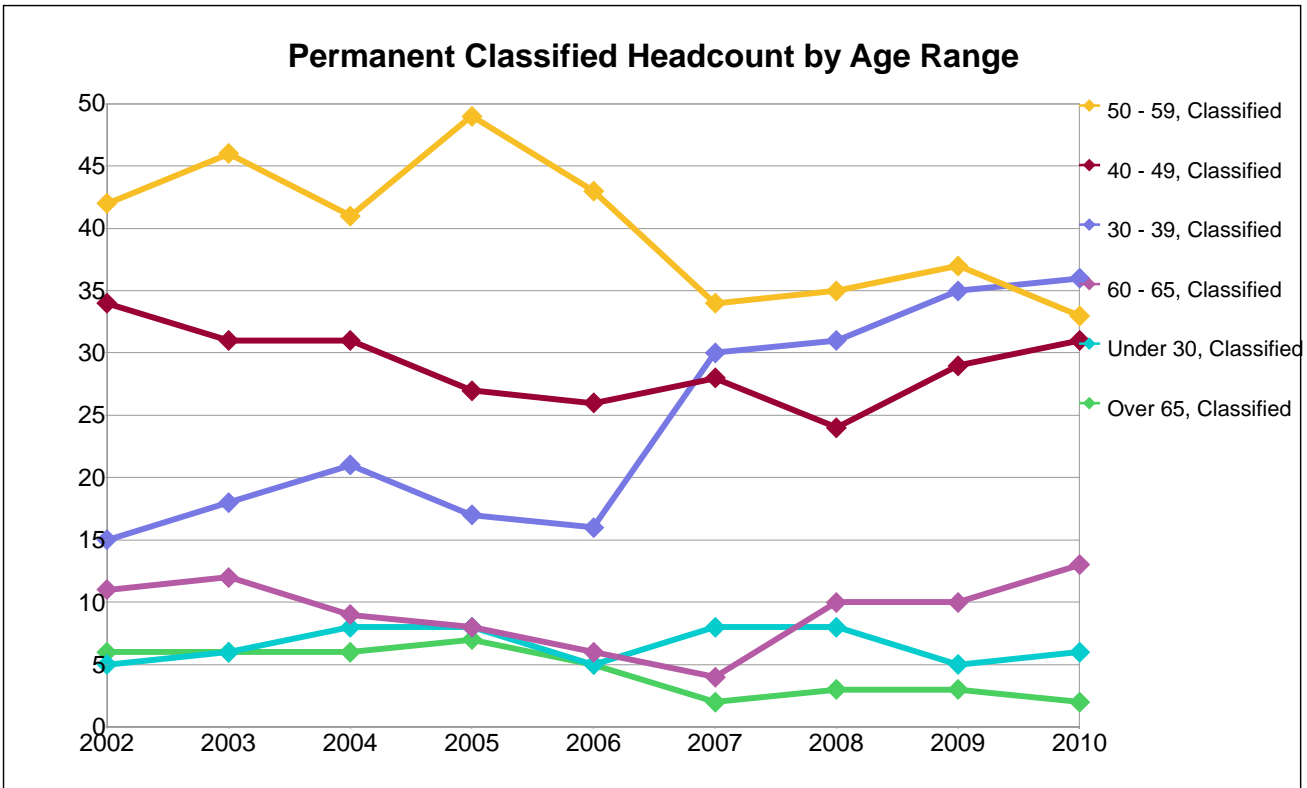
Ethnicity	2002	2003	2004	2005	2006	2007	2008	2009	2010
African-Am	34	35	36	34	28	28	29	28	27
Asian/PI	14	16	17	20	16	17	18	23	26
Filipino	8	12	11	12	11	11	11	12	9
Latino	25	25	24	24	22	19	20	20	21
Native Am	1	2	2	2	0	0	0	0	0
Other/Unkwn	5	6	6	8	8	13	12	12	13
White	26	23	20	16	16	18	21	24	25
<b>Total</b>	<b>113</b>	<b>119</b>	<b>116</b>	<b>116</b>	<b>101</b>	<b>106</b>	<b>111</b>	<b>119</b>	<b>121</b>

**Percentage Distribution of Permanent Classified by Ethnicity**

Ethnicity	2002	2003	2004	2005	2006	2007	2008	2009	2010
African-Am	30%	29%	31%	29%	28%	26%	26%	24%	22%
Asian/PI	12%	13%	15%	17%	16%	16%	16%	19%	21%
Filipino	7%	10%	9%	10%	11%	10%	10%	10%	7%
Latino	22%	21%	21%	21%	22%	18%	18%	17%	17%
Native Am	1%	2%	2%	2%	0%	0%	0%	0%	0%
Other/Unkwn	4%	5%	5%	7%	8%	12%	11%	10%	11%
White	23%	19%	17%	14%	16%	17%	19%	20%	21%
<b>Total</b>	<b>100%</b>	<b>100%</b>	<b>100%</b>	<b>100%</b>	<b>100%</b>	<b>100%</b>	<b>100%</b>	<b>100%</b>	<b>100%</b>

Note: Due to data loss during the conversion to Peoplesoft, data for 2007 is estimated.

**Central Services**



**Permanent Classified Headcount by Age Range**

Age Grp	2002	2003	2004	2005	2006	2007	2008	2009	2010
Under 30	5	6	8	8	5	8	8	5	6
30 - 39	15	18	21	17	16	30	31	35	36
40 - 49	34	31	31	27	26	28	24	29	31
50 - 59	42	46	41	49	43	34	35	37	33
60 - 65	11	12	9	8	6	4	10	10	13
Over 65	6	6	6	7	5	2	3	3	2
<b>Total</b>	<b>113</b>	<b>119</b>	<b>116</b>	<b>116</b>	<b>101</b>	<b>106</b>	<b>111</b>	<b>119</b>	<b>121</b>

**Percentage Distribution of Permanent Classified by Age Range**

Age Grp	2002	2003	2004	2005	2006	2007	2008	2009	2010
Under 30	4%	5%	7%	7%	5%	8%	7%	4%	5%
30 - 39	13%	15%	18%	15%	16%	28%	28%	29%	30%
40 - 49	30%	26%	27%	23%	26%	26%	22%	24%	26%
50 - 59	37%	39%	35%	42%	43%	32%	32%	31%	27%
60 - 65	10%	10%	8%	7%	6%	4%	9%	8%	11%
Over 65	5%	5%	5%	6%	5%	2%	3%	3%	2%
<b>Total</b>	<b>100%</b>	<b>100%</b>	<b>100%</b>	<b>100%</b>	<b>100%</b>	<b>100%</b>	<b>100%</b>	<b>100%</b>	<b>100%</b>

Note: Due to data loss during the conversion to Peoplesoft, data for 2007 is estimated.