



Peralta Facts

Employee Statistics

Laney College

April 2010

Peralta Community College District
Office of Institutional Research

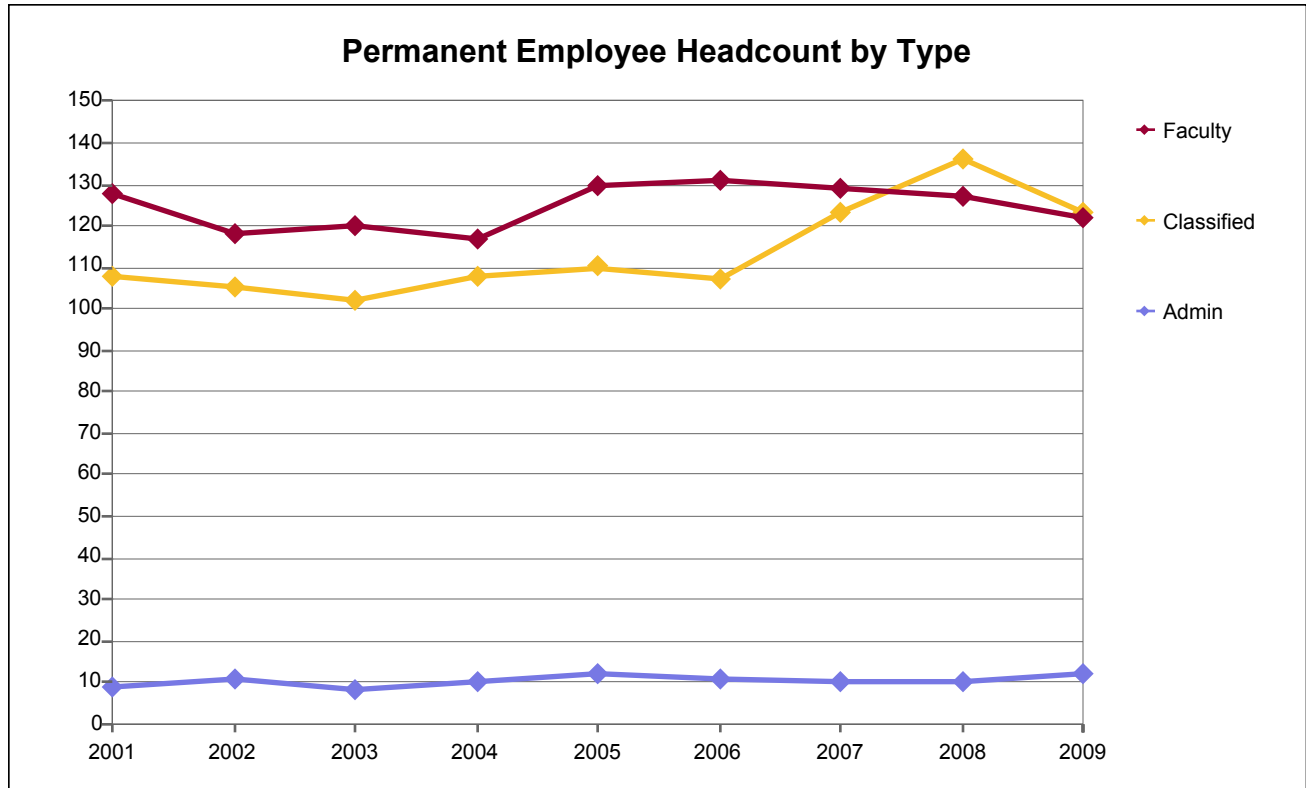
Peralta Facts Employee Statistics

Peralta Community College District

Table of Contents

Permanent Employee Headcount by Type and EEO6 Occupation	1
Permanent & Temporary Employee FTE by Assignment and EEO6 Occupation	2
Permanent Administrative Headcount by Gender.....	3
Permanent Administrative Headcount by Ethnicity.....	4
Permanent Administrative Headcount by Age Range	5
Permanent Faculty Headcount by Gender	6
Permanent Faculty Headcount by Ethnicity.....	7
Permanent Faculty Headcount by Age Range	8
Permanent Classified Headcount by Gender	9
Permanent Classified Headcount by Ethnicity.....	10
Permanent Classified Headcount by Age Range	11

Laney College

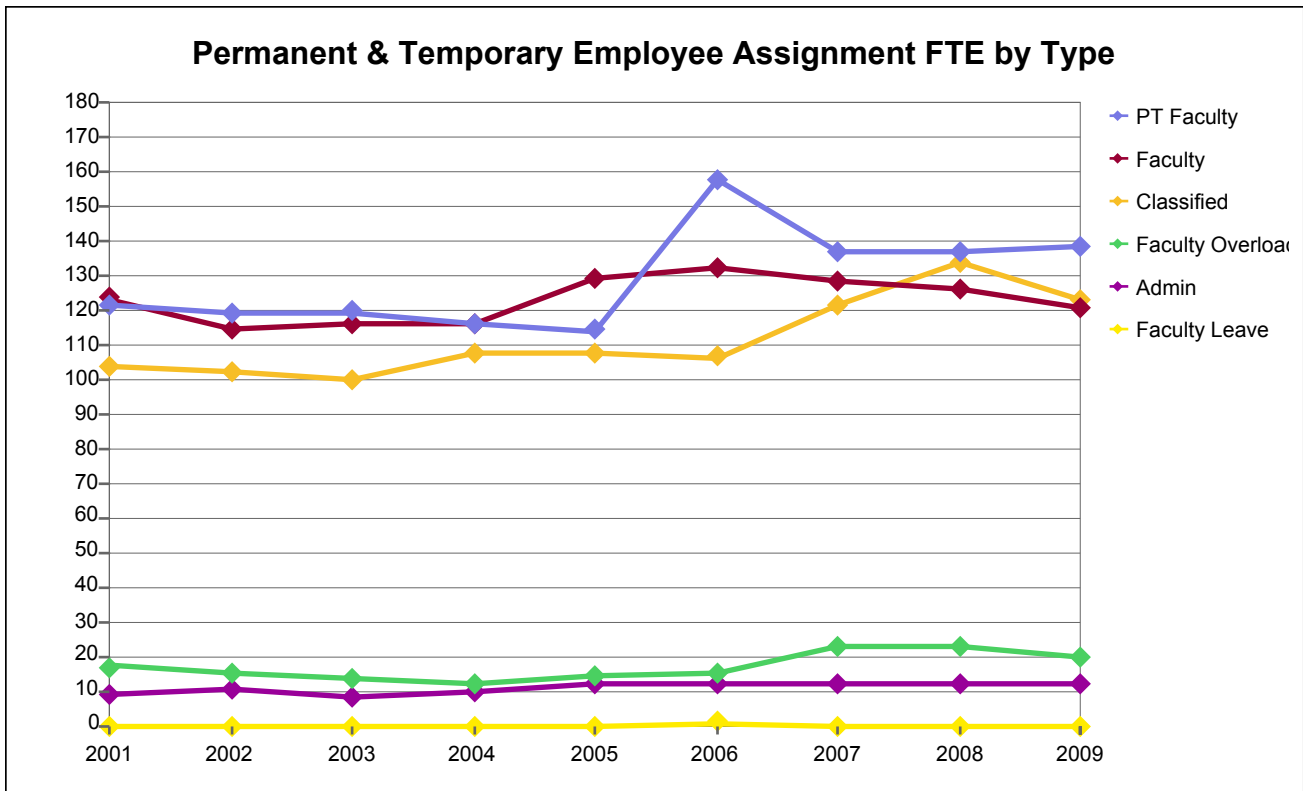


Permanent Employee Headcount by Type and EEO6 Occupation

Emp Type	EEO6 Occ2	2001	2002	2003	2004	2005	2006	2007	2008	2009
Admin	Admin	9	11	8	10	12	11	10	10	12
Faculty	Faculty	128	118	120	117	130	131	129	127	122
Classified	Professional	29	28	27	27	26	24	26	29	25
	Clerical	26	26	28	30	30	32	34	36	33
	Technical	31	30	26	26	25	24	34	42	40
	Skilled					1	1	1	1	1
	Maintenance	22	21	21	25	28	26	28	28	24
	Tot Classified	108	105	102	108	110	107	123	136	123
Total		245	234	230	235	252	249	262	273	257

Note: Due to data loss during the conversion to Peoplesoft, data for 2007 is estimated.

Laney College

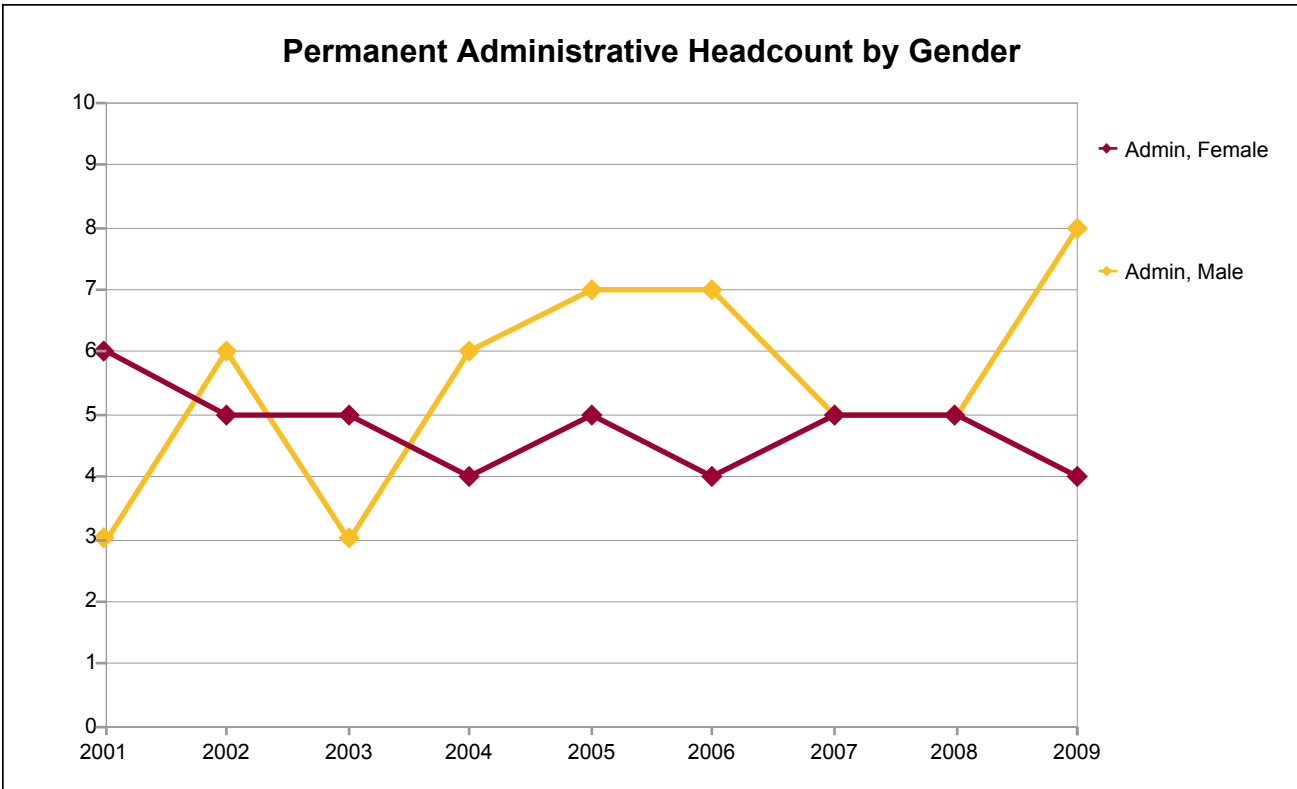


Permanent & Temporary Assignment FTE by Type and EEO6 Occupation

Emp Type3	Emp Type3	2001	2002	2003	2004	2005	2006	2007	2008	2009
Admin	Admin	9.0	10.4	8.0	10.0	12.0	12.2	12.2	12.2	12.0
	Subtotal	9.0	10.4	8.0	10.0	12.0	12.2	12.2	12.2	12.0
Faculty	Faculty	123.5	115.1	116.3	116.3	129.1	132.5	128.4	126.4	120.8
	Faculty Leave	0.0	0.0	0.0	0.0	0.0	0.9	0.0	0.0	0.0
	Faculty Overload	17.1	14.9	13.4	12.3	14.1	15.4	23.0	23.0	20.1
	PT Faculty	121.4	119.0	119.7	116.4	114.3	157.7	137.0	137.0	138.8
Subtotal		262.0	248.9	249.4	244.9	257.4	306.4	288.5	286.5	279.7
Classified	Clerical	25.2	26.0	26.2	29.2	28.4	32.0	33.3	35.3	32.8
	Maintenance	22.0	21.0	21.0	25.0	28.0	25.4	26.3	26.3	23.7
	Professional	29.0	27.7	26.8	27.8	26.6	25.1	26.2	29.2	25.1
	Skilled	0.0	0.0	0.0	0.0	0.5	0.4	1.3	1.3	1.5
	Technical	27.5	27.8	26.0	25.5	24.5	23.8	34.3	42.2	39.9
Subtotal		103.7	102.5	99.9	107.5	108.0	106.7	121.4	134.3	123.0
Total		374.7	361.8	357.2	362.4	377.4	425.2	422.1	433.0	414.7

Note: Due to data loss during the conversion to Peoplesoft, data for 2007 is estimated.

Laney College



Permanent Administrative Headcount by Gender

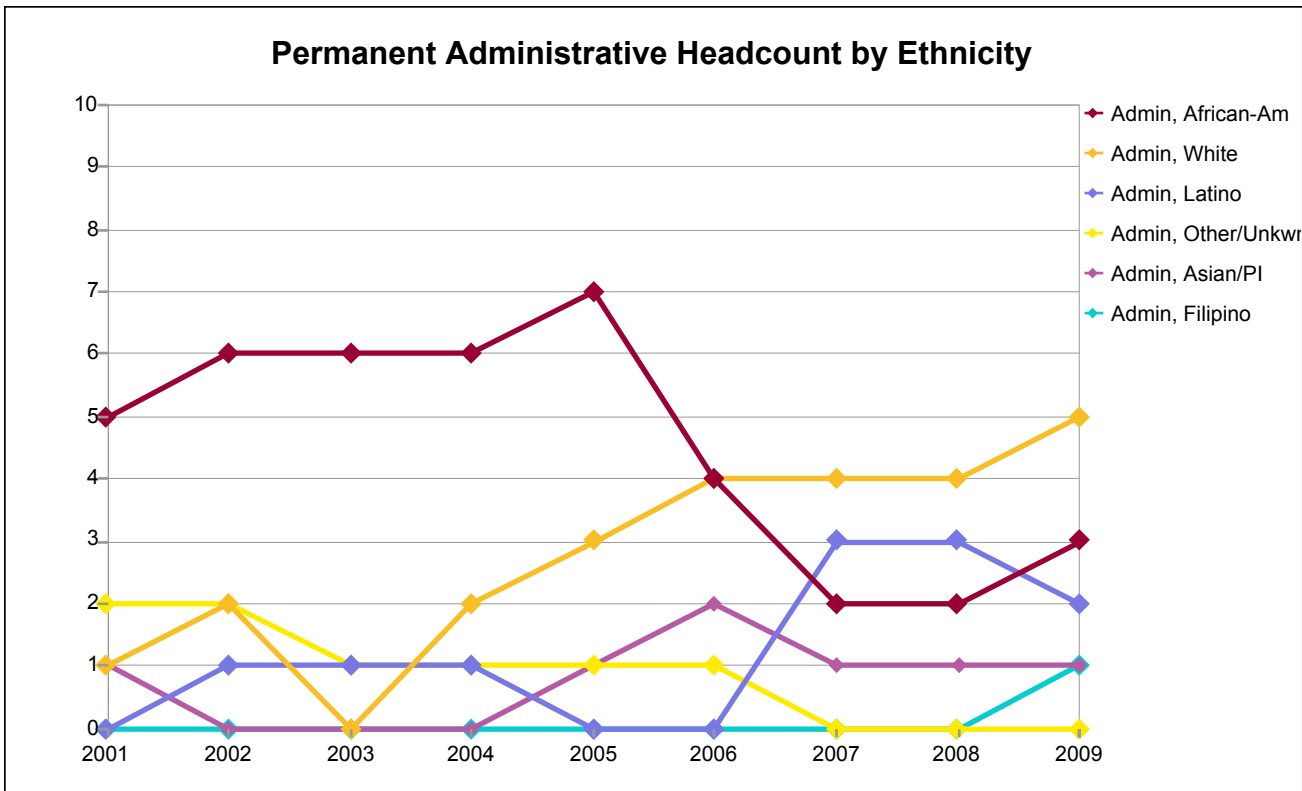
Gender	2001	2002	2003	2004	2005	2006	2007	2008	2009
Female	6	5	5	4	5	4	5	5	4
Male	3	6	3	6	7	7	5	5	8
Total	9	11	8	10	12	11	10	10	12

Percentage Distribution of Permanent Administrators by Gender

Gender	2001	2002	2003	2004	2005	2006	2007	2008	2009
Female	67%	45%	63%	40%	42%	36%	50%	50%	33%
Male	33%	55%	38%	60%	58%	64%	50%	50%	67%
Total	100%	100%	100%	100%	100%	100%	100%	100%	100%

Note: Due to data loss during the conversion to Peoplesoft, data for 2007 is estimated.

Laney College



Permanent Administrative Headcount by Ethnicity

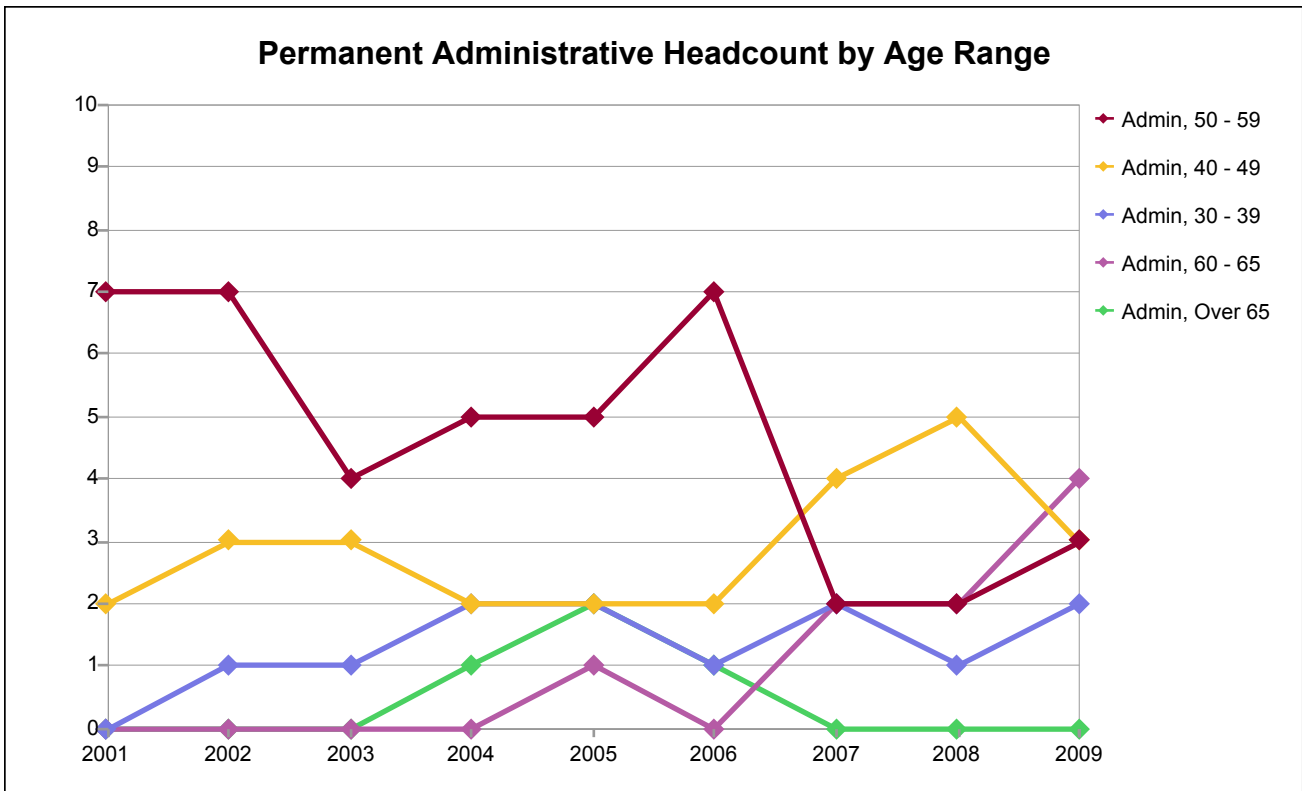
Ethnicity	2001	2002	2003	2004	2005	2006	2007	2008	2009
African-Am	5	6	6	6	7	4	2	2	3
Asian/PI	1	0	0	0	1	2	1	1	1
Filipino	0	0	0	0	0	0	0	0	1
Latino	0	1	1	1	0	0	3	3	2
Other/Unkw	2	2	1	1	1	1	0	0	0
White	1	2	0	2	3	4	4	4	5
Total	9	11	8	10	12	11	10	10	12

Percentage Distribution of Permanent Administrators by Ethnicity

Ethnicity	2001	2002	2003	2004	2005	2006	2007	2008	2009
African-Am	56%	55%	75%	60%	58%	36%	20%	20%	25%
Asian/PI	11%	0%	0%	0%	8%	18%	10%	10%	8%
Filipino	0%	0%	0%	0%	0%	0%	0%	0%	8%
Latino	0%	9%	13%	10%	0%	0%	30%	30%	17%
Other/Unkw	22%	18%	13%	10%	8%	9%	0%	0%	0%
White	11%	18%	0%	20%	25%	36%	40%	40%	42%
Total	100%	100%	100%	100%	100%	100%	100%	100%	100%

Note: Due to data loss during the conversion to Peoplesoft, data for 2007 is estimated.

Laney College



Permanent Administrative Headcount by Age Range

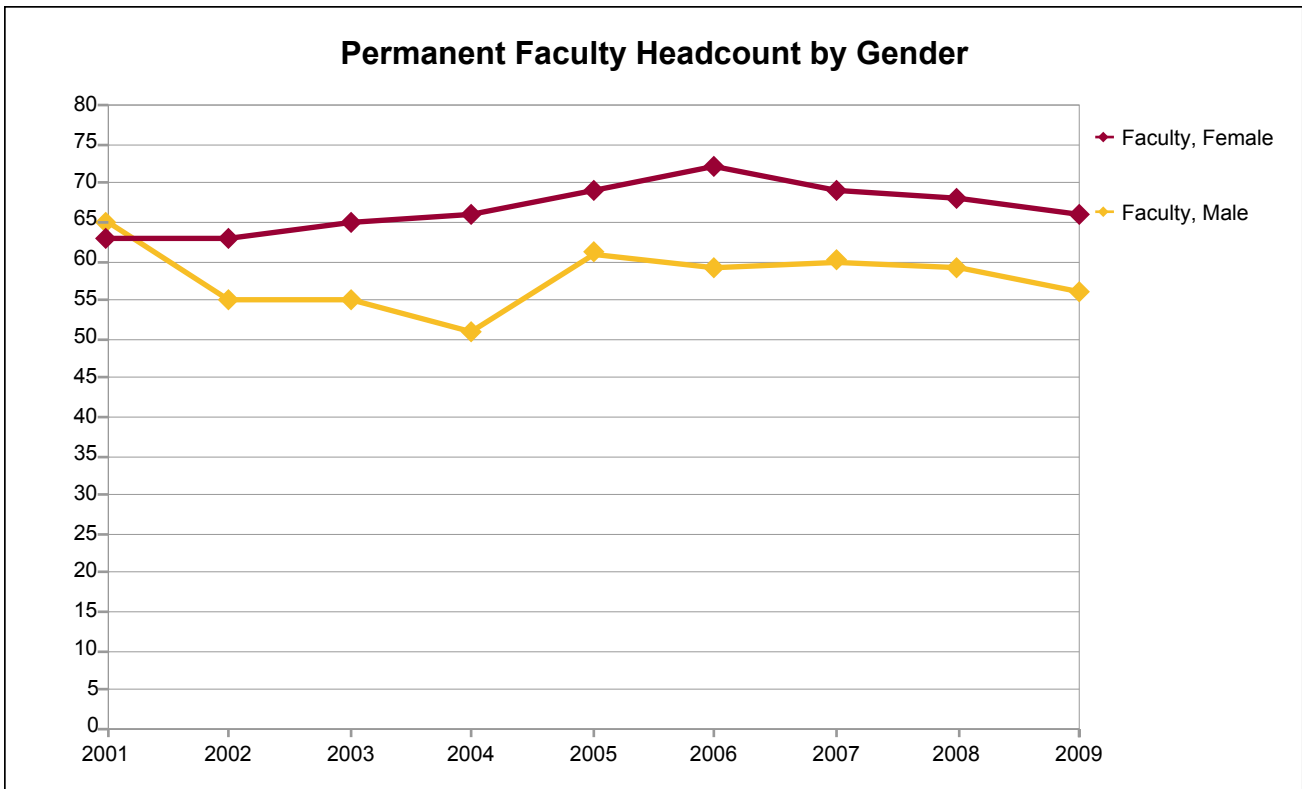
Age Grp	2001	2002	2003	2004	2005	2006	2007	2008	2009
30 - 39	0	1	1	2	2	1	2	1	2
40 - 49	2	3	3	2	2	2	4	5	3
50 - 59	7	7	4	5	5	7	2	2	3
60 - 65	0	0	0	0	1	0	2	2	4
Over 65	0	0	0	1	2	1	0	0	0
Total	9	11	8	10	12	11	10	10	12

Percentage Distribution of Permanent Administrators by Age Range

Age Grp	2001	2002	2003	2004	2005	2006	2007	2008	2009
30 - 39	0%	9%	13%	20%	17%	9%	20%	10%	17%
40 - 49	22%	27%	38%	20%	17%	18%	40%	50%	25%
50 - 59	78%	64%	50%	50%	42%	64%	20%	20%	25%
60 - 65	0%	0%	0%	0%	8%	0%	20%	20%	33%
Over 65	0%	0%	0%	10%	17%	9%	0%	0%	0%
Total	100%	100%	100%	100%	100%	100%	100%	100%	100%

Note: Due to data loss during the conversion to Peoplesoft, data for 2007 is estimated.

Laney College



Permanent Faculty Headcount by Gender

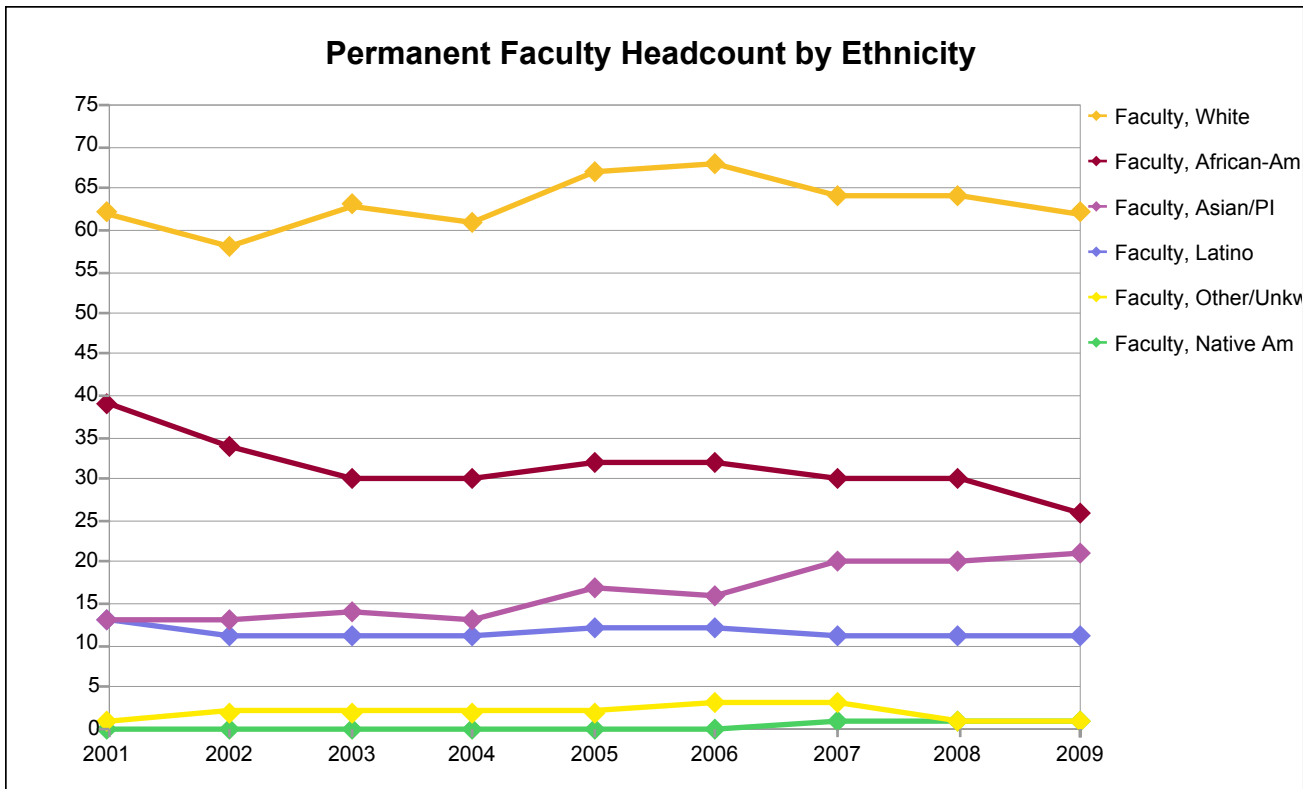
Gender	2001	2002	2003	2004	2005	2006	2007	2008	2009
Female	63	63	65	66	69	72	69	68	66
Male	65	55	55	51	61	59	60	59	56
Total	128	118	120	117	130	131	129	127	122

Percentage Distribution of Permanent Faculty by Gender

Gender	2001	2002	2003	2004	2005	2006	2007	2008	2009
Female	49%	53%	54%	56%	53%	55%	53%	54%	54%
Male	51%	47%	46%	44%	47%	45%	47%	46%	46%
Total	100%	100%	100%	100%	100%	100%	100%	100%	100%

Note: Due to data loss during the conversion to Peoplesoft, data for 2007 is estimated.

Laney College



Permanent Faculty Headcount by Ethnicity

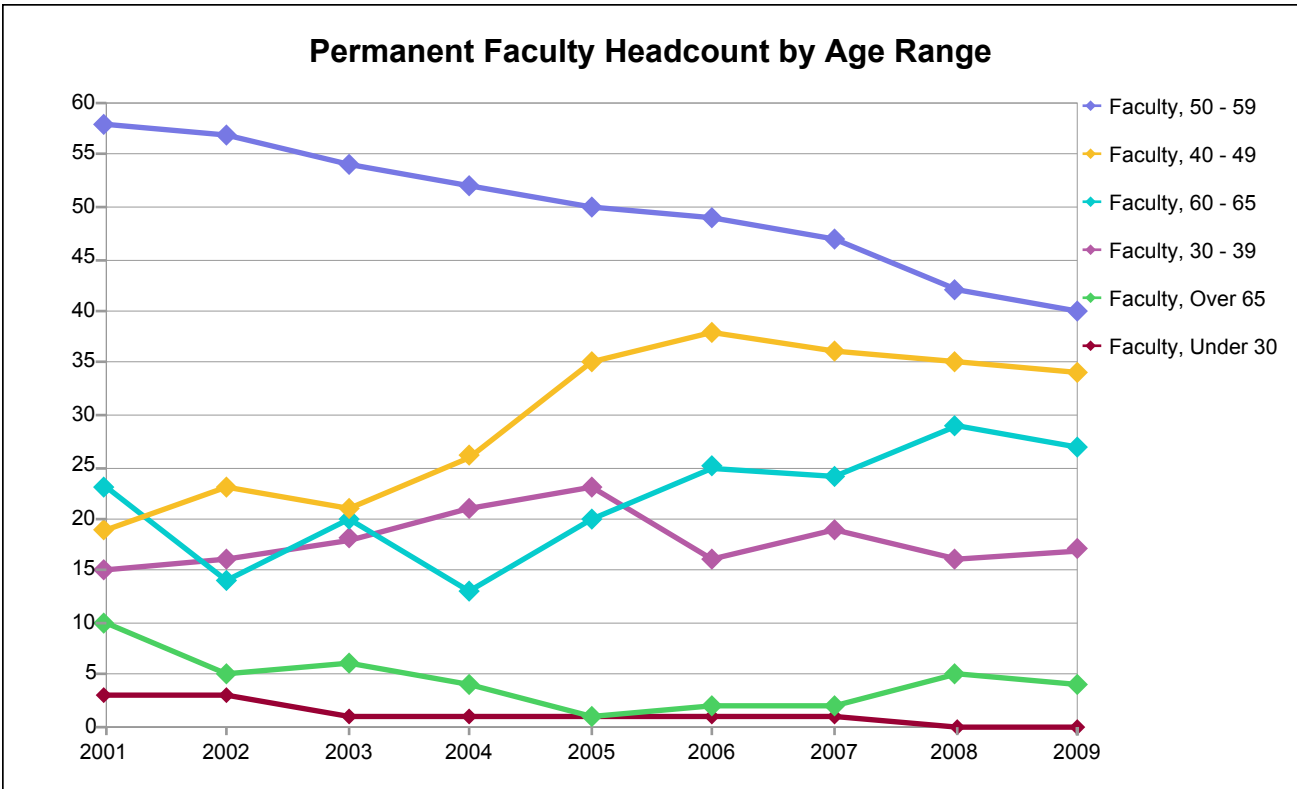
Ethnicity	2001	2002	2003	2004	2005	2006	2007	2008	2009
African-Am	39	34	30	30	32	32	30	30	26
Asian/PI	13	13	14	13	17	16	20	20	21
Latino	13	11	11	11	12	12	11	11	11
Native Am	0	0	0	0	0	0	1	1	1
Other/Unkwr	1	2	2	2	2	3	3	1	1
White	62	58	63	61	67	68	64	64	62
Total	128	118	120	117	130	131	129	127	122

Percentage Distribution of Permanent Faculty by Ethnicity

Ethnicity	2001	2002	2003	2004	2005	2006	2007	2008	2009
African-Am	30%	29%	25%	26%	25%	24%	23%	24%	21%
Asian/PI	10%	11%	12%	11%	13%	12%	16%	16%	17%
Latino	10%	9%	9%	9%	9%	9%	9%	9%	9%
Native Am	0%	0%	0%	0%	0%	0%	1%	1%	1%
Other/Unkwr	1%	2%	2%	2%	2%	2%	2%	1%	1%
White	48%	49%	53%	52%	52%	52%	50%	50%	51%
Total	100%	100%	100%	100%	100%	100%	100%	100%	100%

Note: Due to data loss during the conversion to Peoplesoft, data for 2007 is estimated.

Laney College



Permanent Faculty Headcount by Age Range

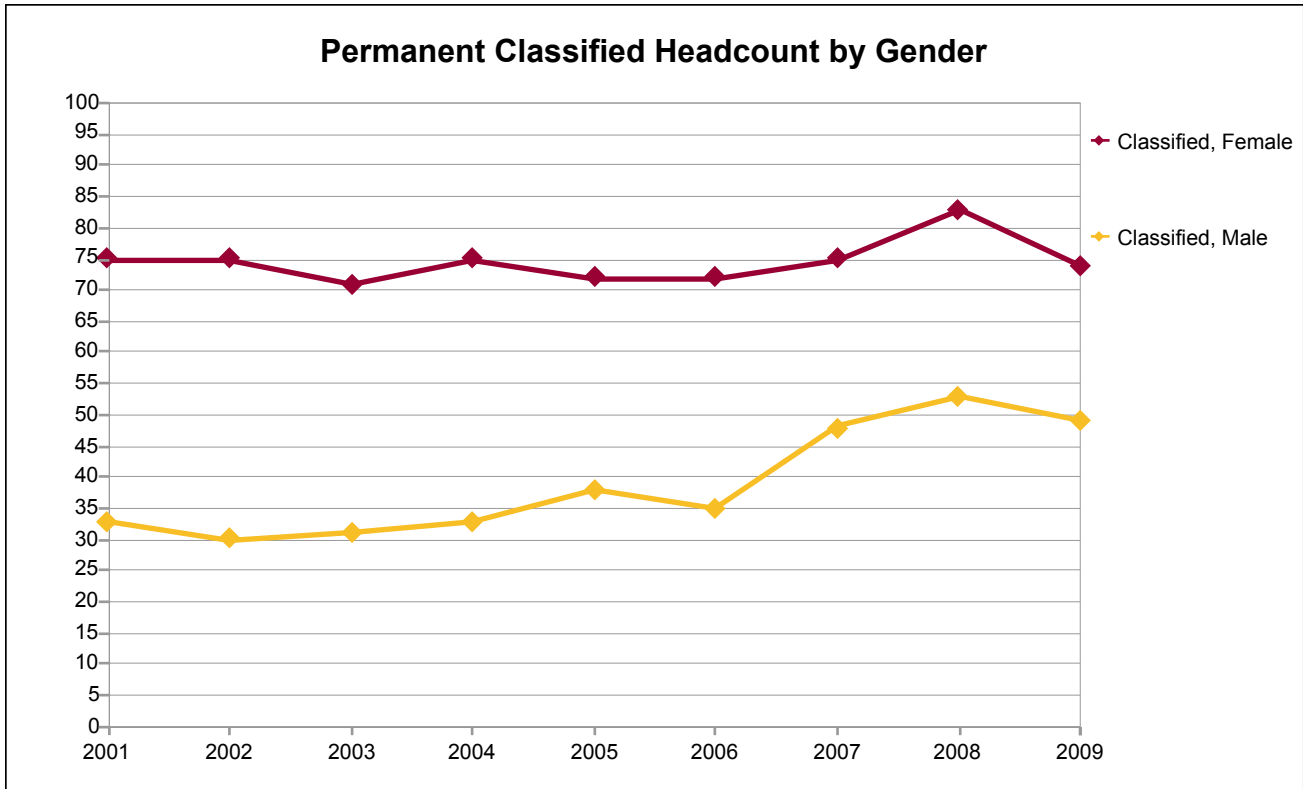
Age Grp	2001	2002	2003	2004	2005	2006	2007	2008	2009
Under 30	3	3	1	1	1	1	1	0	0
30 - 39	15	16	18	21	23	16	19	16	17
40 - 49	19	23	21	26	35	38	36	35	34
50 - 59	58	57	54	52	50	49	47	42	40
60 - 65	23	14	20	13	20	25	24	29	27
Over 65	10	5	6	4	1	2	2	5	4
Total	128	118	120	117	130	131	129	127	122

Percentage Distribution of Permanent Faculty by Age Range

Age Grp	2001	2002	2003	2004	2005	2006	2007	2008	2009
Under 30	2%	3%	1%	1%	1%	1%	1%	0%	0%
30 - 39	12%	14%	15%	18%	18%	12%	15%	13%	14%
40 - 49	15%	19%	18%	22%	27%	29%	28%	28%	28%
50 - 59	45%	48%	45%	44%	38%	37%	36%	33%	33%
60 - 65	18%	12%	17%	11%	15%	19%	19%	23%	22%
Over 65	8%	4%	5%	3%	1%	2%	2%	4%	3%
Total	100%	100%	100%	100%	100%	100%	100%	100%	100%

Note: Due to data loss during the conversion to Peoplesoft, data for 2007 is estimated.

Laney College



Permanent Classified Headcount by Gender

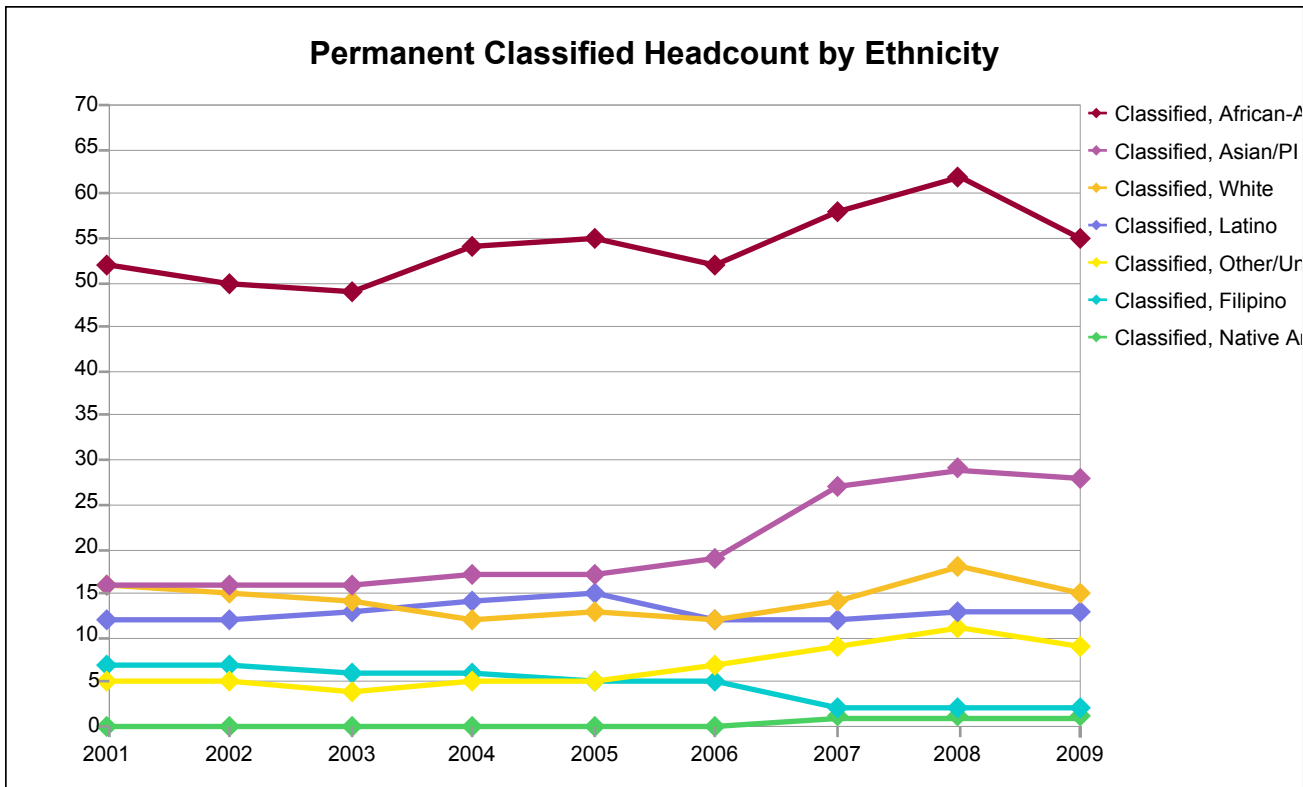
Gender	2001	2002	2003	2004	2005	2006	2007	2008	2009
Female	75	75	71	75	72	72	75	83	74
Male	33	30	31	33	38	35	48	53	49
Total	108	105	102	108	110	107	123	136	123

Percentage Distribution of Permanent Classified by Gender

Gender	2001	2002	2003	2004	2005	2006	2007	2008	2009
Female	69%	71%	70%	69%	65%	67%	61%	61%	60%
Male	31%	29%	30%	31%	35%	33%	39%	39%	40%
Total	100%	100%	100%	100%	100%	100%	100%	100%	100%

Note: Due to data loss during the conversion to Peoplesoft, data for 2007 is estimated.

Laney College



Permanent Classified Headcount by Ethnicity

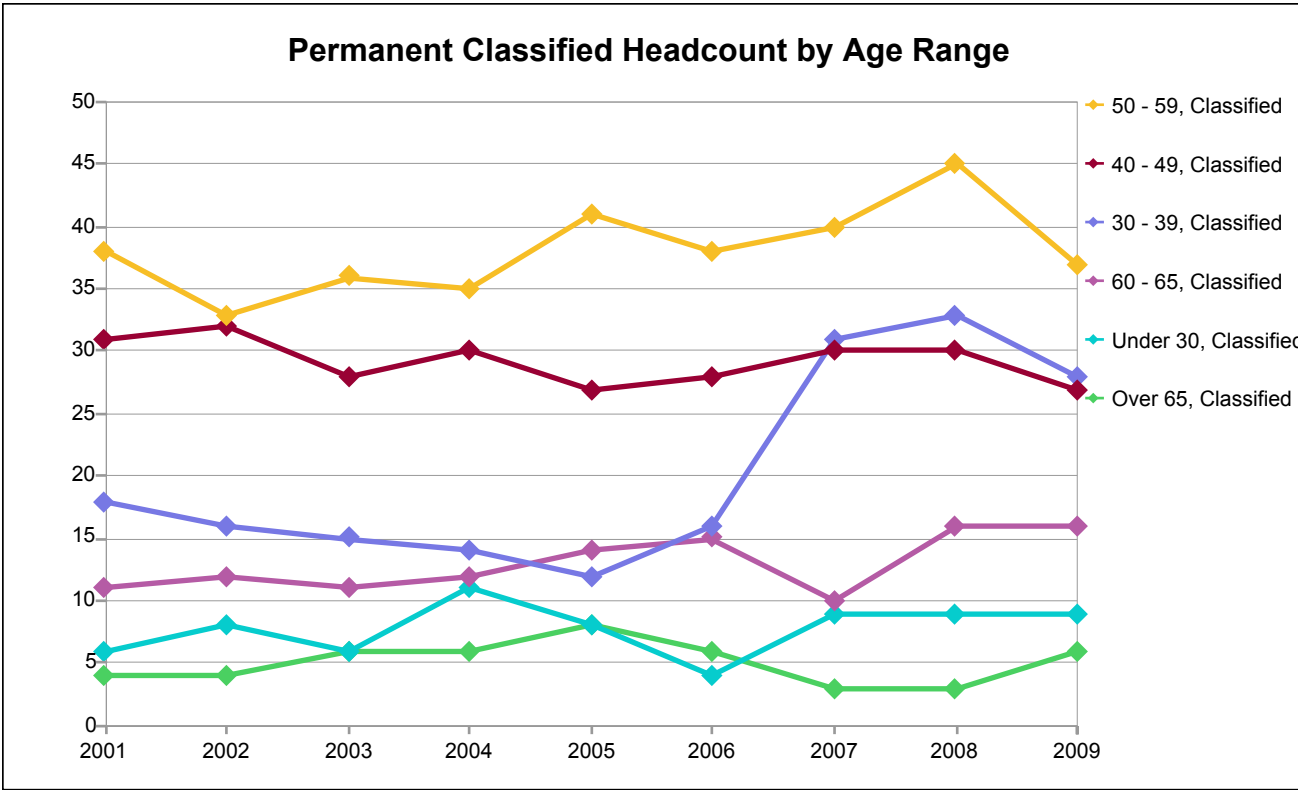
Ethnicity	2001	2002	2003	2004	2005	2006	2007	2008	2009
African-Am	52	50	49	54	55	52	58	62	55
Asian/PI	16	16	16	17	17	19	27	29	28
Filipino	7	7	6	6	5	5	2	2	2
Latino	12	12	13	14	15	12	12	13	13
Native Am	0	0	0	0	0	0	1	1	1
Other/Unkwr	5	5	4	5	5	7	9	11	9
White	16	15	14	12	13	12	14	18	15
Total	108	105	102	108	110	107	123	136	123

Percentage Distribution of Permanent Classified by Ethnicity

Ethnicity	2001	2002	2003	2004	2005	2006	2007	2008	2009
African-Am	48%	48%	48%	50%	50%	49%	47%	46%	45%
Asian/PI	15%	15%	16%	16%	15%	18%	22%	21%	23%
Filipino	6%	7%	6%	6%	5%	5%	2%	1%	2%
Latino	11%	11%	13%	13%	14%	11%	10%	10%	11%
Native Am	0%	0%	0%	0%	0%	0%	1%	1%	1%
Other/Unkwr	5%	5%	4%	5%	5%	7%	7%	8%	7%
White	15%	14%	14%	11%	12%	11%	11%	13%	12%
Total	100%	100%	100%	100%	100%	100%	100%	100%	100%

Note: Due to data loss during the conversion to Peoplesoft, data for 2007 is estimated.

Laney College



Permanent Classified Headcount by Age Range

Age Grp	2001	2002	2003	2004	2005	2006	2007	2008	2009
Under 30	6	8	6	11	8	4	9	9	9
30 - 39	18	16	15	14	12	16	31	33	28
40 - 49	31	32	28	30	27	28	30	30	27
50 - 59	38	33	36	35	41	38	40	45	37
60 - 65	11	12	11	12	14	15	10	16	16
Over 65	4	4	6	6	8	6	3	3	6
Total	108	105	102	108	110	107	123	136	123

Percentage Distribution of Permanent Classified by Age Range

Age Grp	2001	2002	2003	2004	2005	2006	2007	2008	2009
Under 30	6%	8%	6%	10%	7%	4%	7%	7%	7%
30 - 39	17%	15%	15%	13%	11%	15%	25%	24%	23%
40 - 49	29%	30%	27%	28%	25%	26%	24%	22%	22%
50 - 59	35%	31%	35%	32%	37%	36%	33%	33%	30%
60 - 65	10%	11%	11%	11%	13%	14%	8%	12%	13%
Over 65	4%	4%	6%	6%	7%	6%	2%	2%	5%
Total	100%	100%	100%	100%	100%	100%	100%	100%	100%

Note: Due to data loss during the conversion to Peoplesoft, data for 2007 is estimated.