



Peralta Facts

Employee Statistics

Laney College

February 2011

Peralta Community College District

Office of Institutional Research

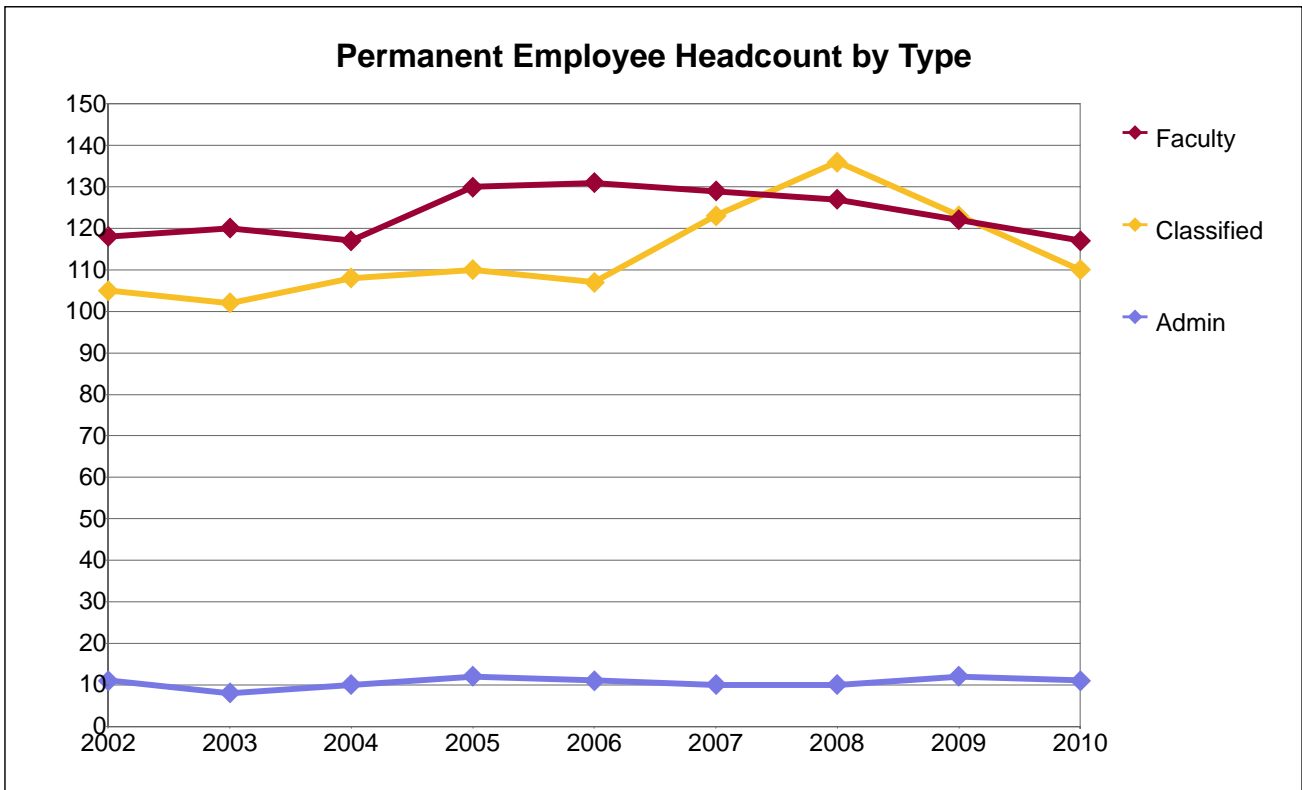
Peralta Facts Employee Statistics

Peralta Community College District

Table of Contents

Permanent Employee Headcount by Type and EEO6 Occupation	1
Permanent & Temporary Employee FTE by Assignment and EEO6 Occupation	2
Permanent Administrative Headcount by Gender.....	3
Permanent Administrative Headcount by Ethnicity.....	4
Permanent Administrative Headcount by Age Range	5
Permanent Faculty Headcount by Gender	6
Permanent Faculty Headcount by Ethnicity.....	7
Permanent Faculty Headcount by Age Range	8
Permanent Classified Headcount by Gender	9
Permanent Classified Headcount by Ethnicity.....	10
Permanent Classified Headcount by Age Range	11

Laney College

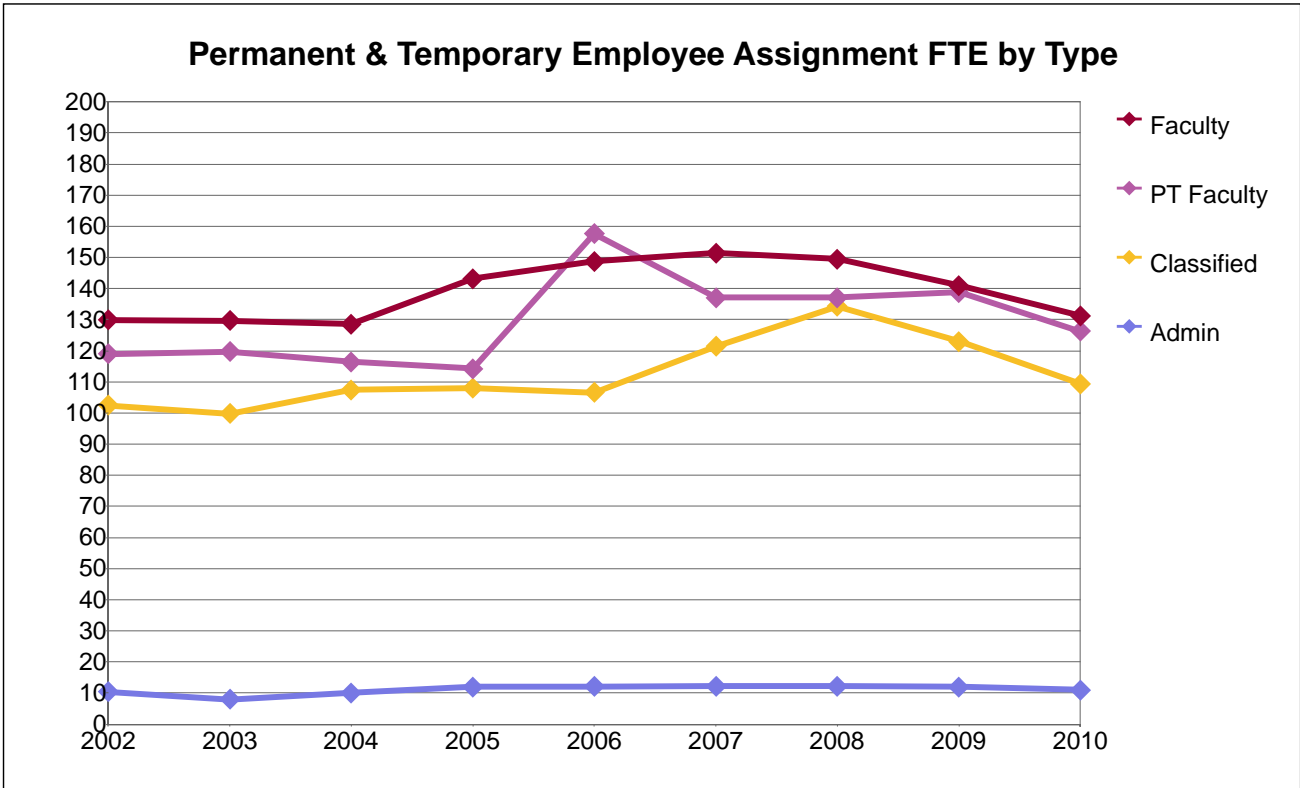


Permanent Employee Headcount by Type and EEO6 Occupation

Emp Type	EEO6 Occ2	2002	2003	2004	2005	2006	2007	2008	2009	2010
Admin	Admin	11	8	10	12	11	10	10	12	11
Faculty	Faculty	118	120	117	130	131	129	127	122	117
Classified	Professional	28	27	27	26	24	26	29	25	20
	Clerical	26	28	30	30	32	34	36	33	30
	Technical	30	26	26	25	24	34	42	40	38
	Skilled				1	1	1	1	1	1
	Maintenance	21	21	25	28	26	28	28	24	21
	All Classified	105	102	108	110	107	123	136	123	110
Total		234	230	235	252	249	262	273	257	238

Note: Due to data loss during the conversion to Peoplesoft, data for 2007 is estimated.

Laney College

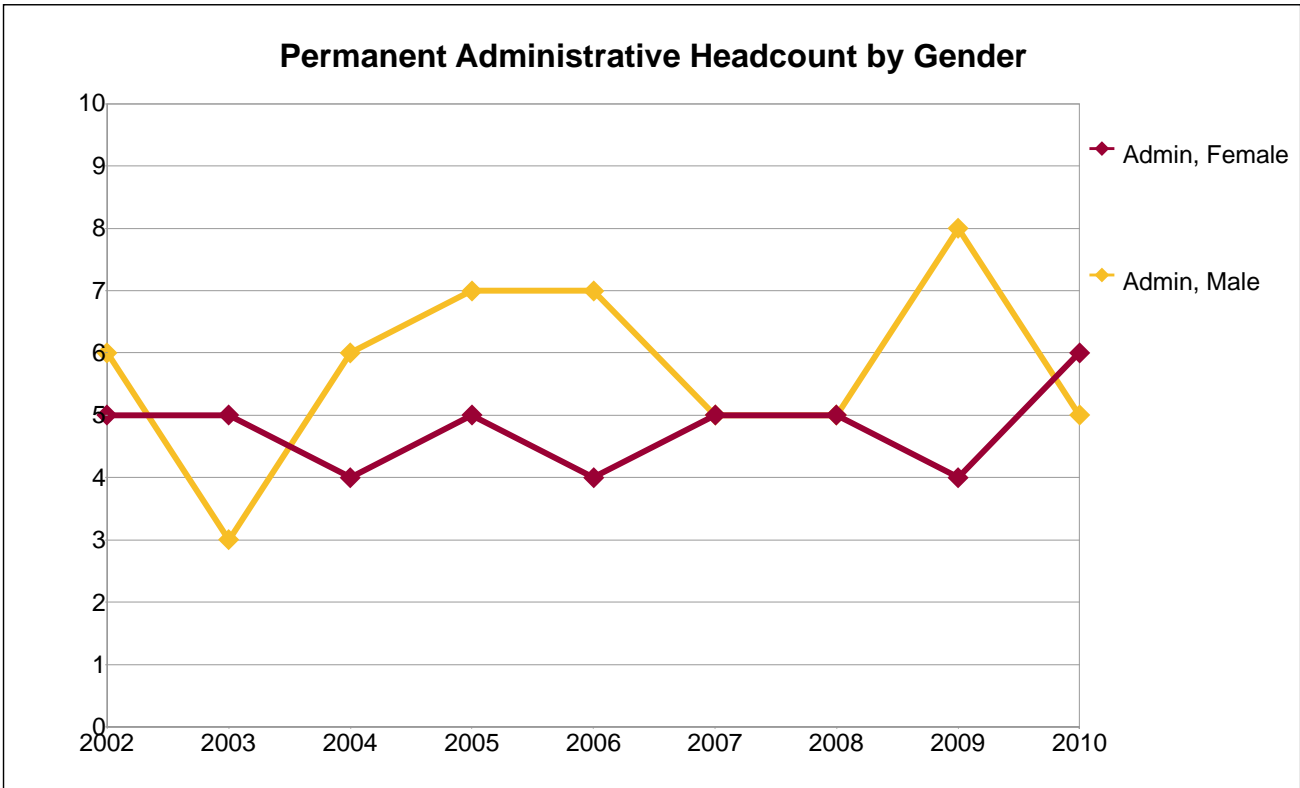


Permanent & Temporary Assignment FTE by Type and EEO6 Occupation

Emp Type	EEO6 Occ2	2002	2003	2004	2005	2006	2007	2008	2009	2010
Admin	Admin	10.4	8.0	10.0	12.0	12.2	12.2	12.2	12.0	11.0
Faculty	PT Faculty	119.0	119.7	116.4	114.3	157.7	137.0	137.0	138.8	126.3
	Sub Total	248.9	249.4	244.9	257.4	306.4	288.5	286.5	279.7	257.6
Classified	Professional	27.7	26.8	27.8	26.6	25.1	26.2	29.2	25.1	20.0
	Clerical	26.0	26.2	29.2	28.4	32.0	33.3	35.3	32.8	29.8
	Technical	27.8	26.0	25.5	24.5	23.8	34.3	42.2	39.9	37.9
	Skilled	0.0	0.0	0.0	0.5	0.4	1.3	1.3	1.5	1.4
	Maintenance	21.0	21.0	25.0	28.0	25.4	26.3	26.3	23.7	20.4
	Sub Total	102.5	99.9	107.5	108.0	106.7	121.4	134.3	123.0	109.4
Total		361.8	357.2	362.4	377.4	425.2	422.1	433.0	414.7	377.9

Note: Due to data loss during the conversion to Peoplesoft, data for 2007 is estimated.

Laney College



Permanent Administrative Headcount by Gender

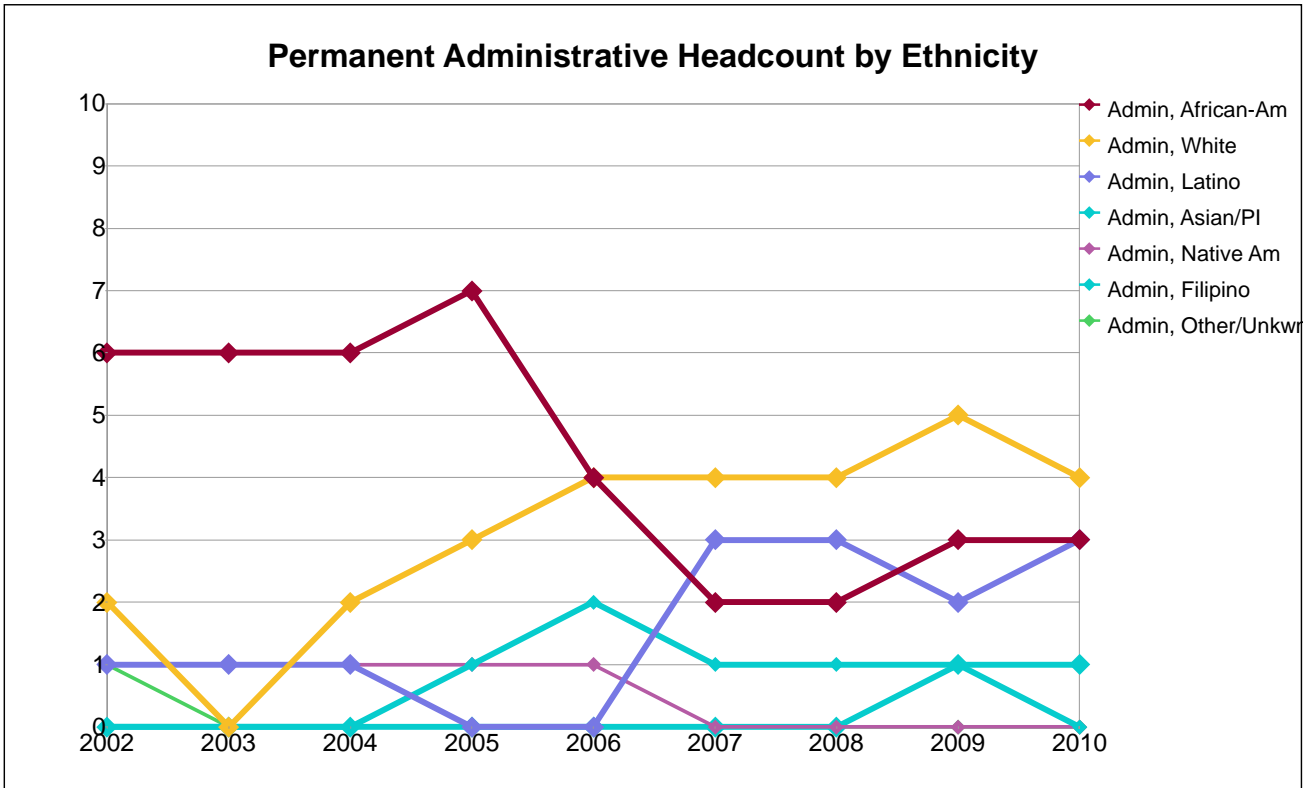
Gender	2002	2003	2004	2005	2006	2007	2008	2009	2010
Female	5	5	4	5	4	5	5	4	6
Male	6	3	6	7	7	5	5	8	5
Total	11	8	10	12	11	10	10	12	11

Percentage Distribution of Permanent Administrators by Gender

Gender	2002	2003	2004	2005	2006	2007	2008	2009	2010
Female	45%	63%	40%	42%	36%	50%	50%	33%	55%
Male	55%	38%	60%	58%	64%	50%	50%	67%	45%
Total	100%	100%	100%	100%	100%	100%	100%	100%	100%

Note: Due to data loss during the conversion to Peoplesoft, data for 2007 is estimated.

Laney College

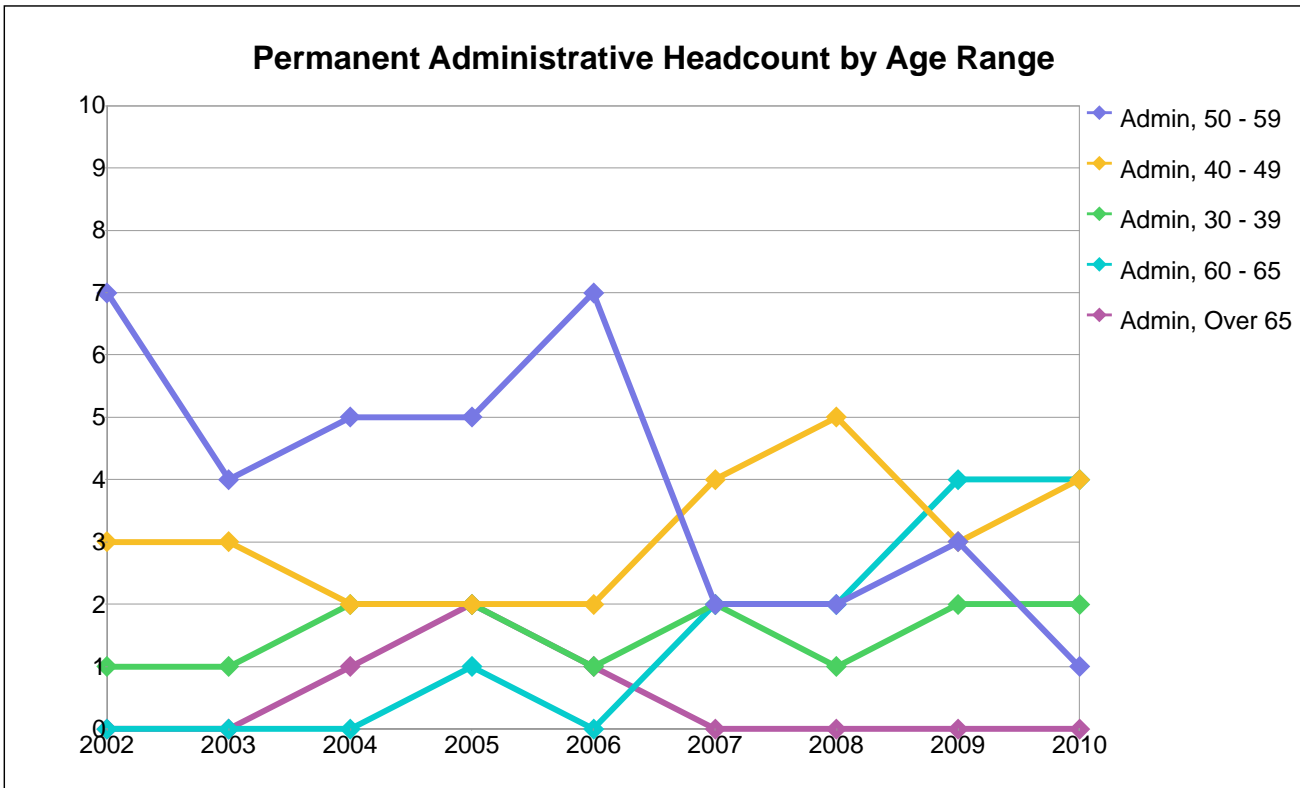


Permanent Administrative Headcount by Ethnicity

Ethnicity	2002	2003	2004	2005	2006	2007	2008	2009	2010
African-Am	6	6	6	7	4	2	2	3	3
Asian/PI	0	0	0	1	2	1	1	1	0
Filipino	0	0	0	0	0	0	0	1	1
Latino	1	1	1	0	0	3	3	2	3
Native Am	1	1	1	1	1	0	0	0	0
Other/Unkwn	1	0	0	0	0	0	0	0	0
White	2	0	2	3	4	4	4	5	4
Total	11	8	10	12	11	10	10	12	11
Percentage Distribution of Permanent Administrators by Ethnicity									
African-Am	55%	75%	60%	58%	36%	20%	20%	25%	27%
Asian/PI	0%	0%	0%	8%	18%	10%	10%	8%	0%
Filipino	0%	0%	0%	0%	0%	0%	0%	8%	9%
Latino	9%	13%	10%	0%	0%	30%	30%	17%	27%
Native Am	9%	13%	10%	8%	9%	0%	0%	0%	0%
Other/Unkwn	9%	0%	0%	0%	0%	0%	0%	0%	0%
White	18%	0%	20%	25%	36%	40%	40%	42%	36%
Total	100%	100%	100%	100%	100%	100%	100%	100%	100%

Note: Due to data loss during the conversion to Peoplesoft, data for 2007 is estimated.

Laney College



Permanent Administrative Headcount by Age Range

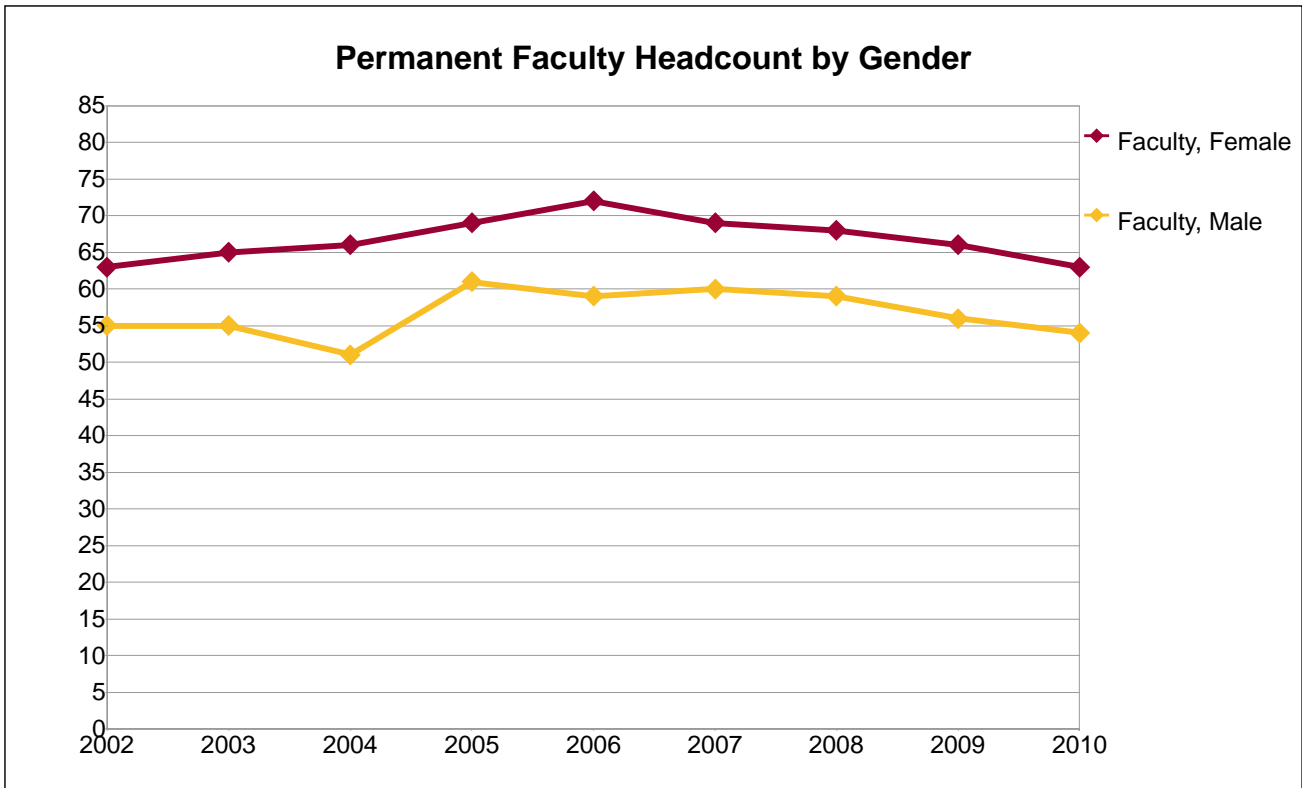
Age Grp	2002	2003	2004	2005	2006	2007	2008	2009	2010
30 - 39	1	1	2	2	1	2	1	2	2
40 - 49	3	3	2	2	2	4	5	3	4
50 - 59	7	4	5	5	7	2	2	3	1
60 - 65	0	0	0	1	0	2	2	4	4
Over 65	0	0	1	2	1	0	0	0	0
Total	11	8	10	12	11	10	10	12	11

Percentage Distribution of Permanent Administrators by Age Range

Age Grp	2002	2003	2004	2005	2006	2007	2008	2009	2010
30 - 39	9%	13%	20%	17%	9%	20%	10%	17%	18%
40 - 49	27%	38%	20%	17%	18%	40%	50%	25%	36%
50 - 59	64%	50%	50%	42%	64%	20%	20%	25%	9%
60 - 65	0%	0%	0%	8%	0%	20%	20%	33%	36%
Over 65	0%	0%	10%	17%	9%	0%	0%	0%	0%
Total	100%	100%	100%	100%	100%	100%	100%	100%	100%

Note: Due to data loss during the conversion to Peoplesoft, data for 2007 is estimated.

Laney College



Permanent Faculty Headcount by Gender

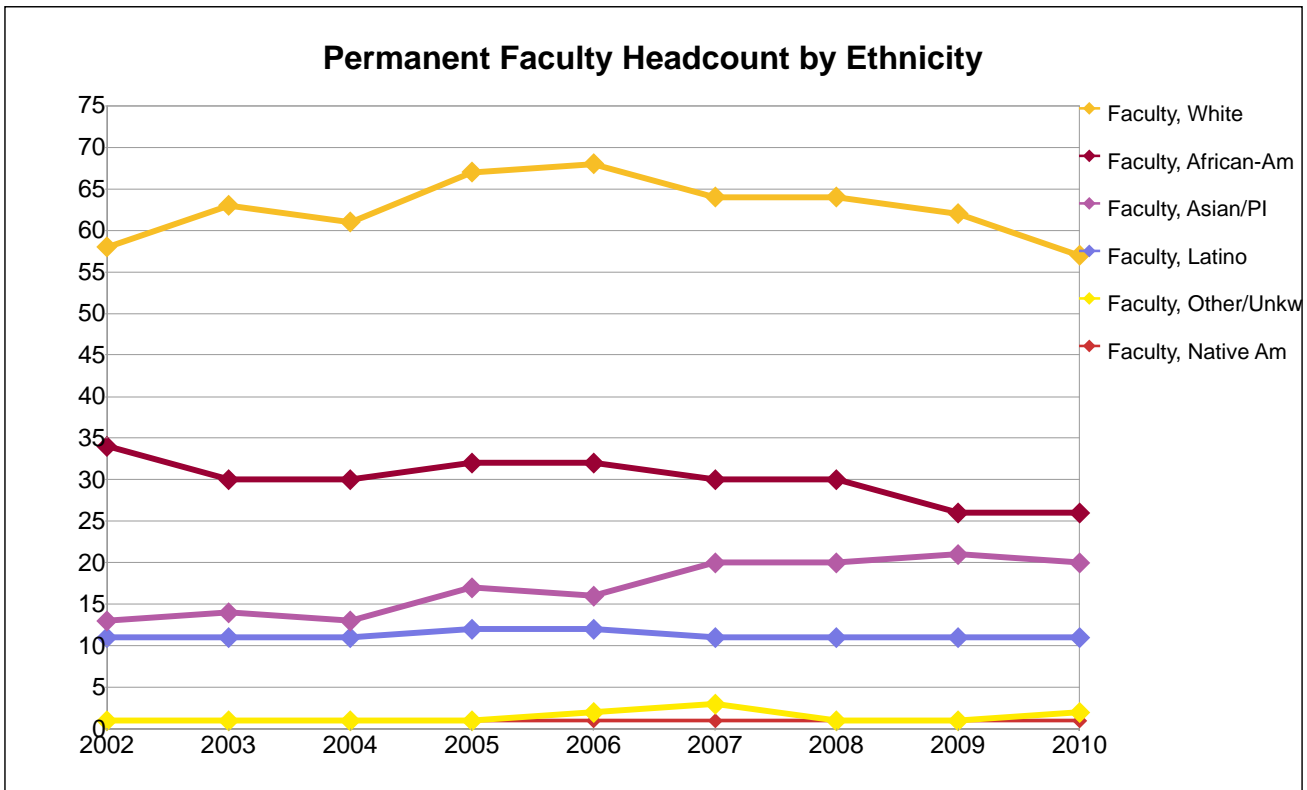
Gender	2002	2003	2004	2005	2006	2007	2008	2009	2010
Female	63	65	66	69	72	69	68	66	63
Male	55	55	51	61	59	60	59	56	54
Total	118	120	117	130	131	129	127	122	117

Percentage Distribution of Permanent Faculty by Gender

Gender	2002	2003	2004	2005	2006	2007	2008	2009	2010
Female	53%	54%	56%	53%	55%	53%	54%	54%	54%
Male	47%	46%	44%	47%	45%	47%	46%	46%	46%
Total	100%	100%	100%	100%	100%	100%	100%	100%	100%

Note: Due to data loss during the conversion to Peoplesoft, data for 2007 is estimated.

Laney College



Permanent Faculty Headcount by Ethnicity

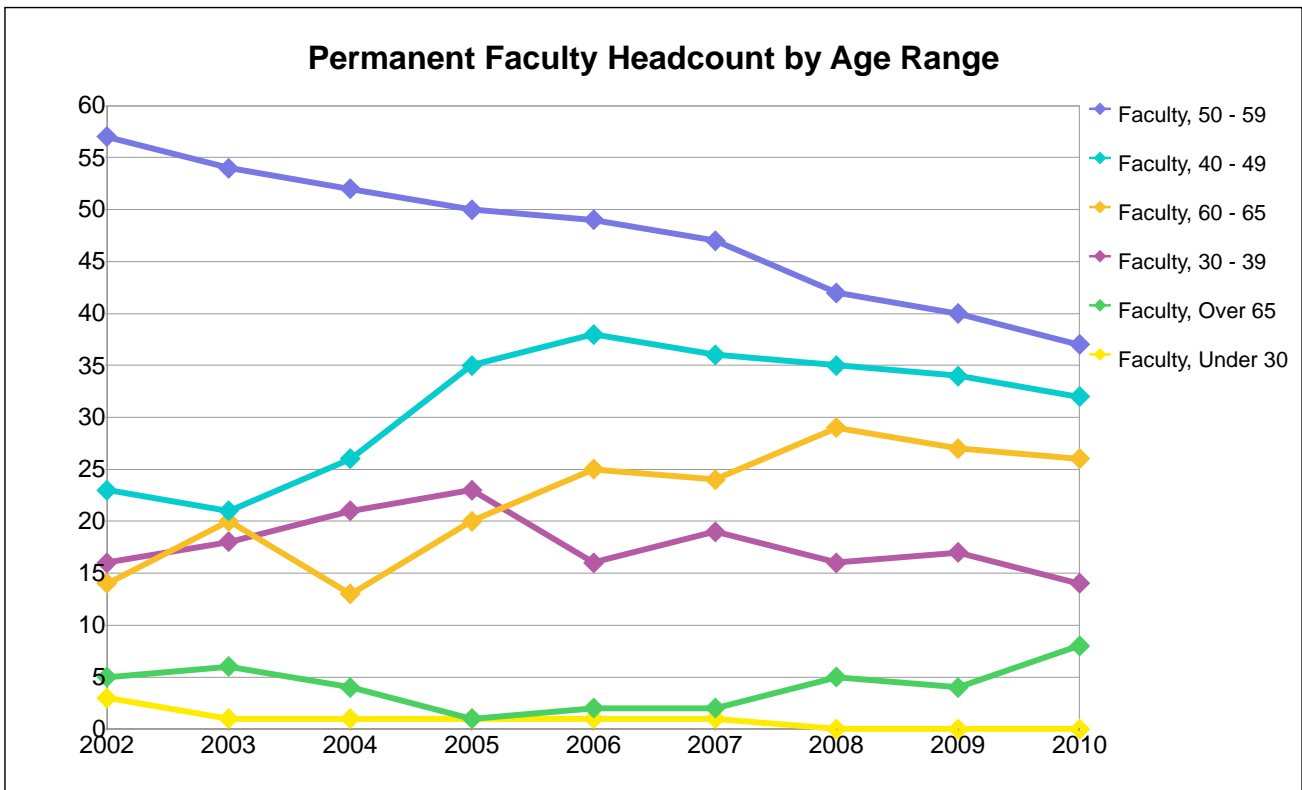
Ethnicity	2002	2003	2004	2005	2006	2007	2008	2009	2010
African-Am	34	30	30	32	32	30	30	26	26
Asian/PI	13	14	13	17	16	20	20	21	20
Latino	11	11	11	12	12	11	11	11	11
Native Am	1	1	1	1	1	1	1	1	1
Other/Unkwn	1	1	1	1	2	3	1	1	2
White	58	63	61	67	68	64	64	62	57
Total	118	120	117	130	131	129	127	122	117

Percentage Distribution of Permanent Faculty by Ethnicity

Ethnicity	2002	2003	2004	2005	2006	2007	2008	2009	2010
African-Am	29%	25%	26%	25%	24%	23%	24%	21%	22%
Asian/PI	11%	12%	11%	13%	12%	16%	16%	17%	17%
Latino	9%	9%	9%	9%	9%	9%	9%	9%	9%
Native Am	1%	1%	1%	1%	1%	1%	1%	1%	1%
Other/Unkwn	1%	1%	1%	1%	2%	2%	1%	1%	2%
White	49%	53%	52%	52%	52%	50%	50%	51%	49%
Total	100%	100%	100%	100%	100%	100%	100%	100%	100%

Note: Due to data loss during the conversion to Peoplesoft, data for 2007 is estimated.

Laney College



Permanent Faculty Headcount by Age Range

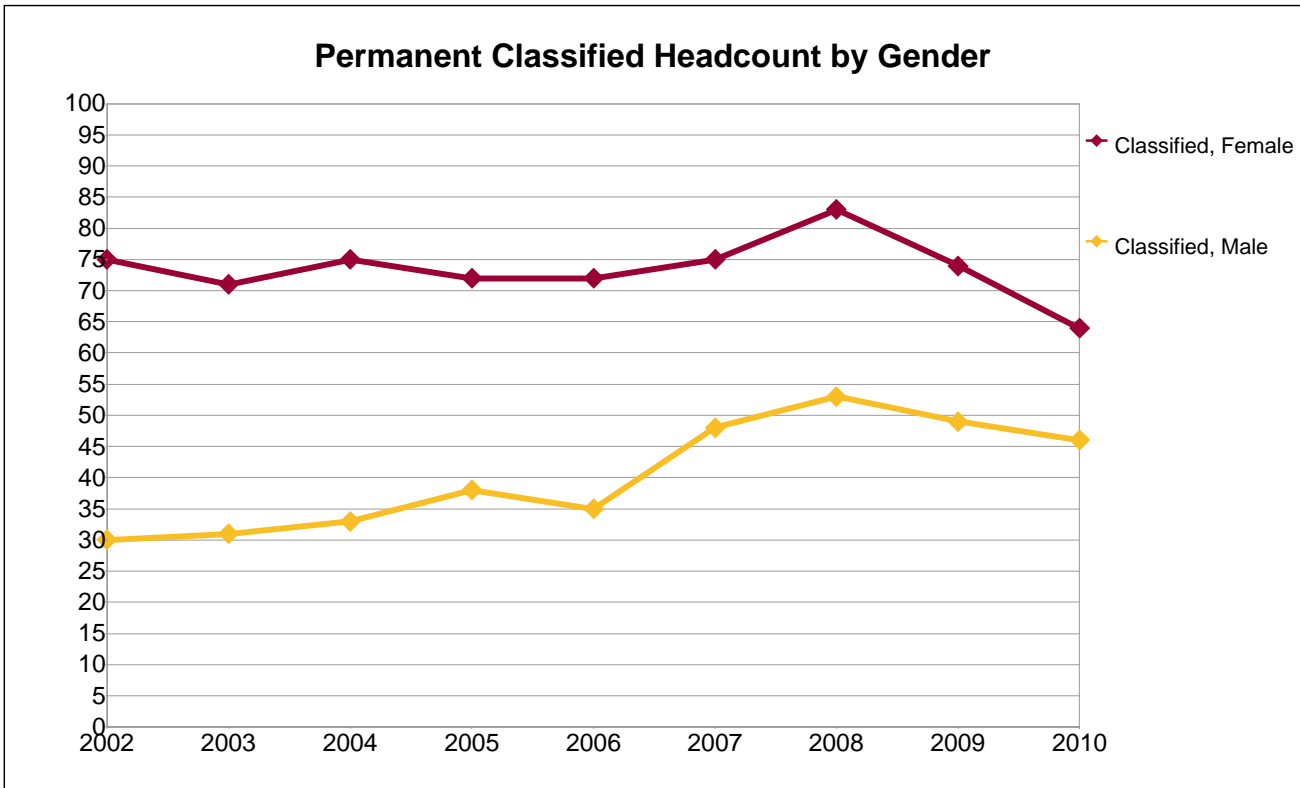
Age Grp	2002	2003	2004	2005	2006	2007	2008	2009	2010
Under 30	3	1	1	1	1	1	0	0	0
30 - 39	16	18	21	23	16	19	16	17	14
40 - 49	23	21	26	35	38	36	35	34	32
50 - 59	57	54	52	50	49	47	42	40	37
60 - 65	14	20	13	20	25	24	29	27	26
Over 65	5	6	4	1	2	2	5	4	8
Total	118	120	117	130	131	129	127	122	117

Percentage Distribution of Permanent Faculty by Age Range

Age Grp	2002	2003	2004	2005	2006	2007	2008	2009	2010
Under 30	3%	1%	1%	1%	1%	1%	0%	0%	0%
30 - 39	14%	15%	18%	18%	12%	15%	13%	14%	12%
40 - 49	19%	18%	22%	27%	29%	28%	28%	28%	27%
50 - 59	48%	45%	44%	38%	37%	36%	33%	33%	32%
60 - 65	12%	17%	11%	15%	19%	19%	23%	22%	22%
Over 65	4%	5%	3%	1%	2%	2%	4%	3%	7%
Total	100%	100%	100%	100%	100%	100%	100%	100%	100%

Note: Due to data loss during the conversion to Peoplesoft, data for 2007 is estimated.

Laney College



Permanent Classified Headcount by Gender

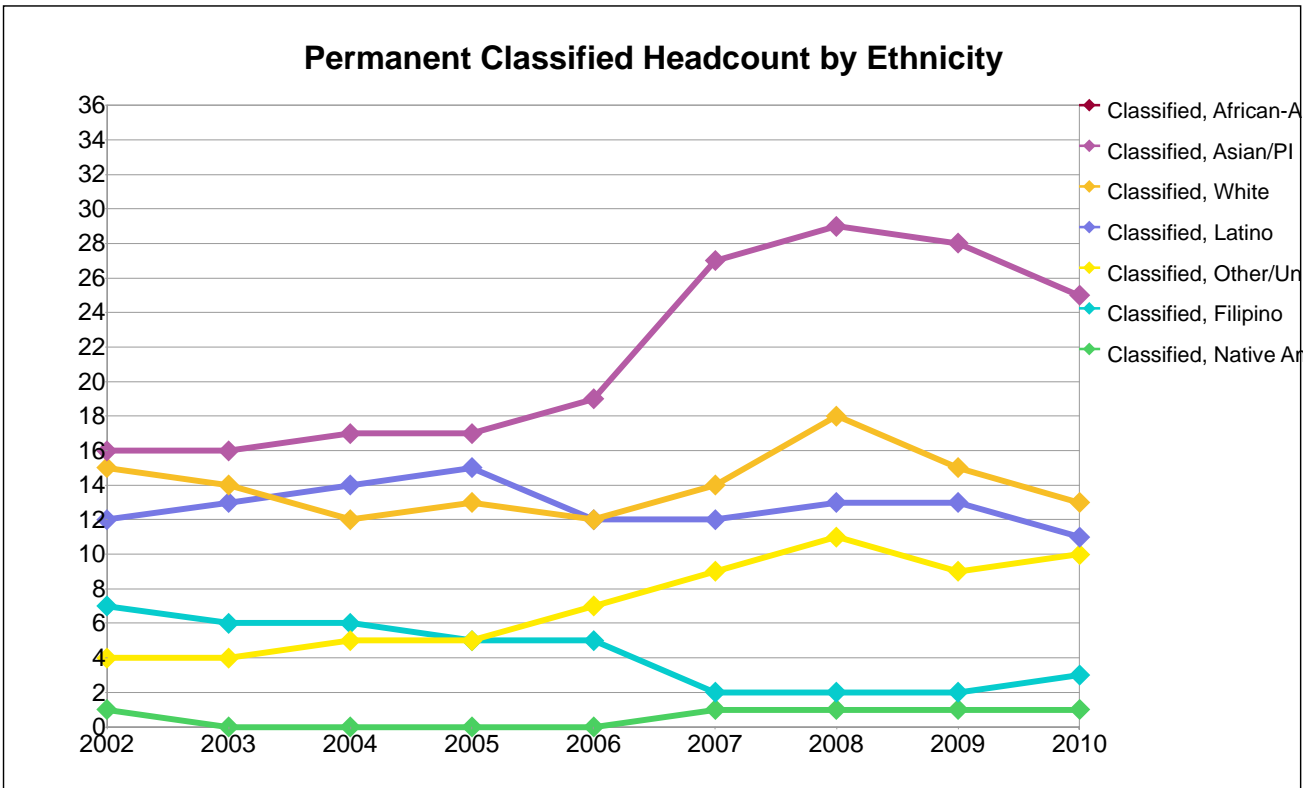
Gender	2002	2003	2004	2005	2006	2007	2008	2009	2010
Female	75	71	75	72	72	75	83	74	64
Male	30	31	33	38	35	48	53	49	46
Total	105	102	108	110	107	123	136	123	110

Percentage Distribution of Permanent Classified by Gender

Gender	2002	2003	2004	2005	2006	2007	2008	2009	2010
Female	71%	70%	69%	65%	67%	61%	61%	60%	58%
Male	29%	30%	31%	35%	33%	39%	39%	40%	42%
Total	100%	100%	100%	100%	100%	100%	100%	100%	100%

Note: Due to data loss during the conversion to Peoplesoft, data for 2007 is estimated.

Laney College



Permanent Classified Headcount by Ethnicity

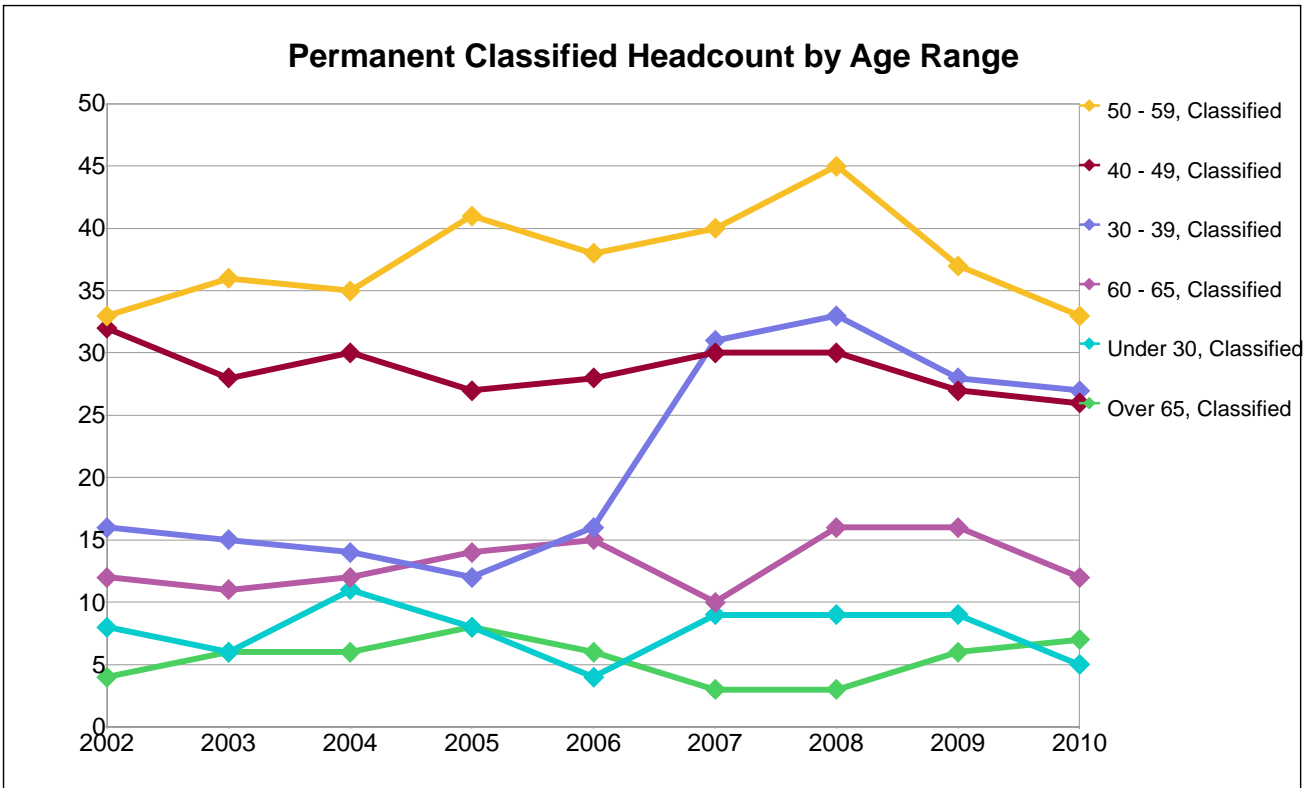
Ethnicity	2002	2003	2004	2005	2006	2007	2008	2009	2010
African-Am	50	49	54	55	52	58	62	55	47
Asian/PI	16	16	17	17	19	27	29	28	25
Filipino	7	6	6	5	5	2	2	2	3
Latino	12	13	14	15	12	12	13	13	11
Native Am	1	0	0	0	0	1	1	1	1
Other/Unkwn	4	4	5	5	7	9	11	9	10
White	15	14	12	13	12	14	18	15	13
Total	105	102	108	110	107	123	136	123	110

Percentage Distribution of Permanent Classified by Ethnicity

Ethnicity	2002	2003	2004	2005	2006	2007	2008	2009	2010
African-Am	48%	48%	50%	50%	49%	47%	46%	45%	43%
Asian/PI	15%	16%	16%	15%	18%	22%	21%	23%	23%
Filipino	7%	6%	6%	5%	5%	2%	1%	2%	3%
Latino	11%	13%	13%	14%	11%	10%	10%	11%	10%
Native Am	1%	0%	0%	0%	0%	1%	1%	1%	1%
Other/Unkwn	4%	4%	5%	5%	7%	7%	8%	7%	9%
White	14%	14%	11%	12%	11%	11%	13%	12%	12%
Total	100%	100%	100%	100%	100%	100%	100%	100%	100%

Note: Due to data loss during the conversion to Peoplesoft, data for 2007 is estimated.

Laney College



Permanent Classified Headcount by Age Range

Age Grp	2002	2003	2004	2005	2006	2007	2008	2009	2010
Under 30	8	6	11	8	4	9	9	9	5
30 - 39	16	15	14	12	16	31	33	28	27
40 - 49	32	28	30	27	28	30	30	27	26
50 - 59	33	36	35	41	38	40	45	37	33
60 - 65	12	11	12	14	15	10	16	16	12
Over 65	4	6	6	8	6	3	3	6	7
Total	105	102	108	110	107	123	136	123	110

Percentage Distribution of Permanent Classified by Age Range

Age Grp	2002	2003	2004	2005	2006	2007	2008	2009	2010
Under 30	8%	6%	10%	7%	4%	7%	7%	7%	5%
30 - 39	15%	15%	13%	11%	15%	25%	24%	23%	25%
40 - 49	30%	27%	28%	25%	26%	24%	22%	22%	24%
50 - 59	31%	35%	32%	37%	36%	33%	33%	30%	30%
60 - 65	11%	11%	11%	13%	14%	8%	12%	13%	11%
Over 65	4%	6%	6%	7%	6%	2%	2%	5%	6%
Total	100%	100%	100%	100%	100%	100%	100%	100%	100%

Note: Due to data loss during the conversion to Peoplesoft, data for 2007 is estimated.