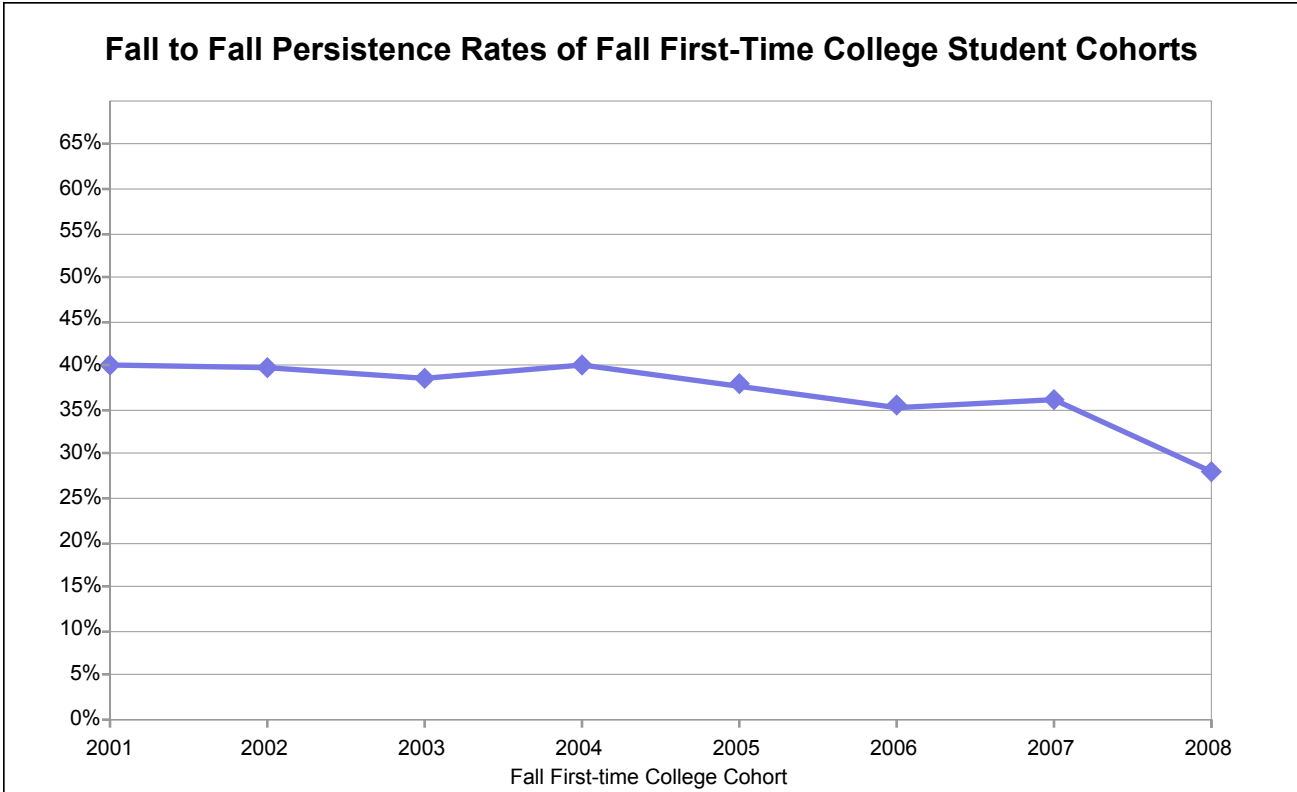


**College of Alameda**

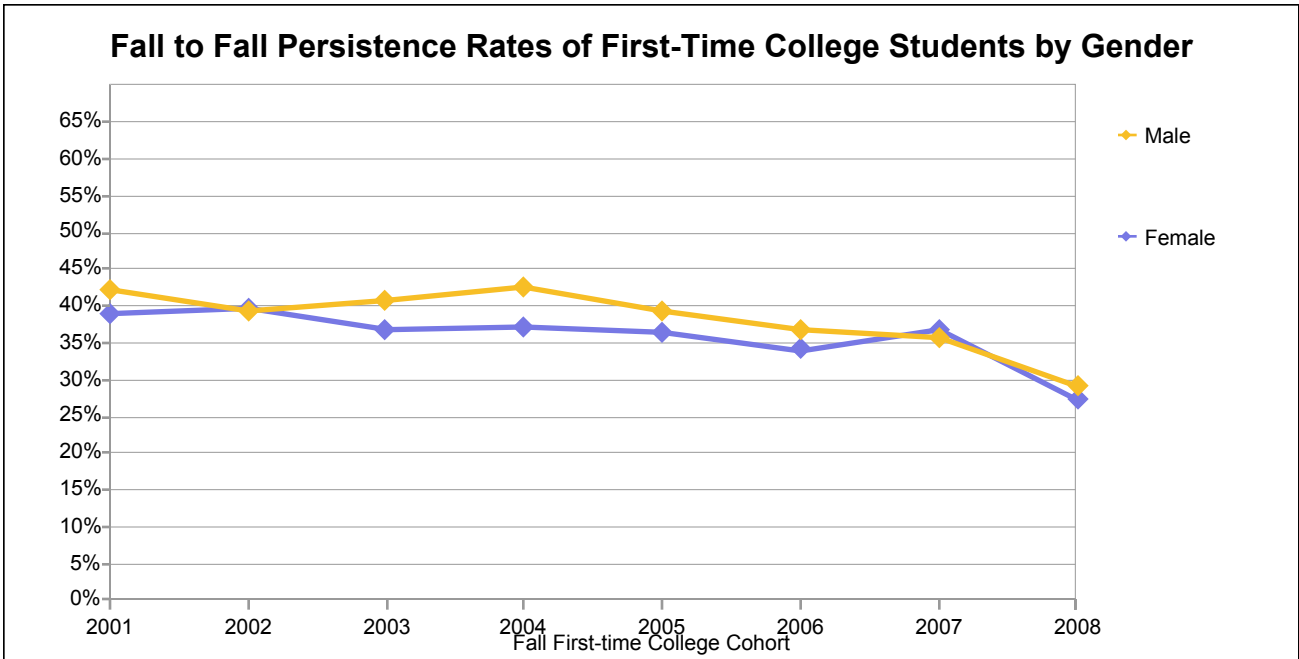


### Fall to Fall Persistence Rates of First-time College Students at College of Alameda

Fall Term First-time College Cohort	Number in the First-time College Cohort Enrolled at Fall Census at the College	Number of the Cohort Persisting to the Following Fall Opening Day at the College	Percentage of the Cohort Persisting to the Following Fall Opening Day at the College
2001	1,243	498	40%
2002	1,273	505	40%
2003	1,245	481	39%
2004	1,063	425	40%
2005	1,158	437	38%
2006	1,295	458	35%
2007	1,319	478	36%
2008	1,656	463	28%

Note: Persistence Rate is defined as the percentage of students enrolled in at least one class at fall census of the cohort year who were then enrolled in at least one class on the following fall opening day at the same college.

**College of Alameda**



**Number in the First-Time College Cohort Enrolled at Fall Census by Gender at College of Alameda**

Cohort	Female	Male	Unknown	Total
2001	598	616	29	1,243
2002	616	632	25	1,273
2003	593	621	31	1,245
2004	517	524	22	1,063
2005	567	585	6	1,158
2006	646	648	1	1,295
2007	653	665	1	1,319
2008	804	751	101	1,656

**Number of the Cohort Persisting to the Following Fall Opening Day by Gender at College of Alameda**

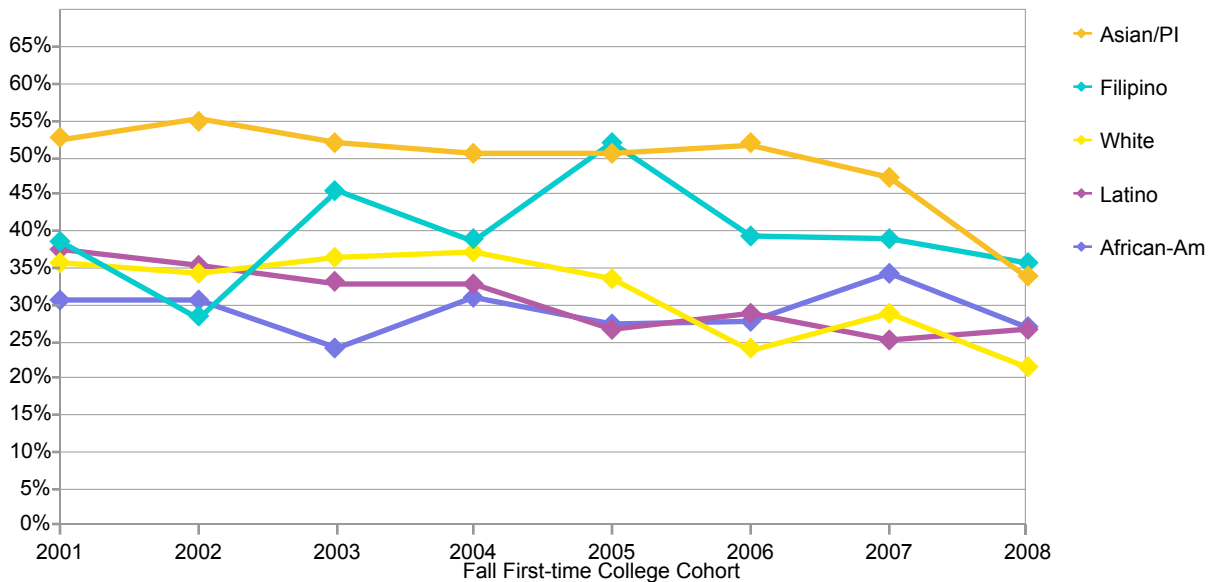
Cohort	Female	Male	Unknown	Total
2001	598	616	29	1,243
2002	616	632	25	1,273
2003	218	253	10	481
2004	193	223	9	425
2005	206	230	1	437
2006	220	238		458
2007	241	237		478
2008	220	219	24	463

**Percentage of the Cohort Persisting to the Following Fall Opening Day by Gender at College of Alameda**

Cohort	Female	Male	Unknown	Total
2001	39	42	14	40
2002	40	39	44	40
2003	37	41	32	39
2004	37	43	41	40
2005	36	39	17	38
2006	34	37	0	35
2007	37	36	0	36
2008	27	29	24	28

## College of Alameda

### Fall to Fall Persistence Rates of First-Time College Students by Ethnicity



**Number in the First-Time College Cohort Enrolled at Fall Census by Ethnicity at College of Alameda**

Cohort	African-Am	Asian/PI	Filipino	Latino	Other/Unkwn	White	Total
2001	312	386	62	168	107	208	1,243
2002	307	403	78	187	87	211	1,273
2003	297	424	55	173	104	192	1,245
2004	243	338	67	155	87	173	1,063
2005	314	375	52	165	94	158	1,158
2006	323	384	74	201	108	205	1,295
2007	374	397	54	207	100	187	1,319
2008	397	454	90	217	239	259	1,656

**Number of the Cohort Persisting to the Following Fall Opening Day by Ethnicity at College of Alameda**

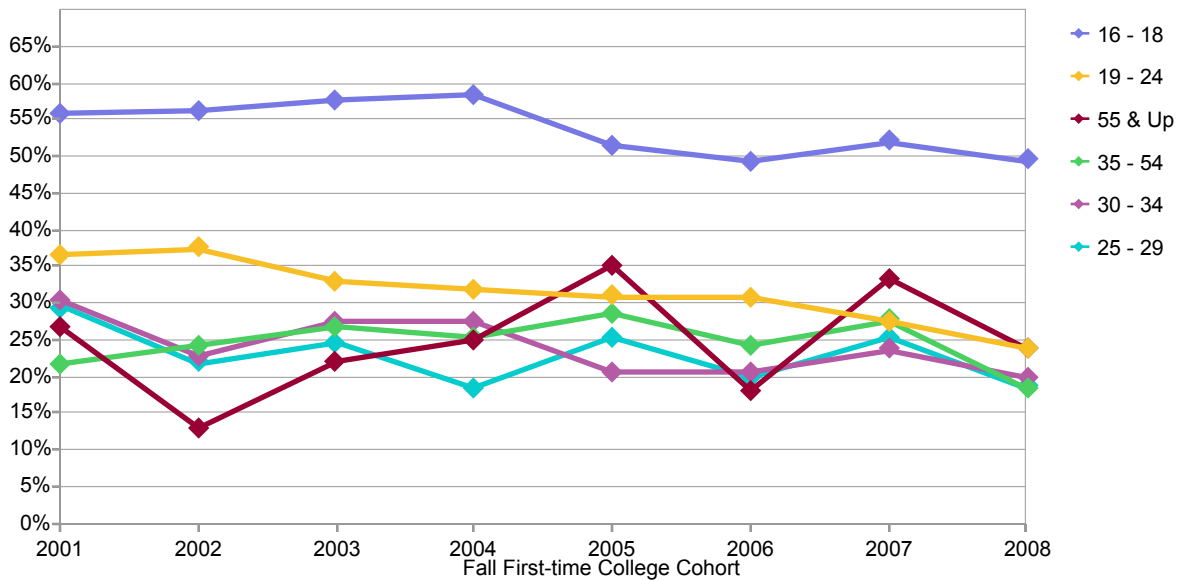
Cohort	African-Am	Asian/PI	Filipino	Latino	Other/Unkwn	White	Total
2001	95	203	24	63	39	74	498
2002	94	222	22	66	29	72	505
2003	72	221	25	57	36	70	481
2004	75	171	26	51	38	64	425
2005	86	190	27	44	37	53	437
2006	89	199	29	58	34	49	458
2007	128	188	21	52	35	54	478
2008	107	153	32	58	57	56	463

**Percentage of the Cohort Persisting to the Following Fall Opening Day by Ethnicity at College of Alameda**

Cohort	African-Am	Asian/PI	Filipino	Latino	Other/Unkwn	White	Total
2001	30	53	39	38	36	36	40
2002	31	55	28	35	33	34	40
2003	24	52	45	33	35	36	39
2004	31	51	39	33	44	37	40
2005	27	51	52	27	39	34	38
2006	28	52	39	29	31	24	35
2007	34	47	39	25	35	29	36
2008	27	34	36	27	24	22	28

**College of Alameda**

**Fall to Fall Persistence Rates of First-Time College Students by Age Group**



**Number in the First-Time College Cohort Enrolled at Fall Census by Age Group at College of Alameda**

Cohort	16 - 18	19 - 24	25 - 29	30 - 34	35 - 54	55 & Up	Total
2001	398	507	122	66	120	30	1,243
2002	416	520	96	70	148	23	1,273
2003	386	504	117	80	131	27	1,245
2004	404	408	86	51	102	12	1,063
2005	441	416	103	63	98	37	1,158
2006	471	509	101	68	124	22	1,295
2007	482	526	115	59	119	18	1,319
2008	379	652	225	111	247	42	1,656

**Number of the Cohort Persisting to the Following Fall Opening Day by Age Group at College of Alameda**

Cohort	16 - 18	19 - 24	25 - 29	30 - 34	35 - 54	55 & Up	Total
2001	222	186	36	20	26	8	498
2002	234	195	21	16	36	3	505
2003	223	166	29	22	35	6	481
2004	236	130	16	14	26	3	425
2005	228	129	26	13	28	13	437
2006	233	157	20	14	30	4	458
2007	251	145	29	14	33	6	478
2008	188	155	42	22	46	10	463

**Percentage of the Cohort Persisting to the Following Fall Opening Day by Age Group at College of Alameda**

Cohort	16 - 18	19 - 24	25 - 29	30 - 34	35 - 54	55 & Up	Total
2001	56	37	30	30	22	27	40
2002	56	38	22	23	24	13	40
2003	58	33	25	28	27	22	39
2004	58	32	19	27	25	25	40
2005	52	31	25	21	29	35	38
2006	49	31	20	21	24	18	35
2007	52	28	25	24	28	33	36
2008	50	24	19	20	19	24	28