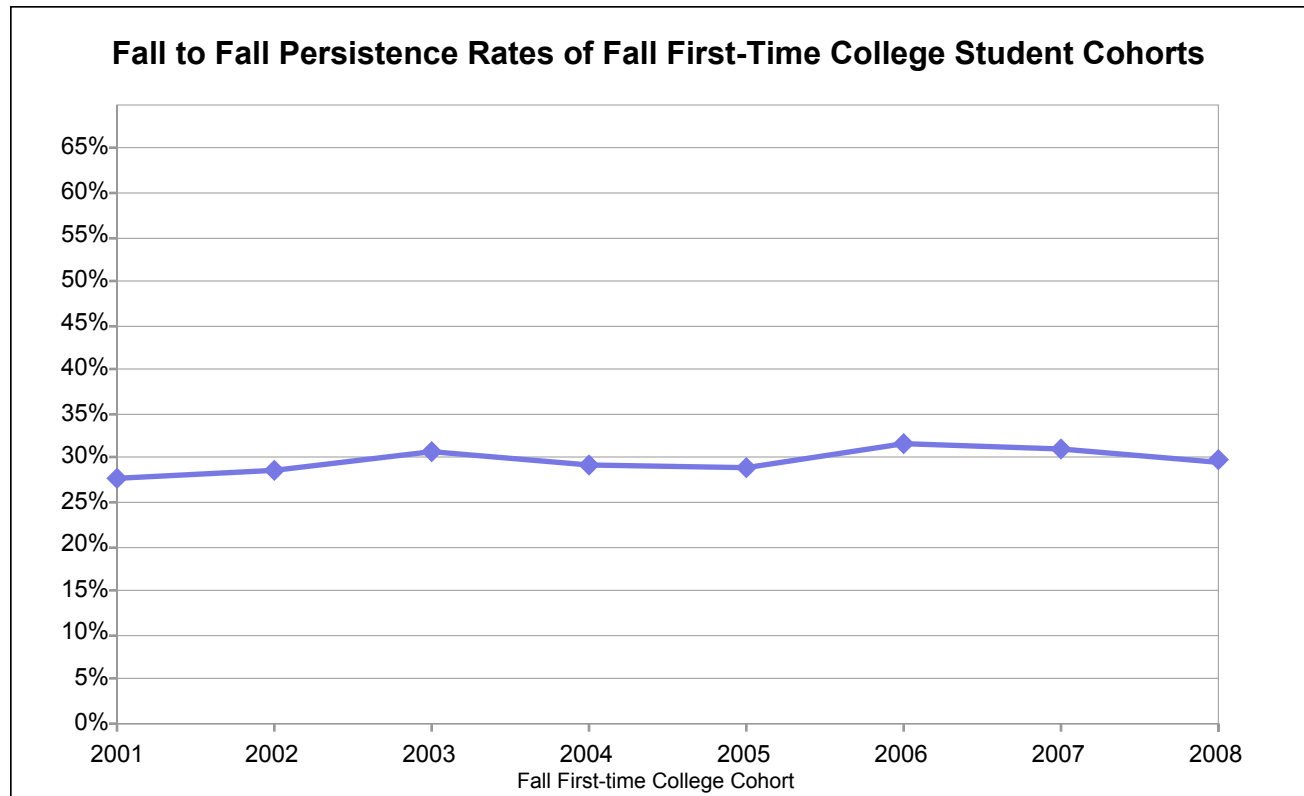


## Berkeley City College

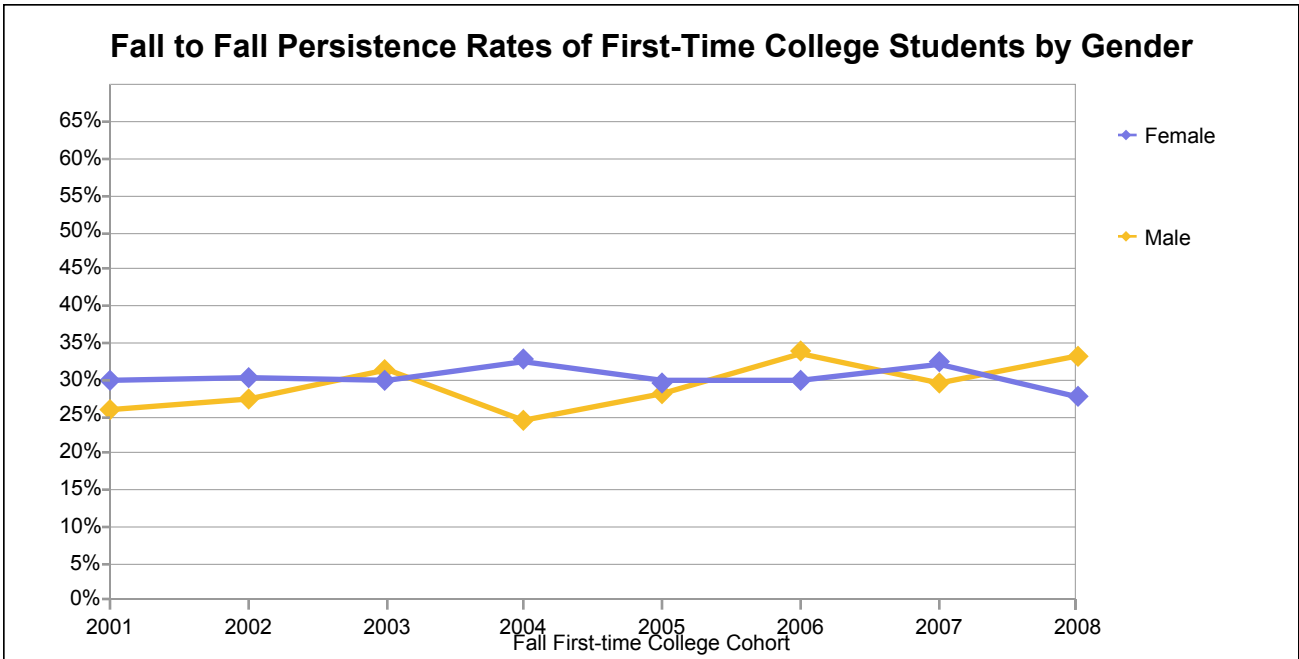


### Fall to Fall Persistence Rates of First-time College Students at Berkeley City College

Fall Term First-time College Cohort	Number in the First-time College Cohort Enrolled at Fall Census at the College	Number of the Cohort Persisting to the Following Fall Opening Day at the College	Percentage of the Cohort Persisting to the Following Fall Opening Day at the College
2001	896	249	28%
2002	912	261	29%
2003	828	254	31%
2004	815	237	29%
2005	874	252	29%
2006	1,016	321	32%
2007	1,357	421	31%
2008	2,134	632	30%

Note: Persistence Rate is defined as the percentage of students enrolled in at least one class at fall census of the cohort year who were then enrolled in at least one class on the following fall opening day at the same college.

## Berkeley City College



**Number in the First-Time College Cohort Enrolled at Fall Census by Gender at Berkeley City College**

Cohort	Female	Male	Unknown	Total
2001	490	378	28	896
2002	514	370	28	912
2003	437	349	42	828
2004	429	340	46	815
2005	468	403	3	874
2006	534	481	1	1,016
2007	760	596	1	1,357
2008	1,162	852	120	2,134

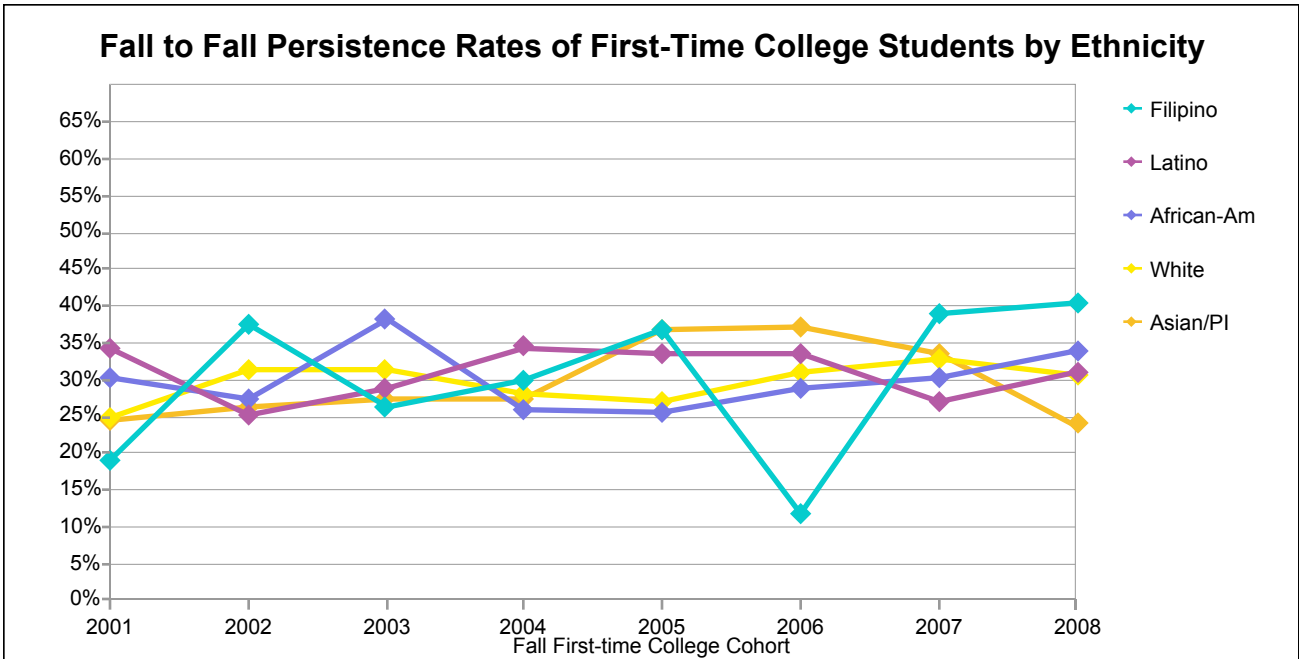
**Number of the Cohort Persisting to the Following Fall Opening Day by Gender at Berkeley City College**

Cohort	Female	Male	Unknown	Total
2001	490	378	28	896
2002	514	370	28	912
2003	130	109	15	254
2004	140	83	14	237
2005	139	113		252
2006	159	162		321
2007	245	176		421
2008	324	283	25	632

**Percentage of the Cohort Persisting to the Following Fall Opening Day by Gender at Berkeley City College**

Cohort	Female	Male	Unknown	Total
2001	30	26	14	28
2002	30	27	14	29
2003	30	31	36	31
2004	33	24	30	29
2005	30	28	0	29
2006	30	34	0	32
2007	32	30	0	31
2008	28	33	21	30

## Berkeley City College



**Number in the First-Time College Cohort Enrolled at Fall Census by Ethnicity at Berkeley City College**

Cohort	African-Am	Asian/PI	Filipino	Latino	Other/Unkwn	White	Total
2001	169	152	21	129	136	289	896
2002	198	163	16	127	143	265	912
2003	139	153	19	101	131	285	828
2004	170	121	20	128	141	235	815
2005	208	125	19	134	128	260	874
2006	222	159	17	125	159	334	1,016
2007	261	235	36	212	189	424	1,357
2008	334	397	67	309	426	601	2,134

**Number of the Cohort Persisting to the Following Fall Opening Day by Ethnicity at Berkeley City College**

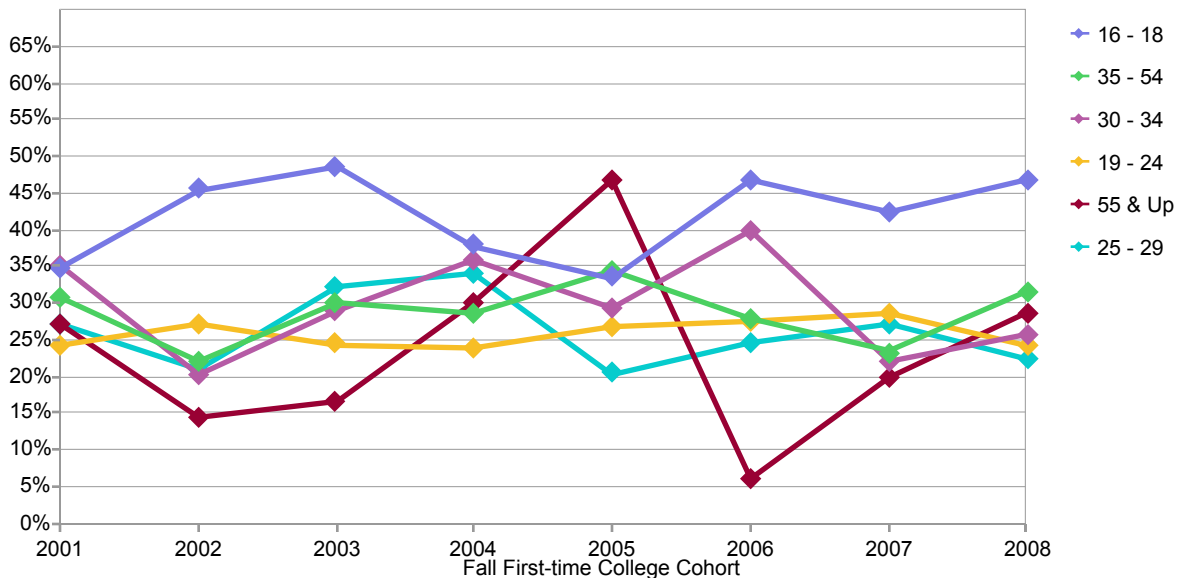
Cohort	African-Am	Asian/PI	Filipino	Latino	Other/Unkwn	White	Total
2001	51	37	4	44	41	72	249
2002	54	43	6	32	43	83	261
2003	53	42	5	29	36	89	254
2004	44	33	6	44	44	66	237
2005	53	46	7	45	31	70	252
2006	64	59	2	42	51	103	321
2007	79	79	14	57	53	139	421
2008	113	95	27	96	118	183	632

**Percentage of the Cohort Persisting to the Following Fall Opening Day by Ethnicity at Berkeley City College**

Cohort	African-Am	Asian/PI	Filipino	Latino	Other/Unkwn	White	Total
2001	30	24	19	34	30	25	28
2002	27	26	38	25	30	31	29
2003	38	27	26	29	27	31	31
2004	26	27	30	34	31	28	29
2005	25	37	37	34	24	27	29
2006	29	37	12	34	32	31	32
2007	30	34	39	27	28	33	31
2008	34	24	40	31	28	30	30

## Berkeley City College

### Fall to Fall Persistence Rates of First-Time College Students by Age Group



**Number in the First-Time College Cohort Enrolled at Fall Census by Age Group at Berkeley City College**

Cohort	16 - 18	19 - 24	25 - 29	30 - 34	35 - 54	55 & Up	Total
2001	155	475	107	57	91	11	896
2002	169	469	115	59	86	14	912
2003	158	434	102	52	70	12	828
2004	166	445	88	50	56	10	815
2005	188	456	93	41	81	15	874
2006	214	533	106	50	97	16	1,016
2007	328	693	143	63	120	10	1,357
2008	427	923	305	155	254	70	2,134

**Number of the Cohort Persisting to the Following Fall Opening Day by Age Group at Berkeley City College**

Cohort	16 - 18	19 - 24	25 - 29	30 - 34	35 - 54	55 & Up	Total
2001	54	115	29	20	28	3	249
2002	77	127	24	12	19	2	261
2003	77	106	33	15	21	2	254
2004	63	107	30	18	16	3	237
2005	63	123	19	12	28	7	252
2006	100	147	26	20	27	1	321
2007	139	199	39	14	28	2	421
2008	200	224	68	40	80	20	632

**Percentage of the Cohort Persisting to the Following Fall Opening Day by Age Group at Berkeley City College**

Cohort	16 - 18	19 - 24	25 - 29	30 - 34	35 - 54	55 & Up	Total
2001	35	24	27	35	31	27	28
2002	46	27	21	20	22	14	29
2003	49	24	32	29	30	17	31
2004	38	24	34	36	29	30	29
2005	34	27	20	29	35	47	29
2006	47	28	25	40	28	6	32
2007	42	29	27	22	23	20	31
2008	47	24	22	26	31	29	30