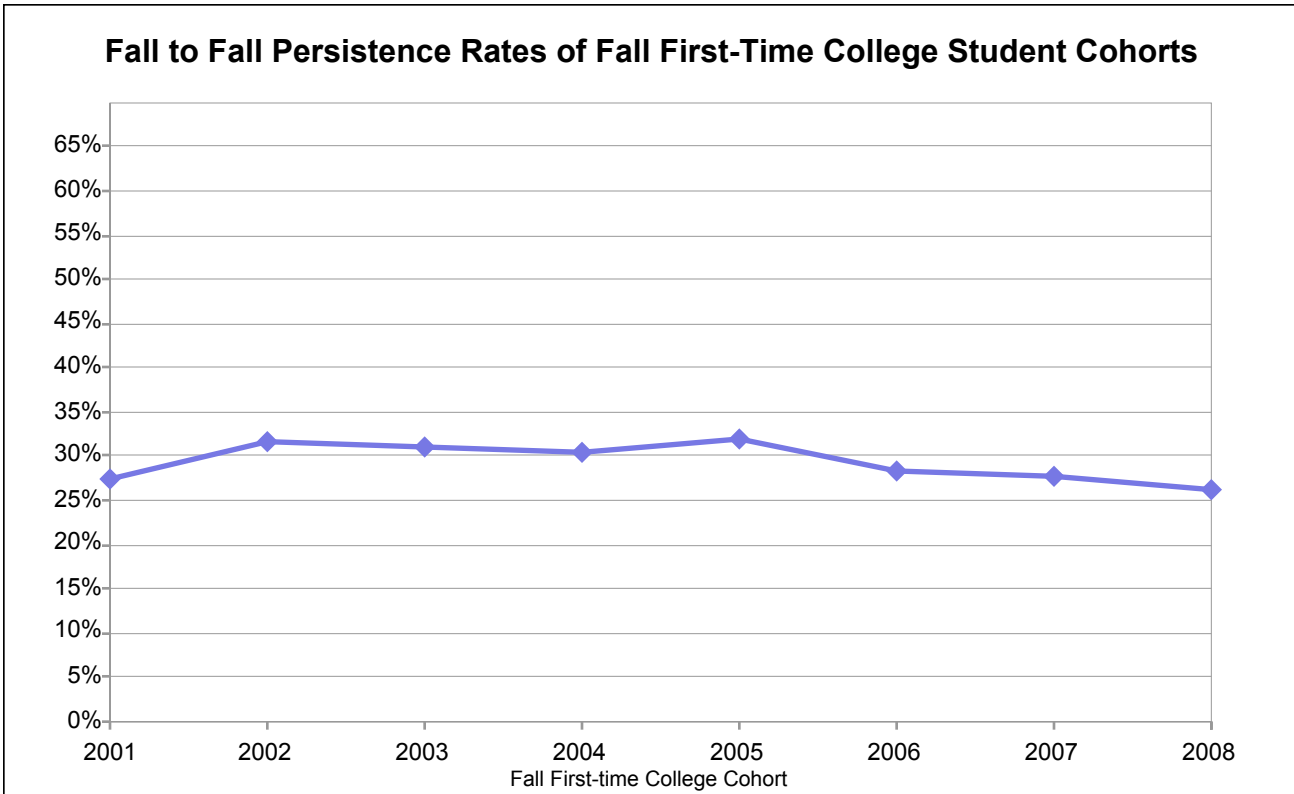


Merritt College

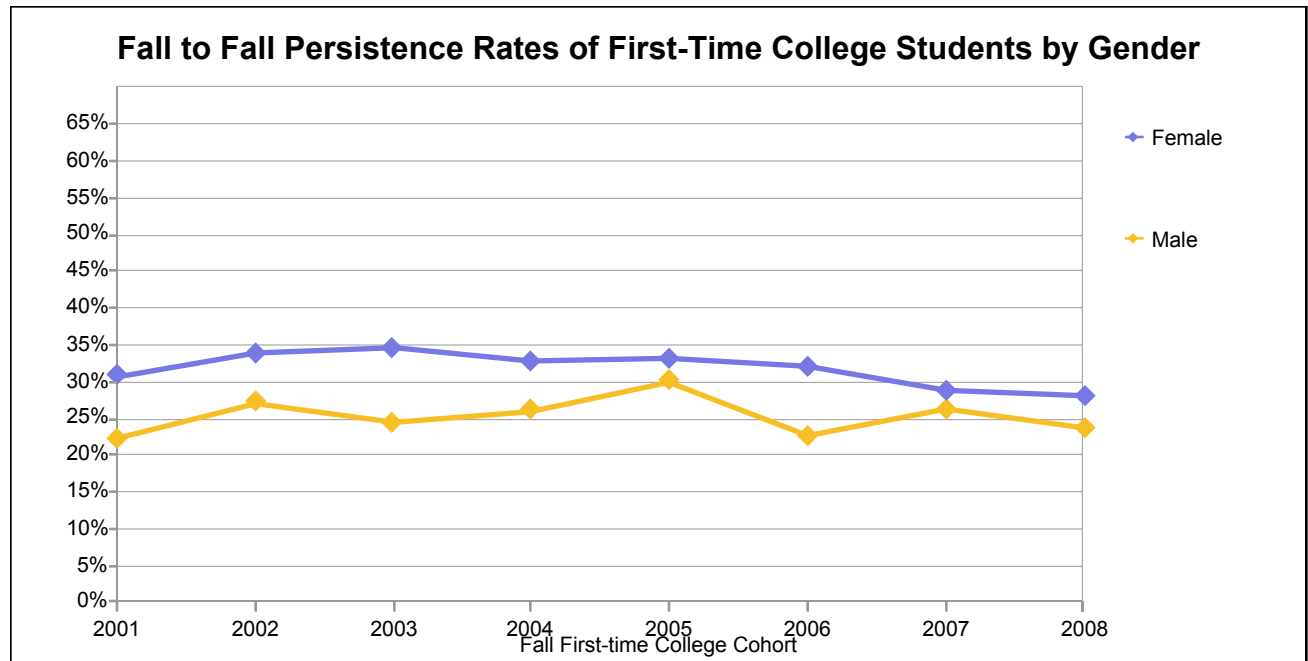


Fall to Fall Persistence Rates of First-time College Students at Merritt College

Fall Term First-time College Cohort	Number in the First-time College Cohort Enrolled at Fall Census at the College	Number of the Cohort Persisting to the Following Fall Opening Day at the College	Percentage of the Cohort Persisting to the Following Fall Opening Day at the College
2001	1,343	369	27%
2002	1,369	431	31%
2003	1,403	434	31%
2004	1,232	375	30%
2005	1,342	429	32%
2006	1,365	387	28%
2007	1,212	337	28%
2008	1,800	472	26%

Note: Persistence Rate is defined as the percentage of students enrolled in at least one class at fall census of the cohort year who were then enrolled in at least one class on the following fall opening day at the same college.

Merritt College



Number in the First-Time College Cohort Enrolled at Fall Census by Gender at Merritt College

Cohort	Female	Male	Unknown	Total
2001	796	518	29	1,343
2002	863	485	21	1,369
2003	905	464	34	1,403
2004	778	414	40	1,232
2005	844	489	9	1,342
2006	828	535	2	1,365
2007	736	476		1,212
2008	1,066	604	130	1,800

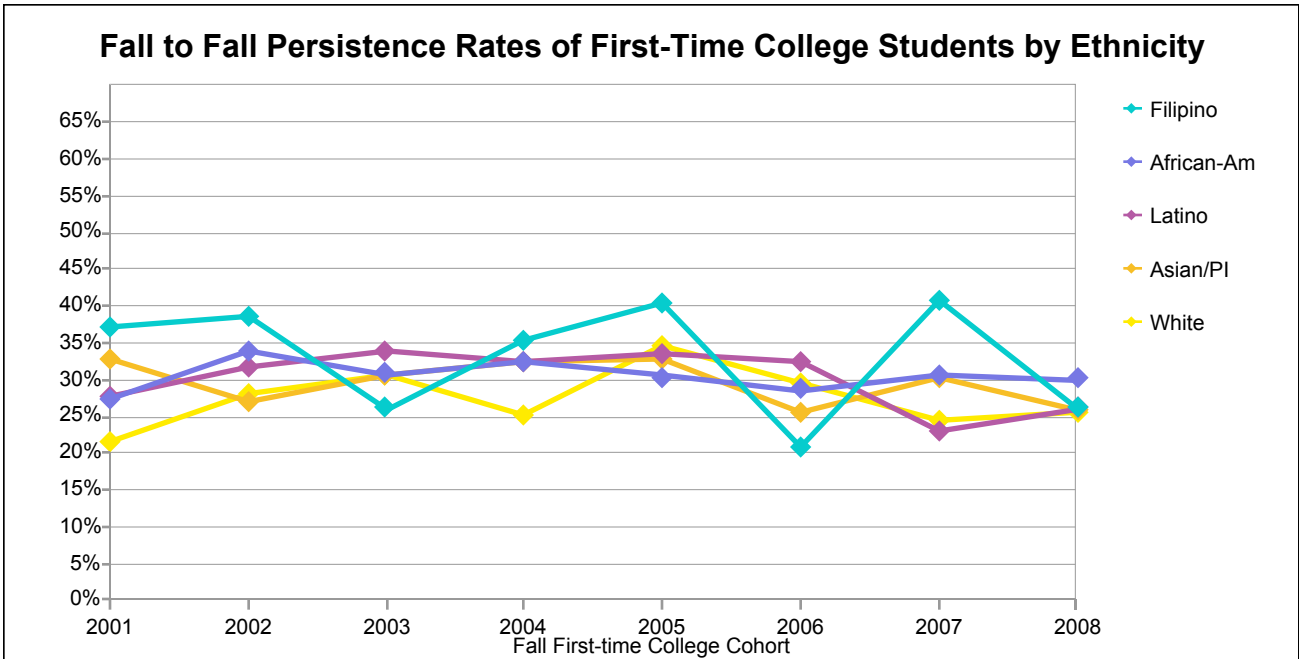
Number of the Cohort Persisting to the Following Fall Opening Day by Gender at Merritt College

Cohort	Female	Male	Unknown	Total
2001	796	518	29	1,343
2002	863	485	21	1,369
2003	312	114	8	434
2004	255	108	12	375
2005	281	147	1	429
2006	265	121	1	387
2007	212	125		337
2008	298	144	30	472

Percentage of the Cohort Persisting to the Following Fall Opening Day by Gender at Merritt College

Cohort	Female	Male	Unknown	Total
2001	31	22	31	27
2002	34	27	29	31
2003	34	25	24	31
2004	33	26	30	30
2005	33	30	11	32
2006	32	23	50	28
2007	29	26		28
2008	28	24	23	26

Merritt College



Number in the First-Time College Cohort Enrolled at Fall Census by Ethnicity at Merritt College

Cohort	African-Am	Asian/PI	Filipino	Latino	Other/Unkwn	White	Total
2001	481	161	35	324	111	231	1,343
2002	486	201	44	306	125	207	1,369
2003	542	160	46	301	139	215	1,403
2004	490	154	37	255	138	158	1,232
2005	529	177	47	304	92	193	1,342
2006	566	144	43	288	117	207	1,365
2007	525	129	27	268	95	168	1,212
2008	549	186	53	361	281	370	1,800

Number of the Cohort Persisting to the Following Fall Opening Day by Ethnicity at Merritt College

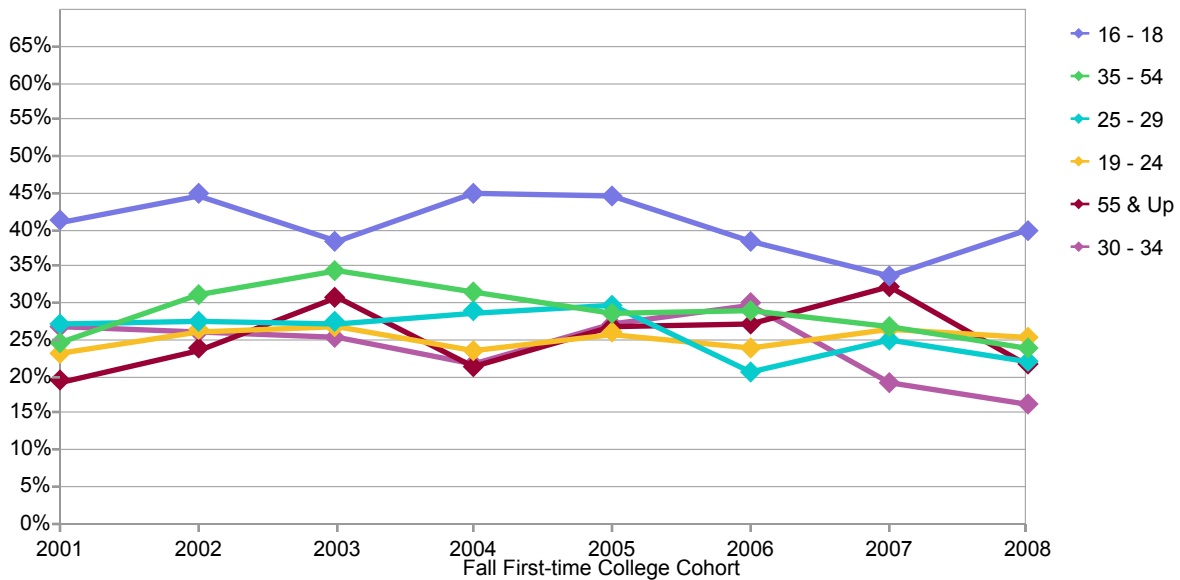
Cohort	African-Am	Asian/PI	Filipino	Latino	Other/Unkwn	White	Total
2001	131	53	13	90	32	50	369
2002	164	54	17	97	41	58	431
2003	167	49	12	102	38	66	434
2004	159	50	13	83	30	40	375
2005	161	58	19	102	22	67	429
2006	162	37	9	93	25	61	387
2007	160	39	11	62	24	41	337
2008	165	48	14	94	56	95	472

Percentage of the Cohort Persisting to the Following Fall Opening Day by Ethnicity at Merritt College

Cohort	African-Am	Asian/PI	Filipino	Latino	Other/Unkwn	White	Total
2001	27	33	37	28	29	22	27
2002	34	27	39	32	33	28	31
2003	31	31	26	34	27	31	31
2004	32	32	35	33	22	25	30
2005	30	33	40	34	24	35	32
2006	29	26	21	32	21	29	28
2007	30	30	41	23	25	24	28
2008	30	26	26	26	20	26	26

Merritt College

Fall to Fall Persistence Rates of First-Time College Students by Age Group



Number in the First-Time College Cohort Enrolled at Fall Census by Age Group at Merritt College

Cohort	16 - 18	19 - 24	25 - 29	30 - 34	35 - 54	55 & Up	Total
2001	243	461	169	145	263	62	1,343
2002	310	441	160	119	280	59	1,369
2003	334	503	161	115	248	42	1,403
2004	291	448	153	97	215	28	1,232
2005	369	518	142	88	195	30	1,342
2006	317	504	164	117	230	33	1,365
2007	320	448	128	109	176	31	1,212
2008	334	575	280	155	359	97	1,800

Number of the Cohort Persisting to the Following Fall Opening Day by Age Group at Merritt College

Cohort	16 - 18	19 - 24	25 - 29	30 - 34	35 - 54	55 & Up	Total
2001	100	107	46	39	65	12	369
2002	139	116	44	31	87	14	431
2003	129	134	44	29	85	13	434
2004	131	105	44	21	68	6	375
2005	165	134	42	24	56	8	429
2006	122	120	34	35	67	9	387
2007	108	119	32	21	47	10	337
2008	133	145	62	25	86	21	472

Percentage of the Cohort Persisting to the Following Fall Opening Day by Age Group at Merritt College

Cohort	16 - 18	19 - 24	25 - 29	30 - 34	35 - 54	55 & Up	Total
2001	41	23	27	27	25	19	27
2002	45	26	28	26	31	24	31
2003	39	27	27	25	34	31	31
2004	45	23	29	22	32	21	30
2005	45	26	30	27	29	27	32
2006	38	24	21	30	29	27	28
2007	34	27	25	19	27	32	28
2008	40	25	22	16	24	22	26