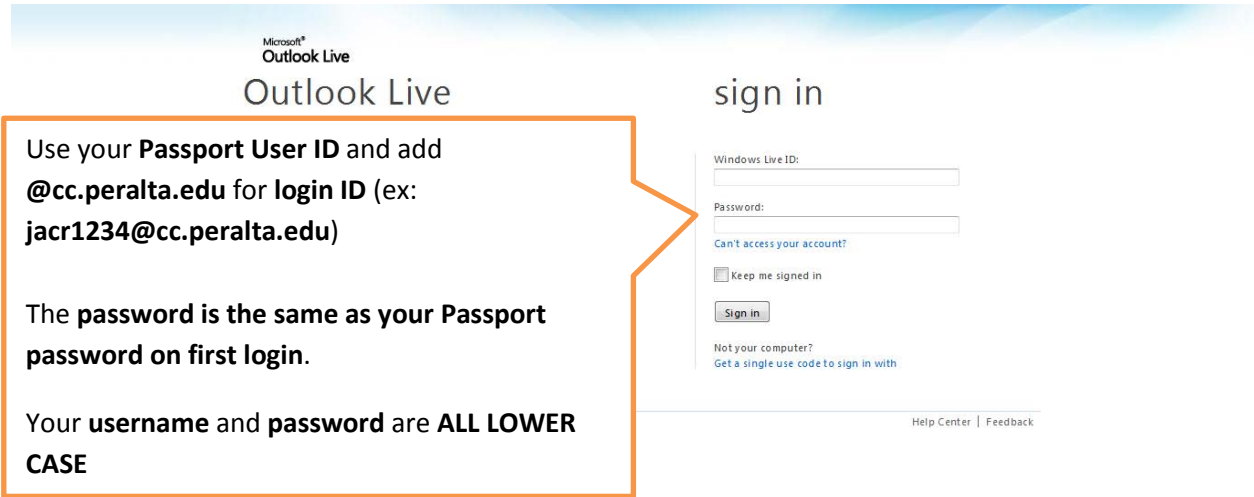


Your Student Email

How to log in:

Go to www.outlook.com



Microsoft® Outlook Live

Outlook Live

sign in

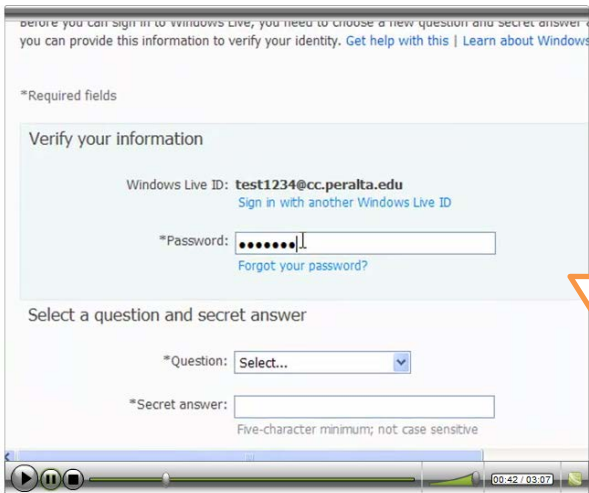
Windows Live ID:
Password:
Can't access your account?
 Keep me signed in
Sign in
Not your computer?
[Get a single use code to sign in with](#)

Help Center | Feedback

Use your **Passport User ID** and add **@cc.peralta.edu** for **login ID** (ex: **jacr1234@cc.peralta.edu**)

The **password** is the same as your **Passport password** on first login.

Your **username** and **password** are **ALL LOWER CASE**



Verify your information

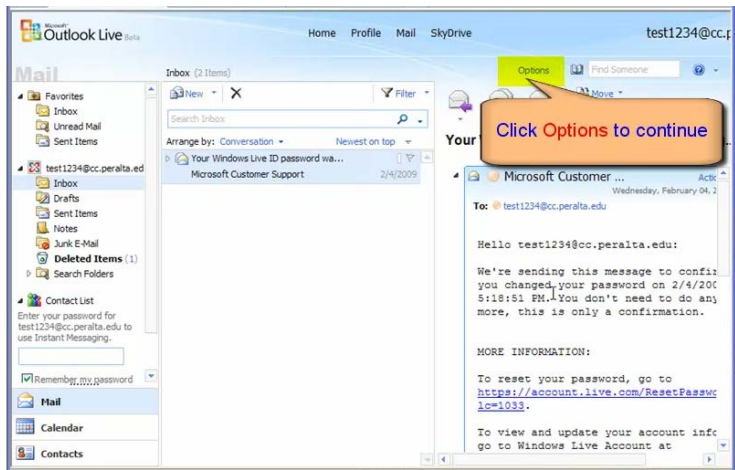
Windows Live ID: test1234@cc.peralta.edu
Sign in with another Windows Live ID

*Password: [masked]
[Forgot your password?](#)

Select a question and secret answer

*Question: Select...
*Secret answer: [input field]
Five-character minimum; not case sensitive

The first time you log in to your student email you will be asked to input some information, such as a secret question and an alternative email. It is important to set this up, as you can use this if you forget your password to your Peralta email account and need to get log in information to reset your password



Outlook Live

Home Profile Mail SkyDrive test1234@cc.p

Mail

Inbox (2 items)

Search: Your Windows Live ID password wa...
Microsoft Customer Support

Options

Click Options to continue

Microsoft Customer Support

To: test1234@cc.peralta.edu

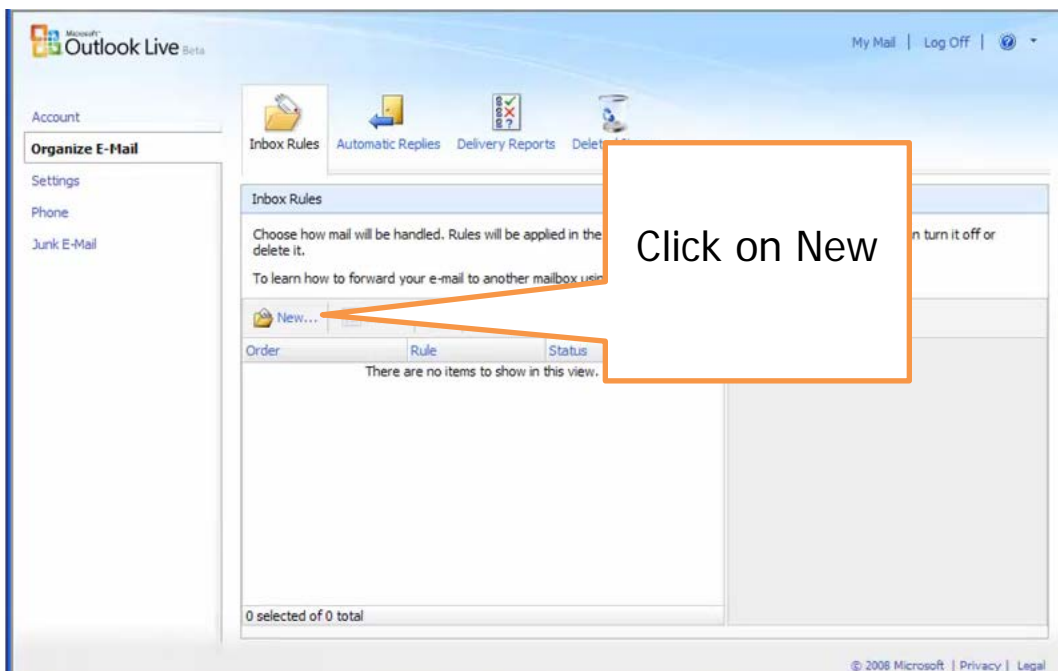
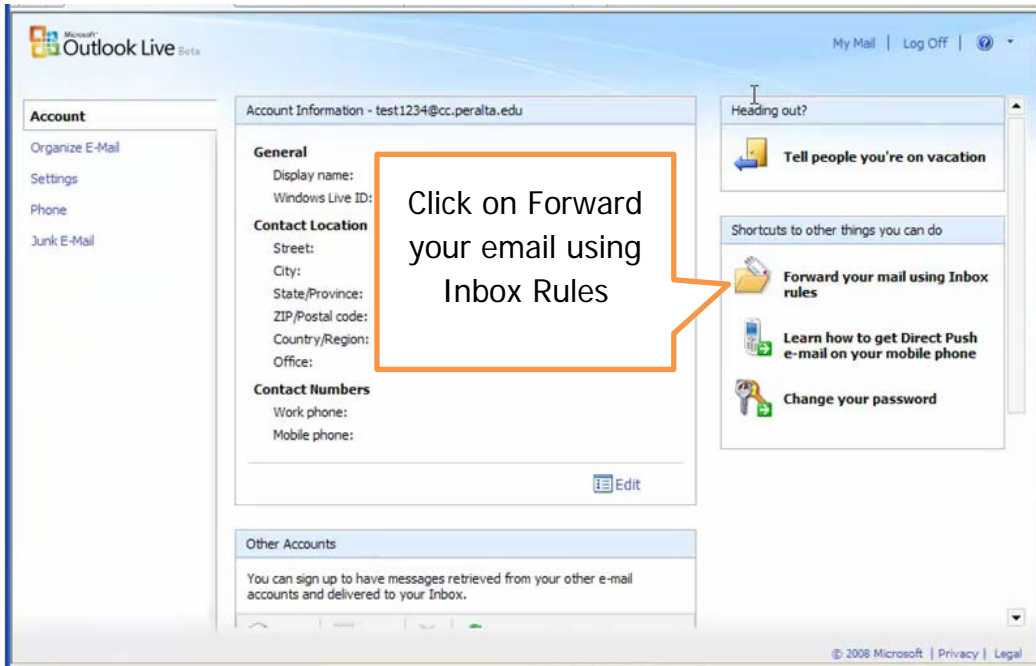
Hello test1234@cc.peralta.edu:

We're sending this message to confirm you changed your password on 2/4/2009 5:18:51 PM. You don't need to do anything more, this is only a confirmation.

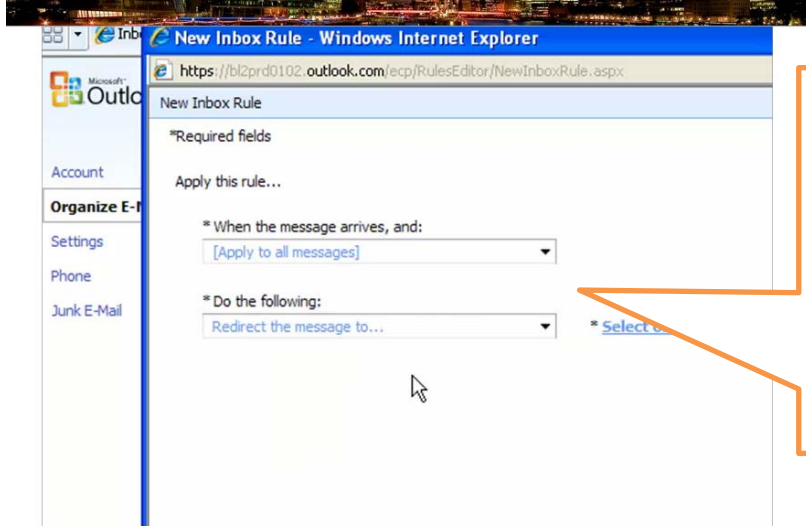
MORE INFORMATION:

To reset your password, go to <https://account.live.com/ResetPassword?ic=1033>.

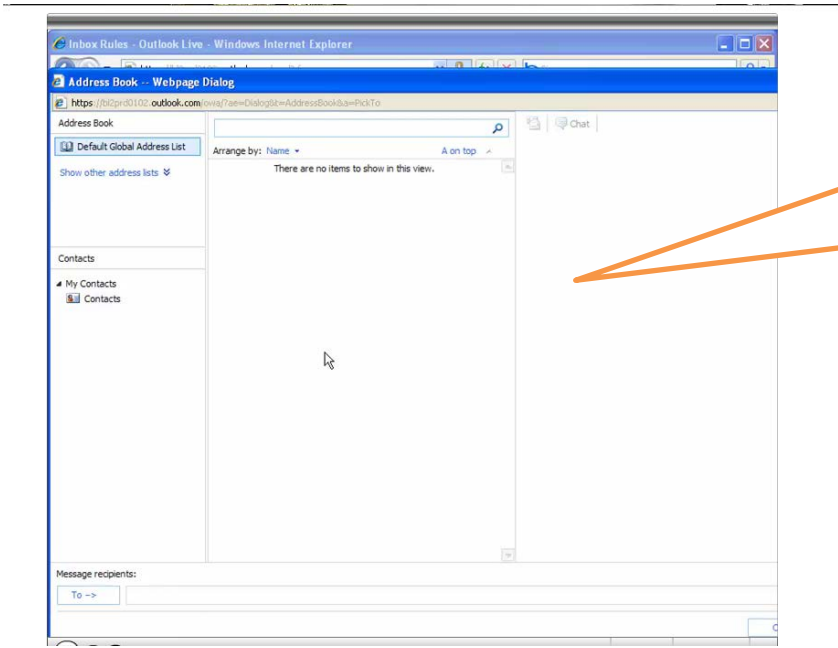
To view and update your account info, go to Windows Live Account at



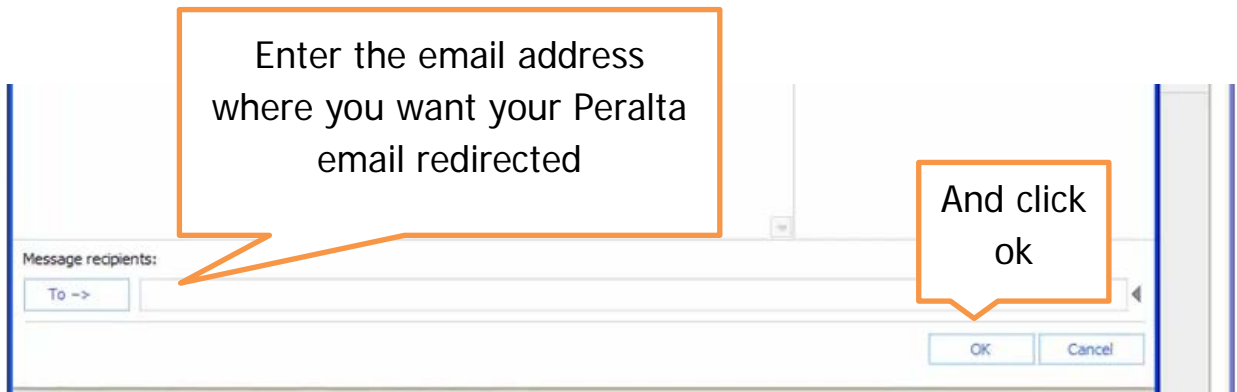
For the new rule you are creating choose:



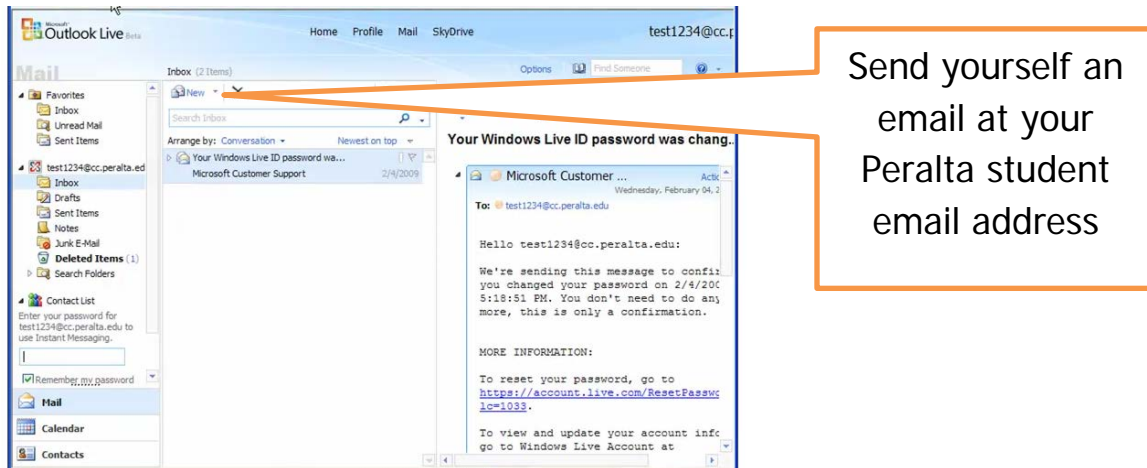
Apply to All Messages
And
Redirect the message to...



You will be
redirected to
this address
book screen



You are almost done! But first, test your email redirect!



You should receive the message in your student email account AND in the email address where you have redirected your email.

