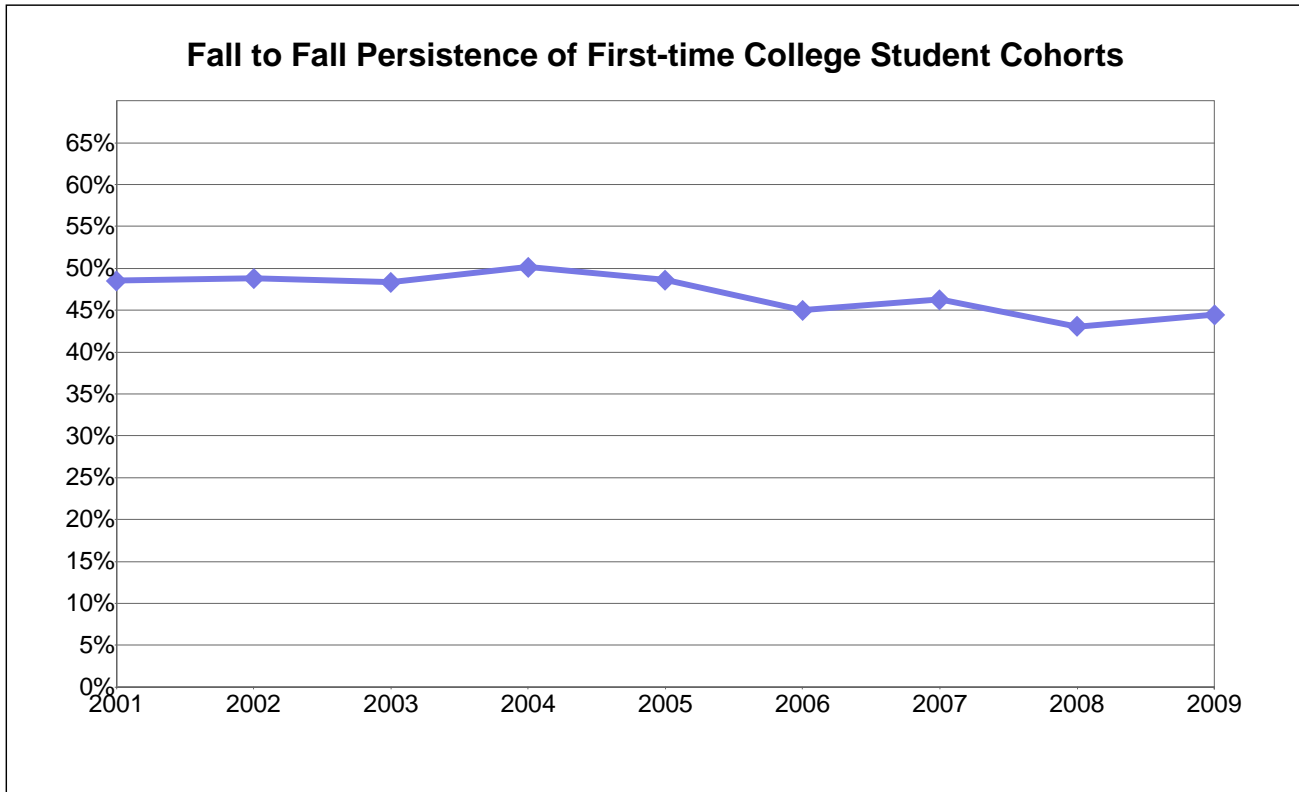


College of Alameda



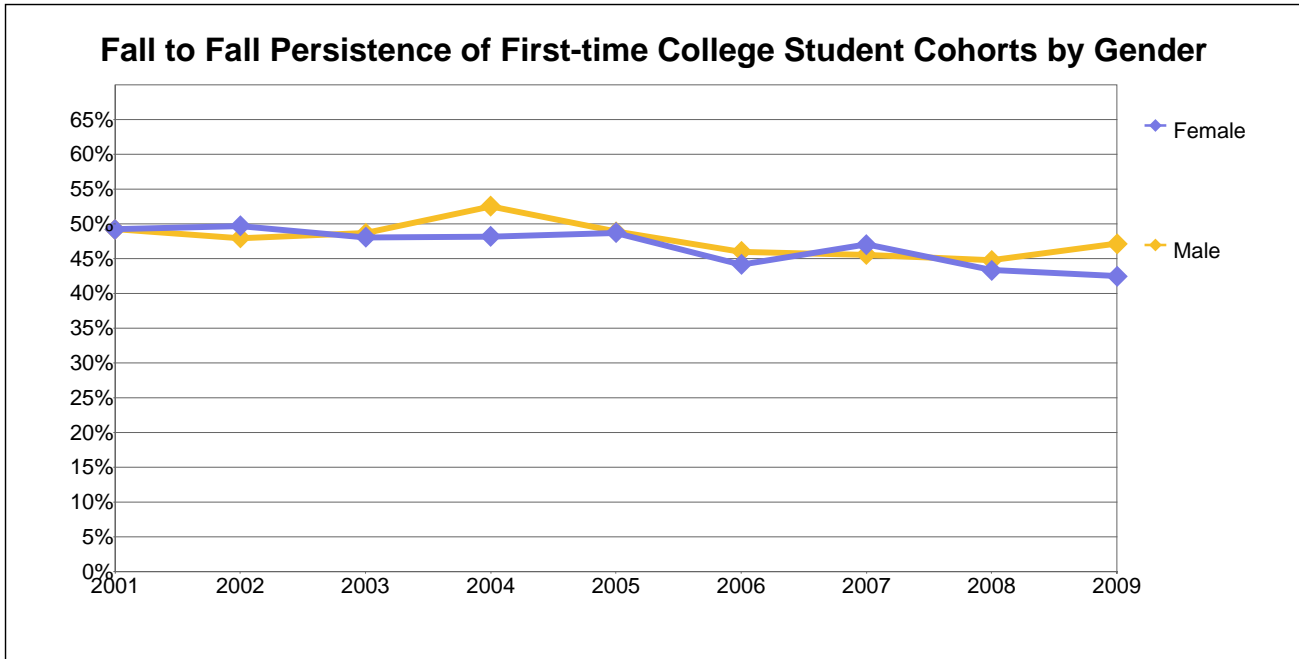
Fall to Fall Persistence Rates of First-time College Students at College of Alameda

Fall Term Cohort	Number of Students Enrolled at Fall Census at the College	Number Persisting to the Following Fall Opening Day within the District	Percentage Persisting to the Following Fall Opening Day within the District
2001	1,243	603	49%
2002	1,273	621	49%
2003	1,245	602	48%
2004	1,063	533	50%
2005	1,158	563	49%
2006	1,295	583	45%
2007	1,319	610	46%
2008	1,689	727	43%
2009	2,002	890	44%



Note: Persistence Rate is defined as the percentage of students enrolled in at least one class at fall census of the cohort year who were then enrolled in at least one class on the following fall opening day within the district.

College of Alameda



Number of First-time College Fall Students Enrolled at Census by Gender at College of Alameda

Cohort	Female	Male	Unknown	Total
2001	598	616	29	1,243
2002	616	632	25	1,273
2003	593	621	31	1,245
2004	517	524	22	1,063
2005	567	585	6	1,158
2006	646	648	1	1,295
2007	653	665	1	1,319
2008	840	771	78	1,689
2009	1,022	895	85	2,002

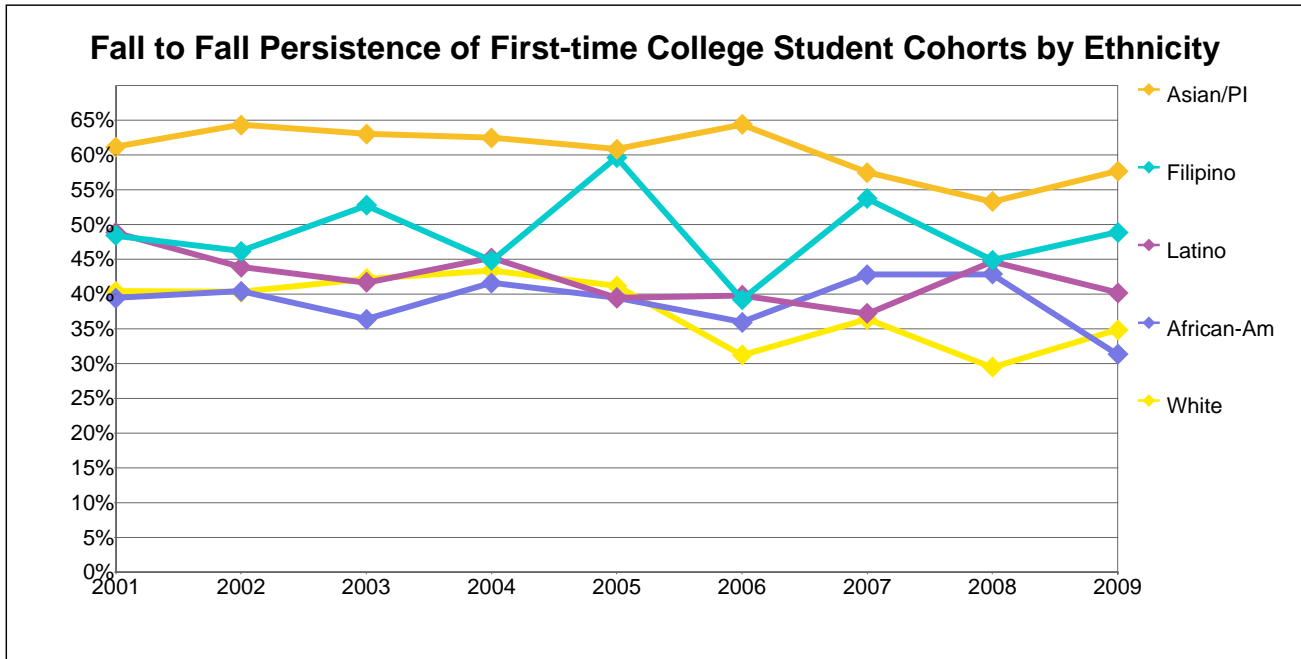
Number of the Cohort Persisting to the Following Fall Opening Day by Gender within the District

Cohort	Female	Male	Unknown	Total
2001	294	303	6	603
2002	306	303	12	621
2003	285	302	15	602
2004	249	275	9	533
2005	276	286	1	563
2006	285	298	0	583
2007	307	303	0	610
2008	364	345	18	727
2009	434	422	34	890

Percentage of the Cohort Persisting to the Following Fall Opening Day by Gender within the District

Cohort	Female	Male	Unknown	Total
2001	49%	49%	21%	49%
2002	50%	48%	48%	49%
2003	48%	49%	48%	48%
2004	48%	52%	41%	50%
2005	49%	49%	17%	49%
2006	44%	46%	0%	45%
2007	47%	46%	0%	46%
2008	43%	45%	23%	43%
2009	42%	47%	40%	44%

College of Alameda



Number of First-time College Fall Students Enrolled at Census by Ethnicity at College of Alameda

Cohort	African-	Asian/PI	Filipino	Latino	Other/Unkwn	White	Total
2001	312	386	62	168	107	208	1,243
2002	307	403	78	187	87	211	1,273
2003	297	424	55	173	104	192	1,245
2004	243	338	67	155	87	173	1,063
2005	314	375	52	165	94	158	1,158
2006	323	384	74	201	108	205	1,295
2007	374	397	54	207	100	187	1,319
2008	397	460	87	226	251	268	1,689
2009	252	319	45	107	1,124	155	2,002

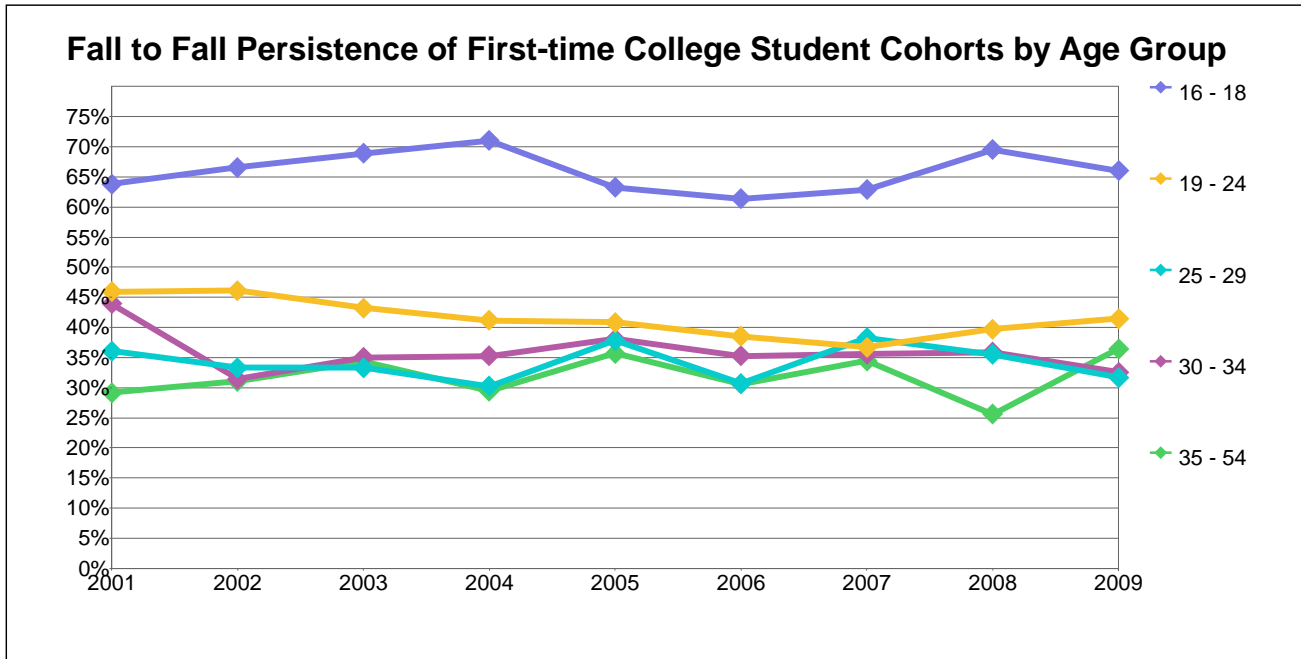
Number of the Cohort Persisting to the Following Fall Opening Day by Gender within the District

Cohort	African-	Asian/PI	Filipino	Latino	Other/Unkwn	White	Total
2001	123	236	30	82	48	84	603
2002	124	259	36	82	35	85	621
2003	108	267	29	72	45	81	602
2004	101	211	30	70	46	75	533
2005	124	228	31	65	50	65	563
2006	116	247	29	80	47	64	583
2007	160	228	29	77	48	68	610
2008	170	245	39	101	93	79	727
2009	79	184	22	43	508	54	890

Percentage of the Cohort Persisting to the Following Fall Opening Day by Gender within the District

Cohort	African-	Asian/PI	Filipino	Latino	Other/Unkwn	White	Total
2001	39%	61%	48%	49%	45%	40%	49%
2002	40%	64%	46%	44%	40%	40%	49%
2003	36%	63%	53%	42%	43%	42%	48%
2004	42%	62%	45%	45%	53%	43%	50%
2005	39%	61%	60%	39%	53%	41%	49%
2006	36%	64%	39%	40%	44%	31%	45%
2007	43%	57%	54%	37%	48%	36%	46%
2008	43%	53%	45%	45%	37%	29%	43%
2009	31%	58%	49%	40%	45%	35%	44%

College of Alameda



Number of First-time College Fall Students Enrolled at Census by Age Group at College of Alameda

Cohort	16 - 18	19 - 24	25 - 29	30 - 34	35 - 54	55 & Up	Total
2001	398	507	122	66	120	30	1,243
2002	416	520	96	70	148	23	1,273
2003	386	504	117	80	131	27	1,245
2004	404	408	86	51	102	12	1,063
2005	441	416	103	63	98	37	1,158
2006	471	509	101	68	124	22	1,295
2007	482	526	115	59	119	18	1,319
2008	381	665	231	117	250	45	1,689
2009	492	786	290	135	255	44	2,002

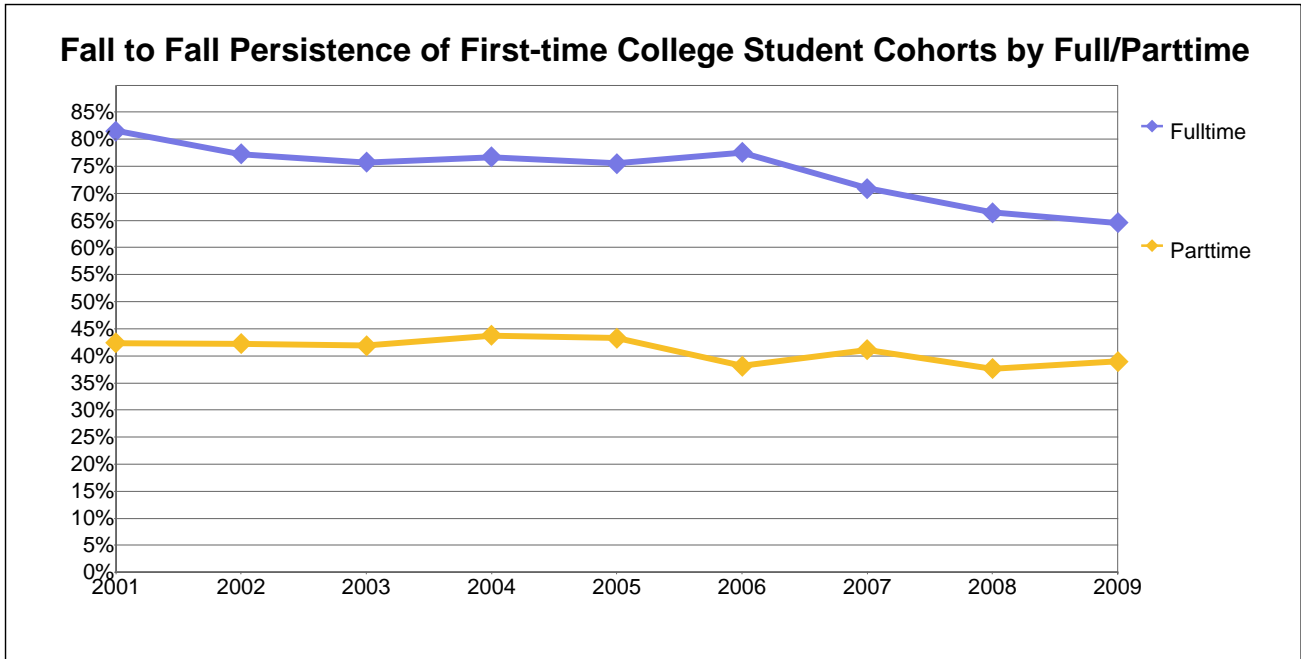
Number of the Cohort Persisting to the Following Fall Opening Day by Gender within the District

Cohort	16 - 18	19 - 24	25 - 29	30 - 34	35 - 54	55 & Up	Total
2001	254	233	44	29	35	8	603
2002	277	240	32	22	46	4	621
2003	266	218	39	28	45	6	602
2004	287	168	26	18	30	4	533
2005	279	170	39	24	35	16	563
2006	289	196	31	24	38	5	583
2007	303	193	44	21	41	8	610
2008	265	264	82	42	64	10	727
2009	325	326	92	44	93	10	890

Percentage of the Cohort Persisting to the Following Fall Opening Day by Gender within the District

Cohort	16 - 18	19 - 24	25 - 29	30 - 34	35 - 54	55 & Up	Total
2001	64%	46%	36%	44%	29%	27%	49%
2002	67%	46%	33%	31%	31%	17%	49%
2003	69%	43%	33%	35%	34%	22%	48%
2004	71%	41%	30%	35%	29%	33%	50%
2005	63%	41%	38%	38%	36%	43%	49%
2006	61%	39%	31%	35%	31%	23%	45%
2007	63%	37%	38%	36%	34%	44%	46%
2008	70%	40%	35%	36%	26%	22%	43%
2009	66%	41%	32%	33%	36%	23%	44%

College of Alameda



Number of First-time College Fall Students Enrolled at Census by Age Group at College of Alameda

Cohort	Fulltime	Parttime	Total
2001	195	1,048	1,243
2002	238	1,035	1,273
2003	239	1,006	1,245
2004	206	857	1,063
2005	192	966	1,158
2006	227	1,068	1,295
2007	227	1,092	1,319
2008	319	1,370	1,689
2009	432	1,570	2,002

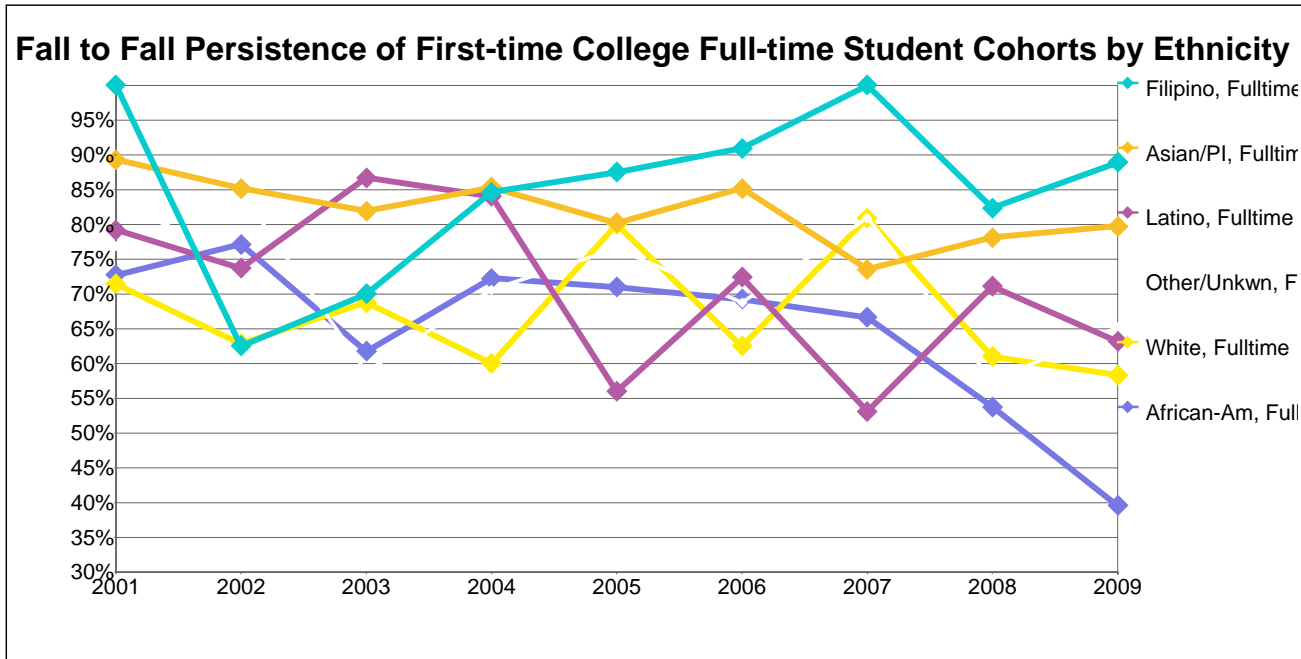
Number of the Cohort Persisting to the Following Fall Opening Day by Gender within the District

Cohort	Fulltime	Parttime	Total
2001	159	444	603
2002	184	437	621
2003	181	421	602
2004	158	375	533
2005	145	418	563
2006	176	407	583
2007	161	449	610
2008	212	515	727
2009	279	611	890

Percentage of the Cohort Persisting to the Following Fall Opening Day by Gender within the District

Cohort	Fulltime	Parttime	Total
2001	82%	42%	49%
2002	77%	42%	49%
2003	76%	42%	48%
2004	77%	44%	50%
2005	76%	43%	49%
2006	78%	38%	45%
2007	71%	41%	46%
2008	66%	38%	43%
2009	65%	39%	44%

College of Alameda



Number of Fall First-time College Full-time Students Enrolled at Census by Ethnicity at College of Alameda

Cohort	African-	Asian/PI	Filipino	Latino	Other/Unkwn	White	Total
2001	33	84	6	24	13	35	195
2002	35	101	16	38	13	35	238
2003	34	116	10	30	17	32	239
2004	36	75	13	25	17	40	206
2005	31	91	8	25	17	20	192
2006	39	108	11	29	16	24	227
2007	60	87	6	32	21	21	227
2008	80	96	17	45	40	41	319
2009	53	74	9	19	253	24	432

Number of the Cohort Persisting to the Following Fall Opening Day by Gender within the District

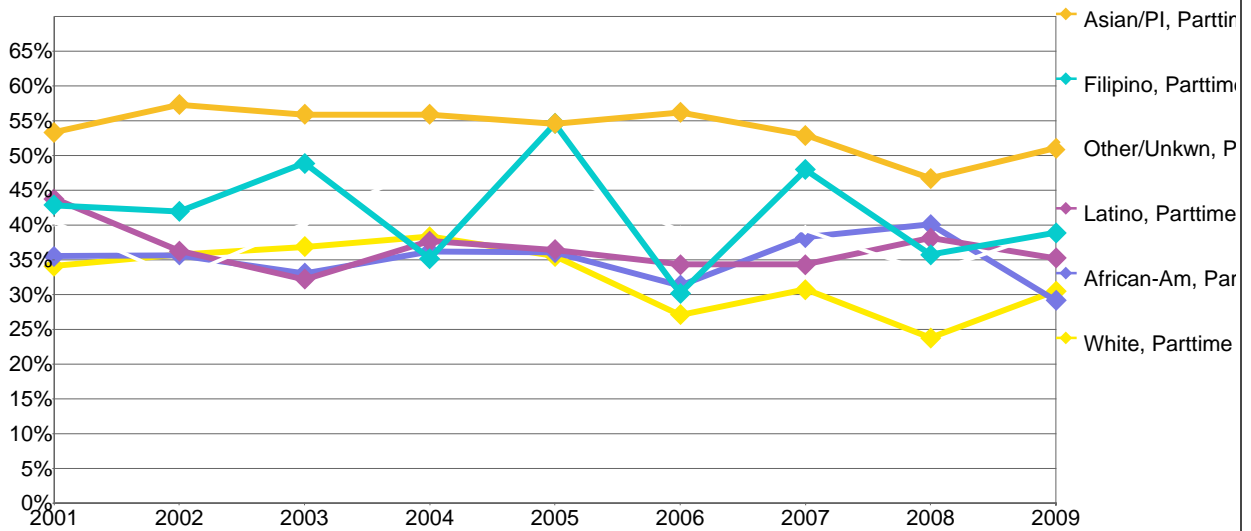
Cohort	African-	Asian/PI	Filipino	Latino	Other/Unkwn	White	Total
2001	24	75	6	19	10	25	159
2002	27	86	10	28	11	22	184
2003	21	95	7	26	10	22	181
2004	26	64	11	21	12	24	158
2005	22	73	7	14	13	16	145
2006	27	92	10	21	11	15	176
2007	40	64	6	17	17	17	161
2008	43	75	14	32	23	25	212
2009	21	59	8	12	165	14	279

Percentage of the Cohort Persisting to the Following Fall Opening Day by Gender within the District

Cohort	African-	Asian/PI	Filipino	Latino	Other/Unkwn	White	Total
2001	73%	89%	100%	79%	77%	71%	82%
2002	77%	85%	63%	74%	85%	63%	77%
2003	62%	82%	70%	87%	59%	69%	76%
2004	72%	85%	85%	84%	71%	60%	77%
2005	71%	80%	88%	56%	76%	80%	76%
2006	69%	85%	91%	72%	69%	63%	78%
2007	67%	74%	100%	53%	81%	81%	71%
2008	54%	78%	82%	71%	58%	61%	66%
2009	40%	80%	89%	63%	65%	58%	65%

College of Alameda

Fall to Fall Persistence of First-time College Part-time Student Cohorts by Ethnicity



Number of Fall First-time College Part-time Students Enrolled at Census by Ethnicity at College of Alameda

Cohort	African-	Asian/PI	Filipino	Latino	Other/Unkwn	White	Total
2001	279	302	56	144	94	173	1,048
2002	272	302	62	149	74	176	1,035
2003	263	308	45	143	87	160	1,006
2004	207	263	54	130	70	133	857
2005	283	284	44	140	77	138	966
2006	284	276	63	172	92	181	1,068
2007	314	310	48	175	79	166	1,092
2008	317	364	70	181	211	227	1,370
2009	199	245	36	88	871	131	1,570

Number of the Cohort Persisting to the Following Fall Opening Day by Gender within the District

Cohort	African-	Asian/PI	Filipino	Latino	Other/Unkwn	White	Total
2001	99	161	24	63	38	59	444
2002	97	173	26	54	24	63	437
2003	87	172	22	46	35	59	421
2004	75	147	19	49	34	51	375
2005	102	155	24	51	37	49	418
2006	89	155	19	59	36	49	407
2007	120	164	23	60	31	51	449
2008	127	170	25	69	70	54	515
2009	58	125	14	31	343	40	611

Percentage of the Cohort Persisting to the Following Fall Opening Day by Gender within the District

Cohort	African-	Asian/PI	Filipino	Latino	Other/Unkwn	White	Total
2001	35%	53%	43%	44%	40%	34%	42%
2002	36%	57%	42%	36%	32%	36%	42%
2003	33%	56%	49%	32%	40%	37%	42%
2004	36%	56%	35%	38%	49%	38%	44%
2005	36%	55%	55%	36%	48%	36%	43%
2006	31%	56%	30%	34%	39%	27%	38%
2007	38%	53%	48%	34%	39%	31%	41%
2008	40%	47%	36%	38%	33%	24%	38%
2009	29%	51%	39%	35%	39%	31%	39%