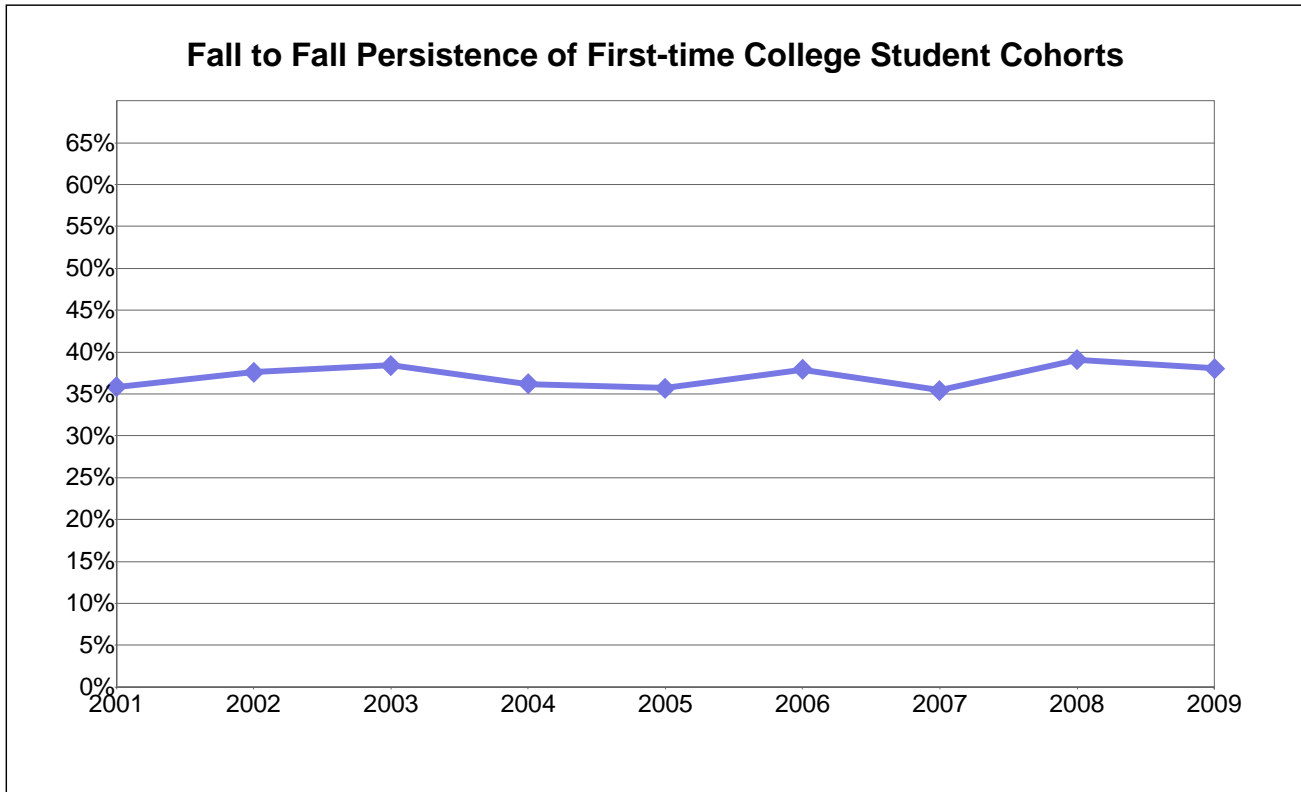


**Berkeley City College**

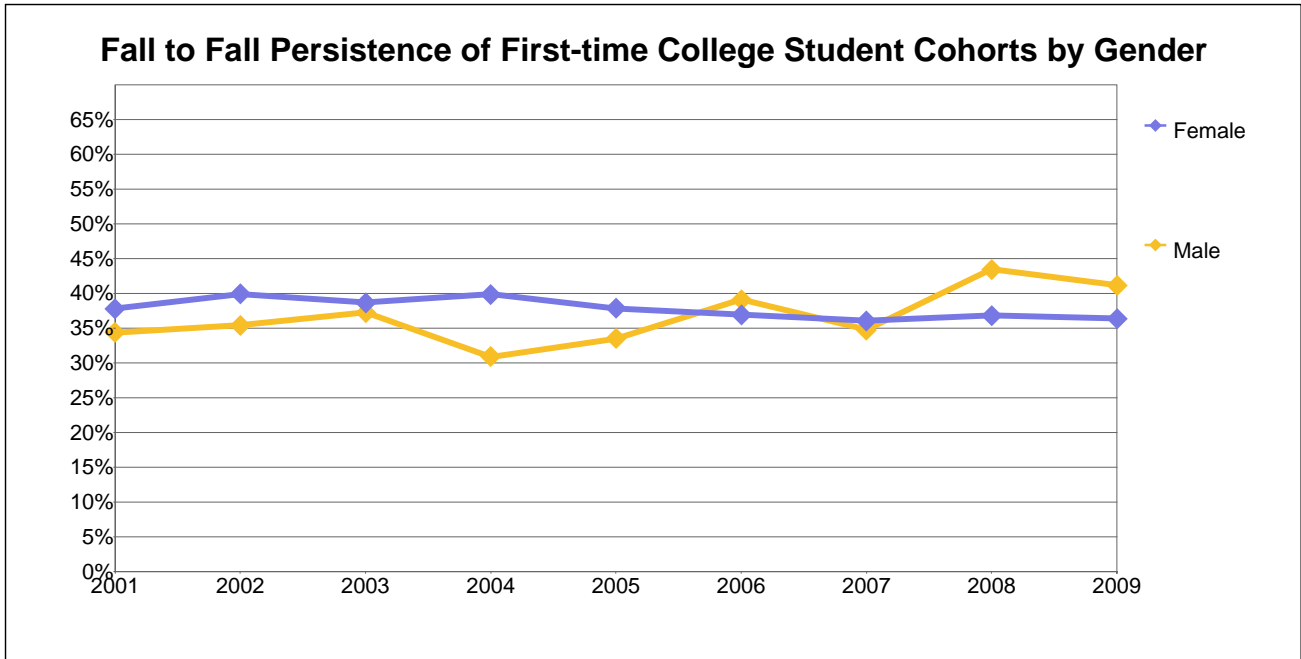


**Fall to Fall Persistence Rates of First-time College Students at Berkeley City College**

Fall Term Cohort	Number of Students Enrolled at Fall Census at the College	Number Persisting to the Following Fall Opening Day within the District	Percentage Persisting to the Following Fall Opening Day within the District
2001	896	321	36%
2002	912	343	38%
2003	828	318	38%
2004	815	295	36%
2005	874	312	36%
2006	1,016	385	38%
2007	1,357	481	35%
2008	2,206	862	39%
2009	2,343	891	38%

Note: Persistence Rate is defined as the percentage of students enrolled in at least one class at fall census of the cohort year who were then enrolled in at least one class on the following fall opening day within the district.

**Berkeley City College**



**Number of First-time College Fall Students Enrolled at Census by Gender at Berkeley City College**

Cohort	Female	Male	Unknown	Total
2001	490	378	28	896
2002	514	370	28	912
2003	437	349	42	828
2004	429	340	46	815
2005	468	403	3	874
2006	534	481	1	1,016
2007	760	596	1	1,357
2008	1,218	889	99	2,206
2009	1,254	991	98	2,343

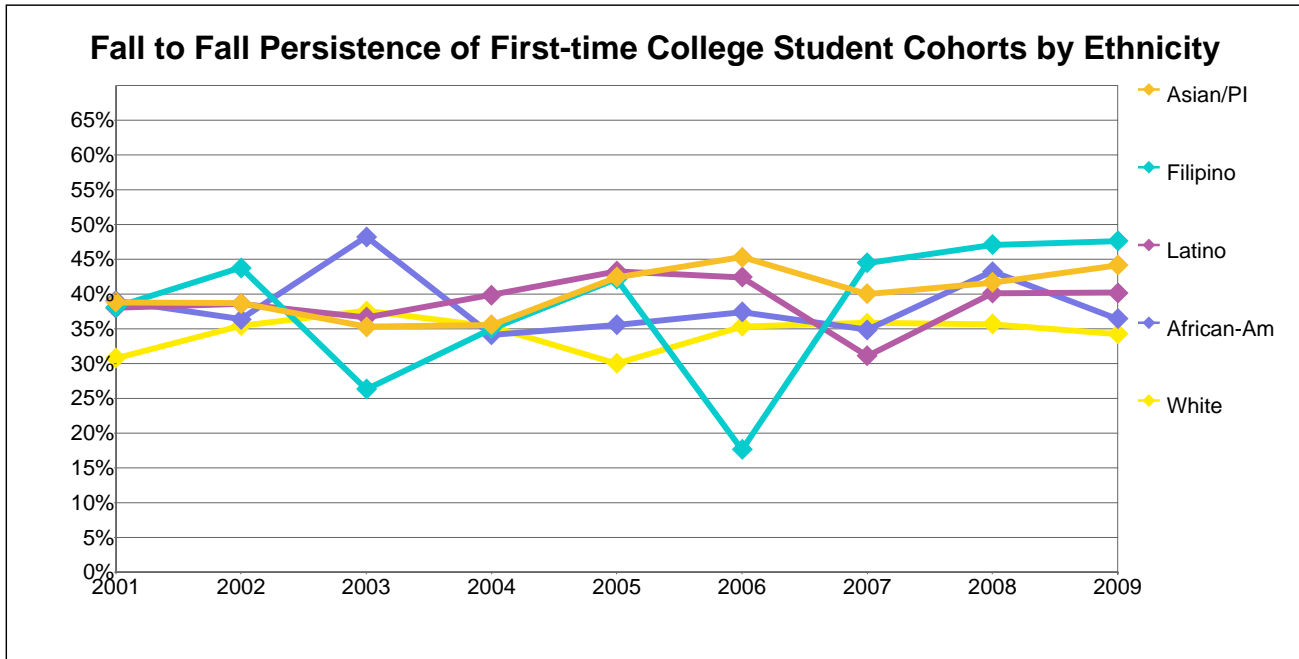
**Number of the Cohort Persisting to the Following Fall Opening Day by Gender within the District**

Cohort	Female	Male	Unknown	Total
2001	185	130	6	321
2002	205	131	7	343
2003	169	130	19	318
2004	171	105	19	295
2005	177	135	0	312
2006	197	188	0	385
2007	274	207	0	481
2008	448	386	28	862
2009	456	408	27	891

**Percentage of the Cohort Persisting to the Following Fall Opening Day by Gender within the District**

Cohort	Female	Male	Unknown	Total
2001	38%	34%	21%	36%
2002	40%	35%	25%	38%
2003	39%	37%	45%	38%
2004	40%	31%	41%	36%
2005	38%	33%	0%	36%
2006	37%	39%	0%	38%
2007	36%	35%	0%	35%
2008	37%	43%	28%	39%
2009	36%	41%	28%	38%

## Berkeley City College



**Number of First-time College Fall Students Enrolled at Census by Ethnicity at Berkeley City College**

Cohort	African-	Asian/PI	Filipino	Latino	Other/Unkwn	White	Total
2001	169	152	21	129	136	289	896
2002	198	163	16	127	143	265	912
2003	139	153	19	101	131	285	828
2004	170	121	20	128	141	235	815
2005	208	125	19	134	128	260	874
2006	222	159	17	125	159	334	1,016
2007	261	235	36	212	189	424	1,357
2008	347	425	68	324	425	617	2,206
2009	184	231	21	102	1,554	251	2,343

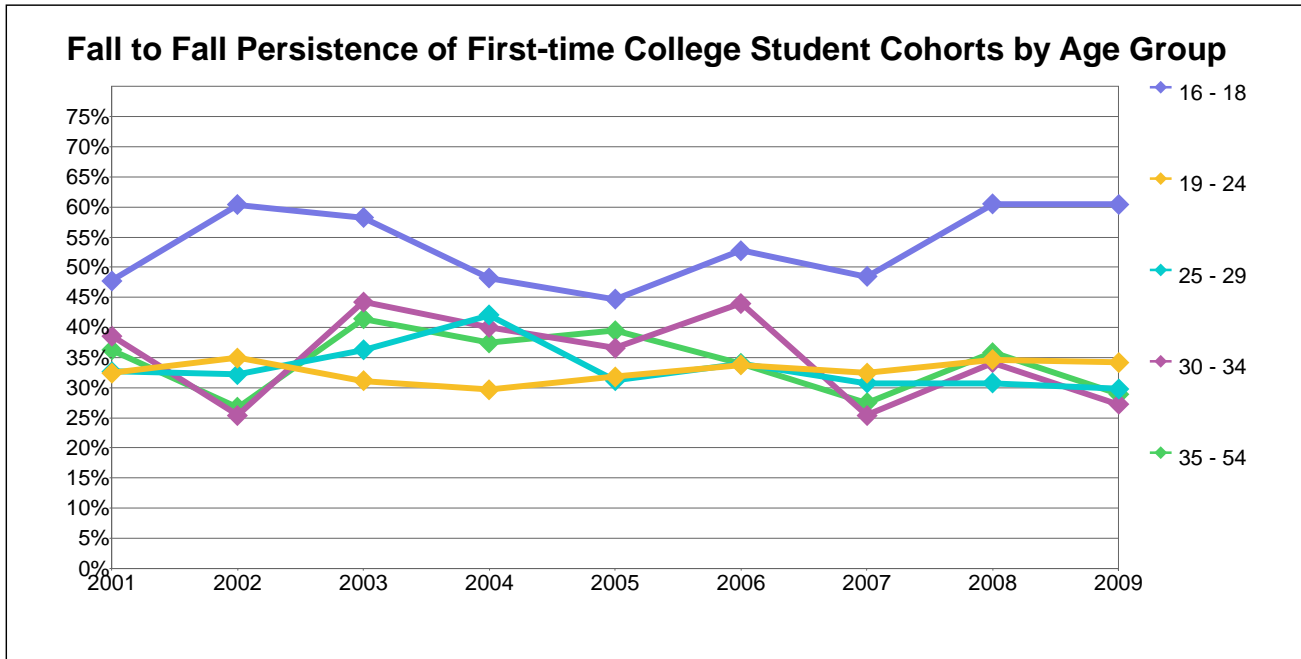
**Number of the Cohort Persisting to the Following Fall Opening Day by Gender within the District**

Cohort	African-	Asian/PI	Filipino	Latino	Other/Unkwn	White	Total
2001	66	59	8	49	50	89	321
2002	72	63	7	49	58	94	343
2003	67	54	5	37	48	107	318
2004	58	43	7	51	53	83	295
2005	74	53	8	58	41	78	312
2006	83	72	3	53	56	118	385
2007	91	94	16	66	62	152	481
2008	150	177	32	130	153	220	862
2009	67	102	10	41	585	86	891

**Percentage of the Cohort Persisting to the Following Fall Opening Day by Gender within the District**

Cohort	African-	Asian/PI	Filipino	Latino	Other/Unkwn	White	Total
2001	39%	39%	38%	38%	37%	31%	36%
2002	36%	39%	44%	39%	41%	35%	38%
2003	48%	35%	26%	37%	37%	38%	38%
2004	34%	36%	35%	40%	38%	35%	36%
2005	36%	42%	42%	43%	32%	30%	36%
2006	37%	45%	18%	42%	35%	35%	38%
2007	35%	40%	44%	31%	33%	36%	35%
2008	43%	42%	47%	40%	36%	36%	39%
2009	36%	44%	48%	40%	38%	34%	38%

## Berkeley City College



**Number of First-time College Fall Students Enrolled at Census by Age Group at Berkeley City College**

Cohort	16 - 18	19 - 24	25 - 29	30 - 34	35 - 54	55 & Up	Total
2001	155	475	107	57	91	11	896
2002	169	469	115	59	86	14	912
2003	158	434	102	52	70	12	828
2004	166	445	88	50	56	10	815
2005	188	456	93	41	81	15	874
2006	214	533	106	50	97	16	1,016
2007	328	693	143	63	120	10	1,357
2008	433	946	322	167	265	73	2,206
2009	498	1,020	332	158	259	76	2,343

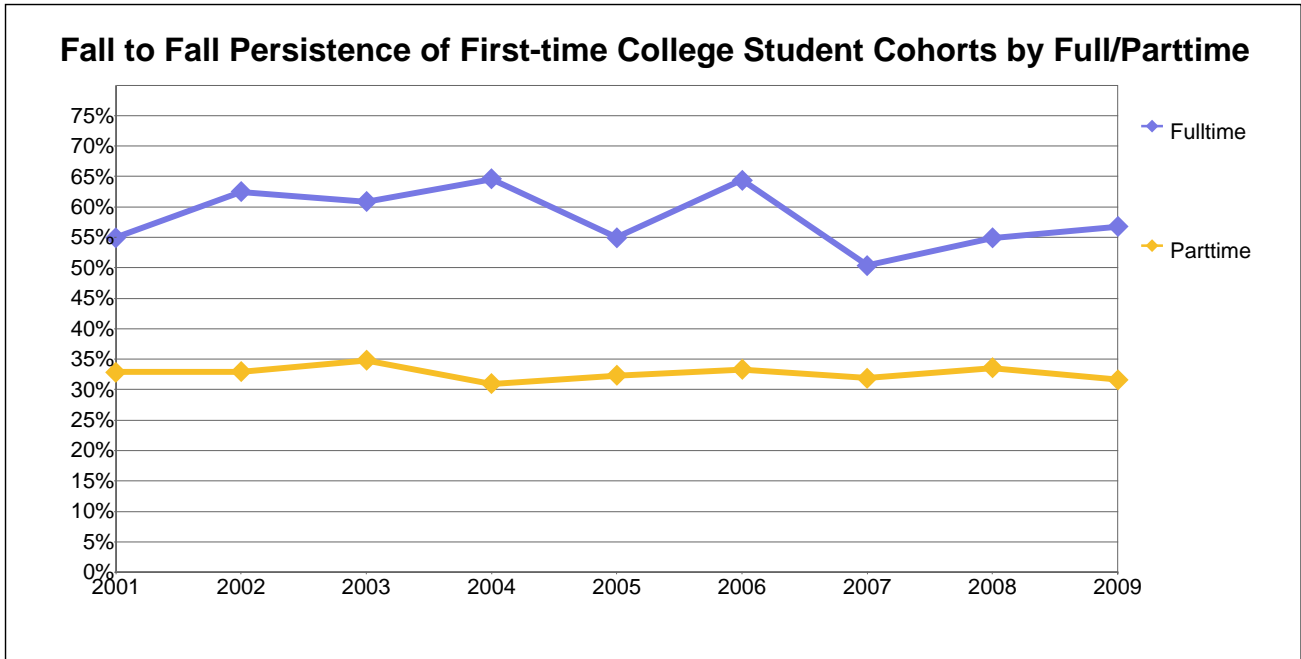
**Number of the Cohort Persisting to the Following Fall Opening Day by Gender within the District**

Cohort	16 - 18	19 - 24	25 - 29	30 - 34	35 - 54	55 & Up	Total
2001	74	154	35	22	33	3	321
2002	102	164	37	15	23	2	343
2003	92	135	37	23	29	2	318
2004	80	132	37	20	21	5	295
2005	84	145	29	15	32	7	312
2006	113	180	36	22	33	1	385
2007	159	225	44	16	33	4	481
2008	262	328	99	57	95	21	862
2009	301	349	99	43	75	24	891

**Percentage of the Cohort Persisting to the Following Fall Opening Day by Gender within the District**

Cohort	16 - 18	19 - 24	25 - 29	30 - 34	35 - 54	55 & Up	Total
2001	48%	32%	33%	39%	36%	27%	36%
2002	60%	35%	32%	25%	27%	14%	38%
2003	58%	31%	36%	44%	41%	17%	38%
2004	48%	30%	42%	40%	38%	50%	36%
2005	45%	32%	31%	37%	40%	47%	36%
2006	53%	34%	34%	44%	34%	6%	38%
2007	48%	32%	31%	25%	28%	40%	35%
2008	61%	35%	31%	34%	36%	29%	39%
2009	60%	34%	30%	27%	29%	32%	38%

## Berkeley City College



**Number of First-time College Fall Students Enrolled at Census by Age Group at Berkeley City College**

Cohort	Fulltime	Parttime	Total
2001	120	776	896
2002	144	768	912
2003	115	713	828
2004	127	688	815
2005	131	743	874
2006	149	867	1,016
2007	260	1,097	1,357
2008	570	1,636	2,206
2009	597	1,746	2,343

**Number of the Cohort Persisting to the Following Fall Opening Day by Gender within the District**

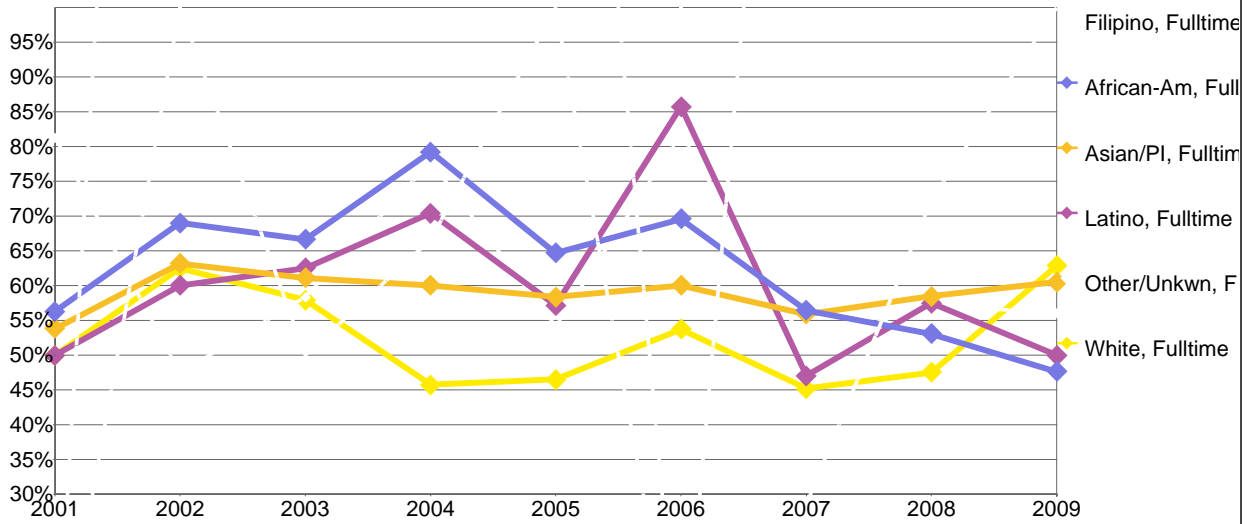
Cohort	Fulltime	Parttime	Total
2001	66	255	321
2002	90	253	343
2003	70	248	318
2004	82	213	295
2005	72	240	312
2006	96	289	385
2007	131	350	481
2008	313	549	862
2009	339	552	891

**Percentage of the Cohort Persisting to the Following Fall Opening Day by Gender within the District**

Cohort	Fulltime	Parttime	Total
2001	55%	33%	36%
2002	63%	33%	38%
2003	61%	35%	38%
2004	65%	31%	36%
2005	55%	32%	36%
2006	64%	33%	38%
2007	50%	32%	35%
2008	55%	34%	39%
2009	57%	32%	38%

## Berkeley City College

### Fall to Fall Persistence of First-time College Full-time Student Cohorts by Ethnicity



### Number of Fall First-time College Full-time Students Enrolled at Census by Ethnicity at Berkeley City College

Cohort	African-	Asian/PI	Filipino	Latino	Other/Unkwn	White	Total
2001	16	26	2	16	16	44	120
2002	29	38	3	15	19	40	144
2003	27	18	4	16	12	38	115
2004	24	20	3	27	18	35	127
2005	17	24	2	21	24	43	131
2006	23	35	1	14	22	54	149
2007	39	68	7	34	39	73	260
2008	98	130	18	94	89	141	570
2009	42	81	8	22	409	35	597

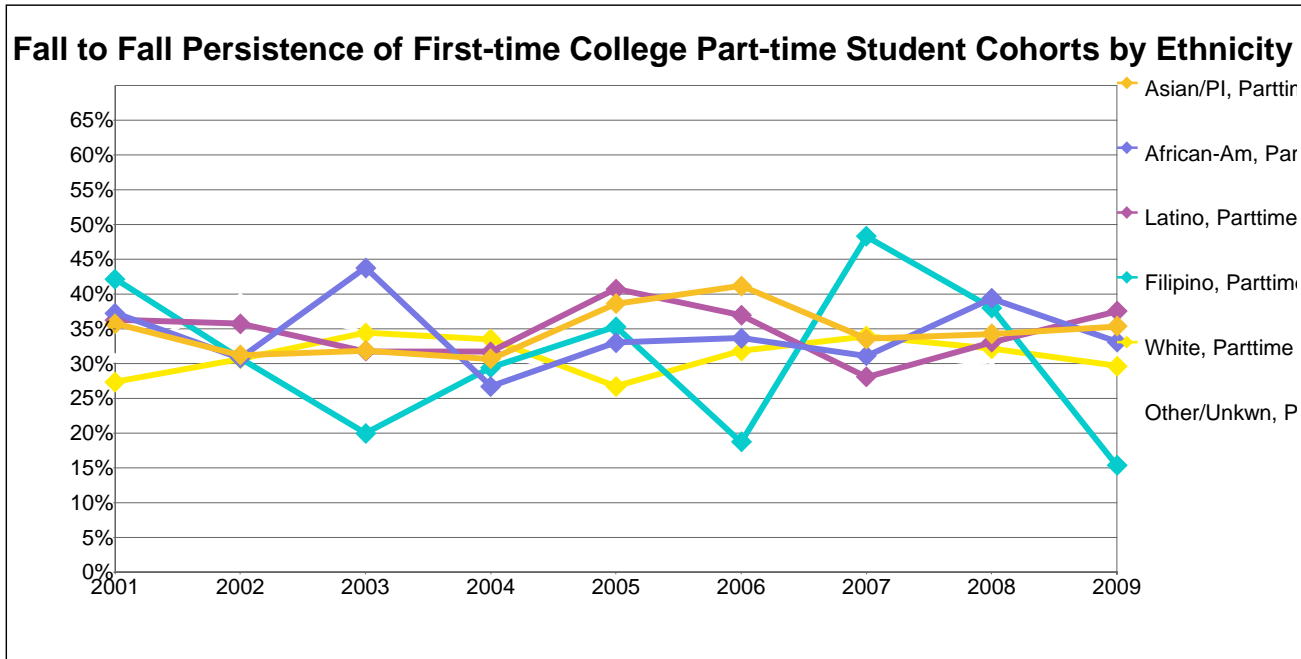
### Number of the Cohort Persisting to the Following Fall Opening Day by Gender within the District

Cohort	African-	Asian/PI	Filipino	Latino	Other/Unkwn	White	Total
2001	9	14	0	8	13	22	66
2002	20	24	3	9	9	25	90
2003	18	11	2	10	7	22	70
2004	19	12	2	19	14	16	82
2005	11	14	2	12	13	20	72
2006	16	21	0	12	18	29	96
2007	22	38	2	16	20	33	131
2008	52	76	13	54	51	67	313
2009	20	49	8	11	229	22	339

### Percentage of the Cohort Persisting to the Following Fall Opening Day by Gender within the District

Cohort	African-	Asian/PI	Filipino	Latino	Other/Unkwn	White	Total
2001	56%	54%	0%	50%	81%	50%	55%
2002	69%	63%	100%	60%	47%	63%	63%
2003	67%	61%	50%	63%	58%	58%	61%
2004	79%	60%	67%	70%	78%	46%	65%
2005	65%	58%	100%	57%	54%	47%	55%
2006	70%	60%	0%	86%	82%	54%	64%
2007	56%	56%	29%	47%	51%	45%	50%
2008	53%	58%	72%	57%	57%	48%	55%
2009	48%	60%	100%	50%	56%	63%	57%

## Berkeley City College



**Number of Fall First-time College Part-time Students Enrolled at Census by Ethnicity at Berkeley City College**

Cohort	African-	Asian/PI	Filipino	Latino	Other/Unkwn	White	Total
2001	153	126	19	113	120	245	776
2002	169	125	13	112	124	225	768
2003	112	135	15	85	119	247	713
2004	146	101	17	101	123	200	688
2005	191	101	17	113	104	217	743
2006	199	124	16	111	137	280	867
2007	222	167	29	178	150	351	1,097
2008	249	295	50	230	336	476	1,636
2009	142	150	13	80	1,145	216	1,746

**Number of the Cohort Persisting to the Following Fall Opening Day by Gender within the District**

Cohort	African-	Asian/PI	Filipino	Latino	Other/Unkwn	White	Total
2001	57	45	8	41	37	67	255
2002	52	39	4	40	49	69	253
2003	49	43	3	27	41	85	248
2004	39	31	5	32	39	67	213
2005	63	39	6	46	28	58	240
2006	67	51	3	41	38	89	289
2007	69	56	14	50	42	119	350
2008	98	101	19	76	102	153	549
2009	47	53	2	30	356	64	552

**Percentage of the Cohort Persisting to the Following Fall Opening Day by Gender within the District**

Cohort	African-	Asian/PI	Filipino	Latino	Other/Unkwn	White	Total
2001	37%	36%	42%	36%	31%	27%	33%
2002	31%	31%	31%	36%	40%	31%	33%
2003	44%	32%	20%	32%	34%	34%	35%
2004	27%	31%	29%	32%	32%	34%	31%
2005	33%	39%	35%	41%	27%	27%	32%
2006	34%	41%	19%	37%	28%	32%	33%
2007	31%	34%	48%	28%	28%	34%	32%
2008	39%	34%	38%	33%	30%	32%	34%
2009	33%	35%	15%	38%	31%	30%	32%