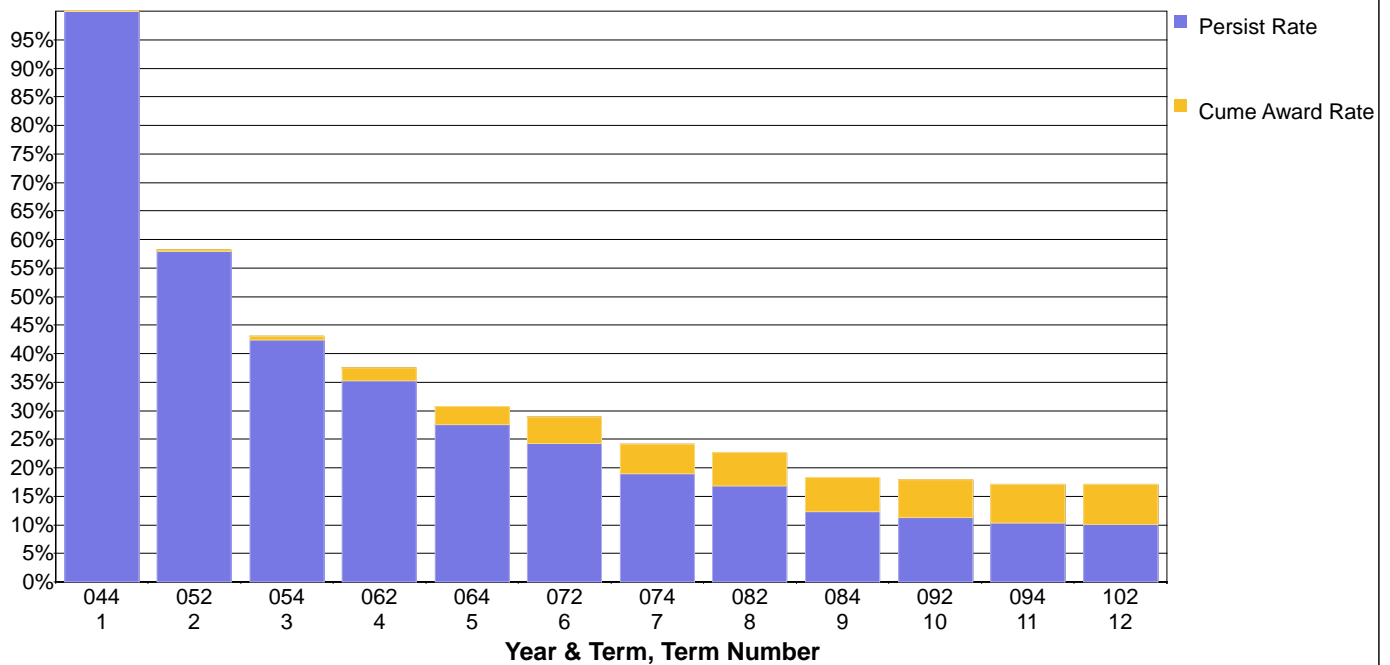


Laney College

**Persistence and Cumulative Award Rates for Fall 2004
First-Time College Cohort by Term Since Entrance**



**Frequency Counts, Persistence Rates, and Cumulative Award Rates
for Fall 2004 First-Time College Cohort by Term Since Entrance**

Yr & Term	Term Number	Cohort Cnt	Number Persisting	Number of Awards	Cume Awards	Persistence Rate	Cume Award Rate	Retained or Completed
044	1	2,458	2,458	0	0	100%	0.0%	100%
052	2		1,423	7	7	58%	0.3%	58%
054	3		1,041	12	19	42%	0.8%	43%
062	4		865	39	58	35%	2.4%	38%
064	5		678	21	79	28%	3.2%	31%
072	6		595	36	115	24%	4.7%	29%
074	7		467	12	127	19%	5.2%	24%
082	8		414	15	142	17%	5.8%	23%
084	9		303	6	148	12%	6.0%	18%
092	10		278	14	162	11%	6.6%	18%
094	11		254	4	166	10%	6.8%	17%
102	12		249	7	173	10%	7.0%	17%

Note: The cohort is defined as all those entering in the fall of the indicated year who were enrolled on the census day and who had an enrollment status of first-time to college, i.e. enrollment status = 1. The filter for matriculating students was not applied. Thus, this cohort may include matriculation exempt students. Spring awards include those of the following summer.