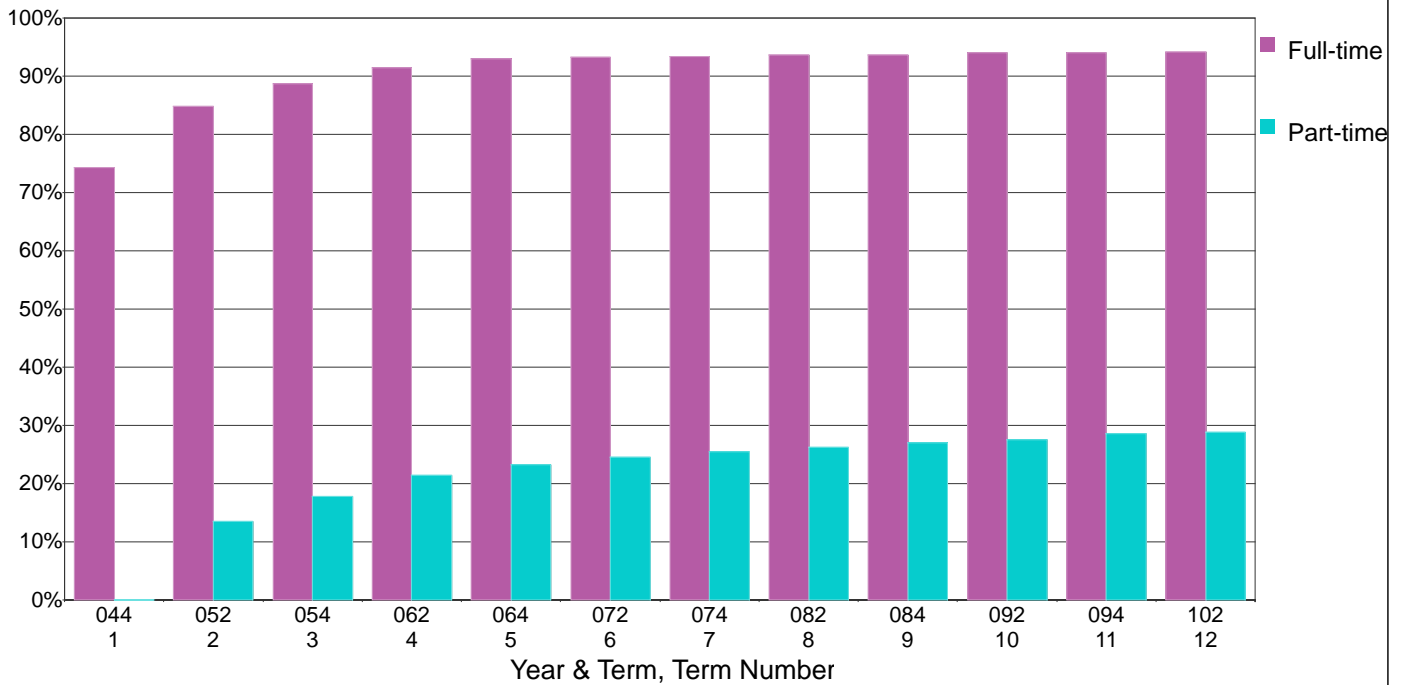


Laney College

Cumulative Percentage Earning 12 or more College Level Units for the Fall 2004 First-Time College Cohort by First Term Full-time/Part-time Status



Counts & Percentages Earning 12 or more College Level Units for the Fall 2004 First-Time College Cohort by First Term Full-time/Part-time Status

Term Number	Full-time First Term					Part-time First Term				
	Number FullPart	Number >= 12 CL Units	Percent >= 12 CL Units	Cumulative Number >= 12 CL Units	Cumulative Percent >= 12 CL Units	Number FullPart	Number >= 12 CL Units	Percent >= 12 CL Units	Cumulative Number >= 12 CL Units	Cumulative Percent >= 12 CL Units
1	512	380	74.2%	380	74.2%	1,946	0	0.0%	0	0.0%
2	512	54	10.5%	434	84.8%	1,946	261	13.4%	261	13.4%
3	512	20	3.9%	454	88.7%	1,946	84	4.3%	345	17.7%
4	512	14	2.7%	468	91.4%	1,946	72	3.7%	417	21.4%
5	512	8	1.6%	476	93.0%	1,946	35	1.8%	452	23.2%
6	512	1	0.2%	477	93.2%	1,946	25	1.3%	477	24.5%
7	512	1	0.2%	478	93.4%	1,946	18	0.9%	495	25.4%
8	512	1	0.2%	479	93.6%	1,946	14	0.7%	509	26.2%
9	512	0	0.0%	479	93.6%	1,946	15	0.8%	524	26.9%
10	512	2	0.4%	481	93.9%	1,946	10	0.5%	534	27.4%
11	512	0	0.0%	481	93.9%	1,946	21	1.1%	555	28.5%
12	512	1	0.2%	482	94.1%	1,946	5	0.3%	560	28.8%

Note: The cohort is defined as all those entering in the fall of the indicated year who were enrolled on the census day and who had an enrollment status of first-time to college, i.e. enrollment status = 1. The filter for matriculating students was not applied. Thus, this cohort may include matriculation exempt students. A College Level Unit is defined as units earned (i.e., with a grade of D or better) in a class that does not have a Basic Skills flag of B (basic skills) or P (pre-collegiate).