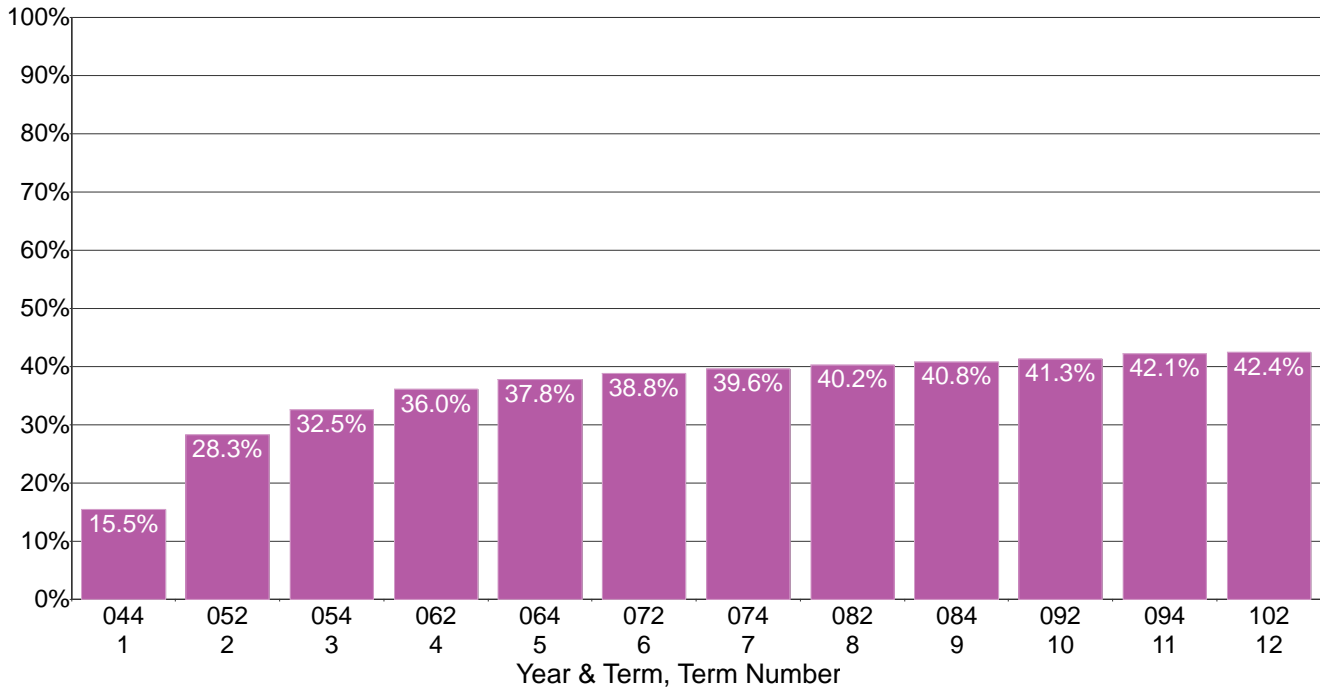


**Laney College**

**Cumulative Percentage Earning 12 or more College Level Units for the Fall 2004 First-Time College Cohort by Term Since Entrance**



**Counts & Percentages Earning 12 or more College Level Units for the Fall 2004 First-Time College Cohort by Term Since Entrance**

Term Number	Term	Number in Cohort	Number >= 12 CL Units	Percent >= 12 CL Units	Cumulative Number >= 12 CL Units	Cumulative Percent >= 12 CL Units Rate
1	Fall 2004	2,458	380	15.5%	380	15.5%
2	Spr 2005	2,458	315	12.8%	695	28.3%
3	Fall 2005	2,458	104	4.2%	799	32.5%
4	Spr 2006	2,458	86	3.5%	885	36.0%
5	Fall 2006	2,458	43	1.7%	928	37.8%
6	Spr 2007	2,458	26	1.1%	954	38.8%
7	Fall 2007	2,458	19	0.8%	973	39.6%
8	Spr 2008	2,458	15	0.6%	988	40.2%
9	Fall 2008	2,458	15	0.6%	1,003	40.8%
10	Spr 2009	2,458	12	0.5%	1,015	41.3%
11	Fall 2009	2,458	21	0.9%	1,036	42.1%
12	Spr 2010	2,458	6	0.2%	1,042	42.4%

Note: The cohort is defined as all those entering in the fall of the indicated year who were enrolled on the census day and who had an enrollment status of first-time to college, i.e. enrollment status = 1. The filter for matriculating students was not applied. Thus, this cohort may include matriculation exempt students. A College Level Unit is defined as units earned (i.e., with a grade of D or better) in a class that does not have a Basic Skills flag of B (basic skills) or P (pre-collegiate).