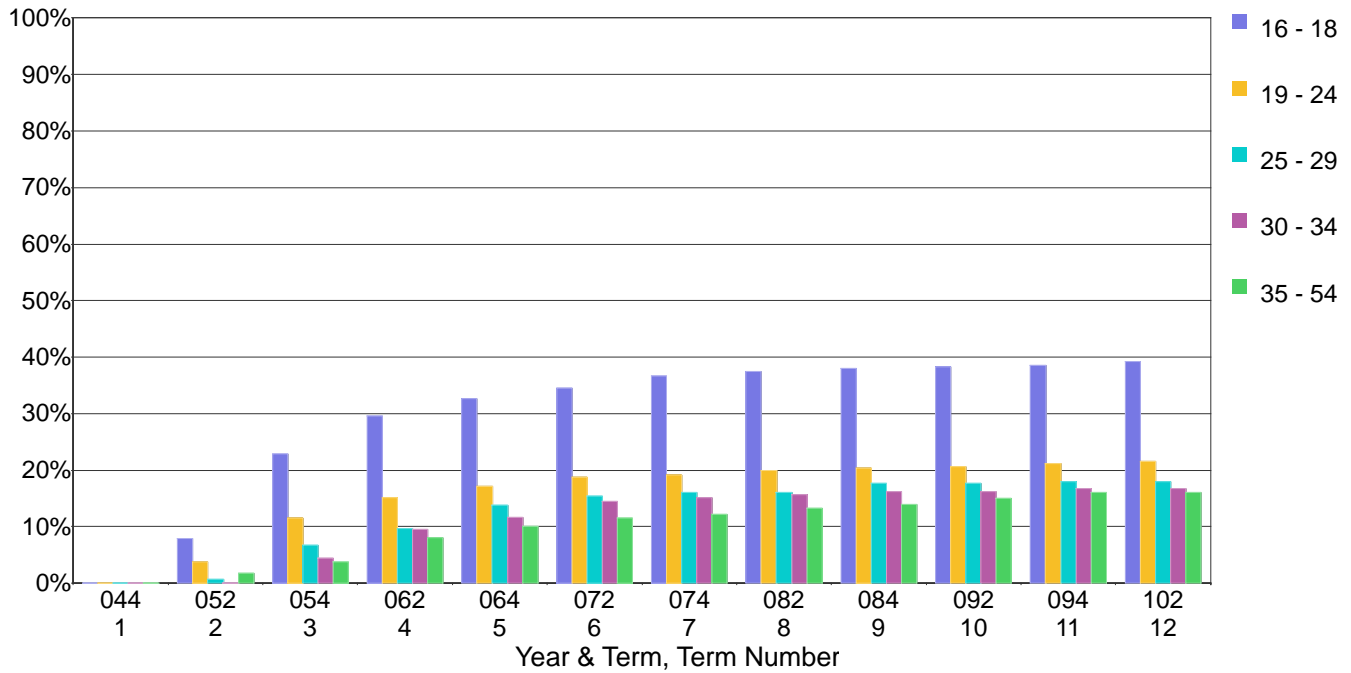


## Laney College

### Cumulative Percentage Earning 30 or more College Level Units for the Fall 2004 First-Time College Cohort by Age Group and Term



### Counts & Percentages Earning 30 or more College Level Units for the Fall 2004 First-Time College Cohort by Age Group and Term

Term Number	16 - 18			19 - 24			25 - 29			30 - 54		
	Number	Cume	FullPart	Number	Cume	FullPart	Number	Cume	FullPart	Number	Cume	FullPart
	16-18 Cohort	16-18 CL Units	First Term Cnt	19-24 Cohort	19-24 CL Units	First Term Cnt	25-29 Cohort	25-29 CL Units	First Term Cnt	30-54 Cohort	30-54 CL Units	First Term Cnt
1	661	0	0.0%	967	0	0.0%	311	0	0.0%	466	0	0.0%
2	661	52	7.9%	967	36	3.7%	311	2	0.6%	466	5	1.1%
3	661	151	22.8%	967	112	11.6%	311	21	6.8%	466	19	4.1%
4	661	196	29.7%	967	146	15.1%	311	30	9.6%	466	40	8.6%
5	661	216	32.7%	967	166	17.2%	311	43	13.8%	466	50	10.7%
6	661	228	34.5%	967	182	18.8%	311	48	15.4%	466	59	12.7%
7	661	242	36.6%	967	185	19.1%	311	50	16.1%	466	62	13.3%
8	661	248	37.5%	967	193	20.0%	311	50	16.1%	466	66	14.2%
9	661	251	38.0%	967	197	20.4%	311	55	17.7%	466	69	14.8%
10	661	253	38.3%	967	200	20.7%	311	55	17.7%	466	72	15.5%
11	661	255	38.6%	967	204	21.1%	311	56	18.0%	466	76	16.3%
12	661	259	39.2%	967	208	21.5%	311	56	18.0%	466	76	16.3%

Note: The cohort is defined as all those entering in the fall of the indicated year who were enrolled on the census day and who had an enrollment status of first-time to college, i.e. enrollment status = 1. The filter for matriculating students was not applied. Thus, this cohort may include matriculation exempt students. A College Level Unit is defined as units earned (i.e., with a grade of D or better) in a class that does not have a Basic Skills flag of B (basic skills) or P (pre-collegiate).