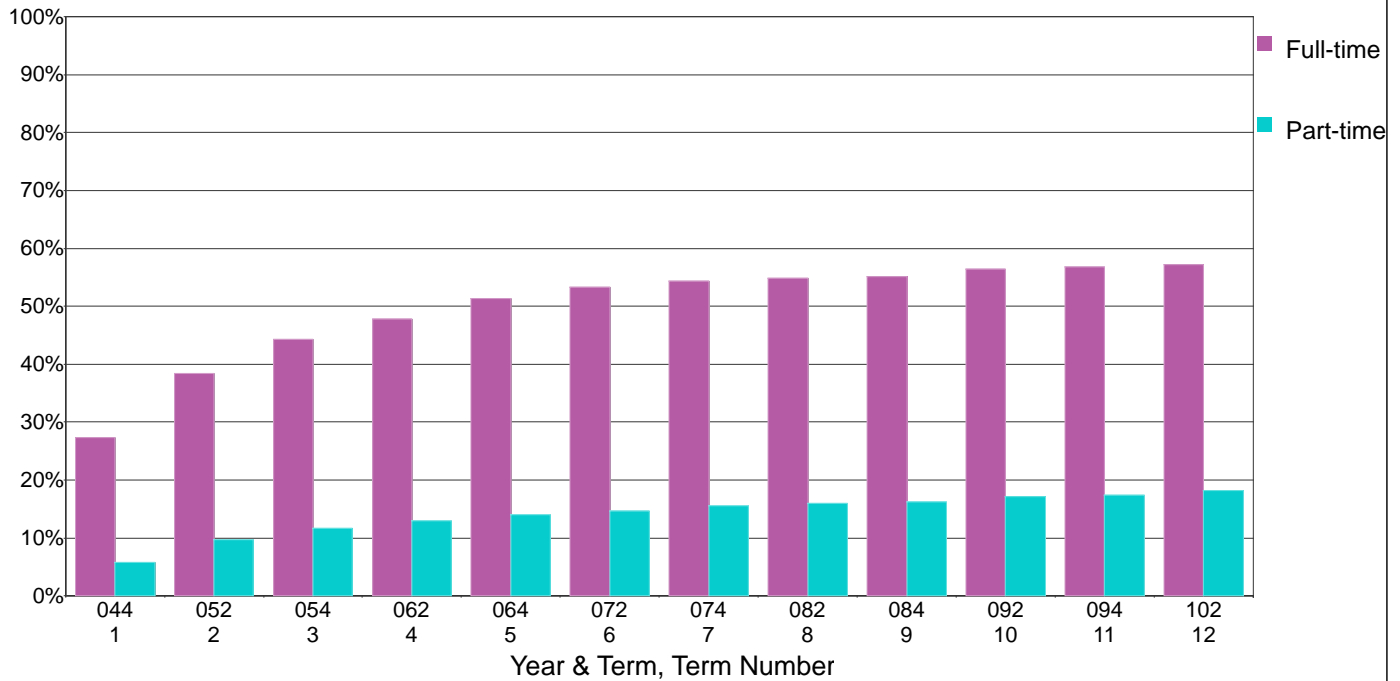


## Laney College

**Cumulative Percentage Successfully Completing First College Level English Course for the Fall 2004 First-Time College Cohort by First Term Full-time/Part-time Status**



**Counts & Percentages Successfully Completing First College Level English Course for the Fall 2004 First-Time College Cohort by First Term Full-time/Part-time Status**

Term Number	Full-time First Term					Part-time First Term				
	Number FullPart	Number Passing First CL Engl	Percent Passing First CL Engl	Cumulative Number Passing First CL Engl	Cumulative Percent Passing First CL Engl	Number FullPart	Number Passing First CL Engl	Percent Passing First CL Engl	Cumulative Number Passing First CL Engl	Cumulative Percent Passing First CL Engl
1	512	140	27.3%	140	27.3%	1,946	114	5.9%	114	5.9%
2	512	57	11.1%	197	38.5%	1,946	75	3.9%	189	9.7%
3	512	30	5.9%	227	44.3%	1,946	38	2.0%	227	11.7%
4	512	18	3.5%	245	47.9%	1,946	26	1.3%	253	13.0%
5	512	18	3.5%	263	51.4%	1,946	21	1.1%	274	14.1%
6	512	10	2.0%	273	53.3%	1,946	12	0.6%	286	14.7%
7	512	5	1.0%	278	54.3%	1,946	17	0.9%	303	15.6%
8	512	3	0.6%	281	54.9%	1,946	8	0.4%	311	16.0%
9	512	1	0.2%	282	55.1%	1,946	5	0.3%	316	16.2%
10	512	7	1.4%	289	56.4%	1,946	18	0.9%	334	17.2%
11	512	2	0.4%	291	56.8%	1,946	5	0.3%	339	17.4%
12	512	2	0.4%	293	57.2%	1,946	16	0.8%	355	18.2%

Note: The cohort is defined as all those entering in the fall of the indicated year who were enrolled on the census day and who had an enrollment status of first-time to college, i.e. enrollment status = 1. The filter for matriculating students was not applied. Thus, this cohort may include matriculation exempt students. An earned College Level Unit is defined as units (credit hours) earned (i.e., with a grade of D or better) in a class that does not have a Basic Skills flag of B (basic skills) or P (pre-collegiate). Successfully Completing is defined as earn a grade of A, B, C, or CR.