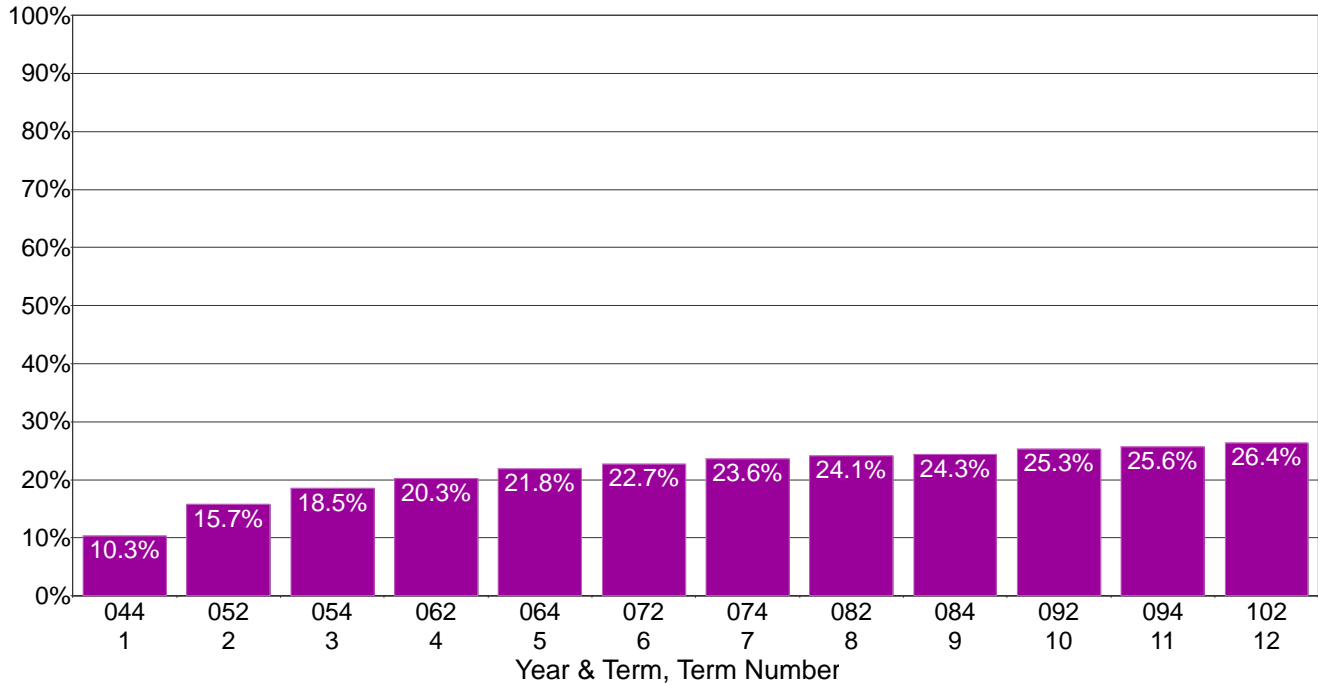


Laney College

Cumulative Percentage for Successfully Completing First College Level English Course for the Fall 2004 First-Time College Cohort by Term Since Entrance



Counts & Percentages for Successfully Completing First College Level English Course for the Fall 2004 First-Time College Cohort by Term Since Entrance

Term Number	Term	Number in Cohort	Number Passing First CL Engl Crs	Percent First Passing CL Math	Cumulative Number Passing First CL Engl Crs	Cumulative Percent Passing First CL Engl Cr
1	Fall 2004	2,458	254	10.3%	254	10.3%
2	Spr 2005	2,458	132	5.4%	386	15.7%
3	Fall 2005	2,458	68	2.8%	454	18.5%
4	Spr 2006	2,458	44	1.8%	498	20.3%
5	Fall 2006	2,458	39	1.6%	537	21.8%
6	Spr 2007	2,458	22	0.9%	559	22.7%
7	Fall 2007	2,458	22	0.9%	581	23.6%
8	Spr 2008	2,458	11	0.4%	592	24.1%
9	Fall 2008	2,458	6	0.2%	598	24.3%
10	Spr 2009	2,458	25	1.0%	623	25.3%
11	Fall 2009	2,458	7	0.3%	630	25.6%
12	Spr 2010	2,458	18	0.7%	648	26.4%

Note: The cohort is defined as all those entering in the fall of the indicated year who were enrolled on the census day and who had an enrollment status of first-time to college, i.e. enrollment status = 1. The filter for matriculating students was not applied. Thus, this cohort may include matriculation exempt students. An earned College Level Unit is defined as units (credit hours) earned (i.e., with a grade of D or better) in a class that does not have a Basic Skills flag of B (basic skills) or P (pre-collegiate). Successfully Completing is defined as earn a grade of A, B, C, or CR.