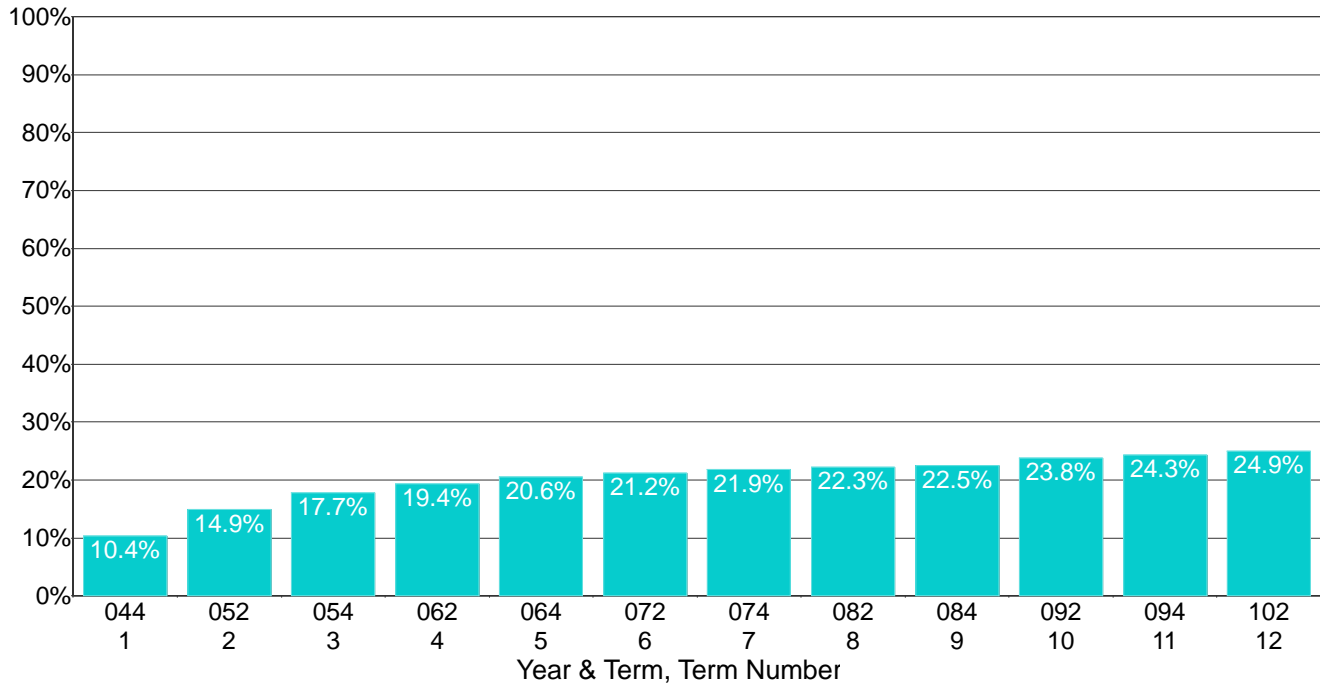


Laney College

Cumulative Percentage for Successfully Completing First College Level Math Course for the Fall 2004 First-Time College Cohort by Term Since Entrance



Counts & Percentages for Successfully Completing First College Level Math Course for the Fall 2004 First-Time College Cohort by Term Since Entrance

Term Number	Term	Number in Cohort	Number First Passing CL Math	Percent First Passing CL Math	Cume Number First Passing CL Math	Cume Percent First Passing CL Math
1	Fall 2004	2,458	256	10.4%	256	10.4%
2	Spr 2005	2,458	111	4.5%	367	14.9%
3	Fall 2005	2,458	69	2.8%	436	17.7%
4	Spr 2006	2,458	40	1.6%	476	19.4%
5	Fall 2006	2,458	30	1.2%	506	20.6%
6	Spr 2007	2,458	16	0.7%	522	21.2%
7	Fall 2007	2,458	16	0.7%	538	21.9%
8	Spr 2008	2,458	10	0.4%	548	22.3%
9	Fall 2008	2,458	5	0.2%	553	22.5%
10	Spr 2009	2,458	31	1.3%	584	23.8%
11	Fall 2009	2,458	14	0.6%	598	24.3%
12	Spr 2010	2,458	15	0.6%	613	24.9%

Note: The cohort is defined as all those entering in the fall of the indicated year who were enrolled on the census day and who had an enrollment status of first-time to college, i.e. enrollment status = 1. The filter for matriculating students was not applied. Thus, this cohort may include matriculation exempt students. An earned College Level Unit is defined as units (credit hours) earned (i.e., with a grade of D or better) in a class that does not have a Basic Skills flag of B (basic skills) or P (pre-collegiate). Successfully Completing is defined as earn a grade of A, B, C, or CR.