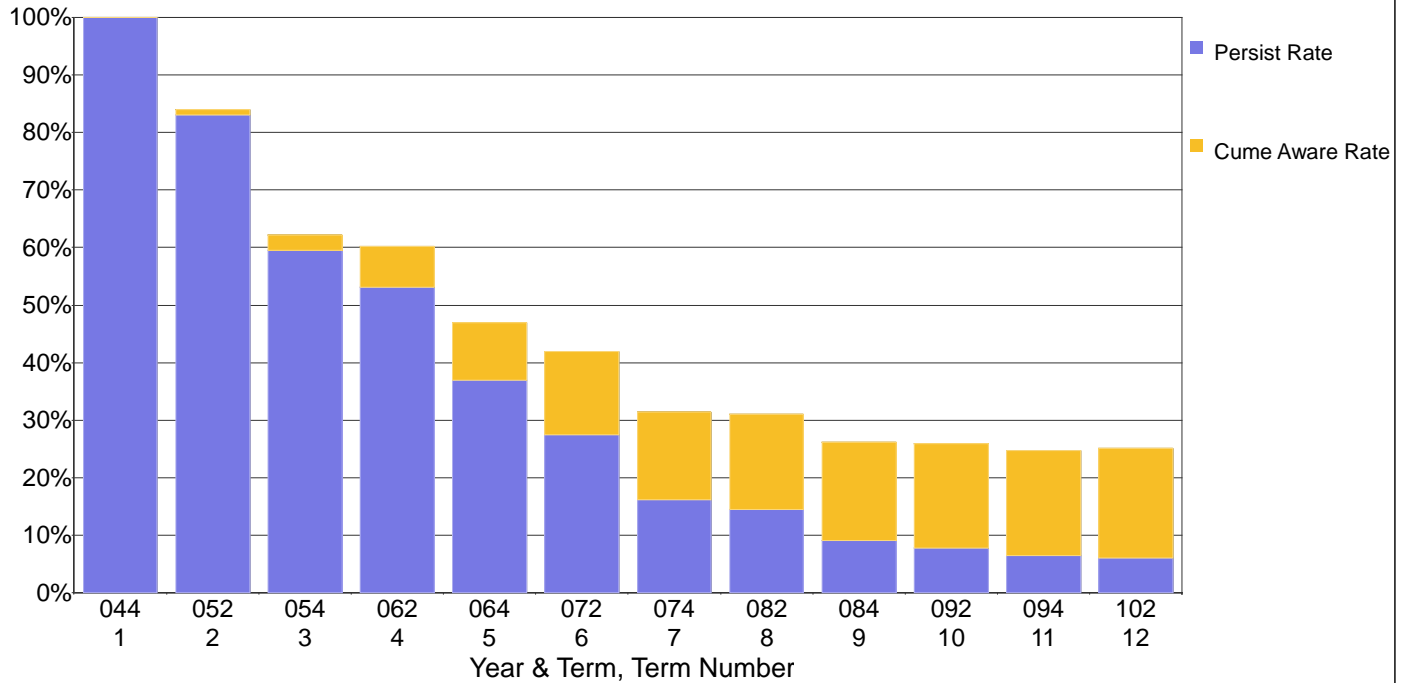


Laney College

**Persistence and Cumulative Award Rates for First Term Full-time Fall 2004
First-Time College Cohort by Term Since Entrance**



**Frequency Counts, Persistence Rates, and Cumulative Award Rates for First Term
Full-time Fall 2004 First-Time College Cohort by Term Since Entrance**

Full Part Status	Yrterm	Term Number	Number Full-time in Cohort	Number Persisting	Number of Awards	Cume Awards	Persister Rate	Cumulative Award Rate	Retained or Completed
Full-time	044	1	512	512	0	0	100%	0.0%	100.0%
	052	2	512	425	5	5	83%	1.0%	84.0%
	054	3	512	305	8	13	60%	2.5%	62.1%
	062	4	512	272	23	36	53%	7.0%	60.2%
	064	5	512	189	15	51	37%	10.0%	46.9%
	072	6	512	141	23	74	28%	14.5%	42.0%
	074	7	512	83	4	78	16%	15.2%	31.4%
	082	8	512	74	7	85	14%	16.6%	31.1%
	084	9	512	47	2	87	9%	17.0%	26.2%
	092	10	512	40	6	93	8%	18.2%	26.0%
	094	11	512	33	1	94	6%	18.4%	24.8%
	102	12	512	31	4	98	6%	19.1%	25.2%

Note: The cohort is defined as all those entering in the fall of the indicated year who were enrolled on the census day and who had an enrollment status of first-time to college, i.e. enrollment status = 1. The filter for matriculating students was not applied. Thus, this cohort may include matriculation exempt students. Spring awards include those of the following summer. Full Part Status refers to the full-time or part-time status of students during their first term. A full-time student is defined as having earned 12 or more units.