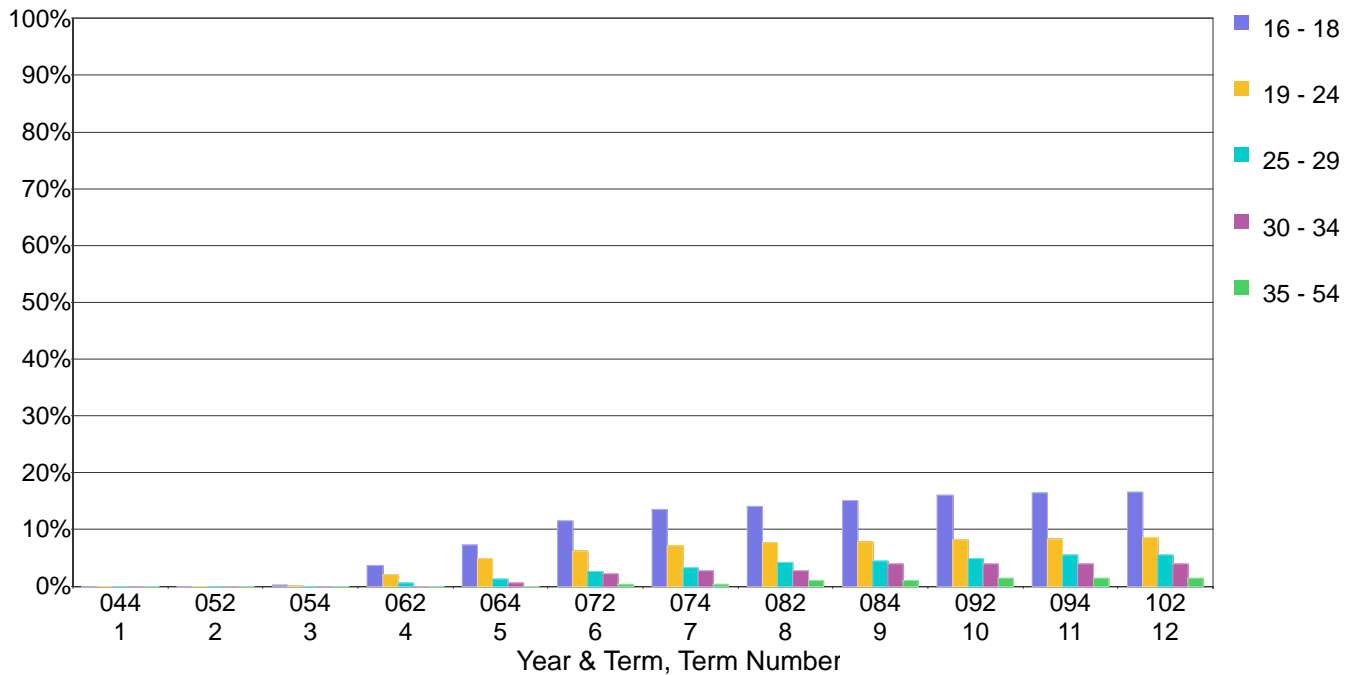


Laney College

Cumulative Percentage Achieving Transfer Ready Status for the Fall 2004 First-Time College Cohort by Age Group and Term



Counts & Percentages Achieving Transfer Ready Status for the Fall 2004 First-Time College Cohort by Age Group and Term

Term Number	16 - 18			19 - 24			25 - 29			30 - 54		
	Number 16-18 Cohort	Cume Number Transfer Ready	Cume Percent Transfer Ready	Number 16-18 Cohort	Cume Number Transfer Ready	Cume Percent Transfer Ready	Number 16-18 Cohort	Cume Number Transfer Ready	Cume Percent Transfer Ready	Number 16-18 Cohort	Cume Number Transfer Ready	Cume Percent Transfer Ready
1	661	0	0.0%	967	0	0.0%	311	0	0.0%	466	0	0.0%
2	661	0	0.0%	967	0	0.0%	311	0	0.0%	466	0	0.0%
3	661	1	0.2%	967	1	0.1%	311	0	0.0%	466	0	0.0%
4	661	24	3.6%	967	20	2.1%	311	2	0.6%	466	0	0.0%
5	661	48	7.3%	967	47	4.9%	311	4	1.3%	466	1	0.2%
6	661	76	11.5%	967	60	6.2%	311	8	2.6%	466	5	1.1%
7	661	89	13.5%	967	69	7.1%	311	10	3.2%	466	6	1.3%
8	661	93	14.1%	967	74	7.7%	311	13	4.2%	466	8	1.7%
9	661	100	15.1%	967	76	7.9%	311	14	4.5%	466	10	2.1%
10	661	106	16.0%	967	79	8.2%	311	15	4.8%	466	11	2.4%
11	661	109	16.5%	967	81	8.4%	311	17	5.5%	466	11	2.4%
12	661	110	16.6%	967	83	8.6%	311	17	5.5%	466	11	2.4%

Note: The cohort is defined as all those entering in the fall of the indicated year who were enrolled on the census day and who had an enrollment status of first-time to college, i.e. enrollment status = 1. The filter for matriculating students was not applied. Thus, this cohort may include matriculation exempt students. An earned College Level Unit is defined as units (credit hours) earned (i.e., with a grade of D or better) in a class that does not have a Basic Skills flag of B (basic skills) or P (pre-collegiate). A Transfer Ready student is defined student who has earned 60 or more college level units and has successfully completed both a college level English and math class. Successful Completion is defined as earning a grade of A, B, C, or CR in a class.