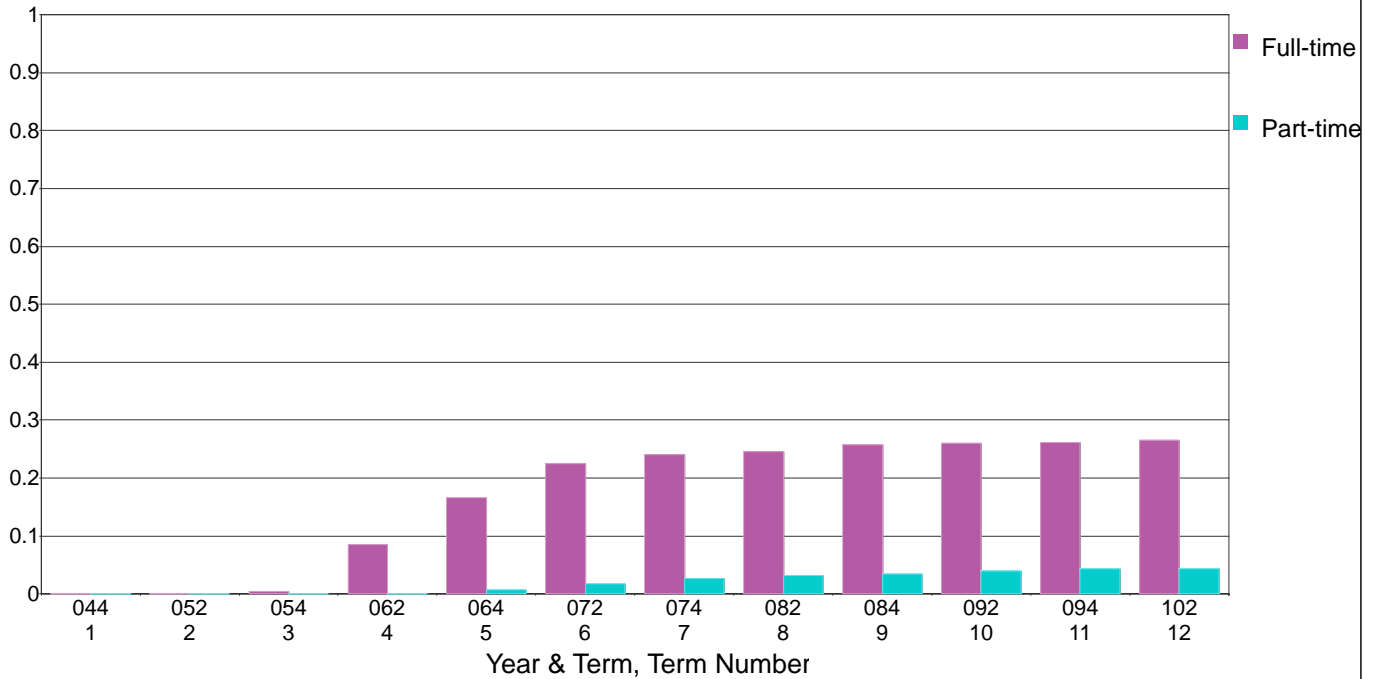


Laney College

Cumulative Percentage Achieving Transfer Ready Status for the Fall 2004 First-Time College Cohort by First Term Full-time/Part-time Status



Counts & Percentages Achieving Transfer Ready Status for the Fall 2004 First-Time College Cohort by First Term Full-time/Part-time Status

Term Number	Full-time First Term					Part-time First Term						
	Number		Percent		Cumulative Number Transfer Ready	Cumulative Percent Passing First CL Engl	Number		Percent		Cumulative Number Transfer Ready	Cumulative Percent Passing First CL Engl
	FullPart	Transfer Ready	Transfer Ready	Transfer Ready			FullPart	Transfer Ready	Transfer Ready	Transfer Ready		
1	512	0	0.0%	0	0.0%	1,946	0	0.0%	0	0.0%		
2	512	0	0.0%	0	0.0%	1,946	0	0.0%	0	0.0%		
3	512	2	0.4%	2	0.4%	1,946	0	0.0%	0	0.0%		
4	512	42	8.2%	44	8.6%	1,946	2	0.1%	2	0.1%		
5	512	41	8.0%	85	16.6%	1,946	13	0.7%	15	0.8%		
6	512	30	5.9%	115	22.5%	1,946	19	1.0%	34	1.7%		
7	512	8	1.6%	123	24.0%	1,946	17	0.9%	51	2.6%		
8	512	3	0.6%	126	24.6%	1,946	11	0.6%	62	3.2%		
9	512	6	1.2%	132	25.8%	1,946	6	0.3%	68	3.5%		
10	512	1	0.2%	133	26.0%	1,946	10	0.5%	78	4.0%		
11	512	1	0.2%	134	26.2%	1,946	6	0.3%	84	4.3%		
12	512	2	0.4%	136	26.6%	1,946	1	0.1%	85	4.4%		

Note: The cohort is defined as all those entering in the fall of the indicated year who were enrolled on the census day and who had an enrollment status of first-time to college, i.e. enrollment status = 1. The filter for matriculating students was not applied. Thus, this cohort may include matriculation exempt students. An earned College Level Unit is defined as units (credit hours) earned (i.e., with a grade of D or better) in a class that does not have a Basic Skills flag of B (basic skills) or P (pre-collegiate). A Transfer Ready student is defined student who has earned 60 or more college level units and has successfully completed both a college level English and math class. Successful Completion is defined as earning a grade of A, B, C, or CR in a class.