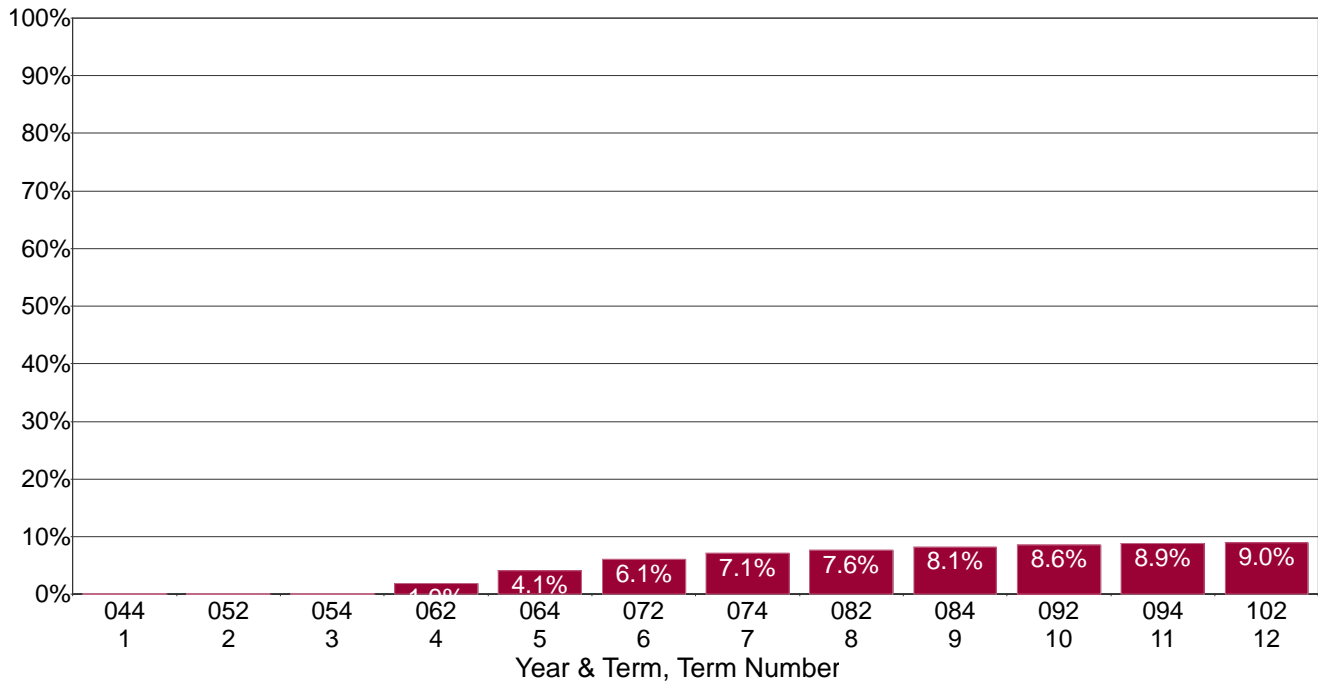


Laney College

Cumulative Percentage Achieving Transfer Ready Status for the Fall 2004 First-Time College Cohort by Term Since Entrance



Counts & Percentages Achieving Transfer Ready Status for the Fall 2004 First-Time College Cohort by Term Since Entrance

Term Number	Term	Number in Cohort	Transfer Ready	Percent Transfer Ready	Cumulative Number of Transfer	Cumulative Percent of Transfer
1	Fall 2004	2,458	0	0.0%	0	0.0%
2	Spr 2005	2,458	0	0.0%	0	0.0%
3	Fall 2005	2,458	2	0.1%	2	0.1%
4	Spr 2006	2,458	44	1.8%	46	1.9%
5	Fall 2006	2,458	54	2.2%	100	4.1%
6	Spr 2007	2,458	49	2.0%	149	6.1%
7	Fall 2007	2,458	25	1.0%	174	7.1%
8	Spr 2008	2,458	14	0.6%	188	7.6%
9	Fall 2008	2,458	12	0.5%	200	8.1%
10	Spr 2009	2,458	11	0.4%	211	8.6%
11	Fall 2009	2,458	7	0.3%	218	8.9%
12	Spr 2010	2,458	3	0.1%	221	9.0%

Note: The cohort is defined as all those entering in the fall of the indicated year who were enrolled on the census day and who had an enrollment status of first-time to college, i.e. enrollment status = 1. The filter for matriculating students was not applied. Thus, this cohort may include matriculation exempt students. An earned College Level Unit is defined as units (credit hours) earned (i.e., with a grade of D or better) in a class that does not have a Basic Skills flag of B (basic skills) or P (pre-collegiate). A Transfer Ready student is defined student who has earned 60 or more college level units and has successfully completed both a college level English and math class. Successful Completion is defined as earning a grade of A, B, C, or CR in a class.