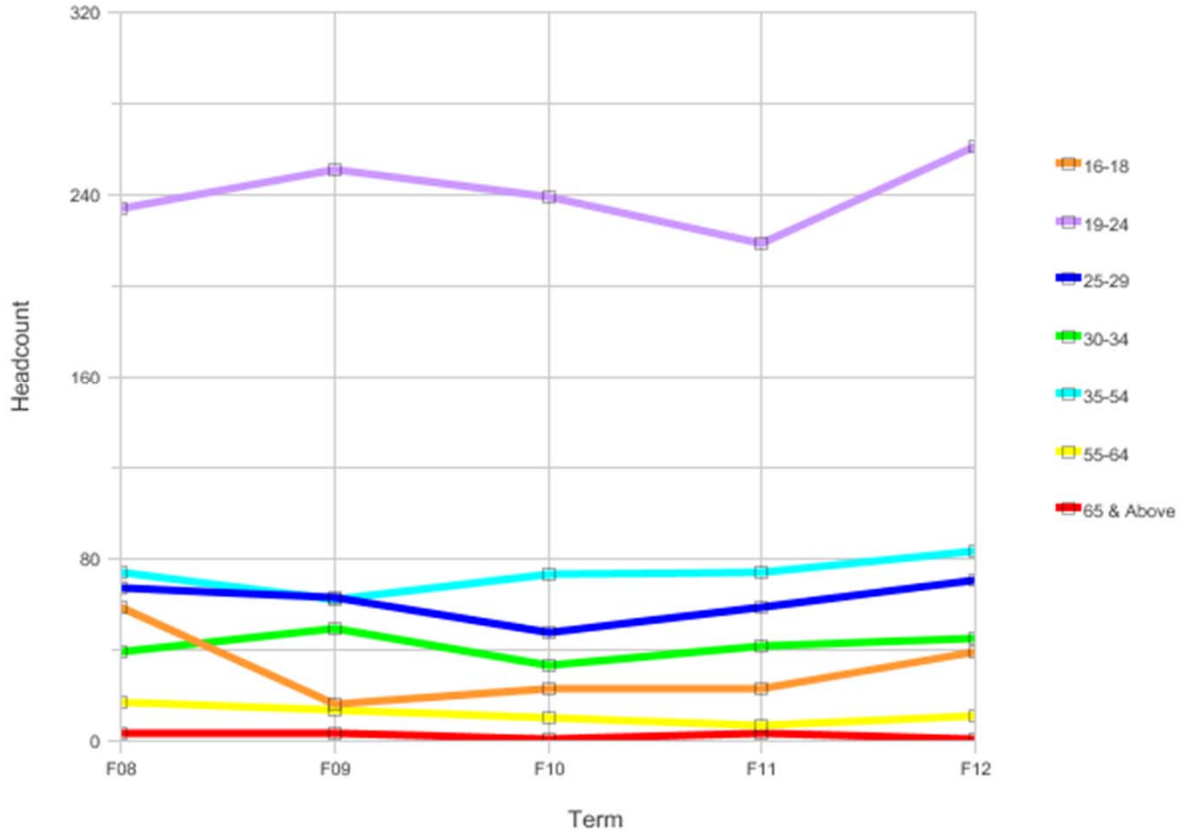


Fall Census EOPS Headcount by Age
College Alameda

Fall Census EOPS Headcount by Age

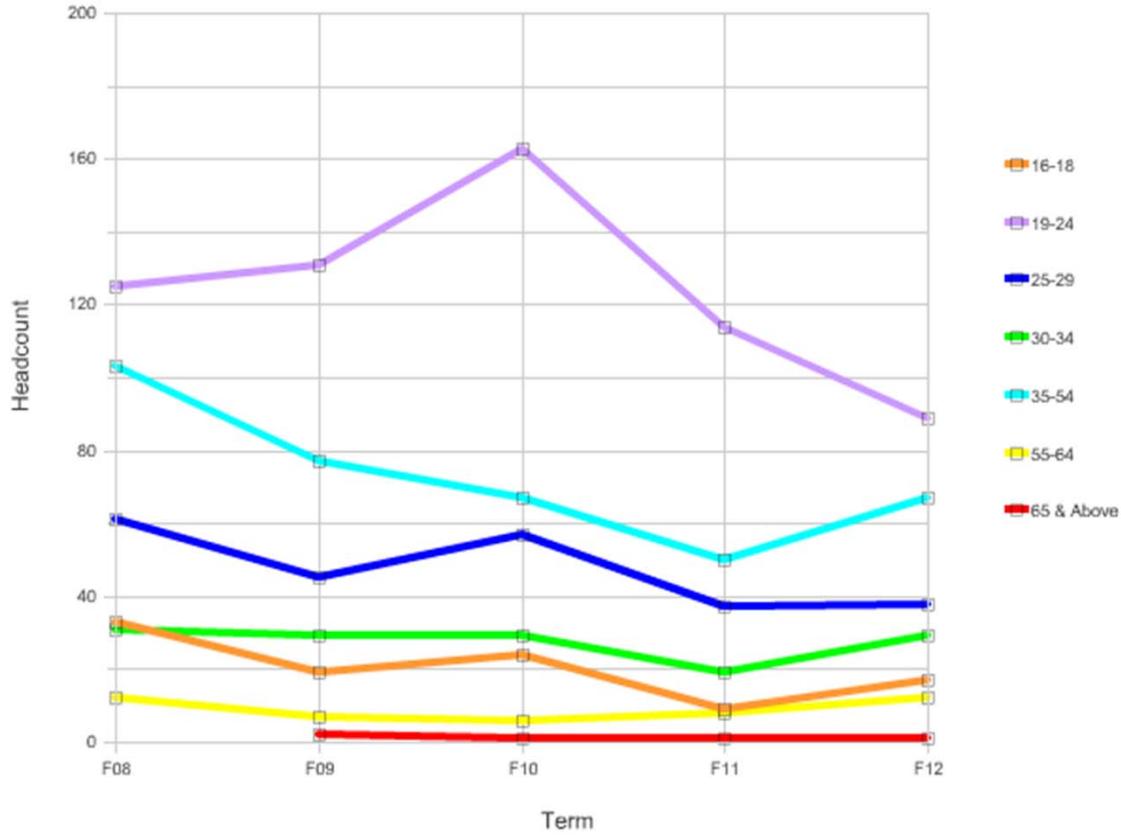


Age	Headcount					%				
	F08	F09	F10	F11	F12	F08	F09	F10	F11	F12
16-18	59	16	23	23	39	12%	4%	5%	5%	8%
19-24	234	251	239	219	261	48%	55%	56%	51%	51%
25-29	67	63	48	59	71	14%	14%	11%	14%	14%
30-34	39	49	33	42	45	8%	11%	8%	10%	9%
35-54	74	62	73	74	83	15%	14%	17%	17%	16%
55-64	17	14	10	7	11	3%	3%	2%	2%	2%
65 & Above	3	3	1	3	1	1%	1%	0%	1%	0%
Grand Total	493	458	427	427	511	100%	100%	100%	100%	100%

Fall Census EOPS Headcount by Age

College Berkeley

Fall Census EOPS Headcount by Age

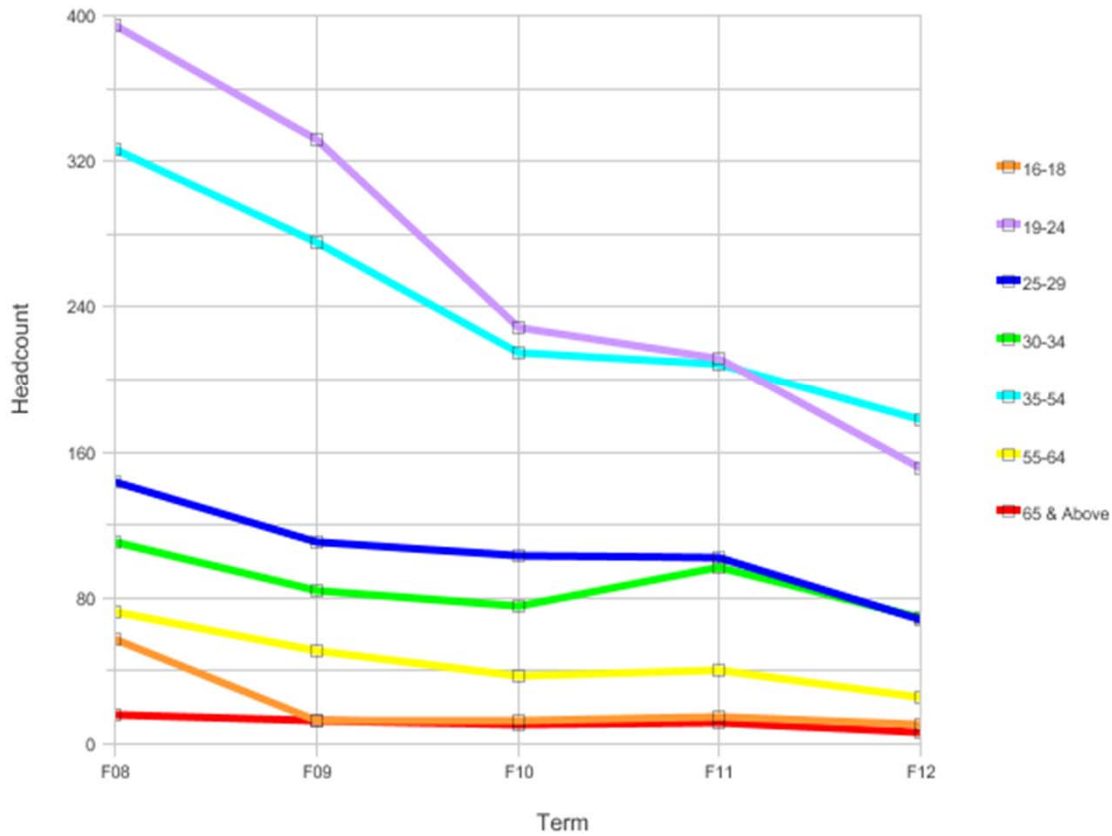


Age	Headcount					%				
	F08	F09	F10	F11	F12	F08	F09	F10	F11	F12
16-18	33	19	24	9	17	9%	6%	7%	4%	7%
19-24	125	131	163	114	89	34%	42%	47%	48%	35%
25-29	61	45	57	37	38	17%	15%	16%	16%	15%
30-34	31	29	29	19	29	9%	9%	8%	8%	12%
35-54	103	77	67	50	67	28%	25%	19%	21%	27%
55-64	12	7	6	8	12	3%	2%	2%	3%	5%
65 & Above		2	1	1	1		1%	0%	0%	0%
Grand Total	365	310	347	238	253	100%	100%	100%	100%	100%

Fall Census EOPS Headcount by Age

College Laney

Fall Census EOPS Headcount by Age

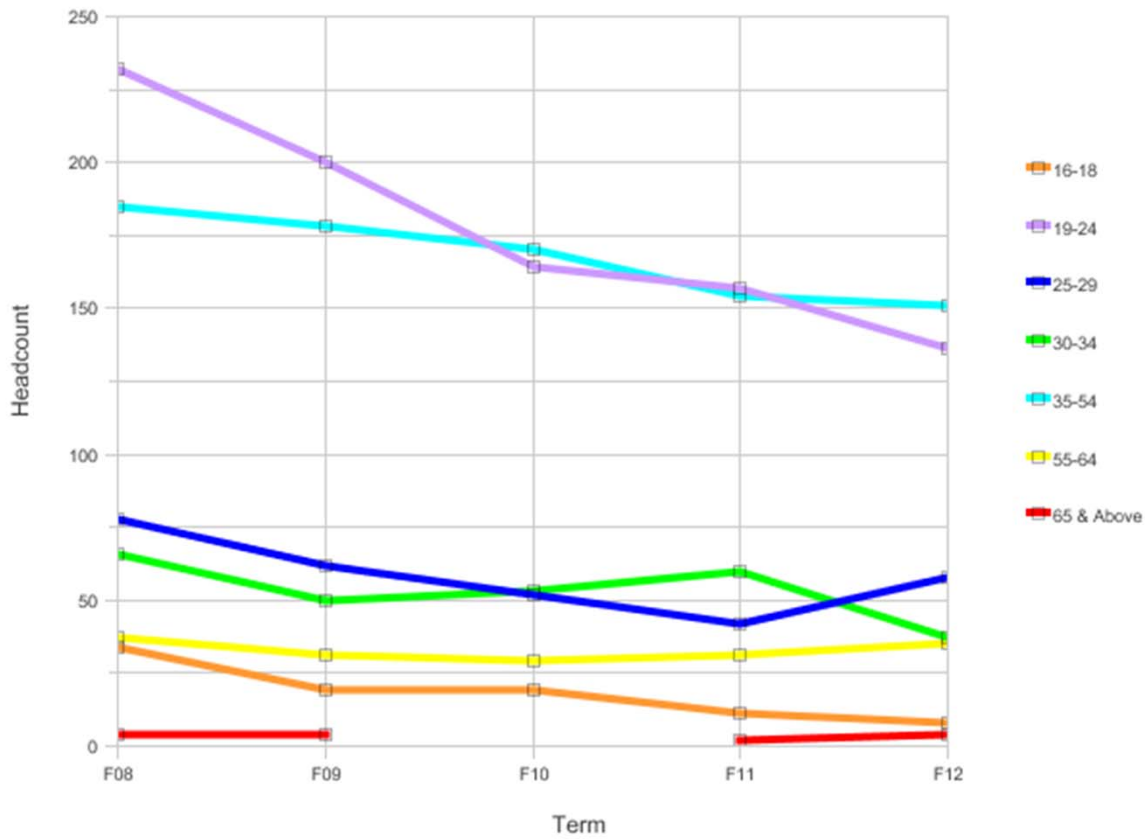


Age	Headcount					%				
	F08	F09	F10	F11	F12	F08	F09	F10	F11	F12
16-18	57	13	13	15	11	5%	2%	2%	2%	2%
19-24	395	332	229	212	151	35%	38%	34%	31%	30%
25-29	144	111	103	102	68	13%	13%	15%	15%	13%
30-34	111	84	76	97	69	10%	10%	11%	14%	14%
35-54	327	276	215	209	178	29%	31%	31%	30%	35%
55-64	72	51	37	40	25	6%	6%	5%	6%	5%
65 & Above	16	13	11	12	6	1%	2%	2%	2%	1%
Grand Total	1122	880	684	687	508	100%	100%	100%	100%	100%

Fall Census EOPS Headcount by Age

College Merritt

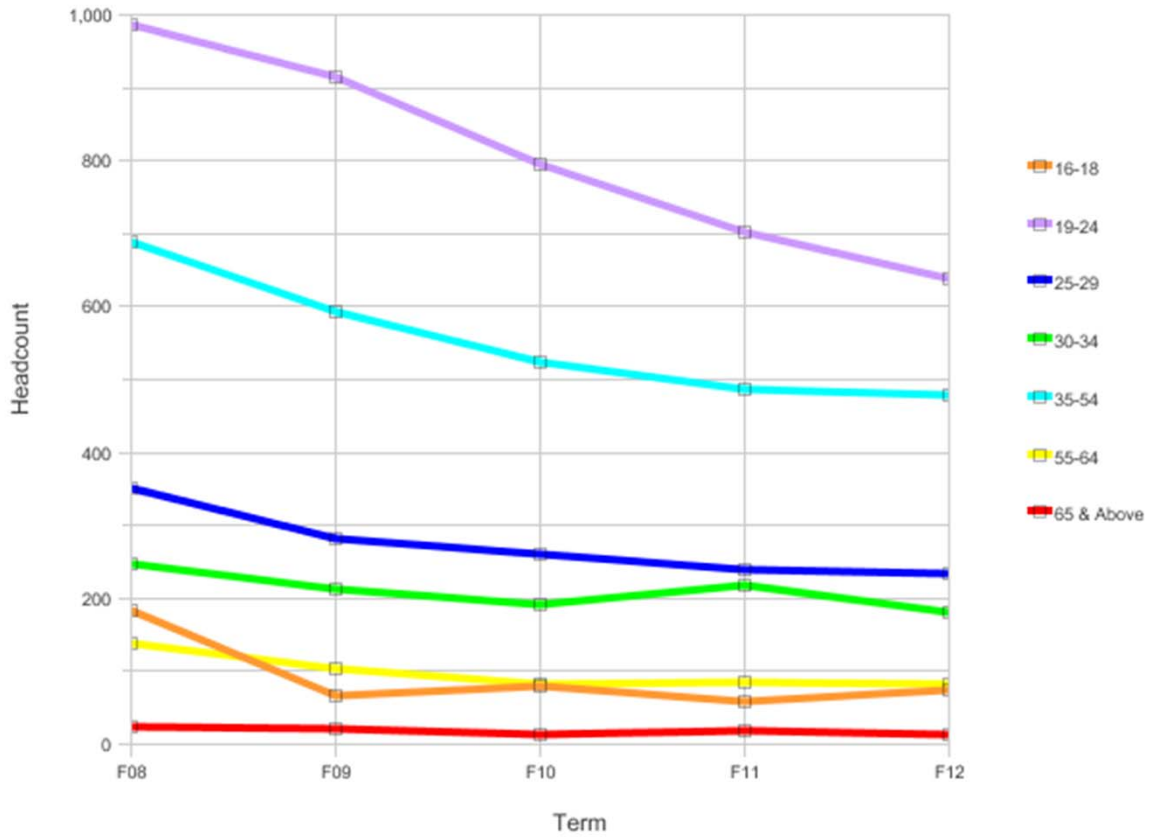
Fall Census EOPS Headcount by Age



Age	Headcount					%				
	F08	F09	F10	F11	F12	F08	F09	F10	F11	F12
16-18	34	19	19	11	8	5%	4%	4%	2%	2%
19-24	232	200	164	157	136	37%	37%	34%	34%	32%
25-29	78	62	52	42	58	12%	11%	11%	9%	14%
30-34	66	50	53	60	37	10%	9%	11%	13%	9%
35-54	185	178	170	154	151	29%	33%	35%	34%	35%
55-64	37	31	29	31	35	6%	6%	6%	7%	8%
65 & Above	4	4	2	2	4	1%	1%	0%	0%	1%
Grand Total	636	544	487	457	429	100%	100%	100%	100%	100%

Fall Census EOPS Headcount by Age - PCCD

Fall Census EOPS Headcount by Age



Age	Headcount					%				
	F08	F09	F10	F11	F12	F08	F09	F10	F11	F12
16-18	183	67	79	58	75	7%	3%	4%	3%	4%
19-24	986	914	795	702	637	38%	42%	41%	39%	37%
25-29	350	281	260	240	235	13%	13%	13%	13%	14%
30-34	247	212	191	218	180	9%	10%	10%	12%	11%
35-54	689	593	525	487	479	26%	27%	27%	27%	28%
55-64	138	103	82	86	83	5%	5%	4%	5%	5%
65 & Above	23	22	13	18	12	1%	1%	1%	1%	1%
Grand Total	2616	2192	1945	1809	1701	100%	100%	100%	100%	100%