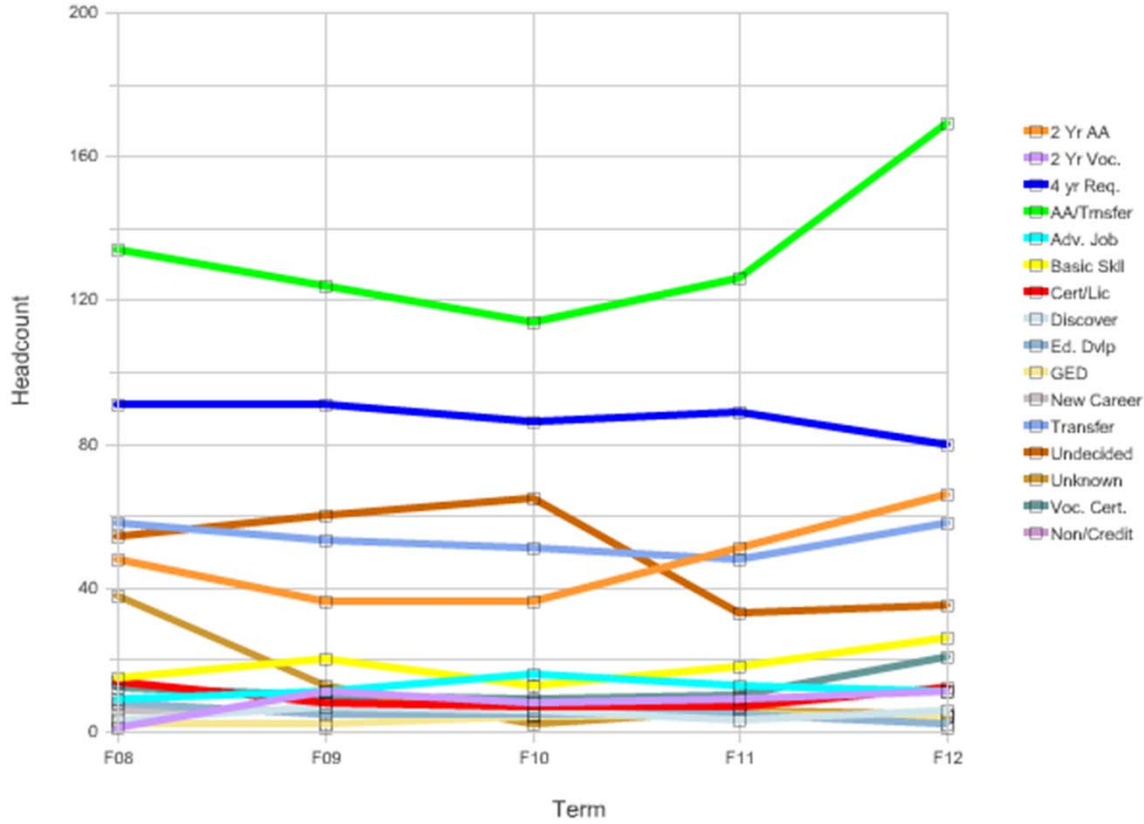


Fall Census EOPS Headcount by Matric Goal College Alameda

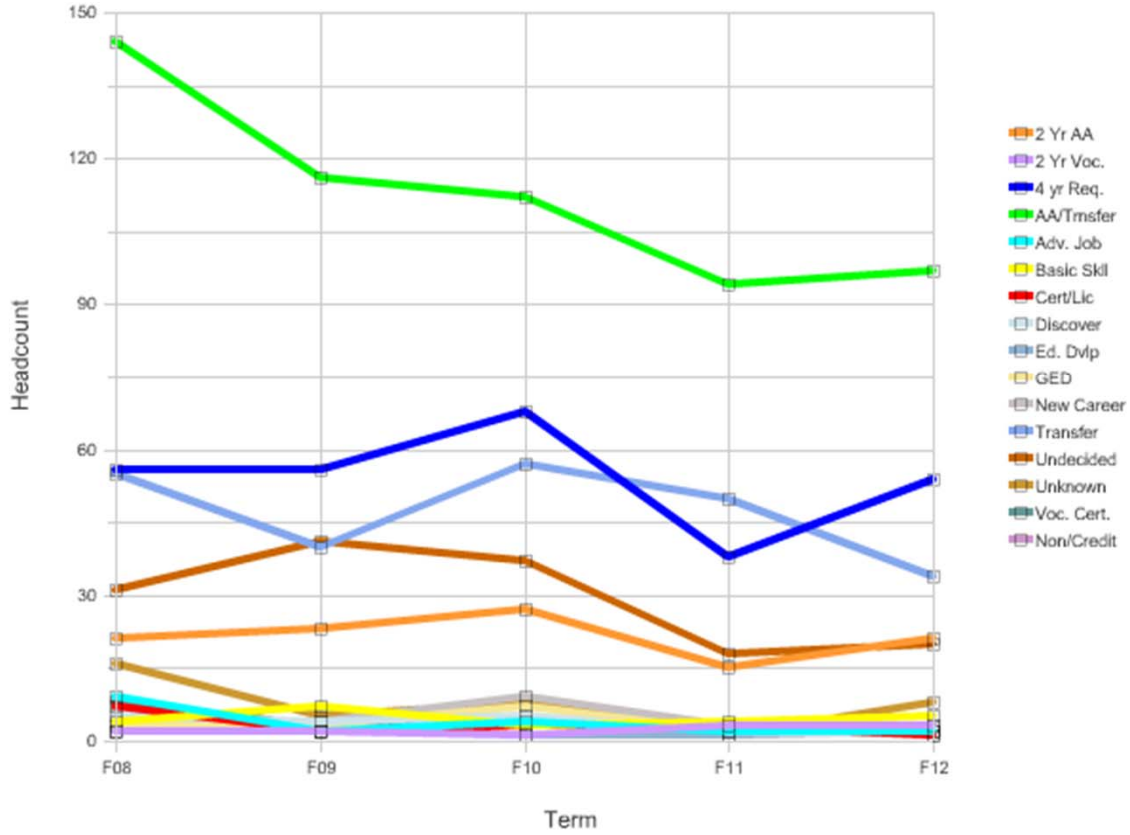
Fall Census EOPS Headcount by Matric Goal



Matric Goal	Headcount					%				
	F08	F09	F10	F11	F12	F08	F09	F10	F11	F12
2 Yr AA	48	36	36	51	66	10%	8%	8%	12%	13%
2 Yr Voc.	1	11	8	9	11	0%	2%	2%	2%	2%
4 yr Req.	91	91	86	89	80	19%	20%	20%	21%	16%
AA/Trnsfer	134	124	114	126	169	27%	27%	27%	30%	33%
Adv. Job	9	11	16	13	11	2%	2%	4%	3%	2%
Basic Skil	15	20	13	18	26	3%	4%	3%	4%	5%
Cert/Lic	14	8	7	7	12	3%	2%	2%	2%	2%
Discover	3	7	6	3	6	1%	2%	1%	1%	1%
Ed. Dvlp	8	5	5	5	2	2%	1%	1%	1%	0%
GED	2	2	4	5	4	0%	0%	1%	1%	1%
New Career	6	6	5	4	4	1%	1%	1%	1%	1%
Transfer	58	53	51	48	58	12%	12%	12%	11%	11%
Undecided	54	60	65	33	35	11%	13%	15%	8%	7%
Unknown	38	13	2	6	5	8%	3%	1%	1%	1%
Voc. Cert.	12	10	9	10	21	2%	2%	2%	2%	4%
Non/Credit		1			1		0%			0%
Grand Total	493	458	427	427	511	100%	100%	100%	100%	100%

Fall Census EOPS Headcount by Matric Goal College Berkeley

Fall Census EOPS Headcount by Matric Goal

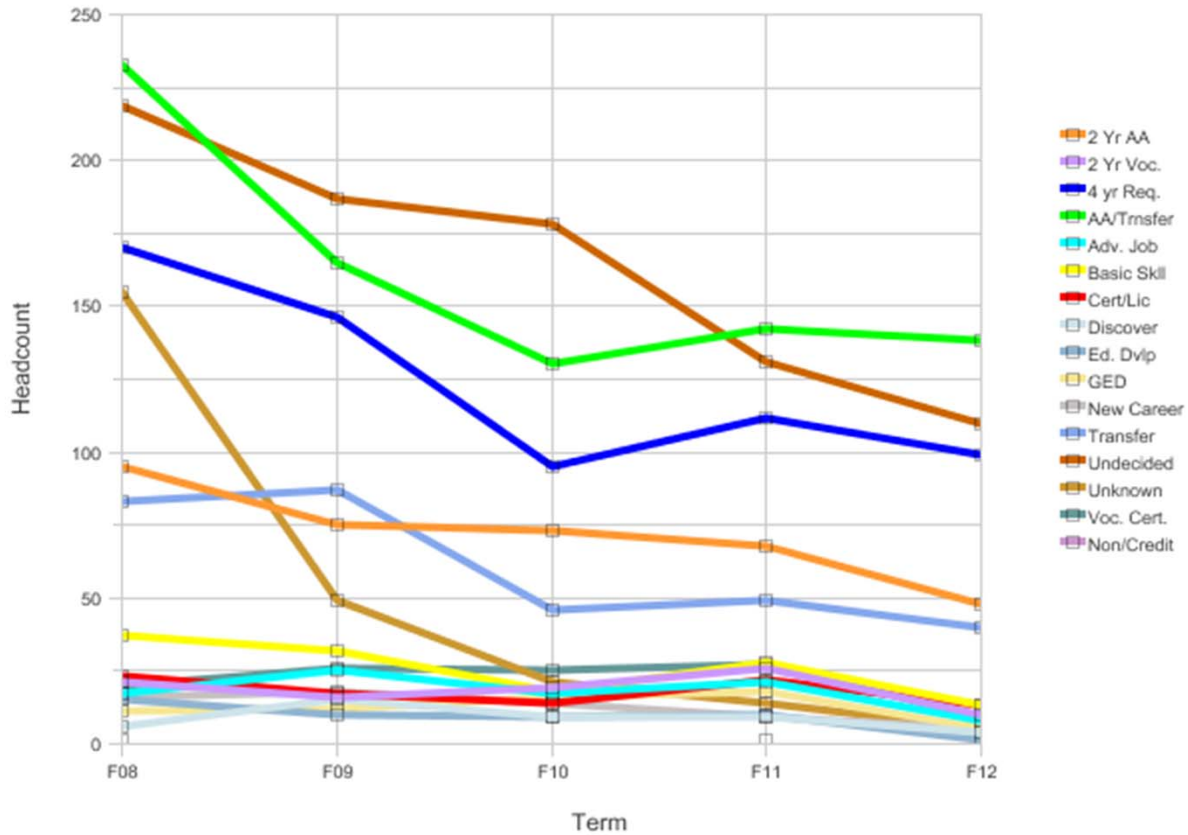


Matric Goal	Headcount					%				
	F08	F09	F10	F11	F12	F08	F09	F10	F11	F12
2 Yr AA	21	23	27	15	21	6%	7%	8%	6%	8%
2 Yr Voc.	2	2	1	3	3	1%	1%	0%	1%	1%
4 yr Req.	56	56	68	38	54	15%	18%	20%	16%	21%
AA/Trnsfer	144	116	112	94	97	40%	37%	32%	40%	38%
Adv. Job	9	2	4	2	2	3%	1%	1%	1%	1%
Basic Skil	4	7	3	4	5	1%	2%	1%	2%	2%
Cert/Lic	7	2	3	3	1	2%	1%	1%	1%	0%
Discover	5	4	5	2	1	1%	1%	1%	1%	0%
Ed. Dvlp	2	2	1	1	2	1%	1%	0%	0%	1%
GED	3	3	7	2		1%	1%	2%	1%	
New Career	2	4	9	3		1%	1%	3%	1%	
Transfer	55	40	57	50	34	15%	13%	16%	21%	13%
Undecided	31	41	37	18	20	9%	13%	11%	8%	8%
Unknown	16	5	8	1	8	4%	2%	2%	0%	3%
Voc. Cert.	8	3	5	2	3	2%	1%	1%	1%	1%
Non/Credit					2					1%
Grand Total	365	310	347	238	253	100%	100%	100%	100%	100%

Fall Census EOPS Headcount by Matric Goal

College Laney

Fall Census EOPS Headcount by Matric Goal

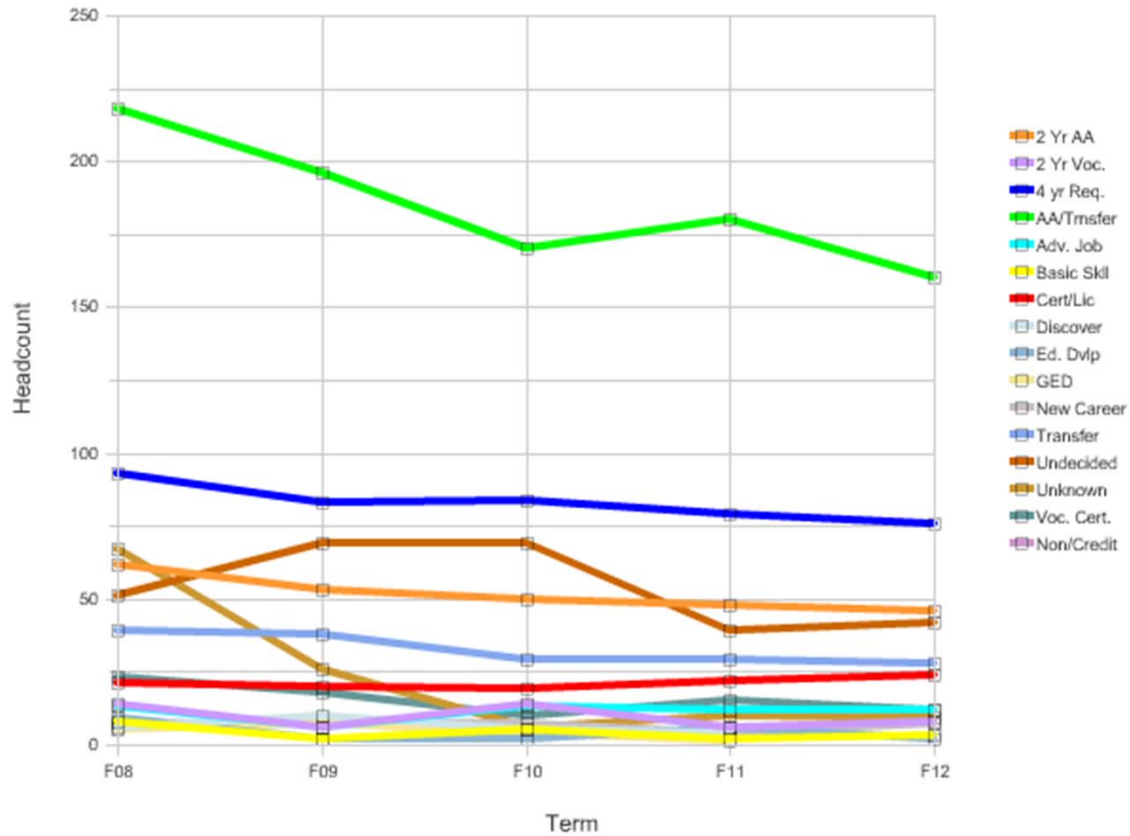


Matric Goal	Headcount					%				
	F08	F09	F10	F11	F12	F08	F09	F10	F11	F12
2 Yr AA	95	75	73	68	48	9%	9%	11%	10%	9%
2 Yr Voc.	21	16	19	26	10	2%	2%	3%	4%	2%
4 yr Req.	170	146	95	112	99	15%	17%	14%	16%	20%
AA/Tnsfer	233	165	130	142	138	21%	19%	19%	21%	27%
Adv. Job	17	25	17	21	8	2%	3%	3%	3%	2%
Basic Skill	37	32	18	28	13	3%	4%	3%	4%	3%
Cert/Lic	23	17	14	22	13	2%	2%	2%	3%	3%
Discover	6	15	9	9	4	1%	2%	1%	1%	1%
Ed. Dvlp	15	10	9	10	1	1%	1%	1%	2%	0%
GED	11	12	16	18	5	1%	1%	2%	3%	1%
New Career	16	18	14	9	5	1%	2%	2%	1%	1%
Transfer	83	87	46	49	40	7%	10%	7%	7%	8%
Undecided	219	187	178	131	110	20%	21%	26%	19%	22%
Unknown	155	49	21	14	5	14%	6%	3%	2%	1%
Voc. Cert.	20	26	25	27	9	2%	3%	4%	4%	2%
Non/Credit	1			1		0%			0%	
Grand Total	1122	880	684	687	508	100%	100%	100%	100%	100%

Fall Census EOPS Headcount by Matric Goal

College Merritt

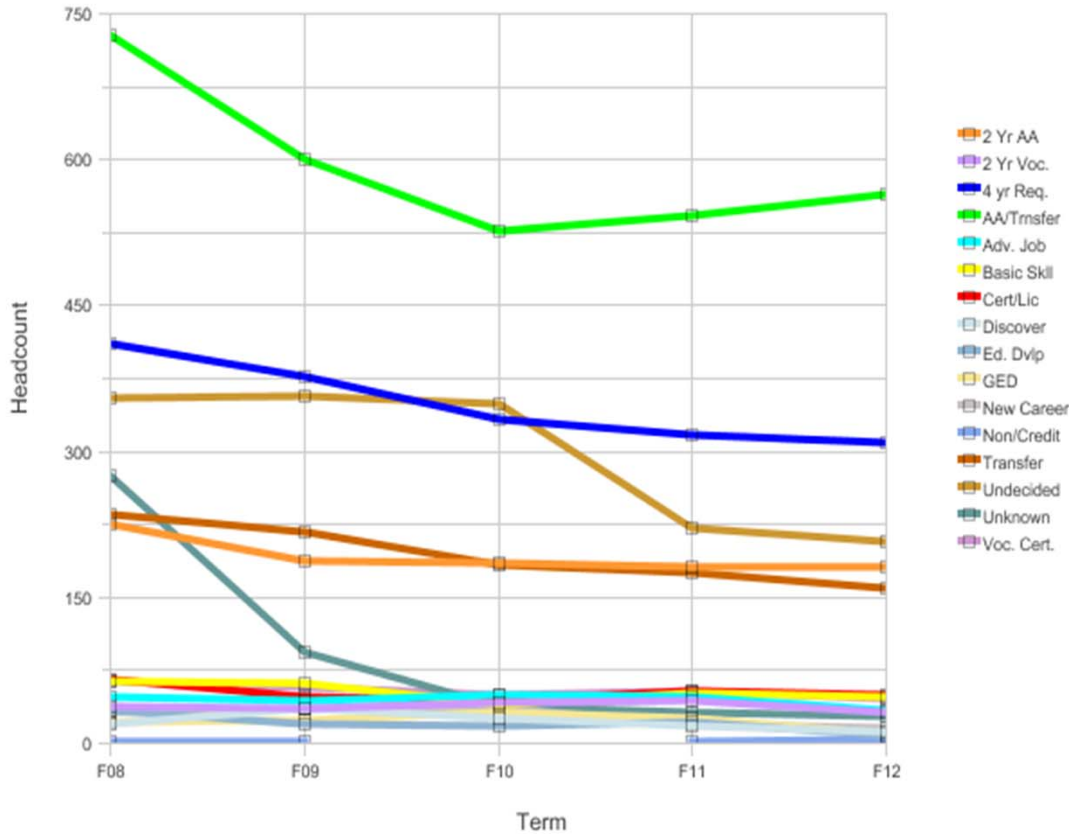
Fall Census EOPS Headcount by Matric Goal



Matric Goal	Headcount					%				
	F08	F09	F10	F11	F12	F08	F09	F10	F11	F12
2 Yr AA	62	53	50	48	46	10%	10%	10%	11%	11%
2 Yr Voc.	14	6	14	6	8	2%	1%	3%	1%	2%
4 yr Req.	93	83	84	79	76	15%	15%	17%	17%	18%
AA/Trnsfer	218	196	170	180	160	34%	36%	35%	39%	37%
Adv. Job	13	6	13	12	12	2%	1%	3%	3%	3%
Basic Skil	8	2	5	2	3	1%	0%	1%	0%	1%
Cert/Lic	21	20	19	22	24	3%	4%	4%	5%	6%
Discover	6	10	5	4		1%	2%	1%	1%	
Ed. Dvlp	9	2	2	6	2	1%	0%	0%	1%	1%
GED	5	7	4	1		1%	1%	1%	0%	
New Career	7	8	7	4	7	1%	2%	1%	1%	2%
Transfer	39	38	29	29	28	6%	7%	6%	6%	7%
Undecided	51	69	69	39	42	8%	13%	14%	9%	10%
Unknown	67	26	6	10	9	11%	5%	1%	2%	2%
Voc. Cert.	23	18	10	15	12	4%	3%	2%	3%	3%
Grand Total	636	544	487	457	429	100%	100%	100%	100%	100%

Fall Census EOPS Headcount by Matric Goal - PCCD

Fall Census EOPS Headcount by Matric Goal



Matric Goal	Headcount					%				
	F08	F09	F10	F11	F12	F08	F09	F10	F11	F12
2 Yr AA	226	187	186	182	181	9%	9%	10%	10%	11%
2 Yr Voc.	38	35	42	44	32	2%	2%	2%	2%	2%
4 yr Req.	410	376	333	318	309	16%	17%	17%	18%	18%
AA/Trnsfer	729	601	526	542	564	28%	27%	27%	30%	33%
Adv. Job	48	44	50	48	33	2%	2%	3%	3%	2%
Basic Skil	64	61	39	52	47	2%	3%	2%	3%	3%
Cert/Lic	65	47	43	54	50	3%	2%	2%	3%	3%
Discover	20	36	25	18	11	1%	2%	1%	1%	1%
Ed. Dvlp	34	19	17	22	7	1%	1%	1%	1%	0%
GED	21	24	31	26	9	1%	1%	2%	1%	1%
New Career	31	36	35	20	16	1%	2%	2%	1%	1%
Non/Credit	1	1		1	3	0%	0%		0%	0%
Transfer	235	218	183	176	160	9%	10%	9%	10%	9%
Undecided	355	357	349	221	207	14%	16%	18%	12%	12%
Unknown	276	93	37	31	27	11%	4%	2%	2%	2%
Voc. Cert.	63	57	49	54	45	2%	3%	3%	3%	3%
Grand Total	2616	2192	1945	1809	1701	100%	100%	100%	100%	100%