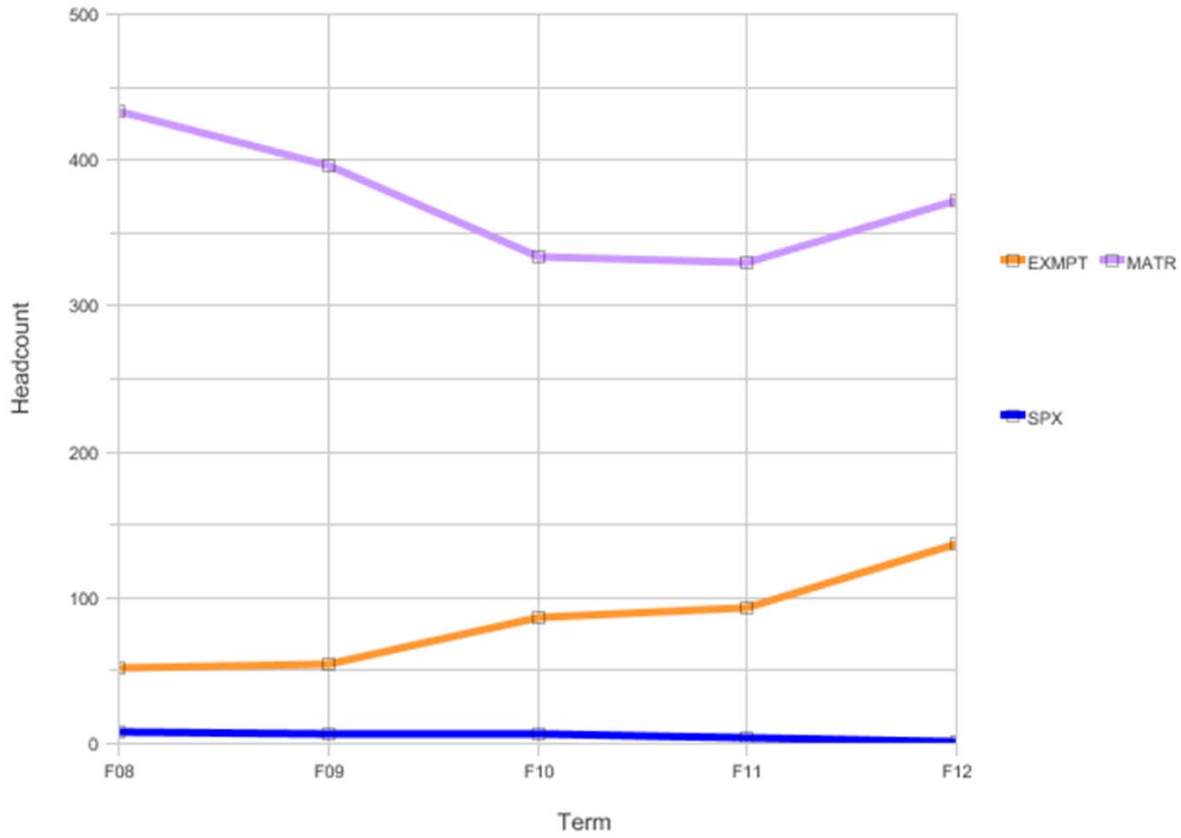


## Fall Census EOPS Headcount by Matric Status

College Alameda

Fall Census EOPS Headcount by Matric Status

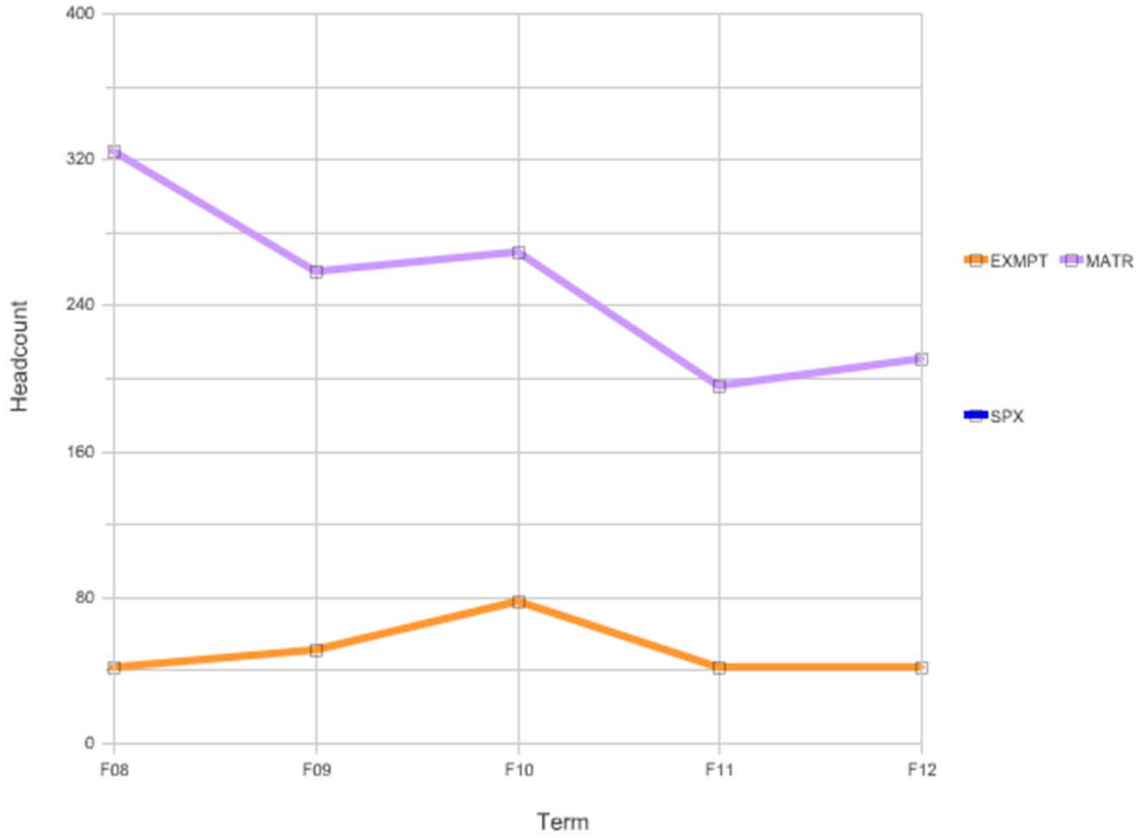


Matric Status	Headcount					%				
	F08	F09	F10	F11	F12	F08	F09	F10	F11	F12
EXMPT	52	55	86	93	137	11%	12%	20%	22%	27%
MATR	433	396	334	330	373	88%	87%	78%	77%	73%
SPX	8	7	7	4	1	2%	2%	2%	1%	0%
<b>Grand Total</b>	<b>493</b>	<b>458</b>	<b>427</b>	<b>427</b>	<b>511</b>	<b>100%</b>	<b>100%</b>	<b>100%</b>	<b>100%</b>	<b>100%</b>

## Fall Census EOPS Headcount by Matric Status

College Berkeley

Fall Census EOPS Headcount by Matric Status

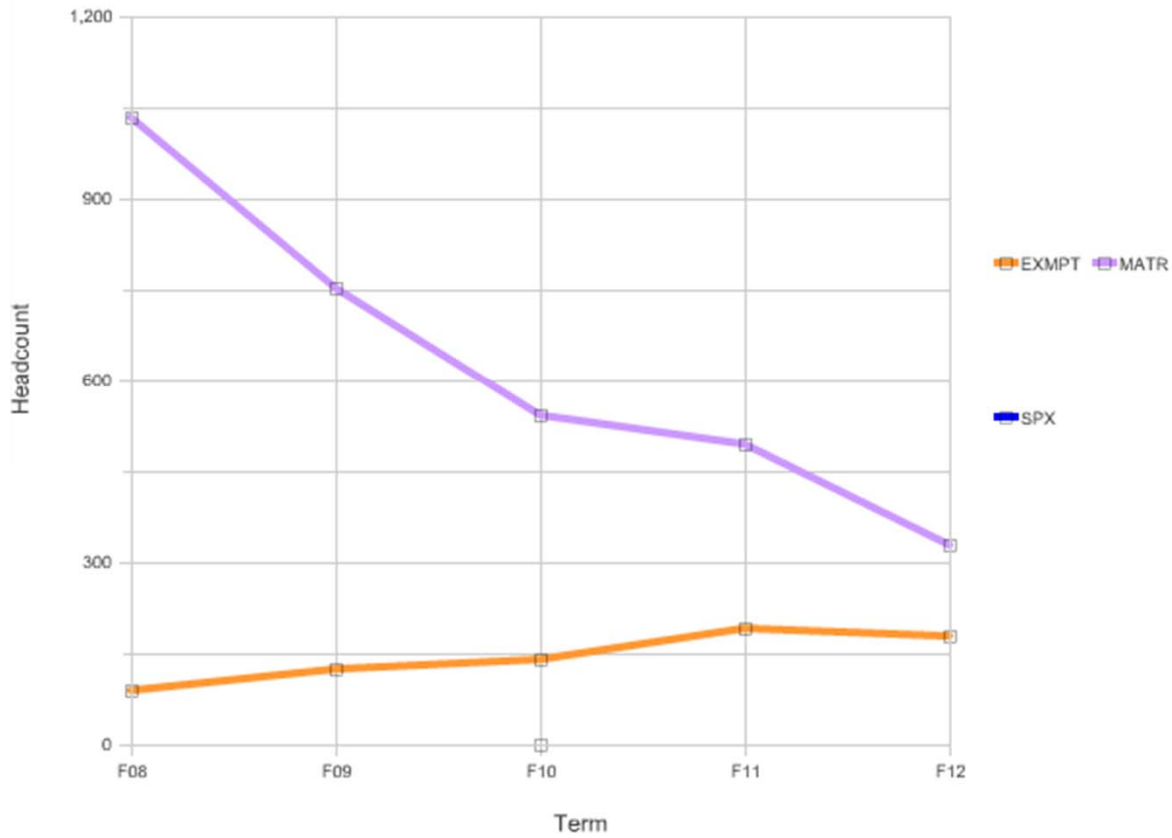


Matric Status	Headcount					%				
	F08	F09	F10	F11	F12	F08	F09	F10	F11	F12
EXMPT	41	51	78	42	42	11%	17%	23%	18%	17%
MATR	324	259	269	196	211	89%	84%	78%	82%	83%
<b>Grand Total</b>	<b>365</b>	<b>310</b>	<b>347</b>	<b>238</b>	<b>253</b>	<b>100%</b>	<b>100%</b>	<b>100%</b>	<b>100%</b>	<b>100%</b>

## Fall Census EOPS Headcount by Matric Status

College Laney

Fall Census EOPS Headcount by Matric Status

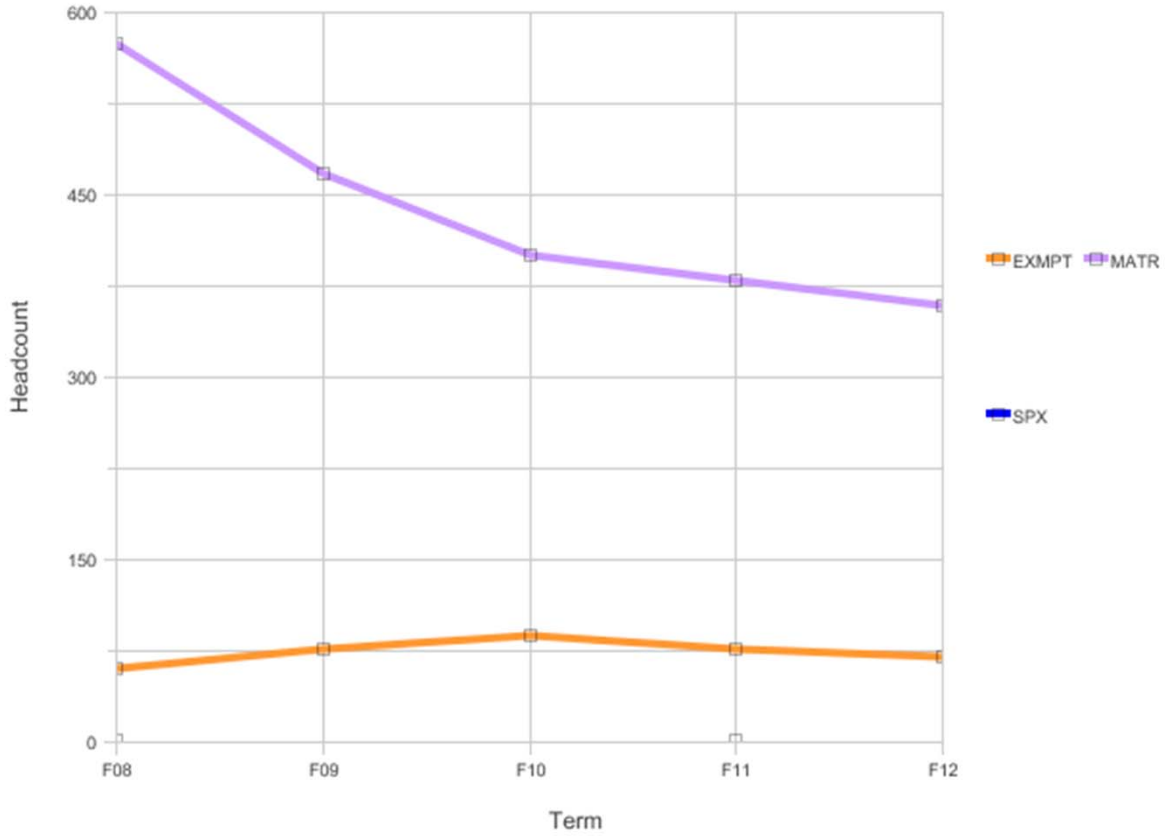


Matric Status	Headcount					%				
	F08	F09	F10	F11	F12	F08	F09	F10	F11	F12
EXMPT	88	126	139	193	179	8%	14%	20%	28%	35%
MATR	1034	754	544	494	329	92%	86%	80%	72%	65%
SPX			1					0%		
<b>Grand Total</b>	<b>1122</b>	<b>880</b>	<b>684</b>	<b>687</b>	<b>508</b>	<b>100%</b>	<b>100%</b>	<b>100%</b>	<b>100%</b>	<b>100%</b>

## Fall Census EOPS Headcount by Matric Status

College **Merritt**

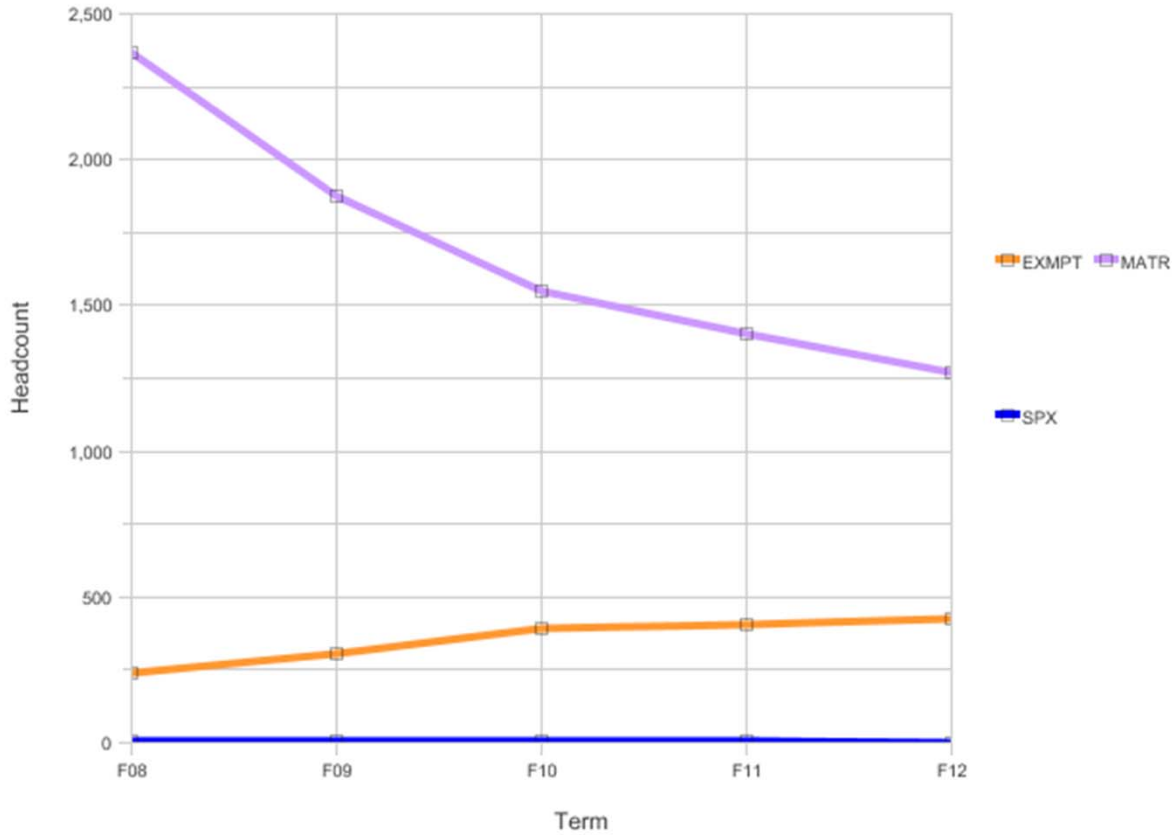
Fall Census EOPS Headcount by Matric Status



Matric Status	Headcount					%				
	F08	F09	F10	F11	F12	F08	F09	F10	F11	F12
EXMPT	61	76	87	76	70	10%	14%	18%	17%	16%
MATR	574	468	400	380	359	90%	86%	82%	83%	84%
SPX	1			1		0%			0%	
<b>Grand Total</b>	<b>636</b>	<b>544</b>	<b>487</b>	<b>457</b>	<b>429</b>	<b>100%</b>	<b>100%</b>	<b>100%</b>	<b>100%</b>	<b>100%</b>

## Fall Census EOPS Headcount by Matric Status - PCCD

Fall Census EOPS Headcount by Matric Status



Matric Status	Headcount					%				
	F08	F09	F10	F11	F12	F08	F09	F10	F11	F12
EXMPT	242	308	390	404	428	9%	14%	20%	22%	25%
MATR	2365	1877	1547	1400	1272	90%	86%	80%	77%	75%
SPX	9	7	8	5	1	0%	0%	0%	0%	0%
<b>Grand Total</b>	<b>2616</b>	<b>2192</b>	<b>1945</b>	<b>1809</b>	<b>1701</b>	<b>100%</b>	<b>100%</b>	<b>100%</b>	<b>100%</b>	<b>100%</b>