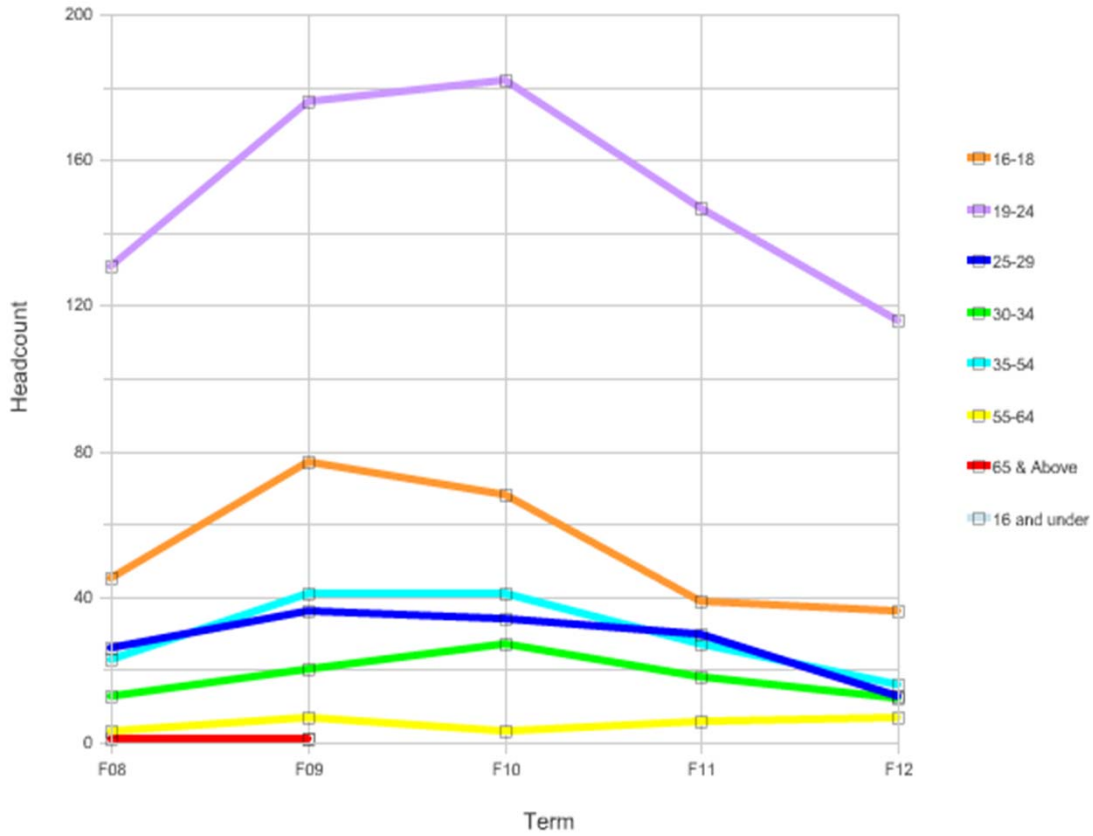


College of Alameda

Fall Census ENGLISH Basic Skills Headcount by Age



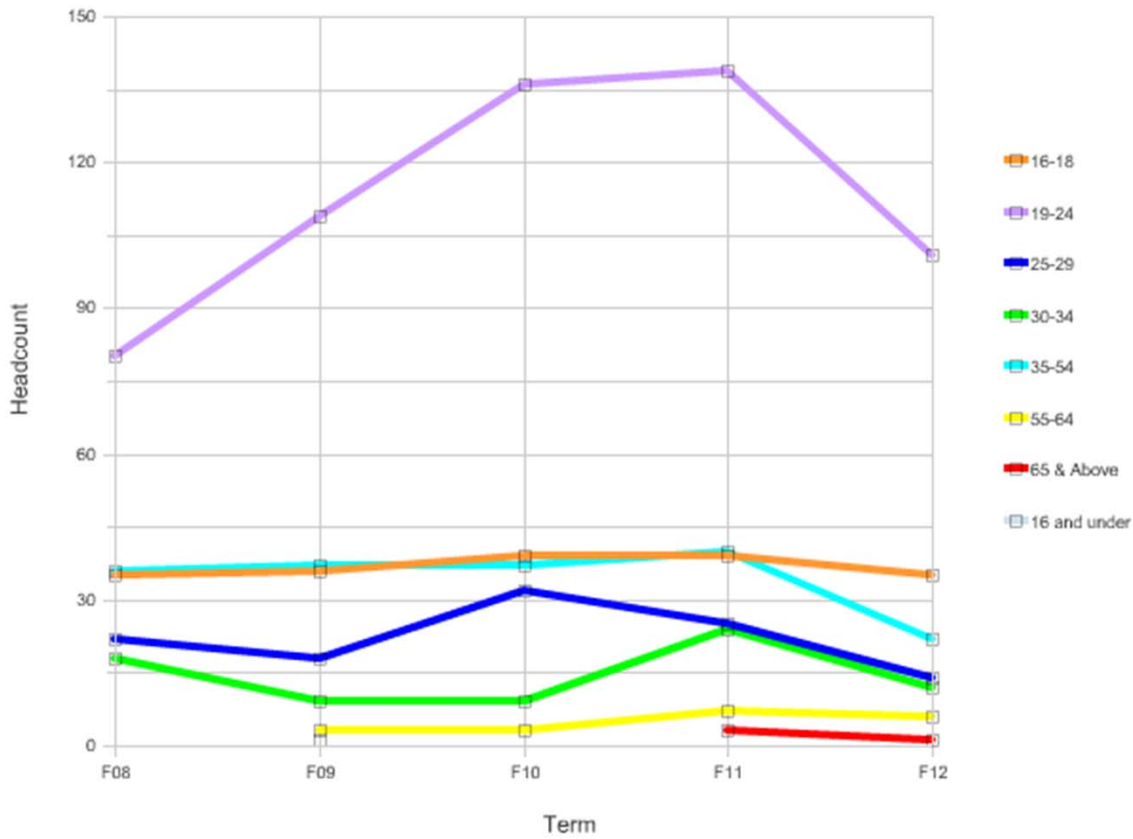
College of Alameda

Age	Headcount					%				
	F08	F09	F10	F11	F12	F08	F09	F10	F11	F12
16-18	45	77	68	39	36	19%	21%	19%	15%	18%
19-24	131	176	182	147	116	54%	49%	51%	55%	58%
25-29	26	36	34	30	13	11%	10%	10%	11%	7%
30-34	13	20	27	18	12	5%	6%	8%	7%	6%
35-54	23	41	41	27	16	10%	11%	12%	10%	8%
55-64	3	7	3	6	7	1%	2%	1%	2%	4%
65 & Above	1	1				0%	0%			
16 and under		1					0%			
Grand Total	242	359	355	267	200	100%	100%	100%	100%	100%

Definition of Basic Skills: CB08 = 'B' and CB04 = 'C' Basic skills credit courses only.

Berkeley City College

Fall Census ENGLISH Basic Skills Headcount by Age



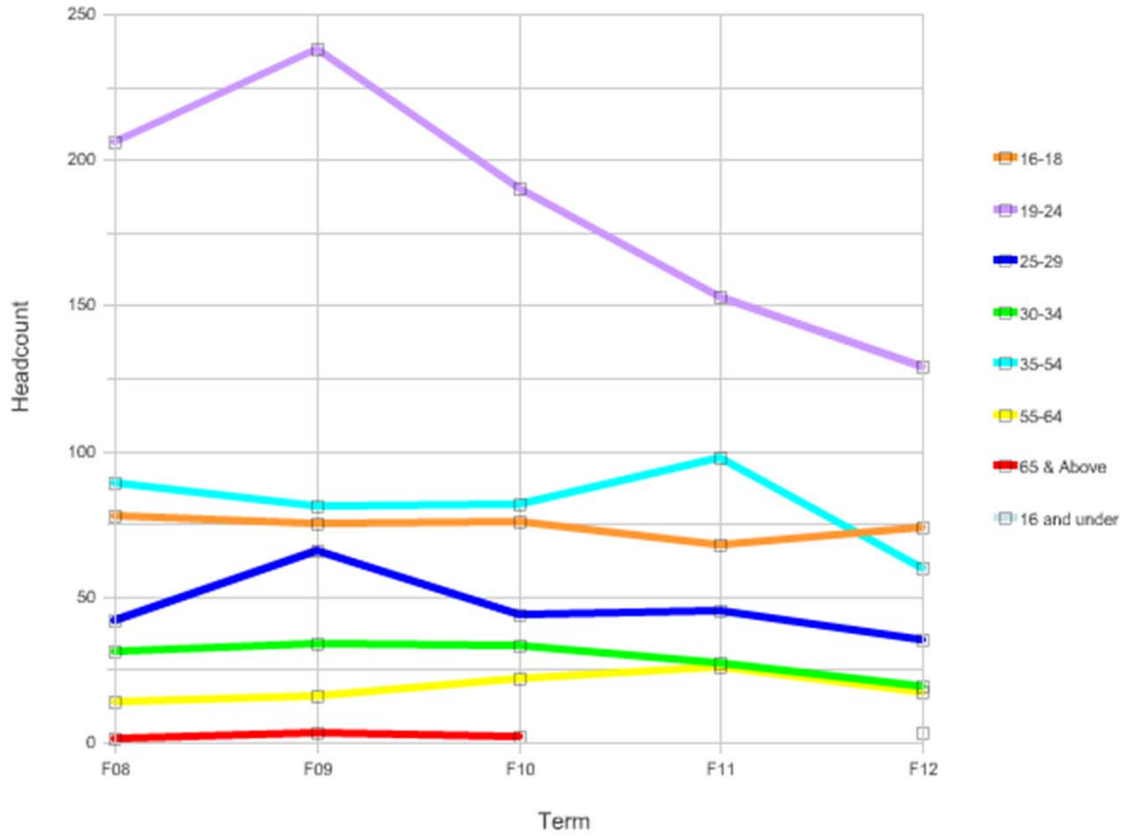
Berkeley City College

Age	Headcount					%				
	F08	F09	F10	F11	F12	F08	F09	F10	F11	F12
16-18	35	36	39	39	35	18%	17%	15%	14%	18%
19-24	80	109	136	139	101	42%	51%	53%	50%	53%
25-29	22	18	32	25	14	12%	9%	13%	9%	7%
30-34	18	9	9	24	12	9%	4%	4%	9%	6%
35-54	36	37	37	40	22	19%	17%	15%	14%	12%
55-64		3	3	7	6		1%	1%	3%	3%
65 & Above		1		3	1		1%		1%	1%
Grand Total	191	213	256	277	191	100%	100%	100%	100%	100%

Definition of Basic Skills: CB08 = 'B' and CB04 = 'C' Basic skills credit courses only.

Laney College

Fall Census ENGLISH Basic Skills Headcount by Age



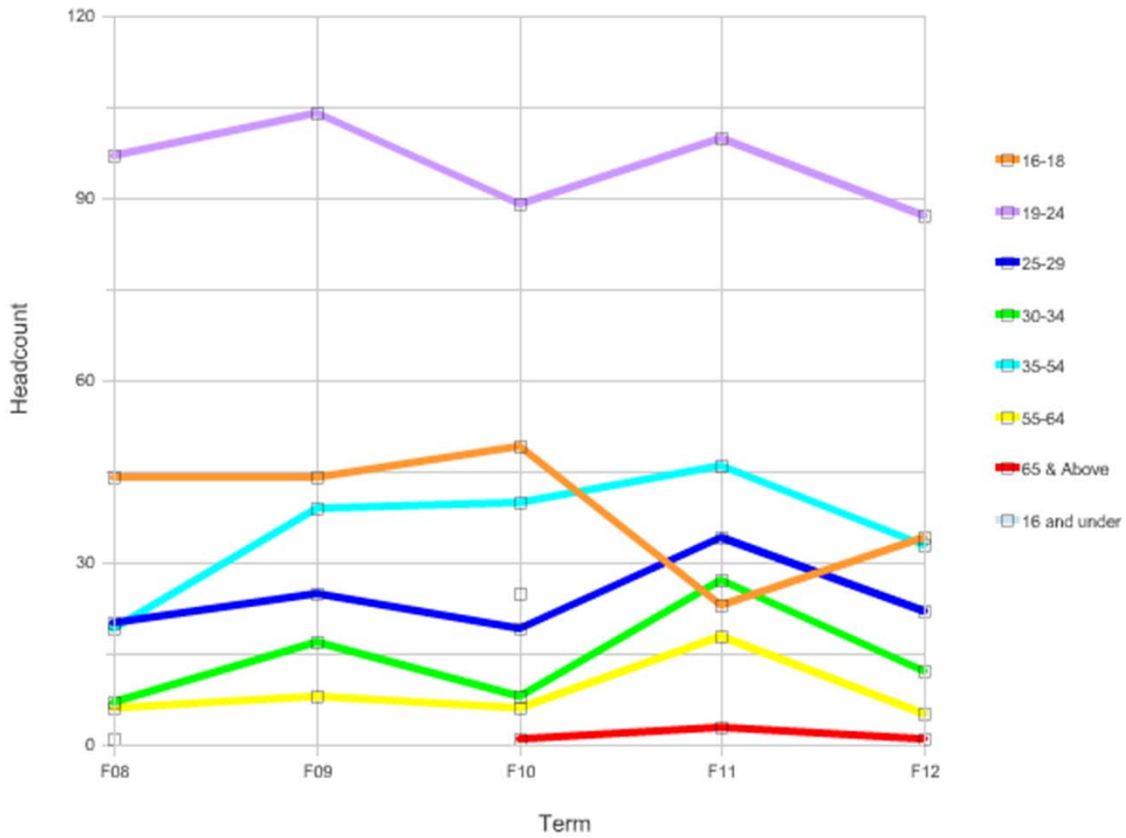
Laney College

Age	Headcount					%				
	F08	F09	F10	F11	F12	F08	F09	F10	F11	F12
16-18	78	75	76	68	74	17%	15%	17%	16%	22%
19-24	206	238	190	153	129	45%	46%	42%	37%	38%
25-29	42	66	44	45	35	9%	13%	10%	11%	10%
30-34	31	34	33	27	19	7%	7%	7%	7%	6%
35-54	89	81	82	98	60	19%	16%	18%	24%	18%
55-64	14	16	22	26	17	3%	3%	5%	6%	5%
65 & Above	1	3	2	3	0	0%	1%	0%	0%	1%
Grand Total	461	513	449	417	337	100%	100%	100%	100%	100%

Definition of Basic Skills: CB08 = 'B' and CB04 = 'C' Basic skills credit courses only.

Merritt College

Fall Census ENGLISH Basic Skills Headcount by Age



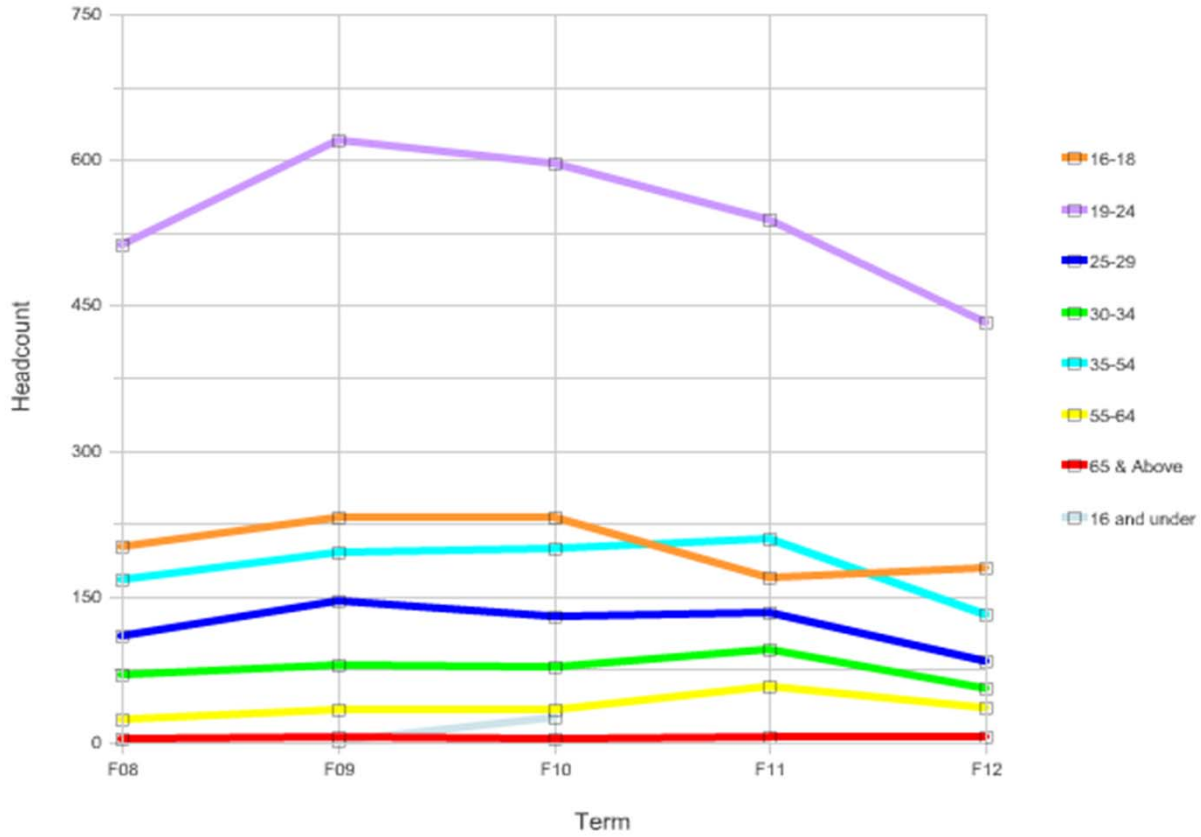
Merritt College

Age	Headcount					%				
	F08	F09	F10	F11	F12	F08	F09	F10	F11	F12
16-18	44	44	49	23	34	23%	19%	21%	9%	18%
19-24	97	104	89	100	87	50%	44%	38%	40%	45%
25-29	20	25	19	34	22	10%	11%	8%	14%	11%
30-34	7	17	8	27	12	4%	7%	3%	11%	6%
35-54	19	39	40	46	33	10%	17%	17%	18%	17%
55-64	6	8	6	18	5	3%	3%	3%	7%	3%
65 & Above	1		1	3	1	1%		0%	1%	1%
16 and under			25					11%		
Grand Total	194	237	237	251	194	100%	100%	100%	100%	100%

Definition of Basic Skills: CB08 = 'B' and CB04 = 'C' Basic skills credit courses only.

Fall Census ENGLISH Basic Skills Headcount by Age - PCCD

Fall Census ENGLISH Basic Skills Headcount by Age



Date run: 7/8/2013

Age	Headcount					%				
	F08	F09	F10	F11	F12	F08	F09	F10	F11	F12
16-18	202	232	231	169	179	19%	18%	18%	14%	20%
19-24	513	620	596	539	432	47%	47%	46%	45%	47%
25-29	109	145	129	134	83	10%	11%	10%	11%	9%
30-34	69	80	77	96	55	6%	6%	6%	8%	6%
35-54	167	196	199	210	131	15%	15%	15%	17%	14%
55-64	23	34	34	57	35	2%	3%	3%	5%	4%
65 & Above	3	5	3	6	5	0%	0%	0%	1%	1%
16 and under		1	25				0%	2%		
Grand Total	1086	1313	1294	1211	920	100%	100%	100%	100%	100%

Definition of Basic Skills: CB08 = 'B' and CB04 = 'C' Basic skills credit courses only.