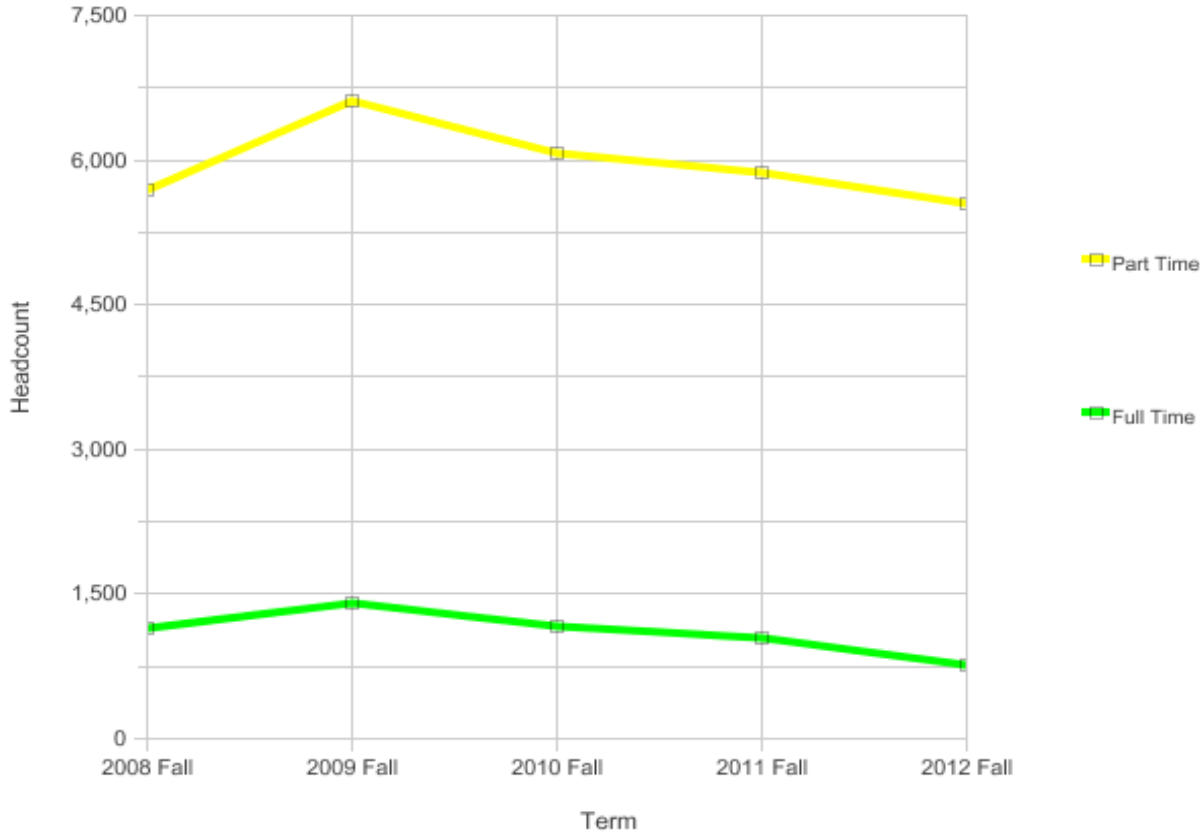


Date run: 3/7/2013

Data source: BI Tool.

College of Alameda

Fall Census Headcount by Full/Part-Time Status



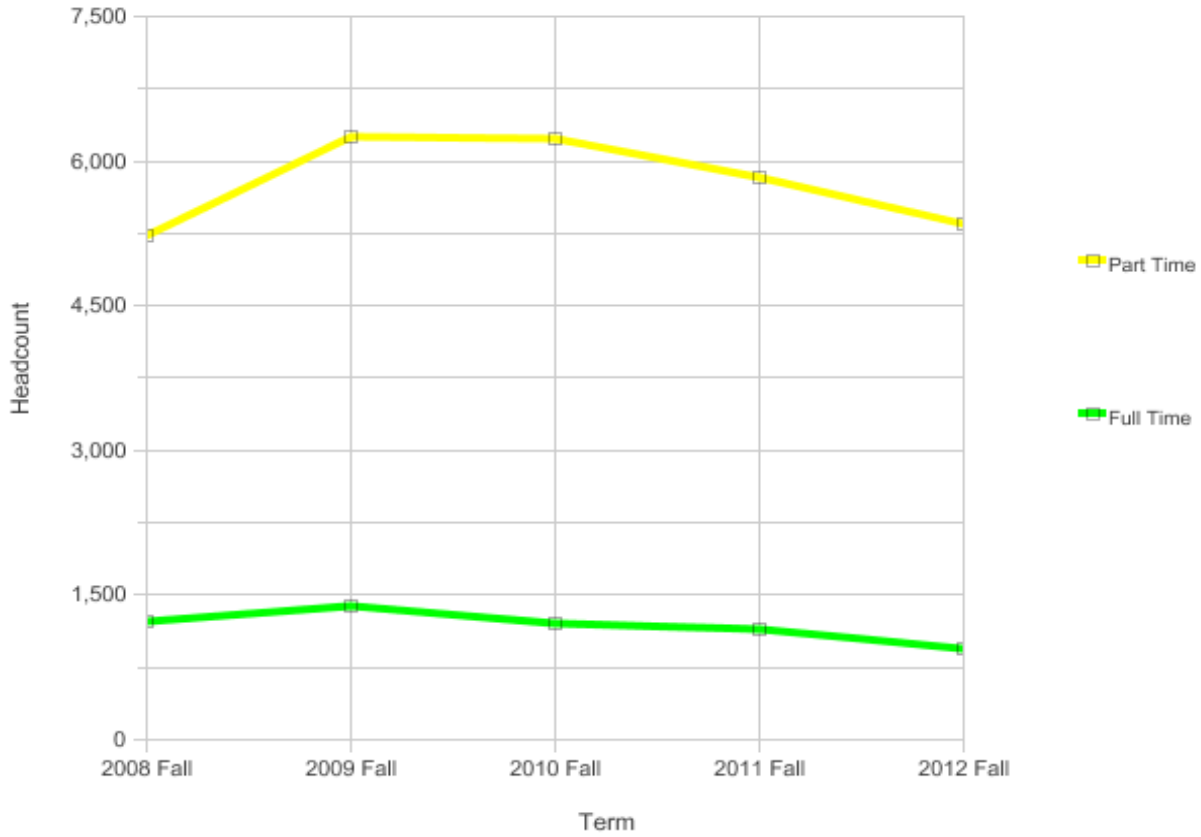
Full time/Part time	Headcount					Percent				
	2008 Fall	2009 Fall	2010 Fall	2011 Fall	2012 Fall	2008 Fall	2009 Fall	2010 Fall	2011 Fall	2012 Fall
Part Time	5,692	6,617	6,078	5,881	5,542	83.3%	82.5%	84.0%	85.0%	88.0%
Full Time	1,141	1,402	1,157	1,038	756	16.7%	17.5%	16.0%	15.0%	12.0%
Grand Total	6,833	8,019	7,235	6,919	6,298	100.0%	100.0%	100.0%	100.0%	100.0%

Date run: 3/7/2013

Data source: BI Tool.

Berkeley City College

Fall Census Headcount by Full/Part-Time Status



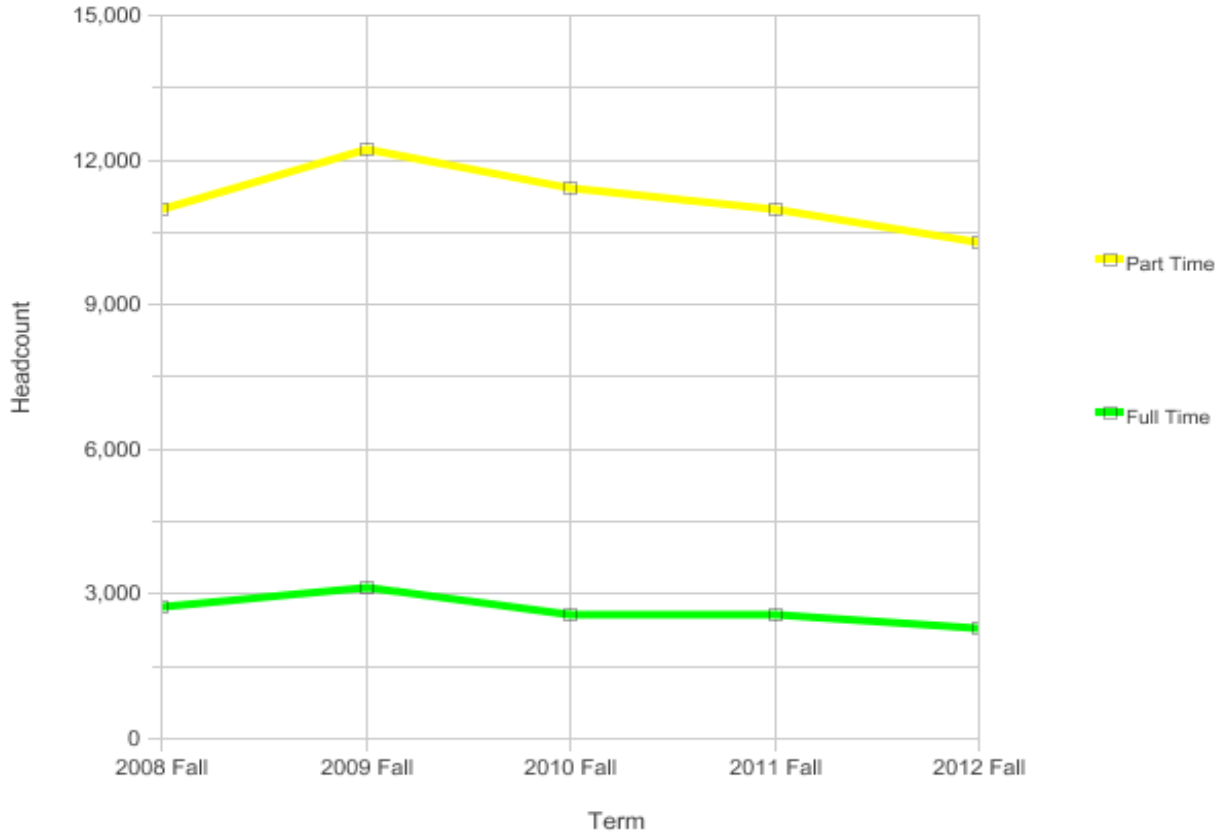
Full time/Part time	Headcount					Percent				
	2008 Fall	2009 Fall	2010 Fall	2011 Fall	2012 Fall	2008 Fall	2009 Fall	2010 Fall	2011 Fall	2012 Fall
Part Time	5,225	6,254	6,240	5,823	5,350	81.0%	81.8%	83.8%	83.5%	84.9%
Full Time	1,229	1,393	1,210	1,154	955	19.0%	18.2%	16.2%	16.5%	15.1%
Grand Total	6,454	7,647	7,450	6,977	6,305	100.0%	100.0%	100.0%	100.0%	100.0%

Date run: 3/7/2013

Data source: BI Tool.

Laney College

Fall Census Headcount by Full/Part-Time Status



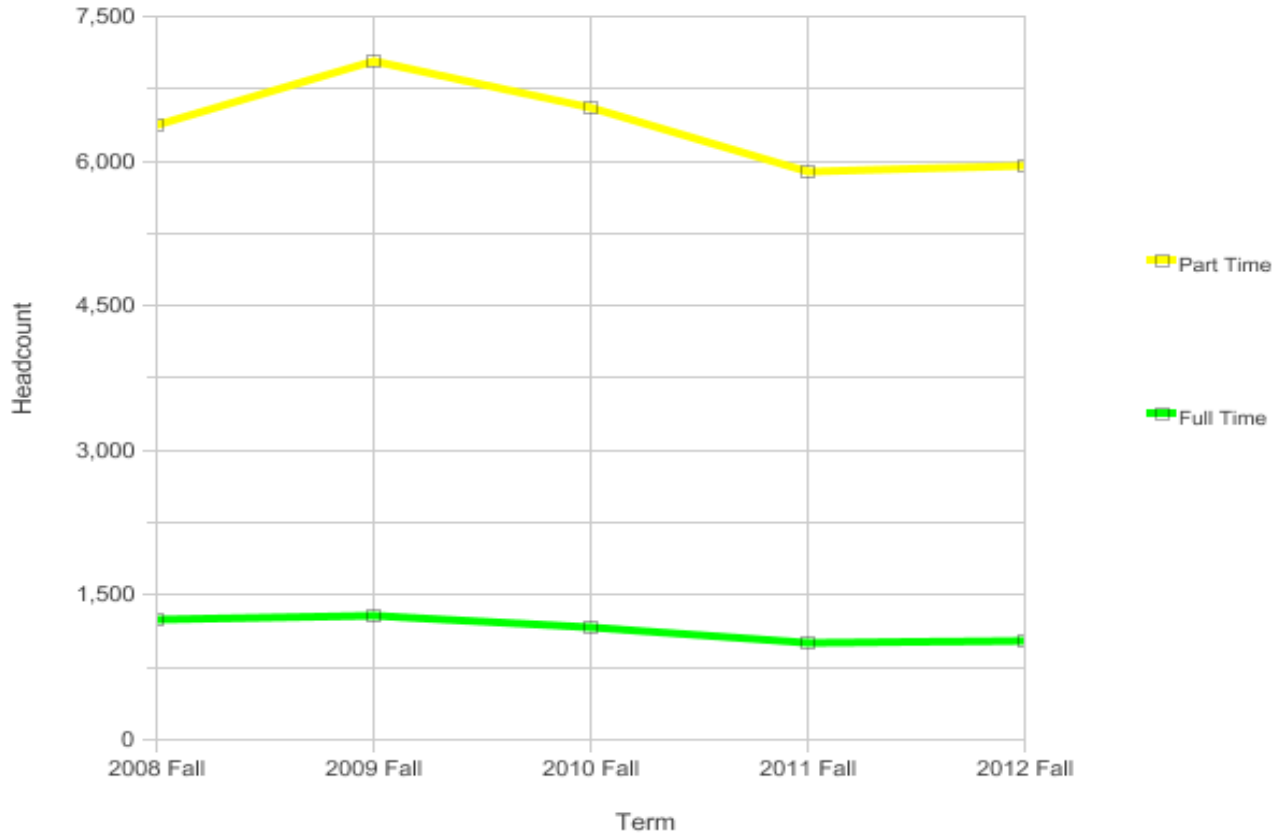
Full time/Part time	Headcount					Percent				
	2008 Fall	2009 Fall	2010 Fall	2011 Fall	2012 Fall	2008 Fall	2009 Fall	2010 Fall	2011 Fall	2012 Fall
Part Time	10,974	12,226	11,441	10,969	10,313	80.10%	79.60%	81.50%	81.10%	81.90%
Full Time	2,724	3,125	2,593	2,558	2,278	19.90%	20.40%	18.50%	18.90%	18.10%
Grand Total	13,698	15,351	14,034	13,527	12,591	100.00%	100.00%	100.00%	100.00%	100.00%

Date run: 3/7/2013

Data source: BI Tool.

Merritt College

Fall Census Headcount by Full/Part-Time Status



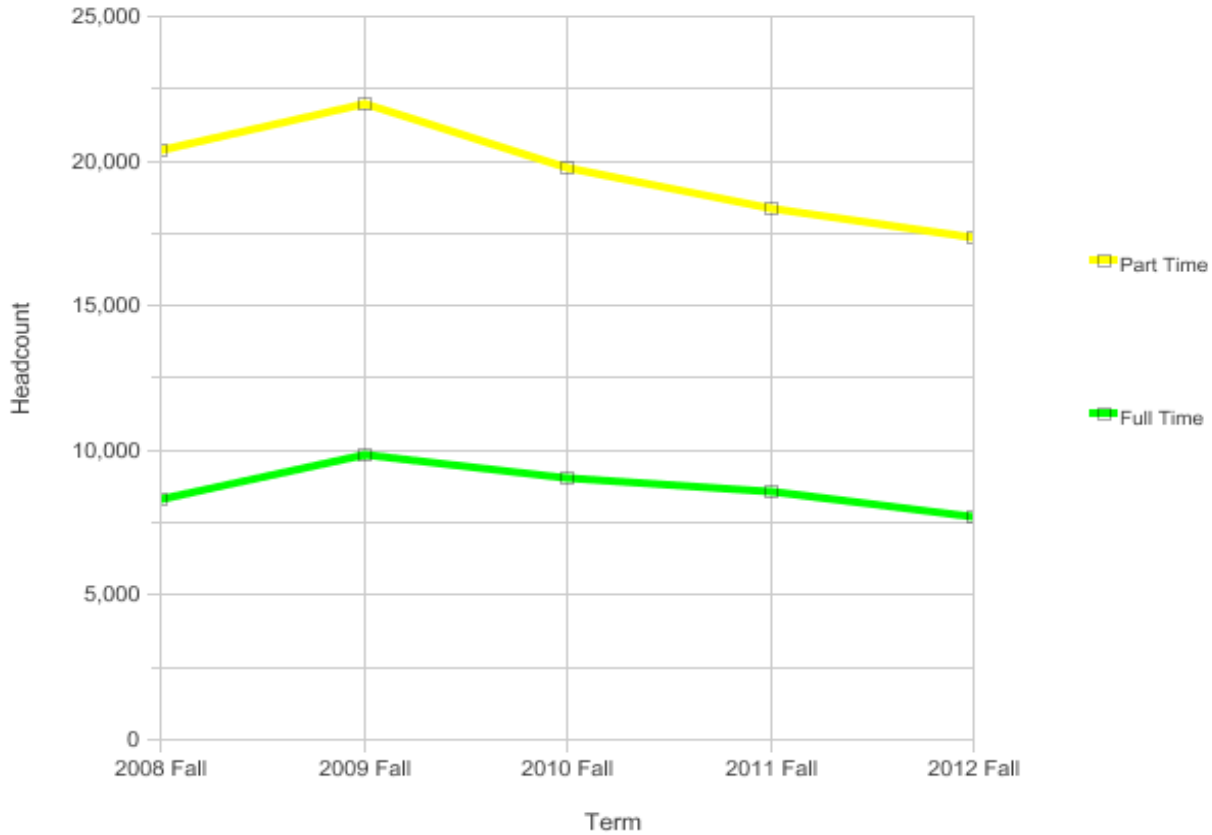
Full time/Part time	Headcount					Percent				
	2008 Fall	2009 Fall	2010 Fall	2011 Fall	2012 Fall	2008 Fall	2009 Fall	2010 Fall	2011 Fall	2012 Fall
Part Time	6,371	7,037	6,562	5,896	5,960	83.7%	84.6%	85.0%	85.4%	85.4%
Full Time	1,237	1,284	1,158	1,005	1,022	16.3%	15.4%	15.0%	14.6%	14.6%
Grand Total	7,608	8,321	7,720	6,901	6,982	100.0%	100.0%	100.0%	100.0%	100.0%

Date run: 3/7/2013

Data source: BI Tool.

Peralta Community College District

Fall Census Headcount by Full/Part-Time Status



Full time/Part time	Headcount					Percent				
	2008 Fall	2009 Fall	2010 Fall	2011 Fall	2012 Fall	2008 Fall	2009 Fall	2010 Fall	2011 Fall	2012 Fall
Part Time	20,369	21,996	19,776	18,389	17,329	71.1%	69.1%	68.7%	68.3%	69.2%
Full Time	8,278	9,859	9,020	8,551	7,706	28.9%	30.9%	31.3%	31.7%	30.8%
Grand Total	28,647	31,855	28,796	26,940	25,035	100.0%	100.0%	100.0%	100.0%	100.0%