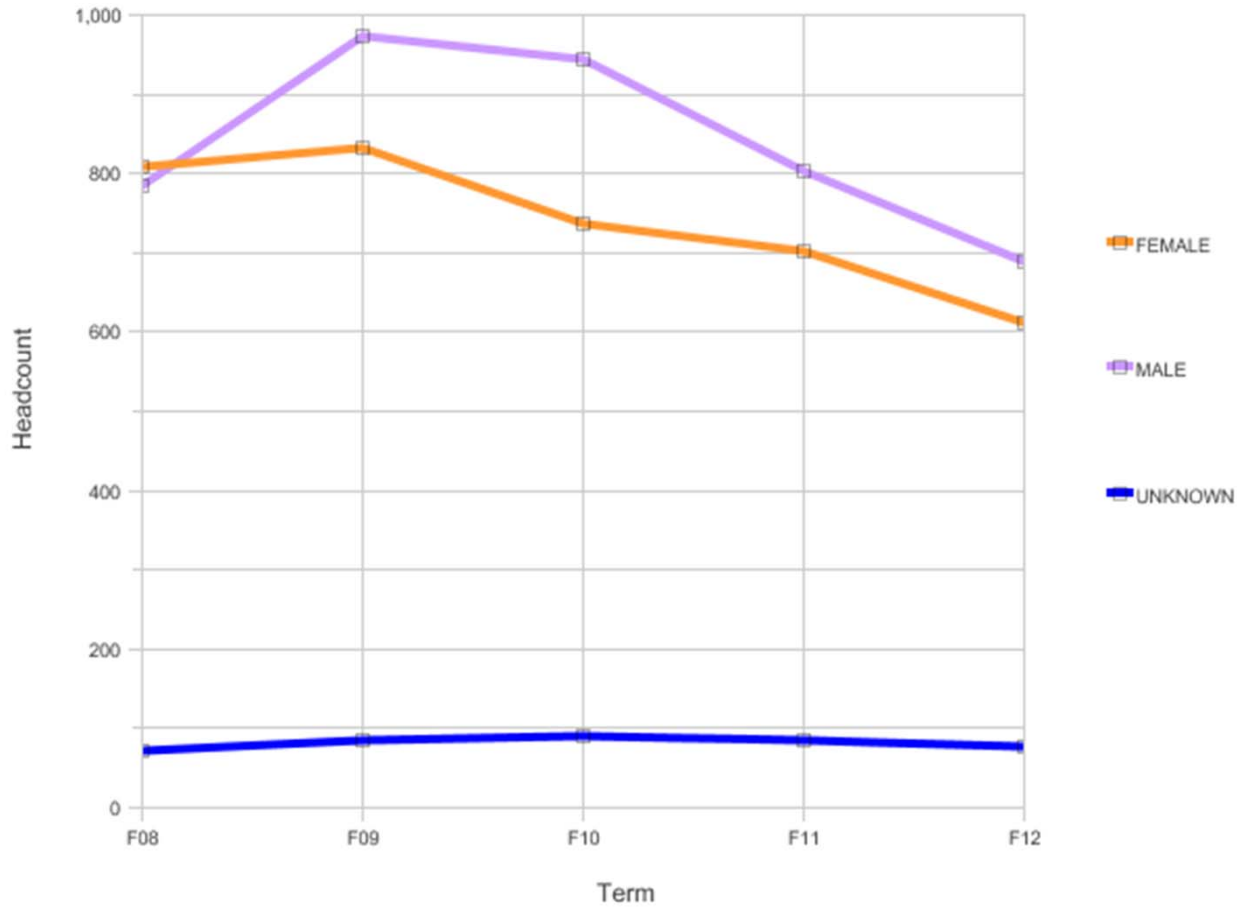


Fall Census Headcount of CTE students by Gender

Date run: 8/6/2013

College of Alameda

Fall Census CTE Students Headcount by Gender



Gender	Headcount					%				
	F08	F09	F10	F11	F12	F08	F09	F10	F11	F12
FEMALE	809	833	738	703	611	49%	44%	42%	44%	44%
MALE	784	973	943	802	689	47%	52%	53%	50%	50%
UNKNOWN	72	85	90	85	78	4%	5%	5%	5%	6%
Grand Total	1665	1891	1771	1590	1378	100%	100%	100%	100%	100%

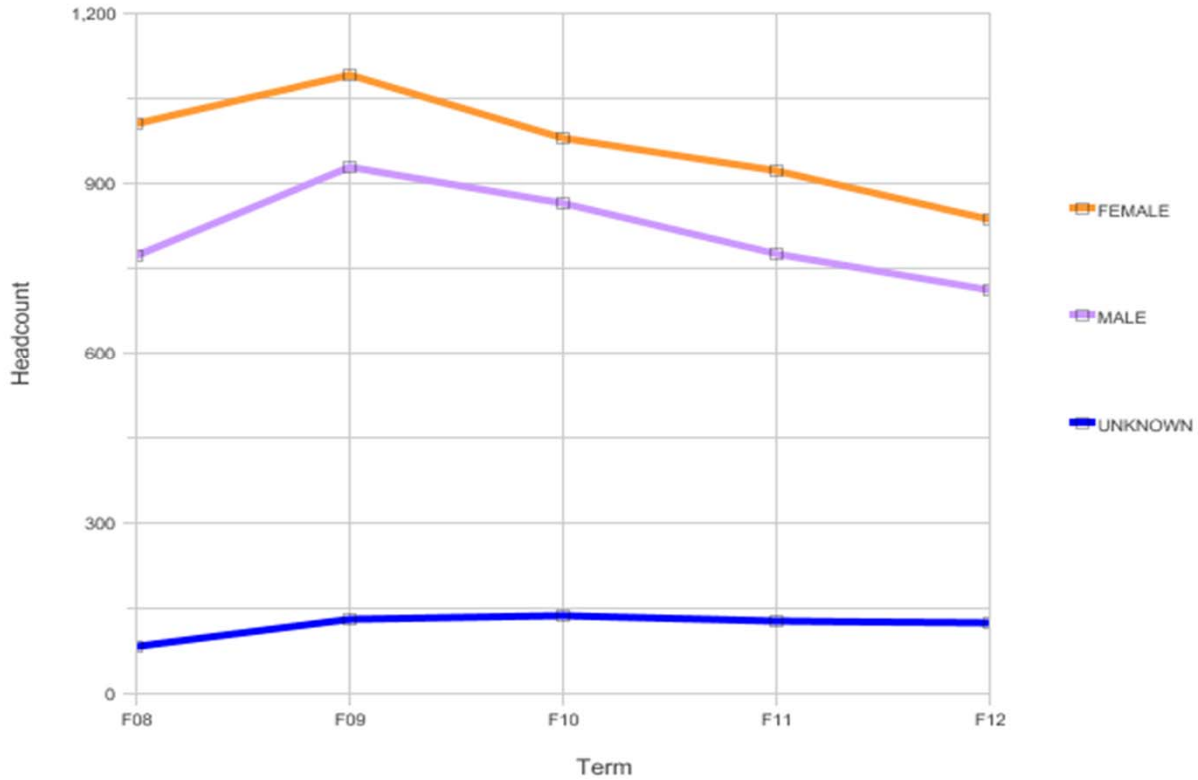
Students are counted as vocational when they are enrolled in at least one vocational course (SAM code A, B, C, or D) at the college.

Fall Census Headcount of CTE students by Gender

Date run: 8/6/2013

Berkeley City College

Fall Census CTE Students Headcount by Gender



Gender	Headcount					%				
	F08	F09	F10	F11	F12	F08	F09	F10	F11	F12
FEMALE	1005	1093	981	922	837	54%	51%	49%	51%	50%
MALE	772	929	866	775	711	42%	43%	44%	43%	43%
UNKNOWN	83	131	138	128	125	5%	6%	7%	7%	8%
Grand Total	1860	2153	1985	1825	1673	100%	100%	100%	100%	100%

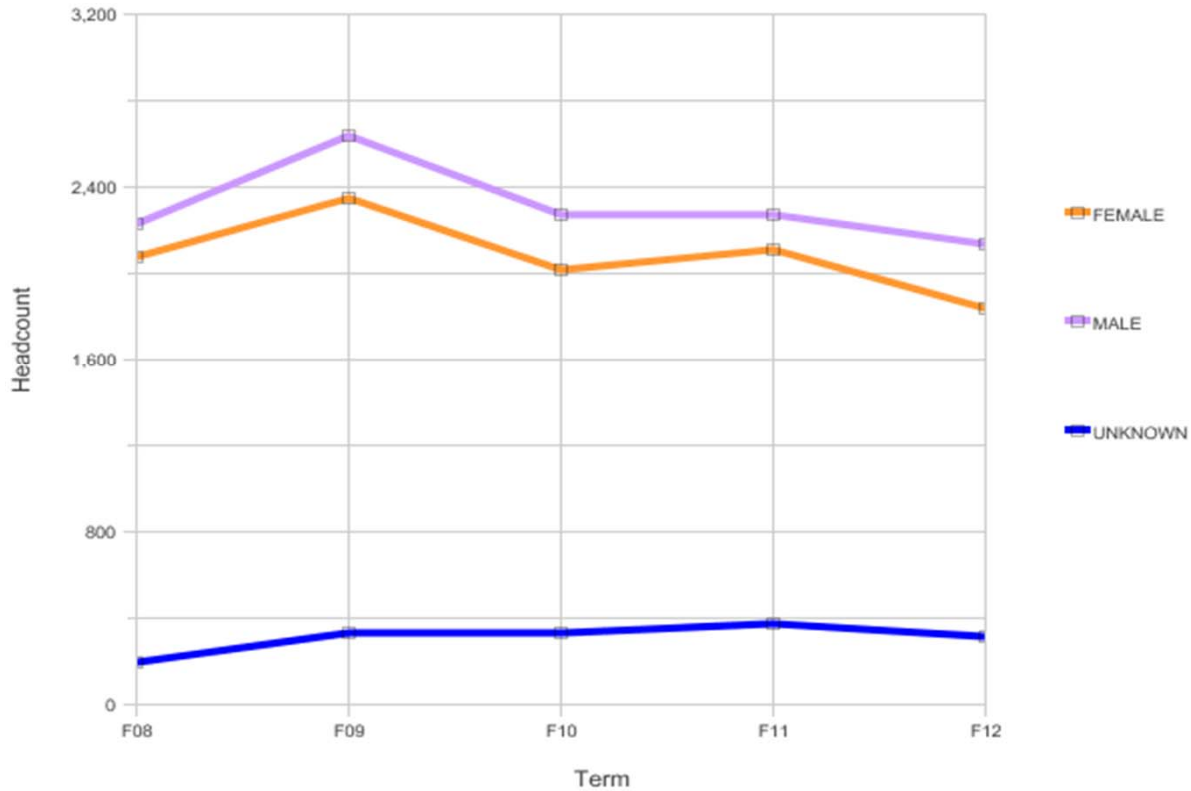
Students are counted as vocational when they are enrolled in at least one vocational course (SAM code A, B, C, or D) at the college.

Fall Census Headcount of CTE students by Gender

Date run: 8/6/2013

Laney College

Fall Census CTE Students Headcount by Gender



Gender	Headcount					%				
	F08	F09	F10	F11	F12	F08	F09	F10	F11	F12
FEMALE	2074	2352	2013	2113	1836	46%	44%	44%	44%	43%
MALE	2229	2641	2270	2275	2132	50%	50%	49%	48%	50%
UNKNOWN	193	334	330	372	315	4%	6%	7%	8%	7%
Grand Total	4496	5327	4613	4760	4283	100%	100%	100%	100%	100%

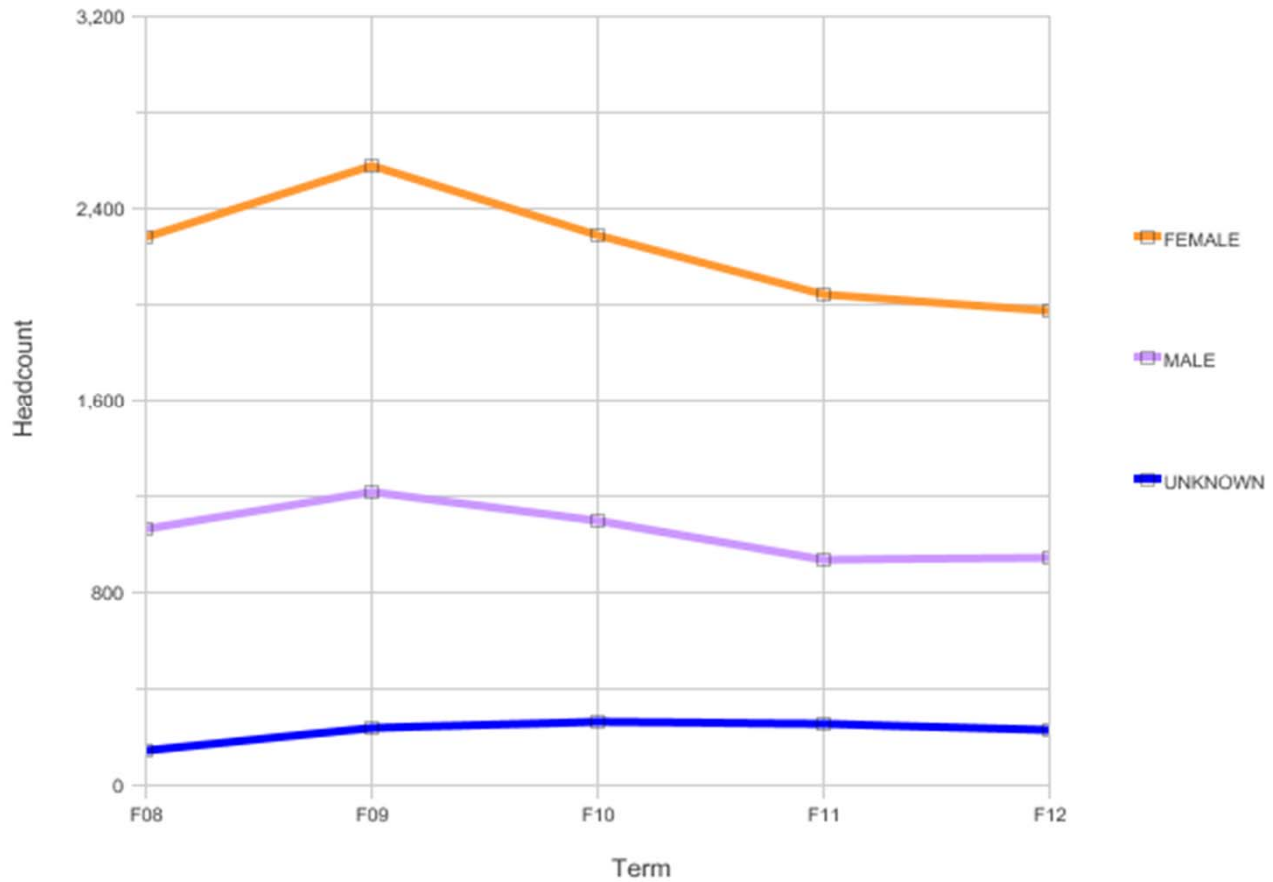
Students are counted as vocational when they are enrolled in at least one vocational course (SAM code A, B, C, or D) at the college.

Fall Census Headcount of CTE students by Gender

Date run: 8/6/2013

Merritt College

Fall Census CTE Students Headcount by Gender



Gender	Headcount					%				
	F08	F09	F10	F11	F12	F08	F09	F10	F11	F12
FEMALE	2277	2577	2287	2043	1974	65%	64%	63%	63%	63%
MALE	1064	1213	1101	936	948	31%	30%	30%	29%	30%
UNKNOWN	144	239	265	252	227	4%	6%	7%	8%	7%
Grand Total	3485	4029	3653	3231	3149	100%	100%	100%	100%	100%

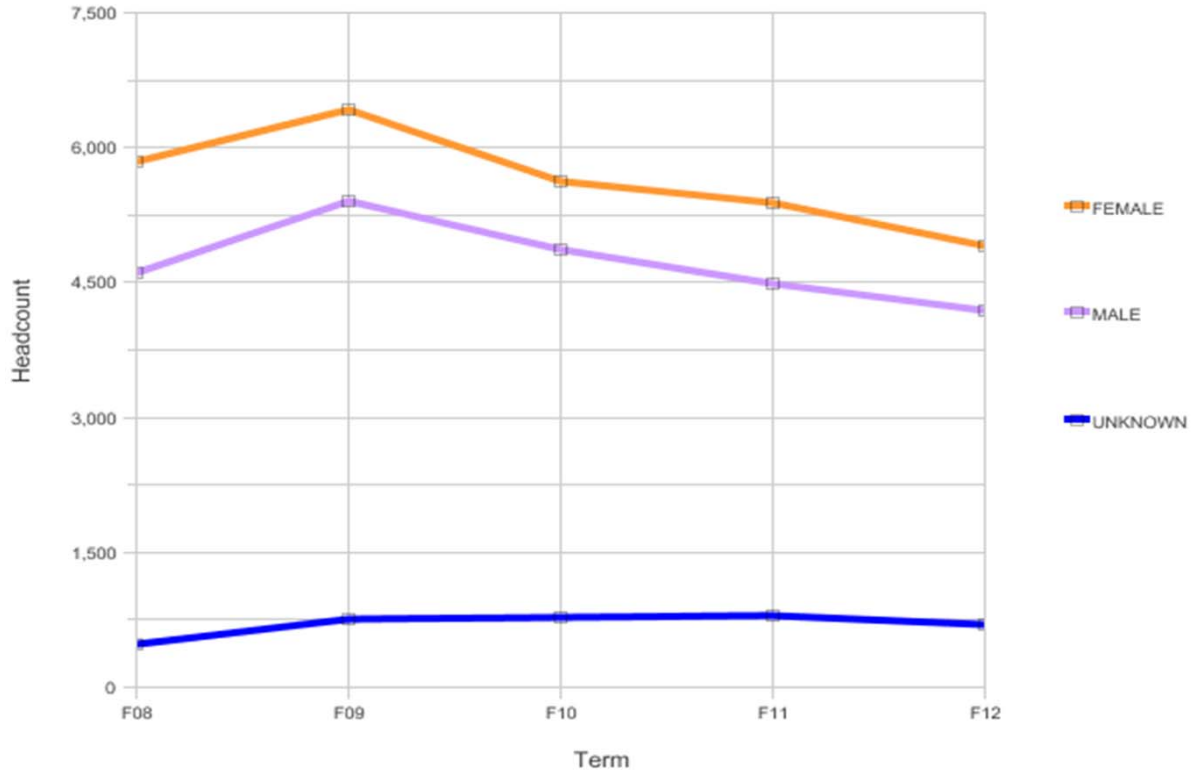
Students are counted as vocational when they are enrolled in at least one vocational course (SAM code A, B, C, or D) at the college.

Peralta Community College District

Fall Census Headcount of CTE students by Gender

Date run: 8/6/2013

Fall Census CTE Students Headcount by Gender



Gender	Headcount					%				
	F08	F09	F10	F11	F12	F08	F09	F10	F11	F12
FEMALE	5846	6416	5625	5383	4906	54%	51%	50%	50%	50%
MALE	4611	5407	4863	4491	4194	42%	43%	43%	42%	43%
UNKNOWN	479	751	773	799	708	4%	6%	7%	8%	7%
Grand Total	10936	12574	11261	10673	9808	100%	100%	100%	100%	100%

Students are counted as vocational when they are enrolled in at least one vocational course (SAM code A, B, C, or D) at the college.