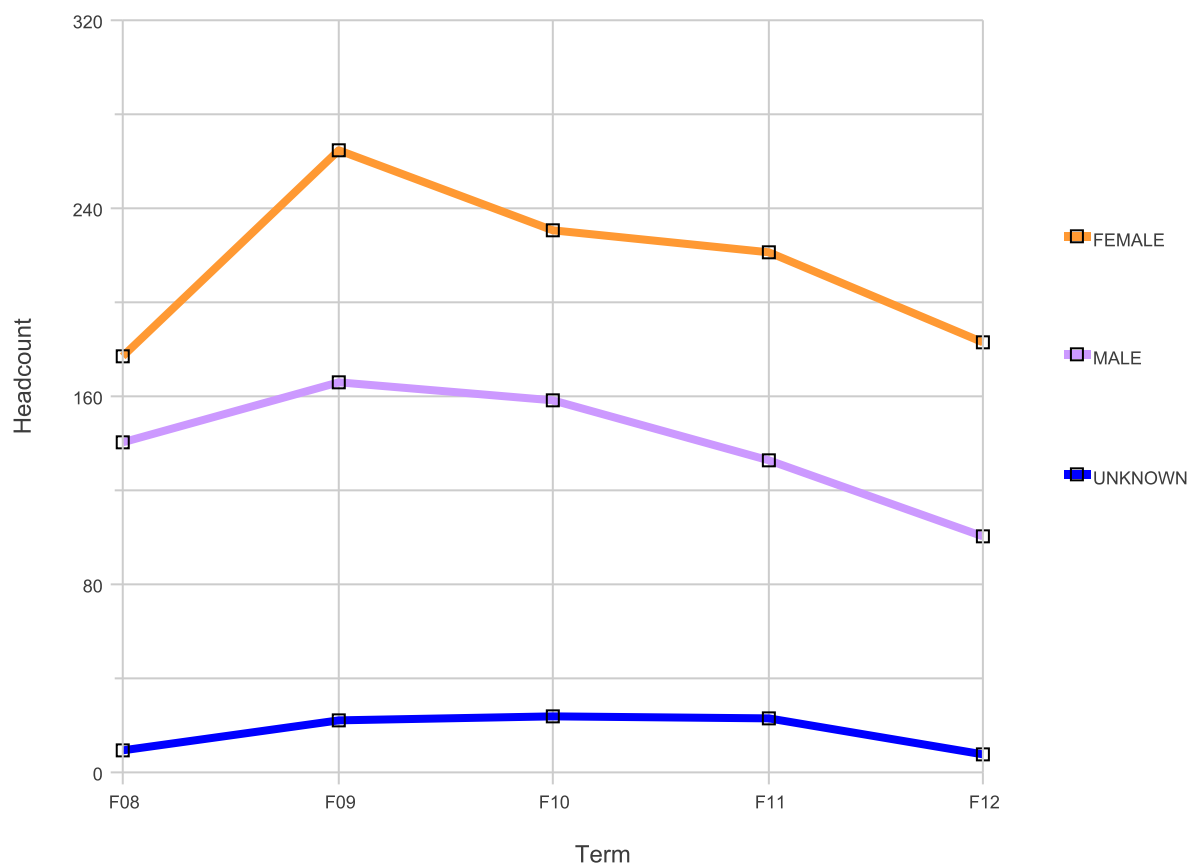


College of Alameda Fall Census MATH Basic Skills Headcount by Gender

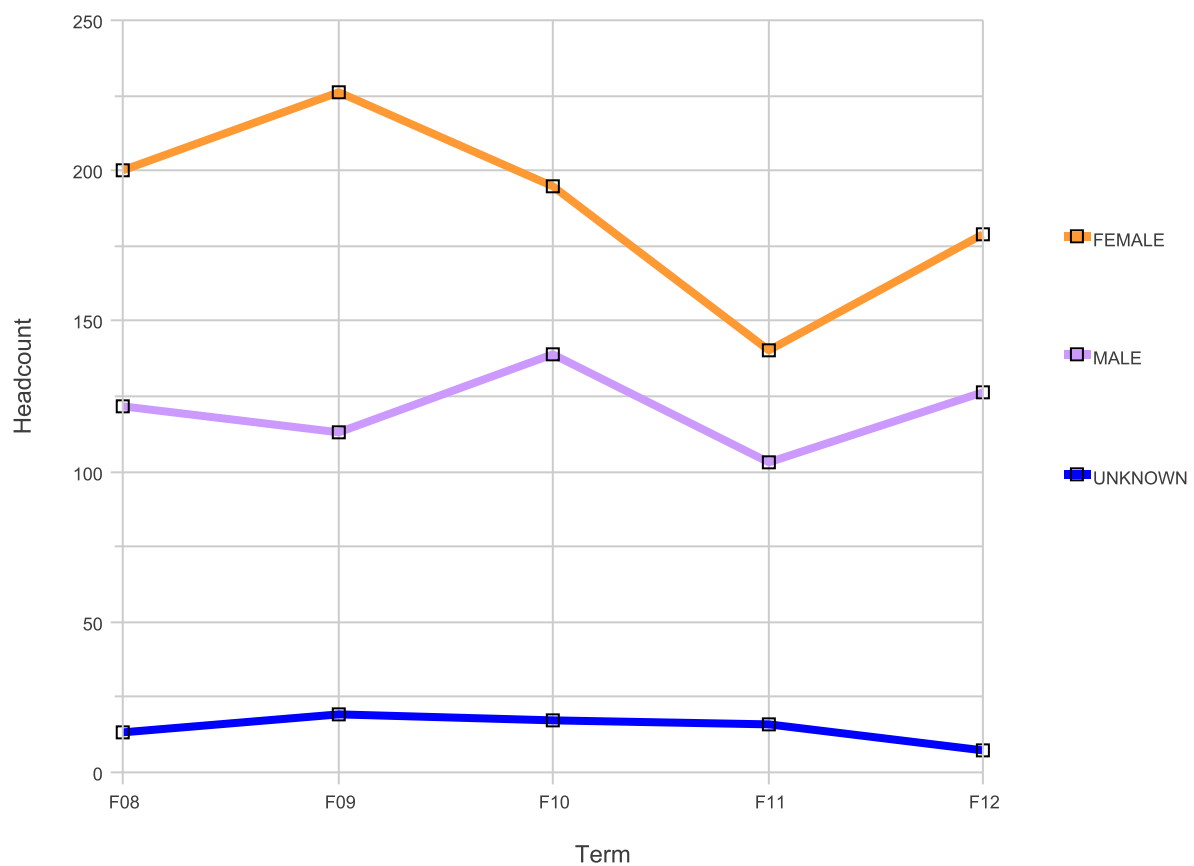


College of Alameda

Gender	Headcount					Percent				
	F08	F09	F10	F11	F12	F08	F09	F10	F11	F12
FEMALE	177	265	231	221	183	54.3%	58.5%	55.9%	58.6%	62.9%
MALE	140	166	158	133	100	42.9%	36.6%	38.3%	35.3%	34.4%
UNKNOWN	9	22	24	23	8	2.8%	4.9%	5.8%	6.1%	2.7%
Grand Total	326	453	413	377	291	100.0%	100.0%	100.0%	100.0%	100.0%

Definition of Basic Skills: CB08 = 'B' and CB04 = 'C' Basic skills credit courses only.

Berkeley City College Fall Census MATH Basic Skills Headcount by Gender

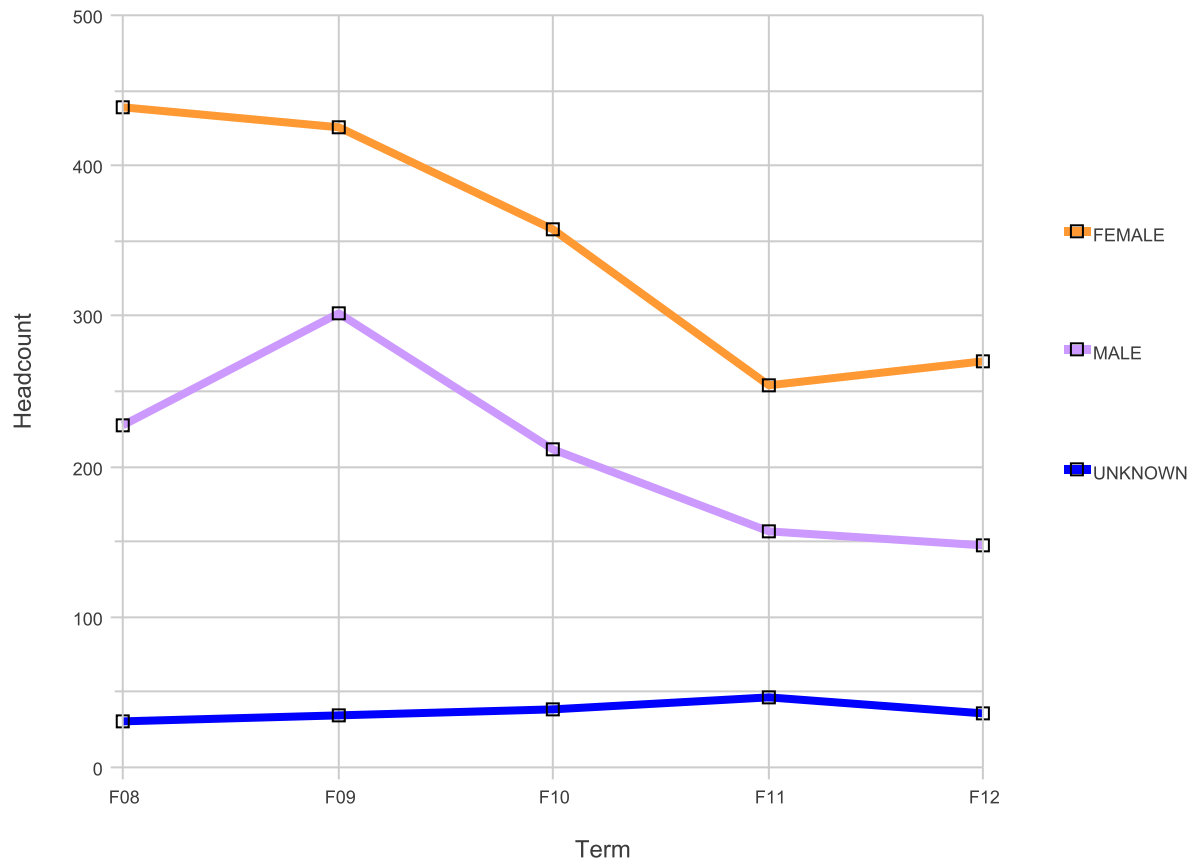


Berkeley City College

Gender	Headcount					Percent				
	F08	F09	F10	F11	F12	F08	F09	F10	F11	F12
FEMALE	200	226	195	140	179	59.7%	63.1%	55.6%	54.1%	57.4%
MALE	122	113	139	103	126	36.4%	31.6%	39.6%	39.8%	40.4%
UNKNOWN	13	19	17	16	7	3.9%	5.3%	4.8%	6.2%	2.2%
Grand Total	335	358	351	259	312	100.0%	100.0%	100.0%	100.0%	100.0%

Definition of Basic Skills: CB08 = 'B' and CB04 = 'C' Basic skills credit courses only.

Laney College Fall Census MATH Basic Skills Headcount by Gender

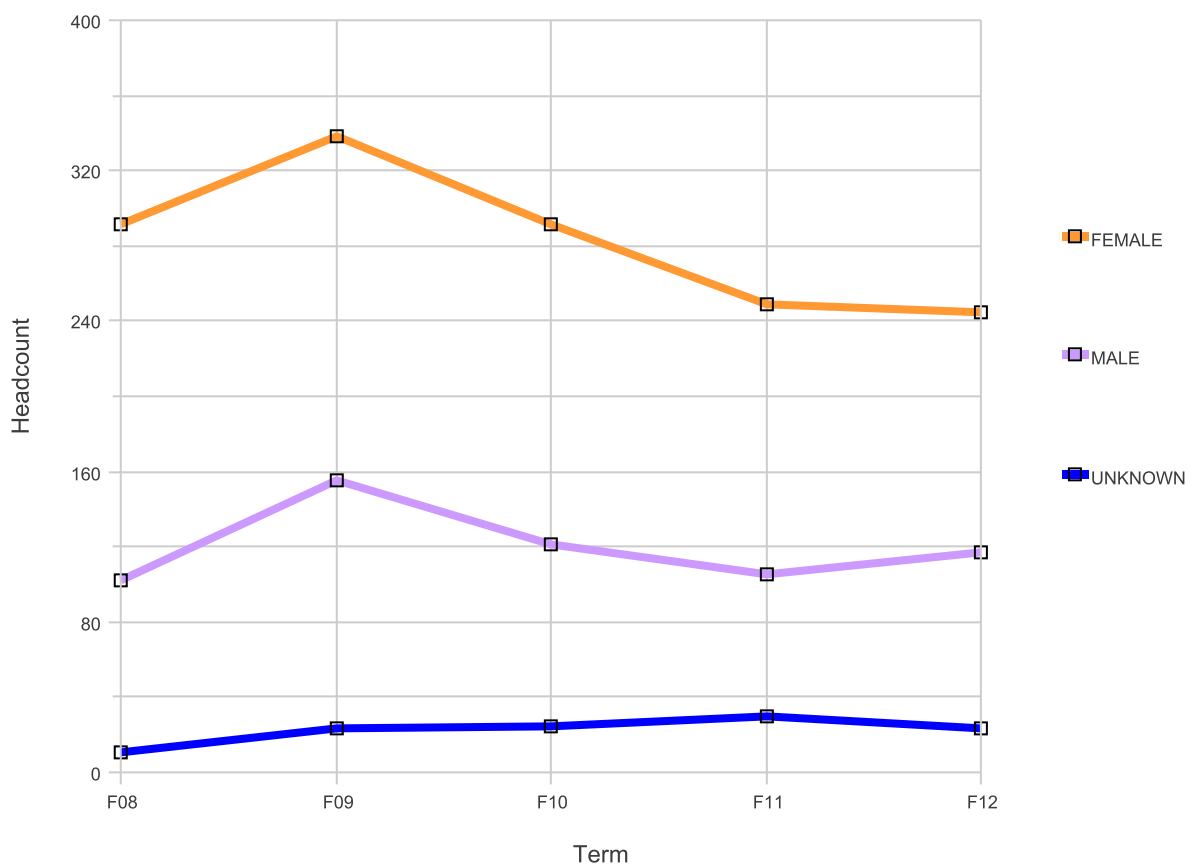


Laney College

Gender	Headcount					Percent				
	F08	F09	F10	F11	F12	F08	F09	F10	F11	F12
FEMALE	439	425	358	254	270	63.1%	55.8%	58.8%	55.5%	59.5%
MALE	227	302	212	157	148	32.6%	39.7%	34.8%	34.3%	32.6%
UNKNOWN	30	34	39	47	36	4.3%	4.5%	6.4%	10.3%	7.9%
Grand Total	696	761	609	458	454	100.0%	100.0%	100.0%	100.0%	100.0%

Definition of Basic Skills: CB08 = 'B' and CB04 = 'C' Basic skills credit courses only.

Merritt College Fall Census MATH Basic Skills Headcount by Gender

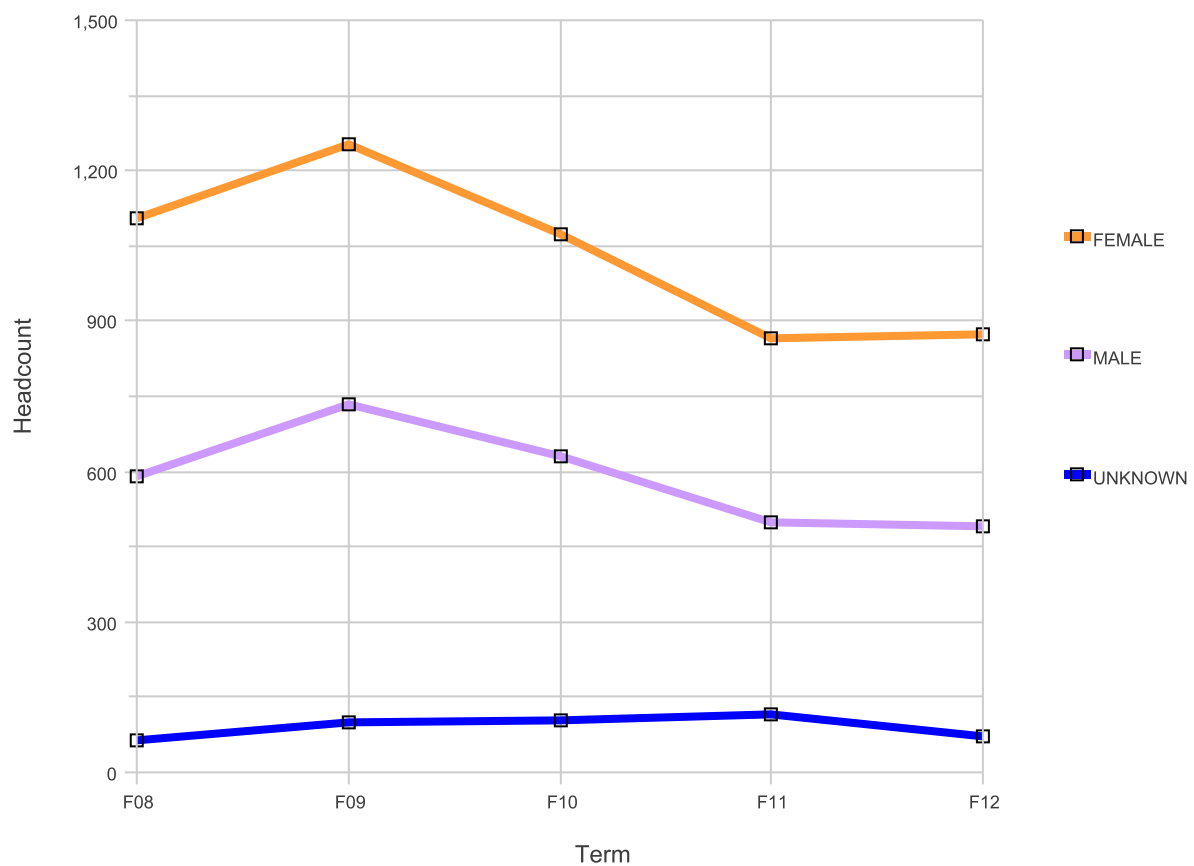


Merritt College

Gender	Headcount					Percent				
	F08	F09	F10	F11	F12	F08	F09	F10	F11	F12
FEMALE	291	338	291	249	245	72.0%	65.5%	66.7%	64.8%	63.6%
MALE	102	155	121	105	117	25.2%	30.0%	27.8%	27.3%	30.4%
UNKNOWN	11	23	24	30	23	2.7%	4.5%	5.5%	7.8%	6.0%
Grand Total	404	516	436	384	385	100.0%	100.0%	100.0%	100.0%	100.0%

Definition of Basic Skills: CB08 = 'B' and CB04 = 'C' Basic skills credit courses only.

Peralta Community College District Fall Census MATH Basic Skills Headcount by Gender



Peralta Community College District

Gender	Headcount					Percent				
	F08	F09	F10	F11	F12	F08	F09	F10	F11	F12
FEMALE	1106	1252	1074	864	875	62.9%	60.0%	59.4%	58.5%	60.8%
MALE	590	736	629	498	491	33.6%	35.3%	34.8%	33.7%	34.1%
UNKNOWN	62	98	104	116	73	3.5%	4.7%	5.8%	7.8%	5.1%
Grand Total	1758	2086	1807	1478	1439	100.0%	100.0%	100.0%	100.0%	100.0%

Definition of Basic Skills: CB08 = 'B' and CB04 = 'C' Basic skills credit courses only.