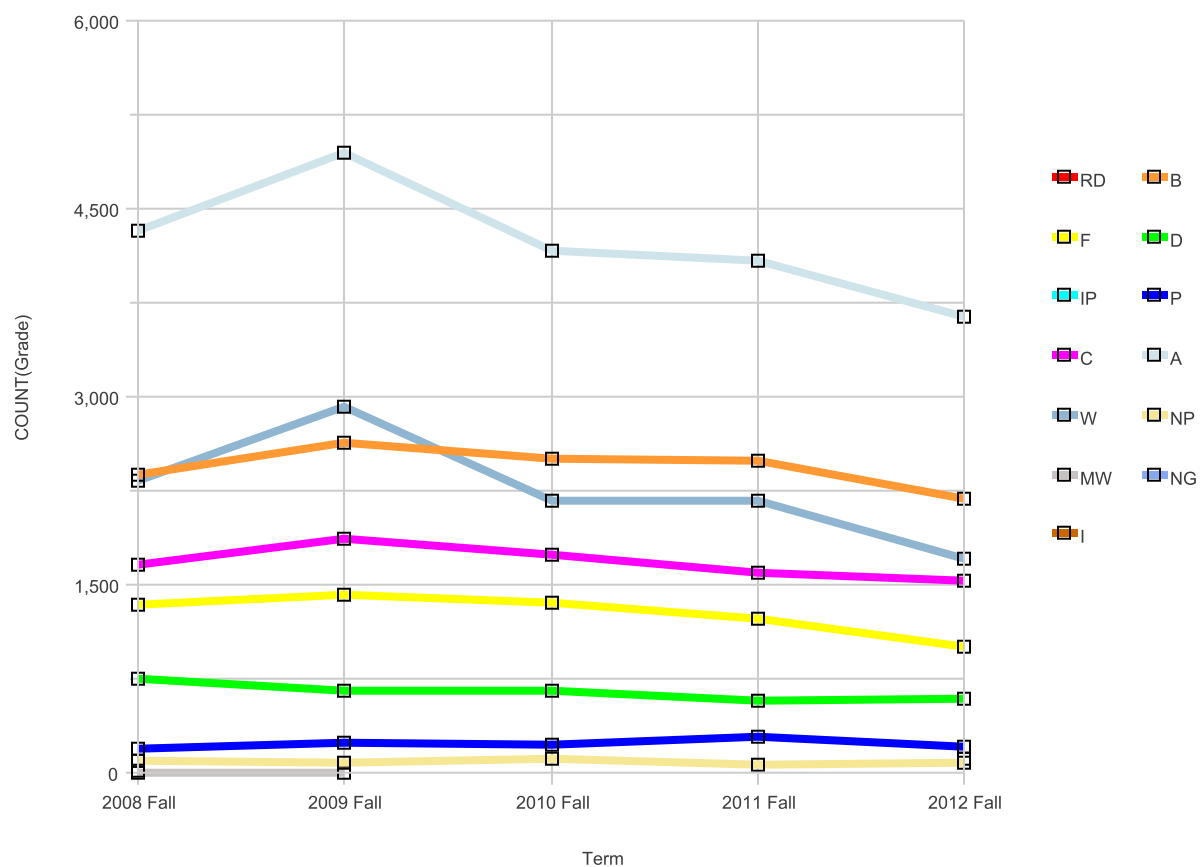


Fall Grade Percentage distribution

Date run: 7/8/2013

Campus College of Alameda

Fall Grade Percentage Distribution

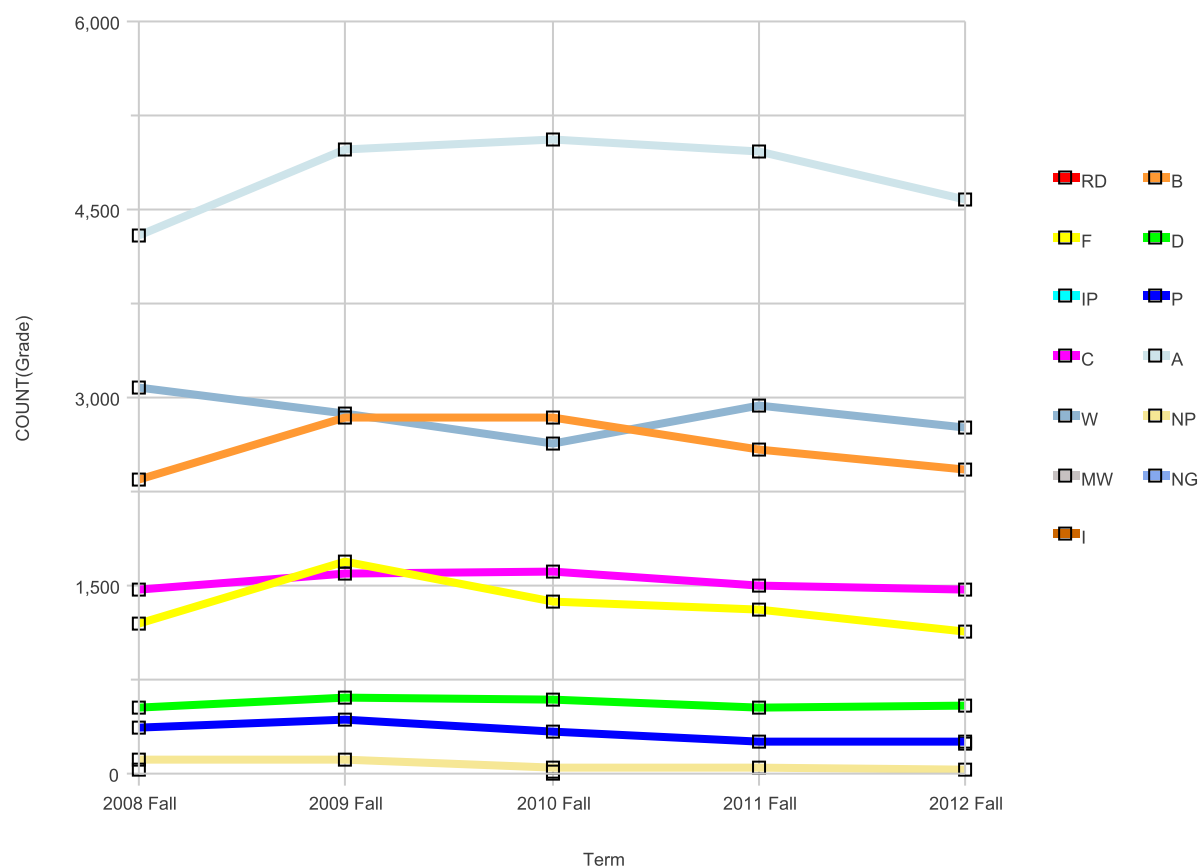


Campus College of Alameda

Term	Grade Distribution													Total	Grade Distribution %													Total
	A	B	C	D	F	I	IP	MW	NG	NP	P	RD	W		A	B	C	D	F	I	IP	MW	NG	NP	P	RD	W	
2008 Fall	4330	2377	1657	746	1339			3		88	184	14	2332	13070	33.1%	18.2%	12.7%	5.7%	10.2%			0.0%		0.7%	1.4%	0.1%	17.8%	100.0%
2009 Fall	4954	2629	1863	659	1421			3		78	247		2923	14777	33.5%	17.8%	12.6%	4.5%	9.6%			0.0%		0.5%	1.7%		19.8%	100.0%
2010 Fall	4169	2498	1734	657	1355					108	222		2170	12913	32.3%	19.3%	13.4%	5.1%	10.5%					0.8%	1.7%		16.8%	100.0%
2011 Fall	4090	2488	1597	576	1235					64	286		2173	12509	32.7%	19.9%	12.8%	4.6%	9.9%					0.5%	2.3%		17.4%	100.0%
2012 Fall	3639	2185	1535	596	1004	107				81	200		1700	11047	32.9%	19.8%	13.9%	5.4%	9.1%	1.0%				0.7%	1.8%		15.4%	100.0%

Campus Berkeley City College

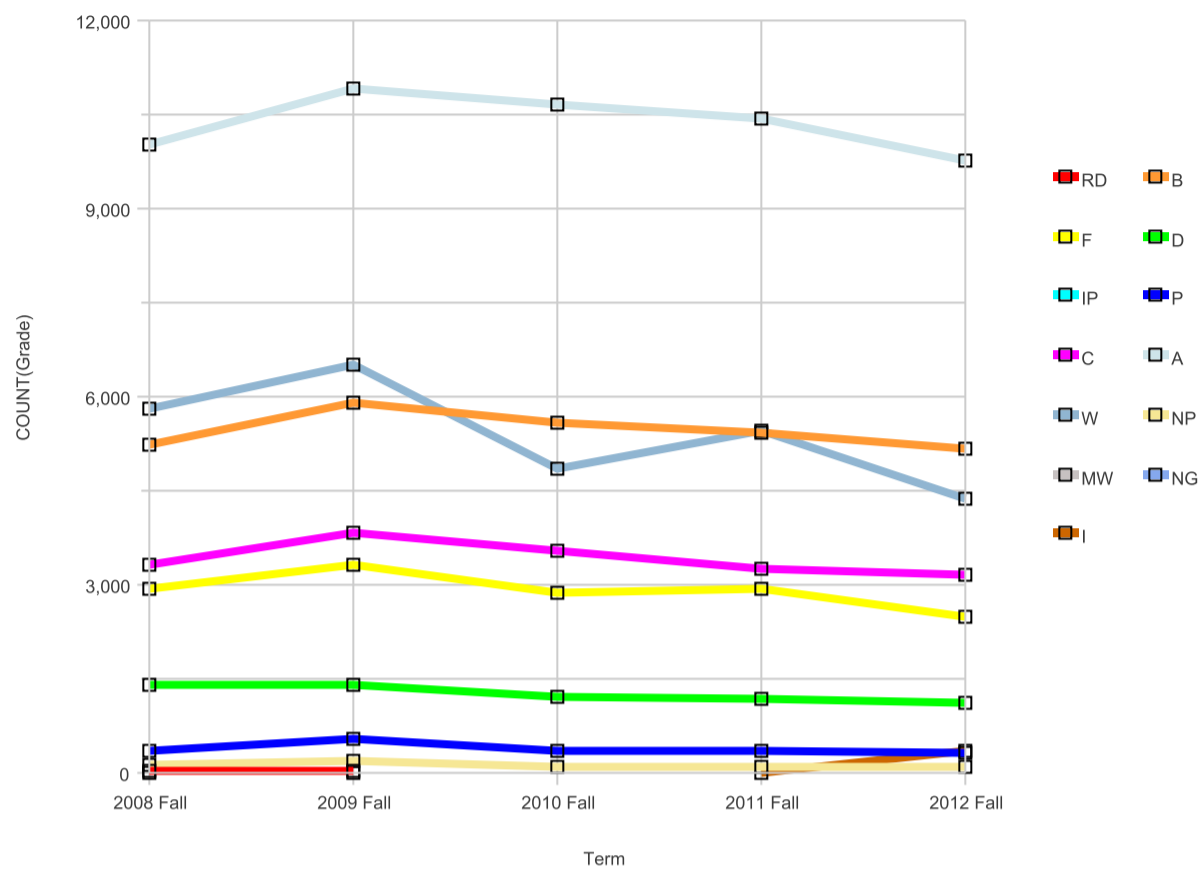
Fall Grade Percentage Distribution



Campus Berkeley City College

Term	Grade Distribution													Total	Grade Distribution %													Total	
	A	B	C	D	F	I	IP	MW	NG	NP	P	RD	W		A	B	C	D	F	I	IP	MW	NG	NP	P	RD	W		
2008 Fall	4286	2341	1468	521	1199						114	372	34	3085	13420	31.9%	17.4%	10.9%	3.9%	8.9%					0.8%	2.8%	0.3%	23.0%	100.0%
2009 Fall	4977	2835	1597	599	1689						115	435		2872	15119	32.9%	18.8%	10.6%	4.0%	11.2%					0.8%	2.9%		19.0%	100.0%
2010 Fall	5060	2842	1606	597	1367		11	4			45	336		2634	14502	34.9%	19.6%	11.1%	4.1%	9.4%		0.1%	0.0%		0.3%	2.3%		18.2%	100.0%
2011 Fall	4955	2583	1507	521	1305						54	255		2942	14122	35.1%	18.3%	10.7%	3.7%	9.2%					0.4%	1.8%		20.8%	100.0%
2012 Fall	4572	2426	1471	538	1131	240					32	251		2756	13417	34.1%	18.1%	11.0%	4.0%	8.4%	1.8%				0.2%	1.9%		20.5%	100.0%

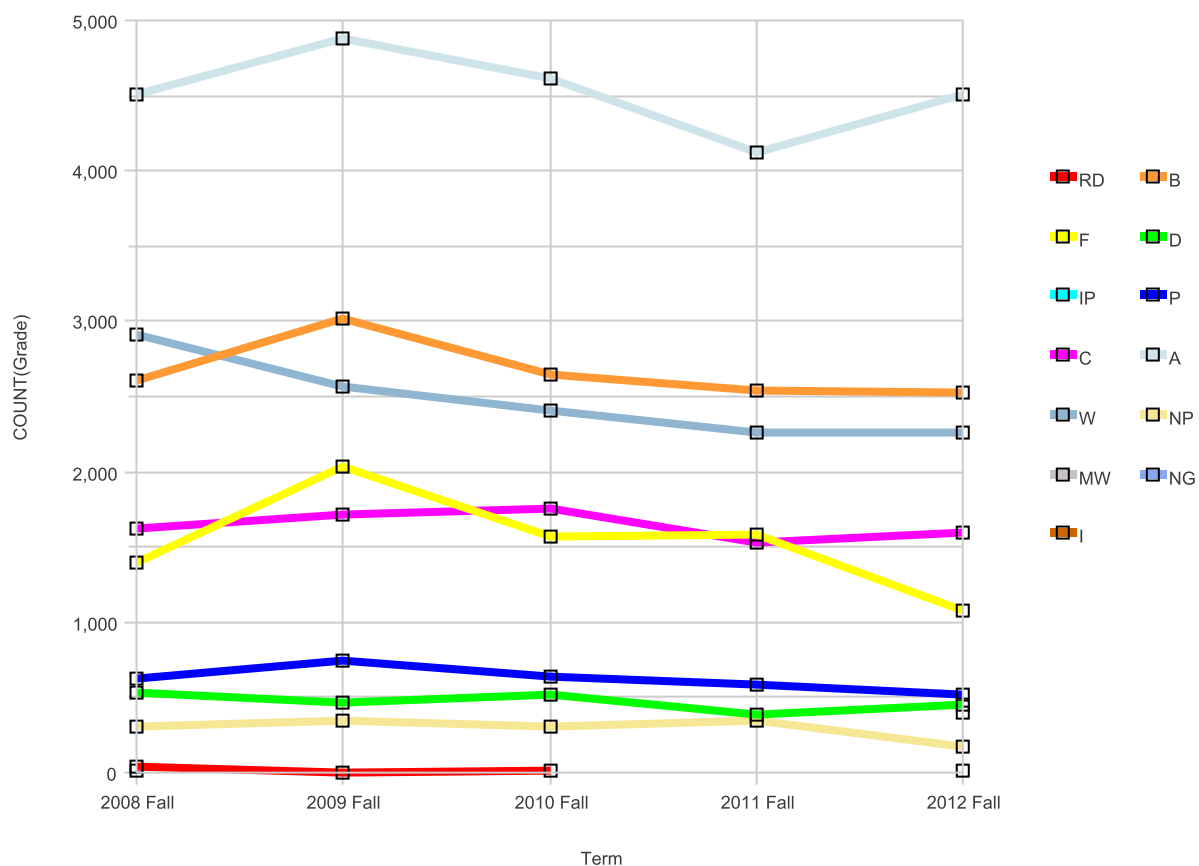
Campus Laney College
Fall Grade Percentage Distribution



Campus Laney College

Term	Grade Distribution													Total	Grade Distribution %													Total
	A	B	C	D	F	I	IP	MW	NG	NP	P	RD	W		A	B	C	D	F	I	IP	MW	NG	NP	P	RD	W	
2008 Fall	10019	5225	3308	1416	2952			1		136	344	38	5795	29234	34.3%	17.9%	11.3%	4.8%	10.1%			0.0%		0.5%	1.2%	0.1%	19.8%	100.0%
2009 Fall	10911	5890	3819	1394	3326				1	194	538	26	6503	32602	33.5%	18.1%	11.7%	4.3%	10.2%			0.0%		0.6%	1.7%	0.1%	19.9%	100.0%
2010 Fall	10657	5595	3533	1225	2876					108	360		4859	29213	36.5%	19.2%	12.1%	4.2%	9.8%					0.4%	1.2%		16.6%	100.0%
2011 Fall	10439	5440	3267	1179	2928	13				98	339		5470	29173	35.8%	18.6%	11.2%	4.0%	10.0%	0.0%				0.3%	1.2%		18.8%	100.0%
2012 Fall	9758	5186	3144	1116	2494	352				108	308		4365	26831	36.4%	19.3%	11.7%	4.2%	9.3%	1.3%				0.4%	1.1%		16.3%	100.0%

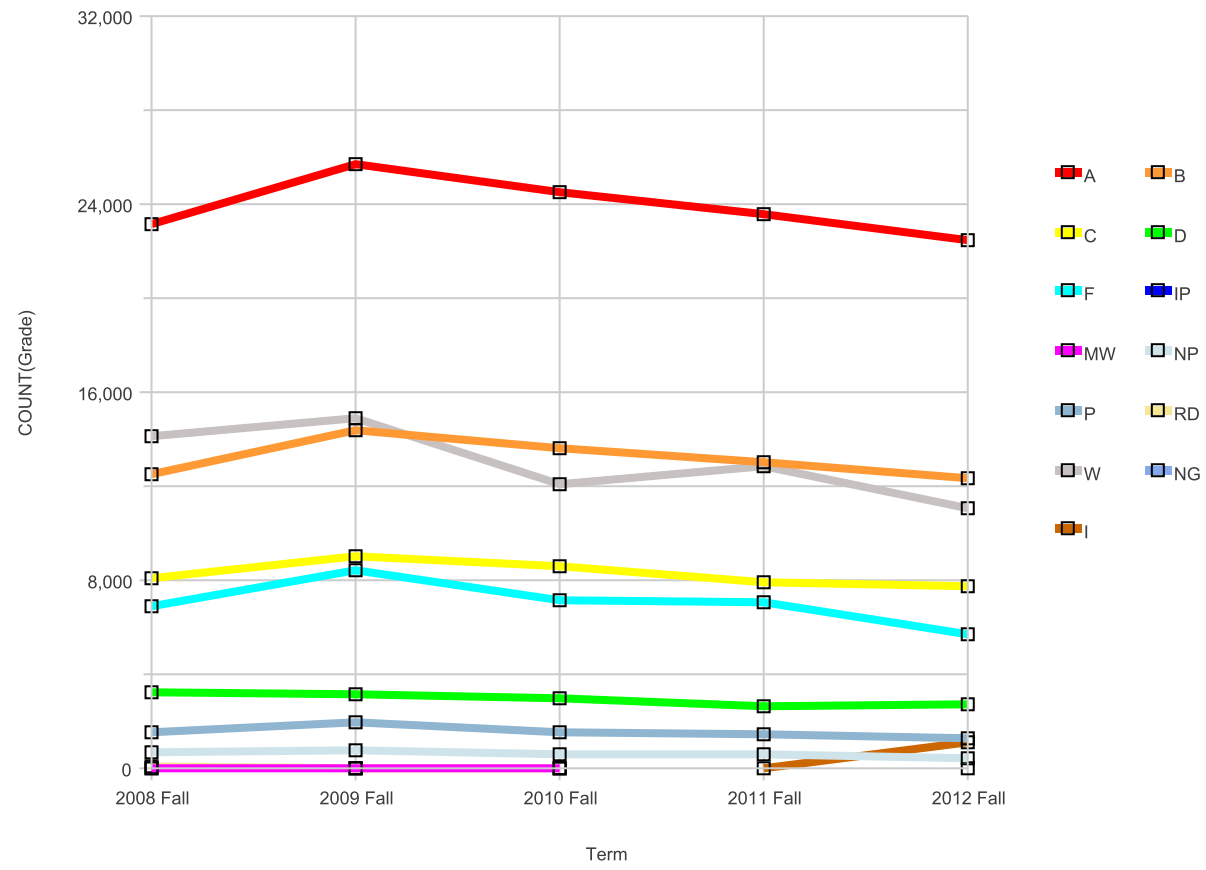
Campus Merritt College
Fall Grade Percentage Distribution



Campus Merritt College

Term	Grade Distribution													Total	Grade Distribution %													Total
	A	B	C	D	F	I	IP	MW	NG	NP	P	RD	W		A	B	C	D	F	I	IP	MW	NG	NP	P	RD	W	
2008 Fall	4502	2601	1627	535	1390		15			312	627	35	2914	14558	30.9%	17.9%	11.2%	3.7%	9.5%		0.1%			2.1%	4.3%	0.2%	20.0%	100.0%
2009 Fall	4876	3014	1715	462	2030					352	743	2	2567	15761	30.9%	19.1%	10.9%	2.9%	12.9%					2.2%	4.7%	0.0%	16.3%	100.0%
2010 Fall	4618	2652	1749	517	1572					304	635	8	2409	14464	31.9%	18.3%	12.1%	3.6%	10.9%					2.1%	4.4%	0.1%	16.7%	100.0%
2011 Fall	4121	2537	1530	382	1585					341	585		2255	13336	30.9%	19.0%	11.5%	2.9%	11.9%					2.6%	4.4%		16.9%	100.0%
2012 Fall	4506	2533	1600	455	1071	396			14	176	520		2260	13531	33.3%	18.7%	11.8%	3.4%	7.9%	2.9%		0.1%	1.3%	3.8%		16.7%	100.0%	

Fall Grade Percentage Distribution



Term	Grade Distribution													Total	Grade Distribution %													Total
	A	B	C	D	F	I	IP	MW	NG	NP	P	RD	W		A	B	C	D	F	I	IP	MW	NG	NP	P	RD	W	
2008 Fall	23137	12544	8060	3218	6880		15	4		650	1527	121	14126	70282	32.9%	17.8%	11.5%	4.6%	9.8%		0.0%	0.0%		0.9%	2.2%	0.2%	20.1%	100.0%
2009 Fall	25718	14368	8994	3114	8466			3	1	739	1963	28	14865	78259	32.9%	18.4%	11.5%	4.0%	10.8%		0.0%	0.0%		0.9%	2.5%	0.0%	19.0%	100.0%
2010 Fall	24504	13587	8622	2996	7170		11	4		565	1553	8	12072	71092	34.5%	19.1%	12.1%	4.2%	10.1%		0.0%	0.0%		0.8%	2.2%	0.0%	17.0%	100.0%
2011 Fall	23605	13048	7901	2658	7053	13				557	1465		12840	69140	34.1%	18.9%	11.4%	3.8%	10.2%	0.0%				0.8%	2.1%		18.6%	100.0%
2012 Fall	22475	12330	7750	2705	5700	1095			14	397	1279		11081	64826	34.7%	19.0%	12.0%	4.2%	8.8%	1.7%			0.0%	0.6%	2.0%		17.1%	100.0%