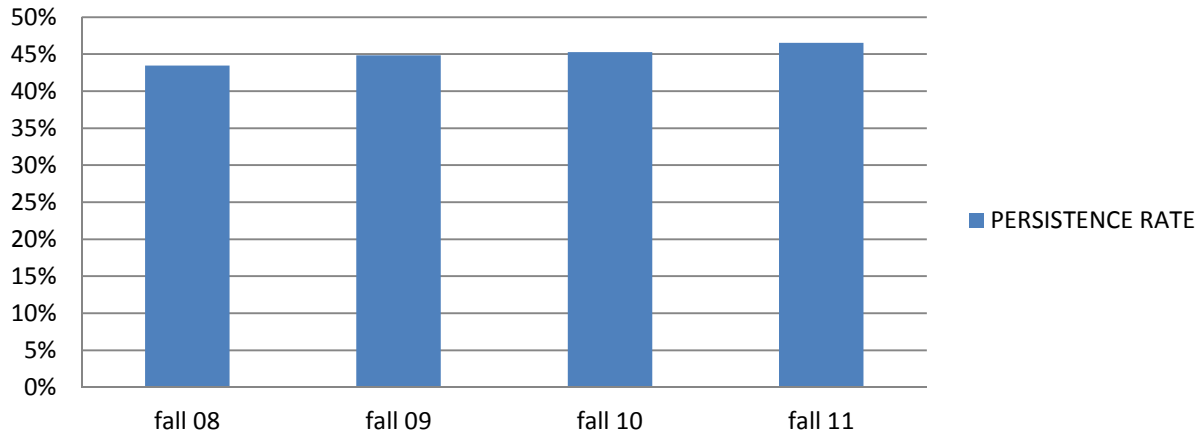


College of Alameda

Fall to Fall Persistence of First-time Student Cohorts



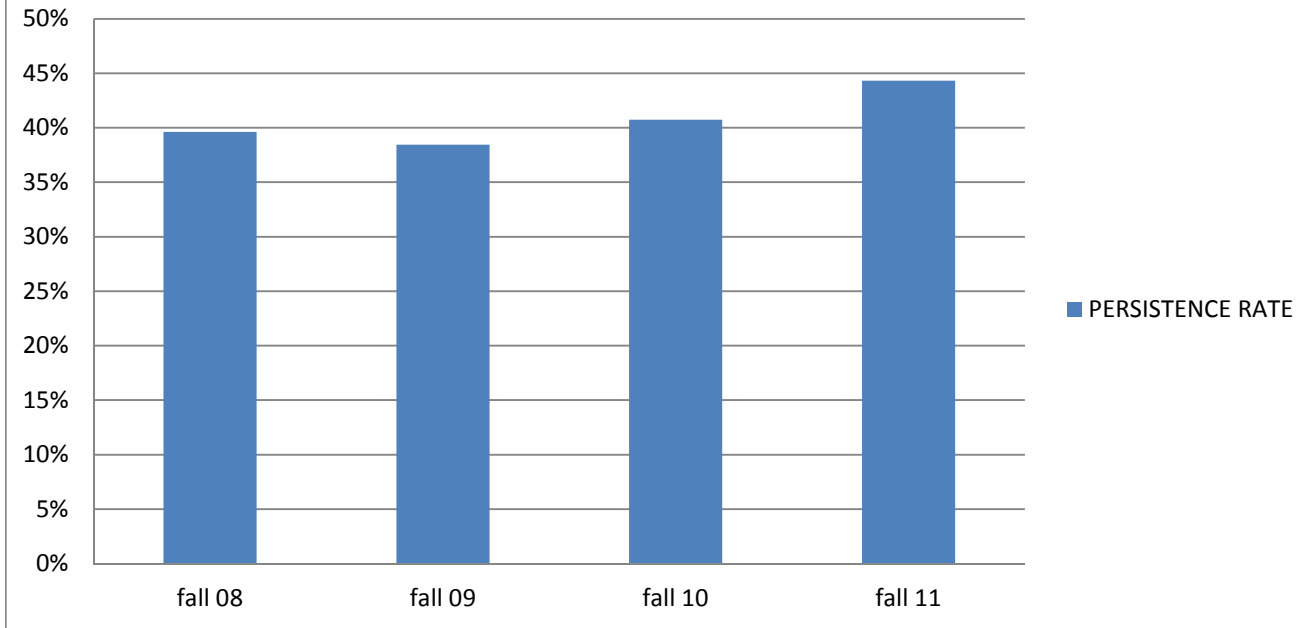
Fall to Fall Persistence of First-time Student Cohorts

COLLEGE	TERM	COHORT	PERSISTENCE	PERSISTENCE RATE
ALAMEDA	fall 08	1687	733	43%
ALAMEDA	fall 09	1990	892	45%
ALAMEDA	fall 10	1687	764	45%
ALAMEDA	fall 11	1444	672	47%

Note: Persistence Rate is defined as the percentage of students enrolled in at least one class at the college at fall census of the cohort year who were then enrolled in at least one class on the following fall opening day in District.

Berkeley City College

Fall to Fall Persistence of First-time Student Cohorts



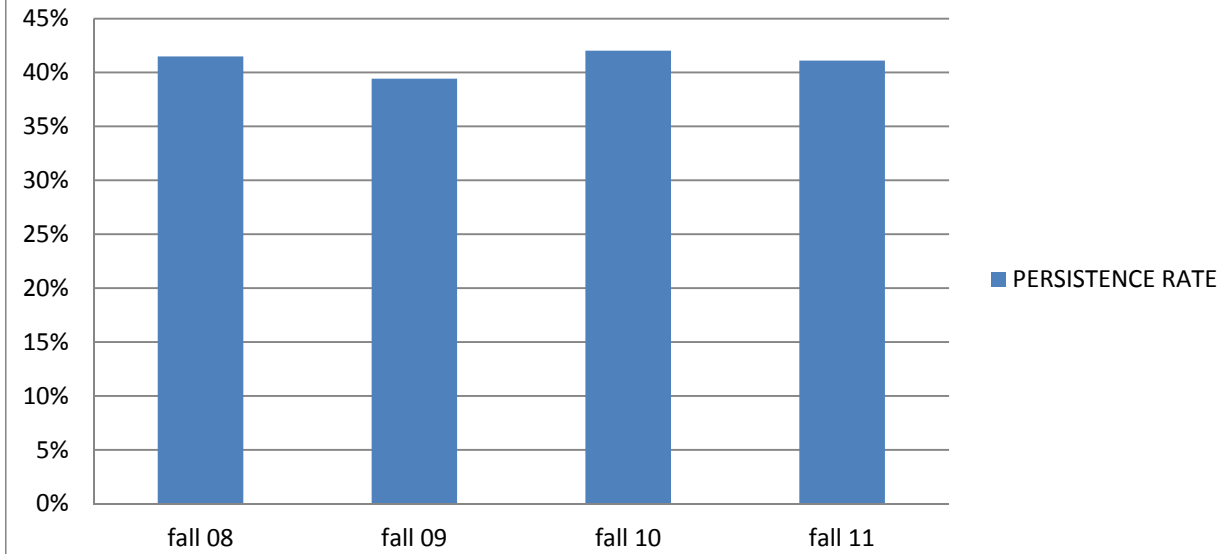
Fall to Fall Persistence of First-time Student Cohorts

COLLEGE	TERM	COHORT	PERSISTENCE	PERSISTENCE RATE
BERKELEY	fall 08	2203	873	40%
BERKELEY	fall 09	2341	900	38%
BERKELEY	fall 10	2076	846	41%
BERKELEY	fall 11	1956	867	44%

Note: Persistence Rate is defined as the percentage of students enrolled in at least one class at the college at fall census of the cohort year who were then enrolled in at least one class on the following fall opening day in District.

Laney College

Fall to Fall Persistence of First-time Student Cohorts

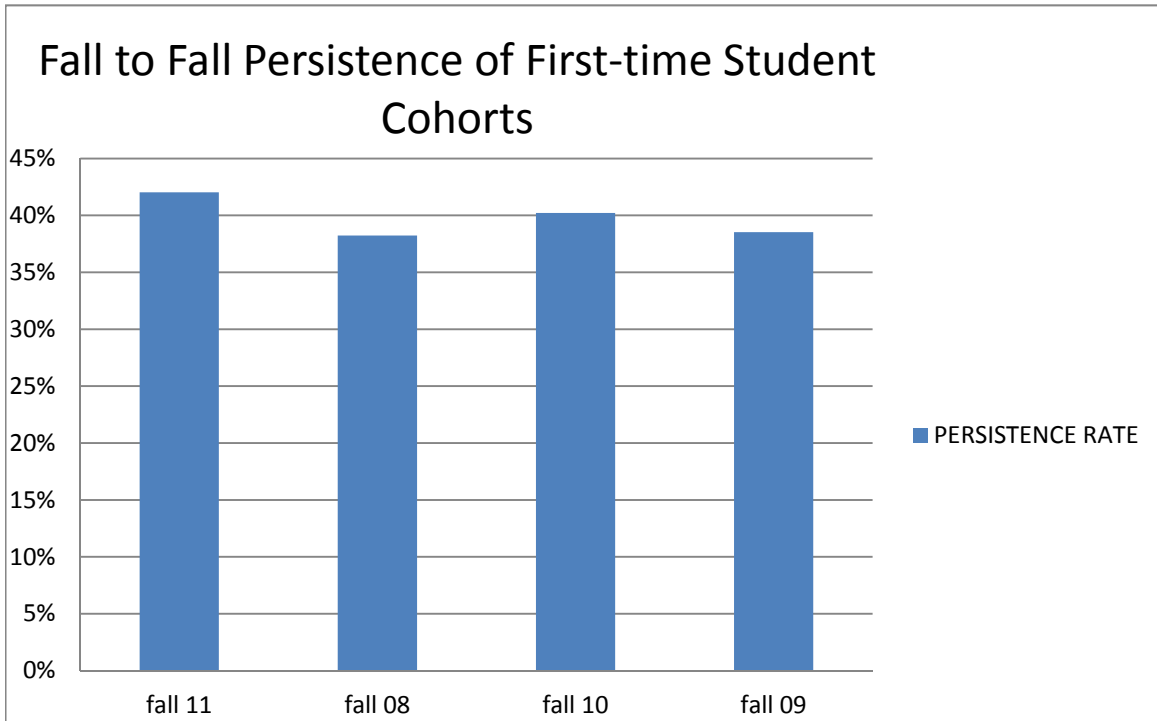


Fall to Fall Persistence of First-time Student Cohorts

COLLEGE	TERM	COHORT	PERSISTENCE	PERSISTENCE RATE
LANEY	fall 08	3389	1406	41%
LANEY	fall 09	3848	1517	39%
LANEY	fall 10	3243	1363	42%
LANEY	fall 11	2807	1154	41%

Note: Persistence Rate is defined as the percentage of students enrolled in at least one class at the college at fall census of the cohort year who were then enrolled in at least one class on the following fall opening day in District.

Merritt College

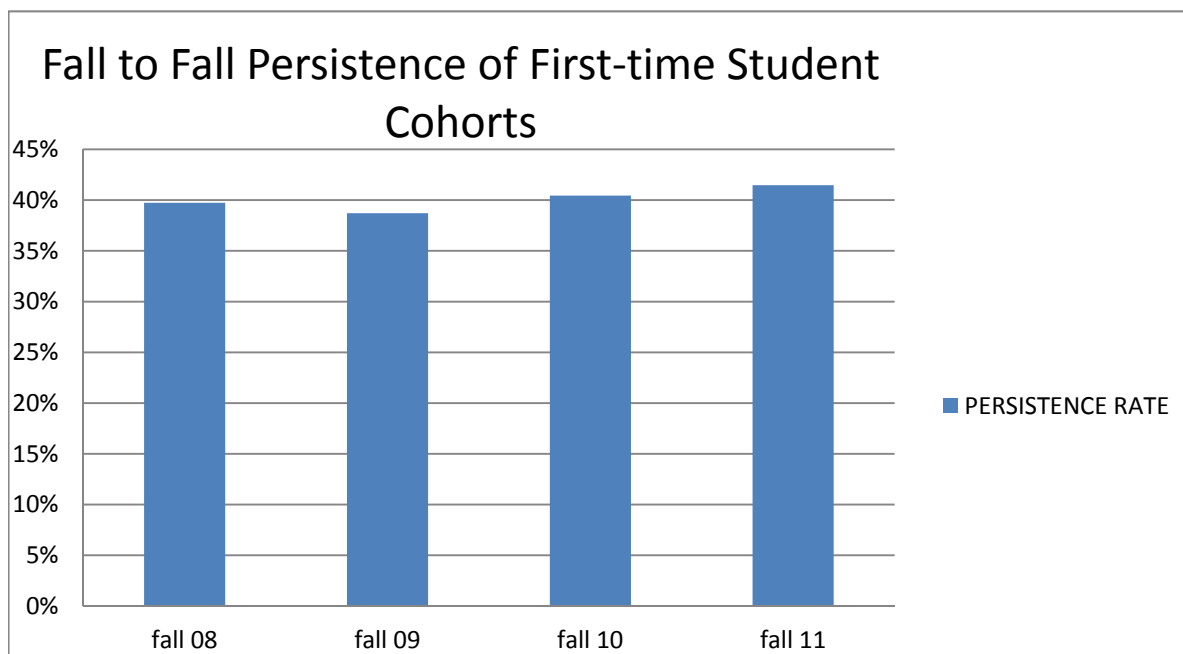


Fall to Fall Persistence of First-time Student Cohorts

COLLEGE	TERM	COHORT	PERSISTENCE	PERSISTENCE RATE
MERRITT	fall 11	1342	564	42%
MERRITT	fall 08	1844	705	38%
MERRITT	fall 10	1823	733	40%
MERRITT	fall 09	2079	801	39%

Note: Persistence Rate is defined as the percentage of students enrolled in at least one class at the college at fall census of the cohort year who were then enrolled in at least one class on the following fall opening day in District.

Peralta Community College District



Fall to Fall Persistence of First-time Student Cohorts

COLLEGE	TERM	COHORT	PERSISTENCE	PERSISTENCE RATE
PCCD	fall 08	8024	3189	40%
PCCD	fall 09	8732	3381	39%
PCCD	fall 10	7332	2966	40%
PCCD	fall 11	6235	2586	41%

Note: Persistence Rate is defined as the percentage of students enrolled in at least one class at the college at fall census of the cohort year who were then enrolled in at least one class on the following fall opening day in District.