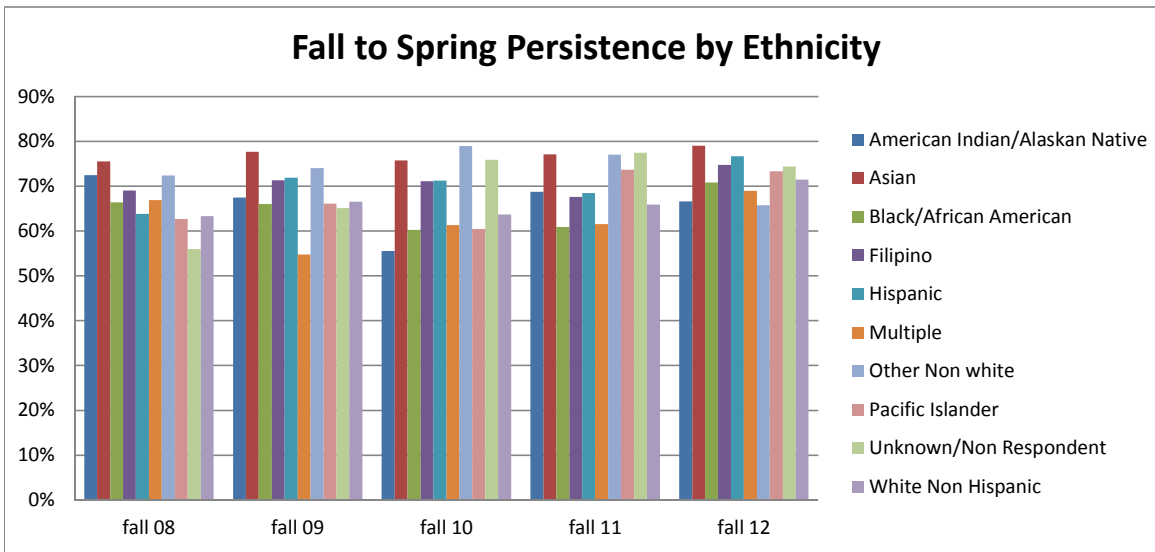


## College of Alameda

### Fall to Spring Persistence of All Fall Students by Ethnicity



#### Percentage of the Cohort Persisting to the Following Spring Opening Day by Ethnicity within district

Cohort	American Indian/Alaskan Native	Asian	Black/African American	Filipino	Hispanic	Multiple	Other Non white	Pacific Islander	Unknown/Non Respondent	White Non Hispanic	Total
fall 08	73%	76%	66%	69%	64%	67%	72%	63%	56%	63%	68%
fall 09	68%	78%	66%	71%	72%	55%	74%	66%	65%	67%	70%
fall 10	56%	76%	60%	71%	71%	61%	79%	60%	76%	64%	69%
fall 11	69%	77%	61%	68%	69%	62%	77%	74%	78%	66%	69%
fall 12	67%	79%	71%	75%	77%	69%	66%	73%	74%	72%	74%

#### Number of Fall Students Enrolled at Census by Ethnicity at College of Alameda

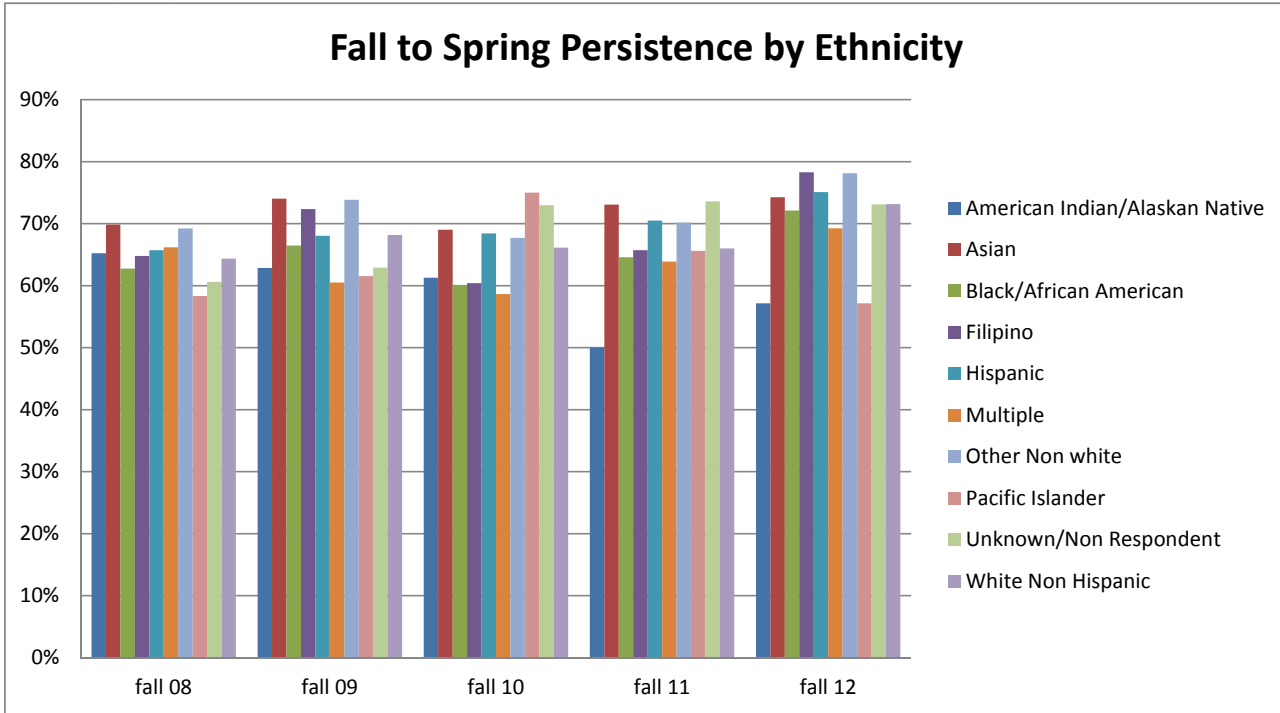
Cohort	American Indian/Alaskan Native	Asian	Black/African American	Filipino	Hispanic	Multiple	Other Non white	Pacific Islander	Unknown/Non Respondent	White Non Hispanic	Grand Total
fall 08	40	2173	1655	262	821	127	134	67	586	957	6822
fall 09	40	2177	1799	258	843	157	131	59	1529	994	7987
fall 10	27	2013	1642	260	850	370	76	43	951	1005	7237
fall 11	16	1876	1634	250	813	481	61	38	756	998	6923
fall 12	18	1759	1396	210	802	603	38	30	524	920	6300

#### Number of the Cohort Persisting to the Following Spring Opening Day by Ethnicity within the district

Cohort	American Indian/Alaskan Native	Asian	Black/African American	Filipino	Hispanic	Multiple	Other Non white	Pacific Islander	Unknown/Non Respondent	White Non Hispanic	Grand Total
fall 08	29	1642	1099	181	524	85	97	42	328	606	4633
fall 09	27	1692	1189	184	606	86	97	39	996	662	5578
fall 10	15	1525	990	185	606	227	60	26	722	640	4996
fall 11	11	1447	995	169	557	296	47	28	586	658	4794
fall 12	12	1391	989	157	615	416	25	22	390	658	4675

# Berkeley City College

## Fall to Spring Persistence of All Fall Students by Ethnicity



### Percentage of the Cohort Persisting to the Following Spring Opening Day by Ethnicity within district

Cohort	American Indian/Alaskan	Asian	Black/African American	Filipino	Hispanic	Multiple	Other Non white	Pacific Islander	Unknown/Non Respondent	White Non Hispanic	Total
fall 08	65%	70%	63%	65%	66%	66%	69%	58%	61%	64%	65%
fall 09	63%	74%	66%	72%	68%	61%	74%	62%	63%	68%	67%
fall 10	61%	69%	60%	60%	68%	59%	68%	75%	73%	66%	66%
fall 11	50%	73%	65%	66%	70%	64%	70%	66%	74%	66%	68%
fall 12	57%	74%	72%	78%	75%	69%	78%	57%	73%	73%	73%

### Number of Fall Students Enrolled at Census by Ethnicity at Berkeley City College

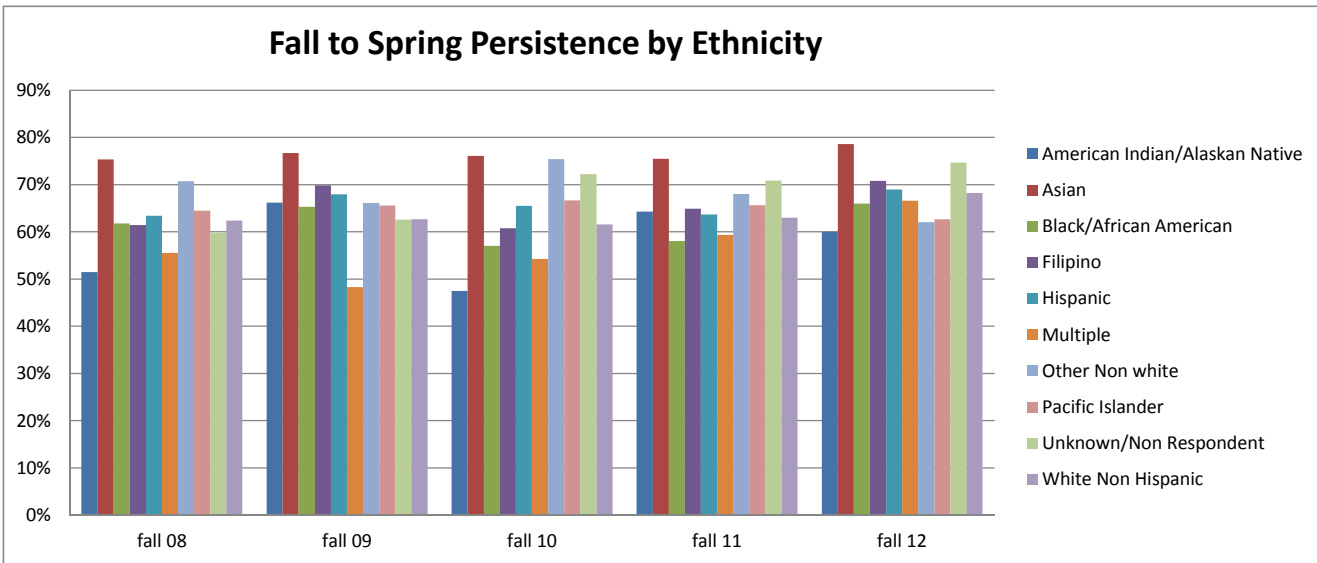
Cohort	American Indian/Alaskan Native	Asian	Black/African American	Filipino	Hispanic	Multiple	Other Non white	Pacific Islander	Unknown/Non Respondent	White Non Hispanic	Grand Total
fall 08	46	1015	1318	125	875	139	143	36	863	1893	6453
fall 09	35	951	1408	123	936	195	130	26	2125	1722	7651
fall 10	31	1101	1515	149	925	537	96	36	1158	1919	7467
fall 11	32	1058	1378	140	932	695	57	32	803	1841	6968
fall 12	21	991	1234	129	907	797	32	28	543	1639	6321

### Number of the Cohort Persisting to the Following Spring Opening Day by Ethnicity within the district

Cohort	American Indian/Alaskan Native	Asian	Black/African American	Filipino	Hispanic	Multiple	Other Non white	Pacific Islander	Unknown/Non Respondent	White Non Hispanic	Grand Total
fall 08	30	709	827	81	575	92	99	21	523	1218	4175
fall 09	22	704	936	89	637	118	96	16	1337	1174	5129
fall 10	19	760	911	90	633	315	65	27	845	1269	4934
fall 11	16	773	890	92	657	444	40	21	591	1215	4739
fall 12	12	736	890	101	681	552	25	16	397	1199	4609

Laney College

Fall to Spring Persistence of All Fall Students by Ethnicity



Percentage of the Cohort Persisting to the Following Spring Opening Day by Ethnicity within district

Cohort	American Indian/Alaskan Native		Black/African American			Multiple	Other Non white	Pacific Islander	Unknown/Non Respondent	White Non Hispanic	Total
	Native	Asian	American	Filipino	Hispanic						
fall 08	52%	75%	62%	61%	63%	56%	71%	64%	60%	62%	66%
fall 09	66%	77%	65%	70%	68%	48%	66%	66%	63%	63%	67%
fall 10	47%	76%	57%	61%	66%	54%	75%	67%	72%	62%	66%
fall 11	64%	75%	58%	65%	64%	59%	68%	66%	71%	63%	66%
fall 12	60%	79%	66%	71%	69%	67%	62%	63%	75%	68%	71%

Number of Fall Students Enrolled at Census by Ethnicity at Laney College

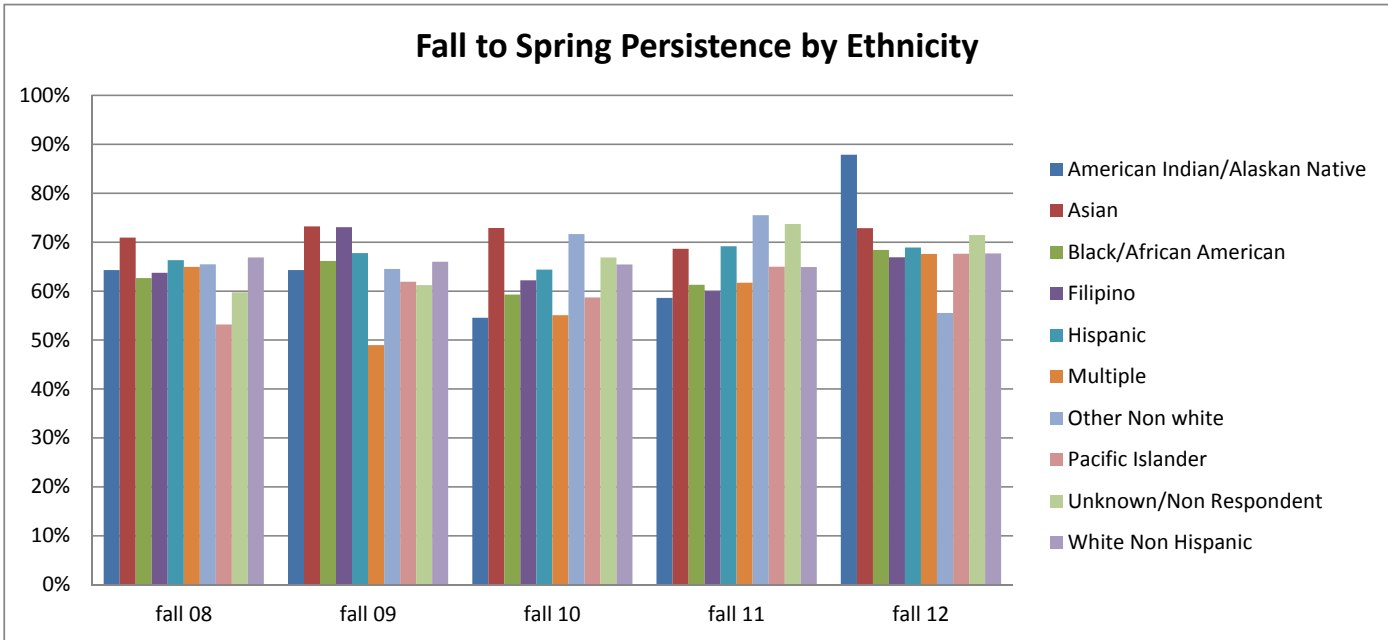
Cohort	American Indian/Alaskan Native		Black/African American			Multiple	Other Non white	Pacific Islander	Unknown/Non Respondent	White Non Hispanic	Grand Total
	Native	Asian	American	Filipino	Hispanic						
fall 08	66	4034	3732	275	1692	216	212	107	1351	2014	13699
fall 09	68	3933	3952	259	1528	294	198	93	3204	1827	15356
fall 10	59	3560	3742	265	1532	744	122	90	1901	2023	14038
fall 11	42	3435	3682	228	1574	981	100	67	1470	1964	13543
fall 12	40	3328	3129	240	1560	1155	58	75	998	2012	12595

Number of the Cohort Persisting to the Following Spring Opening Day by Ethnicity within the district

Cohort	American Indian/Alaskan Native		Black/African American			Multiple	Other Non white	Pacific Islander	Unknown/Non Respondent	White Non Hispanic	Grand Total
	Native	Asian	American	Filipino	Hispanic						
fall 08	34	3040	2307	169	1073	120	150	69	807	1257	9026
fall 09	45	3016	2582	181	1039	142	131	61	2005	1145	10347
fall 10	28	2708	2134	161	1004	404	92	60	1373	1246	9210
fall 11	27	2593	2137	148	1003	582	68	44	1042	1238	8882
fall 12	24	2617	2066	170	1076	769	36	47	745	1373	8923

# Merritt College

## Fall to Spring Persistence of All Fall Students by Ethnicity



### Percentage of the Cohort Persisting to the Following Spring Opening Day by Ethnicity within district

Cohort	American Indian/Alaskan Native	Asian	Black/African American	Filipino	Hispanic	Multiple	Other Non white	Pacific Islander	Unknown/Non Respondent	White Non Hispanic	Total
fall 08	64%	71%	63%	64%	66%	65%	65%	53%	60%	67%	65%
fall 09	64%	73%	66%	73%	68%	49%	65%	62%	61%	66%	66%
fall 10	55%	73%	59%	62%	64%	55%	72%	59%	67%	65%	64%
fall 11	59%	69%	61%	60%	69%	62%	76%	65%	74%	65%	66%
fall 12	88%	73%	68%	67%	69%	68%	56%	68%	71%	68%	69%

### Number of Fall Students Enrolled at Census by Ethnicity at Merritt College

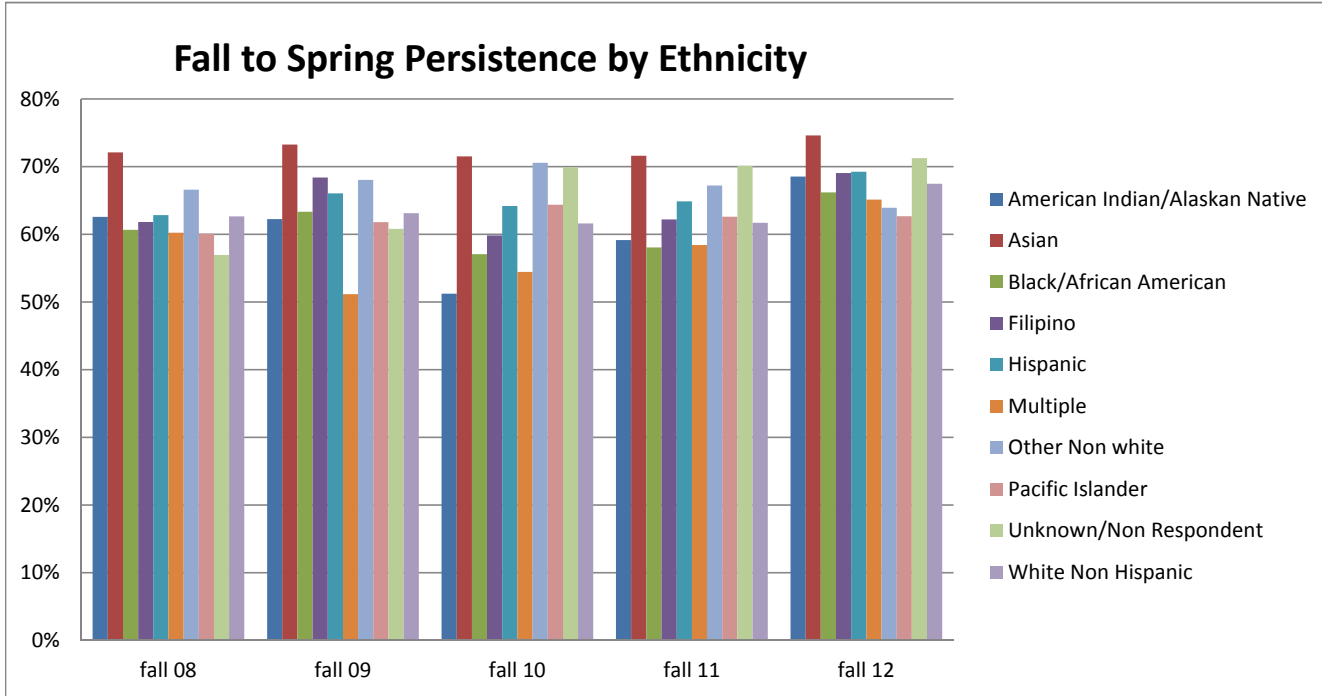
Cohort	American Indian/Alaskan Native	Asian	Black/African American	Filipino	Hispanic	Multiple	Other Non white	Pacific Islander	Unknown/Non Respondent	White Non Hispanic	Grand Total
fall 08	56	1128	2395	193	1259	137	113	47	733	1540	7601
fall 09	42	1120	2318	167	1135	194	110	42	1787	1409	8324
fall 10	33	1081	2258	172	1149	394	60	46	1054	1484	7731
fall 11	29	979	2122	155	1051	457	49	40	772	1252	6906
fall 12	33	977	2172	136	1103	673	36	34	522	1304	6990

### Number of the Cohort Persisting to the Following Spring Opening Day by Ethnicity within the district

Cohort	American Indian/Alaskan Native	Asian	Black/African American	Filipino	Hispanic	Multiple	Other Non white	Pacific Islander	Unknown/Non Respondent	White Non Hispanic	Grand Total
fall 08	36	800	1501	123	835	89	74	25	438	1030	4951
fall 09	27	820	1534	122	769	95	71	26	1094	930	5488
fall 10	18	788	1339	107	740	217	43	27	705	971	4955
fall 11	17	672	1301	93	727	282	37	26	569	813	4537
fall 12	29	712	1486	91	760	455	20	23	373	883	4832

# Peralta Community College District

## Fall to Spring Persistence of All Fall Students by Ethnicity



### Percentage of the Cohort Persisting to the Following Spring Opening Day by Ethnicity within district

Cohort	American Indian/Alaskan	Asian	Black/African American	Filipino	Hispanic	Multiple	Other Non white	Pacific Islander	Unknown/Non Respondent	White Non Hispanic	Total
fall 08	63%	72%	61%	62%	63%	60%	67%	60%	57%	63%	64%
fall 09	62%	73%	63%	68%	66%	51%	68%	62%	61%	63%	65%
fall 10	51%	72%	57%	60%	64%	54%	71%	64%	70%	62%	64%
fall 11	59%	72%	58%	62%	65%	58%	67%	63%	70%	62%	64%
fall 12	69%	75%	66%	69%	69%	65%	64%	63%	71%	67%	69%

### Number of Fall Students Enrolled at Census by Ethnicity at PCCD

Cohort	American Indian/Alaskan Native	Asian	Black/African American	Filipino	Hispanic	Multiple	Other Non white	Pacific Islander	Unknown/Non Respondent	White Non Hispanic	Grand Total
fall 08	171	6631	7546	702	3929	498	467	218	3017	5460	28639
fall 09	151	6248	7621	639	3641	692	438	178	7278	4961	31847
fall 10	123	5773	7356	645	3576	1657	265	174	4006	5242	28817
fall 11	93	5475	7074	606	3494	2082	186	139	2909	4900	26958
fall 12	89	5188	6334	556	3467	2524	122	142	1951	4686	25059

### Number of the Cohort Persisting to the Following Spring Opening Day by Ethnicity within the district

Cohort	American Indian/Alaskan Native	Asian	Black/African American	Filipino	Hispanic	Multiple	Other Non white	Pacific Islander	Unknown/Non Respondent	White Non Hispanic	Grand Total
fall 08	107	4781	4578	434	2469	300	311	131	1718	3420	18249
fall 09	94	4577	4827	437	2405	354	298	110	4426	3131	20659
fall 10	63	4129	4198	386	2295	902	187	112	2800	3230	18302
fall 11	55	3920	4107	377	2267	1216	125	87	2040	3023	17217
fall 12	61	3871	4193	384	2401	1644	78	89	1390	3162	17273