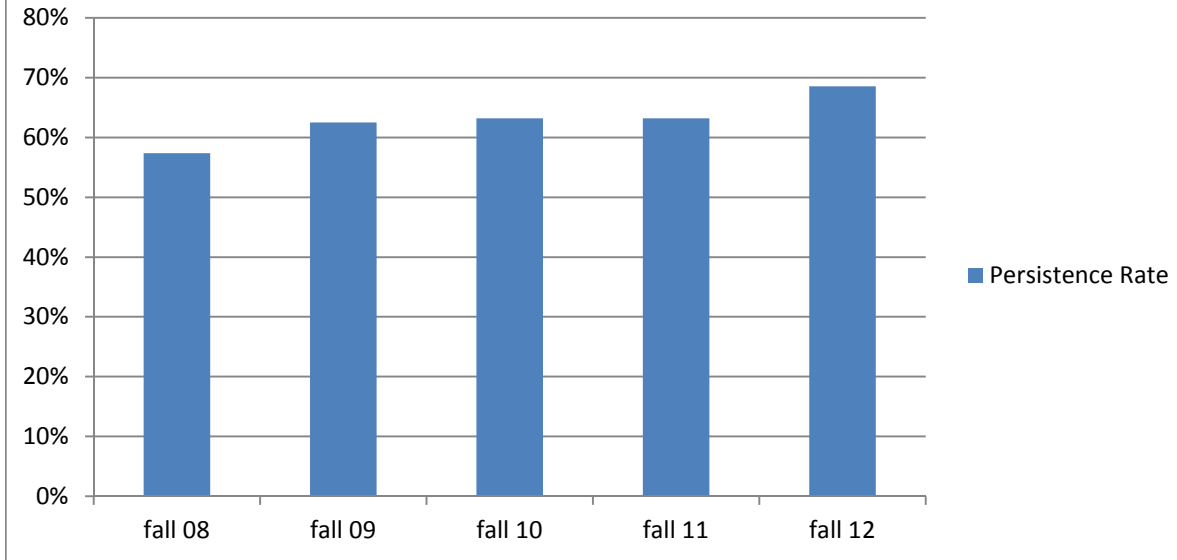


College of Alameda

Fall to Spring Persistence of First-time Student Cohorts



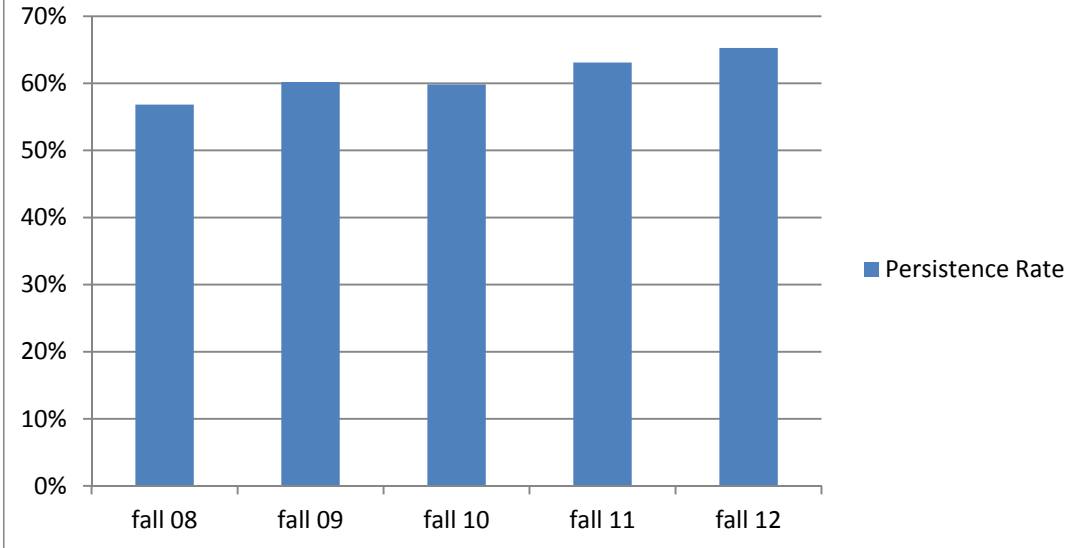
Fall to Spring Persistence of First-time Student Cohorts

College	Term	Cohort	Persistence	Persistence Rate
ALAMEDA	fall 08	1687	968	57%
ALAMEDA	fall 09	1990	1244	63%
ALAMEDA	fall 10	1688	1067	63%
ALAMEDA	fall 11	1445	913	63%
ALAMEDA	fall 12	1353	927	69%

Note: Persistence Rate is defined as the percentage of students enrolled in at least one class at the college at fall census of the cohort year who were then enrolled in at least one class on the following spring opening day in District.

Berkeley City College

Fall to Spring Persistence of First-time Student Cohorts



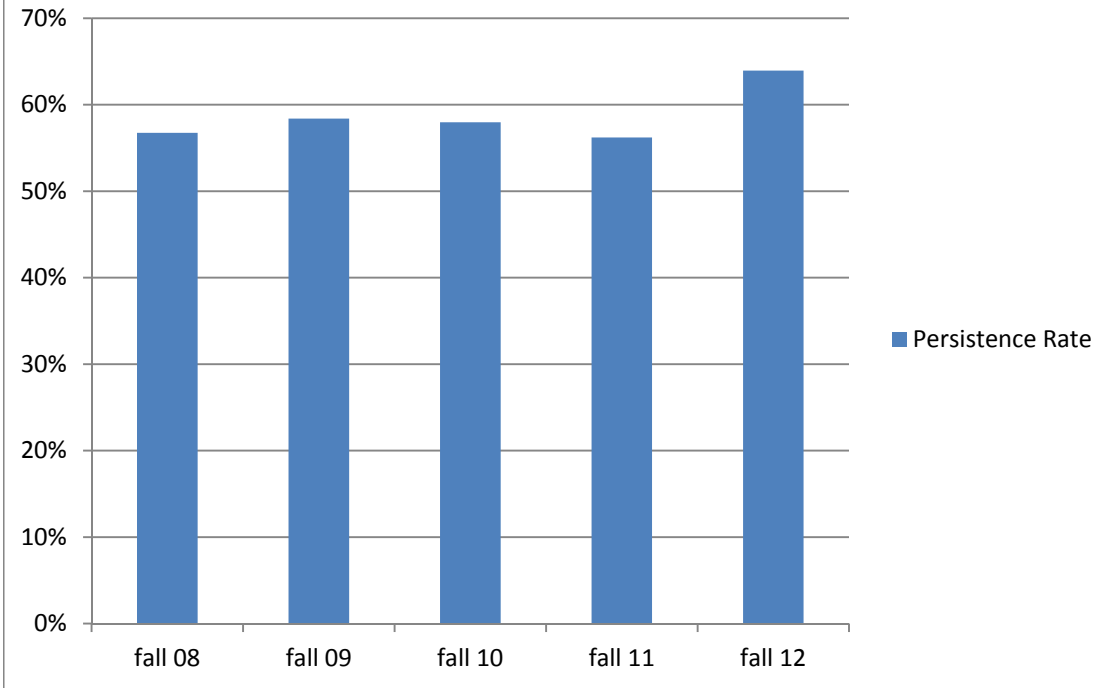
Fall to Spring Persistence of First-time Student Cohorts

College	Term	Cohort	Persistence	Persistence Rate
BERKELEY	fall 08	2203	1252	57%
BERKELEY	fall 09	2341	1409	60%
BERKELEY	fall 10	2076	1242	60%
BERKELEY	fall 11	1956	1234	63%
BERKELEY	fall 12	1754	1145	65%

Note: Persistence Rate is defined as the percentage of students enrolled in at least one class at the college at fall census of the cohort year who were then enrolled in at least one class on the following spring opening day in District.

Laney College

Fall to Spring Persistence of First-time Student Cohorts



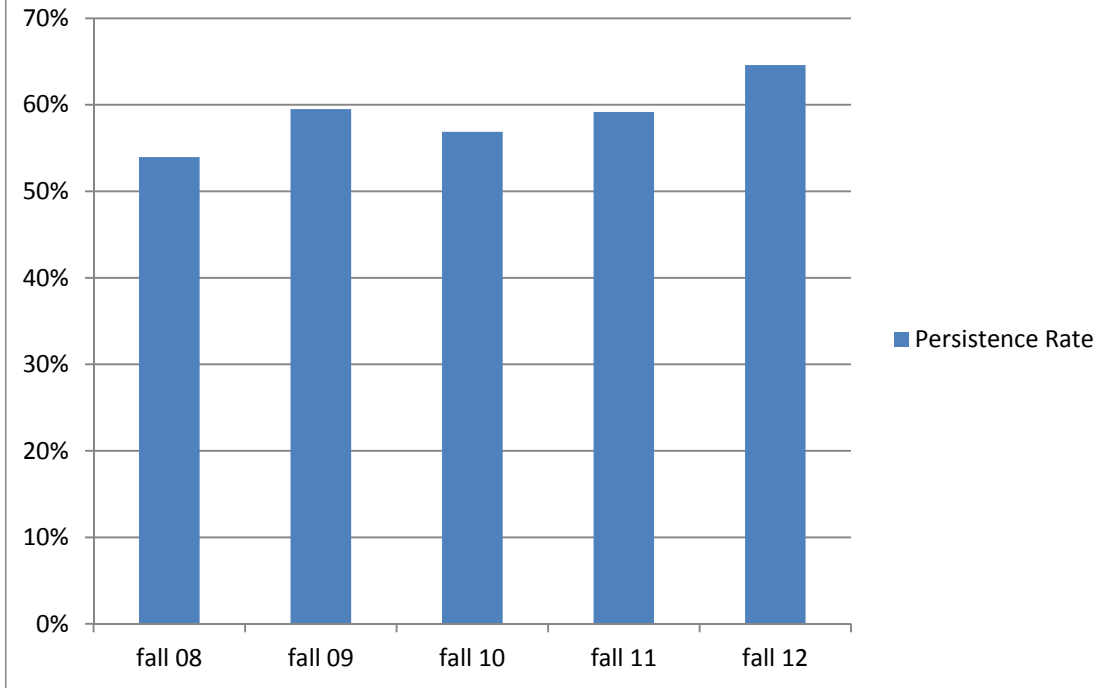
Fall to Spring Persistence of First-time Student Cohorts

College	Term	Cohort	Persistence	Persistence Rate
LANEY	fall 08	3389	1923	57%
LANEY	fall 09	3848	2247	58%
LANEY	fall 10	3243	1880	58%
LANEY	fall 11	2807	1578	56%
LANEY	fall 12	2785	1781	64%

Note: Persistence Rate is defined as the percentage of students enrolled in at least one class at the college at fall census of the cohort year who were then enrolled in at least one class on the following spring opening day in District.

Merritt College

Fall to Spring Persistence of First-time Student Cohorts



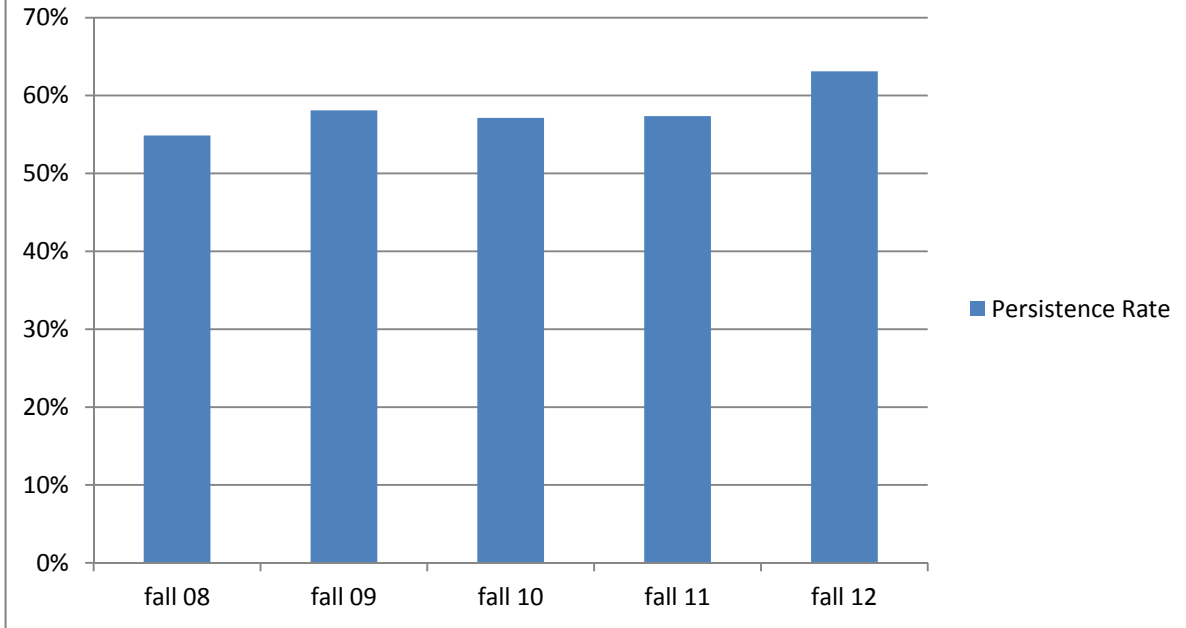
Fall to Spring Persistence of First-time Student Cohorts

College	Term	Cohort	Persistence	Persistence Rate
MERRITT	fall 08	1844	995	54%
MERRITT	fall 09	2079	1237	59%
MERRITT	fall 10	1823	1037	57%
MERRITT	fall 11	1342	794	59%
MERRITT	fall 12	1567	1012	65%

Note: Persistence Rate is defined as the percentage of students enrolled in at least one class at the college at fall census of the cohort year who were then enrolled in at least one class on the following spring opening day in District.

Peralta Community College District

Fall to Spring Persistence of First-time Student Cohorts



Fall to Spring Persistence of First-time Student Cohorts

College	Term	Cohort	Persistence	Persistence Rate
PCCD	fall 08	8024	4403	55%
PCCD	fall 09	8732	5073	58%
PCCD	fall 10	7333	4189	57%
PCCD	fall 11	6235	3576	57%
PCCD	fall 12	6129	3868	63%

Note: Persistence Rate is defined as the percentage of students enrolled in at least one class at the college at fall census of the cohort year who were then enrolled in at least one class on the following spring opening day in District.